



texcare

FRANCE

16 – 18.11.2025

Paris Expo
Porte de Versailles
Hall 2.1

EXHIBITOR TECHNICAL GUIDE

texcare-france.fr

Summary

INFORMATION & KEY DATES

3

ACCESS TO PORTE DE VERSAILLES

8

BOOTHS & SERVICES

12

ADDITIONAL DOCUMENTS

19

Messe Frankfurt France S.A.S.

4, rue de la Bourse
75002 Paris - France
Tel. +33 155 268 989

Texcare@France.MesseFrankfurt.com
www.texcare-france.fr

INFORMATION & KEY DATES



texcare
FRANCE

**Exhibitor technical
guide 2025**

from 16 to 18 November 2025
Porte de Versailles Hall 2.1

Your Texcare France contact details



SALES DEPARTMENT
Mrs Stéphanie Crouchet

stephanie.crouchet@france.messefrankfurt.com
+33 (0)7 88 48 75 67



MARKETING DEPARTMENT
Mr Julien Schmoll

julien.schmoll@france.messefrankfurt.com
+33 (0)6 74 03 97 44



TECHNICAL DEPARTMENT
Ms Romane Depont
technique@texcare-france.fr
+33 (0)7 88 99 25 37



VIPARIS

TEXCARE MANAGER FOR VIPARIS
Ms Eva HOARAU
Exhibitor Service
contact@e-viparisstore.com
+33 (0)1 40 68 16 16

Texcare France 2025 planning

In order to provide you with the best possible service, please adhere to the deadlines below for your orders, entries and document dispatches.

Important

You will receive your access to the exhibitor portal once your participation fee has been received.

■ 27th September

Deadline for sending the plan to the organiser for raw space

■ 27th October

Registration deadline for the exhibition catalogue (printed and digital)
Information can be edited directly in your «Exhibitor Area»

Validation of the signage name on the exhibitor portal

■ 31st October

Deadline for installation modification requests

Closure of orders on the exhibitor portal

■ 7th November

Deadline for ordering VIPARIS services before the **20% surcharge**

■ 14th November

Start of raw space assembly at 2pm

■ 15th November

Start of the booth package assembly at 8am

Safety inspection visit: a company representative must be present on site.
If you are unable to attend, please inform the organiser

■ 16th / 17th / 18th November

Opening of the show

■ 18th November

Dismantling of booth package until 10pm

■ 19th November

Dismantling of raw space until 10am

Show opening times

	Visiteurs	Exposants
Sunday 16th Nov. 2025	9am - 6pm	8am - 7pm
Monday 17th Nov. 2025	9am - 6pm	8am - 7pm
Tuesday 18th Nov. 2025	9am - 6pm	8am - midnight

OPENING HOURS OF THE ORGANIZER’S OFFICE

The organisers’ area will remain open:

- Friday 14th November: 2pm - 5pm
- From 15th to 18th November: 9am - 5pm

On-site presence of CAMERUS (furniture) and International Moduling (general installation):

- Saturday 15th November: 12pm - 7pm
- Sunday 16th November: 8am - 11am

Additional on-site orders (at a **30% surcharge**) and subject to stock availability will be possible during these periods.

Assembly and dismantling

STAND ASSEMBLY

- Access is via Gate D of the Paris Expo – Porte de Versailles Exhibition Center (see access on the following pages).
- All vehicles wishing to access the Exhibition Centre during the assembly, delivery and dismantling periods must be registered in advance on <https://logipass.viparis.com> (opening approximately 2 months before the show)
- Access to the exhibition hall requires the presentation of an 'assembly/disassembly' badge. Handling equipments have to be identified with the name of the user and the mobile phone number.
- No vehicles will be allowed inside pavilion 2.1.
- Parking lot for unloading goods is limited to 1 hour.
- Parking lot 6 is free of charge throughout the set-up and dismantling periods.

Raw space building:

- Friday 14th November from 2pm to 10pm
- Saturday 15th November from 8am to 10pm

Assembly of booth package:

- Saturday 15th November from 8am to 10pm

All requests for exemption must be sent to the organisers before 31st of October.

STAND DISMANTLING

- For booth package: Tuesday 18th November from 6pm to midnight.
- For raw space: until Wednesday 19th November 10am.
- The equipment may only be removed after the show has closed to visitors (6pm).
- Exhibitors must vacate their stands by the times and dates specified above. Otherwise, the remaining material will be removed by the organiser at the exhibitor's expense and risk.

STOCKAGE

Please note that you do not have a dedicated storage area at the show.
If you would like to build a storage area on your booth, please contact the organiser's Technical Department: technique@texcare-france.fr

Warning! The storage of flammable products is prohibited.

If you have packaging or equipment, you can order this service from CLAMAGERAN:
Lucien LAWSON - +33 (0)1 57 25 18 09 - l.lawson@clamageran.com

Delivery

DURING ASSEMBLY

Deliveries are allowed throughout the set-up period (at the times indicated above).
All vehicles must be registered beforehand on <https://logipass.viparis.com>.
It is strongly recommended for a stand manager to be present at the time of the delivery.
The organisers are not responsible for deliveries (see below).

DURING THE SHOW

Deliveries are only allowed between 7.30am and 9am.
All vehicles must be registered beforehand on <https://logipass.viparis.com>.

GOODS AND PARCELS

To ensure the safe delivery of your parcels and goods, we recommend that you accurately indicate the sender's name, the recipient's name and contact details on the exhibition.

SALON TEXCARE

Company name - Name of receiver - Booth no. _____
Phone number _____
Parc des Expositions - Porte de Versailles - Hall 2.1
75015 Paris

IMPORTANT

Please note that the organiser does not have any handling equipment (no pallet trucks or forklift trucks). Please inform your carrier, who will need to be equipped. You can also book this service with CLAMAGERAN.

The organiser is not responsible for receiving parcels and goods.
If the recipient is absent at the time of delivery, the organiser cannot be held responsible for any loss, theft or damage.

Vehicles parked inside the Exhibition Centre remain the sole responsibility of their owners. The organiser cannot be held responsible in the event of theft or damage.

ACCESS TO PORTE DE VERSAILLES

texcare
FRANCE

**Exhibitor technical
guide 2025**

from 16 to 18 November 2025
Porte de Versailles Hall 2.1

Transport facilities



KOMBO OFFERS

Book your train tickets (SNCF, OuiGo, Trenitalia...), bus (Flixbus, BlaBlaBus) and flights (easyJet, Air France, Ryanair...) at the best price on Kombo

10€ discount to come to the Show with the code :
(code valid from 1st of May 2025)

P-TEXCARE25

Terms and conditions: Valid for a first purchase and on journeys to or from Paris between 15/11/2025 and 19/11/2025.

kombo.co



AIR FRANCE / KLM OFFERS

Discounts on a very wide range of public fares on all Air France and KLM flights, up to -15% on our international lines, as well as preferential sales and after-sales conditions on lines in mainland France (including Corsica).

Valid for transport from 09/11/2025 to 25/11/2025

Event : Texcare France
ID Code : **GME50267AF**

Lieu de l'événement : PARIS

To book, click on the following link:

<http://globalmeetings.airfranceklm.com>

Access to the Exhibition Centre

PUBLIC TRANSPORT

Bus



80

Station Porte de Versailles
– Parc des Expositions



39

Station Desnouettes

Métro



8

Station Balard



12

Station Porte de Versailles

RER



C

Station Boulevard Victor

Tram



T2 T3a

Station Porte de Versailles
– Parc des Expositions

PEDESTRIAN ACCESS

Paris Expo Porte de Versailles :

1 Place de la Porte de Versailles 75015 Paris

[Emplacement sur Google Maps ici](#)

ACCESS TO CAR PARK 6 (HALL 2.1)

Place des Insurgés de Varsovie, 75015 Paris

[Other car parks in the area can be booked here](#)


YOUR ROUTE WITH GOOGLE MAPS (CAR PARK 6)

[Your itinerary here](#)

**VEHICLE ACCESS :
GATE D / PARKING 6**



texcare
FRANCE

 norte A,

B porte B
gate B

services sur le si
services

Altitude
2000 ft.

transports





M



BUS

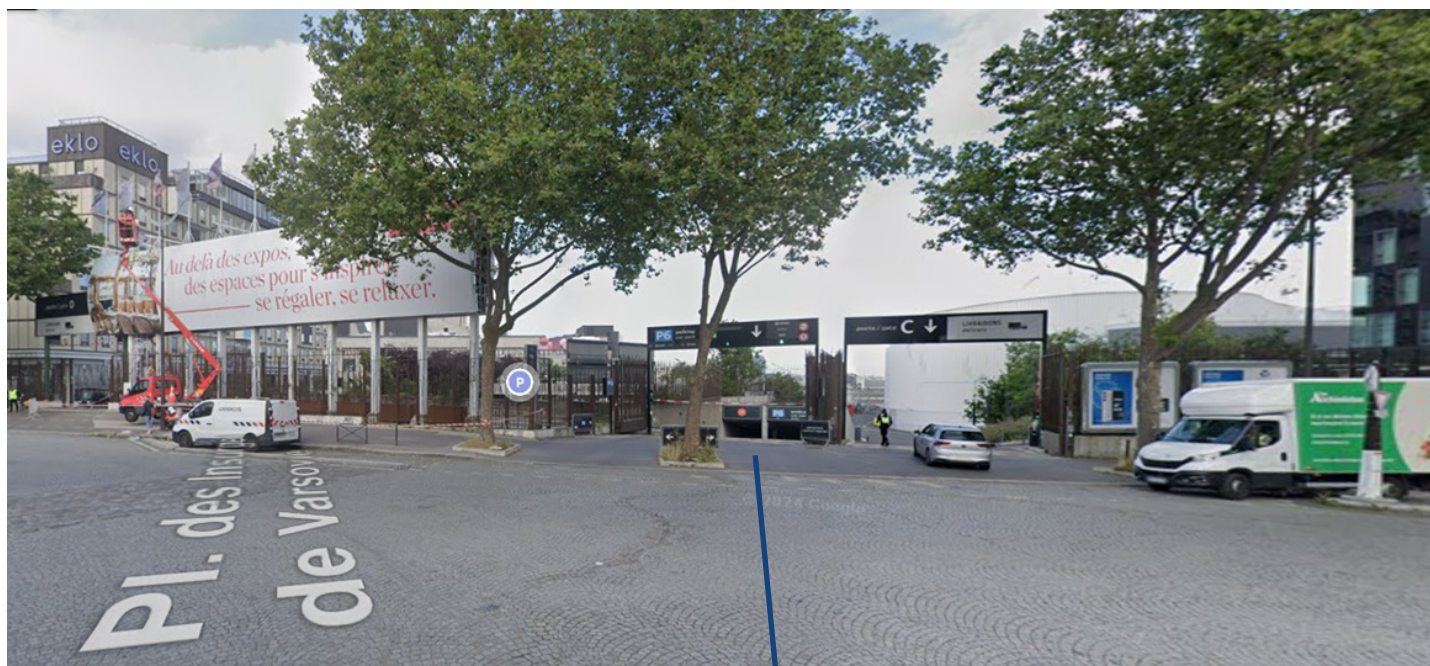
i hub des services

04/03/2016 11:00 AM

 café de l'innov

Parking 6 - Gate D

VIEW FROM PLACE DES INSURGÉS DE VARSOVIE 75015 - PARIS



Parking 6 Access

REMINDER : Any vehicle wishing to access the Exhibition Centre (Gate D) must first be registered on <https://logipass.viparis.com>.
Registration opens around 2 months before the show.

BOOTHS & SERVICES



texcare
FRANCE

**Exhibitor technical
guide 2025**

from 16 to 18 November 2025
Porte de Versailles Hall 2.1

Booth offers

« RAW SPACE » OFFER

This service includes:

- Bare floor area
- Listing in exhibitor catalogue (print and digital)
- Application fees and insurance

Raw space booths are marked out on the ground and supplied without any services other than those included above.

Site plan, top view and dimensioned perspective to be sent to the organiser for approval before 15 October 2025.

« JUNIOR » OFFER

This service includes:

- Information stand in a shared area
- 1 sign with exhibitor's names and booth no
- Entry in the exhibitor catalogue (print and digital)
- Application fees and insurance

Furniture:

- 1 counter
- 2 stools
- 1 waste bin
- 1 electrical socket

« BOOTH PACKAGE » OFFER

This service includes:

- Floor area with carpet
- Listing in exhibitor catalogue (print and digital)
- Application fees and insurance

Furniture:

- 1 table
- 3 chairs
- 1 wastebasket
- 1 electrical socket / triplet

Technical equipment:

- Partitions: white melamine modular panels and perimeter trim.
(H = 2400 mm; useful H = 2248 mm ;
W = 1000 mm; H = 940 mm; Th = 7 mm)
- Lighting: 1 directional LED spotlight per 3m² reserved
- Sign: double-sided with exhibitor's name (no logo) and stand number.
- Electricity: supply of an electrical box, of 3 kW (intermittent) per equipped stand.
- 300W of this box will be dedicated to powering the rail of 3 spotlights.

ATTENTION

The Junior and package booths signs are provided by the organizer.

The exhibitor has to noticed his wish **before 27th october**.

Failing that, the organizer will choose the inscription according to the invoicing information.

Booth options

OPTIONS BY THE ORGANISER

Available on the exhibitor online space:

- Augmentation de puissance
- Power increase
- Furniture
- Storage area
- Light vehicle parking

Available on quotation:

- Flooring
- Specific stand construction

OPTIONS BY VIPARIS SERVICES

Available on

<https://www.viparisstore.com>

- Electrical connection
- Water connection
- Compressed air connection
- Sling, halyard
- Multimedia services Internet/Wifi and telephony
- HGV and light vehicle parking

These services are provided by VIPARIS teams only.

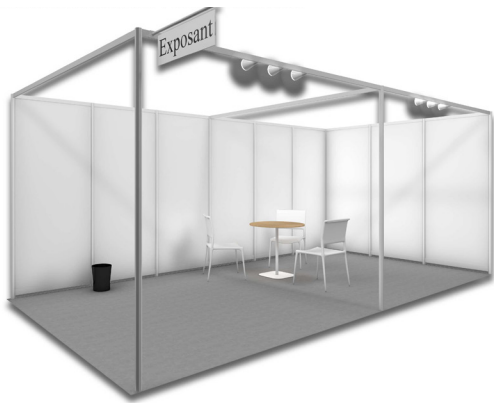
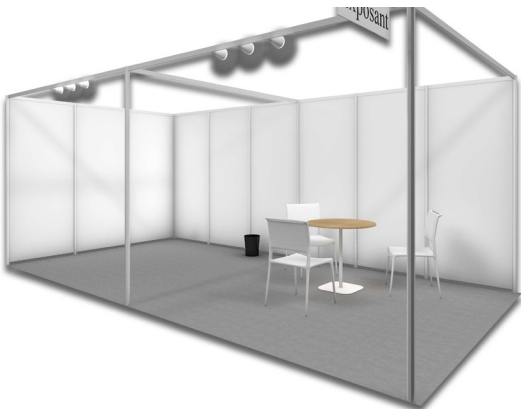
**Ordering deadline:
Before the 31st October 2025**

Some services will be available on site subject to availability and additional rates.

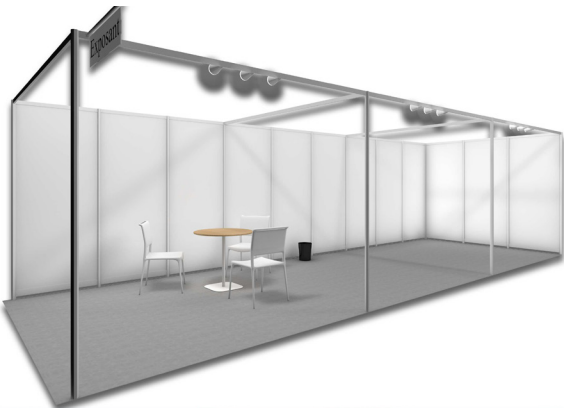
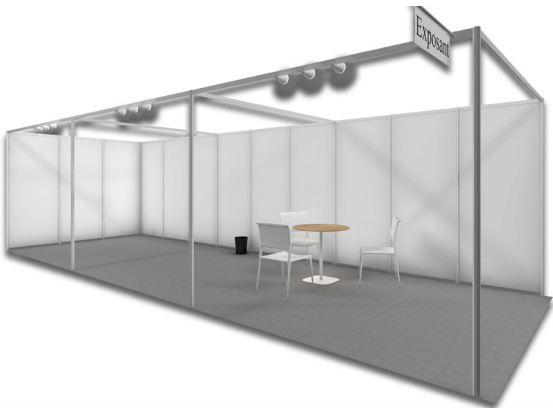
3D views of equipped booths



9sqm



18sqm



27sqm

Non-contractual images on 05/05/2025

Technical constraints

MAXIMUM HEIGHT AUTHORISED FOR BOOTH DECORATION: 4 M FROM THE GROUND

A setback of 0.50 m must be observed for structures between 2.50 and 4 m.

Multi-storey stands are not permitted.

It is expressly requested to avoid signage that could be disruptive to neighbouring stands (illuminated signs, strobes, etc.).

STAND PARTITIONS (EQUIPPED STANDS)

It is forbidden to screw, nail or pin on these partitions: provide hanging systems such as chains, hooks to be fixed to the top of the partition, or double-sided adhesive tape. Damaged partitions will be invoiced to the exhibitor.

Any decorative element must be removed by the exhibitor at the disassembly.

STAND POSTS

Stand posts have a maximum span of 4 metres.

A 6-metre façade will therefore have a post at each end, as well as an intermediate post.

TECHNICAL DUCTS

The technical ducts include all the fluid connections (electricity, water, air) and communication connections (telephone, fax, etc.). On request, the organiser can send you a plan showing the location of these ducts in the exhibition hall, particularly in the area where your stand is located. It is strictly forbidden to place steam pipes in these areas.

These traps are for the sole use of Viparis and its providers.

TECHNICAL FLOOR

You can order a technical floor from the Organiser's Technical Department. This floor, which is at least 5 cm high, is made up of 0.50 m² (1 m x 0.50 m) modules and has hatches through which electrical cables and wires can pass. You must enclose with your order a plan showing the location for the passage of your connections.

INSTALLATION OF LARGE EQUIPMENT ON STANDS

Exhibitors planning to display large machines (whether or not in operation) on their stand are advised to order a technical floor and possibly a weight distribution system.

Equipment requiring heavy handling must be installed on stands from Friday 14 November from 2pm for bare stands.

For equipped stands, in the event of heavy handling, please contact the Exhibitor Service Department for information and to obtain an exemption if necessary.

SOUND SYSTEM

It is advisable to avoid any sound system that might disturb neighbouring stands. Any sound installation on a stand must be submitted to the organiser for prior approval. If a sound installation has been accepted by the organiser, the exhibitor must, for safety reasons, ensure that it is connected to the hall's public address system.

SUSPENDED STRUCTURES

'In accordance with prefectural directives and the updated CCS VIPARIS validated on 5 October 2018: you are obliged to have your suspended structures inspected and certified by an approved 'Design/Construction' body in order to obtain and be able to present a report to the safety commission via the event's safety officer.

BARE STANDS PLANS

The construction plans of the bare stands «seen from above» and cutting plans, integrating the dimensions of the different elements, must be sent to the organizer before 15 October 2025.

Additional technical services

Depending on your booth type, some technical services can be ordered in addition.

Services delivered by VIPARIS

Orders on the Viparis Store platform:

<https://www.viparisstore.com>

Services delivered by the organizer

Order forms can be found in your Exhibitor space.

Important: for all orders, a plan must be sent to VIPARIS showing the position of the services on the stand (see attached model). In the absence of a plan, services will be supplied by default or cannot be installed (particularly for slings). Any displacement will be invoiced.

ELECTRICITY - VIPARIS STORE

- Equipped stands are supplied with an electrical box (see attached photos) delivering a default power of 3kW (intermittent) according to their needs. The connections are switched on the day before from 8am to 00am and during the show half an hour before opening (8am Sunday, Monday and Tuesday) and one hour after closing (7pm). Only one stand can be powered per connection.
- It is recommended to subscribe to a permanent box in order to avoid interruptions and machine resets during the show.
- If you order a cabinet (>20kW), it is important to note that they are supplied without plugs (see attached photos). You can therefore either bring your own distribution board or order one from the Viparis Store platform if you need one.
- For all cabinets, please provide protection (circuit breaker, etc.).

WATER - VIPARIS STORE

The water connection supplied by Viparis includes the supply, drainage and connection. A connection can supply only one stand. A connection may have a maximum of 2 connections. A technical woodfloor at the expense of the exhibitor is highly recommended.

COMPRESSED AIR - VIPARIS STORE

The single compressed air connection supplied by Viparis with a maximum pressure of 6.5 bars does not include the connection and can only supply one machine. Compressed air is supplied from 8am on the day before the exhibition opens until 7.30pm on 18 November.

FURNITURE Exhibitor space

Rented furnitures has been entrusted to CAMERUS. CAMERUS will have a permanence space during the assembly period at the Organizer's Office :

- **Saturday 15th November: 12pm - 7pm**

- **Sunday 16th November: 8am - 11am**

CAMERUS

Tel : +33 (0)1 57 14 25 25 – Email : exposant@camerus.com

ADDITIONAL FITTINGS Exhibitor space

The company in charge of the general installation of the show also offers you the construction of an office, additional lighting, carpeting, technical flooring... Permanence until Saturday, noon.

INTERNATIONAL MODULING

Tel : +33 (0)1 60 61 00 44 - Email : exposants@international-moduling.com

CLEANING Contact the service provider directly

The company responsible for cleaning the communal areas offers a range of cleaning services (cleaning the day before opening, daily cleaning, and so on.).

MILLENIUM

Tel : +33 (0)1 60 19 72 72 - Email : stand@millenium-sas.com

HANDLING / STORAGE Contact the service provider directly

CLAMAGERAN (PORTE DE VERSAILLES)

Contact : Lucien LAWSON

Tel : +33 (0)1 57 25 18 09 - Email : l.lawson@clamageran.com

CATERING SERVICE Contact the service provider directly

HORETO

Contact : Rayan RAQUIL

Tél : +33 (0)6 62 05 79 37 -

Email : rraquil@horeto.com

OR

POIRIER

Contact : Paul MONCEAUX

Tél : +33 (0)7 66 84 90 31 -

Email : pmonceaux@poirier-restauration.com

Menu Lunch

Menu Cocktail

**On request, we can put you in touch with our other service providers:
floral decorations, hosts, IT, audiovisual and security services...**

Download the Texcare France mobile app!

Get all the information you need: list of exhibitors, floor plan, programme of round tables, etc.


The new scanner function will also allow you to scan participants' badges to obtain their information (V-card) directly on your mobile.

ADDITIONAL DOCUMENTS

texcare
FRANCE

**Exhibitor technical
guide 2025**

from 16 to 18 November 2025
Porte de Versailles Hall 2.1



VIPARIS

MON STAND
MY STAND

Votre plan / Your blueprint

EXPOSANT / EXHIBITOR :

PAVILLON :

ALLÉE / AISLE :

N° DE STAND / STAND NUMBER :

INDIQUEZ SUR LE PLAN LES LETTRES D'ALLÉES ET LE NUMÉRO DE VOTRE STAND, AINSI QUE LES HAUTEURS D'ÉLINGUES ET POIDS SUSPENDUS.
SPECIFY ON THE BLUEPRINT THE LETTERS OF AISLES AND THE NUMBER OF YOUR STAND, AS WELL AS HEIGHT OF THE RIGGINGS AND THE TOTAL SUSPENDED WEIGHT.

N'OUBLIEZ PAS D'ORIENTER VOTRE STAND SUR LE PLAN (UNE ALLÉE ET UN STAND MITOYEN).
DO NOT FORGET TO POSITION YOUR STAND ON THE BLUEPRINT (AISLE AND ONE NEARBY STAND)

ÉLINGUES :

Poids par élingue (kg)
weight per sling

Hauteur brut depuis le sol (m)
height from ground floor

Coordonnées d'un contact en cas de question technique sur votre commande en montage.
Contact information in case of technical question regarding your order during set up.

Nom
Name

Mobile
Cellular

Utilisez 2 carreaux pour 1 m, votre plan sera au 1/100.
Use 2 squares for 1m. Your blueprint will be scaled to 1/100.

Votre stand est-il équipé d'un plancher ?
Is your stand equipped with a floorboard?

oui
yes

☐ non
no

Cotes exactes de votre stand :m xm
Exact measurements of your stand:

Exhibitor technical guide Texcare France 2025
from 16 to 18 November 2025 - Porte de Versailles Hall 2.1

texcare

FRANCE

21

Electrical box

KEOPS» TYPE ENCLOSURE (< OR =20KW)

A USER-FRIENDLY ELECTRICAL BOX



SMALL FOOTPRINT

The CUBE, new electrical box occupies a minimum of space on the stand floor. The rear shape of the shell has been designed to embed the sockets of the exhibitors in the global thickness of the electrical box.
Height 40 cm (15,75 in.); width 37.5 cm (14,76 in.); depth 30 cm (11,81 in.)

ENHANCED EXPERIENCE

An OLED screen displays useful information's on the first two lines:
The exhibitor's name and stand number - as well as the parameters of the registered supply order: power level and operating mode (intermittent or 24 / 24h).
The remaining part of the screen displays the operating status in five languages: French, English, Italian, Spanish, German.
- 2 red / green LED indicate the status of the service supply
- 1 LED notifies technical issues



MAIN FEATURES



IN/OUT POWER SUPPLY

The CUBE has a dual IN / OUT power outlet, set underneath the electrical box. It can thus be installed alone or in a serial set-up, with several boxes connected to each other.

The electrical box is equipped with new flat connectors developed by Marechal Electric in order to ensure efficient and safe power supply. The connectors are fully embedded in the volume of the shell and secured behind a hatch, locked by a special key, to be used only by authorized technicians.

EXHIBITOR SOCKET OUTLETS

Back side:

- Marechal Electric type IN / OUT power outlets
- 3 single-phase socket outlets 16A - 230V - 1P+N+E
- 1 three-phase 32A socket 32A - 230V/400V CEE type/P17 - 3P+N+E

Front side:

- 1 USB 2A - Type A socket, permanently powered, even if the other sockets don't deliver current.



CUBE
TECHNOLOGIES

KEOPS» TYPE ENCLOSURE (< OR =20KW)

THE CONNECTED ELECTRICAL BOX



PMT setting (Power – operating Mode – Time schedule)

Each electrical box is automatically set according to the exhibitor's order with three parameters:

- the maximum power to deliver (from 1 to 20kW),
- the operating mode (intermittent, 24 / 24h or continuous for the organizers)
- customizable schedules in intermittent mode (night cut-off).

The set parameters are displayed on the OLED screen.

REAL-TIME COMMUNICATION



ALARM NOTIFICATIONS

The technical and / or sales teams are notified remotely and in real time in case of the slightest technical problem with a CUBE electrical box or an inconsistency between the setting of the electrical box and the exhibitor's order.

MULTI-CHANNEL COMMUNICATION


The electrical box communicates via a secure WLAN WiFi 5 - 5Ghz link with the KEOPS MANAGER Web supervision software and via Bluetooth with the KEOPS MANAGER Mobile application.

INTERFACES

The NFC TAG is reserved for technical teams.

This TAG is used during the set-up phases and gives access to operating information at any time.

KEOPS» TYPE ENCLOSURE (> OR =20KW)



TECHNICAL DATA

Height 40 cm (15,75 in.); width 37.5 cm (14,76 in.); depth 30 cm (11,81 in.)
Footprint: 0.11m² [0,04 sq in.]
Weight: 10kg (22 lbs.)


Shell material: PE (Polyethylene) 100% recyclable
Shell color: RAL 9017 (signal black)
Maintenance: Clean with soapy water and a scraper sponge
Operating temperature: 0°C to 40°C (32°F – 104°F)

Outlet socket protections:

- Protection of the three-phase outlet socket and general cut-off:
32A differential circuit breaker, AC / 30mA type - C curve - 3 protected poles
- Single-phase outlet protection: 3 circuit breakers 16A - curve C

Conformities: CEE product

- Complies with European Low Voltage directives 2014/35 / EU
- Complies with the European MID directive - 2014/32 / EU
- Complies with the Electro-Magnetic Compatibility Directive EN61326-1
- Complies with standards: IEC61439-1, IEC 60950-1, IEC61010-1
- Complies with ERP (Etablissement Recevant du Public) type T french law



Electrical cabinet

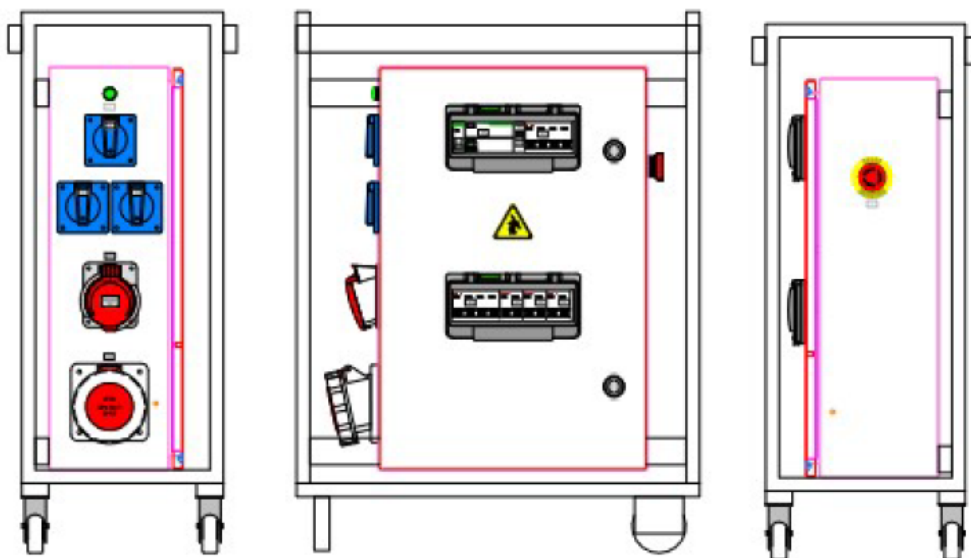


ARMOIRE 63A EVENTS

ARMOIRE 63A EVENTS

- Coffret métallique dim. 600x400x200mm – IP65 - IK10 + serrures papillon à clé
- Châssis métallique 900x600x300 + 2 roulettes diam.80mm, empilable 1 fois
- Protection caoutchouc au dos du châssis (haut et bas)
- 2 volets sur porte 10mod. IP65
- Alimentation sur jeu de barres 3P+N+T avec trou raccordement Ø11mm et terre à gauche (passage câble par joint brosse)
- 1 disjoncteur de tête 4P 63A 6kA courbe C + bobine à émission
- 1 bouton d'arrêt d'urgence type "coup de poing"
- 1 porte fusible 3P+N 63A (livré sans fusibles)
- 1 voyant de présence tension
- 1 relais différentiel réglable (0,03 à 30A et 0 à 4,5s) + 1 prise CEI 3P+N+T 63A - 400V - IP67 + système de débrochage en charge
- 1 disjoncteur différentiel 4P 32A 6kA courbe C 30mA type AC + 1 prise CEI 3P+N+T 32A - 400V - IP44
- 3 disjoncteurs différentiel 2P 16A 6kA courbe C 30mA type AC + 3 prises FR 16A 2P+T - 230V - IP54
- 1 barre de terre
- 1 barre de bridage des câbles

Production française, câblage selon la NF C15-100 et IEC 61439-4





ARMOIRE 400A EVENTS

Châssis inox hauteur 1476x1060x300mm + 4 roulettes de nivellement + 4 anneaux de levage + 2 fourreaux inox permettant le passage des transpalettes et chariots élévateurs.

Dimensionnement à température ambiante max. 35°C

Armoire métallique compartimentée dim. 1100x800x300mm - IP65 - IK10:

Compartiment haut

Dim 600x800x300mm avec bouton papillon sans serrure comprenant

- 1 étiquette logo client en façade (logo souhaité à fournir par vos soins)
- 1 plastron PVC rigide 5mm donnant accès au réarmement des disjoncteurs et à l'ICM du module "Cube"
- 1 emplacement sur le plastron pour intégration ICM module "Cube"
- 1 emplacement pour intégration AMO du module "Cube"
- 1 Interrupteur sectionneur 4P 400A NSX400NA motorisé, ouverture par impulsion, + bobine à émission
- 1 répartiteur 4P 400A
- 1 arrêt d'urgence type "coup de poing" + collerette métallique
- 1 voyant blanc "PRESENCE TENSION"
- 1 voyant vert "MARCHE"
- 1 bouton poussoir rouge "ARRET"
- 1 bouton poussoir vert "MARCHE"
- 2 disjoncteurs 4P 125A 10kA courbe C + 2 prises CEI 125A 3P+N+T IP67 + système de débrogage en charge (contacteurs 3P)
- 2 disjoncteurs 4P 63A 10kA courbe C + 2 prises CEI 63A 3P+N+T IP67 + système de débrogage en charge (contacteur 3P)
- 2 disjoncteurs 3P+N 32A 10kA courbe C + 2 prises CEI 32A 3P+N+T IP67
- 1 alimentation 24VDC pour ensemble communicant "Cube"
- 1 compteur d'énergie communicant Modbus RS485 + 3 tores de courant 400/5A
- 1 disjoncteur P/N 2A 6/10kA courbe C + contact SD/OF pour coupure générale



Compartiment bas

Dim 500x800x300mm avec serrures papillons à clé 5333 comprenant;

- 1 relais différentiel réglable de 30mA à 30 A en sensibilité et de 0 à 4,5s en temporisation fixé sur rail sur l'intérieur de la porte + tore de détection de défaut
- 1 contact de porte pour coupure IS général en cas d'ouverture de la porte sans désarmer la motorisation
- 1 jeu de barres cuivre avec raccordement en trou Ø12mm + barre liaison PEN surélevé dans la profondeur pour raccordement en tête bêche 2x 240mm² + double protection plexi (JDB/Fusibles) avec fixation sur la partie basse - Ouverture passe câble
- 1 porte fusibles 3P+N NH2 pour fusibles à couteau T2 et avec microcontact de percuteur
- 1 départ sur connecteurs Powerlock 3P+N+T + protection par plexi en interne
- 1 barre de terre

Production française, câblage selon la NF C15-100 et IEC 61439-4