

Section 251

Under Section 251 of the Apprenticeships, Skills, Children and Learning Act 2009, local authorities are required to submit statements on the planned and expected expenditure of local authority education and children's social care functions. Statements are submitted annually, and the latest statement published for 2012-13 covers the period 1st April 2012 – 31st March 2013.

The Department for Education publishes the budget statements, along with summary statistics and benchmarking tables, which enable comparisons to be made between local authorities. This document summarises some key observations from a review of the published Section 251 Budget data, focussing particularly on the area of 'Services for Young People'.¹

This is the only available published national dataset related specifically to planned expenditure on services for young people and can provide some interesting points for comparison and analysis. However caution must be exercised when drawing conclusions from the statistics, as there are known data quality issues with some areas. Local priorities and local formula will impact on the result and differences between year-on-year changes at local authority level could be a result of accounting changes.

Overall expenditure on Services for Young People

The following areas fall under expenditure for 'Services for Young People':

Fig. 1 Planned Expenditure (Gross, £'000)

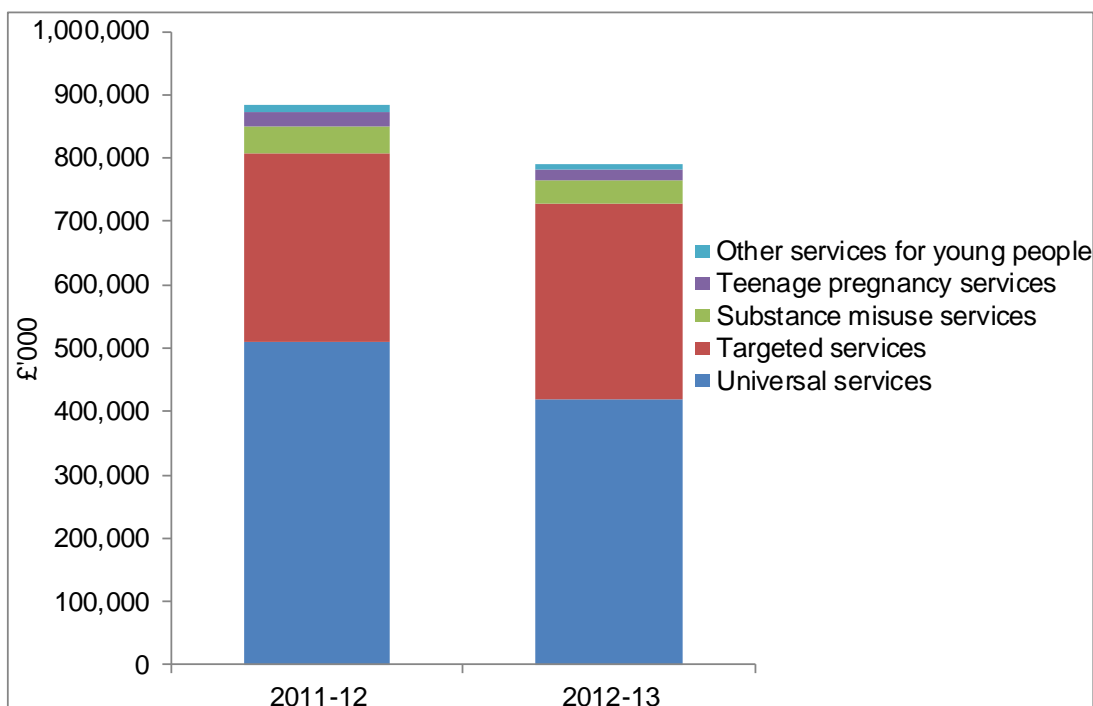
	2011-12	2012-13	% change
Universal services for young people (including youth work, positive activities and IAG)	508,653	419,002	-17.6%
Targeted services for young people (including youth work, positive activities and IAG)	298,646	308,288	3.2%
Substance misuse services (Drugs, Alcohol and Volatile substances)	44,109	36,793	-16.6%
Teenage pregnancy services	22,654	17,711	-21.8%
Other services for young people (includes discretionary awards and student support)	9,310	9,520	2.3%
Total Services for Young People	883,372	791,314	-10.4%

Planned expenditure (gross) on total Services for Young People is 10.4% lower in 2012/13 from 2011/12. Areas of budgeted expenditure that have seen the biggest decrease include teenage pregnancy services, universal services for young people and substance misuse services.

Planned expenditure on universal services in England fell by 17.6% between 2011/12 and 2012/13, with the majority of local authorities reporting a decrease in planned expenditure. In contrast to universal services expenditure, planned expenditure on targeted services increased between 2011-12 and 2012-13 by 3.2%.

¹ <http://www.education.gov.uk/childrenandyoungpeople/strategy/financeandfunding/section251>

Fig. 2 Planned Expenditure on Services for Young People



Local Authority Level Information

Benchmarking tables of planned expenditure are drawn from the published Section 251 budget statements for the 2012-13 financial year and are primarily aimed at schools forums and local authorities (LAs). The tables give detailed information on each LA’s planned expenditure on education in a form which enables comparison between LAs, showing planned expenditure per capita based on the total population aged between 0 to 17 (taken from Office for National Statistics population projections). The tables do not include Isles of Scilly and City of London due to their small size. Further details are available from the Department for Education [website](#).

Total Services for Young People

At local authority level, planned expenditure during 2012-13 on total services for young people ranges from £28 in Warrington to £238 in Tower Hamlets (gross, per capita). Comparing authority types, the biggest variations in per capita spending on services for young people can be seen in London boroughs and in unitary authorities. Counties generally have lower spend per capita than other authorities.

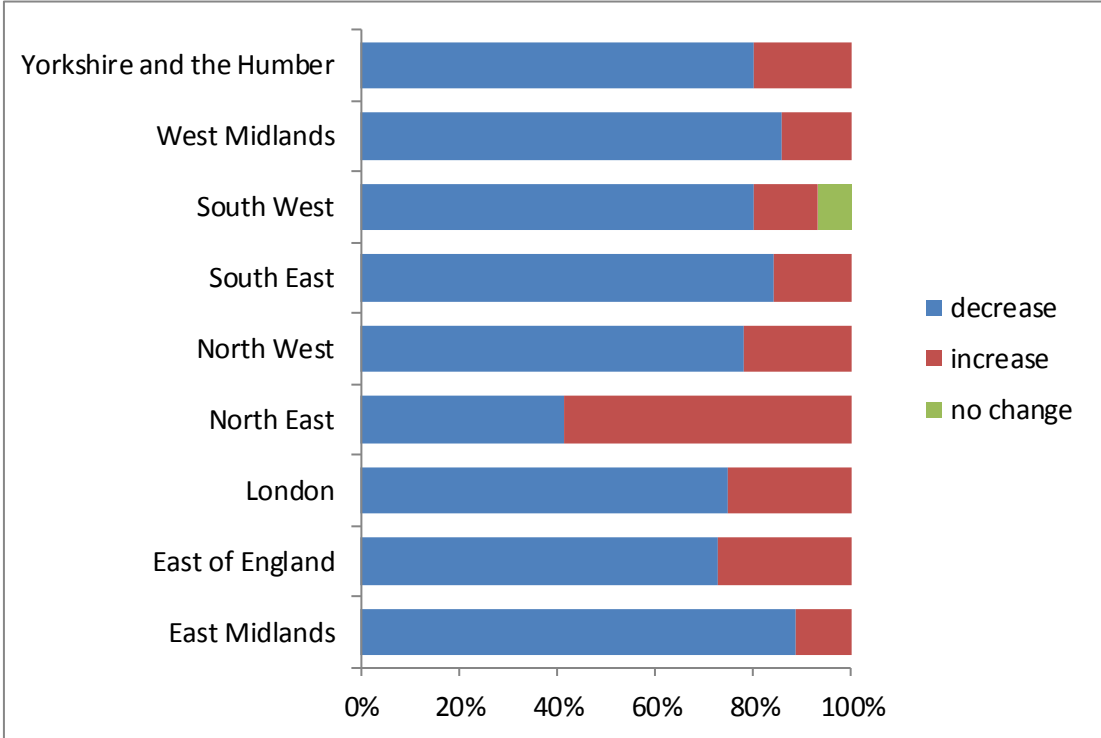
Fig. 3 Summary of per capita spend on Total Services for Young People 2012-13

	Median ²	Minimum	Maximum
Metropolitan	89	35 (Tameside)	130 (Wigan)
Unitary	75	28 (Warrington)	159 (Middlesbrough)
London Boroughs	70	30 (Bromley)	238 (Tower Hamlets)
Upper Tier	59	33 (Northamptonshire)	104 (Buckinghamshire)

² The median is less sensitive to extreme values than the mean, and is therefore often used for benchmarking.

Between 2011-12 and 2012-13, 115 of 150 local authorities (77%) reported a decrease in planned total expenditure (gross) on Services for Young People. It is interesting to note some regional variations in the number of local authorities reporting a planned decrease/increase in total expenditure on services for young people; in the North East for example, over half (7 out of 12) local authorities report a planned increase in expenditure.

Fig. 4 Proportion of local authorities reporting an increase/decrease in planned expenditure (per capita) on Services for Young People 2011-12 to 2012-13



Appendix A contains a table listing planned expenditure for each local authority during 2011-12 and 2012-13.

Universal and Targeted Services

Expenditure reported under universal/targeted service covers three main types of activity: youth work, positive activities for young people and information, advice and guidance services. It includes expenditure on the following:

- Employees
- Staff Training
- Premises-related expenditure
- Transport related expenditure
- Supplies and services
- Third-party payments
- Support services
- Costs at residential and non-residential youth centres.
- Costs at activity at outdoor and urban studies centres.
- Grant funding to the voluntary sector for youth work, positive activities and information, advice and guidance.

Universal and open access services are open to all young people, regardless of their circumstances or perception of vulnerability. Targeted services are those focussed on supporting early intervention for

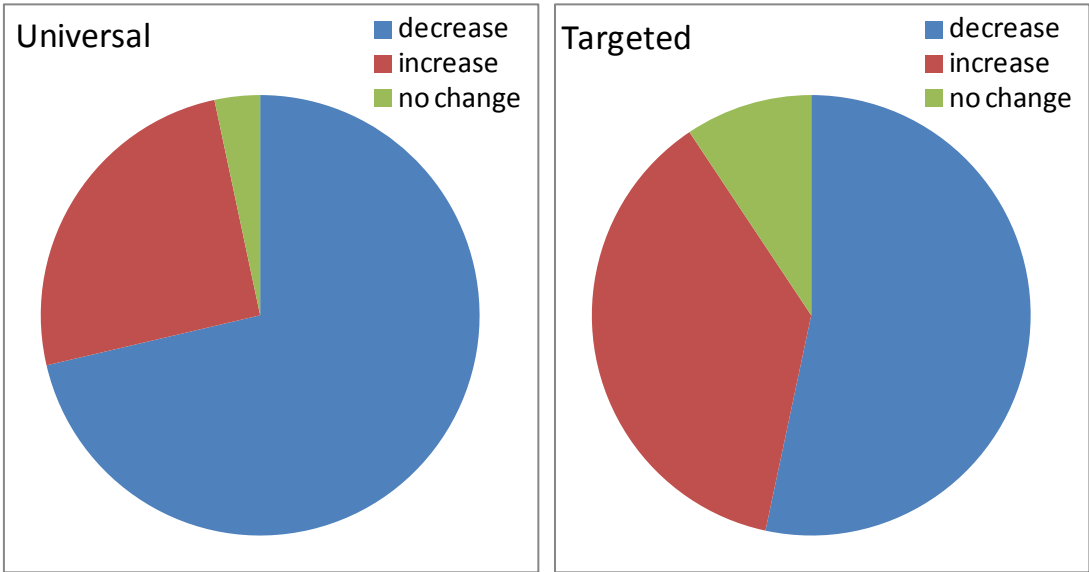
vulnerable young people including, but not limited to, those at risk of teenage pregnancy, substance misuse, youth crime and not being in education, employment or training. This should not include expenditure that is clearly attributed to a specific area of activity (such as the youth offending team or specific programmes for substance misuse or teenage pregnancy). However, targeted support arrangements that address multiple needs or risk factors and provide general support to young people should be included here.

Planned Gross expenditure per capita on universal services for young people in 2012-13 ranges from 0 (West Sussex, Leicestershire, Waltham Forest, Stockport, Southampton) to £150 (Islington). For targeted services, planned per capita spend ranges from 0 to £135 (Hammersmith and Fulham).

Local authorities in London and the North dominate the highest levels of planned expenditure on universal services per capita. County areas tend to have lower levels of spend on universal services. The picture for per capita spend on targeted services is more varied, with authorities distributed across the range of spend.

Although planned expenditure per capita is higher for universal services than for targeted services, universal services have seen a much greater decrease in planned expenditure between 2011-12 and 2012-13.

Fig. 5 Proportion of local authorities reporting a planned increase/decrease in expenditure on universal/targeted services between 2011-12 and 2012-13



Appendix B contains a table listing planned expenditure for each local authority under 'universal' and 'targeted' services during 2011-12 and 2012-13.

Appendix A: Planned Expenditure on Total Services for Young People³⁴

LEA code	LEA Name	Region	2011-12	2012-13	2011-12		2012-13	
			Gross (£)	Gross (£)	Gross (£) per capita	Rank	Gross (£) per capita	Rank
211	Tower Hamlets	London	10,532,639	13,006,577	208	2	238	1
206	Islington	London	5,625,988	6,723,692	168	5	188	2
204	Hackney	London	9,964,290	9,038,650	194	3	168	3
205	Hammersmith and Fulham	London	1,640,196	5,459,380	53	128	168	3
806	Middlesbrough	North East	4,820,580	5,010,214	154	7	159	5
202	Camden	London	9,242,120	6,343,117	227	1	157	6
359	Wigan	North West	6,236,617	8,613,210	95	50	130	7
212	Wandsworth	London	7,599,030	6,896,187	150	10	126	8
879	Plymouth	South West	5,883,090	6,307,105	116	25	126	8
812	North East Lincolnshire	Yorkshire & Humber	4,386,100	4,255,180	127	14	125	10
805	Hartlepool	North East	2,483,993	2,493,889	120	20	122	11
394	Sunderland	North East	5,954,874	6,689,102	107	35	121	12
391	Newcastle upon Tyne	North East	4,730,203	6,233,233	91	58	119	13
353	Oldham	North West	6,308,432	6,376,810	114	27	115	14
876	Halton	North West	4,422,754	3,111,900	161	6	113	15
393	South Tyneside	North East	4,621,136	3,365,175	154	7	113	15
892	Nottingham	East Midlands	7,258,232	6,419,144	128	13	112	17
344	Wirral	North West	7,773,100	7,502,800	117	23	112	17
350	Bolton	North West	7,489,700	7,096,177	120	20	111	19
373	Sheffield	Yorkshire & Humber	7,670,180	11,664,057	72	99	110	20
370	Barnsley	Yorkshire & Humber	6,605,295	5,279,024	136	11	109	21
807	Redcar and Cleveland	North East	3,225,878	2,890,050	113	28	104	22
908	Cornwall	South West	11,441,998	10,937,663	110	32	104	22
825	Buckinghamshire	South East	4,572,444	12,127,416	40	143	104	22
808	Stockton-on-Tees	North East	4,954,813	4,348,234	117	23	102	25
341	Liverpool	North West	10,583,634	8,645,481	126	17	101	26
208	Lambeth	London	6,348,865	5,618,998	118	22	101	26
384	Wakefield	Yorkshire & Humber	7,593,560	6,942,070	112	29	101	26
810	City of Kingston Upon Hull	Yorkshire & Humber	5,532,312	5,275,952	102	41	100	29
203	Greenwich	London	6,822,240	5,523,050	127	14	98	30
841	Darlington	North East	1,965,762	2,122,219	89	62	96	31
335	Walsall	West Midlands	6,827,567	5,849,582	112	29	95	32
871	Slough	South East	3,383,396	3,147,919	108	33	95	32
209	Lewisham	London	7,447,636	5,789,318	127	14	94	34
381	Calderdale	Yorkshire & Humber	5,556,593	4,318,530	122	19	94	34
336	Wolverhampton	West Midlands	6,527,090	4,952,700	124	18	93	36
342	St. Helens	North West	4,314,034	3,474,554	115	26	93	36
830	Derbyshire	East Midlands	14,126,101	14,291,874	91	58	92	38

³ The tables do not include Isles of Scilly and City of London due to their small size.

⁴ Per capita figures based on the total population aged 0 to 17 (taken from Office for National Statistics population projections).

334	Solihull	West Midlands	4,291,907	4,125,992	95	50	91	39
390	Gateshead	North East	3,497,245	3,479,371	92	56	91	39
210	Southwark	London	8,552,349	5,089,157	153	9	89	41
801	City of Bristol	South West	8,344,076	7,325,796	102	41	89	41
382	Kirklees	Yorkshire & Humber	9,380,376	8,466,131	99	45	89	41
372	Rotherham	Yorkshire & Humber	2,929,711	4,957,405	53	128	89	41
837	Bournemouth	South West	3,201,000	2,590,200	112	29	86	45
857	Rutland	East Midlands	803,600	758,900	91	58	86	45
311	Havering	London	4,373,038	4,314,890	86	67	83	47
314	Kingston upon Thames	London	2,636,558	2,931,018	77	85	82	48
893	Shropshire	West Midlands	4,152,350	4,873,688	70	101	82	48
383	Leeds	Yorkshire & Humber	16,267,660	12,491,560	106	36	81	50
856	Leicester	East Midlands	7,660,482	5,870,300	106	36	81	50
890	Blackpool	North West	1,993,664	2,380,452	68	107	81	50
929	Northumberland	North East	5,602,335	4,751,800	93	55	80	53
870	Reading	South East	2,754,281	2,469,984	91	58	80	53
815	North Yorkshire	Yorkshire & Humber	9,863,343	9,439,276	82	73	80	53
836	Poole	South West	2,130,538	2,301,693	76	88	80	53
358	Trafford	North West	4,644,040	3,911,337	96	49	79	57
308	Enfield	London	5,733,687	5,997,671	80	78	79	57
919	Hertfordshire	East of England	18,789,563	19,994,713	76	88	79	57
371	Doncaster	Yorkshire & Humber	6,585,850	4,934,170	105	38	78	60
816	York	Yorkshire & Humber	3,096,030	2,759,700	89	62	78	60
811	East Riding of Yorkshire	Yorkshire & Humber	5,475,770	5,060,590	84	70	78	60
894	Telford & Wrekin	West Midlands	2,882,827	2,954,495	77	85	78	60
392	North Tyneside	North East	3,035,080	3,101,459	76	88	78	60
355	Salford	North West	5,037,543	3,710,018	108	33	77	65
380	Bradford	Yorkshire & Humber	12,423,999	10,173,200	95	50	77	65
354	Rochdale	North West	4,297,783	3,827,862	88	64	77	65
921	Isle of Wight	South East	3,435,814	1,968,710	129	12	76	68
889	Blackburn with Darwen	North West	3,003,200	2,916,200	78	82	76	68
313	Hounslow	London	3,301,080	4,099,515	64	112	76	68
846	Brighton and Hove	South East	4,082,472	3,541,716	88	64	75	71
356	Stockport	North West	5,171,610	4,488,479	87	66	75	71
851	Portsmouth	South East	2,693,300	2,911,900	70	101	75	71
333	Sandwell	West Midlands	7,205,200	5,309,500	105	38	74	74
887	Medway	South East	4,408,055	4,350,725	76	88	74	74
936	Surrey	South East	15,311,824	18,520,007	63	115	74	74
316	Newham	London	6,558,360	5,021,215	100	43	71	77
332	Dudley	West Midlands	5,120,640	4,676,905	78	82	71	77
318	Richmond upon Thames	London	3,093,527	3,080,239	74	97	71	77
860	Staffordshire	West Midlands	12,383,905	11,918,538	74	97	71	77
835	Dorset	South West	7,633,300	5,538,951	97	48	70	81
909	Cumbria	North West	7,777,000	6,633,885	81	77	70	81
874	Peterborough	East of England	2,781,022	2,935,809	69	105	70	81
880	Torbay	South West	2,566,290	1,739,900	100	43	69	84

891	Nottinghamshire	East Midlands	15,721,828	10,915,684	99	45	69	84
306	Croydon	London	7,616,964	5,748,083	94	54	69	84
852	Southampton	South East	3,741,025	2,939,894	86	67	68	87
312	Hillingdon	London	5,078,010	4,333,800	84	70	68	87
803	South Gloucestershire	South West	4,171,000	3,788,000	75	95	67	89
352	Manchester	North West	4,618,110	6,714,200	47	138	67	89
331	Coventry	West Midlands	5,659,066	4,656,591	82	73	66	91
303	Bexley	London	4,065,000	3,482,000	78	82	65	92
315	Merton	London	3,064,949	2,900,302	72	99	65	92
343	Sefton	North West	5,302,800	3,380,341	98	47	63	94
937	Warwickshire	West Midlands	9,185,880	7,065,641	82	73	63	94
888	Lancashire	North West	19,504,030	15,410,917	80	78	63	94
826	Milton Keynes	South East	4,448,126	3,801,897	76	88	63	94
916	Gloucestershire	South West	9,166,388	7,807,197	76	88	63	94
884	Herefordshire	West Midlands	2,297,091	2,218,948	66	109	63	94
800	Bath & North East Somerset	South West	2,159,916	2,153,844	63	115	63	94
840	Durham	North East	5,500,630	6,175,647	54	125	61	101
925	Lincolnshire	East Midlands	11,931,437	8,540,823	85	69	60	102
886	Kent	South East	23,670,035	18,536,843	76	88	59	103
878	Devon	South West	10,021,370	8,361,438	69	105	58	104
821	Luton	East of England	3,367,538	2,942,456	68	107	58	104
310	Harrow	London	3,937,377	2,971,508	77	85	57	106
885	Worcestershire	West Midlands	9,076,864	6,355,295	79	80	56	107
317	Redbridge	London	857,306	3,917,225	13	150	56	107
813	North Lincolnshire	Yorkshire & Humber	1,708,457	1,896,686	49	135	55	109
867	Bracknell Forest	South East	2,195,434	1,456,640	83	72	54	110
865	Wiltshire	South West	6,112,847	5,499,937	61	117	54	110
307	Ealing	London	3,853,295	3,834,545	57	121	54	110
855	Leicestershire	East Midlands	7,925,337	7,024,489	60	119	53	113
304	Brent	London	5,801,081	3,112,970	103	40	51	114
873	Cambridgeshire	East of England	7,664,419	6,489,188	61	117	51	114
883	Thurrock	East of England	2,105,543	1,935,763	55	122	51	114
869	West Berkshire	South East	2,896,242	1,832,890	79	80	50	117
881	Essex	East of England	16,419,878	15,067,152	54	125	50	117
926	Norfolk	East of England	4,777,147	8,138,820	29	149	50	117
868	Windsor and Maidenhead	South East	1,831,660	1,678,920	55	122	49	120
882	Southend-on-Sea	East of England	2,461,680	1,702,666	70	101	48	121
931	Oxfordshire	South East	8,794,470	6,726,964	65	110	48	121
207	Kensington and Chelsea	London	5,225,070	1,427,120	171	4	47	123
831	Derby	East Midlands	3,754,487	2,557,520	70	101	47	123
351	Bury	North West	2,068,569	2,006,159	50	134	47	123
895	Cheshire East	North West	3,001,712	3,526,335	40	143	47	123
301	Barking and Dagenham	London	1,475,810	2,497,100	30	147	47	123
938	West Sussex	South East	8,811,512	7,678,344	54	125	46	128
302	Barnet	London	3,499,823	3,788,173	44	141	46	128
872	Wokingham	South East	1,952,450	1,676,390	53	128	45	130

933	Somerset	South West	6,959,665	4,811,966	64	112	44	131
213	Westminster	London	3,452,150	1,590,200	95	50	43	132
866	Swindon	South West	2,892,765	1,930,955	65	110	42	133
309	Haringey	London	2,515,689	2,159,400	51	131	42	133
319	Sutton	London	2,116,950	1,911,732	49	135	42	133
340	Knowsley	North West	2,532,194	1,379,366	75	95	41	136
802	North Somerset	South West	2,221,305	1,825,946	51	131	41	136
861	Stoke-on-Trent	West Midlands	2,534,390	2,133,570	48	137	40	138
850	Hampshire	South East	12,297,900	10,751,400	45	139	39	139
935	Suffolk	East of England	12,468,944	5,693,829	82	73	38	140
845	East Sussex	South East	6,579,034	3,924,528	64	112	38	140
330	Birmingham	West Midlands	13,097,206	9,951,941	51	131	38	140
357	Tameside	North West	4,350,600	1,691,093	92	56	35	143
822	Bedford Borough	East of England	2,081,468	1,272,045	59	120	35	143
928	Northamptonshire	East Midlands	6,884,136	5,240,202	44	141	33	145
896	Cheshire West and Chester	North West	3,029,769	2,143,047	45	139	32	146
320	Waltham Forest	London	2,996,039	1,817,400	55	122	31	147
823	Central Bedfordshire	East of England	2,075,808	1,760,055	36	145	31	147
305	Bromley	London	2,352,375	2,136,487	34	146	30	149
877	Warrington	North West	1,300,115	1,235,924	30	147	28	150

Appendix B: Planned Expenditure on Universal / Targeted Services for Young People⁵⁶

LEA code	LEA Name	Region	Universal services for young people (inc. youth work, positive activities and IAG)				Targeted services for young people (inc. youth work, positive activities and IAG)			
			2011-12		2012-13		2011-12		2012-13	
			(£) Per Capita	Rank	(£) Per Capita	Rank	(£) Per Capita	Rank	(£) Per Capita	Rank
205	Hammersmith & Fulham	London	47	78	29	99	0	139	135	1
359	Wigan	North West	79	21	25	112	9	109	99	2
806	Middlesbrough	North East	50	69	48	50	84	2	90	3
384	Wakefield	Yorkshire & Humber	51	64	12	134	55	17	84	4
830	Derbyshire	East Midlands	17	134	10	137	69	11	81	5
871	Slough	South East	16	135	11	136	83	3	79	6
841	Darlington	North East	28	117	21	117	61	15	75	7
815	North Yorkshire	Yorkshire & Humber	1	145	3	142	76	5	73	8
825	Buckinghamshire	South East	28	117	9	139	11	101	70	9
204	Hackney	London	114	6	92	8	73	7	68	10
394	Sunderland	North East	63	42	39	75	26	71	66	11
805	Hartlepool	North East	49	71	51	48	55	17	59	12
370	Barnsley	Yorkshire & Humber	73	29	40	70	51	22	58	13
203	Greenwich	London	34	108	28	102	78	4	58	13
852	Southampton	South East	0	147	0	146	76	5	58	13
908	Cornwall	South West	33	109	40	70	70	8	57	16
336	Wolverhampton	West Midlands	67	36	33	87	50	25	57	16
356	Stockport	North West	0	147	0	146	70	8	57	16
358	Trafford	North West	37	100	20	119	49	29	53	19
383	Leeds	Yorkshire & Humber	46	82	23	113	53	20	52	20
211	Tower Hamlets	London	142	1	156	2	63	13	51	21
855	Leicestershire	East Midlands	0	147	0	146	59	16	51	21
332	Dudley	West Midlands	21	130	17	126	52	21	48	23
335	Walsall	West Midlands	68	33	46	56	40	47	47	24
884	Herefordshire	West Midlands	60	53	13	133	0	139	47	24
334	Solihull	West Midlands	40	92	39	75	48	33	46	26
816	York	Yorkshire & Humber	36	103	29	99	49	29	46	26
881	Essex	East of England	2	143	2	144	51	22	46	26
879	Plymouth	South West	61	50	62	27	44	38	45	29
880	Torbay	South West	63	42	16	129	30	65	45	29
938	West Sussex	South East	2	143	0	146	50	25	45	29
350	Bolton	North West	95	14	60	31	17	85	44	32
208	Lambeth	London	78	23	45	58	32	60	44	32
873	Cambridgeshire	East of England	12	138	3	142	45	36	42	34
212	Wandsworth	London	1	145	82	11	43	41	41	35
811	East Riding of Yorkshire	Yorkshire & Humber	36	103	27	105	31	62	41	35
311	Havering	London	37	100	40	70	46	34	40	37
355	Salford	North West	32	112	37	82	66	12	40	37
391	Newcastle upon Tyne	North East	44	86	73	15	34	55	39	39
341	Liverpool	North West	64	40	48	50	45	36	39	39
936	Surrey	South East	19	133	27	105	40	47	39	39
315	Merton	London	25	124	19	123	39	49	39	39

⁵ The tables do not include Isles of Scilly and City of London due to their small size.

⁶ Per capita figures based on the total population aged 0 to 17 (taken from Office for National Statistics population projections).

807	Redcar and Cleveland	North East	50	69	52	46	49	29	38	43
931	Oxfordshire	South East	26	123	10	137	36	52	38	43
937	Warwickshire	West Midlands	38	98	20	119	39	49	37	45
919	Hertfordshire	East of England	28	117	38	80	43	41	36	46
890	Blackpool	North West	36	103	32	89	14	92	35	47
909	Cumbria	North West	51	64	34	86	28	68	35	47
342	St. Helens	North West	51	64	48	50	50	25	34	49
870	Reading	South East	33	109	32	89	49	29	34	49
868	Windsor & Maidenhead	South East	24	125	15	130	29	67	33	51
822	Bedford Borough	East of England	7	142	1	145	51	22	33	51
354	Rochdale	North West	49	71	45	58	38	51	32	53
887	Medway	South East	60	53	29	99	7	117	32	53
202	Camden	London	74	27	110	4	107	1	31	55
837	Bournemouth	South West	62	47	54	39	44	38	31	55
921	Isle of Wight	South East	103	12	40	70	15	89	31	55
373	Sheffield	Yorkshire & Humber	47	78	69	18	16	87	29	58
392	North Tyneside	North East	65	38	38	80	1	134	29	58
826	Milton Keynes	South East	38	98	31	93	33	56	29	58
916	Gloucestershire	South West	61	50	31	93	6	120	29	58
865	Wiltshire	South West	46	82	20	119	11	101	29	58
320	Waltham Forest	London	24	125	0	146	28	68	29	58
801	City of Bristol	South West	65	38	56	35	32	60	28	64
885	Worcestershire	West Midlands	37	100	27	105	36	52	28	64
850	Hampshire	South East	33	109	8	141	8	113	28	64
308	Enfield	London	45	84	44	61	27	70	27	67
313	Hounslow	London	55	60	44	61	3	130	27	67
831	Derby	East Midlands	27	121	19	123	41	46	27	67
209	Lewisham	London	106	10	55	36	8	113	26	70
310	Harrow	London	39	95	27	105	33	56	26	70
206	Islington	London	133	3	159	1	31	62	25	72
343	Sefton	North West	51	64	32	89	33	56	25	72
382	Kirklees	Yorkshire & Humber	45	84	61	28	50	25	24	74
860	Staffordshire	West Midlands	63	42	44	61	7	117	24	74
836	Poole	South West	60	53	48	50	13	95	23	76
303	Bexley	London	52	62	36	83	26	71	23	76
888	Lancashire	North West	64	40	36	83	11	101	23	76
319	Sutton	London	22	128	18	125	23	77	23	76
344	Wirral	North West	83	15	81	12	25	74	22	80
304	Brent	London	48	76	28	102	43	41	22	80
302	Barnet	London	27	121	21	117	12	98	22	80
802	North Somerset	South West	22	128	14	132	23	77	22	80
851	Portsmouth	South East	51	64	50	49	15	89	21	84
835	Dorset	South West	55	60	42	67	33	56	21	84
823	Central Bedfordshire	East of England	13	136	9	139	23	77	21	84
893	Shropshire	West Midlands	42	90	54	39	21	80	19	87
895	Cheshire East	North West	39	95	27	105	0	139	19	87
808	Stockton-on-Tees	North East	97	13	77	14	14	92	18	89
340	Knowsley	North West	11	139	22	116	63	13	18	89
305	Bromley	London	13	136	12	134	21	80	18	89
876	Halton	North West	80	18	87	10	70	8	17	92
390	Gateshead	North East	79	21	61	28	1	134	17	92
312	Hillingdon	London	71	31	45	58	10	106	17	92

372	Rotherham	Yorkshire & Humber	48	76	69	18	2	131	16	95
889	Blackburn with Darwen	North West	70	32	54	39	0	139	16	95
925	Lincolnshire	East Midlands	47	78	40	70	36	52	16	95
331	Coventry	West Midlands	49	71	32	89	16	87	15	98
866	Swindon	South West	11	139	23	113	46	34	15	98
210	Southwark	London	107	9	71	17	42	45	14	100
813	North Lincolnshire	Yorkshire & Humber	28	117	31	93	14	92	14	100
330	Birmingham	West Midlands	35	107	17	126	9	109	14	100
894	Telford & Wrekin	West Midlands	49	71	59	34	19	82	13	103
318	Richmond upon Thames	London	59	56	53	44	8	113	13	103
207	Kensington and Chelsea	London	134	2	15	130	15	89	13	103
856	Leicester	East Midlands	83	15	65	24	17	85	12	106
845	East Sussex	South East	44	86	17	126	11	101	11	107
306	Croydon	London	62	47	55	36	12	98	10	108
869	West Berkshire	South East	63	42	33	87	9	109	10	108
935	Suffolk	East of England	49	71	28	102	31	62	10	108
810	Kingston Upon Hull	Yorkshire & Humber	75	25	68	20	6	120	9	111
861	Stoke-on-Trent	West Midlands	0	147	23	113	44	38	9	111
896	Cheshire West & Chester	North West	31	114	20	119	12	98	9	111
380	Bradford	Yorkshire & Humber	72	30	67	21	18	84	8	114
891	Nottinghamshire	East Midlands	80	18	60	31	13	95	8	114
800	Bath & NE Somerset	South West	44	86	46	56	10	106	8	114
840	Durham	North East	32	112	44	61	13	95	8	114
933	Somerset	South West	47	78	27	105	10	106	8	114
846	Brighton and Hove	South East	40	92	60	31	43	41	7	119
874	Peterborough	East of England	62	47	61	28	5	126	7	119
803	South Gloucestershire	South West	57	58	54	39	7	117	7	119
307	Ealing	London	44	86	41	69	9	109	7	119
812	North East Lincolnshire	Yorkshire & Humber	117	5	109	6	0	139	6	123
857	Rutland	East Midlands	77	24	78	13	6	120	6	123
929	Northumberland	North East	80	18	65	24	5	126	6	123
371	Doncaster	Yorkshire & Humber	75	25	67	21	24	75	6	123
301	Barking and Dagenham	London	30	115	39	75	0	139	6	123
309	Haringey	London	21	130	30	97	26	71	6	123
317	Redbridge	London	9	141	48	50	1	134	5	129
867	Bracknell Forest	South East	74	27	44	61	6	120	5	129
926	Norfolk	East of England	23	127	43	66	6	120	4	131
213	Westminster	London	40	92	39	75	55	17	4	131
393	South Tyneside	North East	112	7	97	7	24	75	3	133
882	Southend-on-Sea	East of England	56	59	36	83	2	131	3	133
314	Kingston upon Thames	London	61	50	73	15	8	113	2	135
316	Newham	London	68	33	54	39	4	128	1	136
886	Kent	South East	68	33	52	46	1	134	1	136
357	Tameside	North West	83	15	31	93	4	128	1	136
928	Northamptonshire	East Midlands	39	95	30	97	1	134	1	136
877	Warrington	North West	29	116	27	105	0	139	1	136
353	Oldham	North West	110	8	111	3	0	139	0	141
892	Nottingham	East Midlands	106	10	110	4	2	131	0	141
381	Calderdale	Yorkshire & Humber	119	4	91	9	0	139	0	141
333	Sandwell	West Midlands	67	36	67	21	19	82	0	141
352	Manchester	North West	42	90	63	26	0	139	0	141
821	Luton	East of England	63	42	53	44	0	139	0	141

878	Devon	South West	58	57	55	36	6	120	0	141
883	Thurrock	East of England	52	62	47	55	0	139	0	141
351	Bury	North West	36	103	39	75	11	101	0	141
872	Wokingham	South East	20	132	42	67	30	65	0	141