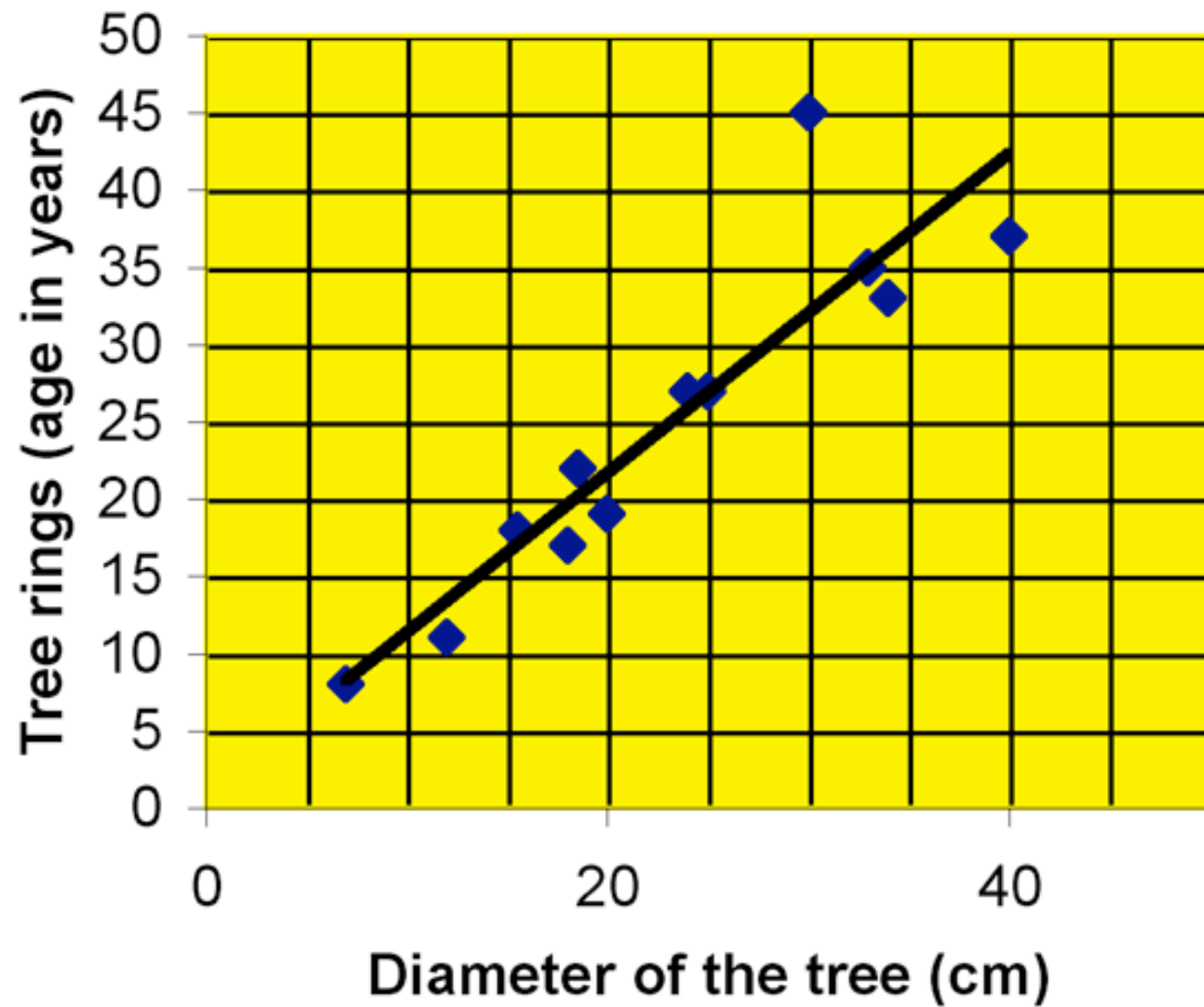


Diameter of tree (cm)	Number of tree rings
7	8
12	11
15.5	18
18	17
18.5	22
20	19
24	27
25	27
30	45
33	35
34	33
40	37

Tree ring graph



Teachers notes.

There are 12 photos “Images of tree rings” in “C1 Photos for a tree ring graph”. When they are used to compare the tree diameter (measure from tape in photograph) with the number of rings, the above results should be obtained. They can be used to draw a graph as shown above. All this can be done simply in Excel.

All trees were felled in autumn 2002 so can be back dated.

Alternatively there is a template for these records along with instructions on worksheet 1.

After drawing, discuss the pattern and any anomalies. Variation in annual growth is discussed in the websites listed in

<http://www-saps.plantsci.cam.ac.uk/treerings/weblinks.htm>

The pupils can also make a time line onto a large tree section.

This is explained to the pupils on worksheet 2. It is best to give them a large section so that they can trace the history back over many years. Photos J and L are ideal or slide 25 from the powerpoint. Slide 24 in the powerpoint shows how this can be done on a whiteboard as a class activity. You will need to give them some dates of years over the last 4 decades for them to include. Remember that all trees were felled in 2002 so the outermost date ring is that year.