



LEARNING FROM INCIDENTS ACTION ALERT

GRP-AC-201203

| All Shell Businesses

| May 2012

Retrieval of Corrosion Coupons from Pressurised Lines

Target audience for this alert

- Personnel responsible for and managing corrosion inspection work
- Maintenance and Inspection Managers
- Asset Managers

What happened

On May 3rd 2012, in a non-Shell operated joint venture, a team was removing a corrosion monitoring instrument (corrosion coupon) installed at the bottom of a gas pipeline ("6 o'clock" position). At the time of this operation the line was pressurised and operating at 74 bar.

The corrosion coupon retrieval operation was nearing completion when a sudden unbalanced release of pressure resulted in an uncontrolled outward movement of the outer barrel (piston) with the rotation handles attached. Person 3 was hit on the helmet/head by one of handles and fatally injured.

Why it happened

The investigation of this incident is not yet complete.

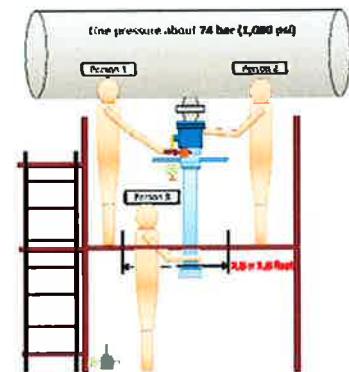
Lessons learned

Insight gained to date: It is understood that for bottom-of-line applications ("6 o'clock"), the assembly can be vulnerable to fouling due to corrosion product settling in low points/ the bottom-of-line and can drop down into the corrosion coupon balancing path. This can lead to pressure imbalance within the retrieval tool resulting in an uncontrolled outward movement of the outer barrel (piston) upon disengagement of the coupon threads.

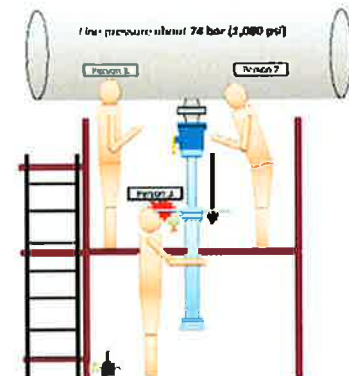
Actions

While the incident investigation is ongoing, it is recommended that the following action be considered as precautionary measures:

1. Stop all corrosion coupon retrieval operations on pressurised lines. When the investigation of this incident is complete, a subsequent LFI Alert (expected end May) will communicate the learnings and advise if this type of work can recommence.
2. Prior to the start of work Contract Holders, with the support of Shell maintenance and inspection personnel, are to assess whether contractors who perform corrosion coupon retrieval operations on pressurised lines have a Competence Assurance process for their personnel and assure they are competent. This type of work is a specialist operation normally contracted out to Original Equipment Manufacturer (OEM) approved contractors with certified personnel. (Refer Shell HSSE & SP Control Framework [Contractor HSSE Management Manual](#) (requirement 3.3)).



Picture 1: Situation before the incident



Picture 2: Situation after the incident (sudden unbalanced release of pressure resulting in an uncontrolled outward movement of the outer barrel (piston))

This document is made available for information only and on the condition that (i) it may not be relied upon by anyone, in the conduct of their own operations or otherwise; (ii) neither the Shell company issuing this document nor any other person or company concerned with furnishing information or data used herein (A) is liable for its accuracy or completeness, or for any recommendations or advice given in or any omission from this document, or for any consequences whatsoever resulting directly or indirectly from any use made of this document by any person, even if there was a failure to exercise reasonable care on the part of the Shell company or any other person or company as aforesaid; or (B) make any claim, representation or warranty, express or implied, that acting in accordance with this document will produce any particular results with regard to the subject matter contained herein, or satisfy the requirements of any applicable federal, state or local laws and regulations; and (iii) nothing in this document constitutes technical advice. If such advice is required it should be sought from a qualified professional adviser."

The companies in which Royal Dutch Shell plc directly and indirectly owns investments are separate entities. In this Learning From Incident Alert, the expression "Shell" is sometimes used for convenience where references are made to companies within the Shell group or to the group in general. Likewise, the words "we", "us" and "our" are also used to refer to Shell companies in general or those who work for them. These expressions are also used where no useful purpose is served by identifying specific companies