

Incident alert template

Incident date
February 2014

Summary
Barrow used to transport a spool tipped during manoeuvre.

Incident consequence
Personal injury

Cause of accident or incident
The potential for the instability in the trolley was not identified during the loading or manoeuvring of the trolley.

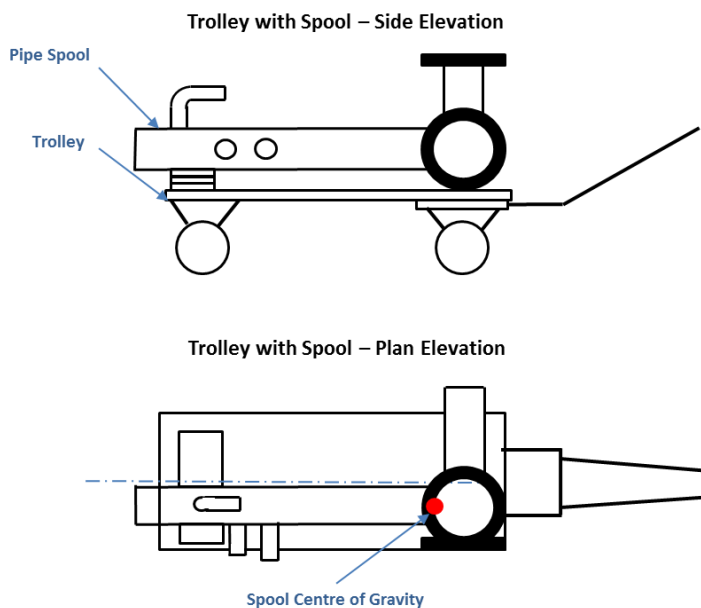
Location
Fixed installation

Activity
Construction

Description

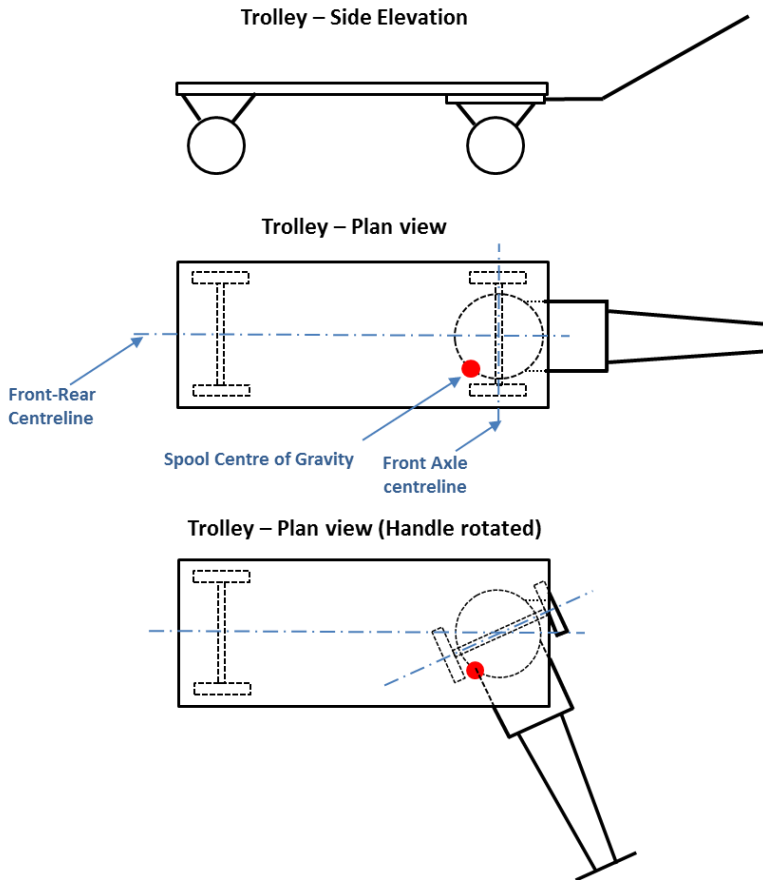
A spool was secured on a 4 wheel trolley with the Centre of Gravity of the spool located towards the front corner of the trolley (Figure 1). When the front wheels of the trolley were rotated to move the assembly, the combined trolley plus load became unstable due to the location of the centre of gravity relative to the wheel position resulting in the load overturning (Figure 2). Part of the spool struck the Injured Party as it tipped over.

Figure 1



Incident alert template

Figure 2



Specific equipment

1145kg spool and 3 ton articulated handled barrow.

Lessons learnt

- When undertaking manual handling activities, the combined risk of the load, the equipment and the transportation route need to be fully assessed.
- The design of barrows used should be reviewed and fully considered.

Contact Details

Anonymous