

# LESSONS LEARNED REPORT

## LINK ARM RETAINING PIN FELL 7 METRES TO RIG FLOOR



**TYPE OF INCIDENT:** NII  
**INCIDENT NO :** 470-08-12  
**COUNTRY:** UK  
**DATE OF INCIDENT:** 4<sup>TH</sup> MAY 2009

- USE NOV TO DETERMINE IF ALL ACTIONS FROM PREVIOUS SAFETY ALERTS PERTAINING TO PS2 500/500 HAVE BEEN COMMUNICATED AND CARRIED OUT.
- ORDER AND INSTALL NOV RECOMMENDED BEST PRACTICE RETAINING PINS AT EARLIEST OPPORTUNITY

### BRIEF ACCOUNT OF INCIDENT:

AT THE TIME THE DRILL CREW WERE USING THE YELLOW (PORT SIDE) TUGGER TO LIFT THE TEST NUBBIN ONTO THE RISER AFTER RUNNING 2 JOINTS AS PER PROGRAM. THE VICTORIA ARM WAS BEING USED TO POSITION THE NUBBIN OVER THE RISER SO TO MINIMISE PERSONNEL ON THE RIG FLOOR. AS THEY LIFTED THE NUBBIN TO THE DECK THE TUGGER OPERATOR DECLARED HE FELT A JOLT AND HEARD THE PIN FALL TO THE FLOOR - HE THEN LOWERED THE NUBBIN TO THE DECK. THE LINK ARM RETAINING PIN AND 2 LYNCH PINS (AS SHOWN) WERE FOUND ON THE RIG FLOOR.

### MESSAGES:



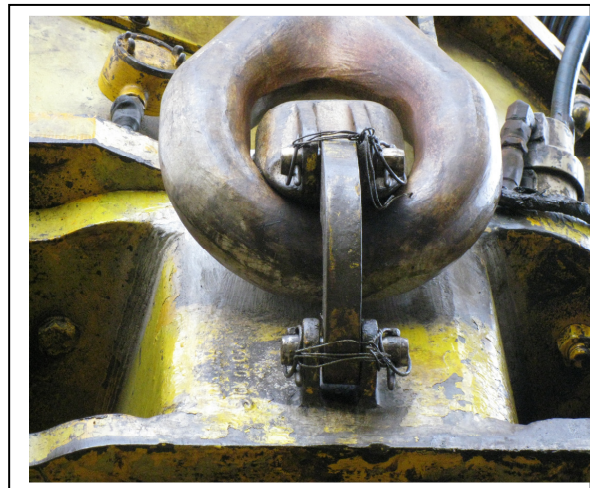
*Retaining pin c/w 2 x lynch pins*

### WHAT WENT WELL?

NO ONE GOT HURT. NO DAMAGE TO EQUIPMENT. RIG FLOOR WAS CLEAR OF PERSONNEL. JOB STOPPED TO ENABLE THOROUGH INVESTIGATION. THE DECISION TO WIRELOCK ALL 8 LYNCH PINS WAS TAKEN EARLY ON AND IMMEDIATELY PUT INTO PLACE.

### WHAT WENT WRONG?

LACK OF AWARENESS WAS SHOWN TOWARDS POSSIBLE SNAGGING POINTS. PREVIOUS ALERT RELATING TO THE DISCONTINUED USE OF COTTER PINS AS SECONDARY SECURING PINS FROM NOV HAD NOT BEEN COMMUNICATED TO THE RIG.



*Lynch pin with wirelock*

### LESSONS LEARNED:

- REVISIT TRA AND STOP TO HIGHLIGHT THE HAZARDS FROM WORKING TUGGER LINES CLOSE TO THE POWER SWIVEL (TOP DRIVE).
- IMPROVE ALERT NOTIFICATIONS FROM NOV BETWEEN THE RIG AND THE OFFICE.