



Safety Alert

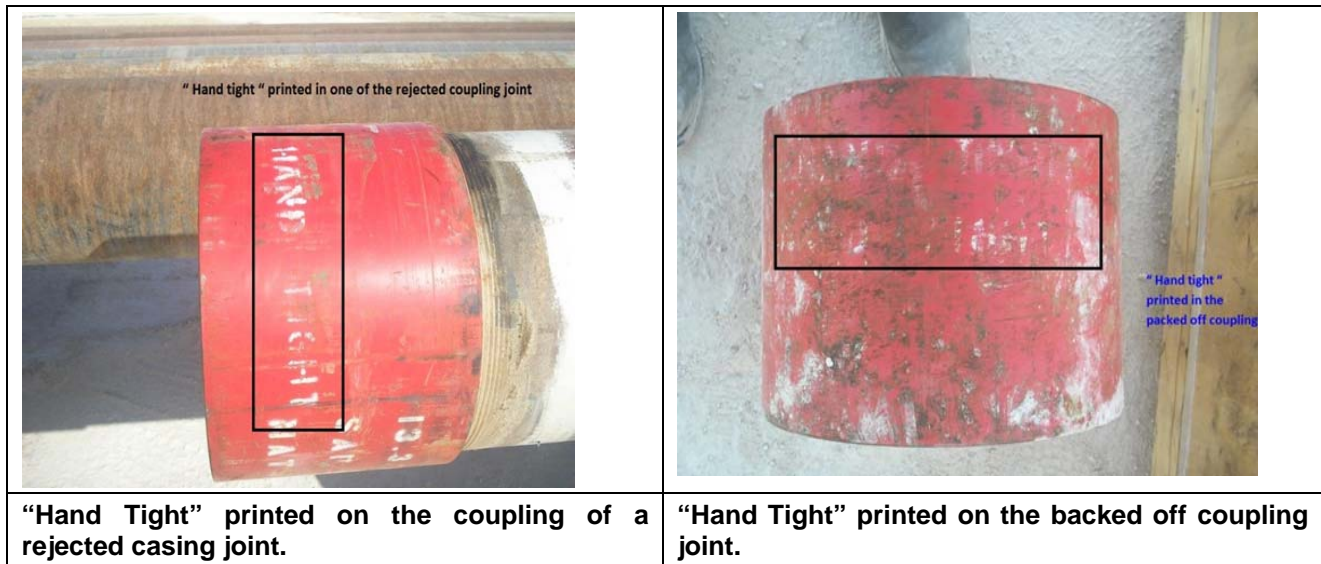
From the International Association of Drilling Contractors

ALERT 11 – 28

DROPPED OBJECT – CASING JOINT FALLS FROM ELEVATORS

WHAT HAPPENED:

While picking up 13^{3/8} casing through the V-door using single door elevator with crane hooked at one end (Pin end), at approximately 20 feet (6 meters) above the rotary table, the casing coupling disconnected from the joint allowing the casing joint to slide down the V-door to the catwalk where it subsequently fell onto the ground. At approximately the same time the disconnected coupling dropped out the elevator to the rig floor. Luckily no injuries occurred.



WHAT CAUSED IT:

- Coupling was not tightened correctly.
- Coupling was stenciled “Loose coupling / Hand tight” was hard to read.
- None of the rig personnel noticed the stenciling on the loose collar.

CORRECTIVE ACTIONS: To address this incident, this company did the following:

- Instructed all supply personnel to immediately check for loose couplings on all casings available at sites.
 - If loose couplers are found, segregate the joints and report to your supervisor.
- Instructed rig personnel to ensure that all couplings on casings are checked prior to picking up to run into the well.

The Corrective Actions stated in this alert are one company’s attempts to address the incident, and do not necessarily reflect the position of IADC or the IADC HSE Committee.

This material is presented for information purposes only. Managers & Supervisors should evaluate this information to determine if it can be applied to their own situations and practices

Copyright © 2005 International Association of Drilling Contractors All rights reserved.

Issued November 2011