

There are many more trees around our fantastic estate, if you have time have a stroll and discover the amazing flora & fauna on view. Do you have a favourite tree, leaf, bark, bug, bird or building? Draw it here...

Name _____ Age Name _____



If you are ok with us using your drawing for our Facebook page send it to Doneraile Estate, donerailecourt@opw.ie or via post to Doneraile Court, Doneraile, Co. Cork, P51 XR66 or drop it into us.

TREE TRAIL AT DONERAILE COURT




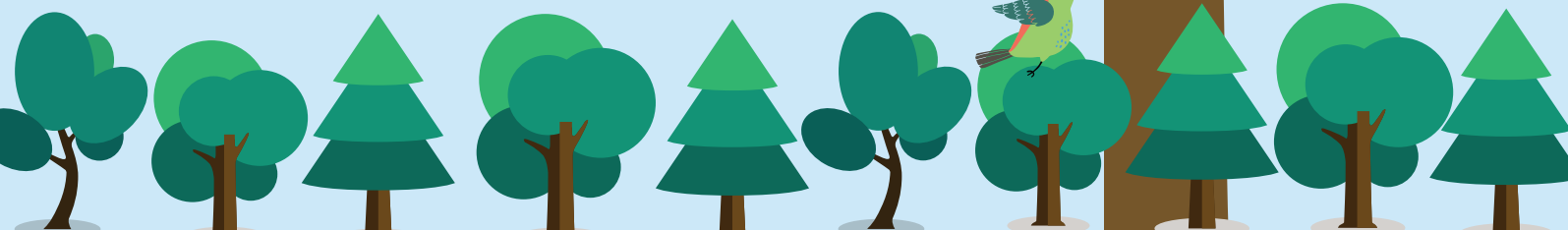
HISTORY of TREES IN DONERAILE

The work of planting most of the trees here took place in the 18th century. Single specimen trees such as Lime, Cedar of Lebanon, Spanish Chestnut Beech are planted in view of Doneraile Court. The 1728 estate map shows The Beech Avenue, Upper Orchard, Oak Grove, Lower Orchard and Fir Grove. In the 19th century the Lime Walk leading down to the fishponds was enclosed to make an aviary. Within this bird sanctuary were demoiselle, crane and Rheas. Today this area is home to Sika deer. A plan is in place to further enhance the pleasure ground and court garden - a work in progress.



START
TRAIL

- 
- 1 Find 10 trees in the pleasure grounds or in the park
 - 2 Make a drawing of your favourite leaf or tree
 - 3 Have you visited any other places with trees like a forest park, arboretum or even looked at the hedgerows?
 - 4 Can you spot some of the birds, rabbits, squirrels, bugs and bumble bees around the trees?
 - 5 If you can't find a tree draw a tree you like or a bug, bird, animal, building, flower, stone, fence, person, teddy, duck, swan, doll, car, train, tractor, tram, bus or whatever takes your fancy.




OPW Oifig na nOibreacha Poiblí
Office of Public Works



1 **COPPER BEECH TREE**
Fagus sylvatica purpurea

Clue: the big red tree

- Copper Beeches and Beeches have a live span of almost 400 years
- Their height can be from 50 to 170 feet
- New leaves of the copper and beech trees have a very light hairs growing on them
- Beeches are monoecious, that means both male and female flowers on the same plant.



2 **YEW TREE**
Taxus baccata

Clue: in the pleasure grounds in groups of 5


- Evergreen meaning always green even in winter
- Fruits eaten by birds such as blackbirds, mistletoe thrush song thrush
- Needles are eaten by caterpillars of the satin beauty moth
- Yew trees were planted on the graves of plague victims to protect and purify the dead.



3 **SYCAMORE TREE**
Acer pseudoplatanus

Clue: think of maple syrup or the Canadian flag
Sycamore

- Sycamore trees are also monoecious.
- One sycamore tree produces up to 10 000 seeds per season.
- These seeds are known as Helicopters.
- Wood of the sycamore is used to make kitchenware, furniture and musical instruments.



4 **CHUSAN PALM**
Trachycarpus fortunei

Clue: two trees that look like a windmill


- This palm tree likes the sun and well drained soil but doesn't like windy sites
- The palm trees can grow 15 cm per year
- The Chusan palm came all the way from China by a Scottish plant hunter Robert Fortune
- The fibre from the trunk can be used to make rope sacks.



10 **BEECH TREE**
Fagus sylvatica

Clue: on the avenue, lots of them


- Beech trees lose their leaves in autumn meaning they are deciduous
- Beech avenue in Doneraile Estate is over 200 years old
- The single Beech tree on the Cork gate avenue was planted circa 1820
- The fruit of a Beech is called a beechnut and fall from the tree in autumn, tasting very bitter.




5 **BAMBOO**

Clue: find the palm trees and look around below them

- What kind of bear like bamboo?
- Did you know Bamboo is the fastest growing plant on earth, now you do!
- Bamboo can grow 10 ft tall in 3 weeks!
- Alexander Graham Bell used a Bamboo needle in his first phonograph
- 2 2 Billion people are employed in various Bamboo industries.



9 **LARCH TREE**
Larix decidua

Clue: the furthest away tree in the 20th C.


- Cones from the Larch are the fruit and an important food source for squirrels and birds.
- The timber of the Larch is used to make coffins, telephone poles and boats.
- The Larch tree can live to around 250 years of age.
- Larch is monoecious, meaning it produces individual male and female flowers on the same tree.



8 **APPLE TREES**
Malus sylvestris

Clue: find the small box hedging and the gardeners cottages


- One of a few host trees for mistletoe
- In Ireland a yellow dye was extracted from the bark to colour wool
- Crann fia úll meaning Noble of the Wood
- Flowers in June and fruits in Autumn.



7 **CHERRY TREE**
Prunus cerasus

Clue: in the parterre, next to the fig

- The Cherry trees likes very well drained soil, if not their roots will rot!
- If you plant a cherry tree, beware that birds love cherries too and will probably eat them before you!
- If you do pick a cherry, pick the stem too as the cherry will keep longer and fresher
- Really sour cherries are in a cherry pie.



6 **HOLLY TREE**
Ilex aquifolium

Clue: look to the left before entering the court garden

- Druids regarded the holly as a symbol of fertility and eternal life
- Great source of food for animals during the winter months
- Used to decorate homes at Christmas time
- If a holly bush has berries its female
- Holly bushes were allowed to grow up through hedges to prevent the movement of witches, who apparently love to run along hedge tops.

