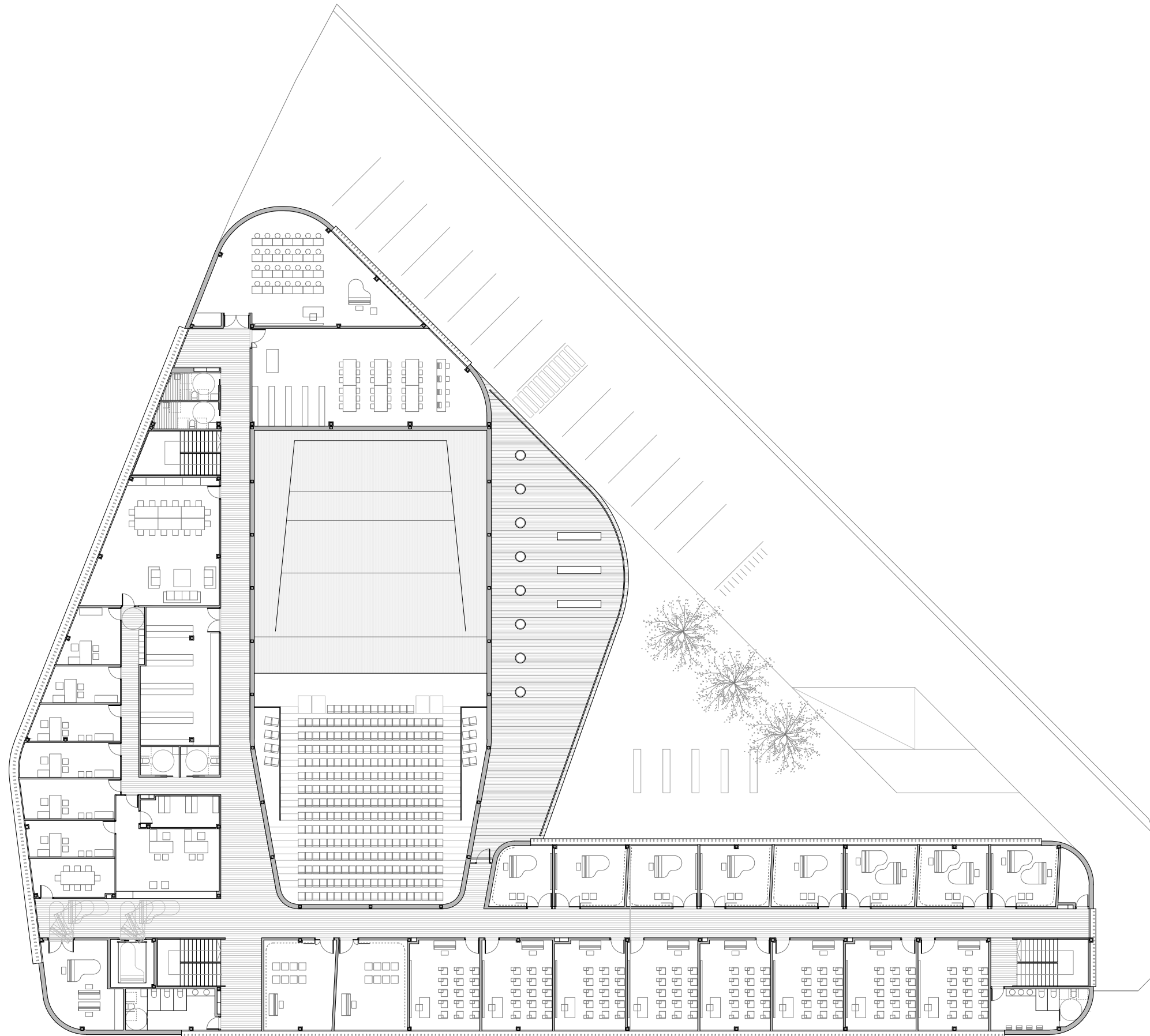
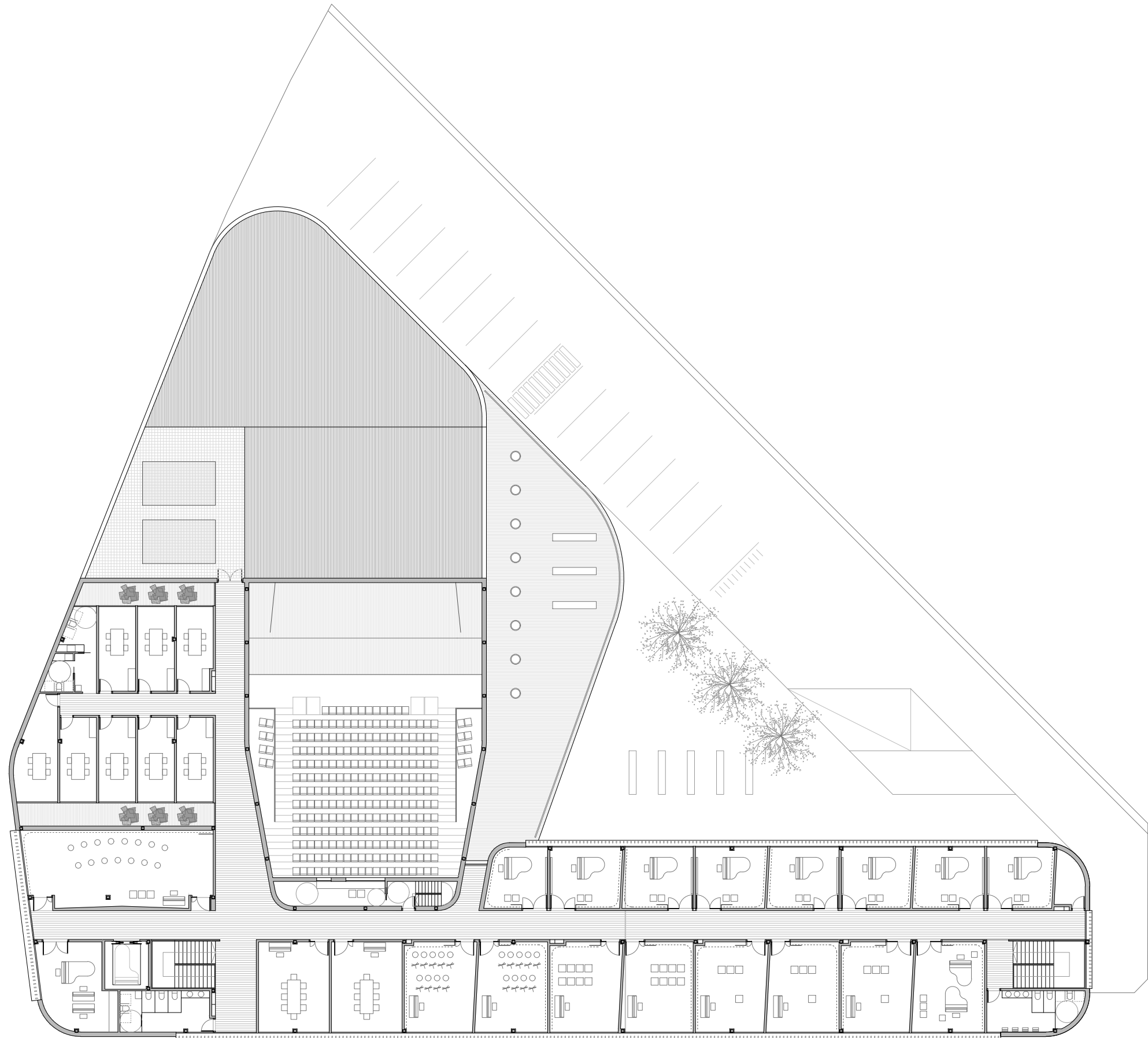


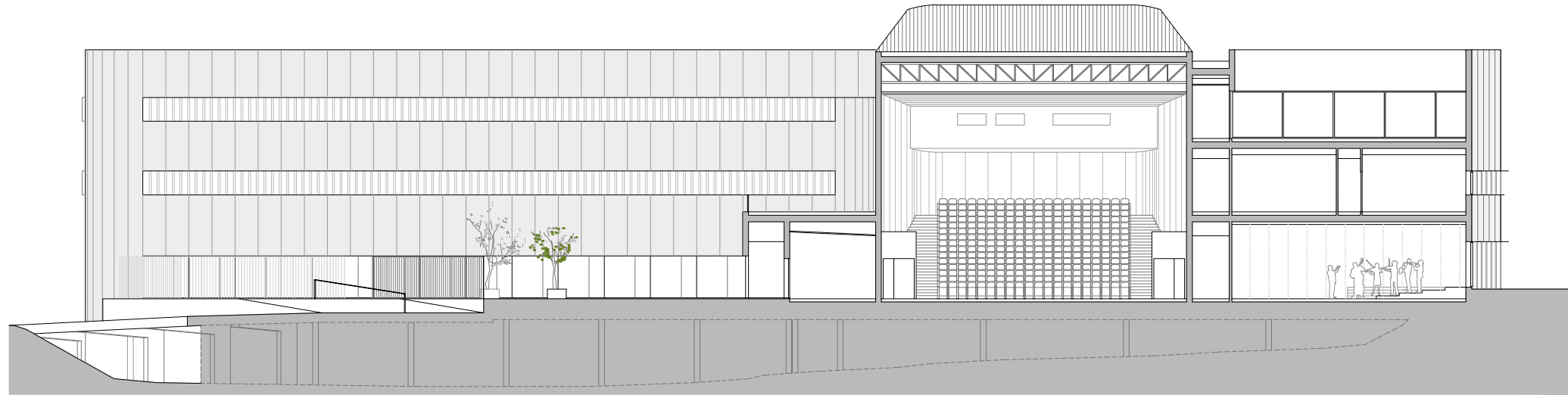
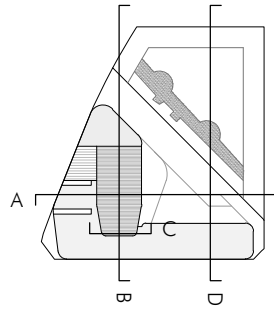
PLANTA BAJA  
E 1:300



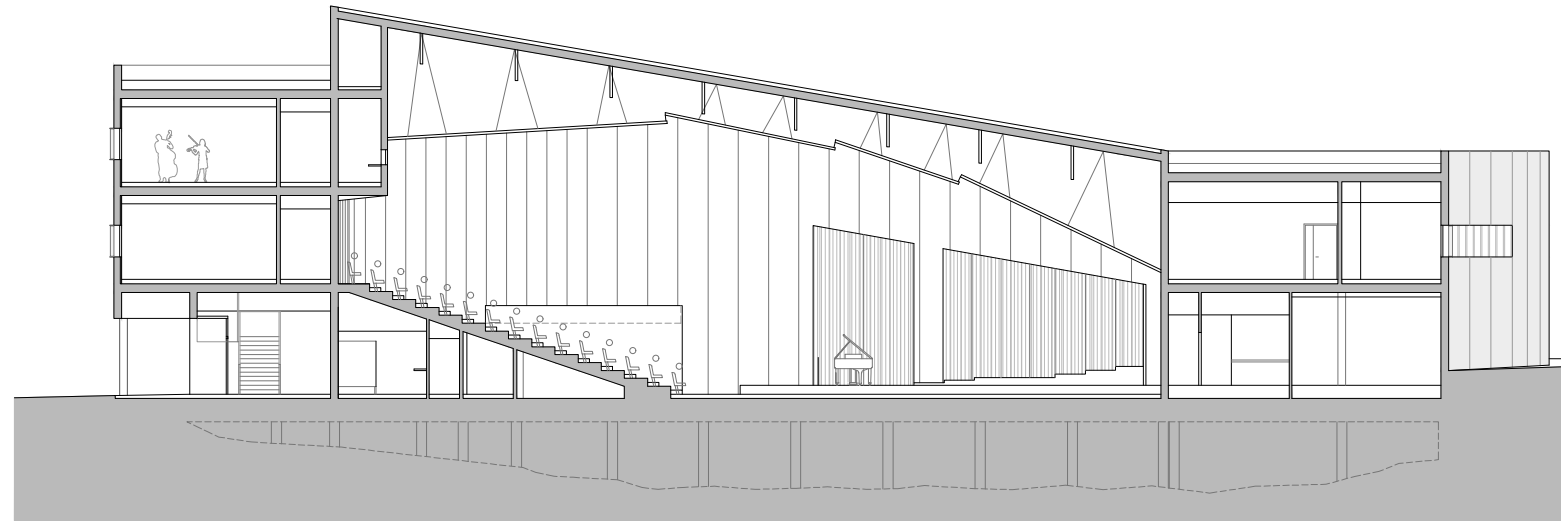
PLANTA PRIMERA  
E 1:300



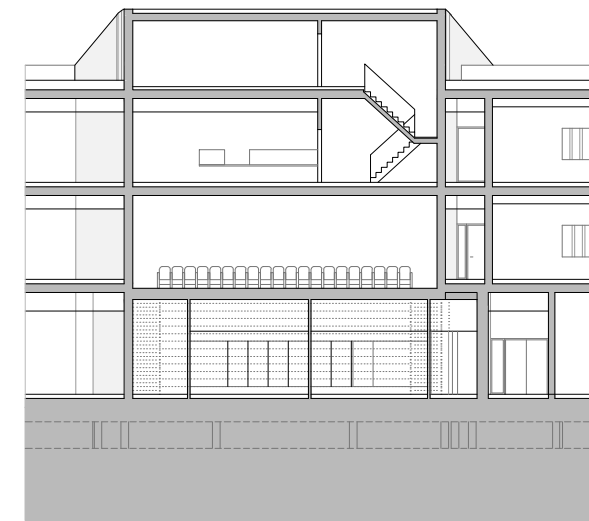
PLANTA SEGUNDA  
E 1:300



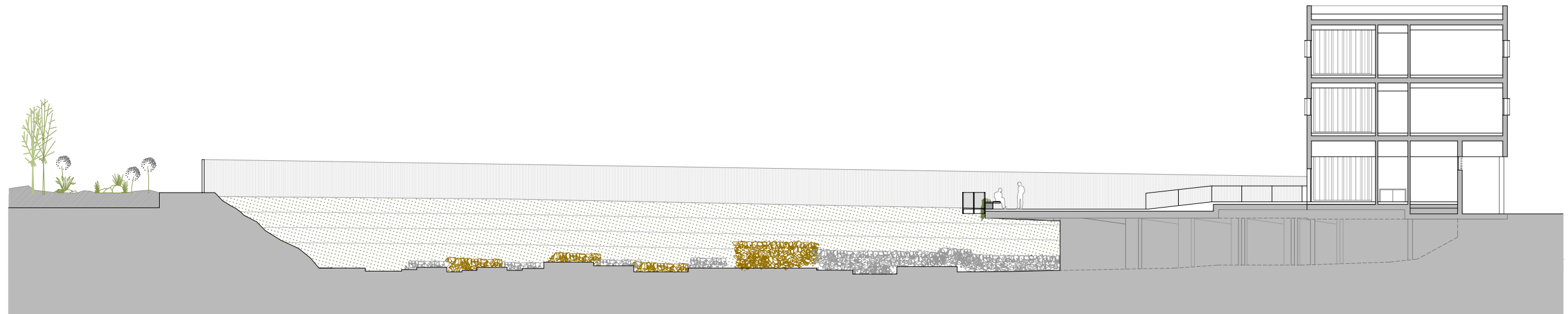
A. SECCIÓN TRANSVERSAL POR AUDITORIO



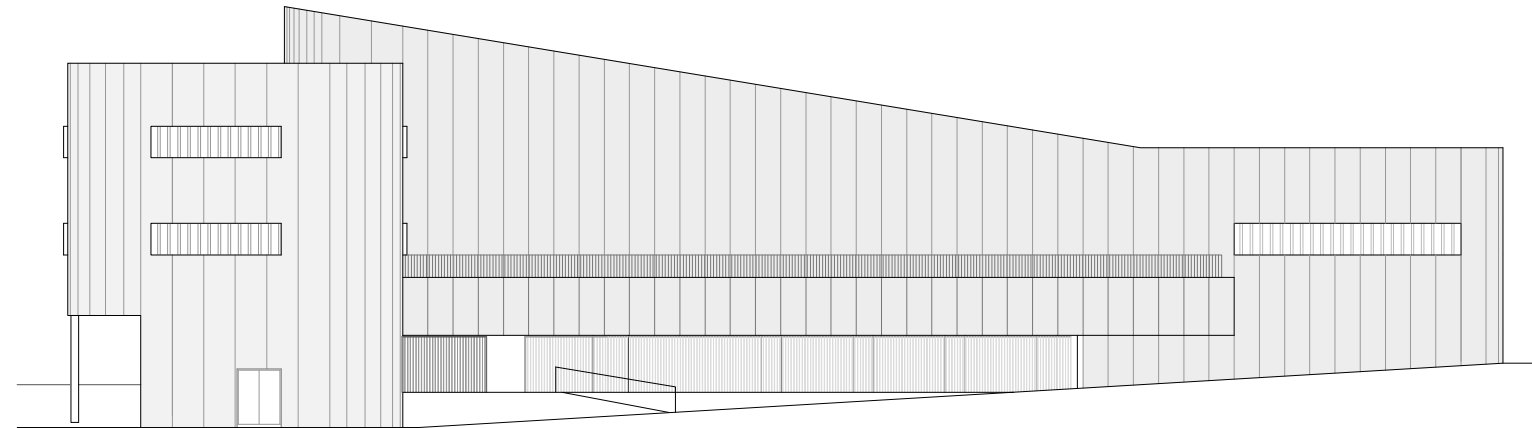
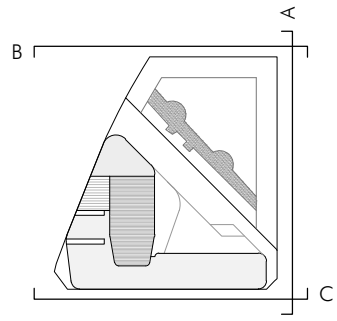
B. SECCIÓN LONGITUDINAL POR AUDITORIO



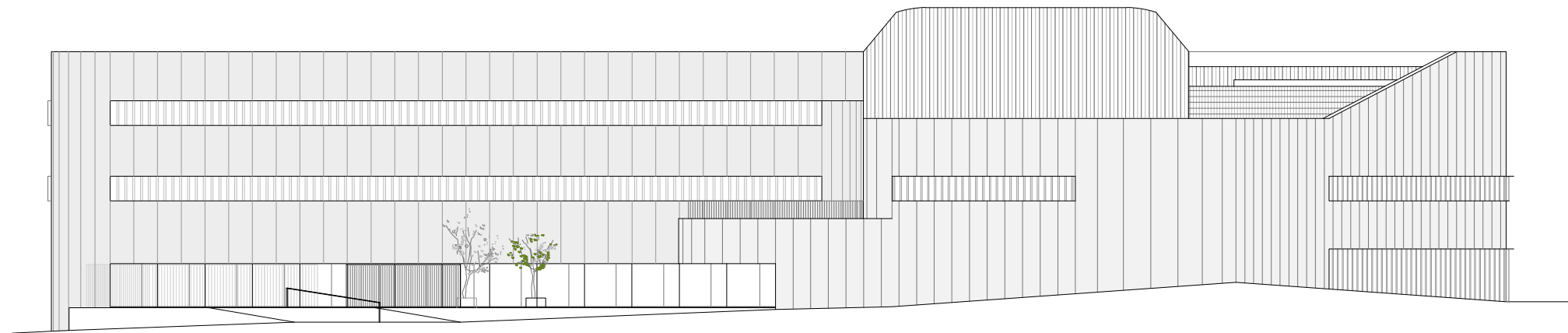
C. SECCIÓN POR CABINA TÉCNICA Y ESCALERA AUDITORIO



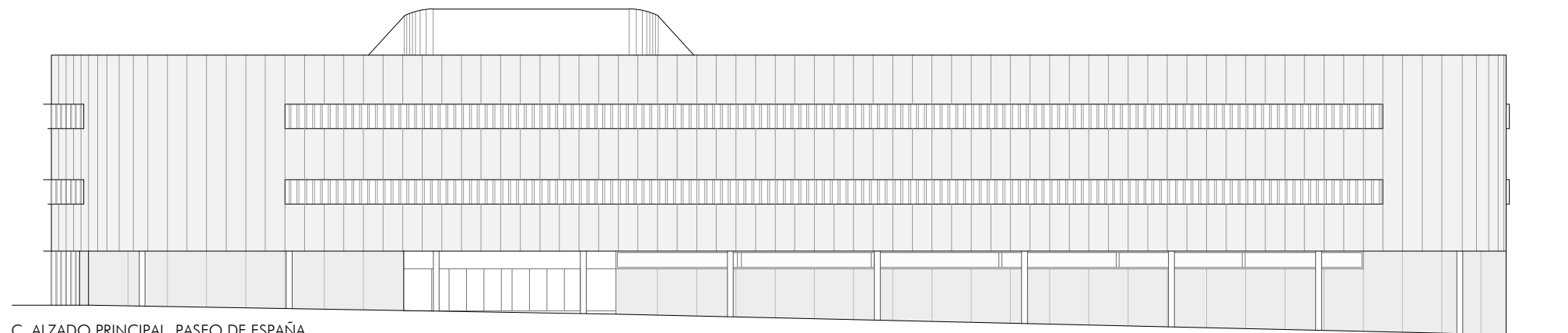
D. SECCIÓN LONGITUDINAL POR RESTOS ARQUEOLÓGICOS



A. ALZADO NORTE. CALLE HENRY DUNANT



B. ALZADO OESTE



C. ALZADO PRINCIPAL. PASEO DE ESPAÑA