



Lincoln Bishop
University

Step into
Greatness

2026

lincolnbishop.ac.uk



“

**Coming to
Lincoln Bishop was
the best decision
of my life.**

Matt
BA in Military History



An exciting New Chapter.....08

Our history 11

Open days12

Why choose us? 14

Lincoln Bishop Beyond
the Classroom16

Where on earth 18

Living at Lincoln Bishop.....20

Our campus23

It's not all work, work, work24

Lincoln Bishop University

Students' Union26

Your Future 28

Where will it all lead?30

Building your Graduate Attributes.....31

Unique opportunities.....32

Supporting You 34

How we help36

Your wellbeing.....38

Your money39

Education for everyone40

Our courses 42

How we teach, how you'll learn42

Our courses – at a glance43

Foundation Degrees.....46

Top Up Degrees.....52

Undergraduate Degrees.....58

Routes into Teaching.....70

Postgraduate Training

Qualifications72

Master's Degrees.....78

Higher and Degree

Apprenticeships.....86

Doctoral Study.....92

Further info 94

How to apply95

Our entry requirements96

International students.....97

Fees and finance98

Find out more.....98

Maps100

Index.....102

The small print.....104

We've been here since 1862, which makes us one of the oldest higher education institutions in the UK. We've changed a lot of people's lives for the better over the past 160 years. We've also changed ourselves; we are now the leading university in England for teaching quality, student support and student experience. Take a look through our prospectus to see why and find the right course for you.

lincolnbishop.ac.uk/opendays

Welcome from the Vice Chancellor

Hello, I'm Andrew, the Vice Chancellor.
I'd like to say how pleased I am you're interested to find out about Lincoln Bishop University.

Whether you join us to study on campus, online, or on an apprenticeship, we're well known for being a friendly university that supports our students to realise their ambitions.

Voted top for teaching in the 2025 National Student Survey, we're fascinated by the subjects we teach and keen for you to learn with us. We'll prepare you for your chosen profession, with a wide range of routes to employment available. We make sure that studying at Lincoln Bishop leads to the knowledge, skills and experiences for successfully supporting your career; and if you're already ambitious for postgraduate study, we can help with that too.

A warm welcome awaits at our Open Days, and I do hope you'll join us: it would be brilliant to welcome you to Lincoln Bishop University.

Professor Andrew Gower
Vice Chancellor



An exciting new chapter in our proud history

In September 2025, we officially changed our name to Lincoln Bishop University, after originally adopting university status as Bishop Grosseteste University in 2012.

This change marks an exciting new chapter within our history, one that celebrates our proud heritage, deepens our connection with the city of Lincoln, and looks confidently to the future. We're still the same supportive, welcoming university, just with a new name that reflects who we are and where we're going.

With over 160 years of experience in teaching, we continue to have a meaningful reputation in education and teacher training, offering a wide variety of study options across different subject areas, as well as insightful opportunities for research and innovation.

We place people at the heart of what we do and are committed to empowering individuals to shape society from this chapter to the next. As Lincoln Bishop, we remain dedicated to our social purpose and are here to provide you with the education, skills and support to make an impact – as a student and beyond.



“

The support I received was truly outstanding. The tutors were always readily available, made me feel like more than just another student and were genuinely invested in my personal growth.

Anna

Primary Teaching Students with QTS

Our History

Every story starts somewhere, this is ours.

Our story started in the 1860s as an Anglican teacher training college for women. Since then, we've grown, adapted and modernised over time to become the leading and thriving university we are today, sitting on a single campus in the heart of historic Lincoln. Every student that joins us is supported in developing the skills needed for a life of impact. With the guidance and community to get you there, you can turn your passions into a career that changes lives and shapes the future.

We're still experts in teaching and education - we have been doing it for over 160 years after all - but we've got a wider portfolio of exciting degree courses than ever before. We currently educate over 2,000 students in a wide range of subjects, from Undergraduate Degree level to PhD, and much more in between.

We are the number one ranked university in the country when it

comes to teaching quality, student support, learning opportunities and more. We are also ranked number two in the country for student experience.

Our promise to you

Every student that joins us is supported in developing the skills needed for a life of impact. With the guidance and community to get you there. So that you can turn your passions into a career that changes lives and shapes the future.

You can see and hear firsthand how we live up to our promise by visiting us on one of our open days.

Find out more about our story

lincoln.bishop.ac.uk/about

Open Days

Imagine it – you walk onto our campus; it feels like home. The buzz, the energy, the sound of laughter. See for yourself at our Open Days.



Exploring the universities you're thinking of applying to is, of course, always a good idea. You want to see where you'll be living, where you'll be going to lectures, and where you'll be spending your free time.

Here are five reasons you don't want to miss one of our Open Days:

1. Explore the campus

Walk the grounds, check out our study spaces, and imagine yourself here.

2. Meet the staff

Get insights from the lecturers who will be teaching you.

3. Talk to current students

Hear directly from the people living our university experience.

4. Discover Lincoln

See why students love this vibrant, historic city.

5. Get answers

Whether it's about accommodation, fees, or student life, we're here to help.

We'd love for you to experience us in person.

So, come and pay us a visit to find out about our university from those who know it best.

lincolnbishop.ac.uk/opendays



Why choose us?

We don't just educate – we empower.

We're ranked 1st in the country for Student Support, Teaching Excellence, and Teaching Quality.

Every student is at the heart of everything we do, earning us top rankings for Student Voice*, Academic Support*, Learning Resources*, Learning Opportunities*, and Assessment and Feedback*. With a top 5 in the country for Graduates in Employment or Further study**, we're here to help you achieve your goals. With us you'll find a community that listens, supports, and sets you up for success. Are you ready to take your first steps into greatness?

* Data taken from National Student Survey 2025. Measured by % positivity. Excludes specialist HE/FE.
** Data taken from Graduate Outcomes Survey 21/22 cohort.

1st
for Student Support

(Daily Mail University Guide 2025)

1st
for Teaching Excellence

(Daily Mail University Guide 2025)

1st
for Teaching Quality

(The Times and Sunday Times Good University Guide 2025)

1st
for Learning Opportunities

(National Student Survey 2025)*

1st
for Teaching

(National Student Survey 2025)*

1st
for Assessment and Feedback

(National Student Survey 2025)*



Lincoln Bishop Beyond the classroom

We are dedicated to nurturing our students' potential both academically and personally.

We provide a supportive environment that encourages every student to excel in their studies and pursue their passions beyond the classroom. Our commitment to student success is reflected in the achievements of our students, who make meaningful contributions to their communities and beyond. Through innovative programmes, dedicated academics, and a vibrant campus life, we empower our students to reach their full potential and make a positive impact on the world.

1. Ivan Goslett From Refuse Collector to Published Author

Ivan Goslett, an undergraduate student, self-published his book *The Philosophy and Musings of a Lincolnshire Binman*. Originally from South Africa, Ivan moved to the UK at 30 and began his studies at the University in 2021. Working part-time as a refuse collector, Ivan noticed children's fascination with his role and in particular, the lack of preconceived judgement from them, when compared to the rest of society. His story has gained national attention, and his book is available in local Lincoln bookshops. Ivan is already planning his second book.

2. Daniel Swift Brings Inclusive Theatre to the West End

Daniel Swift, founder of Concrete Youth, worked on the first West End production specifically designed for audiences with profound and multiple learning disabilities (PMLD). His sensory pantomime, *Sensory Cinders*, explored themes of identity and self-expression and featured sensory materials by Henshaws Arts & Crafts. This groundbreaking show marks a significant milestone in inclusive theatre. Daniel credits the University for its transformative impact on his practice and ongoing support from the Drama department.

3. Kayleigh Denman Nominated for the Daisy Award

Lincoln Bishop graduate Kayleigh Denman was nominated for the Daisy Award by a patient she cared for as a student nurse, making her the first student at East and North Hertfordshire NHS Trust to receive this nomination. Kayleigh credits her BSc (Hons) Health & Social Care degree from the University for teaching her the importance of evidence-based, compassionate care. She is now set to start an MA in Health & Social Care Leadership here, aiming to further her career in the sector.

Where on earth

Looking for unexpected delights and unforgettable moments? That's life in Lincoln.

Lincoln is one of the UK's hidden gems. A small yet mighty city, filled to the brim with history, culture, nightlife and opportunities.

The city makes us the ideal springboard for your future – a great mix of city connectivity and campus community. Opportunity is never far away here, with links to industry on our doorstep. Lincoln has undergone a lot of change in the past few years and is a thriving cultural hotspot. It's a unique mix of old and new, with the medieval Cathedral and Castle dominating the skyline, overlooking the modern city centre below.



Roughly one in every five people who live in Lincoln are students, and it really is a city perfectly tailored to those in higher education. Navigating around Lincoln on foot is simple, from the cobbled streets uphill to the modern city centre and waterfront downhill. With a variety of live entertainment, cultural attractions and nightlife hotspots across the city, there's plenty to keep you entertained.

In Lincoln, you'll find everything you need and more – the perfect background to make memories that'll last a lifetime.



Living at Lincoln Bishop

There's no denying it – one of the most daunting aspects of starting university can be moving away from home to somewhere new.

That's why we do everything we can to make your move from home to university as smooth and hassle-free as possible.

We have a great selection of rooms available to suit every preference, all designed to create a sense of community and make the transition to university life as smooth as possible. As a first-year student, we guarantee you accommodation.

We are proud to be 1st for University Halls and Student Accommodation in the UK*. Voted for entirely by our own students, you can take their word for it that with us, a new place to rest your head will feel like a home away from home.

Student Village – Opened in September 2024, this gated student community features a mix of en-suite town houses and apartments, a 24/7 security, cinema room, laundry facilities and communal bike storage.

Wickham Hall – Contemporary and comfortable en-suite rooms in shared flats, with six students sharing a communal kitchen and living area.

Constance Stewart Hall – A large, four-floor accommodation block with 91 individual study bedrooms and communal kitchens and living areas on each floor.



* WhatUni Student Choice Awards 2025



lincolnbishop.ac.uk/accommodation



Your campus, your home

We're very proud of our campus. It's our little green haven where everyone is welcome, and you can make your home.

We've been here for an extraordinarily long time, developing and growing along with the city around us.

Some of our buildings date from the 1840s, while others are brand new, so there's an enchanting mixture of past and present. Flexible teaching and learning spaces, a cosy coffee shop, restaurant, gym, sports hall, and acres of sports fields – all just a few seconds walk from each other.

However, probably the first thing you'll notice when you step foot onto campus is just how beautiful and green your surroundings are. Our campus is filled with trees and grassy open spaces, plus Gizmo our friendly campus cat. All of this provides a natural and relaxing environment in which to live and work.

After all, who wants to find themselves stuck in a dreary concrete jungle, when they could be studying with the grass between their toes?

It's difficult to fully appreciate our campus unless you see it for yourself. So come along and visit us on an Open Day and explore what we've got to offer. Wander the fields, relax on the grass with a cuppa, or just sit underneath a tree watching the world go by.

“

When I came here for an Open Day, I loved the campus. It's big enough that you've got great facilities in place, but not too big that it's overwhelming.

Peter

PGCE Secondary MFL



It's not all work, work, work

Of course, the academic side of things is only one part of going to university. You also need to make sure there's plenty to do in your spare time.

Within our single site campus you'll find plenty of places to spend time with friends and entertain yourself. The Students' Union is the lively heart of campus, with a bar and regular events throughout the year. Our quirky Alice-in-Wonderland-themed coffee shop Curiositea will soon be your new favourite place to grab a slice of cake and a hot chocolate with all the trimmings. And our Refectory allows you to get a range of hot meals, light snacks, and great hot drinks.

Need a little physical activity in your life? Don't worry, we've got you covered. Our Sport & Fitness centre contains a spacious sports hall and gym, and you'll also have access to our expansive playing fields here on campus. Our facilities are more accessible than ever, offering beginner's sessions and one-on-one support for those new to fitness or just building their confidence. So whether you opt for a personal training session in the gym, some fitness classes in the sports hall, or take part in a wide variety of team sports outdoors, there's plenty to get you off the sofa.



By students, for students

Meet Lincoln Bishop University Students' Union



Our Students' Union is run for students, by students. Alongside a dedicated and spirited staff team, Lincoln Bishop University Students' Union exists to represent every student at the University.

The Students' Union is an independent registered charity and ensures something is on offer to excite every student. Passionate about the academic success and wellbeing of the student community, Lincoln Bishop University Students' Union is committed to providing support, running exciting student-led events, and championing the needs and interests of each student.

Lincoln Bishop University Students' Union also runs an academic representation scheme to make sure the course you study is run fairly and that you feel supported and confident in what you are doing. The Students' Union provides a range of representation and advice services and can assist with anything affecting Lincoln Bishop students.

Student leaders and officers are elected by the student community. The Students' Union values the opinions of its members, so individuals are encouraged to step forward and be the change they want to see on campus. We are proud of all Lincoln Bishop University Students' Union Alumni, many of whom we are still in contact with,

or continue to work with as part of the wider Lincoln Bishop community.

Being part of Lincoln Bishop University Students' Union is about community, inclusivity, and diversity. All students are welcome at all events, whether that's joining the vibrant Freshers' Week celebrations, live music nights at the campus Union Bar, or the various clubs and societies on offer. The Students' Union wants everyone to feel confident that they belong. Students are welcome to set up new clubs and societies to meet their interests, or join one of the many existing options such as Book Club, Poker Society, Boxing Society, Women's Rugby, Performing Arts Society and more.



LINCOLN BISHOP UNIVERSITY
STUDENTS' UNION

Your future

We prioritise your future.

We match your interests with opportunities; take the time to discover your goals and ensure you're on the right path.

With guidance and support throughout your journey, you'll be ready for every venture (and adventure) that comes your way.

We are all about supporting you to build confidence. It's about growth and finding yourself amongst a community of like-minded, supportive peers.

Think of it as a stepping stone. A place that'll help you become the person you want to be, with the chance to connect with the information, people, and businesses that'll make a big impact on your life.

With us you'll get a taste of what's to come. So you'll graduate not just work-ready, but world-ready.

“

The range of additional opportunities provided by the course and Lincoln Bishop has been amazing. In my second year, I got the opportunity to travel abroad, working with specialists across southern India and then representing Lincoln Bishop as an ambassador in Dubai.

Laura

Special Educational Needs, Disability & Inclusion

Our Career Readiness team is all about extending your experience beyond your degree. As a Lincoln Bishop student, the opportunities after you graduate are boundless. Our dedicated team are here to help you decide what your perfect role is, and work with you to hone your skills to allow you to find an opportunity that's perfect for you. Our professionally trained careers advisors are on hand to help you with every step of your journey – at Lincoln Bishop and beyond.

lincolnbishop.ac.uk/careers

Where will it all lead?

Starting university marks a time of great possibilities. The world opens up before you, but choosing your path forward isn't always clear.

We're here to guide you, encourage you, develop you along the way and provide all the opportunities for you that we possibly can – and who knows where you'll end up?

Going to university isn't just about the job you'll get at the end of it. We're extremely proud that the employability rates of our graduates are consistently very high. This means you can study for your degree knowing that your future is in safe hands. We have lots of things in place to help you develop your career prospects. Such as workshops and events, jobs fairs, and access to a network of employers, all of which aim to support you to build your skills and experience so you can stand out from the crowd.

Building your Graduate Attributes

We know that the world is rapidly changing. Increased competition for jobs and high expectations in all areas of our lives mean that, alongside your degree, you'll want to develop personal skills to succeed in the world.

We recognise that, when you complete your studies with us, you'll want to be empowered with skills and attributes to take out into the wider world. Every one of the courses we offer have our Graduate Attributes embedded within them, and you can develop these further through our Excellence Awards.

These attributes are designed to support you in gaining skills which will set you apart from other graduates. These are:

Academic literacies

Covering the range of academic skills that you will develop during your studies to enhance your assignments and ensure you are well-equipped for the graduate job market.

Employability

Supporting you to develop the knowledge, skills, behaviours and attitudes which will enable you to be successful in work and life.

Information literacy

Being able to search for, evaluate and manage information effectively and responsibly, empowering you to develop skills that are highly prized in the world of work.

Digital fluencies

Developing a range of digital capabilities to enhance your studies, helping you to get the most out of your assignments, and prepare you for the graduate job market.

Being enterprising

Gaining the skills, confidence and resilience you need to embark on new ventures, spot opportunities and create positive change for yourself and the community.

Global citizenship

Discovering the skills to participate confidently, responsibly, and imaginatively in a much wider world.



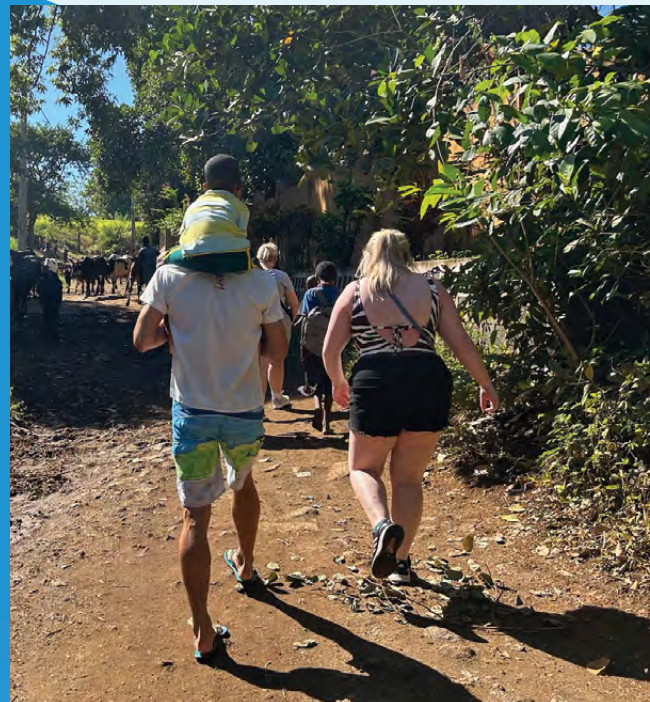
Unique opportunities

University is a time of opportunity – a time for you to discover new things and be exposed to unique possibilities. We'd need a prospectus twice the size of this one to list them all!

However, one area in which we excel is enterprise, something which is embedded throughout all our curriculum areas.

And our Students' Union is, as you would expect, a hive of opportunity. You'll have the chance to connect with like-minded people through a wide range of clubs and societies. Run by you,

the students, these include such areas as British Universities & Colleges Sports league football, women's rugby, dance, badminton, dodgeball, book club, performing arts, gaming, and Pride, to name but a few. Your Students' Union also runs Freshers Week, with events and activities to settle you into university life and make your time with us exceptional.



Getting involved with our Students' Union (Lincoln Bishop University Students' Union) will allow you fully to immerse yourself into university life. You'll have the chance to have fun, experience new and exciting things, and meet loads of interesting people along the way. Lincoln Bishop University Students' Union exists to represent students and ensure the student voice is heard.

lbusu.co.uk

If you need help with applications or your CV, our Career Readiness team will be on hand to guide you in your work-life.

If you'd like to earn while you learn, you can access job opportunities from the moment you join our community. You'll find part-time roles, graduate schemes, teaching abroad, and summer school opportunities.

You'll also be able to attend our Part-Time Jobs Fair, where you can meet potential employers, including on-campus options. Whatever your plans, we can help.



Supporting you

Our lively campus is built on an understanding that you're seen for your talents, passions and skills, not just your grades.

That means that you can expect boutique vibes – a tight-knit yet perfectly formed, one-of-a-kind, specialist university offering.

We find out what's most important to every student and make sure you get a unique experience, tailored to you.

We're all about you – that's what we do. Speaking up and speaking out for you when you need it is part of who we are, and these are traits our students uphold too.

We all have each other's backs here – it's like being part of a family away from home.

Inclusivity is woven into the fabric of everything we do.

It comes from our formative years training women (who at the time had few rights and little power in society) to become teachers – our design was to identify their needs and best serve them for success.

And we pay it forward to each generation that comes through our doors, because that's how progress happens.

Our city location makes us accessible for every student, while our tight-knit campus is perfect for helping individuals to thrive.

We know that inviting a wide range of perspectives to the table makes for exciting conversations and learning experiences. So being as inclusive as possible is something we've taken seriously since day one, all the way back in 1862.



How we help

Our students are always our top priority. You can be sure that we'll offer you all the support you need. From before you even make your application right through to the day you graduate (and beyond).

Our Student Advice & Wellbeing team are experts in all aspects of higher education life, and are on hand to offer non-judgmental advice and counselling services. They can offer support in a wide range of areas, including housing, financial matters, employment, legal issues and much more.

We have a proactive and dedicated Students' Union, whose main aim is to represent all students and ensure they have the best experience possible. Their welfare services are designed to make sure that every student is happy, healthy, and having fun.

Our Chaplaincy team also play a crucial role in the day-to-day care and support of our students, irrespective of religious affiliation or beliefs. As a university, we welcome students and staff of all faiths and none. Our Chaplaincy team offer a safe space to talk, enjoy companionship and listen whenever you may need it.

And that's just the tip of the iceberg when it comes to ways we support you. You can see why we feel so confident that we can offer the help and support you need when you need it.

“
Lincoln Bishop has the most amazing academic support you can turn to. If you need any assignment help, they're the ones to go to.

Morgan
TESOL

The Hub comprises six professional service teams committed to enhancing your health and wellbeing, alongside providing guidance for your academic work and study skills. Our team ensures you are directed to the appropriate support and information throughout your time at Lincoln Bishop.

The teams within The Hub include:

- Career Readiness
- Digital Learning
- Learning Development
- Library Services
- Student Advice & Wellbeing
- Student Engagement

Library Services offer a wide variety of resources, services and facilities to help you complete your studies. It provides over 146,000 physical materials and millions of electronic resources, a range of study areas (including bookable rooms), computers and wi-fi, printing and copying, document supply services and a team of friendly staff to provide help when you need it.



Your wellbeing

We fully understand that being a student can be stressful at times, so we're here to help with your wellbeing during your time at university.

We have dedicated quiet spaces across campus to ensure that you can find somewhere peaceful to rest and relax. We have a secluded peace garden and a space dedicated to meditation, prayer, wellbeing, and relaxation. There's also a wellbeing collection in our library, consisting of self-help books and feel-good films. As a student you can be sure that your wellbeing is our priority.

“
You tend to get to know quite a lot of people on campus and it's really friendly. Everyone's really helpful and it's a great place to learn.

Spencer
Psychology with Foundation Year



Your money

There's no getting away from the fact that, for most people, money is a little tighter than it used to be.

But an increased cost of living doesn't mean you need to rethink your university journey. We firmly believe that higher education should be open to anyone who wants to study.

We have a variety of bursaries, grants and other financial support avenues available, depending on your personal circumstances. Our experts are always on hand to offer advice on loans, fees, support and money management, even before you apply to us. You can get face-to-face advice about your own personal financial situation at one of our Open Days, or by speaking to our Student Advice & Wellbeing team.

lincolnbishop.ac.uk/money

“
Being part of such a small uni is so good for your personal and professional development.

Kaylee
Education Studies and English Literature



Education for everyone

If you haven't picked up on our enthusiasm so far, education is something we're deeply passionate about. We believe that access to higher education should be available to everyone who is capable of making use of the opportunity. But we're also aware that you may feel there are barriers in the way stopping you from taking the next step.

Maybe you feel too old to be a university student?

Maybe you feel you can't afford to give up work?

Maybe you're the first in your family to consider going to university, and it's an unknown and scary prospect?

We totally understand. But don't worry, we're here to help. We have experts on hand to assist with any questions or concerns you may have.

They'll be able to demonstrate how age is no barrier whatsoever to obtaining a degree. They'll talk you through our range of part-time study options designed to fit around your work.

And they'll reassure and guide you through the process of applying, enrolling and beginning your studies.

Through our contextual admissions process, we can make achievable offers to those who have faced disadvantages in their lives by reducing the UCAS tariff points required for a course. The process considers your background, achievements, challenges and personal circumstances, giving people who might not otherwise have been able to pursue their desire of a university degree a chance to do so.

So have a chat with us. We're sure that you'll find those barriers preventing you becoming a university student will begin to disappear.

Accessibility - If you have a disability, mental health condition or a specific learning difference, we have plenty of help and support available when you are making an application. We can provide information about the support package you can expect to receive during your studies. Then, once you're a student, we'll help liaise between you and other relevant parties (e.g. your tutors) to ensure you get all the support you need throughout your time with us.

lincolnbishop.ac.uk/studentadvice



Our courses

How we teach, how you'll learn

We don't believe in a 'one-size-fits-all' method of teaching.

Instead, we shape our methods to suit each subject area and each group of students, combining the best aspects of traditional university teaching with innovative techniques to promote participation and interactivity. This means you'll get a university experience totally centred around you.

Our staff and students work together in a friendly and supportive atmosphere, to ensure you can learn, develop and achieve in the best possible way. You'll probably find yourself being taught in a variety of ways, from tailored lectures, tutorials and seminars to practical workshops, coursework and work-based placements.

Placements are a key part of degree level study with us. With the vast majority of our undergraduate degree courses having opportunities for placements in workplace settings built into them. They'll provide you with a deeper learning experience, allowing you to apply the skills and knowledge you'll gain from your studies to real world situations. They're designed to give you the valuable experience which will help to boost your future career prospects.

“
The university has helped immensely in preparing me to take my next steps. I never thought I'd achieve this much and get this far and it's only thanks to the university that I've been able to do it. It is my spiritual home, and I mean every word of that. I've learned so much here and I can't fault it.

Kate
MA in Education

Courses at a glance

Page **Foundation Degrees**

47	Early Childhood Education
47	Teaching & Learning
48	Childhood Youth & Families in Practice
48	Health & Social Care Practitioner (Grantham)†
49	Professional Practice in SEND (Grantham)†
51	Early Childhood Education in Practice (Grantham)†
51	Education in Practice (Grantham)†

Top Up Degrees

53	Primary Teaching Studies with QTS
53	Early Childhood Education
54	Childhood Youth & Families in Practice
54	Early Childhood Education (Graduate Practitioner)
55	Teaching & Learning
57	BA (Hons) Counselling Practitioner
57	BA (Hons) Professional Practice in SEND (distance learning)

Page **Undergraduate Degrees**

59	Archaeology and History
59	Business Management
59	Business with Finance
59	Business with Marketing
60	Counselling Practitioner
60	Criminology
61	Early Childhood Studies
61	Education Studies
61	Education Studies and English
61	Education Studies and History
61	Education Studies and Sociology
61	Education Studies and Special Educational Needs, Disability & Inclusion
61	Education Studies and Sport
61	Education Studies and TESOL
61	Education Studies and Theology, Philosophy & Ethics
62	English and History
62	English Literature
62	English Literature and TESOL
62	English Language & Teaching
63	Health & Social Care
63	Health & Wellbeing in Early Childhood
64	History
64	History and Theology, Philosophy & Ethics
64	Military History
65	Primary Education with QTS
65	Psychology
65	Psychology and Business
65	Psychology and Counselling
65	Psychology and Early Childhood Studies
65	Psychology and Education Studies
65	Psychology and English

†Studied at Grantham College
*Subject to validation
All of our courses can also be studied with a Foundation Year, with the exception of those marked with a diamond (◊) in the list above.

Page	Undergraduate Degrees
65	Psychology and Sociology
65	Psychology and Special Educational Needs, Disability & Inclusion
65	Psychology and Sport
66	Sociology
66	Sociology and Sport
66	Special Educational Needs, Disability & Inclusion
66	Special Educational Needs, Disability & Inclusion and Early Childhood Studies
66	Special Educational Needs, Disability & Inclusion and Sociology
66	Special Educational Needs, Disability & Inclusion and Sport
66	Special Educational Needs, Disability & Inclusion and Theology, Philosophy & Ethics
67	Sport, Coaching & Physical Education
67	Theology, Philosophy & Ethics

Page	Postgraduate Training Qualifications
73	PGCE Primary (3-7)
73	PGCE Primary (3-7) Part-time
73	PGCE Primary (5-11)
73	PGCE Primary (5-11) Part-time
74	PGCE Secondary (Art & Design)
74	PGCE Secondary (Business Studies)
74	PGCE Secondary (Computing)
74	PGCE Secondary (Dance)
74	PGCE Secondary (Design & Technology)
74	PGCE Secondary (Drama)
74	PGCE Secondary (English)
74	PGCE Secondary (Geography)
74	PGCE Secondary (History)
74	PGCE Secondary (Mathematics)
74	PGCE Secondary (Modern Foreign Languages - French, German & Spanish)
74	PGCE Secondary (Music)
74	PGCE Secondary (Physical Education)
74	PGCE Secondary (Physical Education with EBacc subject)
74	PGCE Secondary (Science with Biology)
74	PGCE Secondary (Science with Chemistry)
74	PGCE Secondary (Science with Physics)
74	PGCE Secondary (Social Science)
75	iPGCE
75	Assessment Only Route to QTS
76	Certificate in Education (Teaching Post-16 and Further Education)
76	Professional Graduate Diploma in Education (Teaching Post-16 and Further Education)
76	Professional Graduate Diploma in Education - Teaching Post-16 and Further Education (SEND)
76	Certificate in Education - Teaching Post-16 and Further Education (SEND)

Page	Master's Degrees
79	Master of Business Administration (Strategic Leadership)
79	MA Children's Literature & Literacies
80	MA Education
80	MA Early Years Education
81	MA Education (EAL)
81	MA Educational (Leadership and Management)
82	MA Education with TESOL
82	MA English Literature
83	MA Health & Social Care Leadership
84	MSc International Business
84	MA International Education
85	MA Special Educational Needs & Disability
85	MA Theology & Religious Studies

Higher & Degree Apprenticeships	
87	Career Development Professional Apprenticeship
87	Senior Leader Apprenticeship
88	Chartered Manager Degree Apprenticeship*
88	Project Manager Apprenticeship
90	Primary Teacher Apprenticeship (QTS)
91	Secondary Teacher Apprenticeship (QTS)

Doctoral Study	
93	EdD
93	PhD

[†]Studied at Grantham College
*Subject to validation
All of our courses can also be studied with a Foundation Year, with the exception of those marked with a diamond (◊) in the list above.

Foundation Degrees

If you want to gain a qualification relevant to your career without having to leave work, then our foundation degrees are a perfect choice.

They allow you to combine workplace learning with academic study and will usually see you spending one afternoon and evening a week at Lincoln Bishop.

A foundation degree is broadly equivalent to the first two years of a Bachelor's degree. And many of our Foundation Degree graduates choose to continue onto one of our top up degrees to gain a full honours degree.

If you want to enhance your career whilst continuing to work, a foundation degree is perfect, as it allows you flexibility of study and is designed with employers' needs in mind.

lincolnbishop.ac.uk/foundationdegrees



Early Childhood Education

Designed for those working with children in the early years sector, this is a dynamic and comprehensive programme that blends practical experience with campus-based learning sessions, carefully designed to accommodate your existing work or volunteer commitments. With just one weekly on-campus session, you can seamlessly continue your career journey while enhancing your skills and knowledge over a two-year period. This course serves as the first two years of a full-time degree program, providing you with a solid foundation for your educational aspirations.

FdA, 2 years, full-time blended

Typically, a minimum of one year's experience in practice is required. Students are expected to commit at least two days a week, amounting to a minimum of 12 hours per week, either as an employee or a volunteer. Level 3 Diploma, NVQs, access to Higher Education programmes, or relevant subject or vocational qualifications are generally expected.

Why study this course?

- Continue working or volunteering while pursuing your degree, providing you with valuable practical experience alongside your academic studies
- Blended learning delivery, small number of days on campus and remote face to face sessions

Courses available

- **FdA Early Childhood Education**

lincolnbishop.ac.uk/fdaecep



Teaching & Learning

This course is designed for practitioners working in a range of settings that support learning, including Early Years Foundation Stage classes, primary and secondary education, further and adult education. Over the two-year programme, you will build on your existing experience of working with learners and examine how your practice links to theoretical concepts, helping you to understand the needs of learners and to reflect on and support your professional development. You will study important topics such as inclusion, equality, diversity, learning, and assessment and learn about different approaches to teaching (pedagogy) through live online teaching and occasional campus sessions.

FdA, 2 years, full-time blended

Typical entry requirements - a minimum of one year's experience in practice with a minimum of two days a week (minimum of 2 days per week working in a relevant role, either as an employee or a volunteer).

Why study this course?

- This programme allows you to continue working or volunteering while pursuing your degree, providing you with valuable practical experience alongside your academic studies
- Blended learning delivery, small number of days on campus and remote face to face sessions

Courses available

- **FdA Teaching & Learning**

lincolnbishop.ac.uk/fdateachlearn

Open Days

Get to know our campus and surroundings on an Open Day
lincolnbishop.ac.uk/opendays



Childhood Youth & Families in Practice

Have you ever thought about working towards a degree, but decided against it as you are already in employment or volunteering and don't want to give that up? Our FdA Childhood, Youth and Families in Practice course is designed for those working or volunteering with children, young people, families and communities, for example in the youth sector, in residential care, in pastoral roles in schools with children and young people aged 9-24 years.

FdA, 2 years, full time blended

Typically, a minimum of one year's experience in practice is required. Students are expected to commit at least two days a week, amounting to a minimum of 12 hours per week, either as an employee or a volunteer. Level 3 Diploma, NVQs, access to Higher Education programmes, or relevant subject or vocational qualifications are generally expected.

Why study this course?

- Blended learning delivery, small number of days on campus and remote face to face sessions
- Earn While You Learn: This programme allows you to continue working or volunteering while pursuing your degree.

Courses available

- **FdA Childhood Youth & Families in Practice**

lincolnbishop.ac.uk/fdacyfp



This course will be delivered at Grantham College.

Health & Social Care Practitioner (Grantham College)

Have you ever thought about working towards a degree, but decided against it as you are already in employment or volunteering? Do you have an interest in working with adults in a care or residential setting? If so, this course will equip you with the knowledge, understanding and practical skills to help you develop to a higher level and broaden your career opportunities in the care and support of individuals, families, and wider communities.

FdSc, 2 years, full-time

Typical entry requirements - a minimum of one year's practical experience (preferably two years) in an employed or voluntary capacity in a relevant, professional Health and Social Care setting, a relevant Level 3 qualification, and a voluntary or paid role in a relevant, professional Health and Social Care setting for at least 12 hours a week throughout the duration of the programme.

Why study this course?

- This course is ideal for developing existing practice by extending underpinning knowledge and understanding of the sector, through detailed examination of associated theories and concepts
- A combination of classroom work-related learning and practice-based learning allows you to work in the Health and Social Care setting alongside studying at Grantham College

Courses available

- **FdSc Health & Social Care Practitioner (Grantham College)**

lincolnbishop.ac.uk/fdahscp

“

Everyone is very friendly at the University and there's always someone you can talk to. I could not have felt more supported anywhere else.

Rose

English Literature



This course will be delivered at Grantham College.

Professional Practice in Special Educational Needs & Disability (Grantham College)

This course is designed for people already working in educational settings with children, young people and/or adults with special educational needs and disabilities (SEND). This course offers you the opportunity to develop specialist knowledge, understanding and skills, as well as broaden your career prospects in the education sector, all while continuing the work role you love.

FdA, 2 years, full-time

Typical entry requirements - you should have a minimum of one year's experience in a relevant, professional setting working directly with children, young people and/or adults with SEND, as well as a relevant Level 2 Qualification. You will need to undertake a minimum of 12 hours per week in a relevant work setting for the duration of the programme.

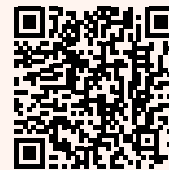
Why study this course?

- Increase your knowledge and understanding of the complex relationships which exist surrounding those with special educational needs and disabilities
- Graduates of this degree may progress to an undergraduate degree by further study and post graduate opportunities such as initial teacher training

Courses available

- **FdA Professional Practice in Special Educational Needs & Disability (Grantham College)**

lincolnbishop.ac.uk/fdasendprac



This course will be delivered
at Grantham College.

Early Childhood Education in Practice (Grantham College)

Have you ever thought about working towards a degree, but decided against it as you don't want to give up your current employment or volunteering? This course is designed for those working or volunteering with children 0-8 years in the voluntary, private, and independent early years sector or a foundation unit in a school. This course is also for nannies, child minders and those working in children's centres with families of young children.

FdA, 2 years, full-time

Typical entry requirements – a minimum of one year's experience in practice with a minimum of two days a week (minimum of 12 hours per week accumulating to 360 hours per year of study in a relevant role.) Typically a Level 3 Diploma, NVQs, access to HE programmes, subject/vocational qualifications and minimum Level 2 Functional skills or equivalent in Maths and English.

Why study this course?

- Earn while you learn on this work-based programme
- Graduates of this course have taken on higher level roles specialising in areas such as family liaison, special education needs, managing settings youth work, mentoring or roles in the wider community and with local authorities

Courses available

- **FdA Early Childhood Education in Practice (Grantham College)**

lincolnbishop.ac.uk/fdaecg



This course will be delivered
at Grantham College.

Education in Practice (Grantham College)

This work-based Foundation Degree programme is a combination of practice-based learning and campus-based teaching sessions that take place once a week, allowing you to continue working or volunteering throughout the course. Throughout the two-year programme, you will integrate your previous experience of working with children into your studies.

FdA, 2 years, full-time

Typical entry requirements – a minimum of one year's experience in practice with a minimum of two days a week (minimum of 12 hours per week accumulating to 360 hours per year of study in a relevant role), Typically a Level 3 Diploma, NVQs, access to HE programmes, subject/vocational qualifications; an agreed minimum of 12 hours per week in a relevant work setting for the duration of the programme.

Why study this course?

- Graduate opportunities have enabled our students to attain higher level positions within their sector, including areas such as special educational needs, mentoring, subject support, school, family, and welfare liaison roles
- This course is often seen as a step towards becoming a teacher, with many graduates pursuing further study through our PGCE routes, or gaining a professional status

Courses available

- **FdA Education in Practice (Grantham College)**

lincolnbishop.ac.uk/fdaedg

Top Up Degrees

Our Top Up Degrees have been designed to provide you with a progression route from our Foundation Degrees to a degree with honours.

Usually lasting for just a year, they will give you the chance to build upon the knowledge gained during your foundation degree study and emerge with a full BA Honours degree.

Most of our top up degree students have already studied for a foundation degree with us, but certain foundation degrees offered by other institutions may also be recognised as suitable entry qualifications (our Admissions team will be able to advise you further).

Like with our foundation degrees, you will normally spend one afternoon and evening a week at Lincoln Bishop, allowing you plenty of time to continue in relevant paid or voluntary roles.

lincolnbishop.ac.uk/topups



Primary Teaching Studies with QTS

Are you a teaching assistant currently working in a primary school, or working in an equivalent educational setting? If you've recently completed a relevant Foundation Degree (FdA) and are looking to pursue a career in primary teaching, then this course could be the perfect next step for you. This course is a stimulating and challenging top up degree at honours level, developing the qualities required in 21st century teachers.

BA (Hons), 16 months, full-time blended

Typical entry requirements – you will normally have completed a Level 5 qualification, and possess GCSEs in English, Mathematics and Science at grade 4 (previously C) or above (or equivalent). Foundation degrees obtained at other institutions will be considered based on their suitability. Applicants are expected to be working as TA for a minimum of two days per week and have written support from their school. At least two years' experience is desirable.

Why study this course?

- Gain Qualified Teacher Status (QTS) while continuing to work as a Teaching Assistant
- Build on knowledge gained on your Foundation Degree, and the experience you have from your work in primary schools

Courses available

- **BA (Hons) Primary Teaching Studies with QTS**

lincolnbishop.ac.uk/ptsqts

Open Days

Get to know our campus and surroundings on an Open Day
lincolnbishop.ac.uk/opendays



Early Childhood Education

This course is designed to be studied alongside your career working with young children. The one-year course is a combination of practice-based learning and campus-based teaching sessions that take place once a week, allowing you to continue working or volunteering throughout the course. Drawing on your foundation degree knowledge, this course aims to challenge and expand your understanding of how to support children by exploring alternative and international perspectives on child development.

BA (Hons), 1 year, full time blended

Typical entry requirements – you will normally have 240 HE credits from a Foundation degree or a HE Diploma in a relevant field of study. You are expected to have a current (or prospective) voluntary or paid employment in a relevant setting for a minimum of 12 hours per week of study throughout the course. Typically, applicants are expected to have three years of experience in a voluntary or paid role working with children.

Why study this course?

- Earn while you learn on this work-based programme
- Blended learning delivery, small number of days on campus and remote face to face sessions

Courses available

- **BA (Hons) Early Childhood Education**
- **FdA Early Childhood Education**

lincolnbishop.ac.uk/baecep



Childhood Youth & Families in Practice

Are you ready to take your career in childhood, youth, and family services to the next level? Our BA (Hons) work-based degree programme is tailored for individuals who have already completed a related Foundation Degree or Higher Education Diploma in Childhood, Youth, and Families. This unique programme seamlessly integrates practice-based learning with weekly campus-based teaching sessions, ensuring you can continue your work or volunteer commitments.

BA (Hons), 1 years, full time blended

Typical entry requirements – you will normally have 240 HE credits from a Foundation degree or a HE Diploma in a relevant field of study. You are expected to have a current (or prospective) voluntary or paid employment in a relevant setting for a minimum of 12 hours per week of study throughout the course. Typically, applicants are expected to have three years of experience in a voluntary or paid role working with children.

Why study this course?

- Blended learning delivery, small number of days on campus and remote face to face sessions
- Continue working or volunteering while pursuing your degree, providing valuable practical experience alongside your academic studies

Courses available

- **BA (Hons) Childhood Youth & Families in Practice**

lincolnbishop.ac.uk/bacyfp



Early Childhood Education in Practice (Graduate Practitioner)

Are you passionate about early childhood education and ready to take the next step in your academic and professional growth? This work-based degree programme is the perfect opportunity for individuals who have already completed a suitable Foundation Degree or Higher Education Diploma in Early Childhood. This programme seamlessly blends practice-based learning with campus-based teaching sessions that take place once a week, ensuring you can maintain your current work or volunteer commitments.

BA (Hons), 1 year, full-time

Typical entry requirements – you will normally have 240 HE credits from a Foundation degree or a HE Diploma in a relevant field of study. You are expected to have a current (or prospective) role in a relevant setting for a minimum of 12 hours per week of study throughout the course. Typically, applicants are expected to have three years of experience in a voluntary or paid role working with children.

Why study this course?

- Continue working or volunteering while pursuing your degree, providing you with valuable practical experience alongside your academic studies
- Study with support from a research-active team, ensuring you receive the latest insights and developments in the field.

Courses available

- **Early Childhood Education in Practice (Graduate Practitioner)**

lincolnbishop.ac.uk/baecegp

“
If you’re looking for a community that recognises all its members as equal and provides the best facilities and teaching for its students, then this Lincoln Bishop the place for you.

Moses
MA in Education with TESOL



Teaching & Learning

This course is designed for practitioners working in a range of settings that support learning, including Early Years Foundation Stage classes, primary and secondary education, further and adult education. Throughout the one-year programme, you will build on your previous study and professional experience to develop a deeper understanding of current issues, practice, and practitioner research in teaching and learning. The modules will encourage you to critically reflect on your own practice, analyse key systems and policies, and explore professional challenges through topics such as leadership, contemporary social and political issues, and critical approaches to pedagogy.

BA (Hons), 1 year, full-time

Typical entry requirements – you will normally have 240 HE credits from a Foundation degree or a HE Diploma in a relevant field of study. You are expected to have a current (or prospective) role in a relevant setting for a minimum of 12 hours per week of study throughout the course. Typically, applicants are expected to have three years of experience in a voluntary or paid role working with children.

Why study this course?

- Earn while you learn on this work-based programme
- Graduate opportunities have enabled students to attain managerial positions within their sector, to lead practice with their setting

Courses available

- **BA (Hons) Teaching & Learning**

lincolnbishop.ac.uk/bateachlearn



BA (Hons) Counselling Practitioner

This programme is theory and research-focused, designed primarily to provide a pathway for those who are typically already qualified as counsellors but wish to build upon their current level of training. The programme adopts a humanistic approach to counselling practice; the 'humanistic' label is an umbrella term for counselling approaches which are client-centred and fundamentally focused on the therapeutic relationship. Students will continue to show high level of self-awareness and, consequently, students will continue to embark upon a journey of personal development throughout the programme.

BA (Hons), 1 year, full-time blended

Typical entry requirements – you will normally have formal training in counselling and/or psychotherapy, with a minimum of 100 supervised client hours and membership of BACP or equivalent professional association with code of ethics.

Why study this course?

- The teaching team are experienced counsellors, many of whom have their own practices
- A blended learning approach enables you to study flexibly alongside the opportunity to attend in person sessions and network with other students

Courses available

- **BA (Hons) Counselling Practitioner**

lincolnbishop.ac.uk/counprac



BA (Hons) Professional Practice in SEND (distance learning)

This course is a distance learning programme delivered online and is an ideal top up degree if you are a graduate of an FdA Professional Practice in Special Educational Needs and Disability (or similar award) and have current and relevant experience of working within the sector. The course will equip you with a critical understanding of sociological, psychological and philosophical values that shape Special Educational Needs and Disability (SEND).

BA (Hons) 1 year (full-time), 2 years (part-time)

Typical entry requirements – you will normally have 240 HE credits from a Foundation degree or a HE Diploma in a relevant field of study. You are expected to have a current (or prospective) role in a relevant setting for a minimum of 12 hours per week of study throughout the course. Typically, applicants are expected to have two years of experience in a voluntary or paid role working with children.

Why study this course?

- Explore the different ways you can support the children you work with by developing your understanding of learning needs and barriers
- Study topics that are most relevant to your own setting by selecting from options in some modules and by designed research for your own setting

Courses available

- **BA (Hons) Professional Practice in SEND (distance learning)**

lincolnbishop.ac.uk/senddl

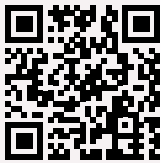
Undergraduate Degrees

Undergraduate degrees are defined as ‘first degrees’, which normally lead to a Bachelor of Arts (BA) or Bachelor of Science (BSc) qualification.

They are normally three years long and are designed to give you a thorough understanding of your chosen subject area.

At Lincoln Bishop, we offer a wide range of undergraduate degrees. These may be single honours (meaning you will study just one subject area), or joint honours (where two subjects are combined and studied together). This flexibility means that you can really tailor your degree to suit your needs and passions.

lincolnbishop.ac.uk/ug



Archaeology

Studying Archaeology is ideal if you’re fascinated by both the ancient and more recent past, or wish to explore and investigate the material remains of previous societies and cultures. It will allow you to get hands-on with the past and explore civilisations and people from throughout history, in a practical and interesting way. Lincoln is the perfect city in which to study Archaeology. With a 2,000 year history, from Roman foundations to industrial renaissance, you’ll be in the ideal position to discover both ancient and modern here at Lincoln Bishop.

BA (Hons), 3 years, full-time

Typical entry requirements are normally 96 UCAS tariff points, unless you qualify for a contextual offer – See page 96.

Why study this course?

- Get hands on - it's not just an academic course. You'll participate in fieldwork and gains skills in excavation, survey, processing and analysis of finds
- It will help you develop into a highly employable graduate. Professional archaeologists are in incredibly high demand both regionally and nationwide

Courses available

- **BA (Hons) Archaeology and History**

Our Archaeology and History degree is also available with a Foundation Year

lincolnbishop.ac.uk/archaeology

Open Days

Get to know our campus and surroundings on an Open Day
lincolnbishop.ac.uk/opendays



Business

Our Business courses provide you with a thorough grounding in a range of business subjects including marketing, finance, management, entrepreneurship and leadership. You'll also have the chance to work with a wide variety of organisations through our links with industry and the opportunity to develop projects and expertise in areas that you are interested in. They will equip you for both employment and self-employment and give you the confidence to succeed in the business world. Modules are contemporary in nature and tackle key issues facing organisations and society head on.

BA (Hons), 3 years, full-time

Typical entry requirements are normally 96 UCAS tariff points, unless you qualify for a contextual offer – See page 96.

Why study this course?

- Alongside a traditional degree, you'll have the chance to achieve a Chartered Management Institute (CMI) Diploma in Management Leadership
- All modules and sessions are taught by industry experts, who will prepare you for business that makes a positive impact on society

Courses available

- **BA (Hons) Business Management**
- **BA (Hons) Business with Finance**
- **BA (Hons) Business with Marketing**
- **BA (Hons) Business and Psychology**

All of our Business degrees are also available with a Foundation Year

lincolnbishop.ac.uk/business



Counselling Practitioner

This programme is aimed at students who wish to become Counselling practitioners. The degree adopts a humanistic approach to counselling practice with an emphasis on embedding knowledge of integrating elements of the major theoretical approaches and counselling methodologies. You will develop theoretical knowledge, counselling skills and experience, self-awareness, emotional intelligence, research skills and critical awareness. Students will be introduced to the relevance and practical application of knowledge and counselling skills through practical learning, placement and research opportunities.

BA (Hons) 3 years, full-time

Typical entry requirements are normally 96 UCAS tariff points, unless you qualify for a contextual offer – See page 96. You will also need a level 2 counselling qualification. For applicants who don't have a level 2 counselling qualification before starting the course you will be asked to attend a one day interview and skills assessment day.

Why study this course?

- Students' personal development is supported during the course with weekly process groups facilitated by counselling practitioners
- The teaching team are experienced counsellors, many of whom have their own practices

Courses available

- **BA (Hons) Counselling Practitioner**

lincolnbishop.ac.uk/counsellingprac

Find out more

Get your questions answered by our expert Course Enquiries team: courseenquiries@lincolnbishop.ac.uk



Criminology

Our criminology degree will be of interest to those who are passionate and curious to learn about crime, criminal behaviour and punishment. Each of the modules on this course are designed to inform, challenge, and inspire you. You will be deliberating on the effects of media on crime, addressing the political and social responses to crime, and examining crime from a victim's perspective. You will also be exploring the influence of gender on crime, questioning the role and purpose of punishment, and reflecting on transnational crimes such as body, arms and human trafficking, money laundering and cyber-crime. Through this degree, you will have the opportunity to become a knowledgeable, critical, and confident criminologist of the future.

BA (Hons), 3 years, full-time

Typical entry requirements are normally 96 UCAS tariff points, unless you qualify for a contextual offer – See page 96.

Why study this course?

- Engaging, applicable and enlightening subjects will be delivered over the course of the programme by experienced and knowledgeable tutors
- You will work in a supportive learning environment studying classic and contemporary Criminology modules

Courses available

- **BA (Hons) Criminology**

Our Criminology degree is also available with a Foundation Year

lincolnbishop.ac.uk/criminology



Early Childhood Studies

Early Childhood Studies will introduce you to aspects of education, health, and social care, with a specific focus on children from 0–8 years of age. It offers graduates a range of employability opportunities with module content, supporting you in developing a wide range of transferable skills, as well as providing a curriculum which enables you to develop your academic skills. When you graduate from the programme you will be awarded a full and relevant degree, enhancing employability by enabling you to seek roles in early childhood settings as part of the adult: child ratio. Furthermore, you may also choose to work towards an award which embeds graduate practitioner competencies into your study.

BA (Hons), 3 years, full-time

Typical entry requirements are normally 96 UCAS tariff points, as well as GCSEs in English Language and Mathematics at grade 4 (previously C) or above (or equivalent), unless you qualify for a contextual offer – See page 96.

Why study this course?

- If you've always wanted to work with young children (ages 0-8) but are unsure of your career pathway then this course is ideal for you
- Studying this course gives you access to a free pre-teaching course and guaranteed interview for PGCE if you're interested in going into teaching

Courses available

- **BA (Hons) Early Childhood Studies**
- **BA (Hons) Psychology and Early Childhood Studies**
- **BA (Hons) SENDI and Early Childhood Studies**

All of our Early Childhood Studies degrees are also available with a Foundation Year

lincolnbishop.ac.uk/ecs



Education Studies

How do people learn? What gets in the way of learning? Where might people learn best – and how? Do we need schools? Is it possible to 'school' the world? Can education make a difference to human rights? Women's rights? Nationally? Globally? These are just some of the big questions that you will examine through studying Education Studies at Lincoln Bishop. We are proud of our highly contemporary, reactive and issues-based course that has been carefully designed to give you that 'bigger' picture of education in a global society.

BA (Hons), 3 years, full-time

Typical entry requirements are normally 96 UCAS tariff points, unless you qualify for a contextual offer – See page 96.

Why study this course?

- Studying this course gives you access to a free pre-teaching course and guaranteed interview for PGCE if you're interested in going into teaching
- This is a highly practical degree, teamed with the theory you will need to succeed. Gain up to 9 weeks of experience within work-based placements

Courses available

- **BBA (Hons) Education Studies**
- **BA (Hons) Education Studies and English**
- **BA (Hons) Education Studies and History**
- **BA (Hons) Education Studies and Sociology**
- **BA (Hons) Education Studies and SENDI**
- **BA (Hons) Education Studies and Sport**
- **BA (Hons) Education Studies and Theology, Philosophy & Ethics**
- **BA (Hons) Psychology and Education Studies**
- **BA (Hons) Education Studies and TESOL**

Most of our Education Studies degrees are also available with a Foundation Year

lincolnbishop.ac.uk/edstudies



English

Studying English at Lincoln Bishop provides an exciting and wide-ranging engagement with the power of human creativity and the rich heritage of literary expression. On this course you will study great works of literature from Ovid to Ali Smith, Shakespeare to Bernardine Evaristo, Salman Rushdie, and Chimamanda Ngozi Adichie. Enrich your learning with explorations into creative and environmental writing, detective fiction, world literature, drama, children's literature, film, Victorian, Romantic, and contemporary literature.

BA (Hons), 3 years, full-time

Typical entry requirements are normally 96 UCAS tariff points, unless you qualify for a contextual offer – See page 96.

Why study this course?

- Our vibrant courses embrace the full breath of literary forms, genres, and periods
- English at Lincoln Bishop was ranked 2nd in the UK for Teaching (NSS 2023) which is reflected in our dedicated teaching team, personalised support and tailored feedback

Courses available

- **BA (Hons) English Literature**
- **BA (Hons) Education Studies and English**
- **BA (Hons) English and History**
- **BA (Hons) English and Psychology**
- **BA (Hons) English Literature and TESOL**

Most of our English degrees are also available with a Foundation Year

lincolnbishop.ac.uk/english



English Language & Teaching

English Language & Teaching explores English's evolution and language acquisition theories while developing practical teaching skills. You'll study English's global transformation and debate how we learn languages, applying theory to classroom practice through effective teaching methodologies and materials development. The single honours program deepens your understanding of linguistics, exploring language's relationship to society, identity, and communication. You'll study topics from multilingualism to clinical linguistics, developing analytical skills applicable to various texts and discourse. These skills prepare you for careers in linguistics, education, language teaching, and creative industries requiring strong English language expertise.

BA (Hons), 3 years, full-time

Typical entry requirements are normally 96 UCAS tariff points, unless you qualify for a contextual offer – See page 96.

Why study this course?

- Excellent opportunities to develop your practice of English language teaching in settings in the UK and the rest of the world
- Ideal if you are looking to develop your skills to support multilingual EAL learners in classrooms en-route to PGCE Primary or Secondary (English) qualifications

Courses available

- **BA (Hons) English Language & Teaching**

lincolnbishop.ac.uk/elt



Health & Social Care

Health & Social Care is all about compassion, support and understanding both individual needs and broader sociocultural context. Here at Lincoln Bishop University, we practice what we teach. Our undergraduate course has been developed in consultation with Health and Social Care services in Lincoln, ensuring relevance to provision within the community and meeting employers' expectations. The course focuses on contemporary health and social care provision and considers how we can learn from the past and the present to improve the future for those using health and social care services.

BSc (Hons), 3 years, full-time

Typical entry requirements are normally 96 UCAS tariff points, unless you qualify for a contextual offer – See page 96.

Why study this course?

- The course provides you with excellent employability skills and experience, as you will meet and work closely with employers
- You'll have the opportunity to experience a unique and wide range of placements within a variety of settings across the sector

Courses available

- **BSc (Hons) Health & Social Care**

Our Health & Social Care degree is also available with a Foundation Year

lincolnbishop.ac.uk/heas

Open Days

Get to know our campus and surroundings on an Open Day
lincolnbishop.ac.uk/opendays



Health & Wellbeing in Early Childhood

Health and Wellbeing at Lincoln Bishop supports a wide range of career opportunities if you want to work with young children. This programme provides understanding of the crucial 0-8 developmental stage, individual needs and the broader sociocultural context of young children and their families. You will explore personal, professional, and ethical values within health and social care practice with young children and their families. The programme supports those who aspire to become, for example, early help workers attached to Children's Centres, family health workers; maternity healthcare support workers or midwifery assistants, child mental health support workers.

BA (Hons), 3 years, full-time

Typical entry requirements are normally 96 UCAS tariff points, unless you qualify for a contextual offer – See page 96.

Why study this course?

- Placements in a relevant work setting are offered at each level of study, providing hands-on experience
- This course is highly current in the workplace and is mapped to key national health and wellbeing agendas

Courses available

- **BA (Hons) Health & Wellbeing in Early Childhood**

Our Health and Wellbeing degree is also available with a Foundation Year

lincolnbishop.ac.uk/hw



History

While studying a History course at Lincoln Bishop, you will explore a range of fascinating topics spanning a number of historical eras, in a variety of local, national and global contexts; from pirates in the early modern Atlantic World to civil rights campaigners in the 1960s. As well as learning about the people in the past on this undergraduate degree, you will investigate how people today engage with history and consider how the past can be brought alive. Here at Lincoln Bishop you are encouraged to study the past with empathy and see history from different, sometimes challenging perspectives.

BA (Hons), 3 years, full-time

Typical entry requirements are normally 96 UCAS tariff points, unless you qualify for a contextual offer – See page 96.

Why study this course?

- Small class sizes and an intimate campus sat in the heart of historic Lincoln enable you to find your individual voice as a historian
- This course will utilise long-established, experienced contacts to take you beyond the classroom on educational visits and work placements, within Lincoln and further afield

Courses available

- **BA (Hons) History**
- **BA (Hons) Military History**
- **BA (Hons) Archaeology and History**
- **BA (Hons) Education Studies and History**
- **BA (Hons) English and History**
- **BA (Hons) History and Theology, Philosophy & Ethics**

All of our History degrees are also available with a Foundation Year

lincolnbishop.ac.uk/history



Military History

This exciting course reviews the evidence for conflict from the medieval period through to the present day across a breadth of geographical situations. Armed conflict has shaped states, societies and economies since ancient times through to the modern times. The study of military history is a fascinating topic and includes much more than learning just about weapons and battles. Taking this course will help you to develop an understanding of the wider social, ethical and political contexts of warfare.

BA (Hons), 3 years, full-time

Typical entry requirements are normally 96 UCAS tariff points, unless you qualify for a contextual offer – See page 96.

Why study this course?

- Lincolnshire is known as 'Bomber County' for its RAF heritage and role during the Second World War, making it a perfect and unique place to study Military History
- You will be inspired by research-active lecturers within the classroom and beyond by learning about Military History on location at a range of historic military sites

Courses available

- **BA (Hons) Military History**

Our Military History degree is also available with a Foundation Year

lincolnbishop.ac.uk/milihis



Primary Education with QTS

Have you been taught by someone who has truly inspired you? This course will provide you with an integrated academic and professional preparation for teaching, leading to Qualified Teacher Status. You'll spend a significant amount of time in school throughout the course and will be supported as you learn to develop effective ways to teach the whole primary curriculum. You will explore the theory and practice of primary education and develop a personal philosophy that will underpin your future career. If you believe that you can inspire children to learn and are passionate about the role that primary education plays in shaping a child's future, then this is the course for you.

BA (Hons), 3 years, full-time

Typical entry requirements are normally 112 UCAS tariff points, as well as GCSEs in English Language, Mathematics and Science at grade 4 (previously C) or above (or equivalent), unless you qualify for a contextual offer – See page 96.

Why study this course?

- We have over 160 years of experience in teacher education, a long-standing national reputation within the field, and small teaching groups with a range of expert leaders
- Our strong school partnerships will empower you to gain valuable hands-on experience during school placements; we ensure you have more days in school than are currently required by the DfE

Courses available

- **BA (Hons) Primary Education with QTS**

lincolnbishop.ac.uk/primed



Psychology

Do you ever wonder why we behave as we do? How do gangs, teams and friendship groups form? Do you wonder if smiling really does make you feel more positive? Do you often venture into the bigger questions about life and who we are? As well as classic psychological theories and research, you'll be debating social issues, studying specific mental processes, such as memory, language and attention, as well as broader issues and theories – both historical and contemporary. You will also develop your skills in problem-solving, data analysis, predict and reasoning, with a focus on applying your knowledge and theory to real-life.

BA/BSc (Hons), 3 years, full-time

Typical entry requirements are normally 96 UCAS tariff points, as well as GCSEs in English Language and Mathematics at grade 4 (previously C) or above (or equivalent), unless you qualify for a contextual offer – See page 96.

Why study this course?

- Learn about the range of core psychological domains and methods, accredited by the British Psychological Society (BPS)
- Learn about and engage with on-site research projects, exploring contemporary issues such as mindfulness, psychopathy and the science of dreaming

Courses available

- **BA (Hons) Psychology**
- **BA (Hons) Psychology and Business**
- **BA (Hons) Psychology and Counselling**
- **BA (Hons) Psychology and Early Childhood Studies**
- **BA (Hons) Psychology and Education Studies**
- **BA (Hons) Psychology and English**
- **BA (Hons) Psychology and Sociology**
- **BA (Hons) Psychology and SENDI**
- **BA (Hons) Psychology and Sport**

All of our Psychology degrees are also available with a Foundation Year

lincolnbishop.ac.uk/psychology



Sociology

Sociology provides a comprehensive and exciting introduction to the study of all aspects of the social world. You won't 'just' be studying sociological theory – you'll be exploring the ways theories help demystify phenomena like terrorism, nationalism, sexism, surveillance, globalisation and multiculturalism. Similarly, you won't 'just' be studying research methods – you'll be looking at how those methods are used by marketing agencies, governments, advertising agencies, PR companies and many others. Along the way, you'll see how sociological thinking is crucial for people who want to understand the world around them, whether as students, employees or citizens.

BA (Hons), 3 years, full-time

Typical entry requirements are normally 96 UCAS tariff points, unless you qualify for a contextual offer – See page 96.

Why study this course?

- Gain a broad set of skills by combining sociology theory with research skills and practical applications
- Benefit from cutting-edge research and theoretical perspectives that will help you challenge dominant understandings of society

Courses available

- **BA (Hons) Sociology**
- **BA (Hons) Education Studies and Sociology**
- **BA (Hons) Psychology and Sociology**
- **BA (Hons) SENDI and Sociology**
- **BA (Hons) Sociology and Sport**

Most of our Sociology degrees are also available with a Foundation Year

lincolnbishop.ac.uk/sociology



Special Educational Needs, Disability & Inclusion

This course equips you with a critical understanding of sociological, psychological, and philosophical values that shape Special Educational Needs, Disability and Inclusion (SENDI). Throughout your study, you will examine theoretical arguments in relation to opportunities and challenges for different groups in society, as well as different categories of need including; cognition and learning, social, emotional and mental health, sensory and communication needs. You will explore policy and practice, in various educational, cultural and social settings, promoting appreciation for the need for inclusive, relevant and ever-changing strategies to meet diverse learning needs. You will challenge your own beliefs and values, as well as those of others, and become an advocate for change.

BA (Hons), 3 years, full-time

Typical entry requirements are normally 96 UCAS tariff points, unless you qualify for a contextual offer – See page 96.

Why study this course?

- Explore how categories of need are created through divisions within social and educational systems and learn to challenge these inequalities
- The course is inclusive in all aspects of delivery, providing you with opportunities to have your say, to make and be the difference

Courses available

- **BA (Hons) SENDI**
- **BA (Hons) Education Studies and SENDI**
- **BA (Hons) Psychology and SENDI**
- **BA (Hons) SENDI and Early Childhood Studies**
- **BA (Hons) SENDI and Sociology**
- **BA (Hons) SENDI and Sport**
- **BA (Hons) SENDI and Theology, Philosophy & Ethics**

Most of our SENDI degrees are also available with a Foundation Year

lincolnbishop.ac.uk/sendi



Sport

Sports coaches and physical educators have the opportunity to impact significantly on the lives of those they are supporting and this requires thoughtful, innovative and informed practitioners which this programme aims to develop. During the study of Sport at Lincoln Bishop you will gain understanding in the complexities of this subject, including; the development of sport; how performance can be enhanced and how it can be managed and led. As your course progresses, you can choose to specialise in a particular area, giving you as much freedom as possible to explore your personal interests.

BA/BSc (Hons), 3 years, full-time

Typical entry requirements are normally 96 UCAS tariff points, unless you qualify for a contextual offer – See page 96.

Why study this course?

- We have extensive links with external partners and opportunities for work experience, volunteering and coaching
- Enjoy small and personal classes, practical and lab-based sessions across all levels of the programme

Courses available

- **BA (Hons) Education Studies and Sport**
- **BA (Hons) Psychology and Sport**
- **BA (Hons) Sociology and Sport**
- **BA (Hons) SENDI and Sport**
- **BSc (Hons) Sport, Coaching and Physical Education**

Most of our Sport degrees are also available with a Foundation Year

lincolnbishop.ac.uk/sport



Theology, Philosophy & Ethics

Whether you describe yourself as agnostic, atheist or a firm believer; if you have a passionate interest in the ethical, political, philosophical and religious issues of our time, this course is perfect for you. Here at Lincoln Bishop we can look back on many years of experience in teaching Religious Studies, Philosophy and Theology. We designed this undergraduate degree to bring the oldest of academic subjects into the present day – combining the richness of ancient tradition with the relevance and freshness of a 21st century subject. This hands-on undergraduate degree will take you beyond the classroom and will open doors that have the potential to change your life and empower you to make a difference to the world you inhabit.

BA (Hons), 3 years, full-time

Typical entry requirements are normally 96 UCAS tariff points, unless you qualify for a contextual offer – See page 96.

Why study this course?

- This is a forward-thinking and issue-led degree which offers you the opportunity to address and debate difficult and sometimes controversial moral, ethical and philosophical issues of our time
- Choose your approach to study - undertake a fact-based and objective approach or an approach that allows you to explore a personal faith

Courses available

- **BA (Hons) Theology, Philosophy & Ethics**
- **BA (Hons) Education Studies and Theology, Philosophy & Ethics**
- **BA (Hons) History and Theology, Philosophy & Ethics**
- **BA (Hons) SENDI and Theology, Philosophy & Ethics**

All of our Theology, Philosophy & Ethics degrees are also available with a Foundation Year

lincolnbishop.ac.uk/theology

Foundation Year Courses

Most of our undergraduate courses offer the option to include a foundation year with your studies, meaning that you will study over four years rather than the traditional three.

Beginning your degree with a foundation year allows you to learn all the essential skills of higher education study before you specialise in your chosen subject area. The programme incorporates extensive opportunities for one-to-one, personalised support to ensure you feel confident to transition into your full degree programme.

If you don't have the traditional entry requirements, or don't think you will attain the required tariff points, for direct entry to undergraduate study at Lincoln Bishop, our foundation year programme can enable you to study your chosen degree without any UCAS points. This makes it an ideal option if you are returning to education after a break or if you feel that you would benefit from a more supported and graduated introduction to being a university student.

lincolnbishop.ac.uk/found



“

I like the range of topics that we cover. It's so broad – we do bits of history, philosophy and ethics, and the social side of things. I love the range of topics we cover and that we have choice in our assignments to study what we want. This means we can really range in on what we're interested in.

Chloe

Theology, Philosophy & Ethics

Routes into teaching

Teaching is a hugely rewarding and exciting career. We have over 160 years' experience in education and have developed a suite of courses allowing you to train to teach in a way that best suits you.

To become a qualified teacher you will need a bachelor's degree and Qualified Teacher Status (QTS). You can gain this through a degree that includes recommendation for QTS (e.g. Primary Education with QTS) or by studying for an undergraduate degree followed by a Postgraduate Certificate in Education (PGCE).

Take our brand new Routes into Teaching Quiz to discover the best path for you, based on your qualifications and experience.

lincolnbishop.ac.uk/questionnaire

“

Teaching was always something that I wanted to do, but wasn't sure if I had the confidence to do it and Lincoln Bishop gave me that confidence. It's an incredibly rewarding career. I wanted to go into teaching because I wanted to make a difference and feel that every day I'd achieved something that will help somebody.

Melissa
PGCE

Depending on your current level of education, your experience, and your personal circumstances, we can offer a number of different options for you to get into teaching:

If you don't already have a degree...

Our BA (Hons) Primary Education with QTS course is a three-year undergraduate route that leads to Qualified Teacher Status. It will prepare you both academically and professionally to work as a primary school teacher and is the perfect route if you don't already have an undergraduate degree.

If you're currently working in a school...

We have a few options if you want to combine your existing work with academic study. If you already have a degree, you might want to consider our flexible two-year PGCE Primary part-time blended route. If you don't yet have a degree, choose one of our Education in Practice foundation degrees followed by our Primary Teaching Studies with QTS top up degree.

If you already have an undergraduate degree...

A PGCE is one of the most popular routes for those who already have a degree. The course includes recommendation for QTS, and is available for primary teaching as well as a range of secondary subject specialisms. It can be studied on a full or part-time basis, and you will spend a substantial amount of time training in schools or other educational settings to prepare you for your future career.

If you are already a teacher but need QTS...

It may be that you are an experienced graduate with substantial classroom practice, but don't yet have Qualified Teacher Status. If this is the case, you can apply for an Assessment Only route to QTS. The normal duration for this route is three months, during which you will be assessed to verify that you are meeting the Teachers' Standards in practice.

If you'd like to teach and travel...

Our three-year BA (Hons) English Language & Teaching degree could be the perfect option for you if you want to teach and travel overseas. You'll gain a degree and an internationally recognised Teaching Certificate.*

If you'd like to teach post-16 or further education learners...

If a career teaching in the education, training and skills sector (such as within further education colleges, private sector training providers and offender education) suits you best, we offer the Level 5 Certificate in Education (Teaching Post-16 and Further Education) for non-graduate subject or vocational specialists, and the Professional Graduate Diploma in Education (Teaching Post-16 and Further Education) for graduates. Both lead to a robust teaching qualification, which is recognised by the sector.**

There are many different ways to get into teaching at Lincoln Bishop, whatever your situation.

* This course does not include QTS

** This course does not include QTS, but on completion you may apply for the professional status of Qualified Teacher Learning and Skills (QTLS)

Postgraduate Training Qualifications

Here at Lincoln Bishop we're incredibly proud of our long and established history of teacher training.

So it will come as no surprise to you that we offer a wide variety of postgraduate routes that allow you to fulfil your ambitions of becoming a teacher.

Our PGCE courses are the most common, offering you an integrated academic and professional preparation for teaching at primary and secondary levels.

All routes include substantial time spent training in schools, colleges or other settings, along with time spent in sessions at Lincoln Bishop. We also have an ever-growing selection of postgraduate courses at a variety of levels in other areas.

lincolnbishop.ac.uk/postgradteach



PGCE Primary (Full-time)

Our PGCE Primary course prepares you to teach children in either the 3 to 7 or 5 to 11 age ranges. It is a very practical course with around two thirds of the time spent on placement in schools or Early Years settings, and around one third spent engaging in partnership training with the university. It provides you with the skills to teach in your chosen age range, combining study at either postgraduate or professional level alongside practical training to enable you to meet the Teachers' Standards by the end of the course. The course is based around the Initial Teacher Training Core Content Framework to ensure you are well-prepared to teach during your placements and to prepare you for your future career in the classroom.

PGCE, 1 year, full-time

Typical entry requirements - 2:2 degree classification and GCSEs in English, Mathematics and Science at grade 4 (previously C) or above (or equivalent). We advise you gain some experience in school, but it is not a requirement for an application or interview.

Why study this course?

- Our highly respected PGCE primary course is designed with more than 120 days spent on placement
- Placements are across at least two different schools and/or settings, which will enable you to make links between theory and practice

Courses available

- PGCE Primary (3-7)
- PGCE Primary (5-11)

lincolnbishop.ac.uk/postgradteach



PGCE Primary (Part-time)

Our Primary PGCE part-time blended route is a two-year course, that provides you with the skills to teach your chosen age range and includes more than 120 days in a school or setting. The course provides you with the flexibility to study to become a teacher around work or life commitments, with around 6 days per academic year spent on campus attending taught sessions such as workshops and seminars. The blended approach means that the remainder of the taught content will be delivered through a mix of synchronous and asynchronous online sessions, as well as independent study.

PGCE, 2 years, part-time

Typical entry requirements - 2:2 degree classification and GCSEs in English, Mathematics and Science at grade 4 (previously C) or above (or equivalent). We advise you gain some experience in school, but it is not a requirement for an application or interview.

Why study this course?

- Gain Qualified Teacher Status (QTS) in a more flexible way on a route that supports trainees with other life or work commitments
- Lincoln Bishop has over 160 years of experience in education and upholds an excellent and long-standing national reputation within the field

Courses available

- PGCE Primary (3-7)
- PGCE Primary (5-11)

lincolnbishop.ac.uk/postgradteach

Open Days

Get to know our campus and surroundings on an Open Day
lincolnbishop.ac.uk/opendays



PGCE Secondary

Our range of PGCE Secondary courses prepare you to teach your specialist subject in either the 11 to 16 (with post-16 enhancement) or 14 to 19 age ranges. They are very practical courses with around two thirds of your time spent in schools, mostly working with teachers and pupils, and around one third spent on directed study, with partnership training in the University and school. It is an integrated academic and professional preparation for teaching, combining study at either postgraduate or professional level with practical training to meet the Teachers' Standards by the end of the programme.

PGCE, 1 year (full-time), 2 years (part-time, where applicable)

Typical entry requirements – a relevant honours degree at 2:2 classification or above, and GCSEs in English and Mathematics at grade 4 (previously C) or above (or equivalent). We advise you gain some experience in school, but it is not a requirement for an application or interview.

Why study this course?

- You will be taught and mentored by passionate, experienced, and highly-qualified subject experts. 100% of our trainees in 2023 said they were well-supported to teach their specialist subject
- The course is very hands on. You will study theories of learning and put these into practice in your subject, in the classroom with pupils

Courses available

- PGCE Secondary (Art & Design)
- PGCE Secondary (Business Studies)
- PGCE Secondary (Computing)
- PGCE Secondary (Dance)
- PGCE Secondary (Design & Technology)
- PGCE Secondary (Drama)
- PGCE Secondary (English)
- PGCE Secondary (Geography)
- PGCE Secondary (History)
- PGCE Secondary (Mathematics)
- PGCE Secondary (Modern Foreign Languages - French, German & Spanish)
- PGCE Secondary (Music)
- PGCE Secondary (Physical Education)
- PGCE Secondary (Physical Education with EBacc subject)
- PGCE Secondary (Science with Biology)
- PGCE Secondary (Science with Chemistry)
- PGCE Secondary (Science with Physics)
- PGCE Secondary (Social Science)

The PCCE Secondary courses above may be available to study part-time.

lincolnbishop.ac.uk/postgradteach



iPGCE

The International Postgraduate Certificate in Education (iPGCE) is an online distance learning programme tailored to those looking to gain a recognised qualification from a UK university with a strong reputation in education and teacher development. Studying for the iPGCE is fully online and designed for students who are already undertaking teaching work in international settings, or who wish to do so in the future. During the course, you will gain valuable insight to inform your own professional development, bringing together theory and practice.

PGCE, 1 year, part-time

Typical entry requirements - 2:2 degree classification (or equivalent). IELTS 6.5 is required, with a minimum of 6 in each component. Students must be working or volunteering in an education, teaching or training role (minimum 10 hours per week) for the duration of the course.

Why study this course?

- Gain a recognised qualification from a UK university with a strong reputation in teacher education
- Fully distance learning, so you can study from anywhere in the world at a time to suit you

Courses available

- iPGCE

lincolnbishop.ac.uk/postgradteach

Find out more

Get your questions answered by our expert Course Enquiries team:
courseenquiries@lincolnbishop.ac.uk



Assessment only Route to QTS (Primary & Secondary)

This is an assessment only route to Qualified Teacher Status (QTS), appropriate for very experienced graduates who have more than two years' successful teaching experience in two or more schools, colleges or settings. Candidates will be able to demonstrate that they are already meeting the Teachers' Standards, without further training, before the commencement of the Assessment Only process. The normal duration of the route will be three months, during which candidates will be required to demonstrate that they are meeting the Teachers' Standards in practice through evidence collected from direct lesson observation and a portfolio of evidence.

Typical entry requirements - you will need to have obtained or be predicted to obtain, an undergraduate honours degree in a relevant subject (or equivalent).

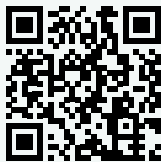
Why study this course?

- Lincoln Bishop has almost 160 years of experience in education and upholds an excellent and long-standing national reputation within the field
- This route allows you to gain QTS without having to take a full teacher training programme

Courses available

- **Assessment-only Route to QTS (Primary and Secondary)**

lincolnbishop.ac.uk/postgradteach



The course features three specialist routes of Academic (for those wishing to teach A Levels), Vocational and Special Education Needs and Disabilities (SEND)

Certificate in Education (Teaching Post-16 and Further Education)

The Level 5 Certificate in Education (Teaching Post-16 and Further Education) is for those who wish to teach in the education, training and skills sector, such as further education colleges, private sector training providers and offender education. It leads to a robust teaching qualification, which is recognised by the sector. The course will develop your understanding of the theory and practice of teaching, learning and assessment, and teachers' wider, professional engagement in the sector. It offers a challenging, supportive and rewarding experience to promote informed, reflective and effective teaching and professional development.

Level 5 certificate, 1 year (full-time), 2 years (part-time where applicable)

Typical entry requirements - a minimum of a Level 3 qualification in the subject you intend to teach, and GCSEs in English and Mathematics at grade 4 (previously C) or above (or equivalent). Students must have access to a minimum of 150 hours of teaching over the duration of the programme.

Please note that the part-time route is only available for those currently in employment in the sector.

Why study this course?

- The programme is open to non-graduates who have extensive industry experience and are looking to teach in their vocational specialist field
- We use the best and most current research and professional practice alongside feedback from our students to make sure module content is relevant to your future career or further studies

Courses available

- **Certificate in Education (Teaching Post-16 and Further Education)**

lincolnbishop.ac.uk/edcert



The course features three specialist routes of Academic (for those wishing to teach A Levels), Vocational and Special Education Needs and Disabilities (SEND)

Professional Graduate Diploma in Education (Teaching Post-16 and Further Education)

The Professional Graduate Diploma in Education (Teaching Post-16 and Further Education) is for graduates who are practising or aspiring teachers in the education, training and skills sector, such as further education colleges, private sector training providers and offender education. It will develop your knowledge and understanding of the theory and practice of teaching, learning and assessment, and teachers' wider, professional engagement in the sector. It offers a challenging, supportive and rewarding experience to promote informed, reflective and effective teaching and professional development.

PGDE, 1 year (full-time), 2 years (part-time, where applicable)

Typical entry requirements - a bachelor's degree, a minimum of a Level 3 qualification in the subject you intend to teach and GCSEs in English and Mathematics at grade 4 (previously C) or above (or equivalent). Students must have access to a minimum of 150 hours of teaching over the duration of the programme.

Please note that the part-time route is only available for those currently in employment in the sector.

Why study this course?

- Pre-service bursaries are available in selected subjects for up to £26,000
- Trainees who complete the course will be eligible to apply for Qualified Teacher Training and Skills (QTLS) with the Society for Education and Training. This is equivalent to QTS and is suitable for those who may consider teaching post-14 learners in the schools sector

Courses available

- **Professional Graduate Diploma in Education (Teaching Post-16 and Further Education)**

lincolnbishop.ac.uk/pgde

“

The best thing about being a student here is that I'm just really happy and content. I don't know if there is a particular reason for that, but I am just really happy here. It's the Lincoln Bishop effect.”

Hannah
Theology

Master's Degrees

Our master's degree courses are designed to build upon your undergraduate study and fully enhance your subject knowledge in specific areas.

They are a popular postgraduate qualification designed for if you want to carry on your studies after completing a Bachelor's degree, or learn even more about a particular subject.

Our long-running master's degree courses have recently been joined by a broad selection of new subject areas, giving you a wider selection of master's courses to choose from than ever before.

lincolnbishop.ac.uk/masters



Master of Business Administration (Strategic Leadership)

Develop your strategic leadership skills, enhance your knowledge, hone your management skills, boost your career aspirations, and grow your business. Whatever your motivation, this degree has you covered, placing your personal development and career aspirations at its core. There are new and emerging challenges in a complex world and leaders must be equipped to respond. This programme is designed to equip you with the knowledge and skills to embrace your role in leadership within ever-changing environments.

MBA, up to 2 years, part-time blended

Typical entry requirements - an honour's degree at 2:2 or above. Consideration will also be given to accepting students who can demonstrate relevant business, management and leadership experience and the ability and commitment to study at Master's level. Must demonstrate a minimum of 3 years of business and management experience.

Why study this course?

- Study to fit around your current role and commitments, offering a blended learning approach
- Mixture of in-person and online sessions with learning relevant to your role that are led by business practitioners

lincolnbishop.ac.uk/mbasl



MA Children's Literature & Literacies

This vibrant course gives you an opportunity to deepen your passion for literature written for children through research-led modules that engage with emerging frameworks and debates. Supported by a team of academic specialists, you will investigate theories of literacy development, and the learning and reading experiences of children and young people through interdisciplinary, inclusive, and current approaches. You will critically explore classic and contemporary publications across a range of genres from poetry, picture books and non-fiction to graphic novels and digital applications, aimed at readers from 0-18. You will examine the nature of literacy and literature in a digital age, their current existence, and future directions.

This MA will foster your academic capabilities and individual interests through conceptual and empirical research.

MA, 1 year (full-time)

Typical entry requirements - you must have obtained, or be predicted to obtain, an undergraduate honours degree with a minimum of lower second-class honours (or equivalent).

Why study this course?

- Current, interdisciplinary, and research-led modules guided by a vibrant academic community
- The ability to pursue your interests throughout your assignments, not just your MA dissertation

lincolnbishop.ac.uk/childrensliterature

Find out more

Get your questions answered by our expert Course Enquiries team: courseenquiries@lincolnbishop.ac.uk



MA Education

Our MA Education offers a flexible programme suitable for both early career educators and experienced practitioners. Available in three study modes. Full-time (1 year), part-time blended (2 years), and part-time online (2 years), this master's degree allows you to examine educational issues that matter to you professionally. Completing the MA Education will strengthen your ability to advance within educational settings. The programme builds knowledge and confidence in key areas of educational interest while opening doors to new opportunities.

MA, 1 year (full-time), 2 years (part-time, blended or online)

Entry typically requires a second-class degree (2:2 or above) in a relevant subject. For international applicants, English language requirements are IELTS 6.5 with a minimum of 6 in each component. Part-time blended and part-time online students are expected to hold a professional role (paid or voluntary) within an educational setting for the duration of the course, typically 5 hours a week.

Why study this course?

- Learn from a team of education specialists with expertise in a wide range of disciplines
- Study your way with our three flexible study modes that fit your lifestyle

lincolnbishop.ac.uk/maed

New flexible Master's Degrees

Our new education-related MAs are tailored to suit your lifestyle and career aspirations: with flexible study options including full-time, part-time, and 100% online delivery - Check lincolnbishop.ac.uk/masters for full details.



MA Early Years Education

This course is designed for practitioners who wish to build expertise in early childhood education and support the development of research informed and evidence-based practice. This programme allows you to examine current practice and policy while developing your knowledge of early years settings. You'll gain a systematic understanding of key national and global issues relating to Early Years Education, build critical awareness of theory and practice, and strengthen your research skills.

MA, 1 year (full-time), 2 years (part-time, blended or online)

Typical entry requirements - Entry typically requires a second-class degree (2:2 or above) in a relevant subject. For international applicants, English language requirements are IELTS 6.5 with a minimum of 6 in each component. Part-time blended and part-time online students are expected to hold a professional role (paid or voluntary) within an educational setting for the duration of the course, typically 5 hours a week.

Why study this course?

- The programme provides a dedicated focus on the unique needs of Early Years education
- Study your way with our three flexible study modes and develop confidence to advocate for positive change for young children

lincolnbishop.ac.uk/maearlyyears



MA Education (English as an Additional Language)

This course is designed for educators working with EAL students who wish to build expertise in this specialist area. The programme allows you to examine current theory and practice while developing practical strategies for supporting EAL learners. You'll gain advanced knowledge of classroom techniques, whole-school approaches, and research-informed practices for EAL pupils at compulsory school age. The course suits professionals across various educational settings, from classroom teachers to senior leaders, helping you enhance both your understanding and career prospects in this growing field.

MA, 1 year (full-time), 2 years (part-time, blended or online)

Typical entry requirements - Entry typically requires a second-class degree (2:2 or above) in a relevant subject. For international applicants, English language requirements are IELTS 6.5 with a minimum of 6 in each component. Part-time blended and part-time online students are expected to hold a professional role (paid or voluntary) within an educational setting for the duration of the course, typically 5 hours a week.

Why study this course?

- Gain specialist expertise in classroom techniques and whole-school EAL approaches
- Study your way with our three flexible study modes and develop a critical awareness and understanding of theory and practice

lincolnbishop.ac.uk/maeal



MA Educational Leadership and Management

Our MA Educational Leadership and Management is an exciting programme designed for ambitious professionals aspiring to develop their leadership and management skills. Available in three study modes—full-time (1 year), part-time blended (2 years), and part-time online (2 years)—this qualification sets you up to make meaningful impact within your professional context.

MA, 1 year (full-time), 2 years (part-time, blended or online)

Entry typically requires a second-class degree (2:2 or above) in a relevant subject. For international applicants, English language requirements are IELTS 6.5 with a minimum of 6 in each component. Part-time blended and part-time online students are expected to hold a professional role (paid or voluntary) within an educational setting for the duration of the course, typically 5 hours a week.

- Develop leadership capabilities whether you're new to leadership or already established
- Study your way with our three flexible study modes that fit your lifestyle

lincolnbishop.ac.uk/maedleader

Open Days

Get to know our campus and surroundings on an Open Day
lincolnbishop.ac.uk/opendays



MA Education with TESOL

Are you an aspiring or experienced teacher or education manager who wants to find out more about supporting English as an Additional Language (EAL) learners in primary or secondary settings in the UK? Or maybe you would like to extend your skills for English language teaching in further education? If the answer is yes, this is the ideal course for you. It would also suit a Teaching English as a Foreign Language (TEFL) teacher working in the UK, overseas, or online, who wants to develop their practice. This course will help further your knowledge of education policy for social inclusion and diversity and how to implement it in your school.

MA, 1 year, full-time

Typical entry requirements - you must have obtained, or predicted to obtain, an undergraduate honours degree in a relevant subject (or equivalent).

Why study this course?

- Hands-on approach making the most of English Language teaching opportunities and observing professionals or teaching classes
- Designed to immerse you in debates around education policy and the role of English as a world language

lincolnbishop.ac.uk/maedtesol



MA English Literature

This course offers opportunities to deepen your passion for literatures in English through research-led modules that engage with emerging disciplinary frameworks and debates. Supported by an academic team of research specialists, you will advance your academic and communication talents, furthering professional prospects. We offer a supportive learning community that recognises distinctive learning needs and interests through seven flexible modules that engage you in the latest literary debates. You will explore a stimulating range of genres, approaches, authors, and themes. Our modes of assessment are designed to develop your interests: you will choose texts, writers, genres, theories, themes, and literary periods on which to focus independently.

MA, 1 year (full-time)

Typical entry requirements - you must have obtained, or be predicted to obtain, at least a 2.2 Honours degree in English Literature or a related discipline.

Why study this course?

- A vibrant, academic community led by research specialist
- The ability to pursue your interests throughout your assignments, not just your MA dissertation

lincolnbishop.ac.uk/maenglit

“

Being on the MA has opened my eyes to my own practice. It has also allowed me to learn from other educators working in a variety of settings.

Sally
MA Education



MA Health & Social Care Leadership

This course aims to enable an in-depth knowledge and understanding of leadership practice in Health & Social Care (H&SC), informed by current scholarly research and including a critical awareness of current issues and developments at the forefront of this field. It is ideal for advanced practitioners, supervisors and managers working or volunteering in H&SC who have extensive experience in practice, and whose current role is to support and challenge those working in the field.

MA, 1 year, full-time

Typical entry requirements - you must have obtained, or be predicted to obtain, normally an undergraduate honours degree in a Humanities or Social Science related subject (or equivalent).

Why study this course?

- Opportunity to undertake a research project relevant to your practice and learn ways of approaching situations by exploring other perspectives
- Develop a deeper understanding of yourself through the exploration of theoretical issues

lincolnbishop.ac.uk/masoccareleader

Find out more

Get your questions answered by our expert Course Enquiries team: courseenquiries@lincolnbishop.ac.uk



MSc International Business

In the modern period, businesses and organisations are often international. This course is open to graduates from any discipline and designed to support in meeting your future career aspirations whether that be: working in international organisations, launching your own business or social enterprise, engaging in further postgraduate study, or any other challenging and rewarding careers you pursue after completing postgraduate study. The course will guide managers and leaders, developing new capabilities and capacities to ensure they successfully navigate increasingly ambiguous environments.

MSc, 1 year, full-time

Typical entry requirements - you must have obtained, or be predicted to obtain, a 2:2 (or NARIC equivalent) in any degree subject.

Why study this course?

- There are no requirements to have studied business previously. This course is open to learners of all disciplines preparing students to integrate with organisations operating on an international platform
- We focus on sustainable practices. Guided by the United Nations Sustainable Goals, we bring challenge to the corporate landscape

lincolnbishop.ac.uk/mscintbusiness



MA International Education

This course is an exciting distance-learning programme, suitable for educators from a variety of settings around the world including primary and secondary schools, vocational colleges, universities, privately-owned education providers and the non-profit sector. It is specifically designed for practitioners and leaders who are wanting to develop their practice or seeking an opportunity to further their career and is 100% online.

MA, 2 years, part-time, online

Typical entry requirements - you must have obtained, or be predicted to obtain, normally an undergraduate honours degree in a relevant subject (or equivalent). English language requirements are IELTS 6.5 with a minimum of 6 in each component. You will need to be working or volunteering in an educational setti

Why study this course?

- Learn from a team of educational specialists with expertise in an extensive range of disciplines
- Gain a master's degree whilst studying

lincolnbishop.ac.uk/mainted



MA Special Educational Needs & Disability

Our MA Special Educational Needs and Disabilities (SEND) is designed to reflect the interests and ambitions of graduates and practitioners engaged in the complexities and challenges related to SEND. Available in three study modes, Full-time (1 year), part-time blended (2 years), and part-time online (2 years). This programme allows you to explore, analyse and critique ideology, pedagogy and sociological frameworks concerning inclusive and specialist education.

MA, 1 year (full-time), 2 years (part-time, blended or online)

Entry to the MA SEND programmes typically requires a second-class degree (2:2 or above) in a relevant subject. For international applicants, English language requirements are IELTS 6.5 with a minimum of 6 in each component. Part-time blended and part-time online students are expected to hold a professional role (paid or voluntary) within an educational setting for the duration of the course, typically 5 hours a week.

Why study this course?

- Develop your own interests, and explore the complexities and challenges related to SEND
- Study your way with our three flexible study modes that fit your lifestyle

lincolnbishop.ac.uk/masend



MA Theology & Religious Studies

This course will take you on a journey to the religious worlds of Western and Eastern traditions, covering the burning contemporary issues that surround Religious Studies today, and delve into life's great questions. You will be able to explore the ideas and curiosity that have gripped humanity from the time we began to decorate the walls of our caves right up to launching ourselves into outer space.

MA, 1 year (full-time)

Typical entry requirements - you must have obtained, or be predicted to obtain, an undergraduate honours degree in a Humanities or Social Sciences related subject (or equivalent).

Why study this course?

- Develop an ability to frame a theological or philosophical argument and gain expertise in interpreting sources
- Acquire a greater appreciation of the rich variety of religious experiences in our world

lincolnbishop.ac.uk/matheology

Find out more

Get your questions answered by our expert Course Enquiries team: courseenquiries@lincolnbishop.ac.uk

Higher & Degree Apprenticeships

Our higher and degree apprenticeships are work-based programmes collaboratively developed by employers to develop future talent.

Our higher and degree apprenticeships bring together the best of university and vocational education. Apprenticeships allow you to work and earn a wage at the same time as developing new knowledge and professional skills.

Apprenticeships are for anyone:

- Early in their career
- Looking to upskill in their current job role
- Looking for a career change

lincolnbishop.ac.uk/hda



Career Development Professional Apprenticeship

This course will enable you to practice as a qualified Careers Professional. You will be able to enrol as a Registered Career Development Professional with the Careers Development Institute and gain a QCF level 6 Diploma in Careers Guidance and Development as part of your training. Careers Development Professionals are typically found in all education settings, training organisations, Careers and Employment Services and human resource/ learning and development departments in both the private and public sectors. Primarily, a Career Development Professional will assist individuals before and during career transitions to develop long and short-term career management skills. You will need to be employed in a setting where you are able to demonstrate the required Apprenticeship duties.

There are no formal entry requirements for this qualification although an initial assessment will take place to ensure the apprenticeship is the most appropriate training programme for you. You will need to be in employment (in England) where your line manager is able to support you through the apprenticeship. Individual employers will set the selection criteria for their Apprenticeship and employment role.

Why study this course?

- Develop your skills, knowledge and behaviours both practically through your workplace, and on taught days led by our experienced team of lecturers
- Explore the life-long meaning of 'career' in today's hyper-mobile job market, and how Career Development Professionals support clients in developing career management skills

lincolnbishop.ac.uk/appcdpa



Senior Leader Apprenticeship

This course places you and your organisation at its core and is suitable for those working in small, medium and large organisations in the public, private or third sectors. Senior Leaders are a key component of all types of business model where there is a workforce to lead, manage and support. The broad purpose of the occupation is to provide clear, inclusive and strategic leadership and direction relating to their area of responsibility within an organisation.

There are no formal entry requirements for this qualification, although an initial assessment will take place to ensure the apprenticeship is the most appropriate training programme for you. You will need to be in employment (in England) in a setting where your line manager is able to support you through the apprenticeship. Individual employers will set the selection criteria for their Apprenticeship and employment role.

Why study this course?

- Delivered via blended teaching approach, with two on-site teaching days per module
- Option to progress onto complimentary MBA top-up module upon successful completion of end point assessment

lincolnbishop.ac.uk/appsla

Open Days

Get to know our campus and surroundings on an Open Day

lincolnbishop.ac.uk/opendays



Chartered Manager Degree Apprenticeship

Are you a leader or manager and would like to develop your knowledge, skills and behaviours within the role? Through this course, you will work towards being a Chartered Manager - someone who can take responsibility for people, projects, operations and/or services to deliver long term organisational success, with the professional recognition of your ability to deliver impact, behave ethically and demonstrate your commitment to continual learning and development. Within the apprenticeship you will develop a range of knowledge, skills and behaviours, including operational strategy, project management, digital business and new technologies, managing people, developing collaborative relationships, decision making, agility and professionalism.

There are no formal entry requirements for this qualification although an initial assessment will take place to ensure the apprenticeship is the most appropriate training programme for you. You will need to be in employment (in England) where your line manager is able to support you through the apprenticeship. Individual employers will set the selection criteria for their Apprenticeship and employment role.

Why study this course?

- Achieve a BA (Hons) in Business Leadership and Management whilst developing your current management career
- An Apprenticeship is fully funded through the apprenticeship levy or 95% funded for small businesses

lincolnbishop.ac.uk/appcmd



Project Manager Apprenticeship

This course is tailored to equip you with the skills and knowledge needed for successful Project Management careers. Combining academic learning with real-world experience, the course is designed for both newcomers and those looking to advance within their organisations.

Typically run over 3 years, you will develop knowledge and skills in governance and financial control, organisational change management, quality management, risk management and organisational strategy. You will develop key competencies in managing people, processes, and perspectives, while also gaining eligibility for full membership with the Association for Project Management (APM) upon completion.

There are no formal entry requirements for this qualification although an initial assessment will take place to ensure the apprenticeship is the most appropriate training programme for you. You will need to be in employment (in England) where your line manager is able to support you through the apprenticeship. Individual employers will set the selection criteria for their Apprenticeship and employment role.

Why study this course?

- On successful completion of EPA, Apprentices are eligible to become full members of the Association for Project Management (APM)
- Achieve a BA (Hons) Degree and IPMA Level D qualification

lincolnbishop.ac.uk/apppm





Primary Teacher Apprenticeship (QTS)

The Primary Teacher Apprenticeship at Lincoln Bishop University offers a 16-month route to Qualified Teacher Status for those with a relevant degree. This apprenticeship program combines workplace learning with structured training, following the DfE's Initial Teacher Training and Early Career Framework. Students work in primary schools while receiving support to complete their 'Off the job' training requirements. Our ADEPT curriculum goes beyond minimum teaching standards, providing enrichment opportunities that help you become a reflective and confident teacher. The program uses a flexible, blended learning approach with limited campus visits, making it accessible regardless of your location. You'll learn from and be supported by our expert teaching team throughout your journey to QTS.

Entry requirements

Academic Requirements

To join our Primary Teacher Apprenticeship program, you will need:

- A UK bachelor's degree (or equivalent qualification) - this must comprise 300 higher education credit points with at least 60 credits at level 6
- GCSE grade C/4 or above (or equivalent) in English and Mathematics.

Please note that a grade 4 in either English Language or English Literature GCSE satisfies the English requirement.

If you have a foundation degree, you'll need to have completed additional study totalling at least 60 credits at level 6 to meet the degree requirement.

Additional Requirements

All applicants must:

- Complete an enhanced Disclosure and Barring Service (DBS) check
- Meet all current statutory safeguarding requirements
- Meet any additional requirements specified by your employing school

These entry requirements comply with the Department for Education's Initial Teacher Training criteria for the award of Qualified Teacher Status. Should national requirements change, our admission criteria will be updated accordingly.

Why study this course?

- Study with subject experts in a program that goes beyond minimum requirements, with extra opportunities to build your teaching confidence and skills.
- The blended approach combines campus visits with adaptable "Off the Job" training that works for schools and distance learners.

lincolnbishop.ac.uk/appst

Open Days

Get to know our campus and surroundings on an Open Day

lincolnbishop.ac.uk/opendays



Secondary Teacher Apprenticeship (QTS)

The Secondary Teacher Apprenticeship at Lincoln Bishop University offers a 12-month route to Qualified Teacher Status for those with a relevant degree. This apprenticeship program combines workplace learning with structured training, following the DfE's Initial Teacher Training and Early Career Framework. Students work in primary schools while receiving support to complete their 'Off the job' training requirements. Our ADEPT curriculum goes beyond minimum teaching standards, providing enrichment opportunities that help you become a reflective and confident teacher. The program uses a flexible, blended learning approach with limited campus visits, making it accessible regardless of your location. You'll learn from and be supported by our expert teaching team throughout your journey to QTS.

Entry requirements

Academic Requirements

To join our Primary Teacher Apprenticeship program, you will need:

- A UK bachelor's degree (or equivalent qualification) - this must comprise 300 higher education credit points with at least 60 credits at level 6
- GCSE grade C/4 or above (or equivalent) in English and Mathematics.

Please note that a grade 4 in either English Language or English Literature GCSE satisfies the English requirement.

If you have a foundation degree, you'll need to have completed additional study totalling at least 60 credits at level 6 to meet the degree requirement.

Additional Requirements

All applicants must:

- Complete an enhanced Disclosure and Barring Service (DBS) check
- Meet all current statutory safeguarding requirements
- Meet any additional requirements specified by your employing school

These entry requirements comply with the Department for Education's Initial Teacher Training criteria for the award of Qualified Teacher Status. Should national requirements change, our admission criteria will be updated accordingly.

Why study this course?

- Study with subject experts in a program that goes beyond minimum requirements, with extra opportunities to build your teaching confidence and skills.
- Earn a salary while gaining classroom experience and working toward QTS

lincolnbishop.ac.uk/appst

Doctoral Studies

If you are exceptionally motivated with an innate desire to research at the highest levels, a doctoral programme could be for you.

We offer two pathways, the EdD and PhD, which are awarded by the University of Leicester. Both routes are designed to empower you to conduct high quality research, supported by teams of experts in their fields.

lincolnbishop.ac.uk/doctoral

“

Throughout my course, I have loved the freedom to explore my own research ideas and to develop the skills that I needed in order to independently undertake my research projects.

Jane
PhD



EdD (Doctorate of Education)

The Doctorate of Education (EdD) is the premier academic qualification for experienced professionals working in the education sector. It is aimed at those who intend to extend their professional development and understanding through research and reflection on practice. The EdD is ideally suited to those who benefit from studying in a structured, collegiate environment with the first two years comprising taught modules. These modules enable the development of research skills and the intellectual rigour demanded of professionals at doctoral level. They also provide the foundation for the subsequent period of study, the thesis stage, during which a thesis is written and focused on an area of professional interest.

For full details of EdD Doctoral Study at Lincoln Bishop, including support available, full entry requirements and much more, visit our website by scanning the QR code above.

lincolnbishop.ac.uk/edd



PhD (Doctor of Philosophy)

A PhD is one of the highest internationally recognised academic qualifications that any institution can award. Lincoln Bishop provides opportunities for full or part-time PhD study within its community of scholars and healthy research culture. PhD projects are supported in a wide range of education and related fields, and in other humanities and social science disciplines where there are well-established research strengths, including English Literature, History, Psychology, and Theology. Research supervision for the PhD is undertaken at Lincoln Bishop with the degree itself awarded by the University of Leicester.

For full details of PhD Doctoral Study at Lincoln Bishop, including support available, full entry requirements and much more, visit our website by scanning the QR code above.

lincolnbishop.ac.uk/phd

Further info

Okay, so you've chosen your course, you've seen what our campus has to offer and you're convinced Lincoln Bishop is for you. Perfect.

Now for all the complicated stuff, right? Well that couldn't be further from the truth.

We have teams of experts on hand to make sure your application journey is as hassle-free as possible. Anything you need – whether that's help with your application, a chat about entry requirements, or just clarification that you've done things right – we're here to help.

How to apply

Applying for a course at Lincoln Bishop is easy. Simply head over to our website and find the course you're looking to study. Simply click the large APPLY NOW button on the course page.

You'll be taken to the relevant application page and guided through the process. For undergraduate courses this will be via UCAS (the University and Colleges Admissions Service), for PGCE courses it will be via the Department for Education's Apply portal, and for Master's courses and Doctoral study it will be directly to us.

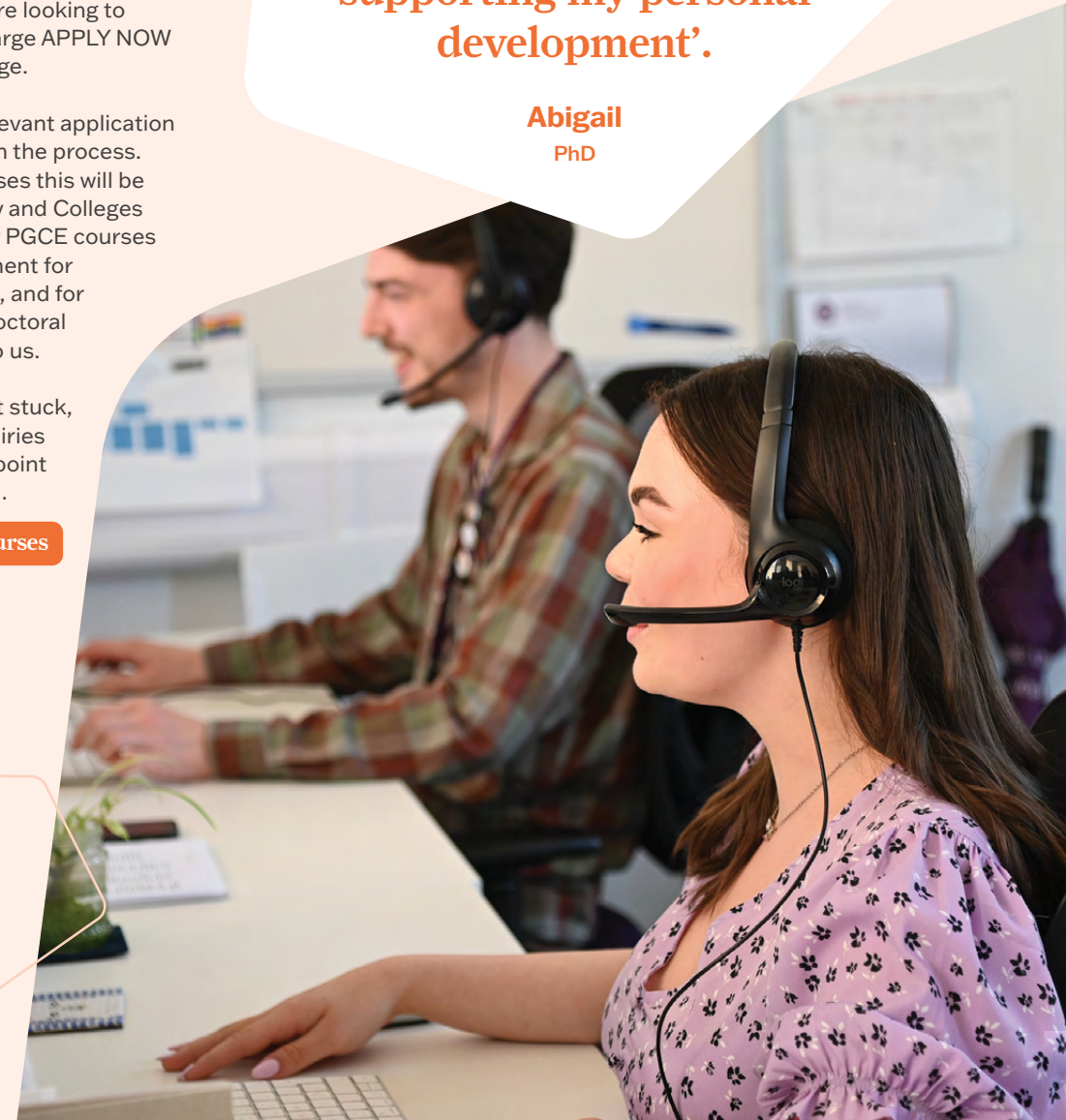
And, of course, if you get stuck, our helpful Course Enquiries team will be on hand to point you in the right direction.

lincolnbishop.ac.uk/courses

“

My supervisors not only help me shape my work academically, but they've both been amazing in supporting my personal development'.

Abigail
PhD



Our entry requirements

We use UCAS Tariff points to advertise the entry requirements for most of our courses. The UCAS Tariff awards points for most qualifications based upon the breadth and depth of study involved. This allows us to consider a wide range of qualifications in a fair and transparent way. To enhance the transparency further, UCAS and universities have been working on extending the Tariff to include even more qualifications, with a fairer formula for determining points.

For example, to achieve 96 UCAS Tariff points, you could have:

- 3 A-levels at grades CCC
- A BTEC Extended Diploma at grade MMM
- A CACHE Diploma at grade C
- T Level (Full T level achieved) at grade P (A*-C)

We do realise that life experience, especially in some of our courses, is crucial and we don't underestimate that. It may be that we ask you to come and talk to a member of academic staff or complete a written assignment in lieu of a qualification. Every application is looked at very seriously, so please do speak to us if you're unsure – we wouldn't want you to miss out on the Lincoln Bishop experience!

Contextual offers

Everyone, regardless of background, should have access to an excellent university education. That's why we're proud to offer a contextual admissions process, enabling us to make flexible offers that consider your background, achievements, challenges and personal circumstances.

We can now make achievable offers to those who have faced disadvantages in their lives by reducing the UCAS tariff points required for undergraduate courses, giving people who might not otherwise have been able to pursue their desire of a university degree a chance to do so.

Find out if you're eligible at

lincolnbishop.ac.uk/contextualoffers

International students

We welcome students from across the globe, and try to do everything we can to make the transition to living and studying in the UK as simple as possible.

As an international student you can apply for a place on one of our courses directly, or via a representative in your country. If you have any questions about applying to Lincoln Bishop, or any aspect of becoming a student in the UK, visit our website -

lincolnbishop.ac.uk/international

We do ask that all students have a good standard of written and spoken English. If English isn't your first language, we will assess your standard of written and spoken English in a number of different ways.

If you require a Student Route visa to study in the UK, you will typically be required to sit a Secure English Language Test (SELT). For all of our courses, we require a level of

English that is equivalent to an overall IELTS score of B2 or above to meet minimum UKVI requirements, however this can vary per level of course. We realise that you may have very different English Language qualifications to IELTS, or want to know what alternatives we accept, so please check our website for the most up to date information. If you need more information, please give us a call or email if you'd like any further clarification.



Fees and Finance

Sorting out student finance arrangements can be a daunting prospect – but it needn't be. Our Student Advice & Wellbeing team are experts in the field of student finance, and are on hand to help you with the funding arrangements for your studies.

They'll offer you a range of services to guide you through all of the key aspects of student finance step by step, giving you any support you may need. If you're stuck, need some guidance or just want to make sure you're doing things right, they're here for a chat.

There are a lot of different areas involved in student finance – fees, loans, bursaries, grants, repayments – it can all get a little confusing! Fortunately, we have in depth and up-to-date information on all money matters on our website. Here you'll find information about our tuition fees, what financial support we have to offer, how you can apply for loans and much more.

Our website details the main areas of financial support available to you, depending on your eligibility, including:

- **Tuition fee loans** – to cover the cost of your tuition fees
- **Maintenance loans** – to contribute towards your living costs
- **Grants** – including the Parents Learning Allowance, Childcare Grant, and Adult Dependents' Grant
- **Disabled Students Allowance** – needs based support for disabled students
- **Bursaries** – including help for student parents, care leavers, and students with caring responsibilities

We're here to help wherever we can, so visit our website or speak to our Student Advice & Wellbeing team to find out more.

lincolnbishop.ac.uk/money

Find out more

We have a number of other opportunities where you can speak to members of our staff, visit the campus or take part in a subject-related activity here at the University.

We offer subject-specific experience days where you can come to campus, meet your future lecturers, and learn more about how your subject teaching will be delivered. All our upcoming events can be found at –

lincolnbishop.ac.uk/events

Our Student Recruitment team delivers presentations, workshops and attends careers evenings in schools and colleges - ask your Head of Sixth Form or Careers Adviser whether they have made a booking with us.

Campus tours are carried out by our Student Ambassadors, who'll give you a first-hand insight into life at Lincoln Bishop. Simply email courseenquiries@lincolnbishop.ac.uk to arrange.

The team also attends higher education fairs and UCAS events throughout the UK, where they'll be happy to answer any questions you may have about our courses and university life.

We have a Parents Guide to HE and a range of resources aimed at parents which can be found at –



lincolnbishop.ac.uk/parents

If you apply to Lincoln Bishop and are made an offer, you'll be invited to attend an Offer Holder Day. These days are tailored to you, allowing you to attend a typical subject session, meet some of your future friends and tutors, and sample some of the services we have on offer.



UK

Airports close to Lincoln Bishop

-  Humberside
-  East Midlands Airport

Where	Road	Rail
Sheffield	55 miles	1hr 20m
Nottingham	39 miles	55m
Leeds	77 miles	2hrs
York	69 miles	1hr 45m
London	144miles	2hrs

Lincoln



Lincoln Bishop University



Index

A

About Us _____ 10

Accessibility _____ 40

Accommodation _____ 20

Applying _____ 95

Apprenticeships _____ 86

Archaeology courses _____ 59

B

Bursaries _____ 39, 98

Business courses _____ 59, 79, 84

C

Campus _____ 22

Campus tours _____ 98

Careers _____ 28

Chaplaincy _____ 36

Childhood courses _____ 47, 54, 61

Children's Literature courses _____ 79

City _____ 18

Computing courses _____ 74

Contents _____ 5

Counselling courses _____ 57, 60

Courses _____ 42

Criminology courses _____ 60

Curiositea _____ 24

D

Degree Apprenticeships _____ 86

Disabled Student Allowance _____ 98

Doctoral study _____ 92

E

Early Childhood courses _____ 47, 51, 53, 54, 61, 63

Eating & Drinking _____ 24

EdD courses _____ 93

Education courses _____ 47, 48, 51, 53, 54, 55, 61, 65

English courses _____ 62, 74, 79, 82

English Language & Teaching courses _____ 62, 81, 82

Entry requirements _____ 96

Ethics courses _____ 67

F

Fees & Finance _____ 98

Find out more _____ 98

Foundation Degrees _____ 46

Foundation Year courses _____ 68

Future _____ 28

G

Graduate Attributes _____ 31

Grants _____ 98

Gym _____ 23, 24

H

Health & Social Care courses _____ 48, 63, 83

Health & Wellbeing courses _____ 63

Higher Degree Apprenticeships _____ 86

History courses _____ 64

How to Apply _____ 95

I

Inclusivity _____ 35

International Business courses _____ 84

International Education courses _____ 84

International students _____ 97

L

Lincoln _____ 18, 101

Lincoln Bishop University Students' Union _____ 26, 33

Literature courses _____ 62, 79, 82

Living at Lincoln Bishop _____ 20

Loans _____ 98

M

Maps _____ 100

Master's Degrees _____ 78

MBA _____ 79

Military History courses _____ 64

Money _____ 39, 98

O

Open Days _____ 12

Opportunities _____ 32

P

PGCE courses _____ 73, 74, 75

PGDE course _____ 76

PhD courses _____ 93

Philosophy courses _____ 67

Postgraduate courses _____ 72

Primary Education with QTS course _____ 65

Primary Teaching courses _____ 53, 65, 73

Psychology courses _____ 65

Q

QTS courses _____ 53, 65, 70, 73, 74, 75

R

Refectory _____ 24

Routes into Teaching _____ 70

S

Secondary Teaching courses _____ 74

SEND courses _____ 49, 57, 66, 85

Social Care courses _____ 48, 63, 83

Societies _____ 32

Sociology courses _____ 66

Special Educational Needs courses _____ 49, 57, 66, 85

Sport courses _____ 67

Sport & Fitness _____ 24

Student Advice _____ 36, 98

Students' Union _____ 26, 33

Support _____ 34

T

Teaching courses _____ 47, 53, 55, 62, 65, 73, 74, 75, 76

Terms and conditions _____ 98

TESOL courses _____ 61, 62, 82

Theology courses _____ 67, 85

Top-up Degrees _____ 52

Tuition Fees _____ 98

U

UCAS tariff _____ 95, 96

Undergraduate Degrees _____ 58

V

Visit us _____ 13, 98, 100

W

Wellbeing _____ 36

Wellbeing courses _____ 63

The small print

So here we are at the small print – the last and often most overlooked part of any prospectus. Not as important as the course listings, not as colourful as the photos, not as glamorous as the front cover, but rather tucked away in the back where few people tend to venture. But you're here. And you're still reading. That probably means that you have a curious and keen mind – in which case you'd fit in very well here at Lincoln Bishop. Perhaps you should check out our wide range of courses before reading on? Go on, you never know what you might find which may just change your life forever. Of course, the other reason you may be here is that you're looking for something. Perhaps you're looking to find out that this marvellous publication was lovingly hand-crafted by the Lincoln Bishop Marketing team, who can be contacted with constructive feedback and general praise by emailing marketingteam@lincolnbishop.ac.uk. Or are you keen to know that it was designed with skill and precision by Sean Coleman of Coleman Design, whose catalogue of work can be viewed at colemandesign.co.uk. Or maybe you're a fan of the look and feel of it, and want to find out more about Visual Print and Design who printed it for us, and can be contacted through their website – visualprint.co.uk. Well, whatever it is you're looking for, we hope you found it – and thank you for taking the time to find out more about Lincoln Bishop. We can't wait to meet you very soon.

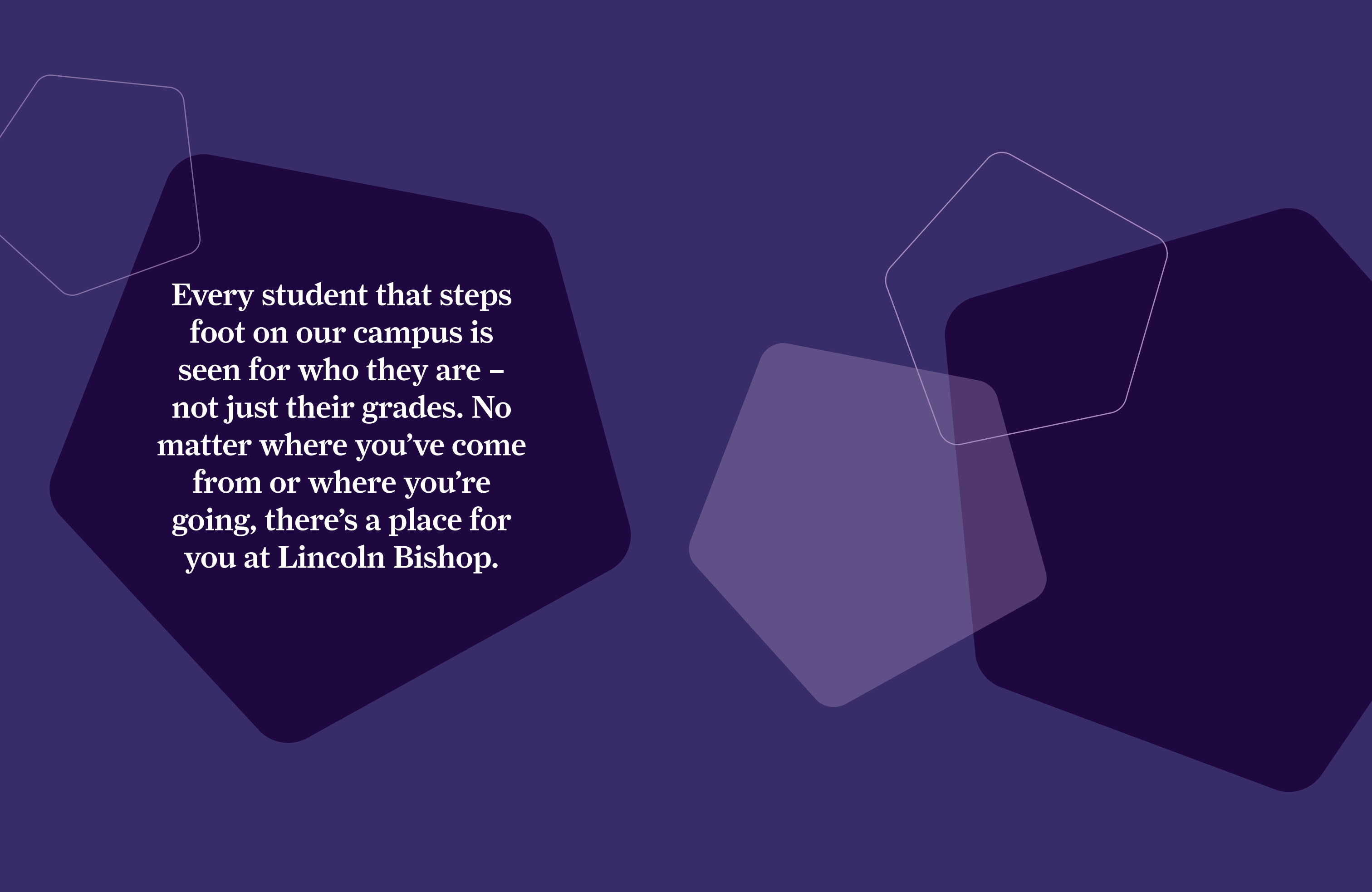
Accuracy

We've put this prospectus together to provide you with all the information we think you'll need to make your decision to study Lincoln Bishop. We want to show you what we've got to offer, tell you about our courses, and give you a snapshot guide to life at our university, so that you can make an informed decision. Everything written here is as up-to-date and accurate as we can possibly make it at the time these words are printed. However, higher education in the UK is an incredibly fast-moving and ever-changing environment. In such an environment (as we're sure you'll appreciate) there's a good chance that things can change in all sorts of areas. So please use this prospectus as it is intended to be used – as a guide to Lincoln Bishop and our courses right now (August 2025). For all the very latest up-to-the-minute information on everything we have to offer, visit our website – lincolnbishop.ac.uk

Terms and conditions

There can be a lengthy period of time between us printing this prospectus and us being able to receive and process applications, so please check our website (lincolnbishop.ac.uk) before making an application, in case there are any changes to the course you are interested in or to other facilities and services described here. Where there is a difference between the contents of this prospectus and our website, the contents of the website take precedence and represent the basis on which we intend to deliver our services to you. Any offer of a place to study at Lincoln Bishop University is subject to terms and conditions, which you are advised to read before making an application. They can be found here at lincolnbishop.ac.uk/conditions. The terms and conditions set out when, for example, we might make changes to your chosen course or to student regulations. It is therefore important you read them and understand them. For example, in the event that Lincoln Bishop University needs to apply its Force Majeure Regulations (as we did during the COVID-19 pandemic), we reserve the right to change the mode of delivery of teaching, learning and assessment. This may include blended learning (i.e. partly in-person and partly remote) or fully online, depending on the prevailing circumstances. Should any of these changes become necessary, we will give you as much notice as possible before they come into effect and ensure that any disruption to your studies is minimised.

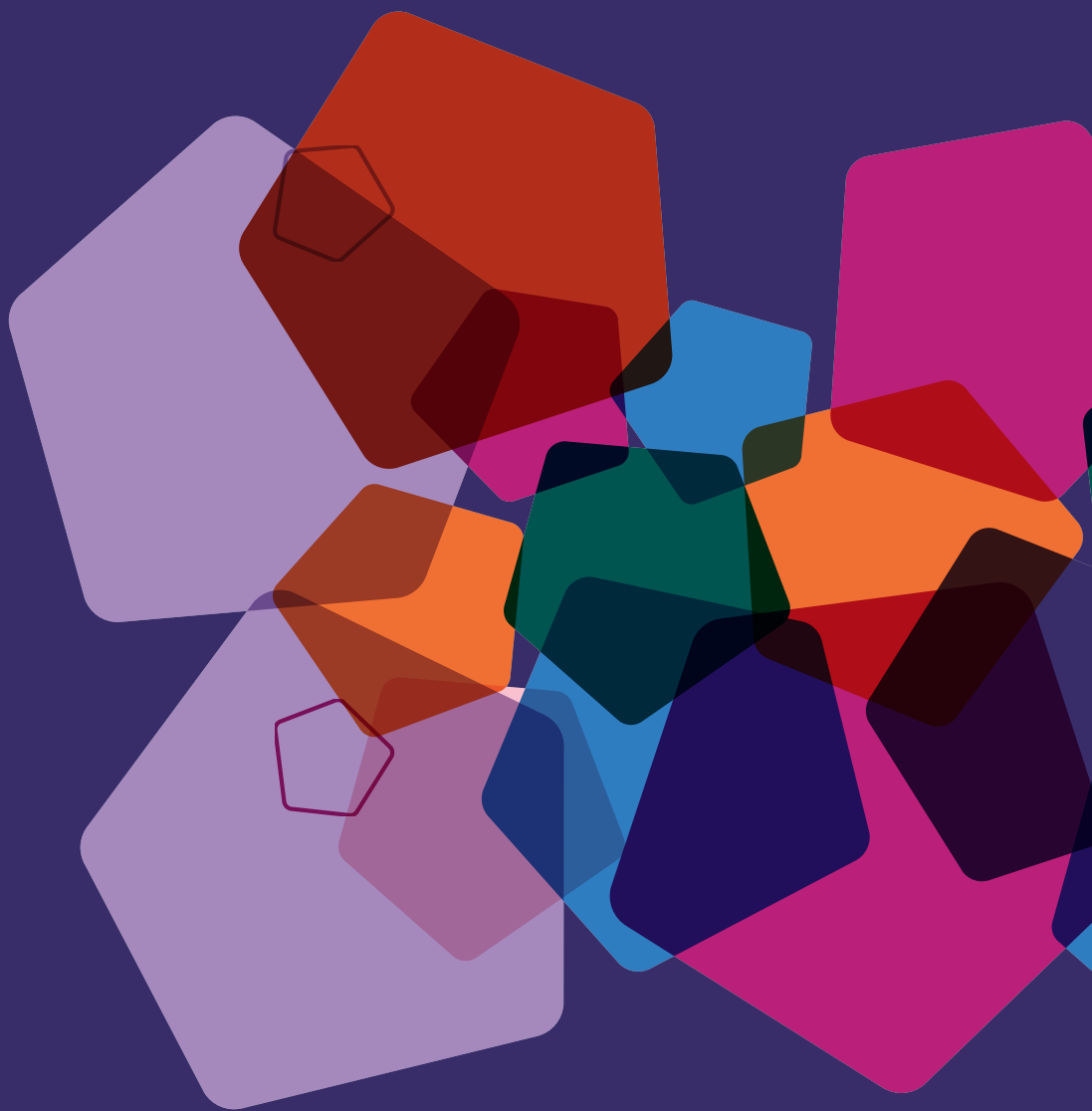




**Every student that steps
foot on our campus is
seen for who they are –
not just their grades. No
matter where you've come
from or where you're
going, there's a place for
you at Lincoln Bishop.**



Lincoln Bishop University



Lincoln Bishop University
Longdales Road
Lincoln LN1 3DY
lincolnbishop.ac.uk



@LincolnBishopUni