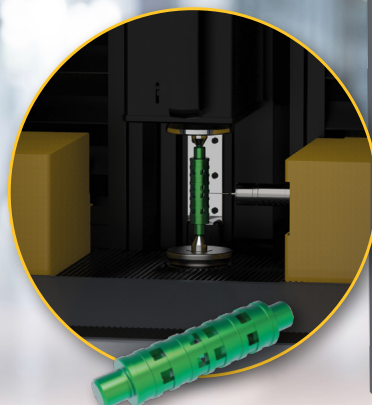


NEW
★
PRODUCT



SYLVAC SCAN

S145 - 3D PROBE



For perfect measurement of blind features such as holes and slots.

Our S145 machines can now be equipped with a 3D probe allowing precise measurement of shafts with blind features such as holes and slots.

Ideal solution for runout and form.

SCAN S145-P



Super fast

Accurate measurement of cylindrical parts in just a few seconds.



Easy to use

Easy programming in our Reflex-SCAN+ software



High precision

High-precision measurement of runout, form and features, otherwise hidden from view on standard machines.

PRODUCT SUMMARY

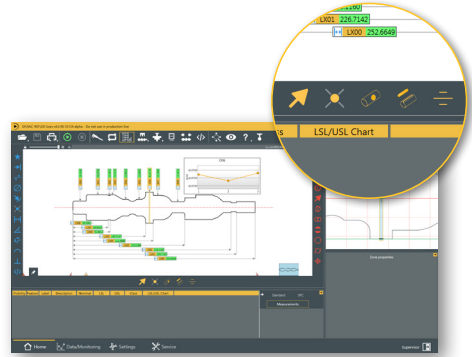
The Sylvac-Scan S145 optical machine has been designed to measure medium to large cylindrical parts, up to 145mm in diameter and 1800mm in length.

New application with 3D probe

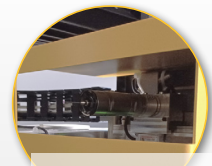
The addition of the Renishaw SP25M probe offers a multi-sensor solution for characteristics not visible with optics.

Benefits

- Complete measurement with a single system
- Seamless integration with combined sensor measurements
- Easy programming thanks to user-friendly functions
- Full touch probe scanning capability for measuring form
- Interchangeable probe stylus increased access
- Automated probe qualification routine
- Typical measurements include : hole and slot size, location and form, roundness, radial and axial runout



Main interface with 3D probe toolbar



Full 2D axis movement for uncompromised measurement

Renishaw SP25M probe

TECHNICAL DATA

		902-4145-05 SCAN S145		902-4147-05 SCAN S145L		902-4148-05 SCAN S145XL	
		Diameter	Length	Diameter	Length	Diameter	Length
Measuring range	mm	145	615	145	1230	145	1750
Resolution	mm	Diameter : 0.0001 / Length : 0.0001					
Accuracy of the machine	µm	Diameter : (1.5 + D/100) / Length : (4 + L/100)					
Measuring volume of the probe	mm	PX: 615 / PY: +60, -40 / PZ: +130, -15		PX: 1230 / PY: +60, -40 / PZ: +130, -15		PX: 1750 / PY: +60, -40 / PZ: +130, -15	
Repeatability 2σ	µm	Diameter : 0.5 / Length : 1.0					
Holding capacity	mm	200*	615	200*	1230	200*	1750
Axial positioning speed	mm/s	Up to 200					
Rotational axis	deg/s	360					
Max. part weight	kg	100					
Machine weight	kg	550		670		817	

* with 3D probe