

High Accuracy Image-Based Inspection





Our Entry Level, Fixed Stage Machine

The Baty Velo is the latest innovation in the Baty Venture FV series, designed to bring the power of flash measurement to more users, more environments, and more applications. Compact, lightweight, and competitively priced, Velo offers full-featured measurement capability with premium telecentric optics and **3µm accuracy** - making it ideal for high-volume inspection of low-cost components.



3µm accuracy

Compact & Lightweight

- Small footprint and portable build
- Easily moved from cell to cell
- Perfect for desktop use in tight production spaces
- Automatic part grading for matched assembly operations

High-Speed Measurement

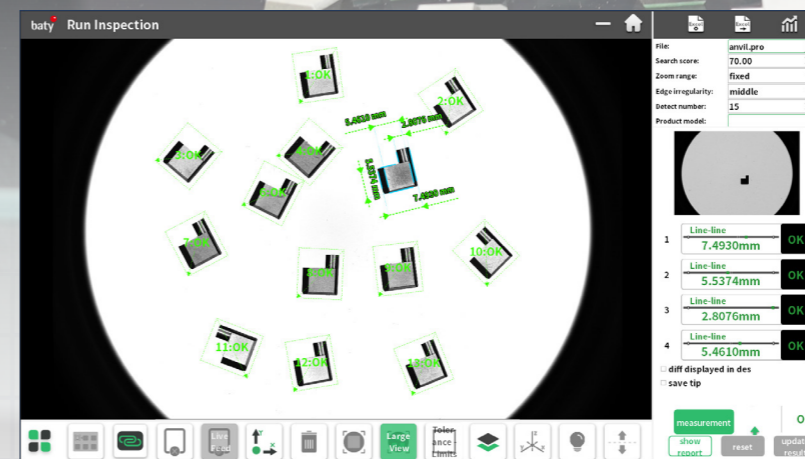
- Fixed 100mm x 80mm field of view
- Delivers hundreds of measurements per second
- Ideal for repeatable inspection cycles of similar parts
- 3µm accuracy

Premium Optics

- Full telecentric backlight for distortion-free imaging
- Single LED ring light for effective surface illumination
- Built-in Auto Focus ensures consistent, clear results

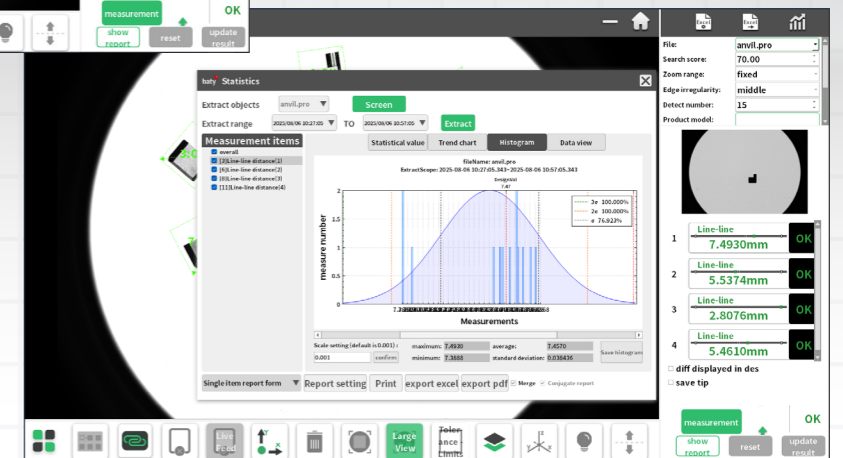
Visit our Website

For more information please click here



Why Choose Velo?

- Lower Cost
- Faster ROI
- Greater Flexibility





User Friendly Software

- Simple and intuitive user interface designed with operator in mind.
- Easy to use software allows creation of new inspections quickly and easily with minimal experience.
- Dedicated functions for measuring gears, threads, O rings and springs.
- CAD Import enables user to compare profiles to CAD model.
- Auto-create complete inspections from an imported .dwg file, including dimensions and tolerance information.
- Easy reporting including on screen pass / fail classification.

Automatic Inspection Reports

5 A range of Excel compatible reports are immediately available after each inspection, providing measurement data for each measurement including a pass / fail classification. Single part reports include a dimensioned image of the part for easy comparison to the drawing.

Batch inspection results are conveniently compiled into a single batch report. Using character recognition, the software automatically detects identification numbers on each part and then lists the measured results against each part number.

SPC data reports are also included as standard including normal distribution curves and CP, CPK calculations to monitor process capability.



Velo FV-1080V Specification

Measurement Range (mm)	Ø100 x 80	
Accuracy (µm)	± 3	
Repeatability (µm)	± 1	
Image Sensor	20 Mega-pixels	
Illumination System	Lens	ø100mm, ø100mm Bi-telecentric lens
	Surface Light	Ring lighting (white LED)
	Transmission Light	Telecentric Parallel Illumination (Green LED)
Dimensions (mm)	455x215x660	
Weight (kg)	27	
Max Load (kg)	3	
Environmental Spec	20°C ±2°C, relative humidity: 30%-80%, vibration:<0.002g, <15Hz	
Voltage	220V~ 50Hz 600W	

[Visit our Website](#)

For more information please click here





Find Out More

To find out more about the Venture FV series including return on investment or for an on-site demo, please contact

E: sales@bowersgroup.co.uk

W: www.bowersgroup.co.uk/contact-us

T: +44 1276 469866

7

Comprehensive Service & Support

To find out more about the Venture FV series including return on investment, please contact:

E: service@bowersgroup.co.uk

W: www.bowersgroup.co.uk/contact-us

T: +44 1276 469866

Visit our Website

For more information please click here



velobrochure_issue02

