



GREENING THE BLUE REPORT 2017

THE UN SYSTEM'S ENVIRONMENTAL FOOTPRINT AND EFFORTS TO REDUCE IT

UN 
environment

GREENING
THE BLUE. 

2016 OVERVIEW

As a result of the 2007 United Nations (UN) Climate Neutral Strategy, the UN system has been working over the past decade to measure and reduce the environmental footprint of its facilities and operations.

There are three main objectives to the UN's approach:

1. To **measure** and report environmental impacts
2. To undertake efforts to systematically manage and **reduce** environmental impacts
3. To **offset** emissions in order to achieve climate neutrality across the UN by 2020.

The universal adoption of the Sustainable Development Goals in 2015 has illustrated that the UN must show leadership at all levels, making the integration of sustainability considerations throughout the UN system more important than ever.



MEASURE:
GREENHOUSE GAS EMISSIONS

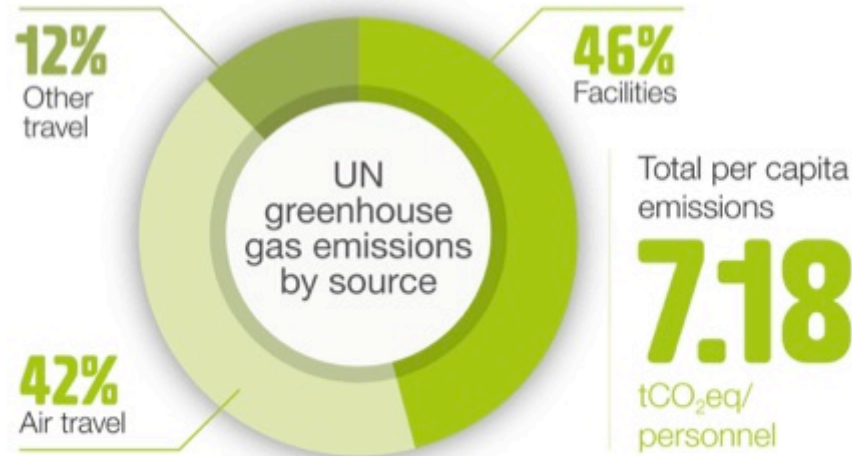


GREENHOUSE GAS EMISSIONS

The UN first reported its greenhouse gas emissions in 2009 for 2008 emissions.

Total UN greenhouse gas emissions for 2016

1.90 MILLION tCO₂eq



The emissions data covers 264,221 personnel, representing 67 UN system entities.

UN entity	Number of personnel (k)	Total emissions* (tCO ₂ e)	Per capita emissions (tCO ₂ e/personnel)	Share of total emissions (%)			Facilities-related emissions intensity (kgCO ₂ e/m ²)
				Air travel	Other travel	Facilities	
BRS	70	338	4.83	98	0	2	5.34
CBD	126	1,303	10.34	97	1	2	6.93
CTBTO	269	1,599	5.94	76	1	21	40.02
ECA	1,537	4,420	2.88	92	4	4	2.13
ECE	221	1,306	5.94	81	0	19	19.16
ECLAC	700	2,601	4.14	65	1	34	48.95
ESCAP	985	5,098	6.09	41	1	58	57.48
ESCWA	437	5,019	11.48	15	1	84	100.92
FAO	11,582	45,108	3.89	59	5	36	61.41
Field Missions ¹	124,683	1,051,771	8.44	32	14	54	377.94
IAEA	2,792	34,656	12.48	58	0	42	79.11
ICAO ²	807	5,353	6.63	45	2	53	65.50
IFAD	1,029	4,702	4.57	84	6	10	16.09
ILO	2,706	14,213	5.25	62	7	31	76.13
IMF	4,550	45,756	10.06	51	1	48	80.98
IMO	340	4,079	12.00	25	1	74	128.60
IOM	317	1,227	3.87	82	2	16	25.39
ITC	400	2,420	6.05	95	1	4	10.36
ITC-ILO	530	2,468	4.66	81	1	18	13.01
ITU	896	3,408	3.80	67	1	32	22.00
OHCHR	600	3,617	6.36	92	1	7	14.59
OPCW	520	3,136	6.03	85	3	12	16.38
Ozone Secretariat	17	504	29.65	96	2	2	48.89
UNAIDS	739	4,305	5.83	51	13	36	46.86
UNCCD	61	621	10.19	95	0	5	5.83
UNCDF	130	1,135	8.73	87	1	12	113.67
UNDP ³	16,445	69,054	4.20	48	14	38	75.86
UN Environment	1,364	6,722	4.93	76	2	22	57.63
UNESCO	6,090	19,224	3.16	44	4	52	40.71
UNFCCC	500	3,177	6.35	96	1	3	2.52

UN entity	Number of personnel (k)	Total emissions* (tCO ₂ e)	Per capita emissions (tCO ₂ e/personnel)	Share of total emissions (%)			Facilities-related emissions intensity (kgCO ₂ e/m ²)
				Air travel	Other travel	Facilities	
UNFPA	3,759	19,283	5.13	43	27	30	61.21
UN-Habitat	314	3,269	10.41	90	2	8	34.27
UNHCR	950	2,227	2.34	95	2	3	3.79
UNHQ ⁴	8,300	36,111	4.59	51	1	48	52.98
UNICEF	16,139	79,967	4.95	39	20	41	53.69
UNIDO	2,209	9,166	4.15	80	3	17	12.86
UNITAR	85	475	5.59	96	1	3	10.45
UNOG ⁵	2,541	8,485	3.34	64	2	34	19.17
UNON	828	1,983	2.39	38	4	58	34.44
UNOPS	3,234	14,616	4.52	52	19	29	65.10
UNOV ⁶	1,092	4,511	4.13	76	3	21	14.09
UNRWA	4,616	18,211	3.95	1	46	53	111.71
UNSSC	50	189	3.78	86	2	12	7.98
UNU	154	1,282	8.32	47	0	53	104.99
UNV	156	282	1.81	71	4	25	6.90
UN Women	2,029	11,252	5.55	65	6	29	107.46
UNWTO	177	532	3.01	49	4	47	39.80
UPU	260	983	3.78	69	2	29	22.96
WFP	15,289	82,170	5.37	29	36	36	13.56
WHO	2,471	20,697	8.38	91	1	8	21.47
WIPO	1,545	7,243	4.69	74	1	25	27.59
WMO	340	5,660	16.65	88	2	10	16.94
World Bank Group ⁷	15,395	211,960	13.77	66	2	32	86.86
WTO	845	3,724	4.41	87	3	10	8.99
UN System	264,221	1,896,199	7.18	42	12	46	104.81

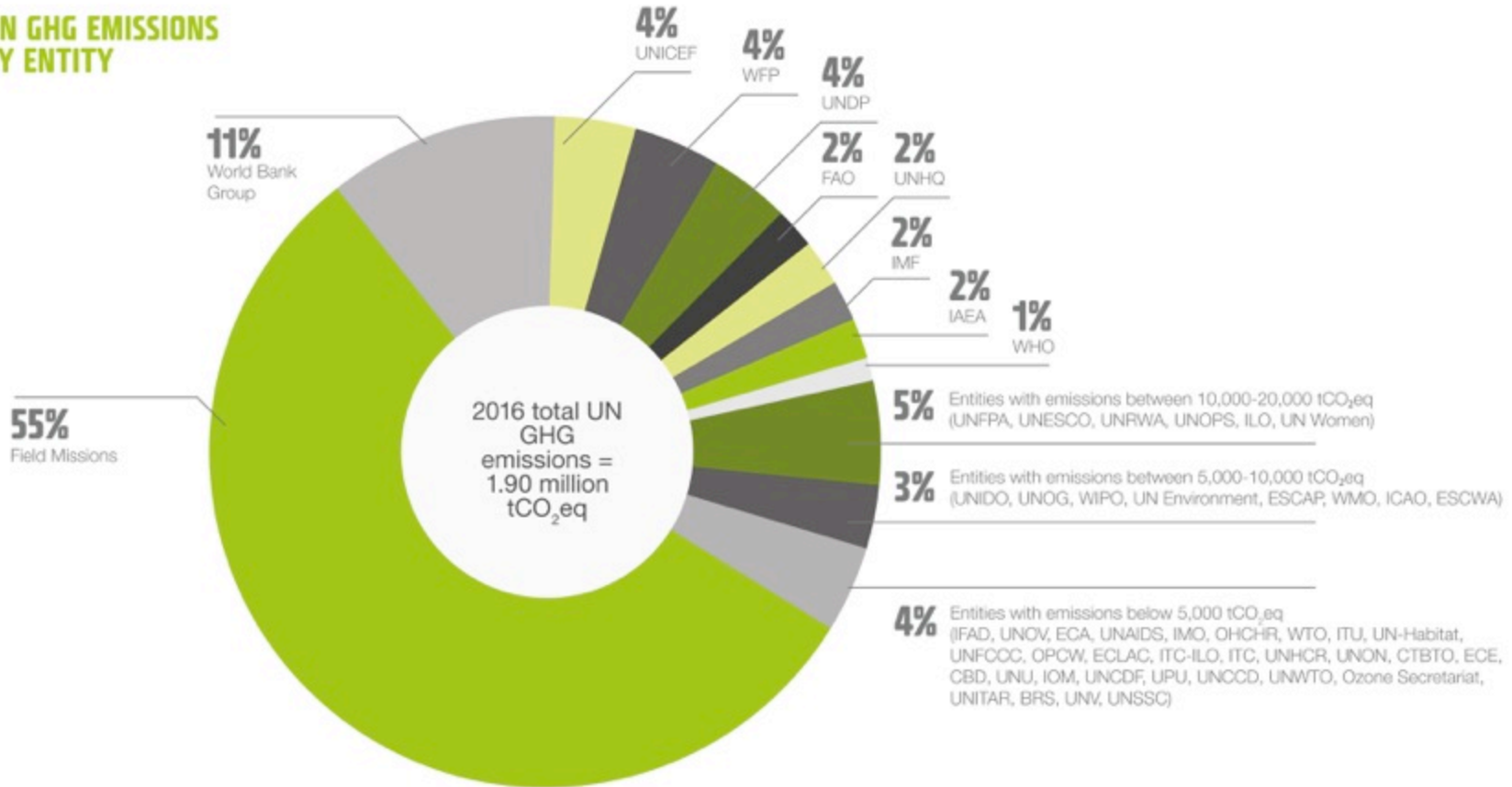
⁴ Climate neutral entities

- Field Missions (FM), DFS/DPA/DFND refers to peacekeeping operations, special political missions and support missions. It includes the emissions resulting from the use of armoured vehicles.
- Includes building related emissions of UN Secretariat offices located at the UNHQ complex, including New York based operations of DFS, DPA and DFND, and travel emissions financed by UNHQ entities (UNHQ business area S103). Excludes NY offices of UN Environment and non-Secretariat agencies (FAO, IAEA, ICSC, UNCCD, UNESCO, UNIDO, UNITAR and UNL).

- Includes building related emissions of all entities located at the Palais des Nations, and travel emissions of ICC, JIU, UNCTAD, UNDRR/UNISDR, UNHCR, UNICEF, UNISF and Geneva offices of OCHA, OIOS and UNDOA.
- Includes UN/WHO.
- Includes GEF, EFRD, IDA, ICSD, IFC and MIGA.
- Where available, previous data has been updated with emissions for 2015.

⁷GHG emissions excluding optional and biomass emissions

UN GHG EMISSIONS BY ENTITY





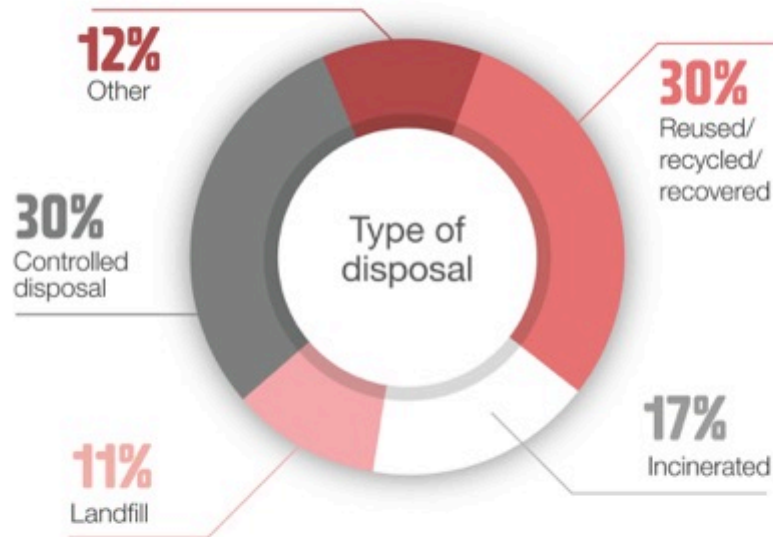
MEASURE:
WASTE



WASTE

For the second year in a row, UN entities have been invited to report on waste.

The waste data for 2016 covers 115,835 personnel over 316 sites, representing 52 UN entities.



Total per
capita
waste:

554 KG /personnel

WASTE IN UN ENTITIES – 2016



UN entity	Waste per capita (kg/person/annum)	Reused/ recycled/ composted/ recovered (%)	Incinerated closed (%)	Incinerated open (%)	Landfilled (%)	Controlled disposal (%)	Other (%)
BRS	160	95	0	0	0	0	5
CTBTO	148	39	0	0	0	0	61
ECA	992	1	0	0	0	94	5
ECLAC	403	13	0	0	86	1	0
ESCAP	100	25	0	0	75	0	0
ESCWA	94	39	0	0	56	0	5
FAO	215	41	2	0	53	0	4
Field Missions	677	25	9	11	9	33	13
IAEA	148	39	0	0	0	0	61
IFAD	177	76	0	0	15	0	9
ILO	525	36	0	0	0	0	64
IMO	482	73	0	0	27	0	0
ITC-ILO	696	72	0	0	3	25	0
IMF	455	71	0	0	29	0	0
ITU	316	38	58	0	1	3	0
OPCW	307	37	0	0	0	0	63
Ozone Secretariat	66	25	0	0	70	0	5
UNAIDS	215	93	2	0	0	0	5
UNCCD	108	100	0	0	0	0	0
UN Environment	102	63	0	0	32	0	5
UNESCO	634	7	7	0	2	79	5
UNFCCC	125	100	0	0	0	0	0
UNHQ	231	42	40	0	0	0	18
UNIDO	148	39	0	0	0	0	61
UNITAR	160	95	0	0	0	0	5
UNOG	253	96	0	0	0	1	3
UNON	378	11	0	0	84	0	5
UNOPS	174	41	0	3	32	8	16
UNOV	148	39	0	0	0	0	61
UNSSC	101	100	0	0	0	0	0
UNU	90	81	4	0	0	0	15
UNV	82	100	0	0	0	0	0
UNWTO	164	71	0	0	5	0	24
WFP	281	56	0	0	30	0	14
WHO	153	97	3	0	0	0	0
WIPO	349	100	0	0	0	0	0
WMO	106	99	0	0	0	0	1
World Bank Group	223	56	0	0	39	0	5
Total (UN-wide)	554	30	10	7	11	30	12



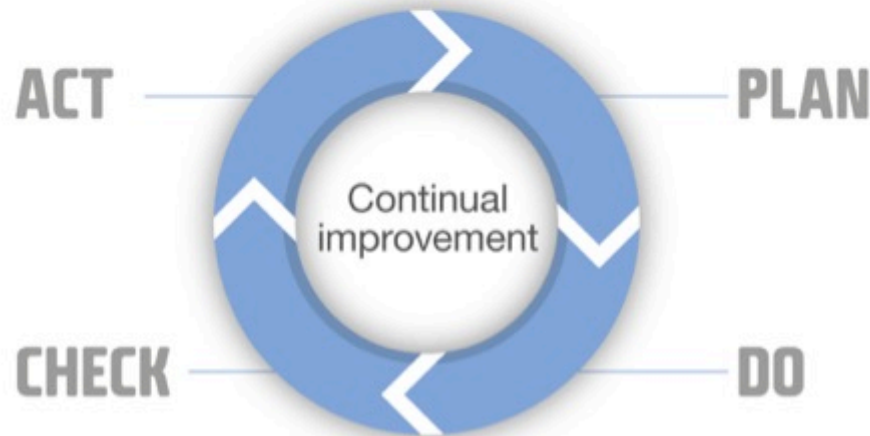
REDUCE:
ENVIRONMENTAL MANAGEMENT



ENVIRONMENTAL MANAGEMENT

Efforts are underway to manage the UN's environmental impacts wherever possible.

Having an environmental management system or a similar systematic approach to corporate environmental sustainability gives credibility and has the potential to help an organization achieve robust, continuous and long-term improvements in environmental performance.





OFFSET:
CLIMATE NEUTRALITY



OFFSETTING

The UN is committed to be climate neutral by 2020. Some UN system entities are already offsetting part or all of their emissions.

39

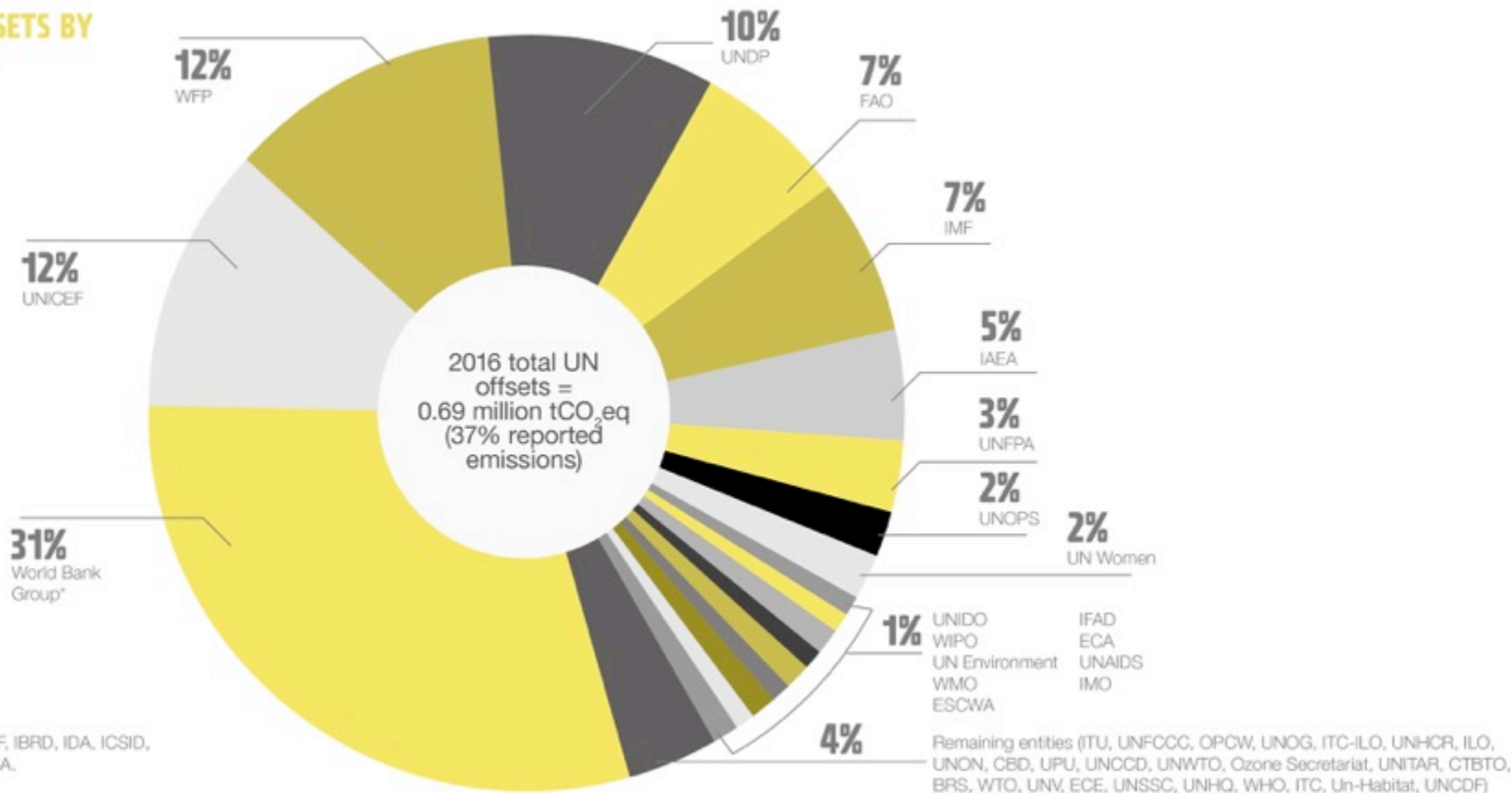
UN entities were climate neutral for 2016.



37%

of total reported greenhouse gas emissions were offset.

UN OFFSETS BY ENTITY



* Includes GEF, IBRD, IDA, ICSID, IFC and MIGA.

	MEASURE		REDUCE	OFFSET
	GREENHOUSE GAS EMISSIONS	WASTE	ENVIRONMENTAL MANAGEMENT	OFFSETTING
BRS	■	■		■
CBD	■	■	■	■
CTBTO	■	■		■
ECA	■	■		■
ECE	■	■	■	■
ECLAC	■	■		■
ESCAP	■	■	■	■
ESCWA	■	■	■	■
FAO	■	■	■	■
Field Missions ¹	■	■	■	■
IAEA	■	■		■
ICAO	■	■	■	■
IFAD	■	■		■
ILO	■	■	■	■
IMF	■	■		■
IMO	■	■		■
IOM	■	■	■	■
ITC	■	■	■	■
ITC-ILO	■	■		■
ITU	■	■		■
OHCHR	■	■		■
OPCW	■	■	■	■
Ozone secretariat	■	■	■	■
UNAIDS	■	■	■	■
UNCCD	■	■	■	■
UNCDF	■	■	■	■
UNDP	■	■	■	■
UN Environment	■	■	■	■
UNESCO	■	■		■
UNFCCC	■	■		■
UNFPA	■	■	■	■
UN-Habitat	■	■	■	■
UNHCR	■	■	■	■
UNHQ ²	■	■	■	■
UNICEF	■	■	■	■
UNIDO	■	■		■
UNITAR	■	■	■	■
UNOG ³	■	■		■
UNON	■	■		■
UNOPS	■	■	■	■

	MEASURE		REDUCE	OFFSET
	GREENHOUSE GAS EMISSIONS	WASTE	ENVIRONMENTAL MANAGEMENT	OFFSETTING
UNOV ⁴	■	■		■
UNRWA	■	■		■
UNSSC	■	■		■
UNU	■	■	■	■
UNV	■	■		■
UN Women	■	■		■
UNWTO	■	■		■
UPU	■	■		■
WFP	■	■	■	■
WHO	■	■	■	■
WIPO	■	■		■
WMO	■	■	■	■
World Bank Group ⁵	■	■	■	■
WTO	■	■		■

GREENHOUSE GAS EMISSIONS

- Entity reports greenhouse gas emissions for all of its personnel within the defined boundaries for the reporting year.
- ▣ Entity reports greenhouse gas emissions for a percentage of total personnel for the reporting year.
- Entity does not report on greenhouse gas emissions for the reporting year.

WASTE

- Entity reports quantitative data for some or all of its waste for the reporting year.
- ▣ Entity reports qualitative data for some or all of its waste for the reporting year.
- Entity does not report on waste for the reporting year.

ENVIRONMENTAL MANAGEMENT

- Entity is certified under an established system, i.e. ISO 14001, LEED, BREAM or equivalent, or is considered to have a complete environmental or sustainability management system covering at least headquarters or a majority of its personnel.
- ▣ Entity has other systematic approaches to environmental management, such as an approved Emission Reduction Strategy, Climate Neutral Strategy, Environmental Policy, or Sustainability Policy or an environmental management system underway – have policy and designated roles and responsibilities – in at least headquarters.
- Entity has no systematic approach to environmental management.

OFFSETTING

- Entity is climate neutral as a result of offsetting all reported greenhouse gas emissions for the reporting year.
- Entity is not climate neutral for the reporting year.

1. Field Missions (FM) (EP/OP/OPRO) refers to greenhouse operations, special political missions and support missions. It includes the emissions resulting from the use of air-sealed vehicles.
2. Includes building related emissions of UN Secretariat offices located at the UNHQ complex, including New York based operations of DPA, DPA and DPAC, and travel emissions from UNHQ entities (except business area (BAG)). Excludes NY offices of UN Environment and non-Secretariat agencies (FAO, IAEA, ICRC, UNCCD, UNESCO, UNIDO, UNITAR and UNLV).
3. Includes building related emissions of all entities located at the Palais des Nations, and travel emissions of I.L.E., UNCTAD, UNDRR, UNISDR, UNISF, UNLV, UNRISD & Geneva offices of CEB, OCHA, OIOS and UNODA.
4. Includes UNCCD.
5. Includes GEF, BRD, IDA, ICSD, IFD and MGA.

FOR MORE INFORMATION PLEASE VISIT

<http://bit.ly/GtB-report-2017-news>

TO DOWNLOAD THE FULL REPORT PLEASE VISIT

<http://bit.ly/GtB-resources>

FOR MORE INFORMATION PLEASE CONTACT

info@greeningtheblue.org