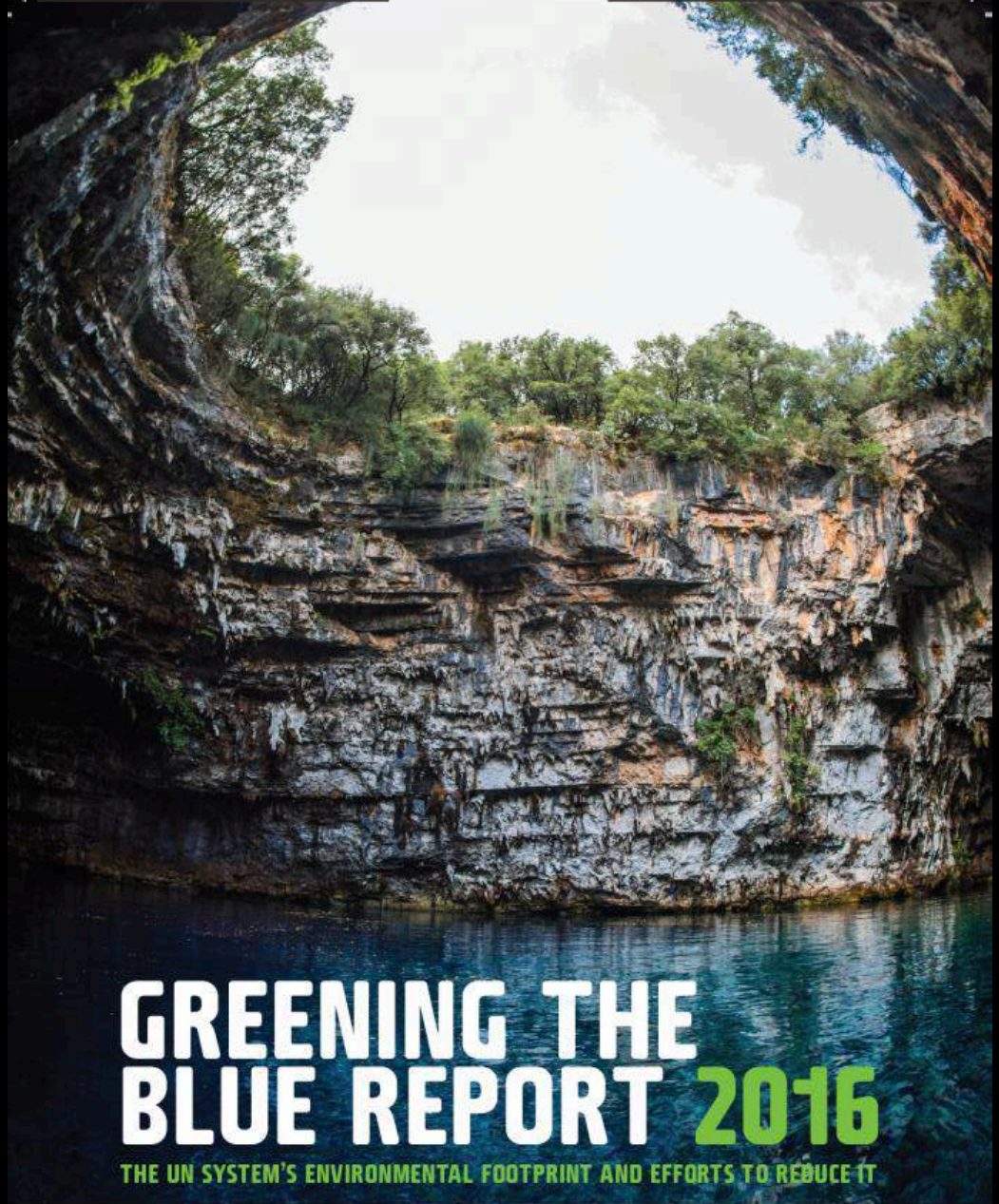


Greening the Blue Report *2016*

GREENING THE BLUE REPORT 2016

THE UN SYSTEM'S ENVIRONMENTAL FOOTPRINT AND EFFORTS TO REDUCE IT

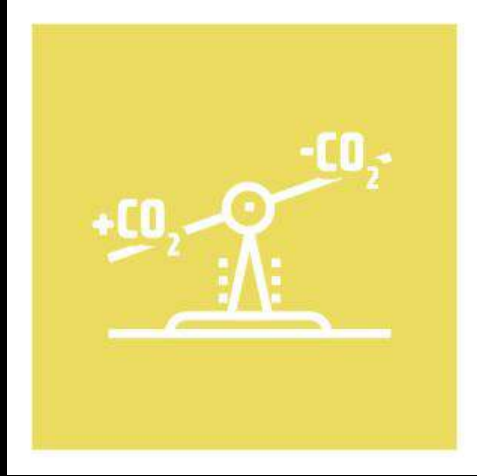
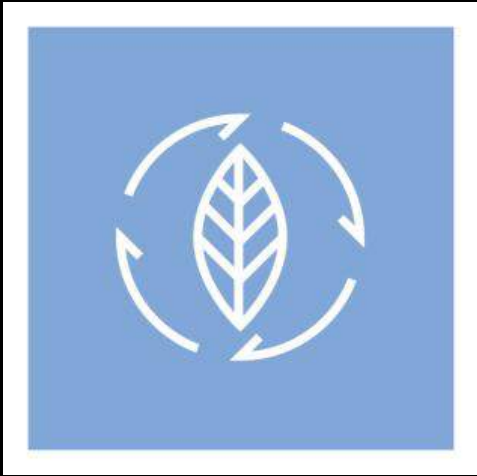
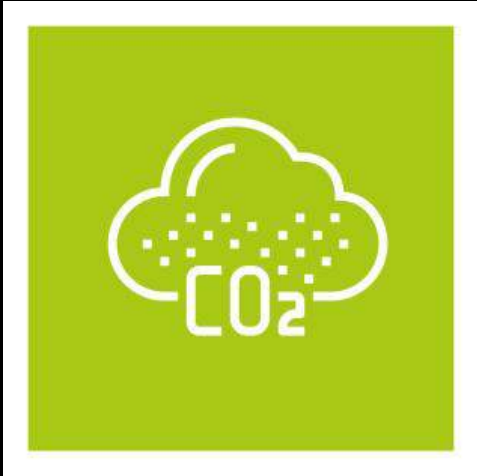




GREENING THE BLUE REPORT 2016

THE UN SYSTEM'S ENVIRONMENTAL FOOTPRINT AND EFFORTS TO REDUCE IT





GREENING THE BLUE REPORT 2016

THE UN SYSTEM'S ENVIRONMENTAL FOOTPRINT AND EFFORTS TO REDUCE IT

GREENHOUSE GAS EMISSIONS

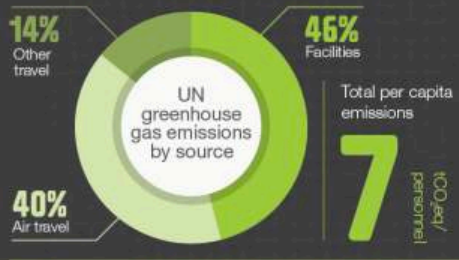


The UN first reported its greenhouse gas emissions in 2009, for 2008 emissions.

Total UN greenhouse gas emissions for 2015


2,041,135

CO₂eq




The emissions data covers 284,482 personnel, representing 66 UN system organizations.

SUSTAINABILITY INITIATIVES



Efforts are underway to manage the UN's environmental impacts wherever possible.

28 UN system entities are implementing systematic approaches such as environmental management systems to improve their environmental performance.



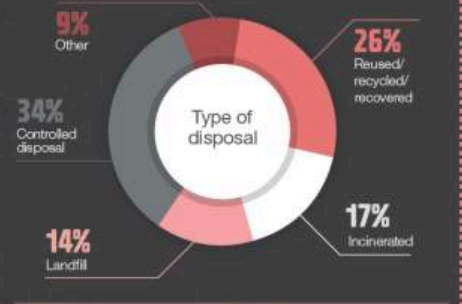
As I prepare to step down as Secretary-General, I am encouraged by how far we have come in 'walking the talk,' thanks to the enthusiasm of the staff of the United Nations for 'Greening the Blue'. I am pleased to see growing staff commitment to climate neutrality and sustainability in the workplace, as well as consistent support for initiatives such as World Environment Day and Earth Hour.

WASTE MANAGEMENT




In 2016, for the first time, UN system organizations were invited to report on waste management.

The waste data for 2015 covers 94,548 personnel over 174 sites, representing 42 UN entities.



Total waste per capita: **547 KG**

OFFSETTING



The UN is committed to be climate neutral by 2020. Some UN system entities are already offsetting part or all of their emissions.

32 UN entities were climate neutral for 2015





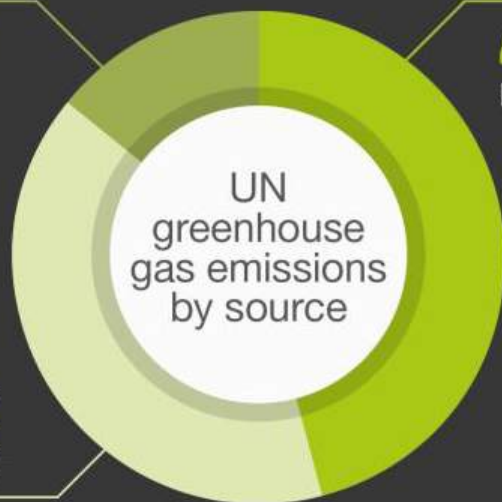
GREENHOUSE GAS EMISSIONS

The UN first reported its greenhouse gas emissions in 2009, for 2008 emissions.

Total UN greenhouse gas emissions for 2015

2,041,135 tCO₂e_q

14%
Other
travel



46%
Facilities

Total per capita
emissions

7 tCO₂e_q/
personnel

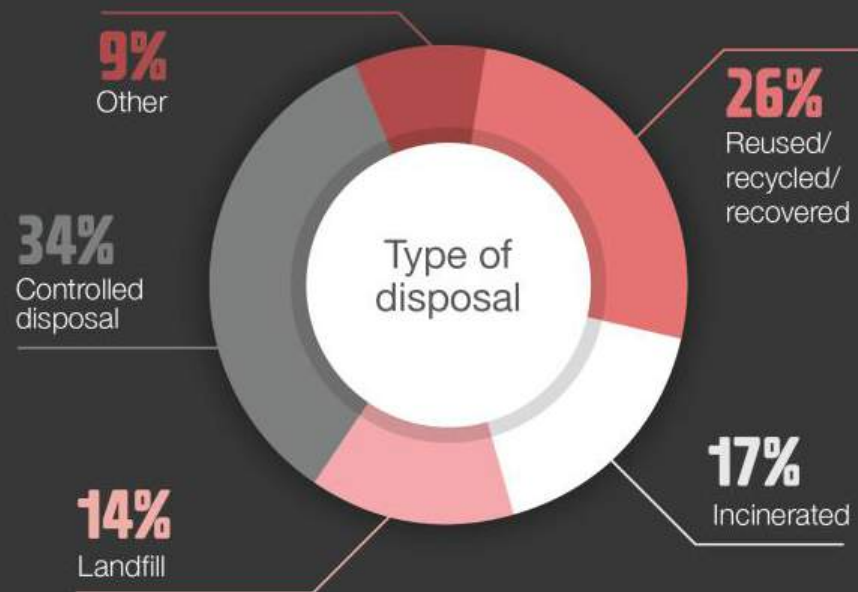
The emissions data covers 284,482 personnel, representing 66 UN system entities.



WASTE MANAGEMENT

In 2016, for the first time, UN system organizations were invited to report on waste management.

The waste data for 2015 covers 94,548 personnel over 174 sites, representing 42 UN entities.



Total waste per capita:

547 KG



SUSTAINABILITY INITIATIVES

Efforts are underway to manage the UN's environmental impacts wherever possible.

28

UN system entities are implementing systematic approaches such as environmental management systems to improve their environmental performance.



As I prepare to step down as Secretary-General, I am encouraged by how far we have come in 'walking the talk,' thanks to the enthusiasm of the staff of the United Nations for 'Greening the Blue'. I am pleased to see growing staff commitment to climate neutrality and sustainability in the workplace, as well as consistent support for initiatives such as World Environment Day and Earth Hour.



OFFSETTING

The UN is committed to be climate neutral by 2020. Some UN system entities are already offsetting part or all of their emissions.

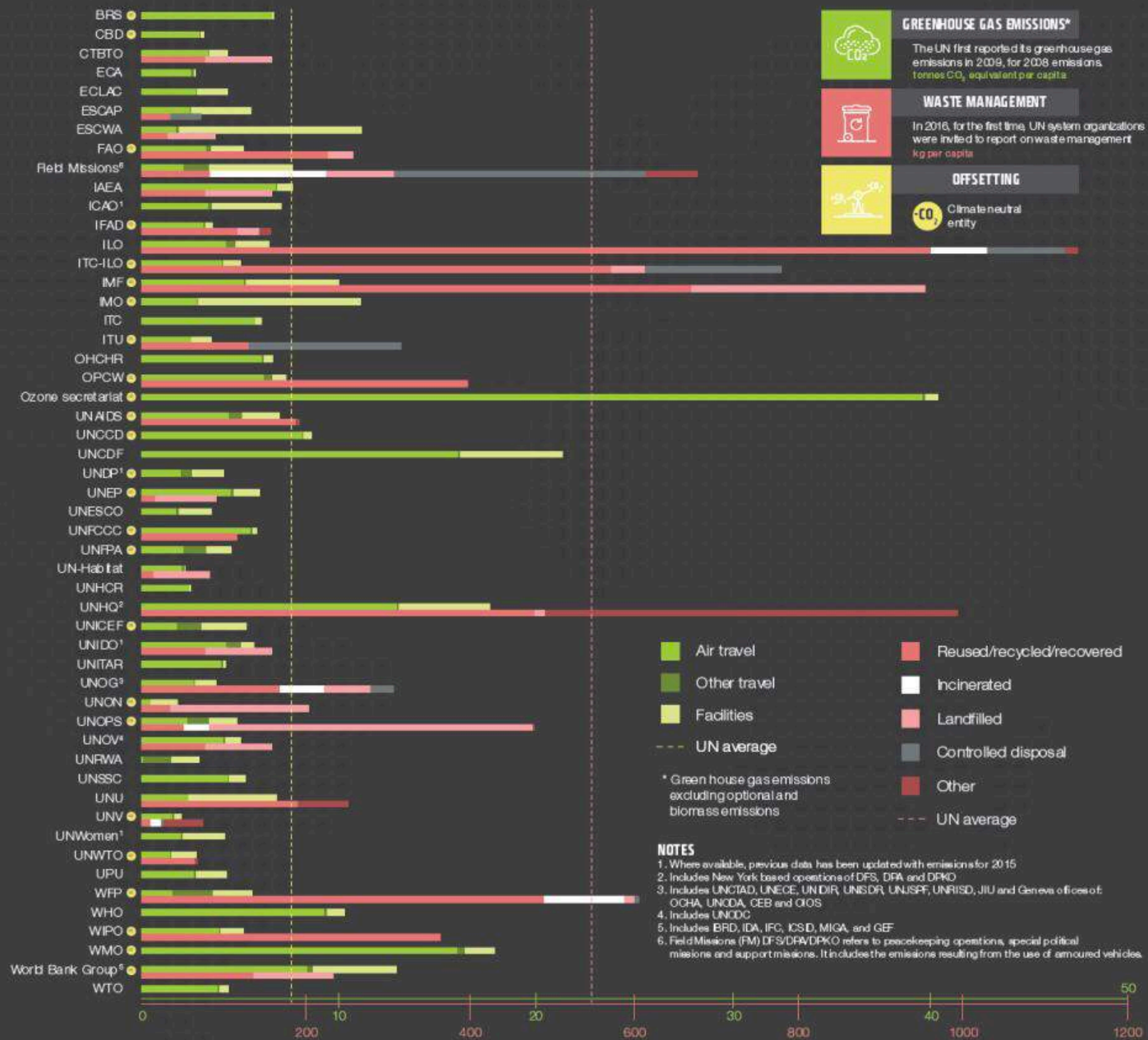
32

UN entities were climate neutral for 2015



**GREENING
THE BLUE.**

**GREENING
THE BLUE.** 





GREENHOUSE GAS EMISSIONS FROM UN ENTITIES - 2015

UN entity	Number of personnel (#)	Total emissions (tCO ₂ eq)	Per capita emissions (tCO ₂ eq/personnel)	Share of total emissions (%)			Facilities-related emissions intensity (kgCO ₂ eq/m ²)
				Facilities	Air travel	Other travel	
BRS	69	464	7	1	99	0	5
CBD	148	474	3	7	91	2	10
CTBTO	357	1,564	4	22	77	1	14
ECA	1,537	4,229	3	4	92	4	2
ECLAC	700	3,067	4	36	63	1	55
ESCAP	986	5,502	6	55	44	1	52
ESCWA	423	4,730	11	83	15	2	94
FAO	11,448	59,157	5	92	63	5	72
Field Missions ⁶	150,585	1,155,793	8	55	28	17	422
IAEA	2,772	21,255	8	11	89	0	14
ICAO ¹	807	5,735	7	50	48	2	67
IFAD	1,006	3,639	4	11	87	2	14
ILO	2,490	16,093	6	26	67	7	74
ITC-ILO	440	2,208	5	18	81	1	11
IMF	4,550	45,523	10	47	52	1	78
IMO	339	3,762	11	74	25	1	118
ITC	420	2,569	6	5	95	0	16
ITU	957	3,403	4	29	70	1	20
OHCHR	600	3,991	7	7	92	1	15
OPCW	481	3,541	7	10	84	6	15
Ozone Secretariat	18	727	40	2	98	0	54
UNAIDS	832	5,847	7	27	63	10	42
UNCCD	61	526	9	5	94	1	5
UNDP ¹	16,445	68,391	4	39	47	14	75
UN Environment	1,319	7,919	6	23	75	2	71
UNESCO	6,282	22,300	4	47	50	3	41
UNFCCC	570	3,333	6	4	94	2	4
UNFPA	3,886	17,686	5	28	47	25	52
UN-Habitat	441	975	2	2	92	6	3

UN entity	Number of personnel (#)	Total emissions (tCO ₂ eq)	Per capita emissions (tCO ₂ eq/personnel)	Share of total emissions (%)			Facilities-related emissions intensity (kgCO ₂ eq/m ²)
				Facilities	Air travel	Other travel	
UNHCR	900	2,252	3	3	95	2	4
UNHQ ²	4,683	82,833	18	26	73	1	67
UNICEF	16,053	85,219	5	43	34	23	62
UNIDO ¹	2,166	12,414	6	12	75	13	13
UNITAR	85	365	4	4	95	1	10
UNOG ³	2,762	10,472	4	29	70	1	18
UNON	791	1,468	2	76	23	1	33
UNOPS	3,422	16,509	5	29	48	23	67
UNOV ⁴	1,148	5,799	5	16	82	2	14
UNRWA	4,412	13,044	3	50	3	47	79
UNSSC	31	164	5	16	82	2	14
UNU	149	1,024	7	66	34	0	103
UNV	150	306	2	19	77	4	6
UN Women ¹	718	3,045	4	51	47	2	121
UNWTO	174	483	3	45	52	3	35
WFP	14,840	83,753	6	36	28	36	14
WHO	2,211	22,820	10	9	89	2	19
WIPO	1,491	7,731	5	23	76	1	26
WMO	340	6,096	18	9	89	2	14
World Bank Group ⁵	15,847	205,204	13	33	65	2	90
WTO	845	3,722	4	10	87	3	9
Entities reporting emissions prior to 2015 (reporting year in brackets)							
UNCDF (2013)	43	918	21	24	75	1	182
UPU (2014)	252	1,091	4	37	61	2	33
UN System	284,482	2,041,135	7	46	40	14	113

Climate neutral agencies

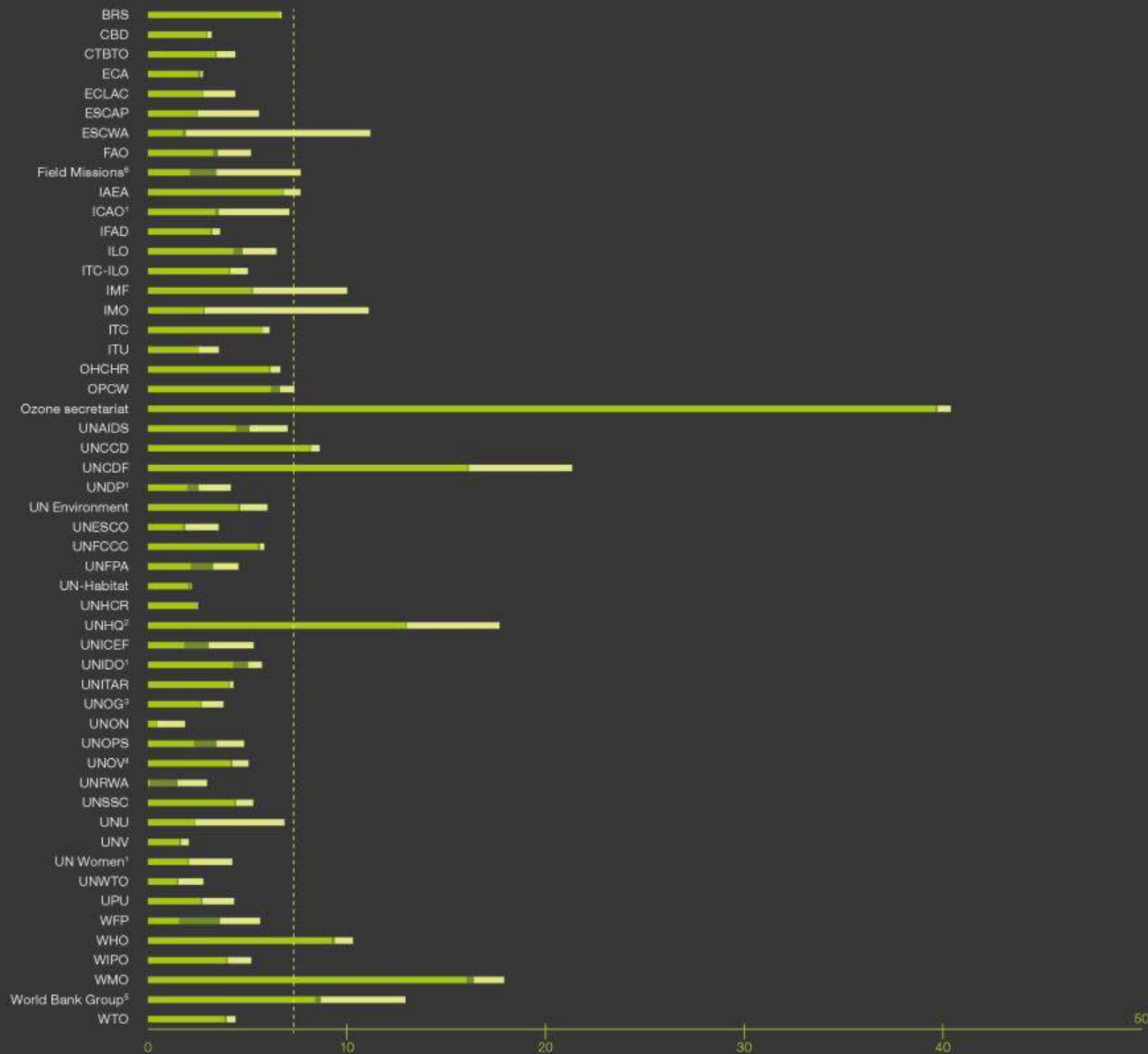
- Where available, previous data has been updated with emissions for 2015
 - Includes New York based operations of DFS, DPA and DPKO
 - Includes UNCTAD, UNECE, UNIDIR, UNISDR, UNJSPF, UNRISD, JIU and Geneva offices of: OCHA, UNODA, CEB and OIOS
 - Includes UNODC
 - Includes IBRD, IDA, IFC, ICSID, MIGA and GEF
 - Field Missions (FM) DFS/DPA/DPKO refers to peacekeeping operations, special political missions and support missions. It includes the emissions resulting from the use of armoured vehicles.
- ⁶GHG emissions excluding optional and biomass emissions



WASTE MANAGEMENT IN UN ENTITIES – 2015

UN entity	Waste per capita (kg/person/annum)	Reused/ recycled/ composted/ recovered (%)	Incinerated closed (%)	Incinerated open (%)	Landfilled (%)	Controlled disposal (%)	Other* (%)
CTBTO	159	49	0	0	51	0	0
ESCAP	73	48	0	0	0	52	0
ESCWA	90	35	0	0	65	0	0
FAO	257	88	0	0	12	0	0
Field Missions	677	12	1	20	12	45	10
IAEA	159	49	0	0	51	0	0
IFAD	157	74	0	0	17	0	9
ILO	1140	84	6	0	0	8	2
ITC-ILO	779	74	0	0	5	21	0
IMF	955	70	0	0	30	0	0
ITU	316	41	58	0	0	1	0
OPCW	398	100	0	0	0	0	0
UNAIDS	192	98	0	0	0	0	2
UN Environment	91	18	1	0	81	0	0
UNFCCC	117	100	0	0	0	0	0
UN Habitat	83	17	0	0	83	0	0
UNHQ	998	48	0	0	1	0	51
UNIDO	159	49	0	0	51	0	0
UNOG	307	55	18	0	18	9	0
UNON	203	17	0	0	83	0	0
UNOPS	478	11	7	0	82	0	0
UNOV	159	49	0	0	51	0	0
UNU	252	76	0	0	0	0	24
UNV	75	14	18	0	0	4	64
UNWTO	69	95	0	0	0	0	5
WFP	606	81	16	0	2	1	0
WIPO	364	100	0	0	0	0	0
World Bank Group	233	58	0	0	42	0	0
Total (UN wide)	547	26	2	15	14	34	9

*Includes unknown quantities, the majority of which are due to the lack of information provided by waste handlers, as well as small proportions stored on site and disposed in an uncontrolled manner



GREENHOUSE GAS EMISSIONS*

The UN first reported its greenhouse gas emissions in 2009, for 2008 emissions. **tonnes CO₂ equivalent per capita**

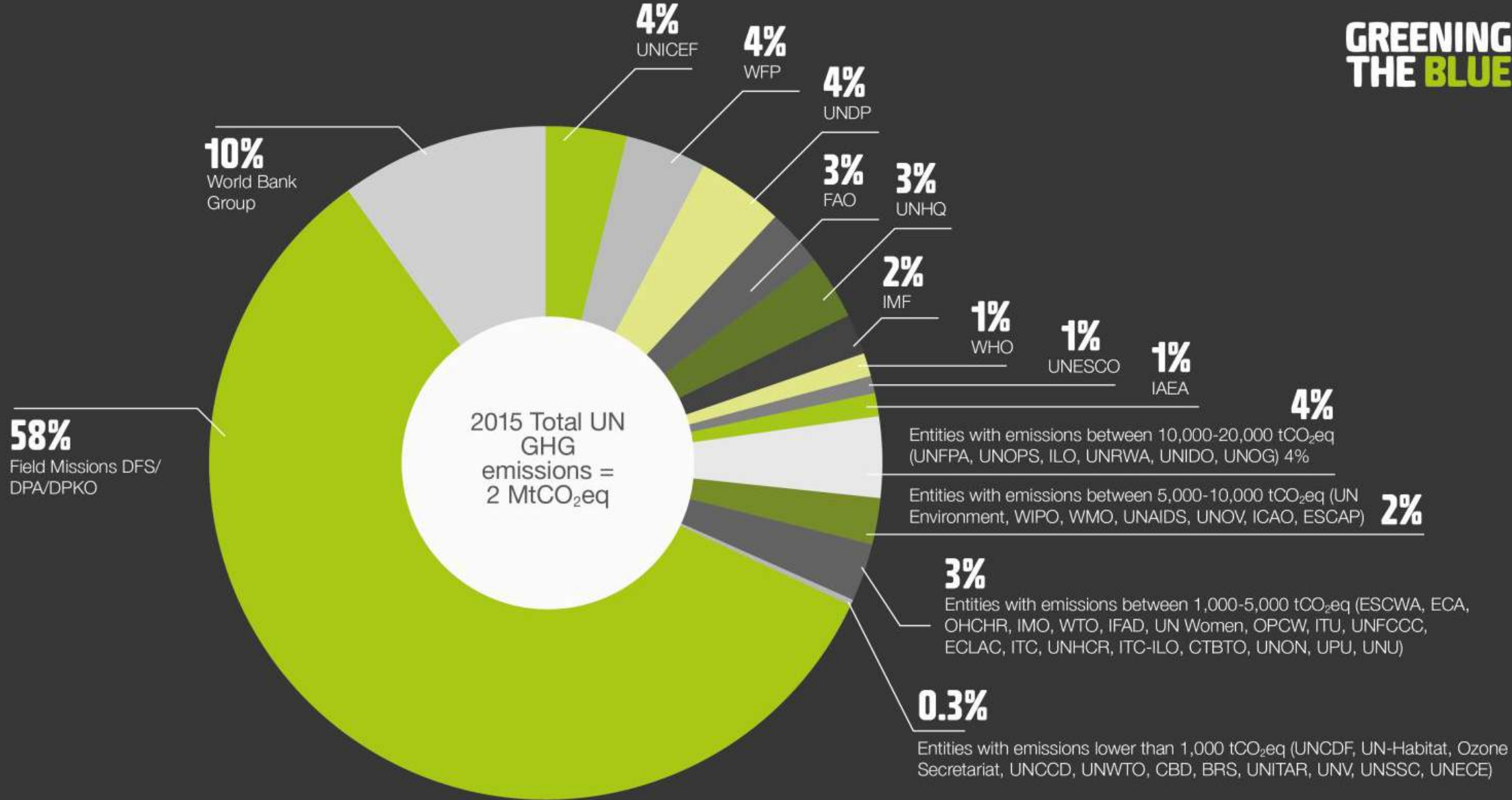
- Air travel
- Other travel
- Facilities
- UN average

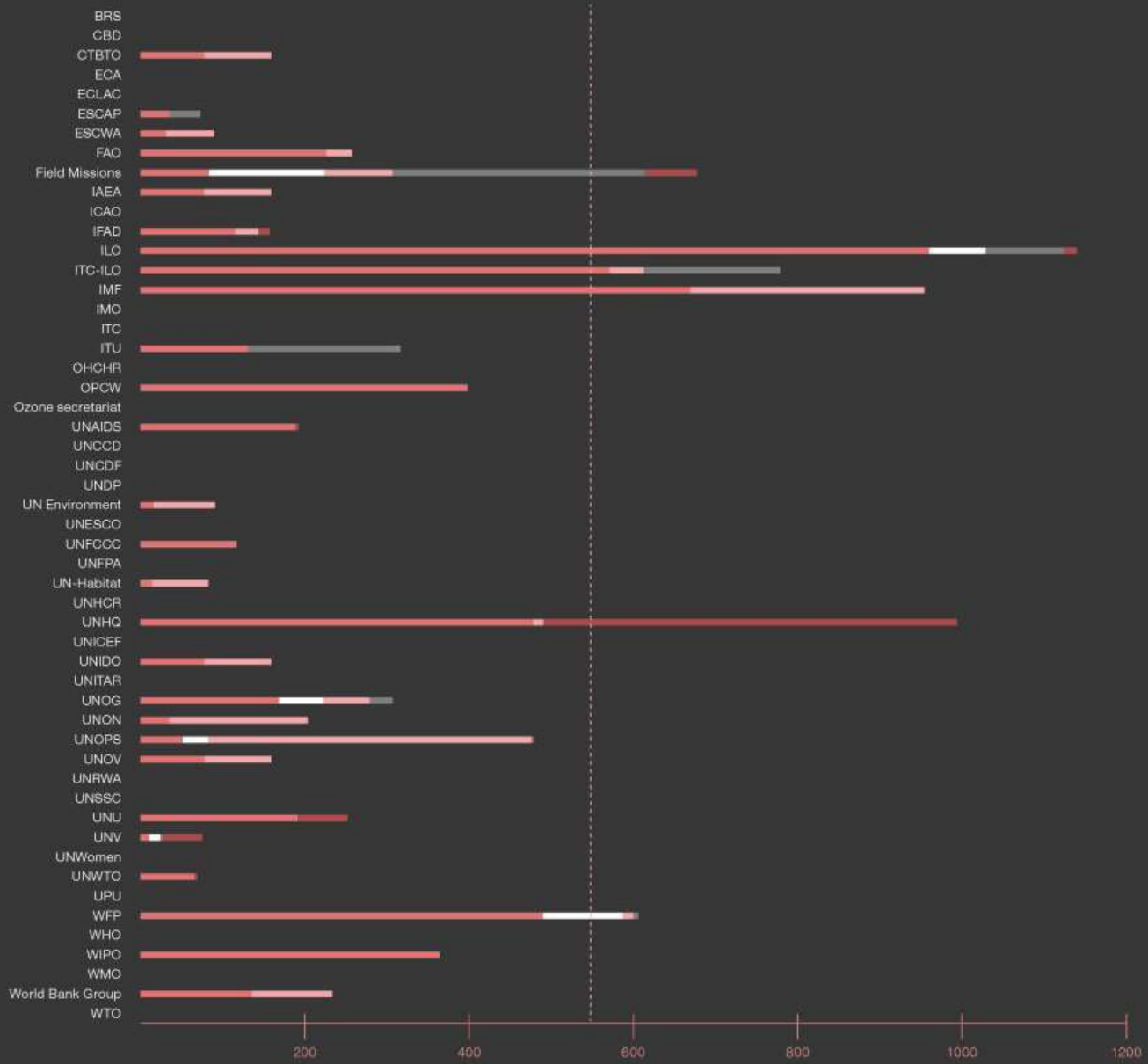
*Greenhouse gas emissions excluding optional and biomass emissions

NOTES

1. Where available, previous data has been updated with emissions for 2015
2. Includes New York based operations of DFS, DPA and DPKO
3. Includes UNCTAD, UNECE, UNIDIR, UNISDR, UNJSPF, UNRISD, JIU and Geneva offices of: OCHA, UNODA, CEB and OIOS
4. Includes UNODC
5. Includes IBRD, IDA, IFC, ICSID, MIGA, and GEF
6. Field Missions (FM) DFS/DPA/DPKO refers to peacekeeping operations, special political missions and support missions. It includes the emissions resulting from the use of armoured vehicles.

**GREENING
THE BLUE.**





WASTE MANAGEMENT

In 2016, for the first time, UN system organizations were invited to report on waste management kg per capita

- Reused/recycled/recovered
- Incinerated
- Landfilled
- Controlled disposal
- Other
- - - UN average

