

TITLE  
**PWHG.5x2.5x3-50**

DRAWN BY C.Larkin	DATE 23/05/2024
----------------------	--------------------

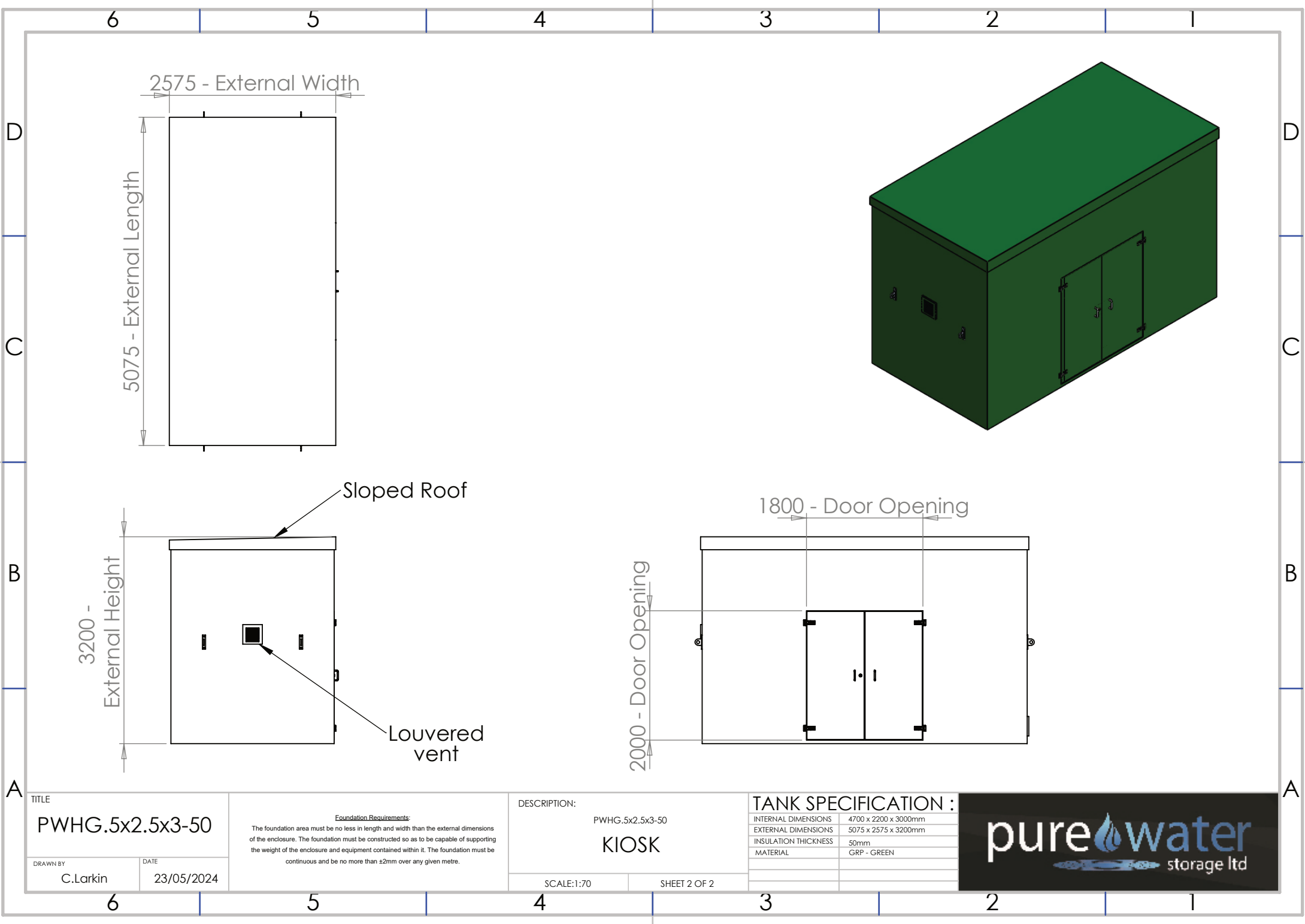
**Foundation Requirements:**  
The foundation area must be no less in length and width than the external dimensions of the enclosure. The foundation must be constructed so as to be capable of supporting the weight of the enclosure and equipment contained within it. The foundation must be continuous and be no more than ±2mm over any given metre.

DESCRIPTION:  
**PWHG.5x2.5x3-50**  
**KIOSK**

SCALE:1:70	SHEET 1 OF 2
------------	--------------

TANK SPECIFICATION :	
INTERNAL DIMENSIONS	4700 x 2200 x 3000mm
EXTERNAL DIMENSIONS	5075 x 2575 x 3200mm
INSULATION THICKNESS	50mm
MATERIAL	GRP - GREY





TITLE	
PWHG.5x2.5x3-50	
DRAWN BY	DATE
C.Larkin	23/05/2024

**Foundation Requirements:**  
The foundation area must be no less in length and width than the external dimensions of the enclosure. The foundation must be constructed so as to be capable of supporting the weight of the enclosure and equipment contained within it. The foundation must be continuous and be no more than ±2mm over any given metre.

DESCRIPTION:	
PWHG.5x2.5x3-50	
KIOSK	
SCALE:1:70	SHEET 2 OF 2

TANK SPECIFICATION :	
INTERNAL DIMENSIONS	4700 x 2200 x 3000mm
EXTERNAL DIMENSIONS	5075 x 2575 x 3200mm
INSULATION THICKNESS	50mm
MATERIAL	GRP - GREEN

