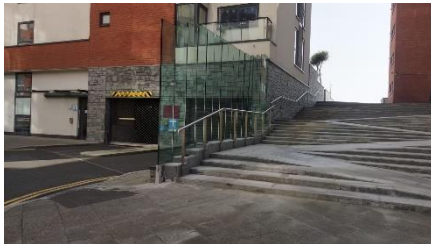


# Directions

## 65 Meridian Tower, Trawler Road, Swansea. SA1 1JN



**Car Park – Trawler Road, Meridian Bay, (Underground Parking is accessible with your key fob)**



**The entrance to your apartment is accessible via concierge at Meridian Tower**  
(Accessible with key fob)

### **Directions:**

#### From M4 J42

- Exit onto **A483** towards Swansea/Abertawe
  - Keep left to continue towards Fabian Way/**A483**
  - Merge onto Fabian Way/**A483**
  - Continue onto Quay Parade/**4067** and continue to follow A4067
  - Turn left onto Dunvant Pl, go ahead across the next roundabout
  - Continue onto Trawler Road, Destination/**Apartment** is on your left (**Tall White Tower**) just before the Co-op Store and close to Dawsons Estate Agents.
  - **Your allocated parking space is number 98 level - 1. (Maximum Height 2.1 Meters).** Your allocated parking is located opposite at Meridian Bay.
  - **To exit the carpark safely**, directly opposite your assigned space, up the immediate ramp, you will find a door on your left labelled 'Apartments 91-107'. Your grey fob will open the door and lead to a lift. Exit the lift on level 0 and use the stairs to exit at street level. You can re-enter the carpark the same way again using the grey fob.
  - Please avoid walking up the carpark's entry/exit ramp for your safety
  - You can access the apartment from the front entrance of the tower as shown in the photograph to the left.
  - Your apartment is located on the 11<sup>th</sup> floor, Number 65
- 
- **Parking for larger vehicles**, in the assigned spaces, at the Meridian Quay can be challenging. Please be careful when manoeuvring your vehicle. Alternative open-air public car parks are close by if you would prefer to use them, although charges apply.

**WHEN YOU CHECK-IN PLEASE NOTIFY OUR OFFICE: 01792 343905**

**IF YOU NEED ANY ASSISTANCE, PLEASE LET US KNOW.**