

TRAMIGO SOLUTIONS

TRAMIGO BCPTT COMPLETE SOLUTION

MISSION-CRITICAL BODY CAMERA
WITH PUSH-TO-TALK



CRYSTAL-CLEAR
SOUND QUALITY



FULL HD
CAMERA



EMERGENCY
FUNCTIONALITIES



ENCRYPTED
COMMUNICATION



CENTRALIZED
MANAGEMENT

TRAMIGO BCPTT

PROFESSIONAL ALL-IN-ONE SOLUTION

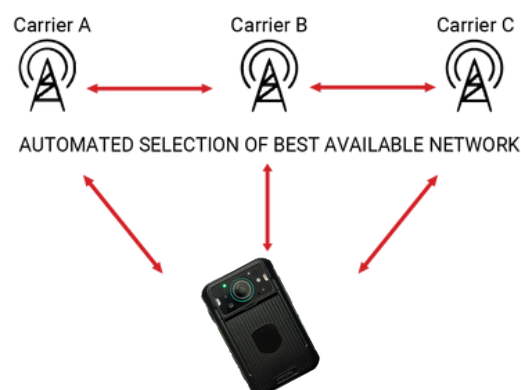
Tramigo BCPTT is a rugged, mission-critical body camera designed for real-time communication and evidence recording. Including built-in Push-to-Talk over Cellular, it enables seamless voice communication with multi-network connectivity for uninterrupted coverage. With high-definition video recording, GPS tracking, and protected conversations, BCPTT ensures reliable security for law enforcement, security teams, and field operations. Integrated with Tramigo's centralized management platform, it is an essential tool for professionals who require both real-time coordination and secure documentation.



BCPTT WITH MULTI-NETWORK CONNECTIVITY

Tramigo BCPTT solution with multi-network SIM and regional coverage, works in 2G, 3G, 4G, 5G and LTE-M networks to ensure the most safe and reliable connection. The low-latency software ensures voice crystal clear quality.

Tramigo multi-network connectivity ensures that your PTT device will always connect to the best network making the coverage better and stronger.



KEY FEATURES



Secure with AES-256 encryption



Multi-network connectivity



Full HD video recording



Designed for multiple users, both private and group calls



Emergency functionality - SOS button



Embedded GPS module enables tracking and geofencing



Dual SD card slots



PIN protection for device and SD card storage

TRAMIGO BCPTT ACCESSORIES

STANDARD ACCESSORIES

- Adapter
- Type-C cable
- Belt clip



TECHNICAL DATA

Size	90*59*26.25mm
Weight	190g with Belt clip
CPU	MTK8766, Quad Cores 2.0GHz (8 cores optional)
Display	2.4 inch touchable screen
Keys	Power switch ,record, video, PTT, PIC, SOS
Waterproof	IP66
OS	Android13
Battery	3050 mAh
Speaker	waterproof 2.5W, double MIC

Wi-Fi	2.4/5G WIFI
Bluetooth	BT5.0 (BR/EDR+BLE , A2DP)
Data	GPRS/EDGE/HSPA/CAT4 LTE
Opto-sensor	Support
Storage	2GB+16GB
SD card	2 slots; 512GB/slot
I/O interface	16pin, type C chargeable, firmware upgrade, data transfer, OTG 5V output
Light	Flashing, 2 infrared night version, red & blue indicator
G-Sensor	Support

3GPP	GSM/TD-SCDMA/WCDMA/CDMA2000/TDD-LTE/FDD-LTE		
Frequency	2G	GSM	B2/B3/B5/B8
	3G	TD-SCOMA	B34/B39
		WCDMA	B1/B2/B5/B8
	4G	TDD-LTE	B34/B38/B39/B40/B41 M
		FDD-LTE	B1/B2/B3/B4/B5/B7 /B8/B/12/B 17 /B20

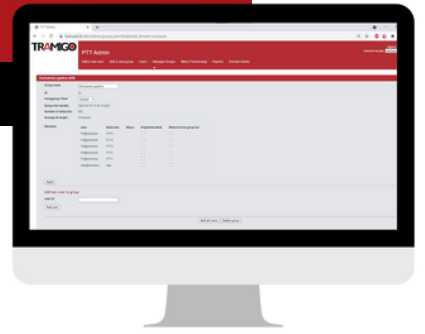
TRAMIGO MCPTT WEB-ADMIN

CENTRALISED DEVICES ADMINISTRATION

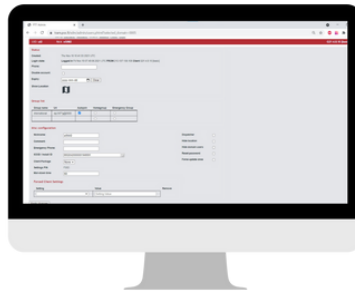
Tramigo Web-Admin allows provisioning and administration either manually or over SOAP-protocol (automated). Its user-friendly interface simplifies activation for end-users.

KEY FEATURES

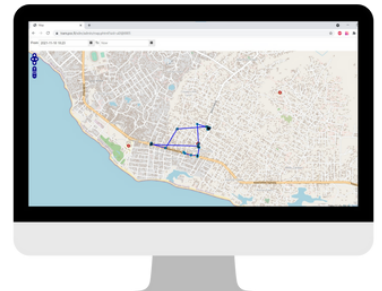
- Add and remove users
- Add, modify and remove groups
- Mass provisioning
- Mass removal
- Check group status



Admin panel for managing and creating groups with users



Managing users profile



Location reports of the PTT

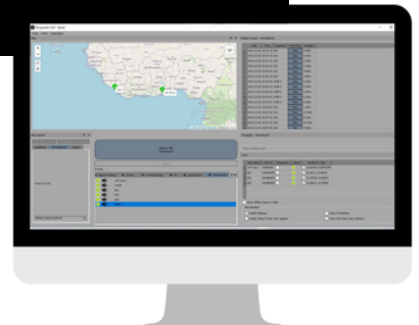
TRAMIGO MCPTT DISPATCHER

CENTRALISED WINDOWS COMMUNICATION

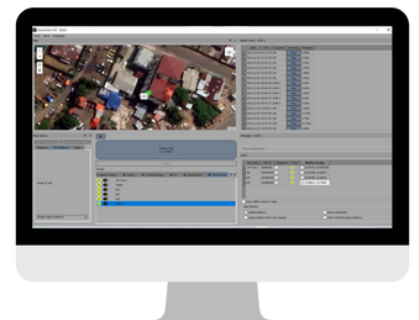
The MCPTT dispatcher offers large and multi-display dispatchers for terminals and other wide spaces. Audio in/out and text input can be integrated using standard devices and connections, including wired and bluetooth.

KEY FEATURES

- Group and private text
- Geofence
- Member status
- Location services
- Play-back call history
- Multiple groups
- Works on all IP networks
- Compatible with Android and Widows



Playback history to previous conversations with locations



Live tracking
Satellite view map
View users online/offline
Controlling groups and users under one domain