



**CONWAYS
COMMERCIAL**
PROPERTY CONSULTANTS



TO LET

www.conwayscommercial.co.uk

01865 302610

The logo consists of a white stylized 'C' inside a circle, with a smaller 'C' inside the first 'C', creating a concentric effect.

**CONWAYS
COMMERCIAL**
PROPERTY CONSULTANTS

Oxford House, Parkway Court, John Smith Drive,
Oxford Business Park, Oxford OX4 2JY

Contact: Martin Conway
Tel: 01865 302610
Email: martin@conwayscommercial.co.uk

www.conwayscommercial.co.uk

Conways Commercial for itself and as agent for the vendor or lessor (as appropriate) gives notice that:

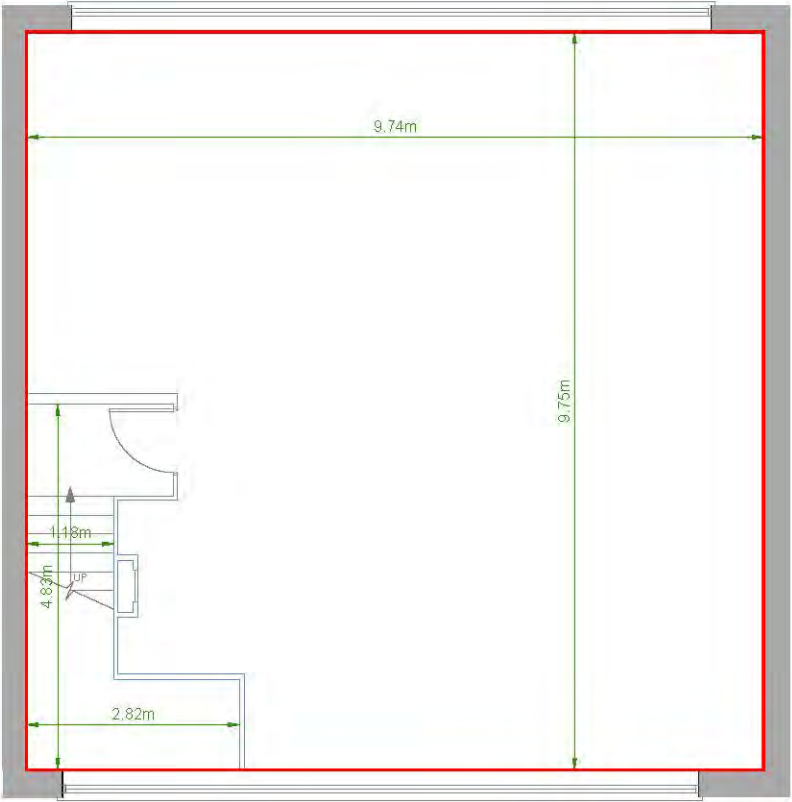
1. These particulars are only a general outline for the guidance of intending purchasers or lessees and do not constitute in whole or in part an offer or a Contract.
2. Reasonable endeavours have been made to ensure that the information given in these particulars is materially correct, but any intending purchaser or lessee should satisfy themselves by inspection, searches, enquiries, and survey as to the correctness of each statement.
3. All statements in these particulars are made without responsibility on the part of Conways Commercial or the vendor or lessor. No statement in these particulars is to be relied upon as a statement or representation of fact.
4. Neither Conways Commercial nor anyone in its employment or acting on its behalf has authority to make any representation or warranty in relation to this property.
5. Amounts quoted are exclusive of VAT if applicable. Interested parties should take independent advice as to the VAT position of this property.
6. Any areas, measurements or distances are only approximate and are given without responsibility.

SUBJECT TO CONTRACT DATE:

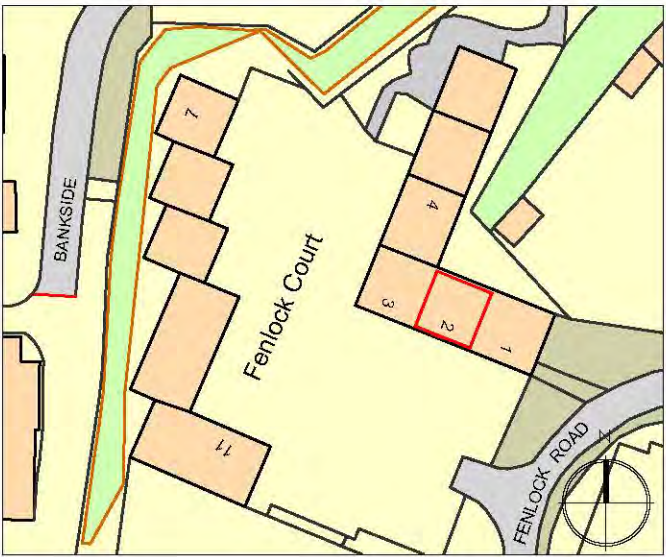


**CONWAYS
COMMERCIAL**
PROPERTY CONSULTANTS





FIRST FLOOR OFFICE



LOCATION PLAN SCALE 1:1250



UNIT 2
ENTRANCE

GROUND FLOOR SERVICES



drawing address
UNIT 2, BLENHEIM BUSINESS PARK
LONG HANBOROUGH, OXON
OX29 8LN