

MRU

Motorised Relay Unit

24v Vent Control

PLEASE READ IMPORTANT INFORMATION



Welco Engineering Ltd

Unit 7a - 7c, Vale Road,
Spilsby, Lincolnshire,
PE23 5HE
Tel: 01673 857575

HEALTH AND SAFETY AT WORK



DANGER
ELECTRIC SHOCK RISK

ELECTRIC DEVICES CAN CONSTITUTE A SAFETY HAZARD

It is the responsibility of the user to ensure that the installation and maintenance of the product are carried out in strict compliance with any relevant instructions, regulations, codes of practice or bylaws in force.

This equipment should only be installed and commissioned by appropriately qualified personnel who have read and fully understood this users manual. If in doubt contact your supplier or Welco Engineering Ltd. for technical advice.

Every care has been taken to ensure that the contents of this instruction booklet are accurate , however no liability is accepted for any consequence of its use.

The manufacturers reserve the right to revise the product specification and other technical features resulting from improvement and continual development.

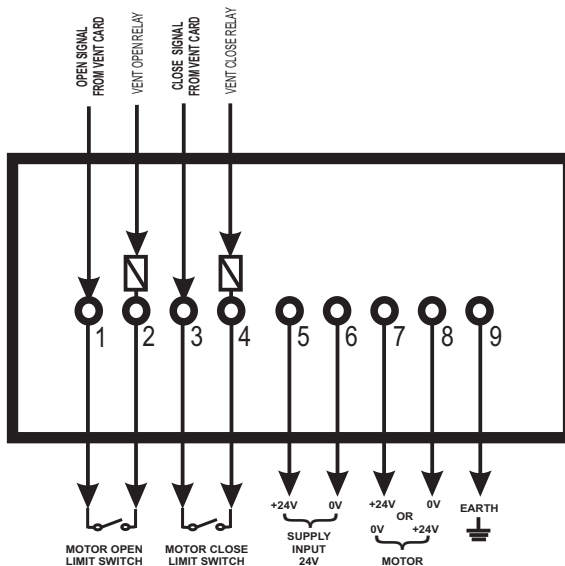
MRU MOTOR RELAY UNIT

| | |
|----------------------------|----------------------------------|
| Supply | 24V 10A d.c 250w |
| Output Supply..... | 24v.d.c. 10a to drive motor |
| Direction Control | RelayContacts |
| Drive Contact Rating | 24v d.c. 20a |
| Drive Signal..... | 24v d.c |
| Enclosure | IP 55 180x230x65mm Polycarbonate |

DESCRIPTION

The 24v d.c input drive signal from the Welco Engineering **stick** controller or alternative equipment activates the appropriate relay within the MRU when the given relay is energised the 24v d.c. Supply is switched to the motor by the relay contacts. There are two mini relays installed to prevent an open and closed Signal being employed at the same time. To prevent the drive motor from traversing beyond set limits the motor limit switches are connected in series with the input drive signal to the MRU relay coils as the diagram below shows

MRU CONNECTIONS



WARNING

When switching ON the supply to this unit, ensure that the motor opening and closing limit switches are set correctly and the motor is rotating in the required direction. The motor direction is simply Reversed by reversing the motor connections to terminal 7 and 8 on the terminal blocks

INSTALLATION

The MRU should be installed adjacent to the vent drive motor to prevent excessive voltage drop on Wiring.

Welco Engineering Ltd.

For over 40 year's Welco Engineering Ltd. have specialised in the design, manufacture and installation of state of the art electrical and electronic control systems and equipment for agriculture and industry.

The company offers large comprehensive range of standard manufactured products to satisfy the majority of environmental control requirements, and a service to build to customers specific requirements.

Welco Engineering Ltd., also offer a consultancy service, based on engineers considerable knowledge and expertise in resolving the many environmental problems associated with intensive livestock production units.

Welco PRODUCT RANGE

- ☐ Fan Speed Controllers.
- ☐ Automatic Fan Controllers with switched Heater Interlocks.
- ☐ Electronic Sequential fan Controllers.
- ☐ PRESCON 2 Digital Air-Pressure controller.
- ☐ Lighting Control Systems.
- ☐ Total Refurbishment Programmes.
- ☐ Maintenance Contracts.

Welco Engineering Ltd.

- ☐ **Welco MICROLIGHT**
"Dawn to Dusk" Conrols
- ☐ High and Low Temperature Alarms
- ☐ Supply failure Alarms
- ☐ Alarm Monitoring Systems
- ☐ Magnetically Held Door Control Systems
- ☐ MICRO-STAT Digital Thermostat.
- ☐ MICRO-TIMER Digital Cycle Timer.
- ☐ Transducers, Sensors and Thermostats.
- ☐ Vent Drive Motors/ linear Actuators and Power Supplies
- ☐ STICK Microcomputer Total Environment Controller

For further details of any product or service please do not hesitate to contact us:-

Unit 7a - 7c, Vale Road,
Spilsby, Lincolnshire,
PE23 5HE
Tel: 01673 857575