



Contacts

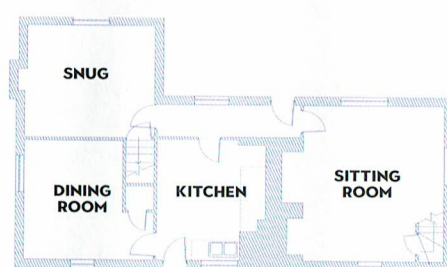
Architect Rider Sale, 01223
264436, ridersale.co.uk
Construction Taylor
Builders, 07976 326444

Above A quirky low window allows for views while in bed. 'Every single window in the house is a different size and we had to replicate what was there before,' says Stephanie. 'Luckily the planners allowed us to install double glazing so it's more energy efficient.'

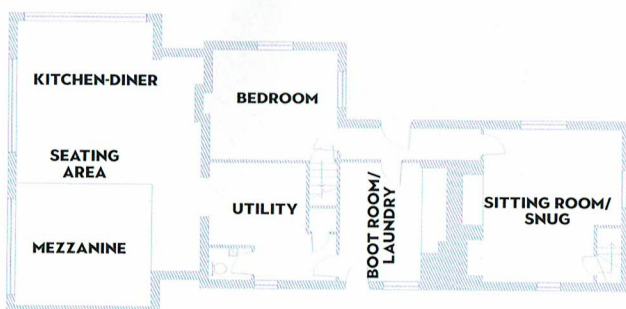
Bed, Made. Bedside tables, Habitat. Lamps, Rockett St George. Duvet cover, La Redoute. Cushions and throw, H&M. Blind, Hillarys

THE PLANS

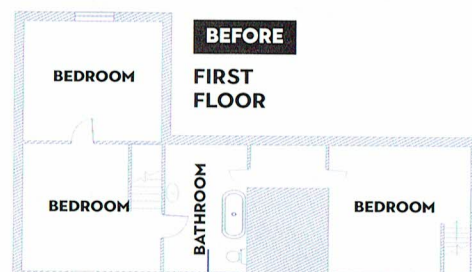
BEFORE
GROUND FLOOR



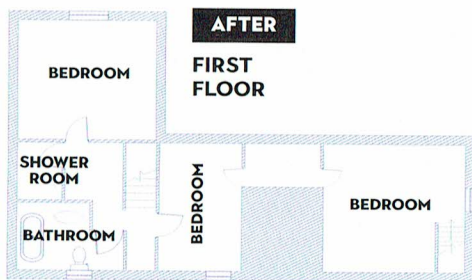
AFTER
GROUND FLOOR



BEFORE
FIRST FLOOR



AFTER
FIRST FLOOR



Below A wall-hung vanity unit and simple monochrome design makes the most of a compact bathroom. Raising a section of the floor allows for pipework to be hidden.

Bath, Soak. Tiles, Tile Shack Direct. Vanity unit and basin, Willesden Bathrooms. Tap, Ebay. Yes print, What Phil Sees. Mirror, Homebase. Bath bridge, The Bath Tray Company. Towels, H&M

Right Millie and Phoebe love their new bedroom, which has its own separate staircase off the snug and an interconnecting door to Alfie's bedroom, linking it to the rest of the first floor.

Beds, La Redoute. Wall decals, Parkins Interiors. Fruit prints, Ikea. Bedding and rainbow cushions, H&M



TOP TIP

Experiment with coloured grouting to match your scheme. It also won't show discolouration like white grout



Above Previously an avocado bathroom suite, Alfie's cosy bedroom now has a simple monochrome scheme, while the new bathroom is across the landing next to the master bedroom. 'When we moved in, he was disappointed that his room didn't have a toilet in it anymore,' laughs Stephanie.

Bed, La Redoute. Bedlinen, Primark. Rug, H&M