



**SOBHA HARTLAND**

**GARDEN HOUSES**

**FLOOR PLANS**

27  
contemporary  
masterpieces

at the heart of Dubai's most  
distinguished borough

SIZE RANGE

3,233 - 3,303 SQ.FT. | 300.3 - 306.8 SQ.M.



Get used to extravagance with a 3300 sq. ft. living space featuring 4 master bedrooms, spaced across three levels.

---

Expect more with an abode that includes open sundecks, domestic-help quarters, walk-in closets, wide balconies and a garage.



Discover unmatched luxury with a home that features three naturally-lit levels of convenience and comfort.

---

Experience nothing but the finest with homes that follow German standards of luxury and go through detailed checks for quality control.

---

Add a spa-like experience into your daily routine with porcelain-tiled, stunning bathrooms that provide the perfect balance between sophistication and comfort.

---

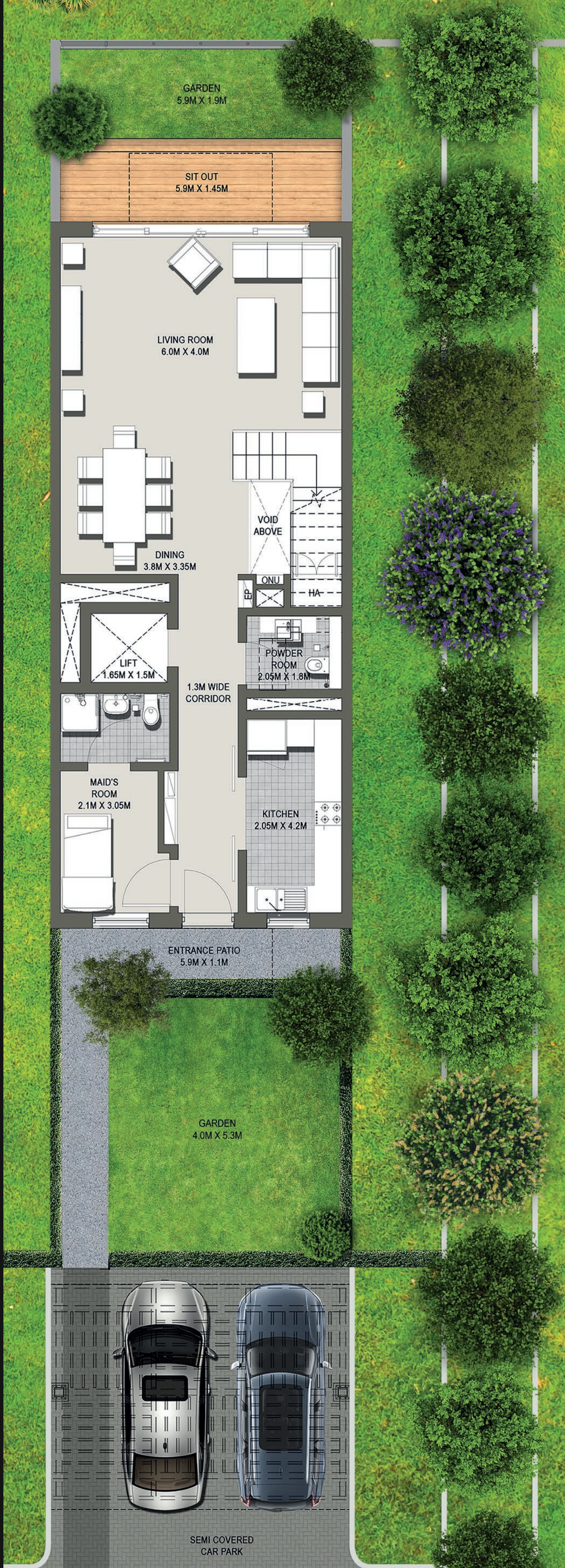
Experience true luxury without the wait with Garden Houses that are entirely ready for you to move into.



Experience contemporary Garden House living  
with two beautifully-landscaped private  
gardens, at the front and back of your home.

Live at Dubai's most prestigious address:

*1-27 Garden Avenue,  
Sobha Hartland,  
MBR City, Dubai.*



GARDEN  
5.9M X 1.9M

SIT OUT  
5.9M X 1.45M

LIVING ROOM  
6.0M X 4.0M

DINING  
3.8M X 3.35M

LIFT  
1.65M X 1.5M

1.3M WIDE  
CORRIDOR

MAID'S  
ROOM  
2.1M X 3.05M

KITCHEN  
2.05M X 4.2M

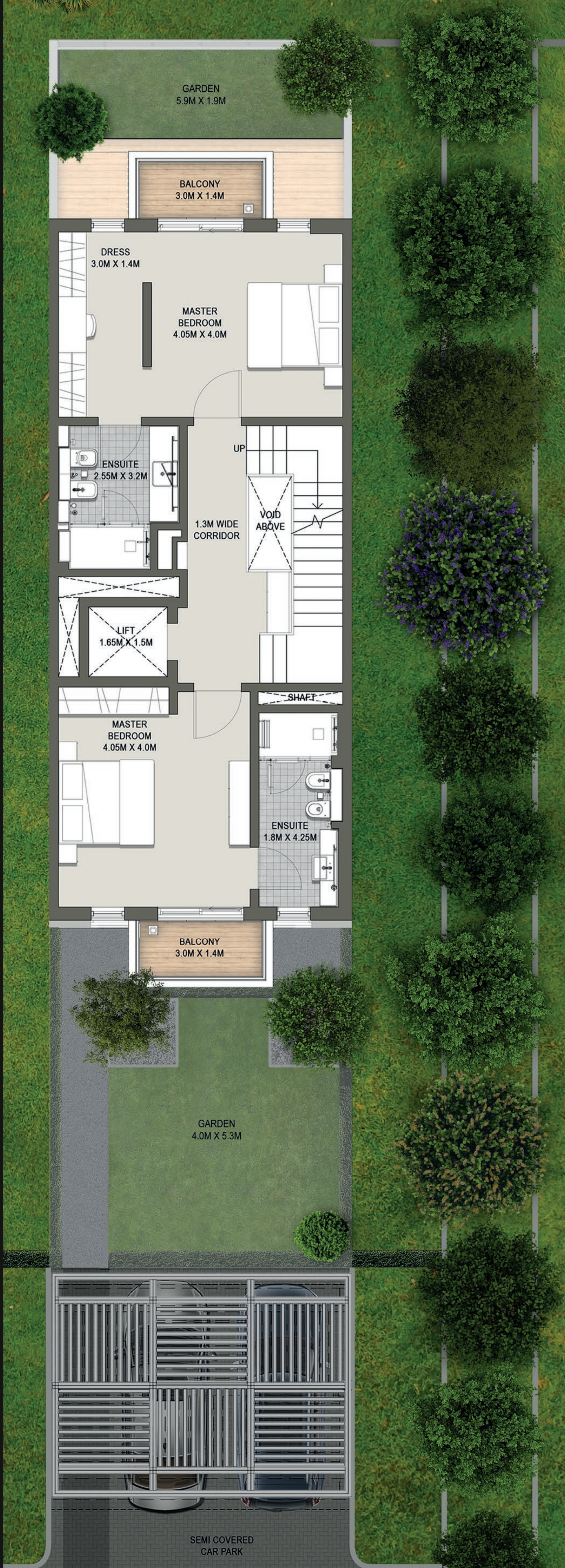
POWDER  
ROOM  
2.05M X 1.8M

VOID  
ABOVE

ENTRANCE PATIO  
5.9M X 1.1M

GARDEN  
4.0M X 5.3M

SEMI COVERED  
CAR PARK



GARDEN  
5.9M X 1.9M

BALCONY  
3.0M X 1.4M

DRESS  
3.0M X 1.4M

MASTER  
BEDROOM  
4.05M X 4.0M

ENSUITE  
2.55M X 3.2M

UP

VOID  
ABOVE

1.3M WIDE  
CORRIDOR

LIFT  
1.65M X 1.5M

SHAFT

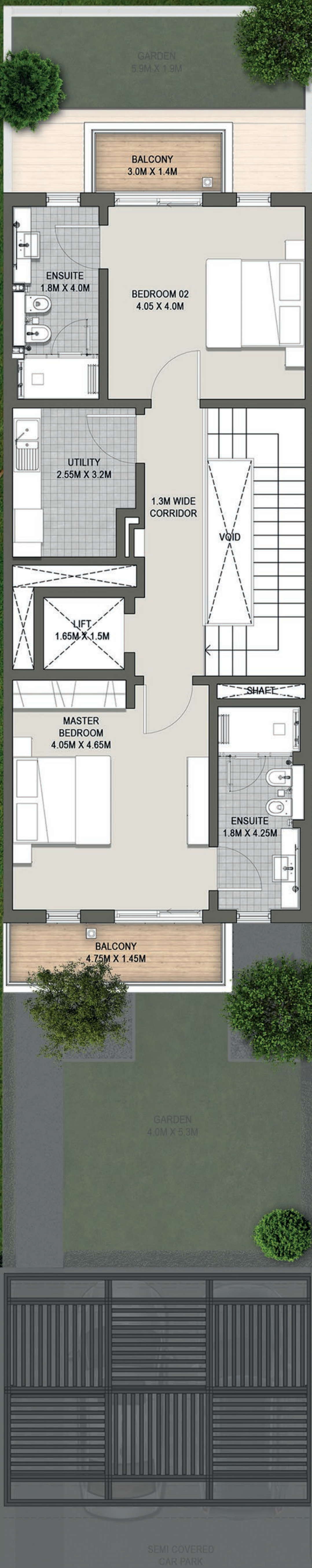
MASTER  
BEDROOM  
4.05M X 4.0M

ENSUITE  
1.8M X 4.25M

BALCONY  
3.0M X 1.4M

GARDEN  
4.0M X 5.3M

SEMI COVERED  
CAR PARK





# SOBHA

REALTY