

AC/P 45 & 55 | Multi-billion barrel Zeta Oil Play

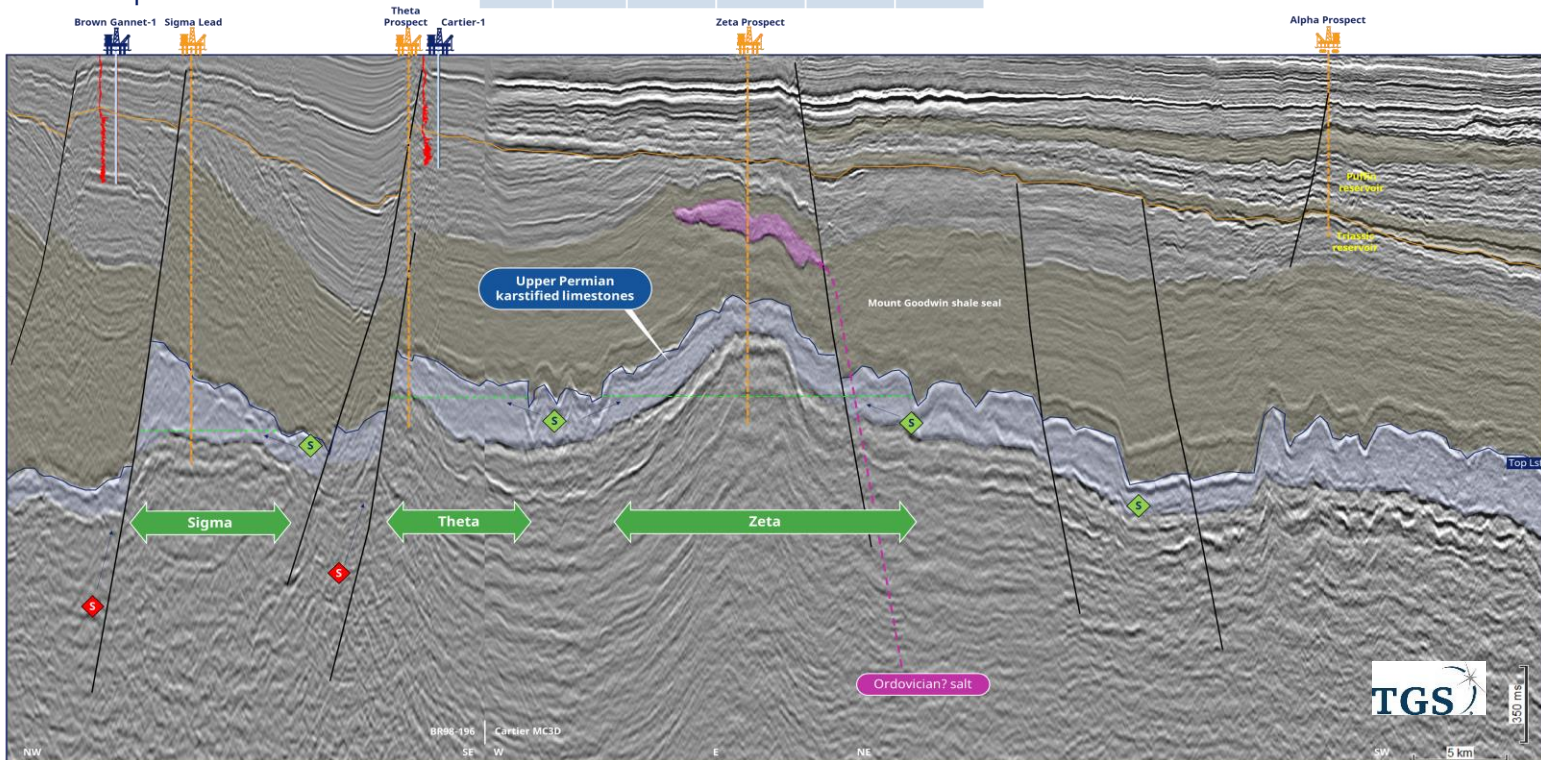
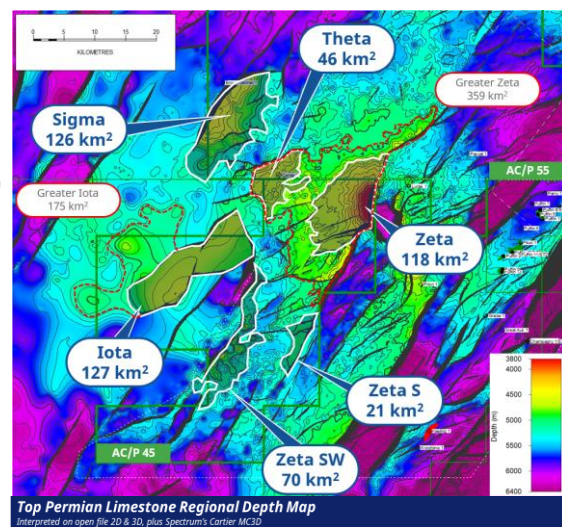
Finder's acreage fully captures entire play

- Multiple large untested structures with thick karstified limestone reservoirs
- Thick regional Mount Goodwin Formation sealing shale
- Hydrocarbon charge from oil mature in-situ anoxic source rocks
- Multi-billion barrel play potential in shallow water (~50 – 120m water depth)
- High quality Cartier MC3D pSDM provides partial coverage of play

Incentive

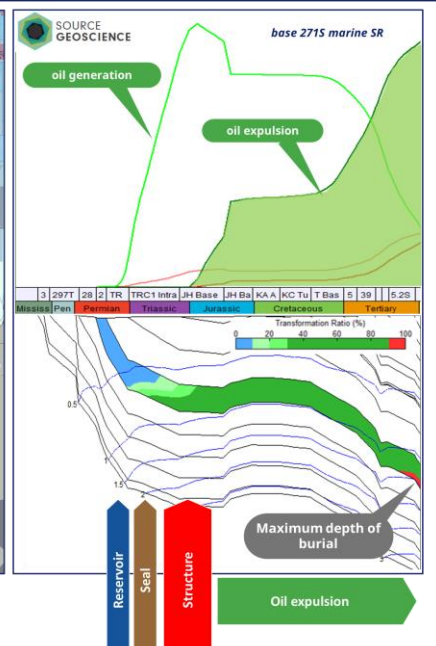
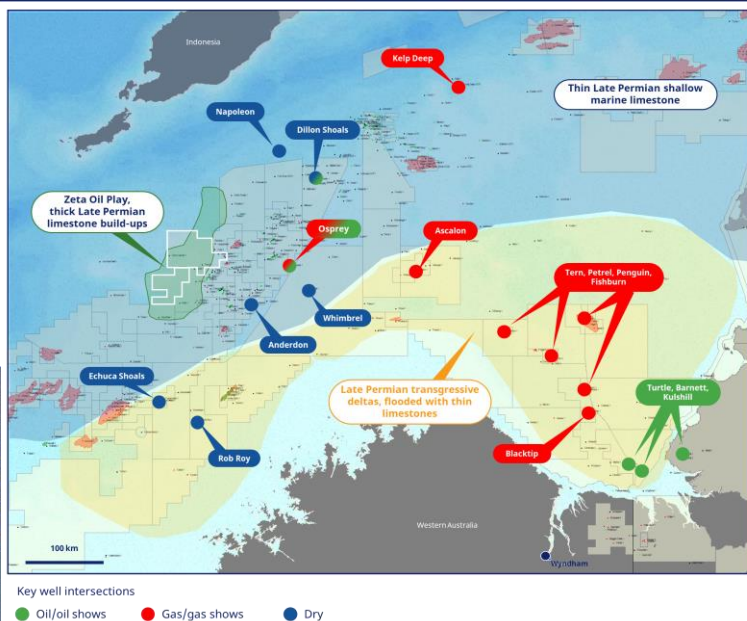
- Acquisition of Zeta 3D to provide full play coverage and materially derisk prospectivity
- Material prospect sizes with running room
- Build material position ahead of competition

Gross Prospective Resources (Recoverable Oil mmbbls)					
	Area	P ₉₀	P ₅₀	P _{mean}	P ₁₀
Zeta	118	11	132	555	1,534
Iota	127	18	199	816	2,259
Sigma	126	24	240	863	2,399
Theta	46	7	59	181	501
ZetaSW	70	7	70	253	704
Zeta S	21	7	20	52	131



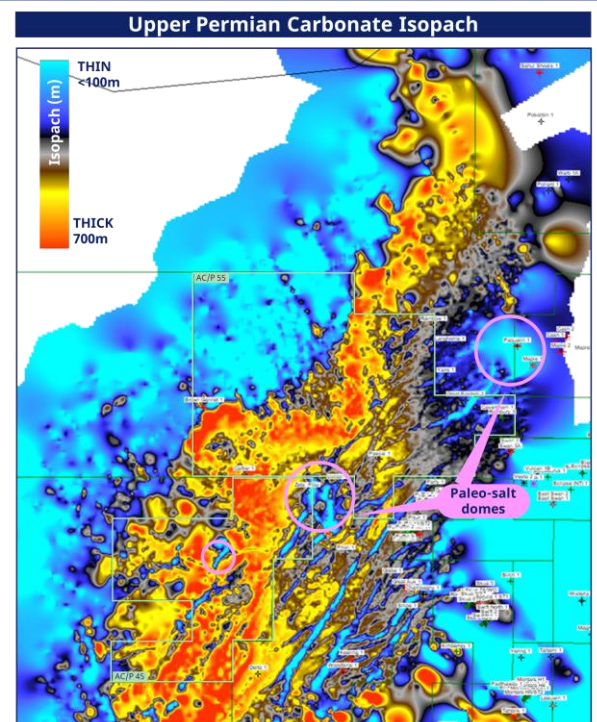
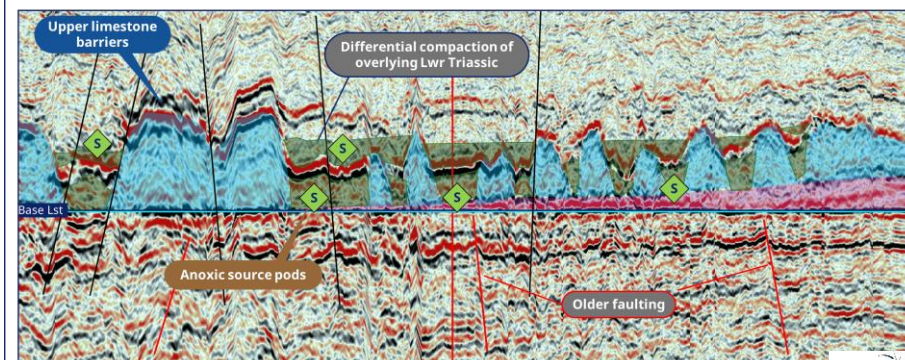
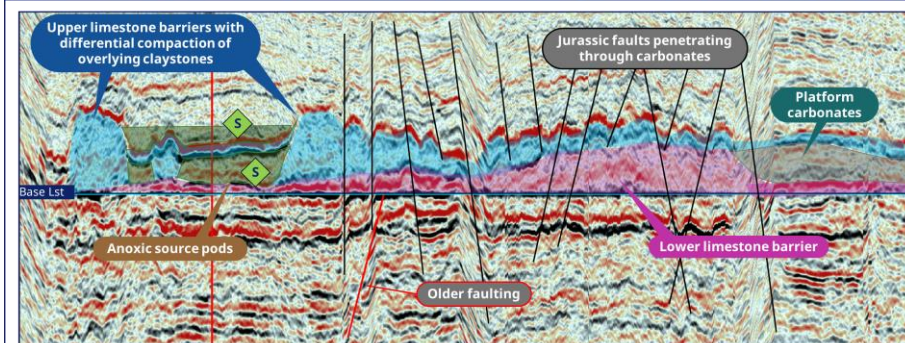
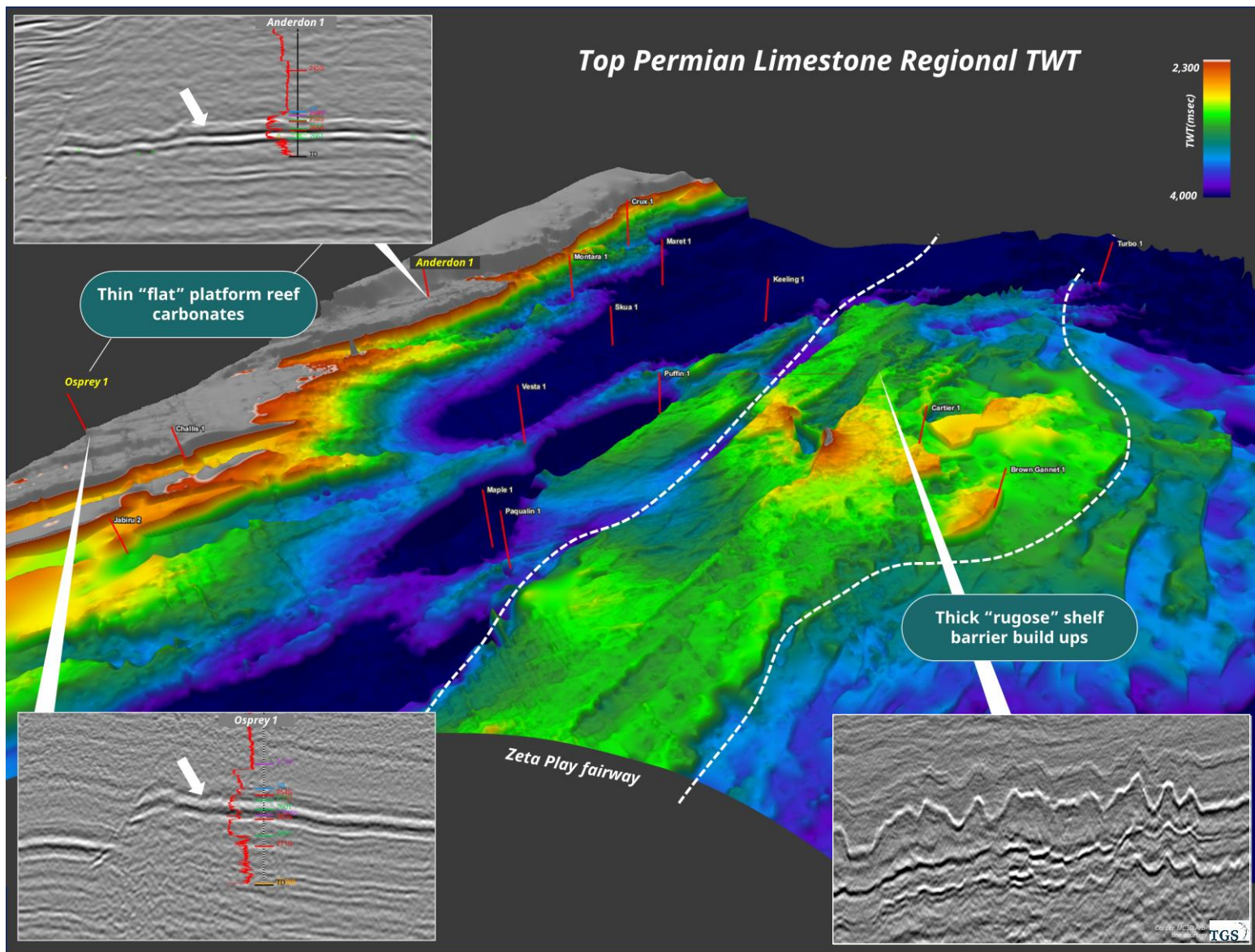
Zeta Play Oil Charge

- Oil-liquids source potential from in-situ anoxic source pods, and/or
- Restricted marine shales (ie Triassic "Hovea Member" eq.), and/or
- Deeper Permo-Carboniferous source potential



AC/P 45 & AC/P 55 – Zeta Farm-in Opportunity

Finder's acreage fully captures exciting Permian Zeta Oil Play



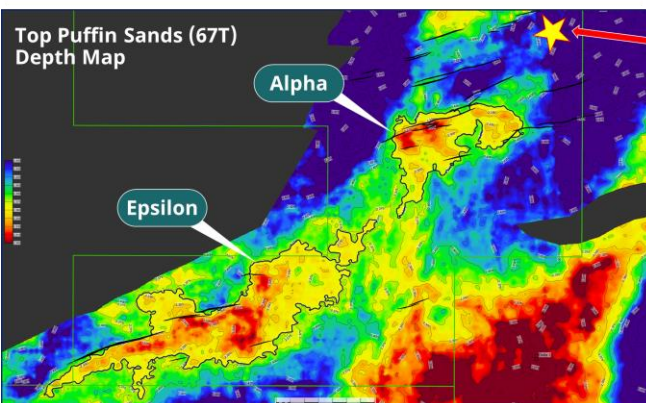
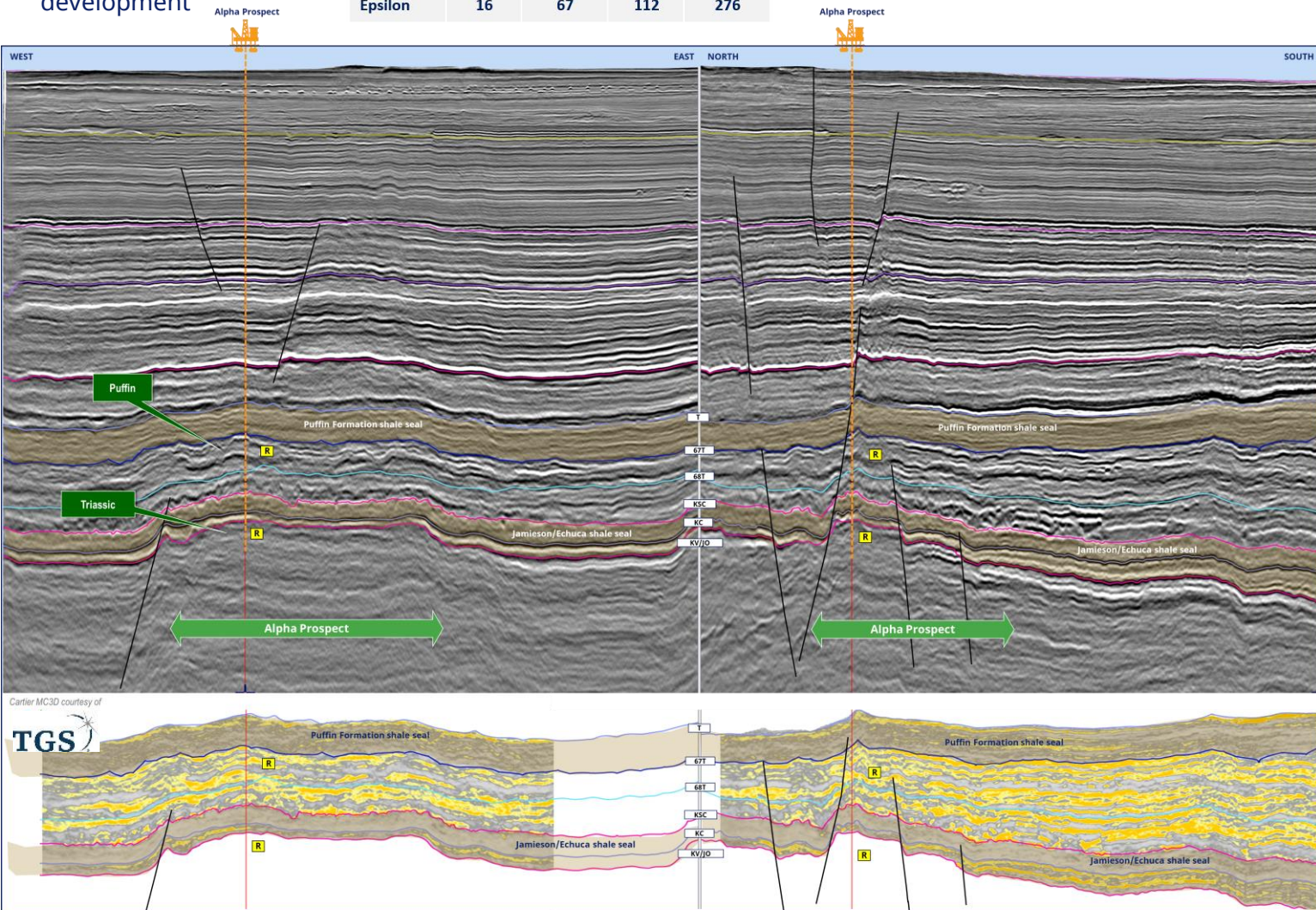
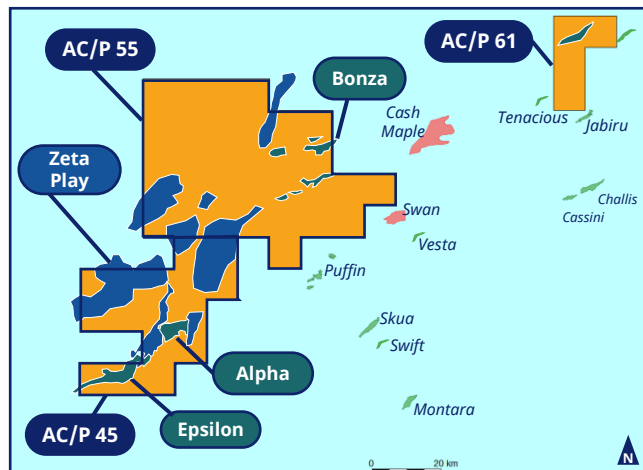
Carrier MC3D Arb-line courtesy of TGS

AC/P 45 | Alpha & Epsilon Drill Ready Prospects

Alpha and Epsilon Prospects

- Drill ready Alpha and Epsilon oil prospects in shallow water depths (~130m water depth)
- Broadband pSDM 3D mapping defines multi-target prospects at Puffin and Triassic sands
- Seismic inversion has derisked seal and reservoir
- Thermogenic oil recovered from 2014 seabed core sample typed to Lower Cretaceous
- Low risk GPOS of 32%
- Robust economics using FPSO and sub-sea development

		P ₉₀	P ₅₀	P _{mean}	P ₁₀
Alpha	Puffin	15	56	87	207
	Triassic	11	40	64	153
Epsilon		16	67	112	276



2014 seabed sampling operations recovered drop core sample 13a which showed evidence of thermogenic oil, later typed to Lower Cretaceous Echuca Shoals Formation source rock



Sample 13a thermogenic oil signature

