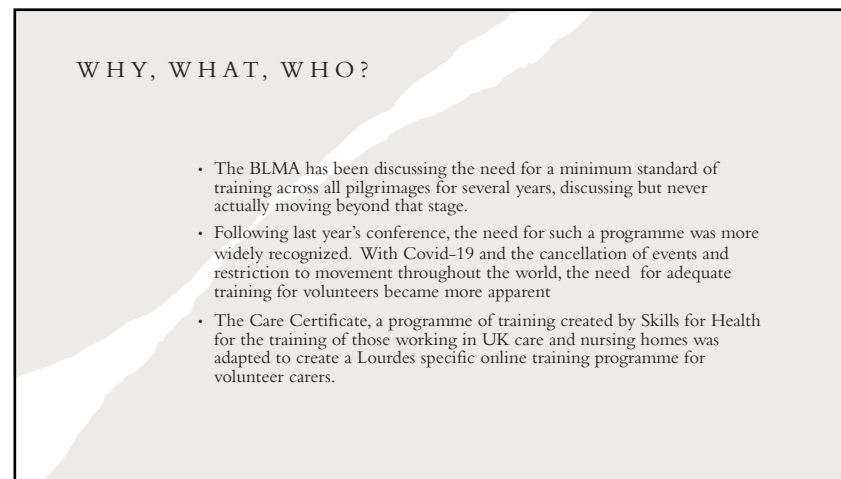
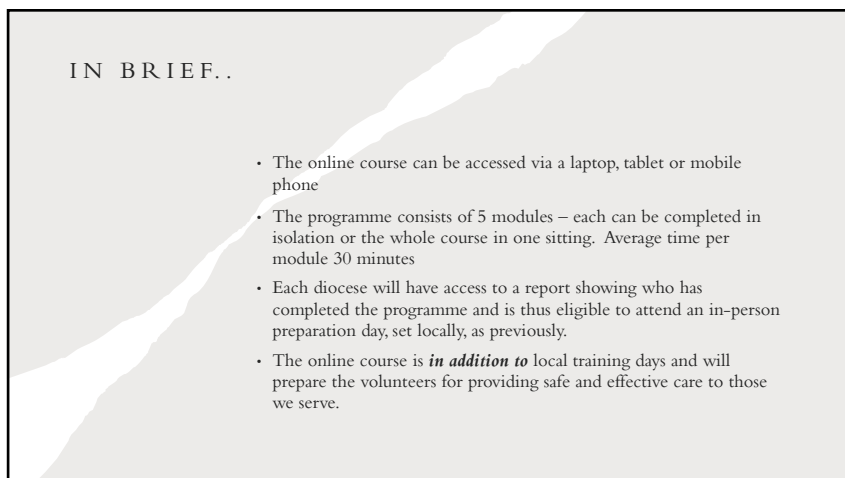




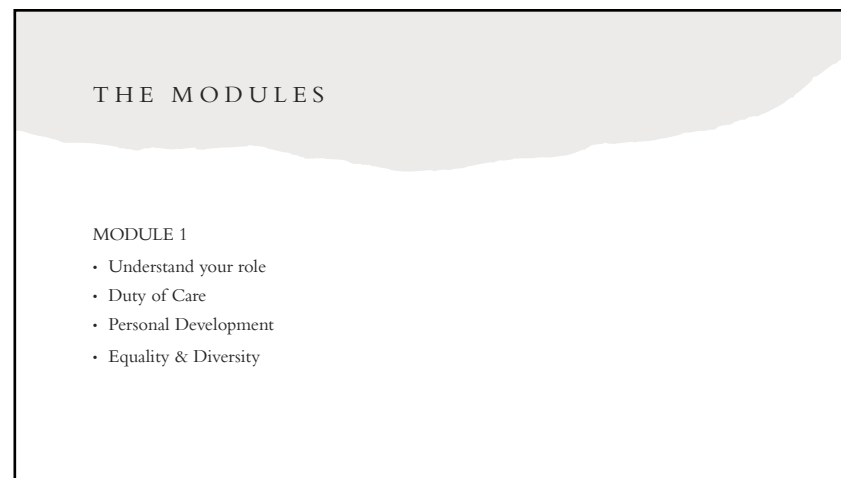
1



2



3



4

THE MODULES

MODULE 2

- Working in a person-centred way
- Communication
- Privacy & Dignity
- Handling Information

5

THE MODULES

MODULE 3

- Safeguarding Adults

6

THE MODULES

MODULE 4

- Awareness of mental health, dementia and learning disability
- Fluids & nutrition
- Basic life support

7

THE MODULES

MODULE 5

- Health & Safety
- Fire Safety
- Infection Prevention & Control

8

THE PROCESS

- The BLMA grant local admin access to each pilgrimage participating in the programme.
- The local admin shares the link and access password to individual users, who complete the training in their own time
- The local admin can access a report showing who has completed the training programme
- Reminders can be sent, if necessary

9

THE COST

- The BLMA has funded the initial cost for the creation of the programme.
- There will be ongoing costs for the user licence
- The minimum cost per pilgrimage (diocese) will be £100 for up to 100 users
- The cost per user over 100 will be an additional £1 per user

e.g.

40-50 users	£100
180 users	£180
300 users	£300

10

QUESTIONS?

11