

THE BIG BOOK OF
LITTLE KNITS
Issue #1

Featuring 15 knit and crochet
designs in Hayfield Bonus DK

Book 421
Code B

Knit Vintage



Hayfield

The Cherry Bakewell Tart

*knitted in Hayfield Bonus DK
shades Signal Red 977,
White 961 and Wheat 816*



..... ★

Knit Vintage

..... ★

This is the first Big Book of Little Knits created in Hayfield Bonus DK, and is crammed with vintage-inspired hand knits and crochet designs to decorate your home. We have designed the most realistic looking knitted cakes, including everyone's favourites – a flower-topped iced bun, a jam tart, a cherry bakewell tart, a strawberry-topped cream cake, a Battenburg slice and lastly, a huge slice of Victoria sponge. These cakes are almost good enough to eat!

In the spirit of Vintage style, we've created an iconic collection of home knits and crochet designs in gorgeous red, vintage white and navy blue. There are 4 stylish cushions to make, with a Union Jack, a mitred square, a cabled and bobbled cover and a matching granny square crochet cushion and stylish throw. This Knit Vintage collection would not be complete without some jolly knitted bunting – there are instructions and graphs to knit all the letters of the alphabet and this book includes 'Congratulations' and 'Eat Cake'. Fly the flag for Vintage knitting with our fabulously easy to follow designs... and look out for more Big Books of Little Knits.

Hayfield

.....★.....

Knit Cakes

.....★.....

We have chosen everyone's favourite cakes to create our cute knitted collection. They're fun decorations for a vintage-style home – display them on a pretty cake stand or use them as delightful pincushions.



Hayfield Bonus DK is easy to use, it's the perfect yarn for creating the finer details on our cakes including the prettiest little flowers, great swirls of cream and perfect pastry edges.

Introducing...

*The Victoria Sponge, the
Strawberry Cream Bun, The Battenburg
Slice and the Jam Tart.*

A truly splendid set of cakes.





..... ★

Knit Bunting

..... ★

Make our knitted bunting for celebrating special birthdays, family gatherings or as a fun backdrop to afternoon tea, cakes and knitting with the girls!



We have designed all the letters of the alphabet so you can spell out your own special messages and choose your own colours too. Knit up bunting with names for a surprise birthday event or to decorate children's nurseries and bedrooms. Happy knitting.

Knitted in Bonus DK shades Clover 793, Iced Pink 958 and Pink 992.



This pretty little flower takes just a few rows of knitting, roll it up gently, pop the leaves on and sew with a couple of stitches.



Probably our easiest cake to make, you knit the jam edges and garter stitch sponge and embroider the cross on afterwards in easy chain stitch.



We've added a cardboard top and bottom to make the Victoria sponge a very presentable slice of cake.



Who can resist this traditional little cake, with perfect picot edges and garter stitch jam.



Now here's a perky little cake with a jolly red cherry to place on top. Add just the right amount of stuffing to keep the pastry case a perfect shape!



With a swirl of knitted cream and a succulent strawberry this cake looks far too good to eat.

From left to right. All cakes are knitted in Bonus DK

1) The Flower Bun is knitted in Olive 791, Pink 992, White 961, and Wheat 816 **2)** The Battenburg Slice is in Primrose 957, Iced Pink 958 and Merlot 835 **3)** The Victoria Sponge is in Wheat 816, Primrose 957 and Merlot 835 **4)** The Jam Tart is in Wheat 816 and Merlot 835 **5)** The Cherry Bakewell Tart is in Signal Red 977, White 961 and Wheat 816 **6)** The Strawberry Cream Cake is in Olive 791, Signal Red 977, Aran 993, Wheat 816, Cupid 944 and White 961.

The Bobbled Cafetière Cosy

knitted in Clover 793.

*As you're knitting, make sure all your
bobbles come to the front to
create this fabulous texture.*



WE LOVE...



Home Knits

.....★.....

Knit the Alphabet



Inside your knitting instructions you will find all the letters of the alphabet with written instructions and easy diagrams to follow. Each letter is knitted in garter stitch and our instructions will help you to shape the edges. With over 60 colours to choose from, the only limit is your imagination!

Contents

	Page No
TEA PARTY CAKES	2
CAFETIÈRE COSY	7
CUSHIONS	8
CROCHET BLANKET	11

SIRDAR SPINNING LTD CANNOT ACCEPT RESPONSIBILITY FOR THE RESULT OF USING ANY OTHER YARN.

Owing to printing restrictions the colour reproduction is matched as closely as possible to the yarn.

QUERIES. Please contact:- Knitting Helpline, **SIRDAR SPINNING LTD**, Flanshaw Lane,
Wakefield, WF2 9ND, West Yorkshire, England.

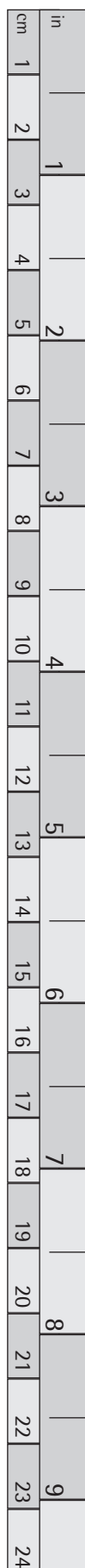
For General Enquiries:- Tel: 01924 371501.

For Knitting Helpline Enquiries:- Tel: 01924 231686 (Voice mail service replies with 7 working days).

Fax. 01924 290506. www.sirdar.co.uk

E-mail: Knitting-helpline@sirdar.co.uk

WARNING. Reproduction of this publication is protected by copyright. It is sold on the condition that it is only used for non-commercial purposes. All other rights are reserved by **SIRDAR SPINNING LTD.**



TEA PARTY CAKES in HAYFIELD BONUS DK

MATERIALS

Weights in grammes are approximate

Strawberry Cream Bun

F013 Hayfield Bonus DK

Colour A shade 961 5g

Colour B shade 944 5g

Colour C shade 963 10g

Colour D shade 993 10g

Colour E shade 977 5g

Colour F shade 634 5g

Jam Tart

F013 Hayfield Bonus DK

Colour A shade 963 5g

Colour B shade 698 5g

Bakewell Tart

F013 Hayfield Bonus DK

Colour A shade 963 10g

Colour B shade 961 5g

Colour C shade 977 5g

Flower Bun

F013 Hayfield Bonus DK

Colour A shade 992 10g

Colour B shade 963 5g

Colour C shade 961 5g

Colour D shade 634 5g

Victoria Sponge

F013 Hayfield Bonus DK

Colour A shade 963 10g

Colour B shade 957 10g

Colour C shade 698 5g

Battenberg Slice

F013 Hayfield Bonus DK

Colour A shade 698 5g

Colour B shade 957 10g

Colour C shade 958 5g

The yarn amounts are based on average requirements when specified tension and yarn is used.

You will also need 1 Pair of 4mm (UK8 – USA6) Knitting Needles and 1 Pair of 3¼mm (UK10 – USA3) Knitting Needles.

Beads for Sprinkles (on Strawberry Cream Bun).

1 A4 sheet of Medium Weight Cardboard for each cake.

High Loft Hygienic Toy Filler.

TENSION

22 sts and 28 rows to 10cm, (4in) over stocking stitch on 4mm needles or the size required to give correct tension.

Check your tension – if less stitches use a thinner needle, if more use a thicker needle.

IT IS ESSENTIAL TO WORK TO THE STATED TENSION TO ENSURE SUCCESS.

ABBREVIATIONS

alt alternate, **cm** centimetres, **cont** continue, **DK** double knitting, **g** grammes, **in** inch(es), **inc** increase(ing), **k** knit, **mm** millimetres, **p** purl, **patt** pattern, **psso** pass slipped stitch over, **rep** repeat, **rs** right side, **s1** slip 1 stitch knitways, **st(s)** stitch(es), **tog** together, **ws** wrong side.

STRAWBERRY CREAM BUN

Buncase

Using 3¼mm needles, thumb method and A cast on 43 sts.

1st Row. (rs) K1, * p1, k1, rep from * to end.

2nd Row. P1, * k1, p1, rep from * to end.

These 2 rows will now be referred to as **1x1 rib**.

Working in 1x1 rib cont until work measures 3cm, (1¼in), ending with a ws row. Break off A, join in B.

Buncase Edging

1st Row. Knit to end.

2nd Row. * Cast off 2 sts, (turn, k1) 3

times, turn, rep from * to last 2 sts, cast off.

Buncase Base

Using 3¼mm needles, thumb method and A cast on 3 sts.

1st, 3rd, 5th, 7th and 9th Rows. (rs). Knit.

2nd Row. (Inc in next st) twice, k1. 5 sts.
4th Row. Inc in 1st st, k2, inc in next st, k1. 7 sts.

6th Row. Inc in 1st st, k4, inc in next st, k1. 9 sts.

8th Row. Inc in 1st st, k6, inc in next st, k1. 11 sts.

10th Row. Knit.

11th Row. K2tog, k7, k2tog. 9 sts.

12th and Every Alt Row. Knit.

13th Row. K2tog, k5, k2tog. 7 sts.

15th Row. K2tog, k3, k2tog. 5 sts.

17th Row. K2tog, k1, k2tog. 3 sts.

Cast off.

The Bun

Using 4mm needles, thumb method and C cast on 49 sts.

1st Row. (rs) Knit.

2nd Row. Purl.

Rep 1st and 2nd rows twice more.

7th Row. K2, * k2tog, k10, rep from * to last 11 sts, k2tog, k9. 45 sts.

8th, 10th and 12th Rows. Purl.

9th Row. K2, * k2tog, k9, rep from * to last 10 sts, k2tog, k8. 41 sts.

11th Row. K2, * k2tog, k8, rep from * to last 9 sts, k2tog, k7. 37 sts.

13th Row. K2, * k2tog, k7, rep from * to last 8 sts, k2tog, k6. 33 sts.

14th Row. P5, * p2tog, p6, rep from * to last 4 sts, p2tog, p2. 29 sts.

15th Row. K2, * k2tog, k5, rep from * to last 6 sts, k2tog, k4. 25 sts.

16th Row. P3, * p2tog, p4, rep from * to last 4 sts, p2tog, p2. 21 sts.

17th Row. K2, * k2tog, k3, rep from * to last 4 sts, k2tog, k2. 17 sts.

18th Row. P1, * p2tog, p2, rep from * to last 4 sts, p2tog, p2. 13 sts.

19th Row. K1, * k2tog, k1, rep from * to end. 9 sts.

Cast off purlways.

Buttercream Icing

Using 4mm needles, thumb method and D cast on 5 sts.

1st Row. (rs) Knit to end, wrapping yarn twice around needle for every stitch.

2nd Row. Purl to end, dropping extra loops from previous row for every stitch.

These 2 rows set patt. Cont in patt until work measures 48cm, (19in), ending with a ws row.

Cast off.

Strawberry (Make 2 pieces)

Using 3¼mm needles, thumb method and E cast on 4 sts.

1st and Every Alt Row. (ws) Purl.

2nd Row. Inc in 1st st, k1, inc in next st, k1. 6 sts.

4th Row. Inc in 1st st, k3, inc in next st, k1. 8 sts.

6th Row. Inc in 1st st, k5, inc in next st, k1. 10 sts.

8th Row. Inc in 1st st, k7, inc in next st, k1. 12 sts.

10th Row. Knit.

12th Row. K2tog, k8, k2tog. 10 sts.

14th Row. K2tog, k6, k2tog. 8 sts.

15th Row. Purl.

Cast off.

TO MAKE UP

Using the cardboard, draw around the Buncase Base, approximately 4cm (1½in) diameter and cut out. Sew the short sides of the Buncase together to form a circle and then sew onto Buncase Base. Sew the side seam of the Bun together and run a gathering stitch around the centre top. Place the cardboard circle inside the Buncase and sew the Bun to the inside top edge of the Buncase just below the edging, leaving a gap to fill with stuffing (**Do not overfill**), then sew up gap. Sew together the 2 pieces of Strawberry and fill with stuffing, run the thread through centre of Strawberry to form a Strawberry shape. Using D sew on knot stitches in a random patt to the Strawberry and strands of F at the top. Swirl and stitch the icing in position onto the Bun and sew the Strawberry in centre of Icing. To finish sew on beads.

JAM TART

Pastry

Using 3¼mm needles, thumb method and A cast on 43 sts.

1st Row. (rs) K1, * p1, k1, rep from * to end.

2nd Row. P1, * k1, p1, rep from * to end.

These 2 rows will now be referred to as **1x1 rib**.

Working in 1x1 rib cont until work measures 2cm, (¾in), ending with a ws row.

Pastry Edging

1st Row. Knit to end.

2nd Row. * Cast off 2 sts, (turn, k1) 3 times, turn, rep from * to last 2 sts, cast off.

Pastry Base

Using 3¼mm needles, thumb method and A cast on 3 sts.

1st, 3rd, 5th, 7th and 9th Rows. (rs). Knit.

2nd Row. (Inc in next st) twice, k1. 5 sts.

4th Row. Inc in 1st st, k2, inc in next st, k1. 7 sts.

6th Row. Inc in 1st st, k4, inc in next st, k1. 9 sts.

8th Row. Inc in 1st st, k6, inc in next st, k1. 11 sts.

10th Row. Knit.

11th Row. K2tog, k7, k2tog. 9 sts.

12th and Every Alt Row. Knit.

13th Row. K2tog, k5, k2tog. 7 sts.

15th Row. K2tog, k3, k2tog. 5 sts.

17th Row. K2tog, k1, k2tog. 3 sts.

Cast off.

The Jam (Make 2 pieces)

Using 4mm needles, thumb method and B cast on 5 sts.

1st, 3rd, 5th and 7th Rows (rs). Knit.

2nd Row. Inc in 1st st, k2, inc in next st, k1. 7 sts.

4th Row. Inc in 1st st, k4, inc in next st, k1. 9 sts.

6th Row. Inc in 1st st, k6, inc in next st, k1. 11 sts.

8th Row. Knit.

9th Row. Inc in 1st st, k8, inc in next st, k1. 13 sts.

10th, 11th, 12th, 14th, 15th, 17th and 19th Rows. Knit.

13th Row. K2tog, k9, k2tog. 11 sts.

16th Row. K2tog, k7, k2tog. 9 sts.
18th Row. K2tog, k5, k2tog. 7 sts.
20th Row. K2tog, k3, k2tog. 5 sts.
21st Row. Knit.
 Cast off.

TO MAKE UP

Using the cardboard, draw around the Pastry Base, approximately 4cm, (1½in), diameter and cut out. Sew the short sides of the Pastry Sides together to form a circle and then sew onto the Pastry Base. Sew together the 2 pieces of Jam, place the cardboard circle inside the Pastry Base and sew the Jam to the Pastry sides 3 rows below the Pastry Edging.

BAKEWELL TART

Pastry

Using 3¼mm needles, thumb method and A cast on 43 sts.

1st Row. (rs) K1, * p1, k1, rep from * to end.

2nd Row. P1, * k1, p1, rep from * to end.

These 2 rows will now be referred to as **1x1 rib**.

Working in 1x1 rib cont until work measures 2½cm, (1in), ending with a ws row.

Pastry Edging

1st Row. Knit to end.

2nd Row. * Cast off 2 sts, (turn, k1) 3 times, turn, rep from * to last 2 sts, cast off.

Pastry Base

Using 3¼mm needles, thumb method and A cast on 3 sts.

1st, 3rd, 5th, 7th and 9th Rows (rs). Knit.

2nd Row. (Inc in next st) twice, k1. 5 sts.

4th Row. Inc in 1st st, k2, inc in next st, k1. 7 sts.

6th Row. Inc in 1st st, k4, inc in next st, k1. 9 sts.

8th Row. Inc in 1st st, k6, inc in next st, k1. 11 sts.

10th Row. Knit.

11th Row. K2tog, k7, k2tog. 9 sts.

12th and Every Alt Row. Knit.

13th Row. K2tog, k5, k2tog. 7 sts.

15th Row. K2tog, k3, k2tog. 5 sts.

17th Row. K2tog, k1, k2tog. 3 sts.

Cast off.

Icing (Make 2 pieces)

Using 4mm needles, thumb method and B cast on 5 sts.

1st and Every Alt Row. (ws) Purl.

2nd Row. Inc in 1st st, k2, inc in next st, k1. 7 sts.

4th Row. Inc in 1st st, k4, inc in next st, k1. 9 sts.

6th Row. Inc in 1st st, k6, inc in next st, k1. 11 sts.

8th Row. Inc in 1st st, k8, inc in next st, k1. 13 sts.

10th Row. K2tog, k9, k2tog. 11 sts.

12th Row. K2tog, k7, k2tog. 9 sts.

14th Row. K2tog, k5, k2tog. 7 sts.

15th Row. Purl.

Cast off.

Cherry

Using 3¼mm needles, thumb method and C cast on 5 sts.

1st and Every Alt Row. (ws) Purl.

2nd Row. Inc in 1st st, k2, inc in next st, k1. 7 sts.

4th Row. Inc in 1st st, k2, inc in next st, k1, inc in next st, k1. 10 sts.

6th Row. K2tog, k2, k2tog, k2, k2tog. 7 sts.

8th Row. K2tog, k3, k2tog. 5 sts.

9th Row. Purl.

Cast off.

TO MAKE UP

Using the cardboard, draw around the Pastry Base, approximately 4cm, (1½in), diameter and cut out. Sew the short sides of the Pastry Sides together to form a circle and then sew onto the Pastry Base. Sew together the 2 pieces of Icing and lightly filling them with stuffing, place the cardboard circle inside the Pastry Base and sew the Icing to the pastry sides, 1 row below the Pastry Edging. Run a gathering stitch evenly all along the outer edge of the Cherry, stuff and gather to form a small

ball. Sew the Cherry into the centre of the Bakewell Tart.

FLOWER BUN

Buncase

Using 3¼mm needles, thumb method and A cast on 43 sts.

1st Row. (rs) K1, * p1, k1, rep from * to end.

2nd Row. P1, * k1, p1, rep from * to end.

These 2 rows will now be referred to as **1x1 rib**.

Working in 1x1 rib cont until work measures 2½cm, (1in), ending with a ws row.

Buncase Edging

1st Row. Knit to end.

2nd Row. * Cast off 2 sts, (turn, k1) 3 times, turn, rep from * to last 2 sts, cast off.

Buncase Base

Using 3¼mm needles, thumb method and A cast on 3 sts.

1st, 3rd, 5th, 7th and 9th Rows (rs). Knit.

2nd Row. (Inc in next st) twice, k1. 5 sts.

4th Row. Inc in 1st st, k2, inc in next st, k1. 7 sts.

6th Row. Inc in 1st st, k4, inc in next st, k1. 9 sts.

8th Row. Inc in 1st st, k6, inc in next st, k1. 11 sts.

10th Row. Knit.

11th Row. K2tog, k7, k2tog. 9 sts.

12th and Every Alt Row. Knit.

13th Row. K2tog, k5, k2tog. 7 sts.

15th Row. K2tog, k3, k2tog. 5 sts.

17th Row. K2tog, k1, k2tog. 3 sts.

Cast off.

The Bun

Using 4mm needles, thumb method and B cast on 5 sts.

1st and Every Alt Row. (ws) Purl.

2nd Row. Inc in 1st st, k2, inc in next st, k1. 7 sts.

4th Row. Inc in 1st st, k4, inc in next st, k1. 9 sts.

6th Row. Inc in 1st st, k6, inc in next st, k1. 11 sts.

8th Row. Inc in 1st st, k8, inc in next st, k1. 13 sts.

10th Row. Inc in 1st st, k10, inc in next st, k1. 15 sts.

12th Row. Inc in 1st st, k12, inc in next st, k1. 17 sts.

14th Row. Inc in 1st st, k14, inc in next st, k1. 19 sts.

16th Row. Knit.

18th Row. K2tog, k15, k2tog. 17 sts.

20th Row. K2tog, k13, k2tog. 15 sts.

22nd Row. K2tog, k11, k2tog. 13 sts.

24th Row. K2tog, k9, k2tog. 11 sts.

26th Row. K2tog, k7, k2tog. 9 sts.

28th Row. K2tog, k5, k2tog. 7 sts.

30th Row. K2tog, k3, k2tog. 5 sts.

31st Row. Purl.

Cast off.

Icing

Using 3¼mm needles, thumb method and C cast on 45 sts.

1st Row. (rs) Knit.

2nd and Every Alt Row. Purl.

3rd Row. K1, (k2tog, k7) 4 times, k2tog, k6. 40 sts.

5th Row. K1, (k2tog, k6) 4 times, k2tog, k5. 35 sts.

7th Row. K1, (k2tog, k5) 4 times, k2tog, k4. 30 sts.

9th Row. K1, (K2tog, k4) 4 times, k2tog, k3. 25 sts.

11th Row. K1, (k2tog, k3) 4 times, k2tog, k2. 20 sts.

13th Row. K1, (k2tog, k2) 4 times, k2tog, k1. 15 sts.

15th Row. K1, (k2tog, k1) 4 times, k2tog. 10 sts.

16th Row. Purl.

Cast off.

Rosebud

Using 3¼mm needles, thumb method and A cast on 10 sts.

1st and 3rd Rows. (ws) Purl.

2nd Row. K1, inc in next st, k6, inc in next st, k1. 12 sts.

4th Row. (Inc in next st, k1) 6 times. 18 sts.

5th Row. Purl.

Cast off.

Leaves (Make 2)

Using 3¼mm needles, thumb method and D cast on 3 sts.

1st and 3rd Rows. Purl.

2nd Row. (Inc in next st) twice, k1. 5 sts.

4th Row. K2tog, k1, k2tog. 3 sts.

5th Row. S1, k2tog, pssso. 1 st.

Fasten off.

TO MAKE UP

Using the cardboard, draw around the Buncase Base, approximately 4cm, (1½in), diameter and cut out. Sew the short sides of the Buncase together to form a circle and then sew onto the Buncase Base. Place the cardboard circle inside the Buncase Base and sew the Bun to the inside top edge of the Buncase just below the Edging, leaving a gap to fill with stuffing, then sew up the gap. Sew the short sides of the Icing together. Sew a running thread along the cast off edge and gather, do the same for the cast on edge to form a pouch. Sew the cast on edge of the Icing in place onto the Bun, allowing the Icing to fold over the sewn on edge. Twist the Rosebud into a Rosebud shape and sew together the Rosebud and the two leaves onto the top of the Icing.

VICTORIA SPONGE

Top and Bottom (Both alike)

Using 4mm needles, thumb method and A cast on 1 st.

1st and Every Alt Row. (ws) Purl.

2nd Row. Knit into front and back of st. 2 sts.

4th Row. (Inc in next st) twice. 4 sts.

6th Row. Inc in 1st st, k1, inc in next st, k1. 6 sts.

8th Row. Knit.

10th Row. Inc in 1st st, k3, inc in next st, k1. 8 sts.

12th Row. Knit.

14th Row. Inc in 1st st, k5, inc in next st, k1. 10 sts.

16th Row. Knit.

18th Row. Inc in 1st st, k7, inc in next st, k1. 12 sts.

20th Row. Knit.

22nd Row. Inc in 1st st, k9, inc in next st, k1. 14 sts.

24th Row. Knit.

26th Row. Inc in 1st st, k11, inc in next st, k1. 16 sts.

28th Row. Knit.

30th Row. Inc in 1st st, k13, inc in next st, k1. 18 sts.

32nd Row. Knit.

34th Row. K2tog, k14, k2tog. 16 sts.

35th Row. P2tog, p12, p2tog. 14 sts.

36th Row. Cast off 2 sts, k9, k2tog. 11 sts.

37th Row. Cast off 2 sts, p6, p2tog. 8 sts.

Cast off.

Side (Worked in one piece)

Using 4mm needles, thumb method and B cast on 50 sts.

1st Row. (rs) Purl.

2nd Row. Knit.

Rep 1st and 2nd rows twice more.

Using C proceed as follows:-

7th Row. Knit.

8th Row. Purl.

Rep 7th and 8th rows once more.

Using B proceed as follows:-

11th Row. Knit.

12th Row. Knit.

13th Row. Purl.

14th and 15th Rows. As 12th and 13th rows.

16th Row. As 12th row.

17th Row. Purl.

Cast off.

Back

Using 4mm needles, thumb method and A cast on 22 sts.

1st Row. (rs) Knit.

2nd Row. Purl.

Rep 1st and 2nd rows twice more.

Using C proceed as follows:-

7th Row. Knit.

8th Row. Purl.

Rep 7th and 8th rows once more.

Using A proceed as follows:-

11th Row. Knit.

12th Row. Purl.

Rep 11th and 12th rows twice more.

17th Row. Knit.

This row will now be referred to as **g-st** (garter stitch).

Work 3 rows more in g-st.

Cast off.

TO MAKE UP

Using the cardboard, draw around the Side piece (when folded in half) approximately 10cm, (4in), x 5cm, (2in) and Bottom piece and cut out, then sellotape the pieces together. With ws facing sew together top and bottom rows of yarn C to create Jam fold on Sides and Back, making sure each stitch is sewn to its corresponding stitch. Sew the cast off edge of both Sides to either side of the Top piece. Then sew cast on edges of Side piece to either side of the Bottom piece. Fold over 4 rows of g-st on the back in half onto ws and slip stitch loosely in position. Insert the cardboard and sew the Back of the cake to the Top and Bottom with the first row of g-st sewn to the top of the cake. Then sew the short sides of the Back to

the short sides of the cake, fill with stuffing before the seam is finished.

BATTENBERG SLICE

Intarsia technique

When working with different balls of yarn the colour to be used should be twisted round the colour just used, to link the colours together and avoid holes.

Front and Back (Both alike)

Using 4mm needles, thumb method and A cast on 16 sts.

1st Row. (rs) Knit.

2nd Row. P8B, 8C.

3rd Row. P8C, 8B.

4th Row. K8B, 8C.

Rep 3rd and 4th rows 3 times more, then 3rd row once.

12th Row. P8C, 8B.

13th Row. P8B, 8C.

14th Row. K8C, 8B.

Rep 13th and 14th rows 3 times more, then 13th row once.

22nd Row. Using A, Purl.

Cast off Knitways.

Jam Side Edges for Left and Right (Both alike for each piece)

With rs facing, using 4mm needles and A, pick up and knit 18 sts evenly along side edge. Cast off purlways.

Marzipan Sides

Using 4mm needles, thumb method and B cast on 5 sts.

1st Row. (rs) Knit.

Rep 1st row until work is long enough to go evenly round Front/Back.

Cast off.

TO MAKE UP

Using the cardboard, draw around the side edges and cut out 4 slightly smaller pieces, approximately 1cm, (1/2in), x 6cm, (2 1/2in) and sellotape together to form a square. Chain stitch the Jam cross in A on the front and Back of the Battenberg Slice. Sew the Side cast on and cast off sts together and then sew the Front to the sides 1 row below the cast on edge of the sides. Insert the cardboard side pieces and sew the Back to the Sides 1 row below the cast off edge of the Sides, filling with stuffing before the seam is finished.

ALPHABET BUNTING

in

H a y f i e l d

BONUS DK

8 PAGE PULL-OUT

ALPHABET BUNTING in HAYFIELD BONUS DK

MEASUREMENTS

	LENGTH	11	cm
(Each letter measures (approximately)		4 1/4	in

MATERIALS

Each Letter will use approximately 8–10g per letter of Bonus DK or oddments of any suitable Sirdar DK
You will also need 1 Pair of 3 1/4mm (UK10 – USA3) Knitting Needles and Stitch Holders.

TENSION

22 sts and 42 rows to 10cm, (4in) over garter stitch on 3 1/4mm needles or the size required to give correct tension.
Check your tension – if less stitches use a thinner needle, if more use a thicker needle.

IT IS ESSENTIAL TO WORK TO THE STATED TENSION TO ENSURE SUCCESS.

ABBREVIATIONS

alt alternate, **cm** centimetres, **dec** decrease(ing), **DK** double knitting, **foll** following, **g** grammes, **in** inch(es), **inc** increase(ing), **k** knit, **mm** millimetres, **rem** remain(ing), **rep** repeat, **rs** right side, **s1** slip 1 stitch knitways, **st(s)** stitch(es), **tog** together.

G-st (garter stitch) **1st Row.** S1, knit.

Wrap 1 slip next st onto right hand needle and take the yarn to the opposite side between needles, slip same st back onto left hand needle.

ALPHABET

NOTE: All letters in the alphabet are worked in g-st.

All letters can be worked from graph except C, G and S.

A

Left Leg

* Using 3 1/4mm needles and thumb method cast on 5 sts.

Work 2 rows in g-st. *

Next Row. S1, k2tog (front edge), k2. 4 sts.

Next Row. S1, knit to end.

Next Row. S1, k1, inc in next st (back edge), k1. 5 sts.

Next Row. S1, knit to end.

Work 9 rows dec 1 st at front edge as before in 3rd and foll 6th row AT SAME TIME inc 1 st at back edge as before in 3rd and foll 4th row. 5 sts.

Work 1 row more without shaping.

Leave these 5 sts on a stitch holder.

Right Leg

Work as given for Left Leg of A from * to *.

Next Row. S1, k1, k2tog (back edge), k1. 4 sts.

Next Row. S1, knit to end.

Next Row. S1, inc in next st (front edge), knit to end. 5 sts.

Next Row. S1, knit to end.

Work 9 rows inc 1 st at front edge as

before in 3rd and foll 4th row AT SAME TIME dec 1 st at back edge as before in 3rd and foll 6th row. 5 sts.

Work 1 row more without shaping.

Leave these 5 sts on a stitch holder.

Joining Of Legs

With rs facing, slip 5 sts left on a stitch holder of left leg onto needle, rejoin yarn and knit to end, cast on 6 sts, with rs facing, slip 5 sts left on stitch holder of right leg back onto needle and knit to end. 16 sts.

Work 2 rows more without shaping.

Work 3 rows dec 1 st as before at each end of 2nd row. 14 sts.

Shape Top

Next Row. S1, k4, turn, leave rem 9 sts on a stitch holder. 5 sts.

Work 3 rows more without shaping.

Next Row. S1, k2tog (outside edge), inc in next st (inside edge), k1. 5 sts.

Work 6 rows dec 1 st at outside edge as before in 6th row. 4 sts.

Slip these 4 sts onto a stitch holder. With rs facing, rejoin yarn to rem 9 sts on stitch holder and cast off 4 sts, knit to end. 5 sts.

Work 3 rows more without shaping.

Next Row. S1, inc in next st (inside edge), k2tog (outside edge), k1. 5 sts.

Work 6 rows dec 1 st at outside edge as before in 6th row. 4 sts.

Next Row. S1, k3, cast on 2 sts, with ws

facing, knit across 4 sts left on a stitch holder. 10 sts.

Work 12 rows dec 1 st as before at each end of 5th and every foll 6th row. 6 sts.

Cast off rem 6 sts knitways.

B

**Using 3 1/4mm needles and thumb method cast on 11 sts.

Work 1 row in g-st.

Next Row. S1, knit to last 2 sts, inc in next st (front edge), k1. 12 sts.

Work 7 rows inc 1 st at front edge as before in next and every foll alt row. 16 sts.

Work 1 row more without shaping. **

* **Next Row.** S1, k6, turn, leave rem 9 sts on a stitch holder. 7 sts.

Work 1 row more without shaping.

Next Row. S1, knit to last 3 sts, k2tog (back edge), k1. 6 sts.

Work 5 rows inc 1 st at inside edge as before in 4th row. 7 sts.

Leave these 7 sts on a stitch holder. With rs facing, rejoin yarn to rem 9 sts left on a stitch holder and proceed as follows:- cast off 4 sts, knit to end. 5 sts.

Work 7 rows more without shaping.

Leave these 5 sts on a stitch holder.

With rs facing, rejoin yarn to 7 sts left on stitch holder and proceed as follows:- s1, k2tog, knit to end, cast on 4 sts and knit across rem 5 sts left on a stitch holder. 15 sts.

Work 1 row more without shaping. *
Work 3 rows dec 1 st at front edge as before in every row. 12 sts.

Work 1 row more without shaping.

Work 2 rows inc 1 st at front edge as before in every row. 14 sts.

Work 4 rows inc 1 st at front edge as before in next and foll 3rd row. 16 sts.

Work as given from * to *.

*** Work 4 rows dec 1 st at front edge as before in next and foll alt row. 13 sts.

Work 2 rows dec 1 st at front edge as before in every row. 11 sts.

Cast off rem 11 sts knitways.

C

Using 3¼mm needles and thumb method cast on 6 sts.

Work 4 rows in g-st.

* **Next Row.** S1, k3, wrap 1, turn, knit to end.

Rep last row twice.

Work 4 rows more without shaping.

Next Row. S1, k3, wrap 1, turn, knit to end.

Rep last row twice.

Next Row. S1, k4, wrap 1, turn, knit to end.

Next Row. S1, k3, wrap 1, turn, knit to end.

Next Row. S1, k2, wrap 1, turn, knit to end.

Next Row. S1, k1, wrap 1, turn, knit to end.

Next Row. S1, k2, wrap 1, turn, knit to end.

Work 4 rows more without shaping.

Next Row. S1, k4, wrap 1, turn, knit to end.

Next Row. S1, k3, wrap 1, turn, knit to end.

Next Row. S1, k2, wrap 1, turn, knit to end.

Work 8 rows more without shaping.

Next Row. S1, k2, wrap 1, turn, knit to end.

Next Row. S1, k1, wrap 1, turn, knit to end.

Work 8 rows more without shaping.

Next Row. S1, k2, wrap 1, turn, knit to end.

Next Row. S1, k3, wrap 1, turn, knit to end.

Next Row. S1, k4, wrap 1, turn, knit to

end.

Work 4 rows more without shaping.

Next Row. S1, k2, wrap 1, turn, knit to end.

Next Row. S1, k1, wrap 1, turn, knit to end.

Next Row. S1, k2, wrap 1, turn, knit to end.

Next Row. S1, k3, wrap 1, turn, knit to end.

Next Row. S1, k4, wrap 1, turn, knit to end.

Work 2 rows more without shaping.

Next Row. S1, k3, wrap 1, turn, knit to end.

Rep last row twice.

Work 4 rows without shaping.

Next Row. S1, k3, wrap 1, turn, knit to end.

Rep last row twice.

Work 4 rows without shaping.

Cast off knitways. *

D

Work as given for B from ** to **.

Work 3 rows inc 1 st at front edge as before in 1st and foll alt row. 18 sts.

Work 1 row more without shaping.

Next Row. S1, k8, slip rem 9 sts onto a stitch holder. 9 sts.

Next Row. S1, k2tog (back edge), knit to end. 8 sts.

Work 2 rows dec 1 st at back edge as before in every row. 6 sts.

Work 13 rows more without shaping.

Next Row. S1, inc in next st (back edge), knit to end. 7 sts.

Work 2 rows inc 1 st at back edge as before in every row. 9 sts.

Leave these 9 sts on a stitch holder.

With rs facing, rejoin yarn to 9 sts and proceed as follows:- cast off 4 sts, knit to end. 5 sts.

Work 19 rows more without shaping.

Leave these 5 sts on a stitch holder.

With rs facing, rejoin yarn to 9 sts and proceed as follows:- s1, k2tog, knit to end, cast on 4 sts, knit across 5 sts left on a stitch holder. 17 sts.

Work 1 row more without shaping.

Work 4 rows dec 1 st at front edge as before in next and foll alt row. 15 sts.

Complete as given for B from ***.

E

** Using 3¼mm needles and thumb method cast on 18 sts.

Work 8 rows in g-st.

Next Row. Cast off 11 sts, knit to end. 7 sts. **

Work 10 rows more without shaping.

* **Next Row.** S1, k6, cast on 7 sts. 14 sts.

Work 6 rows more without shaping.

Next Row. Cast off 7 sts, knit to end. 7 sts.

Work 10 rows more without shaping.

Next Row. S1, k6, cast on 11 sts. 18 sts.

Work 8 rows more without shaping.

Cast off knitways.

F

Using 3¼mm needles and thumb method cast on 7 sts.

Work 19 rows in g-st.

Complete as given for E from *.

G

Using 3¼mm needles and thumb method cast on 10 sts.

Work 3 rows in g-st.

Next Row. Cast off 2 sts, knit to last 3 sts, cast off 2 sts. 6 sts.

Work 5 rows more in g-st.

Rejoin yarn and work as given for C from * to *.

H

Lower Legs (Make 2)

Using 3¼mm needles and thumb method cast on 7 sts.

Work 18 rows in g-st.

Leave these 7 sts on a stitch holder.

Joining of Legs

With rs facing, rejoin yarn to 7 sts and knit to end, cast on 4 sts, rejoin yarn to 7 sts left on a stitch holder and knit to end. 18 sts.

Work 9 rows more without shaping.

Upper Left

Next Row. S1, k6, slip rem 11 sts onto a stitch holder.

Work 17 rows more without shaping.

Cast off knitways

Upper Right

With rs facing, rejoin yarn to 11 sts left on a stitch holder and proceed as follows:-

cast off 4 sts, knit to end. 7 sts.
Work 17 rows more without shaping.
Cast off knitways.

I
Using 3¼mm needles and thumb method cast on 18 sts.
Work 8 rows in g-st.
Next Row. Cast off 5 sts, k7, cast off 5 sts. 8 sts.
With ws facing rejoin yarn to rem 8 sts and knit to end.
Work 28 rows more without shaping.
Break off yarn, with spare needle cast on 5 sts, k8, cast on 5 sts. 18 sts.
Work 7 rows more without shaping.
Cast off knitways.

J
Using 3¼mm needles and thumb method cast on 6 sts.
Work 1 row in g-st.
Next Row. S1, inc in next st (front edge), knit to last 2 sts, inc in next st (back edge), k1. 8 sts.
Work 2 rows inc 1 st as before at each end of every row. 12 sts.
Work 2 rows inc 1 st as before at front edge in 1st row AT SAME TIME inc 1 st as before at back edge in every row. 15 sts.
Next Row. S1, k7, slip rem 7 sts onto a stitch holder. 8 sts.
Next Row. S1, k2tog, knit to end. 7 sts.
Work 30 rows more without shaping.
Next Row. Cast on 6 sts, k7, cast on 6 sts. 19 sts.
Work 7 rows more without shaping.
Cast off knitways.
With rs facing, rejoin yarn to 7 sts and cast off 1 st, knit to end. 6 sts.
Next Row. S1, k3, k2tog. 5 sts.
Work 6 rows more without shaping.
Cast off knitways.

K
Lower Left Leg
* Using 3¼mm needles and thumb method cast on 7 sts.
Work 2 rows in g-st.
Next Row. S1, k2tog (front edge), k2, inc in next st (back edge), k1. 7 sts.
Next Row. S1, knit to end. *
Work 12 rows dec 1 st at front edge as before in 1st and every foll alt row AT SAME TIME inc 1 st at back edge as before

in 1st and every foll alt row. 7 sts
Leave these 7 sts on a stitch holder.

Lower Right Leg
Using 3¼mm needles and thumb method cast on 6 sts.
Work 16 rows in g-st.
Leave these 6 sts on a stitch holder.

Joining Of Legs And Upper Left Shaping
With rs facing, rejoin yarn to 7 sts left on a stitch holder and proceed as follows:- s1, k2tog, k4, cast on 1 st and knit across 6 sts left on a stitch holder. 13 sts.
Work 1 row more without shaping.
Work 5 rows dec 1 st at outside edge as before in next and every foll alt row. 10 sts.
Work 1 row more without shaping.
Next Row. S1, inc in next st (outside edge), knit to end. 11 sts.
Next Row. S1, knit to end.
Work 4 rows inc 1 st at outside edge as before in next and foll alt row. 13 sts.
Next Row. S1, inc in next st, k4, slip rem 7 sts onto a stitch holder. 7 sts.
Next Row. S1, knit to end.
Next Row. S1, inc in next st (outside edge), k2, k2tog (inside edge), k1. 7 sts.
Next Row. S1, knit to end.
Work 12 rows inc 1 st at outside edge as before in 1st and every foll alt row AT SAME TIME dec 1 st at inside edge as before in 1st and every foll alt row. 7 sts.
Cast off knitways.

Upper Right
With rs facing, rejoin yarn to rem 7 sts and cast off 1 st, knit to end. 6 sts.
Work 15 rows more without shaping.
Cast off knitways.

L
Work a given for E from ** to **.
Work 37 rows more without shaping.
Cast off knitways.
M
Lower Legs (Make 2)
Using 3¼mm needles and thumb method cast on 6 sts.
Work 28 rows in g-st.
Leave these 6 sts on a stitch holder.

Centre Point
Using 3¼mm needles and thumb method cast on 4 sts.
Work 4 rows in g-st.
Next Row. S1, (inc in next st) twice, k1. 6 sts.
Work 1 row more without shaping.
Work 2 rows inc 1 st at each end of 1st row. 8 sts.
Leave these 8 sts on a stitch holder.

Joining of Legs and Centre Point
With rs facing, rejoin yarn and knit across 6 sts left on a stitch holder for leg, cast on 1 st and knit across 8 sts of centre point, cast on 1 st and knit across 6 sts left on a stitch holder for leg. 22 sts.
Work 5 rows more without shaping.

Upper Left
Next Row. S1, k9, slip rem 12 sts onto a stitch holder. 10 sts.
Work 3 rows more without shaping.
Next Row. S1, knit to last 3 sts, k2tog (inside edge), k1. 9 sts.
Work 3 rows more without shaping.
Rep the last 4 rows once more. 8 sts.
Cast off knitways.

Upper Right
With rs facing, rejoin yarn to rem 12 sts left on a stitch holder and proceed as follows:- cast off 2 sts, knit to end. 10 sts.
Work 3 rows more without shaping.
Next Row. S1, k2tog (inside edge), knit to end. 9 sts.
Work 3 rows more without shaping.
Rep the last 4 rows once more. 8 sts.
Cast off knitways.

N
Left Leg
Using 3¼mm needles and thumb method cast on 6 sts.
Work 4 rows in g-st.
Next Row. S1, knit to last 2 sts, inc in next st (back edge), k1. 7 sts.
Work 3 rows more without shaping.
Rep last 4 rows twice. 9 sts.
Work 8 rows inc 1 st at back edge as before in next and every foll alt row. 13 sts.
Leave these 13 sts on a stitch holder.

Right Leg

Using 3¼mm needles and thumb method cast on 6 sts.

Work 28 rows in g-st.

Leave these 6 sts on a stitch holder.

Divide For Centre

Next Row. Work across 13 sts left on a stitch holder as follows:- s1, k5, leave rem 7 sts on a stitch holder. 6 sts.

With rs facing, rejoin yarn and proceed as follows:-

Work 21 rows more without shaping.

Cast off knitways.

With rs facing rejoin yarn to rem 7 sts left on a stitch holder and proceed as follows:- cast off 1 st, knit to last 2 sts, inc in next st, k1. 7 sts.

Work 1 row more without shaping.

Next Row. S1, k2tog (front edge), k2, inc in next st (back edge), k1. 7 sts.

Work 1 row more without shaping.

Next Row. S1, k2tog, k4, cast on 1 st and knit across 6 sts left on a stitch holder. 13 sts.

Next Row. S1, knit to end.

Work 4 rows dec 1 st at front edge as before in next and foll alt row. 11 sts.

Work 12 rows dec 1 st at front edge as before in next and every foll 4th row. 8 sts.

Cast off knitways.

O

Using 3¼mm needles and thumb method cast on 4 sts.

Work 1 row in g-st.

Next Row. S1, inc in next st (back edge), inc in next st (front edge), k1. 6 sts.

Work 2 rows inc 1 st at each end as before in every row. 10 sts.

Work 6 rows inc 1 st at each end as before in next and every foll alt row. 16 sts.

Left Side

Next Row. S1, k5, slip rem 10 sts onto a stitch holder. 6 sts.

Next Row. S1, knit to end.

Next Row. S1, inc in next st (front edge), k1, k2tog (back edge), k1. 6 sts.

Work 4 rows inc 1 st at front edge as before in 4th row AT SAME TIME dec 1 st at back edge as before in 4th row. 6 sts.

*** Work 13 rows more without shaping.

Next Row. S1, k2tog (front edge), k1, inc in next st (back edge), k1. 6 sts.

Work 5 rows dec 1 st at front edge as before in 4th row AT SAME TIME inc 1 st at back edge as before in 4th row. 6 sts.

Leave these 6 sts on a stitch holder. ***

Right Side

With rs facing, rejoin yarn to 10 sts, cast off 4 sts and knit to end. 6 sts.

**** Work 1 row more without shaping.

Next Row. S1, k2tog (front edge), k1, inc in next st (back edge), k1. 6 sts.

Work 4 rows dec 1 st at front edge as before in 4th row AT SAME TIME inc 1 st at back edge as before in 4th row. 6 sts.

Work 13 rows more without shaping.

Next Row. S1, inc in next st (front edge), k1, k2tog (back edge), k1. 6 sts.

Work 5 rows inc 1 st at front edge as before in 4th row AT SAME TIME dec 1 st at back edge as before in 4th row. 6 sts.

Leave these 6 sts on a stitch holder.

With rs facing, rejoin yarn to 6 sts left on a stitch holder for left side and proceed as follows:- knit across 6 sts, cast on 4 sts and knit across rem 6 sts left on a stitch holder for right side. 16 sts.

Work 1 row more without shaping.

Work 4 rows dec 1 st at each end of next and foll alt row. 12 sts.

Work 4 rows dec 1 st at each end of every row. 4 sts.

Cast off knitways.

P

Using 3¼mm needles and thumb method cast on 6 sts.

Work 23 rows in g-st.

Next Row. S1, k5, cast on 6 sts. 12 sts.

** **Next Row.** S1, inc in next st (front edge), knit to end. 13 sts.

Work 1 row inc 1 st at front edge as before. 14 sts.

Work 4 rows inc 1 st at front edge as before in next and foll 3rd row. 16 sts.

Work as given for B from * to *.

Work 4 rows dec 1 st at front edge as before in next and foll alt row. 13 sts.

Work 2 rows dec 1 st at front edge as before in every row. 11 sts.

Cast off rem 11 sts knitways.

Q

Using 3¼mm needles and thumb method cast on 5 sts.

Work 4 rows in g-st.

Leave these 5 sts on a stitch holder.

Using 3¼mm needles and thumb method cast on 4 sts.

Work 1 row in g-st.

Next Row. S1, inc in next st (back edge), inc in next st (front edge), k1. 6 sts.

Work 1 row inc 1 st as before at each end of row. 8 sts.

Next Row. S1, inc in next st (back edge), knit to end. 9 sts.

Leave these 9 sts on a stitch holder.

With rs facing, rejoin yarn to rem 5 sts left on a stitch holder and proceed as follows:- knit to end, cast on 1 st, knit across rem 9 sts left on a stitch holder as follows:- knit to last 2 sts, inc in next st, k1. 16 sts.

Work 3 rows inc 1 st at back edge as before in 2nd row. 17 sts.

Next Row. Cast off 2 sts, knit to last 2 sts, inc in next st, k1. 16 sts.

Work 1 row more without shaping.

Left Side

Next Row. S1, k7, slip next 8 sts onto a stitch holder. 8 sts.

Work 1 row more without shaping.

Next Row. S1, inc in next st (front edge), knit to end. 9 sts.

Work 2 rows more without shaping.

Next Row. Cast off 4 sts, knit to end. 5 sts.

Work 1 row inc 1 st as before at front edge of row. 6 sts.

Work as given for Left Side of O from *** to ***.

Right Side

With rs facing, rejoin yarn to 8 sts left on stitch holder and proceed as follows:- cast off 2 sts and knit to end. 6 sts.

Complete as given for Right Side of O from ****.

R

Lower Left Leg

Work as given for Lower Left Leg of K from * to *

Work 8 rows dec 1 st at front edge as before in next and every foll alt row AT

SAME TIME inc 1 st at back edge as before in next and every foll alt row. 7 sts

Work 4 rows dec 1 st at front edge as before in next and foll alt row AT SAME TIME inc 1 st at back edge as before in next row.

6 sts.

Work 4 rows dec 1 st at front edge as before in next row AT SAME TIME inc 1 st at back edge as before in next row. 6 sts.
Leave these 6 sts on a stitch holder.

Lower Right Leg

Using 3¼mm needles and thumb method cast on 6 sts.

Work 20 rows in g-st.

Leave these 6 sts on a stitch holder.

Joining Of Legs

With rs facing, rejoin yarn to 6 sts left on a stitch holder for lower left leg and proceed as follows:- s1, k2tog, k3, cast on 1 st, knit across 6 sts left on a stitch holder for lower right leg and knit to end. 12 sts.

Work 3 rows more without shaping.

Complete as given for P from **.

S

Using 3¼mm needles and thumb method cast on 6 sts.

Work 5 rows in g-st.

* **Next Row.** S1, k4, wrap 1, turn, knit to end.

Next Row. S1, k3, wrap 1, turn, knit to end.

Next Row. S1, k2, wrap 1, turn, knit to end.

Next Row. S1, k1, wrap 1, turn, knit to end. *

Work 2 rows more without shaping.

Rep from * to * once more.

Work 4 rows more without shaping.

Rep from * to * once more.

Work 2 rows more without shaping.

Rep from * to * once more.

Work 4 rows more without shaping.

Next Row. S1, k3, wrap 1, turn, knit to end.

Next Row. S1, k2, wrap 1, turn, knit to end.

Next Row. S1, k1, wrap 1, turn, knit to end.

Work 9 rows more without shaping.

Next Row. S1, k3, wrap 1, turn, knit to end.

Next Row. S1, k2, wrap 1, turn, knit to end.

Next Row. S1, k1, wrap 1, turn, knit to end.

** Work 4 rows more without shaping.

Rep from * to * once more.

Work 2 rows more without shaping.

Rep from * to * once more. **

Rep from ** to ** once more.

Work 4 rows more without shaping.

Rep from * to * once more.

Work 2 rows more without shaping.

Cast off knitways.

T

Using 3¼mm needles and thumb method cast on 8 sts.

Work 38 rows in g-st.

Break off yarn, with spare needle cast on 7 sts, k8, cast on 7 sts. 22 sts.

Work 7 rows more without shaping.

Cast off knitways.

U

Using 3¼mm needles and thumb method cast on 12 sts.

Work 1 row in g-st.

Next Row. S1, inc in next st (back edge), knit to last 2 sts, inc in next st (front edge), k1. 14 sts.

Work 4 rows inc 1 st at each end of every row. 22 sts.

Work 8 rows more without shaping.

Next Row. S1, k9, slip next 12 sts onto a stitch holder. 10 sts.

Work 1 row without shaping.

Next Row. S1, knit to last 3 sts, k2tog (back edge), k1. 9 sts.

Work 4 rows dec 1 st at back edge as before in 2nd and foll 4th row. 7 sts.

Work 25 rows more without shaping.

Cast off knitways.

With rs facing, rejoin yarn to rem 12 sts, cast off 2 sts, knit to end. 10 sts.

Work 1 row more without shaping.

Next Row. S1, k2tog (front edge), knit to end. 9 sts.

Work 4 rows dec 1 st at front edge as before in 2nd and foll alt row. 7 sts.

Work 25 rows more without shaping.

Cast off knitways.

V

Using 3¼mm needles and thumb method cast on 4 sts.

Work 2 rows in g-st.

Next Row. S1, inc in next st (front edge), inc in next st (back edge), k1. 6 sts.

Work 5 rows more without shaping.

Work 12 rows more inc 1 st as before at each end of next and every foll 6th row. 10 sts.

Next Row. S1, inc in next st, k2, slip rem 6 sts onto a stitch holder. 5 sts.

Work 3 rows more without shaping.

Work 4 rows inc 1 st at front edge in 1st row. 6 sts.

Next Row. S1, inc in next st (front edge), k1, k2tog (back edge), k1. 6 sts.

Work 8 rows inc 1 st at front edge as before in 4th and foll 4th row AT SAME TIME dec 1 st at back edge as before in 8th row. 7 sts.

Work 1 row more without shaping.

Work 1 row inc 1 st at front edge as before. 8 sts.

Work 7 rows more without shaping.

Cast off knitways.

With rs facing, rejoin yarn to 6 sts left on a stitch holder and proceed as follows:- cast off 2 sts, k1, inc in next st (back edge), k1. 5 sts.

Work 3 rows more without shaping.

Work 4 rows inc 1 st at back edge as before in next row. 6 sts.

Next Row. S1, k2tog (front edge), k1, inc in next st (back edge), k1. 6 sts.

Work 8 rows dec 1 st at front edge as before in 8th row AT SAME TIME inc 1 st at back edge as before in 4th and foll 4th row. 7 sts.

Work 1 row more without shaping.

Work 1 row inc 1 st at back edge as before. 8 sts.

Work 7 rows more without shaping.

Cast off knitways.

W

Left Leg

* Using 3¼mm needles and thumb method cast on 5 sts.

Work 4 rows in g-st. *

Next Row. S1, inc in next st (front edge), knit to end. 6 sts.

Work 3 rows more without shaping.

Next Row. S1, knit to last 2 sts, inc in

next st (back edge), k1. 7 sts.
Work 9 rows more without shaping.
Work 4 rows inc 1 st at back edge in next row AT SAME TIME inc 1 st at front edge in 4th row. 9 sts.
Leave these 9 sts on a stitch holder.

Right Leg

Work as given for Left Leg of W from * to *.

Next Row. S1, knit to last 2 sts, inc in next st (back edge), k1. 6 sts.

Work 3 rows more without shaping.

Next Row. S1, inc in next st (front edge), knit to end. 7 sts.

Work 9 rows more without shaping.

Work 4 rows inc 1 st at front edge in next row AT SAME TIME inc 1 st at back edge in 4th row. 9 sts.

Leave these 9 sts on a stitch holder.

Joining Of Legs

With rs facing, rejoin yarn to 9 sts left on a stitch holder for left leg and knit to end, cast on 1 st, knit across 9 sts left on a stitch holder for right leg. 19 sts.

Work 3 rows more without shaping.

Next Row. S1, k5, leave rem 13 sts on a stitch holder. 6 sts.

Work 5 rows more without shaping.

Next Row. S1, knit to last 3 sts, k2tog (back edge), k1. 5 sts.

Work 2 rows more without shaping.

Next Row. S1, knit to last 2 sts, inc in next st, k1. 6 sts.

Work 10 rows dec 1 st at back edge in 5th row. 5 sts.

Cast off knitways.

With rs facing, rejoin yarn to 13 sts left on a stitch holder and proceed as follows:- cast off 1 st, k4 and leave rem 7 sts on a stitch holder. 5 sts.

Work 4 rows more.

Cast off knitways.

With rs facing, rejoin yarn to rem 7 sts left on a stitch holder and proceed as follows:- cast off 1 st and knit to end. 6 sts.

Work 5 rows more without shaping.

Next Row. S1, k2tog (front edge), knit to end. 5 sts.

Work 2 rows more without shaping.

Next Row. S1, inc in next st, knit to end. 6 sts.

Work 10 rows dec 1 st at front edge in 5th row. 5 sts.

Cast off knitways.

X

Left Leg

* Using 3¼mm needles and thumb method cast on 7 sts.

Work 4 rows in g-st. *

Next Row. S1, k2tog (front edge), knit to last 2 sts, inc in next st (back edge), k1. 7 sts.

Work 15 rows dec 1 st at front edge as before in 4th and every foll 4th row AT SAME TIME inc 1 st at back edge as before in 6th and foll 6th row. 6 sts.

Leave these 6 sts on a stitch holder.

Right Leg

Work as given for Left Leg of X from * to *.

Next Row. S1, inc in next st (front edge), knit to last 3 sts, k2tog (back edge), k1. 7 sts.

Work 15 rows dec 1 st at back edge as before in 4th and every foll 4th row AT SAME TIME inc 1 st at front edge as before in 6th and foll 6th row. 6 sts.

Leave these 6 sts on a stitch holder.

Joining Of Legs

With rs facing, rejoin yarn to 6 sts left on a stitch holder for left leg and proceed as follows:- s1, k2tog, knit to end, cast on 2 sts, knit across 6 sts left on a stitch holder for right leg as follows:- k3, k2tog, k1. 12 sts.

Work 5 rows more without shaping.

**** Next Row.** S1, inc in next st, k3, slip rem 7 sts onto a stitch holder. 6 sts.

Work 3 rows more without shaping.

Next Row. S1, inc in next st (front edge), k1, k2tog (back edge), k1. 6 sts.

Work 15 rows inc 1 st at front edge as before in every foll 4th row AT SAME TIME dec 1 st at back edge as before in 6th and foll 6th row. 7 sts.

Cast off knitways.

With rs facing, rejoin yarn to rem 7 sts, cast off 2 sts, knit to last 2 sts, inc in next st, k1. 6 sts.

Work 3 rows more without shaping.

Next Row. S1, k2tog (front edge), k1, inc in next st, k1. 6 sts.

Work 15 rows inc 1 st at back edge as before in every foll 4th row AT SAME TIME

dec 1 st at front edge as before in 6th and foll 6th row. 7 sts.

Cast off knitways.

Y

Using 3¼mm needles and thumb method cast on 8 sts.

Work 18 rows in g-st.

Next Row. S1, inc in next st, knit to last 2 sts, inc in next st, k1. 10 sts.

Work 3 rows more without shaping.

Work 4 rows inc 1 st as before at each end of next row. 12 sts.

Work as given for X from **.

Z

Using 3¼mm needles and thumb method cast on 20 sts.

Work 10 rows in g-st.

Next Row. Cast off 11 sts, knit to end. 9 sts.

Work 1 row more without shaping.

Next Row. S1, inc in next st (front edge), knit to end. 10 sts.

Work 3 rows inc 1 st at front edge as before in 2nd row. 11 sts.

Next Row. S1, inc in next st (front edge), knit to last 3 sts, k2tog (back edge), k1. 11 sts.

Work 11 rows inc 1 st at front edge as before in 2nd and every foll alt row AT SAME TIME dec 1 st at back edge in 2nd and every foll alt row. 11 sts.

Work 2 rows inc 1 st at front edge as before in every row AT SAME TIME dec 1 st at back edge as before in next row. 12 sts.

Work 4 rows dec 1 st at back edge as before in next and foll alt row AT SAME TIME inc 1 st at front edge in next row. 11 sts.

Work 2 rows dec 1 st at back edge only as before in every row. 9 sts.

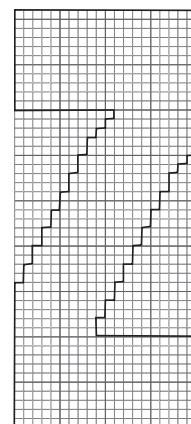
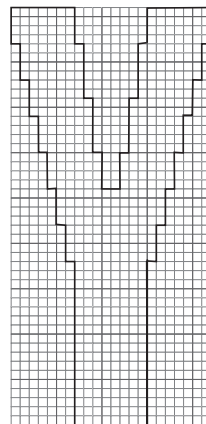
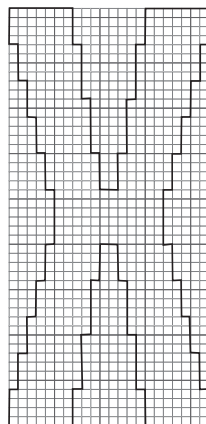
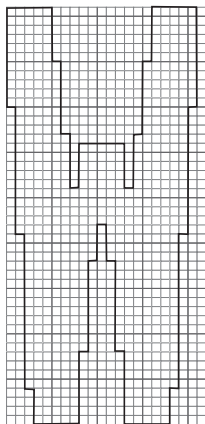
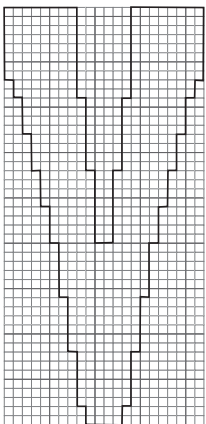
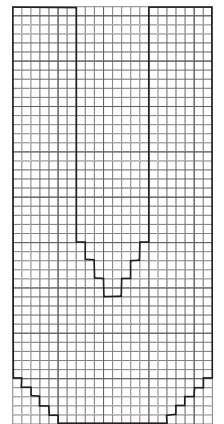
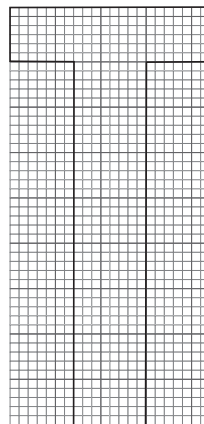
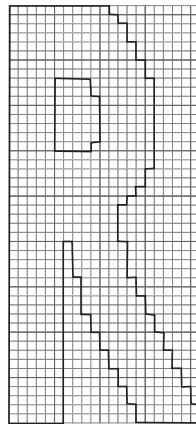
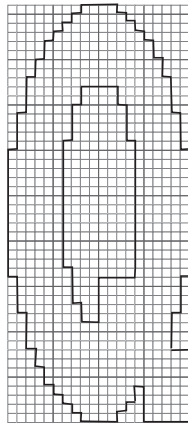
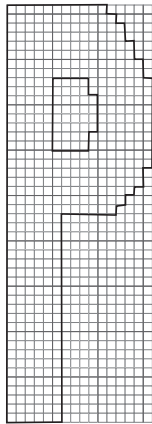
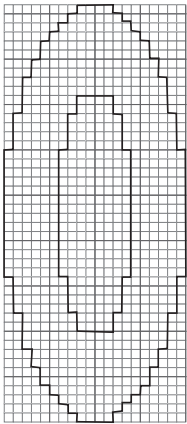
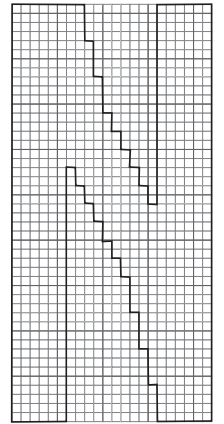
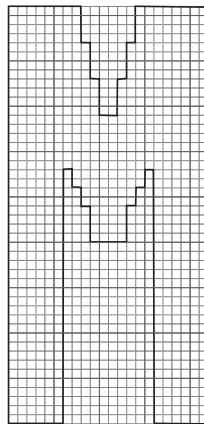
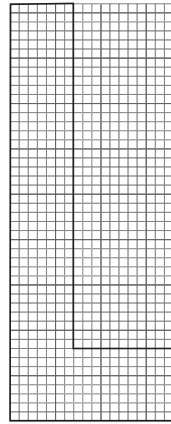
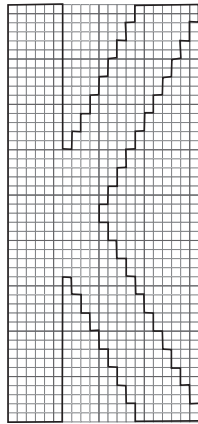
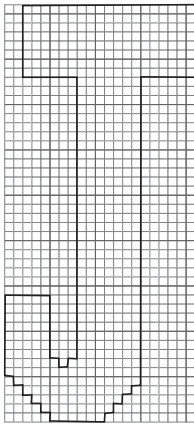
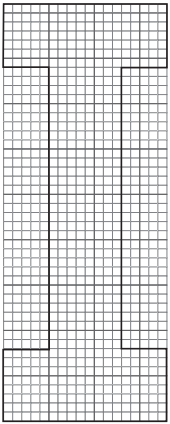
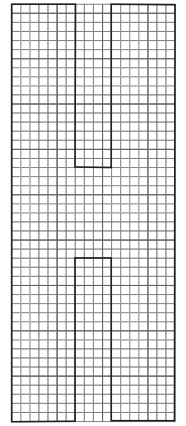
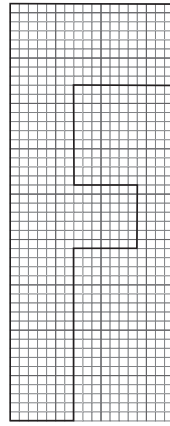
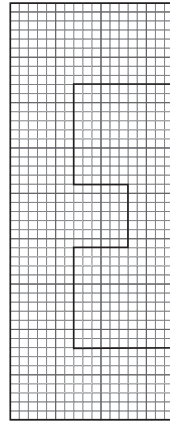
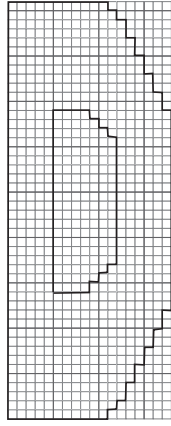
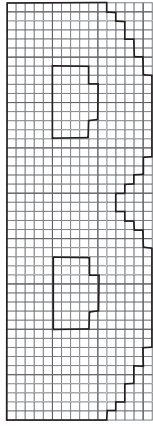
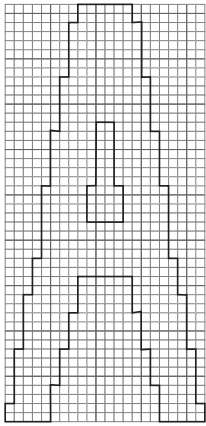
Next Row. S1, knit to end, cast on 11 sts. 20 sts.

Work 9 rows more without shaping.

Cast off knitways.

TO MAKE UP

Make a twisted cord according to size of your word. Using iron on interfacing make a stencil of letters, iron on the interfacing to back of letters. Sew letters to cord as the words are spelt leaving an even space of approximately 3cm, (1¼in) between each letter.



CAFETIÈRE COSY in HAYFIELD BONUS DK

MEASUREMENTS

CAFETIÈRE COSY Length of circumference to fit your Cafetière

MATERIALS

Weights in grammes are approximate

Cafetière Cosy

F013 Hayfield Bonus DK shade 669

50g

The yarn amounts are based on average requirements when specified tension and yarn is used.

You will also need 1 Pair of 4mm (UK8 – USA6) Knitting Needles and 1 Pair of 3¼mm (UK10 – USA3) Knitting Needles and 1 Button.

ABBREVIATIONS

alt alternate, **cm** centimetres, **cont** continue, **dec** decrease(ing), **DK** double knitting, **fol** following, **g** grammes, **in** inch(es), **inc** increase(ing), **k** knit, **mm** millimetre, **p2sso** pass 2 slipped stitches over, **patt** pattern, **p** purl, **rem** remain(ing), **rep** repeat, **rs** right side, **s2** slip 2 stitches knitways, **st(s)** stitch(es), **tog** together, **ws** wrong side.

MB1 make bobble (k1, p1, k1, p1) all into next st, turn, p4, turn, s2, k2tog, p2sso. Bobble completed.

CAFETIÈRE COSY

(Worked sideways)

TENSION

20 sts and 24 rows to 10cm, (4in) over diamond pattern on 4mm needles or the size required to give correct tension. Check your tension – if less stitches use a thinner needle, if more use a thicker needle.

IT IS ESSENTIAL TO WORK TO THE STATED TENSION TO ENSURE SUCCESS.

Using 3¼mm needles and thumb method cast on 35 sts.

1st Row. P1, * k1, p1, rep from * to end.

2nd Row. * K1, p1, rep from * to last st, k1.

These 2 rows will now be referred to as

1x1 rib.

Work 3 rows more in 1x1 rib.

6th Row. P1, * p2tog, p3, p2tog, p2, p2tog, p3, p2tog, * p1, rep from * to * once, p1. 27 sts.

Change to 4mm needles and proceed as follows:-

1st Row. K1, * k3, MB1, k2, rep from * to last 2 sts, k2.

2nd and Every Alt Row. Purl.

3rd Row. K1, * k2, MB1, k1, MB1, k1, rep

from * to last 2 sts, k2.

5th Row. K1, * k1, MB1, k3, MB1, rep from * to last 2 sts, k2.

7th Row. K1, * MB1, k5, rep from * to last 2 sts, MB1, k1.

9th Row. K1, * k1, MB1, k3, MB1, rep from * to last 2 sts, k2.

11th Row. K1, * k2, MB1, k1, MB1, k1, rep from * to last 2 sts, k2.

12th Row. Purl.

From 1st to 12th row sets patt.

Keeping continuity of patt as set, cont in patt until work is long enough to go around circumference of Cafetière minus 6cm, (2½in), (which is 2cm, (¾in) for rib allowance plus 4cm, (1½in) for gap below handle), ending with 1st row of patt.

Change to 3¼mm needles and proceed as follows:-

Next Row. P1, * inc in next st purlways, p3, inc in next st purlways, p2, inc in next st purlways, p3, inc in next st purlways, * p1, rep from * to * once, p1. 35 sts.

Starting with 1st row of 1x1 rib work 6 rows.

Buttonhole Tab

Next Row. Cast off 12 sts in rib, rib 10,

cast off rem 12 sts in rib. 11 sts.

Rejoin yarn to 11 sts and rib until tab measures 3cm, (1¼in), ending with a rs row.

Next Row. K1, (p1, k1) twice, k2tog, (p1, k1) twice. 10 sts.

Next Row. (P1, k1) twice, (p1, k1) into back and front of next st, p1, (k1, p1) twice. 11sts.

Cont in rib until tab measures 5cm, (2in) from cast off sts, ending with a ws row.

Cast off in rib.

Rib Edges (Both alike)

With rs of work facing, using 3¼mm needles pick up and knit 6 sts evenly along rib, 47 sts evenly along patt edge and 6 sts evenly along rib. 59 sts.

(Adjust the number of sts if cafetière is wider or narrower, odd sts needed).

Starting with 1st row of 1x1 rib work 5 rows.

Cast off in rib.

TO COMPLETE

Sew button in position. Cover with a damp cloth and leave until dry. See ball band for washing and further care instructions.

CUSHIONS in HAYFIELD BONUS DK

MEASUREMENTS

Granny Square Cushion (crochet)	41x41	cm
(approximately)	16x16	in
The Mitred Square Cushion	41x41	cm
(approximately)	16x16	in
Cable and Bobble Cushion	43x43	cm
(approximately)	17x17	in
Union Jack Cushion	56x35	cm
(approximately)	22x13¾	in

MATERIALS

Weights in grammes are approximate

Granny Square Cushion (Crochet)

F013 Hayfield Bonus DK

Colour A shade 698	1	100g ball
Colour B shade 971	1	100g ball
Colour C shade 812	1	100g ball

The Mitred Square Cushion

F013 Hayfield Bonus DK

Colour A shade 698	2	100g ball
Colour B shade 971		30g
Colour C shade 812	1	100g ball

Cable and Bobble Cushion

F013 Hayfield Bonus DK shade 698	2	100g ball
----------------------------------	---	-----------

Union Jack Cushion

F013 Hayfield Bonus DK

Colour A shade 698	1	100g ball
Colour B shade 812	1	100g ball
Colour C shade 971	1	100g ball

The yarn amounts are based on average requirements when specified tension and yarn is used.

You will also need 1 4.00 (UK8 – USAF/5) Crochet hook for Granny Square Cushion, 1 Pair of 4mm (UK8 – USA6) Knitting Needles for The Mitred Square Cushion, Cable and Bobble Cushion and Union Jack Cushion.

1 4mm (UK8 – USA6) 80cm circular needle if required for The Mitred Square Cushion.

36cm, (14in) Zip fastener for Granny Square Cushion, The Mitred Square Cushion and Cable and Bobble Cushion. 48cm, (19in) Zip fastener for Union Jack Cushion.

ABBREVIATIONS

alt alternate, **ch** chain, **cm** centimetres, **CN** cable needle, **cont** continue, **dec** decrease(ing), **dc** double crochet, **fol** following, **g** grammes, **in** inch(es), **k** knit, **mm** millimetres, **patt** pattern, **p** purl, **rnd** round, **rem** remain(ing), **rep** repeat, **rs** right side, **ss** slip stitch, **s1p** slip 1 stitch purlways, **sp** space, **st(s)** stitch(es), **tog** together, **tr** treble, **ws** wrong side, **ybk** yarn back, **yoh** yarn over hook.

Tr2tog (yoh, insert hook into next tr, yoh and draw through, yoh and draw through 2 loops) twice, yoh and draw through all loops.

Tr3tog (yoh, insert hook into next tr, yoh and draw through, yoh and draw through 2 loops) 3 times, yoh and draw through all loops.

T3F slip next 2 sts to front on CN, p1 then k2 from CN.

T3B slip next st to back on CN, k2 then p1 from CN.

T4F slip next 2 sts to front on CN, p2 then k2 from CN.

T4B slip next 2 sts to back on CN, k2 then p2 from CN.

MB (make bobble) (K1, p1, k1, p1) into next st, turn, p4, turn, k4, turn, (p2tog) twice, k2tog. Bobble completed.

GRANNY SQUARE CUSHION

Tension

1 square to measure 9cm, (3½in) on 4.00 crochet hook or the size required to give correct tension. 17ch and 22 rows to 10cm, (4in) on 4.00 crochet hook or the size required to give the correct tension. Check your tension – if less stitches use a thinner hook, if more use a thicker hook.

IT IS ESSENTIAL TO WORK TO THE STATED TENSION TO ENSURE SUCCESS.

FRONT OF CUSHION (Make 16 squares)

Using a 4.00 crochet hook and A make 6 ch, ss into first ch to form a ring.

1st Rnd. 3ch (counts as 1 tr), tr2tog into ring, (3ch, tr3tog into ring, 2ch,

tr3tog into ring) 3 times, 3ch, tr3tog into ring, 2ch, change to B, ss into top of 3rd ch.

2nd Rnd. Ss into 3ch sp, 3ch, tr2tog into 3ch sp, (3ch, tr3tog into same sp, 1ch, 3tr into 2ch sp, 1ch, tr3tog into next 3ch sp) 3 times, 3ch, tr3tog into same sp, 1ch, 3tr into 2ch sp, 1ch, change to C, ss into top of 3rd ch.

3rd Rnd. Ss into 3ch sp, 3ch, tr2tog into 3ch sp, (3ch, tr3tog into same sp, 2ch, 1tr into 1ch sp, 1tr into each of next 3tr, 1tr into 1ch sp, 2ch, tr3tog into next 3ch sp) 3 times, 3ch, tr3tog into same sp, 2ch, 1tr into 1ch sp, 1tr into each of next 3 tr, 1tr into 1ch sp, 2ch, ss into top of 3rd ch.
Fasten off.

BACK OF CUSHION

(Worked in dc)

Using 4.00 crochet hook and B make 71 ch.

Foundation Row. (rs) 1dc into 2nd ch from hook, 1dc into each ch to end. 70 ch, turn.

1st Row. 1ch, (1ch counts as 1dc), 1dc into each dc to end, turn.

Rep 1st row until back of cushion measures 41cm, (16in), ending with a ws row. Fasten off.

BORDER

(Worked in dc)

Join squares together as shown in diagram.

Using 4.00 crochet hook and A.

1st Rnd. Starting at bottom right work (57dc, 3dc into corner) 4 times. 240dc. Ss into 1st dc.

2nd Rnd. (58dc, 3dc into next dc) 4 times, ss into 1st dc. 244dc.

Work in rounds as before until border measures approximately 3cm, (1¼in). Fasten off.

TO MAKE UP

Join top, bottom and one side edge seam. Sew zip fastener into side edge of cushion. Pin out cushion to the measurement given. Cover with a damp cloth and leave until dry. See ball band

for washing and further care instructions.

THE MITRED SQUARE CUSHION

(Back and Front Both alike)

Tension

21 sts and 41 rows to 10cm, (4in) over garter stitch on 4mm needles or the size required to give the correct tension.

IT IS ESSENTIAL TO WORK TO THE STATED TENSION TO ENSURE SUCCESS.

Using 4mm needles or a 4mm circular needle, thumb method and A cast on 349 sts.

1st Row. (rs) Knit.

This row will now be referred to as **g-st** (garner stitch).

Keeping continuity of g-st (throughout) proceed as follows:-

2nd Row. K1, (k2tog, k82, k2tog, k1) 4 times. 341 sts.

3rd and Every Alt Row. Knit.

4th Row. K1, (k2tog, k80, k2tog, k1) 4 times. 333 sts.

Work 22 rows more dec 8 sts as before in 2nd and every foll alt row. 245 sts.

Change to B and work 6 rows dec as before in 2nd and every foll alt row. 221 sts.

Change to C and work 48 rows dec as before in 2nd and every foll alt row. 29 sts.

Next Row. K1, (k2tog, k2, k2tog, k1) 4 times. 21 sts.

Next Row. Knit.

Next Row. K1, (k2tog twice, k1) 4 times. 13 sts.

Next Row. Knit.

Next Row. K1, (k2tog, k1) 4 times. 9 sts.

Break off yarn, run yarn through rem sts, draw up and fasten off.

TO MAKE UP

Join diagonal seam. Sew top, bottom and one side edge seam. Sew zip fastener into side edge of cushion. Pin out cushion to measurement given. Cover with a damp cloth and leave until dry. See ball band for washing and further care instructions.

CABLE AND BOBBLE CUSHION

(Back and Front Both alike)

Tension

23 sts and 28 rows to 10cm, (4in) over Bobble Pattern on 4mm needles or the size required to give the correct tension
IT IS ESSENTIAL TO WORK TO THE STATED TENSION TO ENSURE SUCCESS.

Using 4mm needles and thumb method cast on 95 sts.

1st Row. P15, (T3F, p5, T3B, p16) twice, T3F, p5, T3B, p15.

2nd Row. K16, (p2, k5, p2, k18) twice, p2, k5, p2, k16.

3rd Row. P16, (T4F, MB, T4B, p18) twice, T4F, MB, T4B, p16.

4th Row. K18, (p2, k1, p2, k22) twice, p2, k1, p2, k18.

5th Row. P17, (MB, k2, MB, k2, MB, p20) twice, MB, k2, MB, k2, MB, p17.

6th Row. As 4th Row.

7th Row. P16, (T4B, p1, T4F, p18) twice, T4B, p1, T4F, p16.

8th Row. As 2nd Row.

9th Row. P15, (T3B, p2, MB, p2, T3F, p16) twice, T3B, p2, MB, p2, T3F, p15.

10th Row. K15, (p2, k7, p2, k16) twice, p2, k7, p2, k15.

11th Row. P14, (T3B, p7, T3F, p14) twice, T3B, p7, T3F, p14.

12th Row. K14, (p2, k9, p2, k14) twice, p2, k9, p2, k14.

13th Row. P14, (k2, p9, k2, p14) twice, k2, p9, k2, p14.

14th Row. As 12th row.

15th Row. As 13th row.

16th Row. As 12th row.

17th Row. As 13th row.

18th Row. As 12th row.

19th Row. As 13th row.

20th Row. As 12th row.

21st Row. P14, (T3F, p7, T3B, p14) twice, T3F, p7, T3B, p14.

22nd Row. K15, (p2, k7, p2, k16) twice, p2, k7, p2, k15.

From 1st to 22nd row sets reversed stocking stitch and Bobble Patt.

Rep from 1st to 22nd row 4 times more then from 1st to 10th row once. Cast off in patt.

TO MAKE UP

Join top, bottom and one side edge. Sew zip fastener into the side edge of cushion. Pin out cushion to the measurement given. Cover with a damp cloth and leave until dry. See ball band for washing and further care instructions.

UNION JACK CUSHION (Back and Front Both alike)

Tension

22 sts and 28 rows to 10cm, (4in) over stocking stitch (**1st Row. Knit, 2nd Row. Purl**) on 4mm needles or the size

required to give correct tension.

IT IS ESSENTIAL TO WORK TO THE STATED TENSION TO ENSURE SUCCESS.

Intarsia When working with different balls of yarn the colour to be used should be twisted round the colour just used to link the colours together and avoid holes.

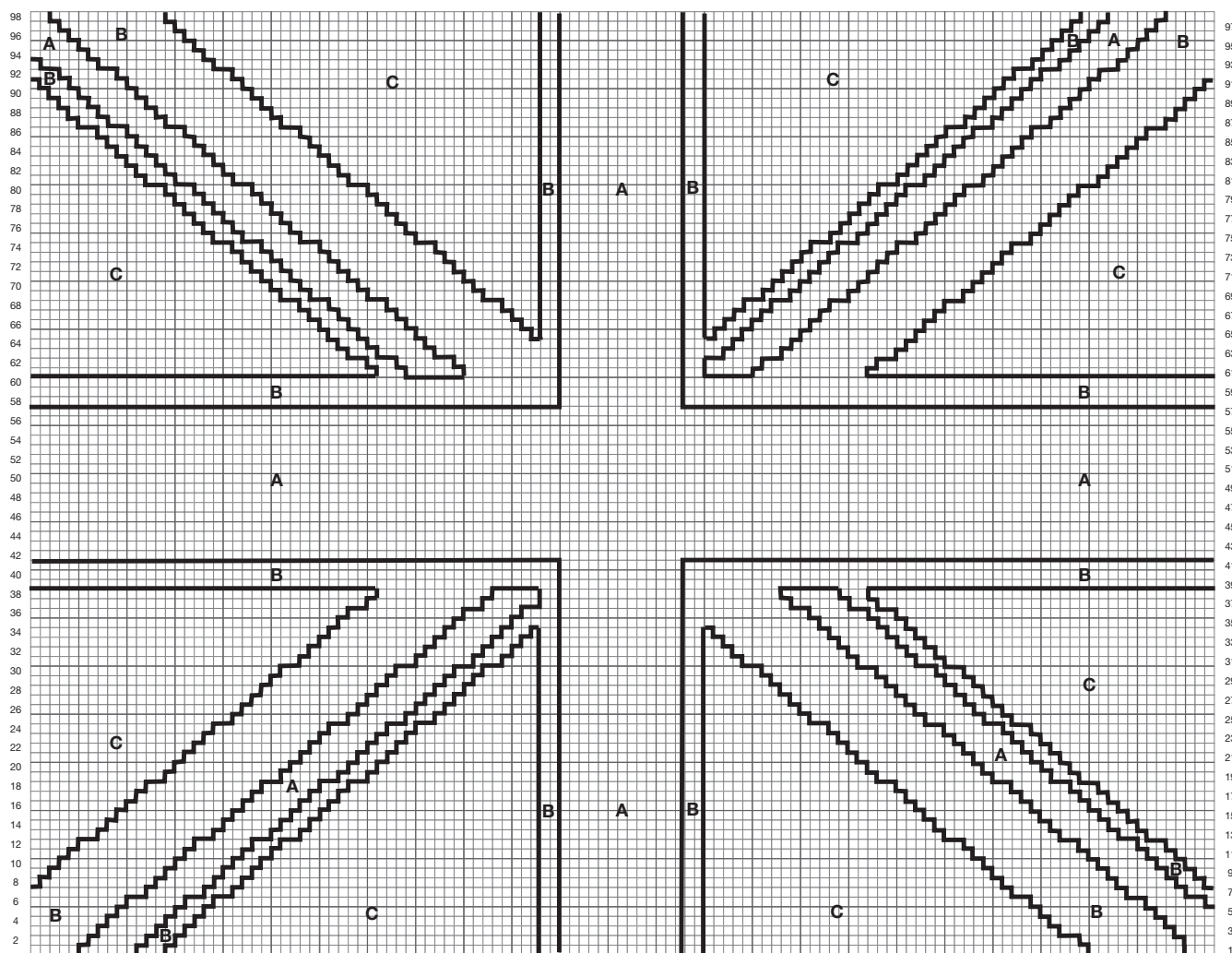
Using 4mm needles, thumb method and A, cast on 123 sts.

Working from 1st to 98th row of chart proceed as follows:-

Working odd rows from right to left of chart and even rows from left to right. Starting with a knit row and working in colour sequence as given on chart, work from 1st to 98th row of chart. Cast off.

TO MAKE UP

Join top and 2 side edges. Sew zip into bottom edge of cushion. Pin out cushion to the measurement given. Cover with a damp cloth and leave until dry. See ball band for washing and further care instructions.



A = 698 LADYBIRD

B = 812 CREAM

C = 971 NAVY

CROCHET BLANKET in HAYFIELD BONUS DK

MEASUREMENTS

GRANNY SQUARE BLANKET	120 x 117	cm
(approximately)	47¼ x 46	in

MATERIALS

F013 Hayfield Bonus DK

colour A shade 698	3	100g balls
colour B shade 812	2	100g balls
colour C shade 971	3	100g balls

The yarn amounts are based on average requirements when specified tension and yarn is used.
You will also need 1 4.00 (UK8 – USAF/5) Crochet Hook.

ABBREVIATIONS

ch chain, **cm** centimetres, **dc** double crochet, **DK** double knitting, **g** grammes, **in** inch(es), **inc** increase(ing), **k** knit, **mm** millimetres, **rem** remain(ing), **rnd** round, **rep** repeat, **rs** right side, **ss** slip stitch, **sp** space, **st(s)** stitch(es), **tr** treble, **tog** together, **ws** wrong side, **yoh** yarn over hook.

Tr2tog (yoh, insert hook into next tr, yoh and draw through, yoh and draw through 2 loops) twice, yoh and draw through all loops.

Tr3tog (yoh, insert hook into next tr, yoh and draw through, yoh and draw through 2 loops) 3 times, yoh and draw through all loops.

GRANNY SQUARE BLANKET

TENSION

1 square to 9cm, (3½in) on 4.00 crochet hook or the size required to give correct tension. Check your tension – if less stitches use a thinner hook, if more use a thicker hook.

IT IS ESSENTIAL TO WORK TO THE STATED TENSION TO ENSURE SUCCESS.

Square A

Using 4.00 crochet hook and A, make 6ch, ss into 1st ch to form a ring.

1st Rnd. 3ch (3ch count as 1tr), tr2tog into ring, (3ch, tr3tog into ring, 2ch, tr3tog into ring) 3 times, 3ch, tr3tog into ring, 2ch, change to B, ss into top of 3rd ch.

2nd Rnd. Ss into 3ch sp, 3ch, tr2tog into 3ch sp, (3ch, tr3tog into same sp, 1ch, 3tr into 2ch sp, 1ch, tr3tog into

next 3ch sp) 3 times, 3ch, tr3tog into same sp, 1ch, 3tr into 2ch sp, 1ch, change to C, ss into top of 3rd ch.

3rd Rnd. Ss into 3ch sp, 3ch, tr2tog into 3ch sp, (3ch, tr3tog into same sp, 2ch, 1tr into 1ch sp, 1tr into each of next 3tr, 1tr into 1ch sp, 2ch, tr3tog into next 3ch sp) 3 times, 3ch, tr3tog into same sp, 2ch, 1tr into 1ch sp, 1tr into each of next 3tr, 1tr into 1ch sp, 2ch, ss into top of 3rd ch.

Fasten off.

Work 84 squares more.

Square B

Work 84 squares more as follows:-

Work 1st round in B, 2nd round in A and 3rd round in C.

TO MAKE UP

Working in dc (throughout) crochet 1 square A to 1 square B along 1 side edge

then without breaking yarn crochet another square B to another square A along 1 side edge. Cont in this way until you have 13 pairs of squares crocheted together with the squares alternating as shown in diagram. Crochet another row of squares above the last row in the same way and then rep until there are 13 rows of squares, making sure to start at the same side each time a row is worked.

Once all squares are crocheted together widthways, crochet them the same way lengthways.

TO COMPLETE

Work 1 row of dc evenly all round blanket edge working 3 dc into each corner. Pin out Blanket to measurement given. Cover with damp cloths and leave until dry. See ball band for washing and further care instructions.

A	B	A	B	A	B	A	B	A	B	A	B	A
B	A	B	A	B	A	B	A	B	A	B	A	B
A	B	A	B	A	B	A	B	A	B	A	B	A
B	A	B	A	B	A	B	A	B	A	B	A	B
A	B	A	B	A	B	A	B	A	B	A	B	A
B	A	B	A	B	A	B	A	B	A	B	A	B
A	B	A	B	A	B	A	B	A	B	A	B	A
B	A	B	A	B	A	B	A	B	A	B	A	B
A	B	A	B	A	B	A	B	A	B	A	B	A
B	A	B	A	B	A	B	A	B	A	B	A	B
A	B	A	B	A	B	A	B	A	B	A	B	A
B	A	B	A	B	A	B	A	B	A	B	A	B
A	B	A	B	A	B	A	B	A	B	A	B	A

*Celebrate a birthday, a wedding or a
major sporting achievement in
vintage knitting style.*

*The Congratulations Bunting and
Union Jack Cushion Cover.*

CONGRATULATIONS



.....★.....

Vintage Style



We've chosen vintage-inspired red, cream and blue to knit our Union Jack cushion cover – Ladybird 698, Cream 812 and Navy 971. You'll find an easy to follow graph to see where to knit the colours together.

*Try out your first
intarsia project with this splendid
Union Jack cushion cover.*





Here we have three gorgeous cushion designs to mix and match using three stunning techniques.

1) The Crochet Granny Square Cushion in Ladybird 698, Cream 812 and Navy 971.

2) The Mitred Square Cushion (same shades as before).

And 3) The gorgeously plump Cable & Bobble Cushion in Ladybird 698





Everyone needs a vintage crochet throw – create a cosy winter blanket for indoor fireside style or make your favourite garden bench a little more comfy on summer evenings. Roll it up and take it to the cricket or a family picnic. Best of all, Hayfield Bonus DK is easy care and machine washable.

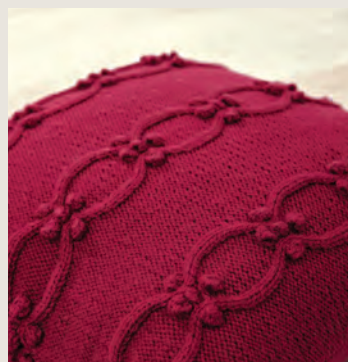
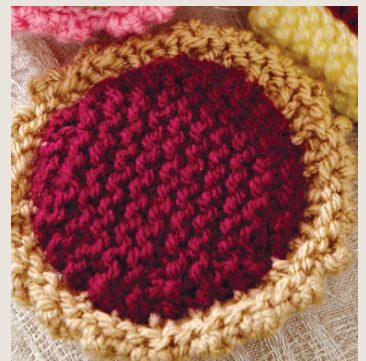




Hayfield

The Iconic Vintage Collection





Sirdar Spinning Limited
Flanshaw Lane, Wakefield,
West Yorkshire WF2 9ND

Telephone: 01924 371501
Facsimile: 01924 290506
Website: www.sirdar.co.uk

Knitting Helpline: 01924 231686
knitting-helpline@sirdar.co.uk

Hayfield

