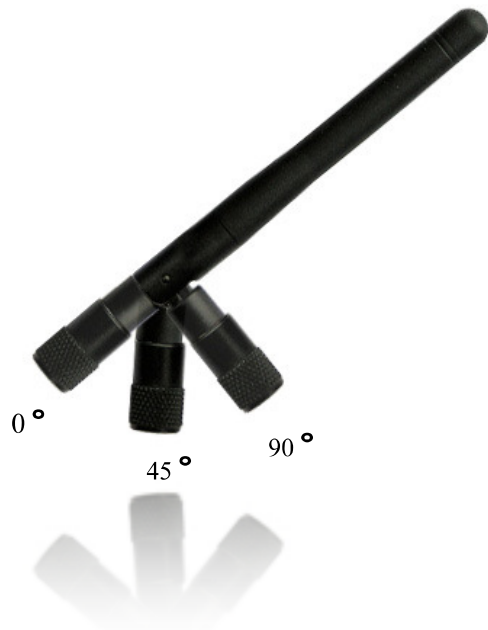

GSM/3G SWIVEL WHIP ANTENNA

- **Robust swivel antenna**
- **Penta Bands available**
- **Gain <3 dBi**

ADA-0186QU is a robust Dipole swivel antenna with three distinct "snap in" positions 0-45-90°.

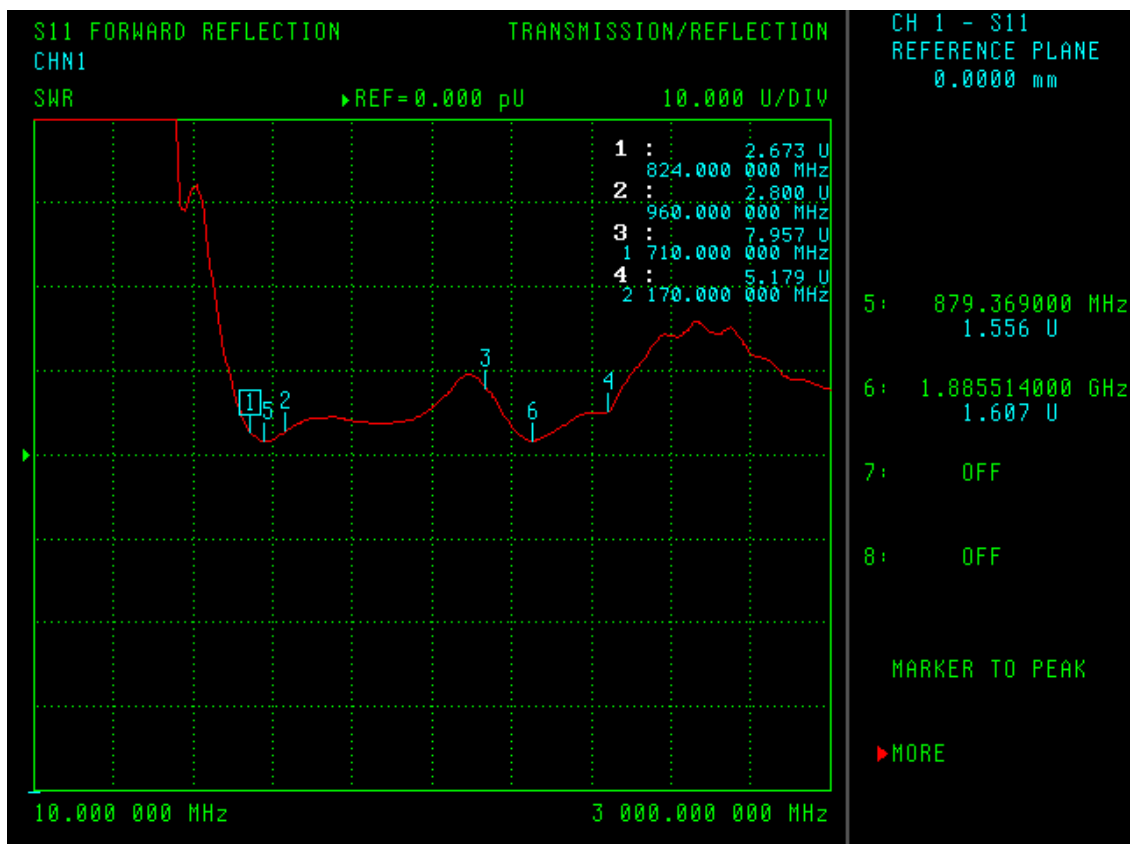
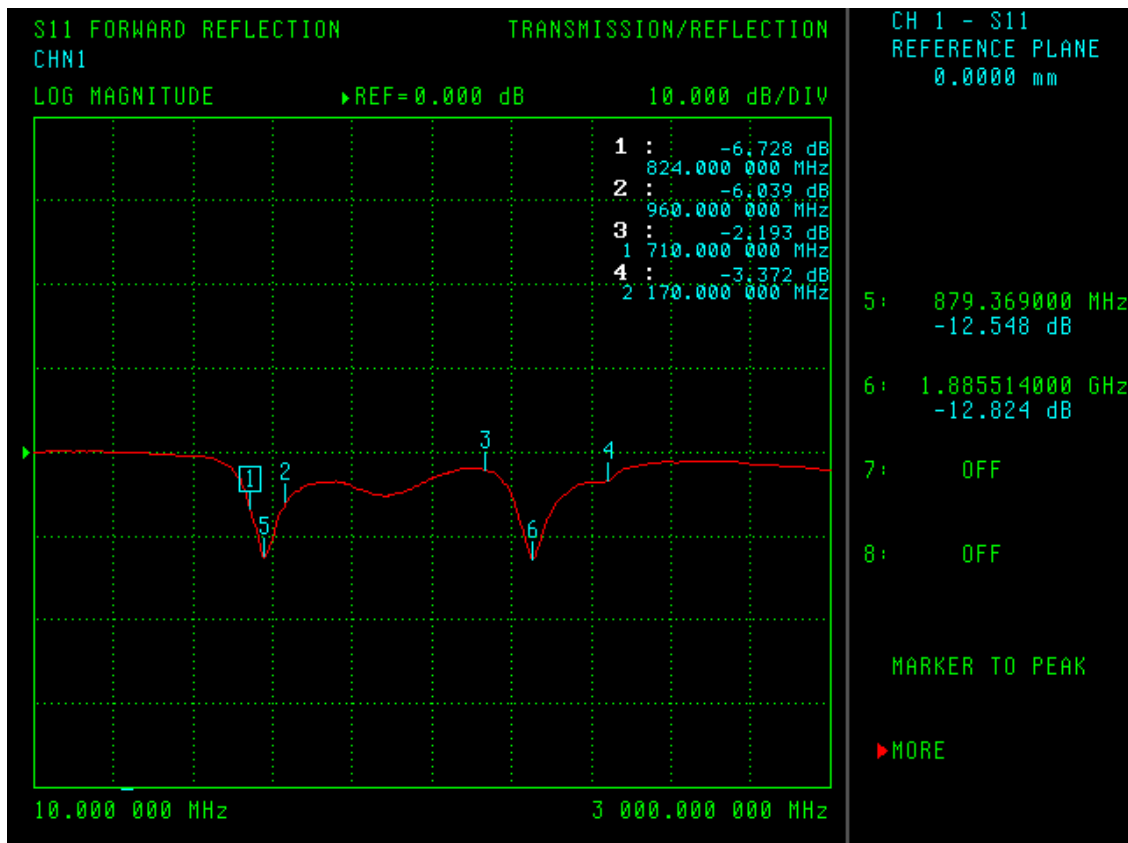
ADA-0186QU is a Penta Band Antenna covering the 800/900/1800/1900 MHz and 2170 MHz Bands.

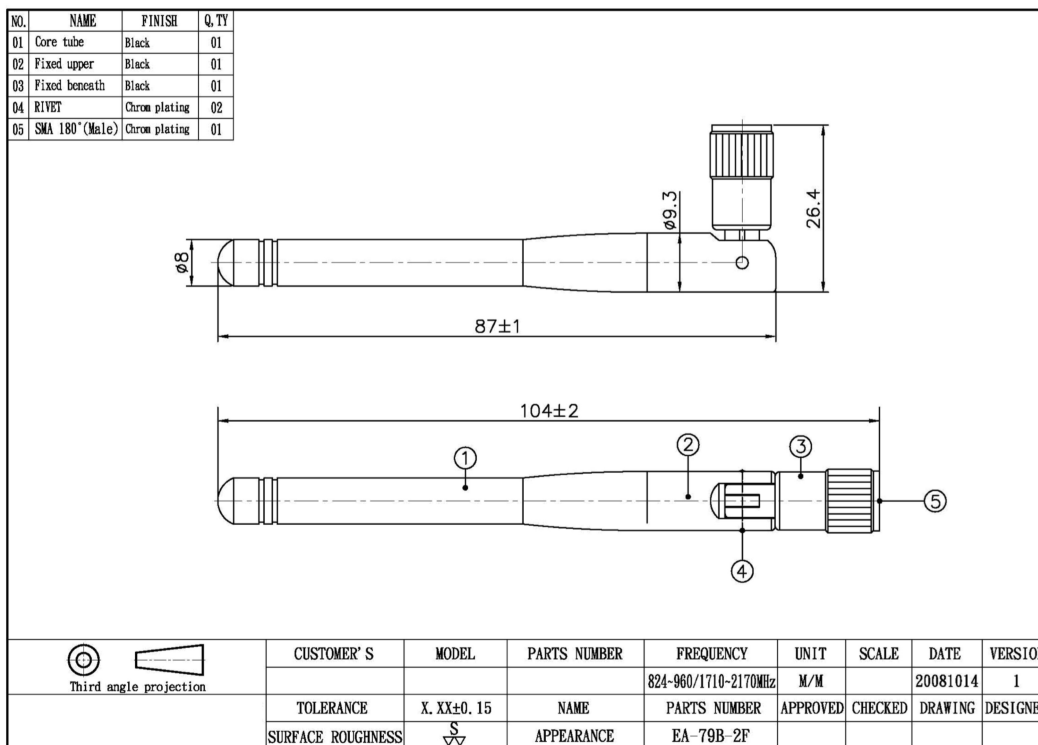


RoHS

Specification ADA-0186QU

Category	Overall performance
Frequency	800/900/1800/1900 & 2170 MHz
Impedance	50 Ω
Gain Average	<3 dBi
Polarization	Vertical
Electrical wave	1/2 Wave Dipole
V.S.W.R	< 8 : 1
Connector Type	SMA (Male)
Antenna Dimension	104mm \pm 2mm
Antenna Cover	ABS+TPEEL630, Black
Operating Temp	-30° \sim +70°
Storage Temp	-40° \sim +80°





Ordering codes

Type	Description	Frequency (MHz)
ADA-0186QU	Swivel Antenna SMA	800/900/1800/1900/2170

For the latest updates, visit our Web site: www.adactus.se

Disclaimer

Information furnished is believed to be accurate and reliable. However, Adactus assumes no responsibility for the consequences of use of such information nor for any infringement of patents or other rights of third parties which may result from its use. Adactus reserves the right to make changes without further notice to any product herein to improve reliability, function or design. Adactus does not assume any liability arising out of the application or use of any product described herein.

This publication supersedes and replaces all information previously supplied. Adactus products are not authorized as critical components in life support devices or systems.