
INTRODUCTION

1. GENERAL DESCRIPTION

| Model No |
|------------------------|
| ADA-901-928MHz-EA-272E |

Below is a table summarising the antenna design specification.

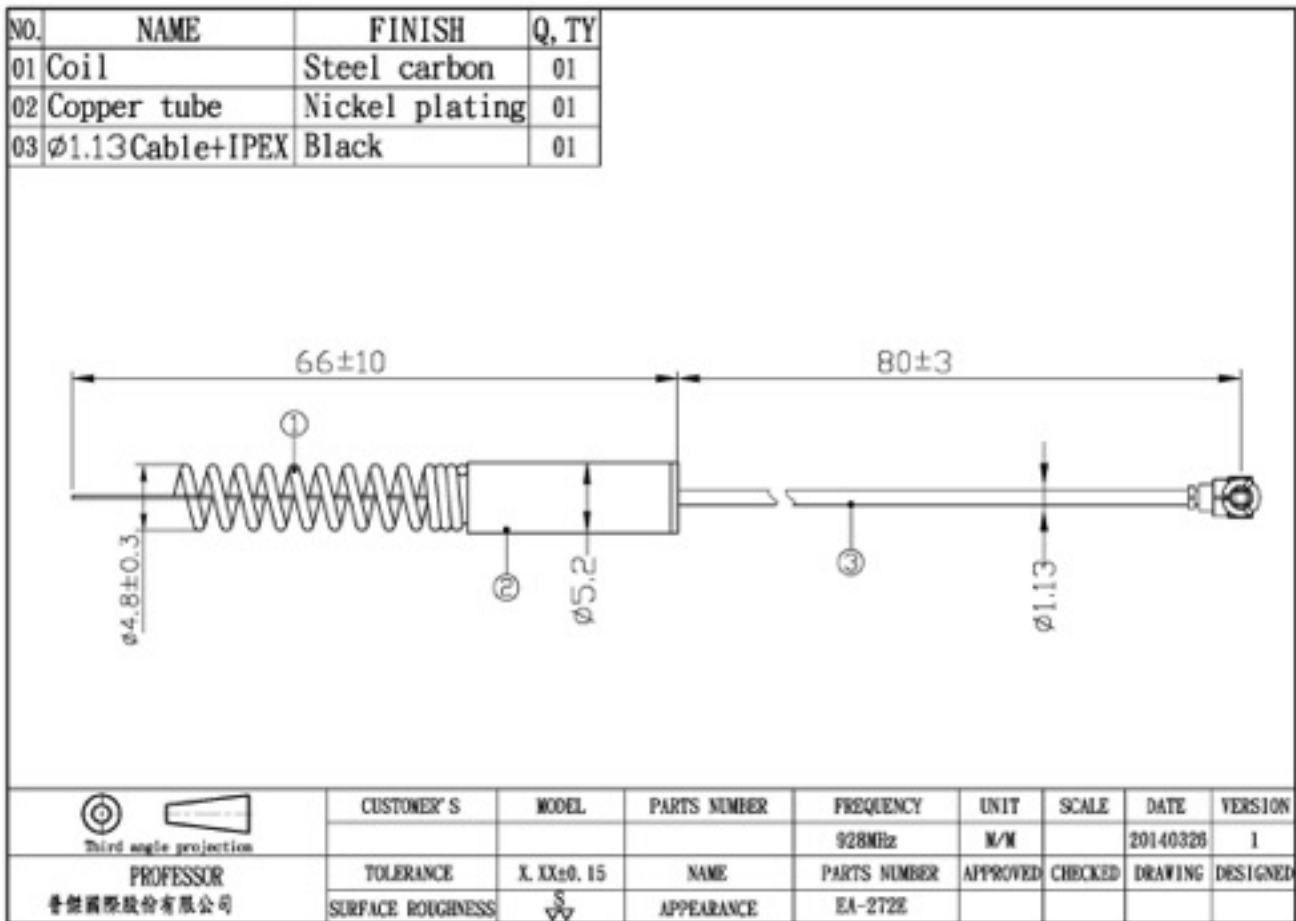
1.1 Electrical Properties

| Parameter | Description |
|-------------------|-------------------|
| Frequency Band | 928MHz |
| Nominal Impedance | 50 ohm |
| Polarization | Vertical |
| Return Loss | Please See Data-1 |
| V.S.W.R | 2.0: 1 |

1.2 Mechanical Properties

| Parameter | Description |
|-----------------------------|---------------------------------|
| Antenna Type | External Antenna |
| Touch Type | Screw Type |
| Connector Type | Ø1.13Cable/80±3+I-PEX Connector |
| Antenna Color | Black |
| Operating Temperature Range | -20°C~+60°C |
| Storage Temperature Range | -30°C~+70°C |

2. Appearance



3. Frequency

