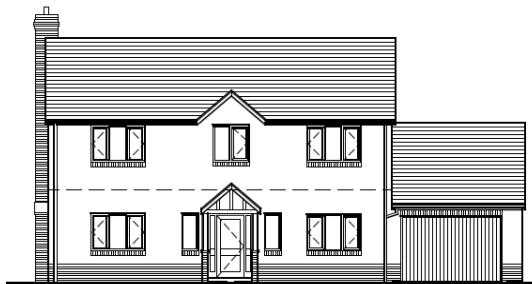


**New housing projects**



## New house in Cardiff

## The Site

After development



**Cardiff City Council Planning Dept.** included this scheme in their planning guidance advice as an example of good design. They said...  
*"the infill development successfully employs elements of contemporary design whilst also responding to character and context in terms of:*

**Scale and massing** *Appropriate to neighbouring dwellings.*

**Building line** *Maintains the existing building line in the street.*

**Materials** *The predominant facing materials reflect the materials in the neighbouring dwellings, whilst the additional materials chosen for finer detailing complement the building and the street scene.*

**Architectural detailing** *The design reinvents the various shapes and features in the adjacent buildings in a contemporary way, such as window design."*

## New houses in the conservation area of a historical town

### The Site



Refurbishment of a historical building into 2 apartments together with a development of 3 terraced cottages in the centre of Llantwit Major, a historical town in the Vale of Glamorgan



Elevation off Wesley Street

### Proposals

OUTLINE OF THE POLICE  
STATION OFF WESLEY  
STREET

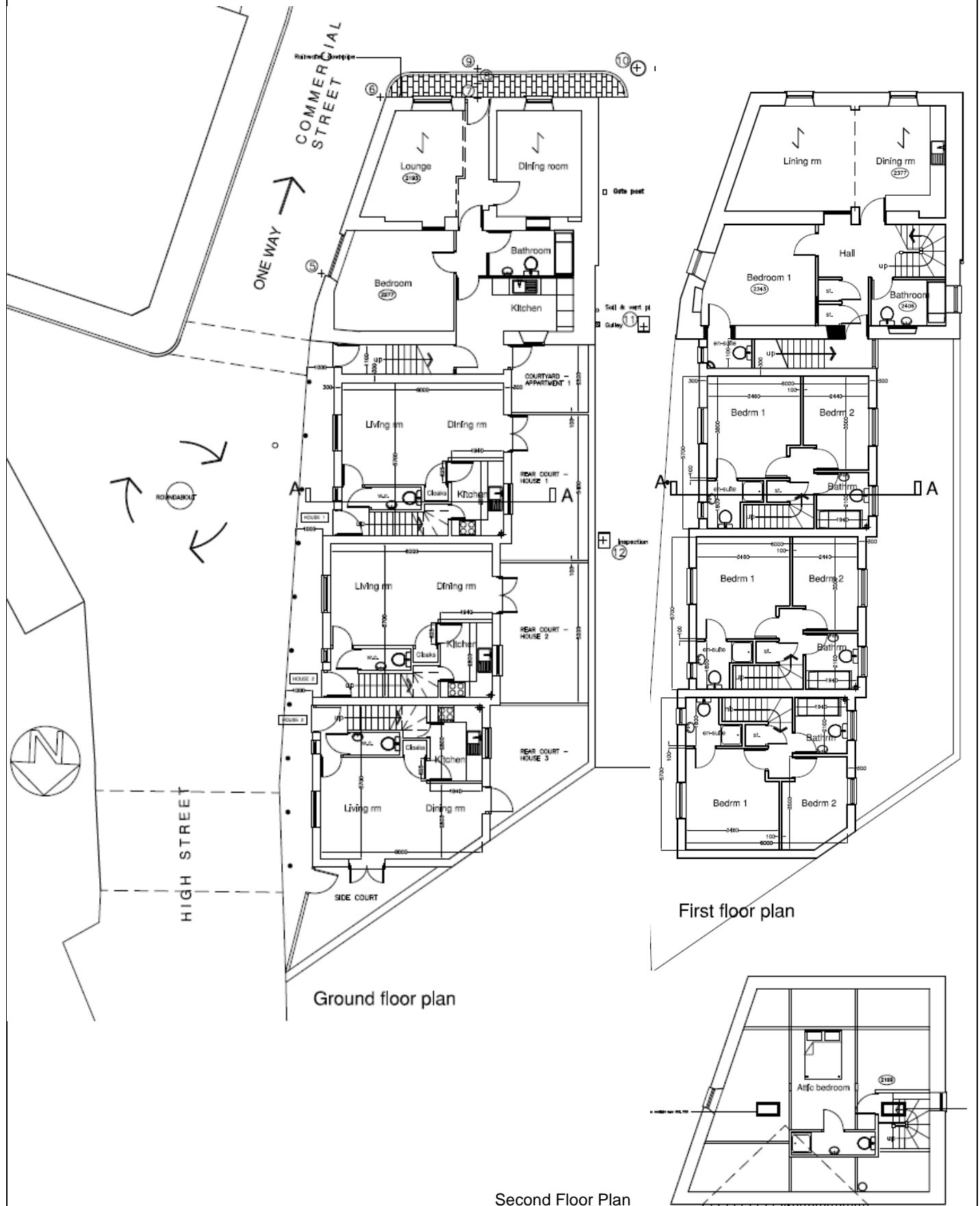


Elevation off Commercial Street / High Street

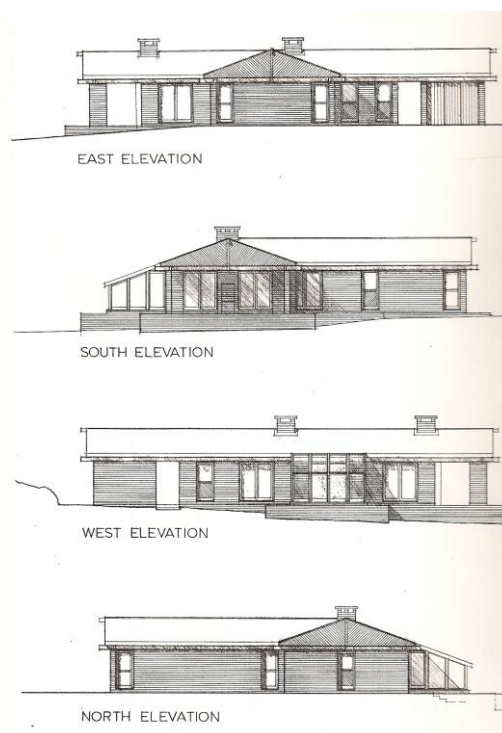
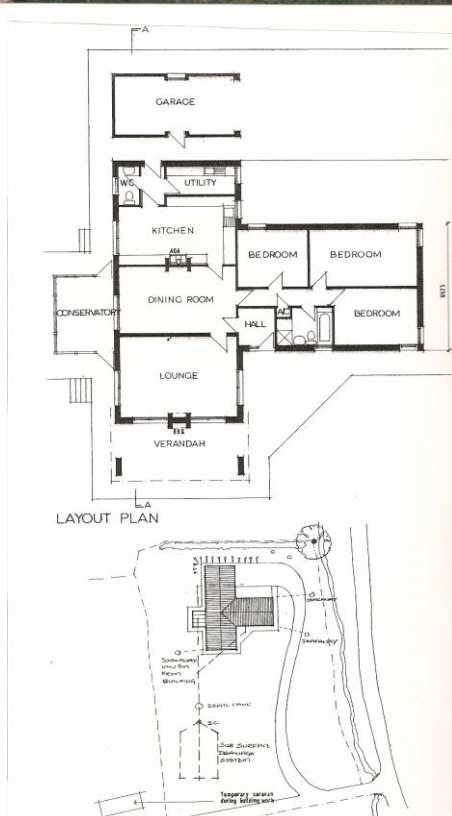


Rear Elevation

New houses in the conservation area of a historical town continued The Plans



**New bungalow in the open countryside**



**New house in a rural village**  
The Site



The house follows the steeply sloping site and has 6 different levels. There is access to different external spaces each level.



**The clients said** *'this opportunity came up at just the right time and meant we could create something that was exactly what we wanted and in a perfect location'.*

**The estate agent said** *'Completed in 2010, this beautiful contemporary home nestles within the hamlet of Graig Penllyn in the highly sought after Vale of Glamorgan. Offering flexible accommodation set over four floors, the interior boasts four bedrooms, a stunning drawing room with a veranda and a fabulous kitchen/dining room. Outside you will find a private courtyard garden and a double garage.'*



## New houses in Harrow, London

### Project 1

A detached house in a conservation area



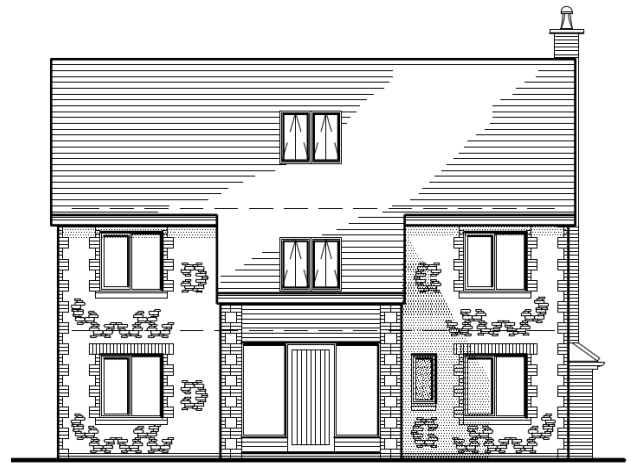
### Project 2

A pair of detached houses

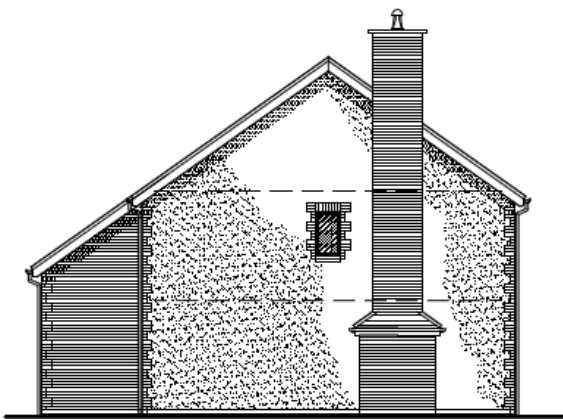


## New House in a farm setting

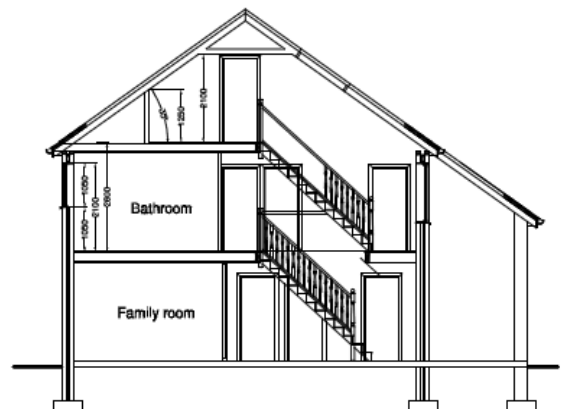
A self build project development adjacent to rural farm buildings which includes elements of contemporary design with traditional materials.



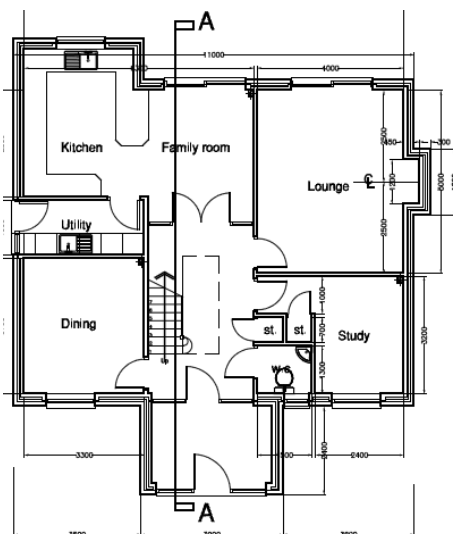
Front elevation



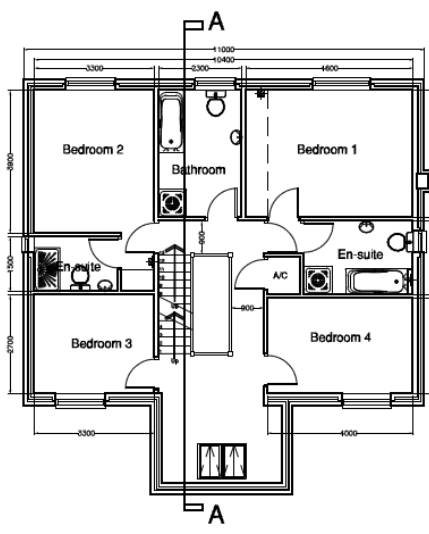
Side elevation



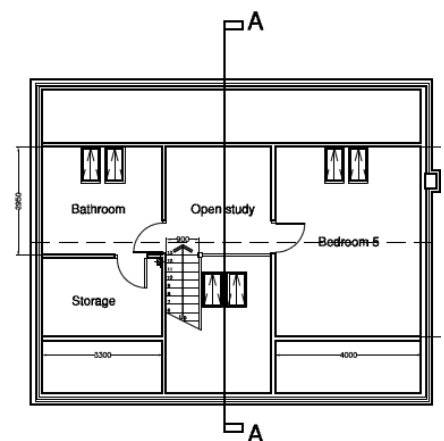
Section A-A



Ground floor plan



First floor plan



Attic floor plan

## House in rural setting

A design on a steeply sloping site.

The house is for use by disabled with single story living. The lounge has elevated views over farmland and the house makes use of solar gain from south facing windows.

A covered loggia area is providing which reduces the solar gain in the summer whilst maximising winter gains.



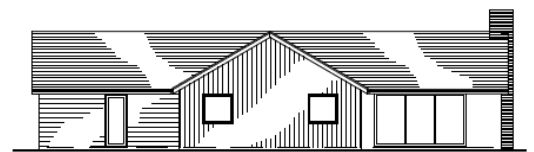
North west elevation



South west elevation

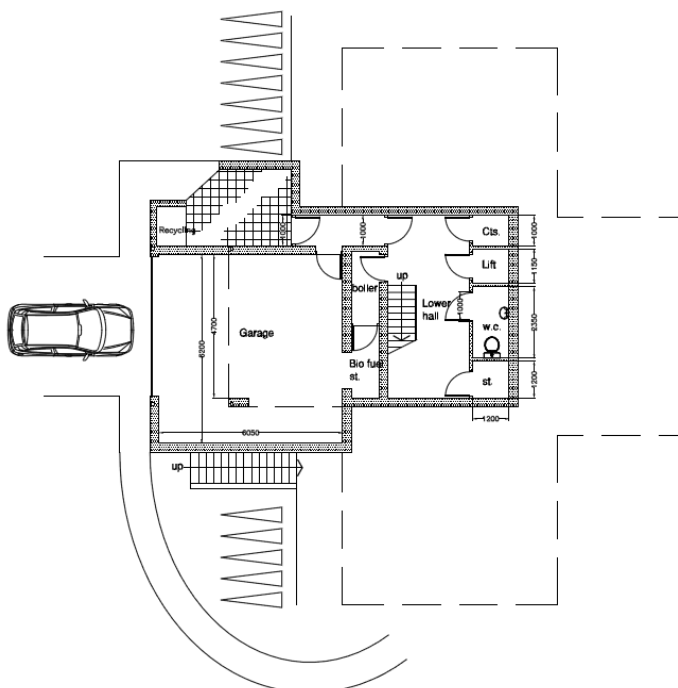


South east elevation

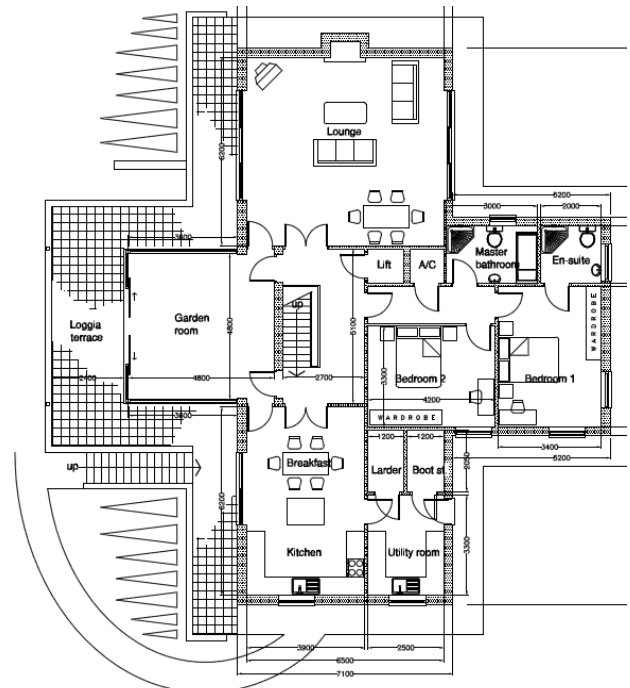


North east elevation

## Elevations



Lower ground floor



Ground floor

## Plans

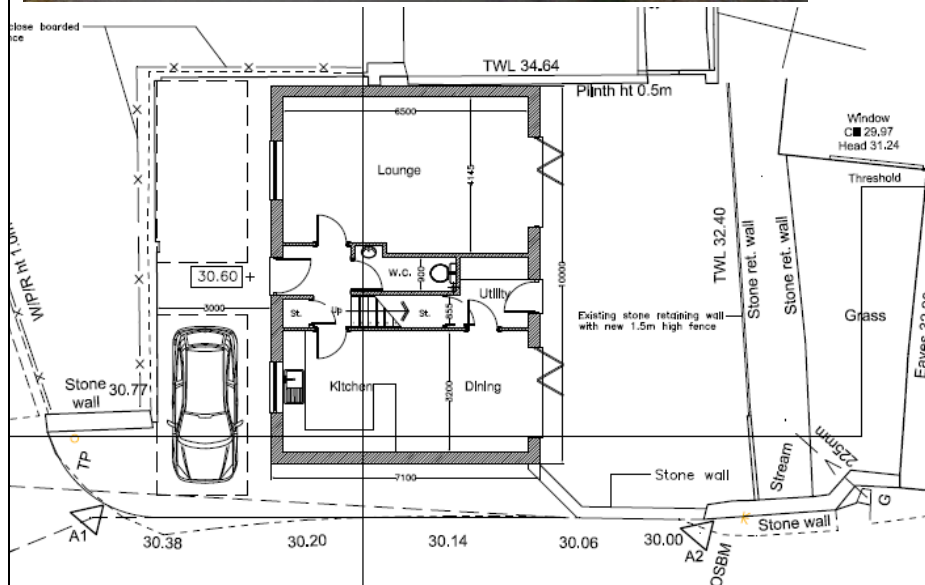
## House in rural setting



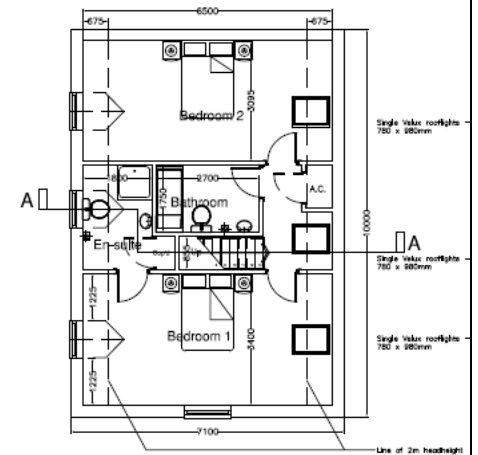
### Existing site

New cottage on the site of a commercial garage.

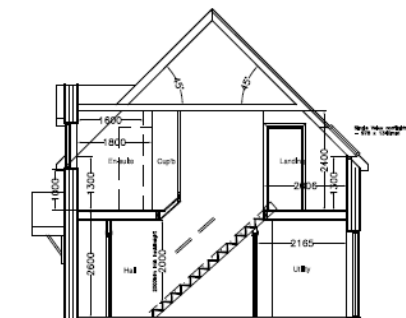
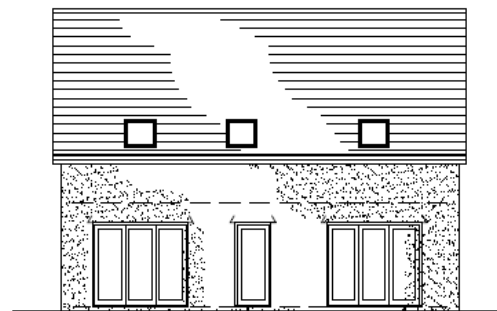
The simple form reflects the local vernacular and the immediate adjacent properties with its gable end facing the road.



Ground Floor Plan



First Floor Plan



Elevations and Sections