

Communications Baseband Transceiver Preliminary Data Sheet

MSCBT

Description

The MSCBT IC is a CMOS chip that has the analog signal processing functions required by cellular phones and radio and other full duplex and half duplex devices.

The MSCBT integrated circuit allows bi-directional transmit and receive gain volume and filtering for the voice band. In addition, the MSCBT provides the filter needed for Continuous Tone Control Squelch System (CTCSS) and Continuous Digital Control Squelch System (CDCSS) generation and detection. A comparator in the MSCBT allows for the recovered squelch or DTMF tones to be applied to a microcontroller for decoding.

An internal highpass filter attenuates the tones from the voice band, by 50 dB, preventing voice from effecting tone transmission. A limiter increases the voice signals to be transmitted to 2Vpp for more effective modulation. The transmit output is filtered to a selectable 2.55 or 3kHz bandwidth before gain adjusts. A differential output is provided for interface with a variety of FM transmitter choices.

The MSCBT will operate from 3.3 V to 5.5 VDC. The MSCBT is available in a 32 pin 7x7mm LQFP.

Features

- Function down to 3.3 VDC
- Low Power Consumption
- 50 CTCSS Squelch Tones filtered
- CDCSS Code filter
- Programmable filter for pre-detection filtering
- Comparator for direct uP interface of detected signals

Applications

- Family Radio Service (FRS) 2-way Radio
- Land Mobile Radio (LMR) 2 way Radios
- General Mobile Radio Service (GMRS) 2 way Radios
- Low Power Radio Service (LPRS) 2 way Cellular
- Non-standard Voice-band communications
- Wired and Wireless Intercom
- Half-Duplex Speakerphone Analog Signal Processing
- Full-Duplex Speakerphone Analog Signal Processing

Absolute Maximum Ratings

Power Supply Voltage	+6v
Storage Temperature	-60 to +150°C
Operating Temperature	-20 to +85°C

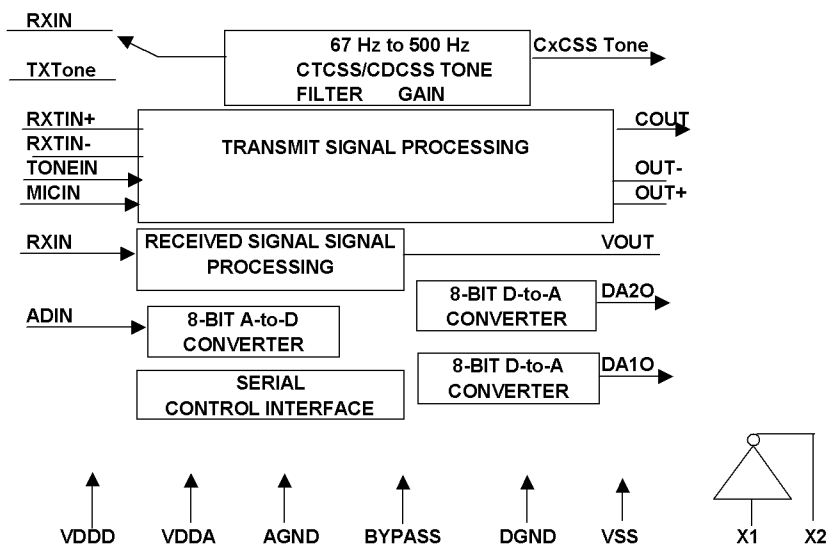


Figure 1: MSCBT Block Diagram

Communications Baseband Transceiver Preliminary Data Sheet

Electrical Characteristics

(VDD = +3.3V, T = 25° C)

MSCBT

PARAMETER	SYMBOL	CONDITIONS	MIN	TYP	MAX	UNITS
DC Specifications						
Operating Voltage	VDD		3.3	5.0	5.5	V
Supply Current	IDD				4.0	mA
Power Down Current	IDD _{PD}			300	500	uA
Analog Ref. Voltage	VREF			0.5*VDD		V
Input Voltage Low	VIL			0.3*VDD		V
Input Voltage High	VIH			0.7*VDD		V
Output Voltage Low	VOL			0.3		V
Output Voltage High	VOH			0.8*VDD		V
Input Current				10		uA
Output Current High	IOH			200		uA
Output Current Low	IOL			2		mA
AC Specifications						
Serial Data Clock Rate				0.2		MHz
CTCSS Passband Gain		250 Hz	-1		1	dB
CTCSS Stopband Gain		500 Hz			-35	dB
Speech Filter Passband Gain			-1		1	dB
Speech Filter Stopband Gain						
Master Clock Frequency				3.57955		MHz

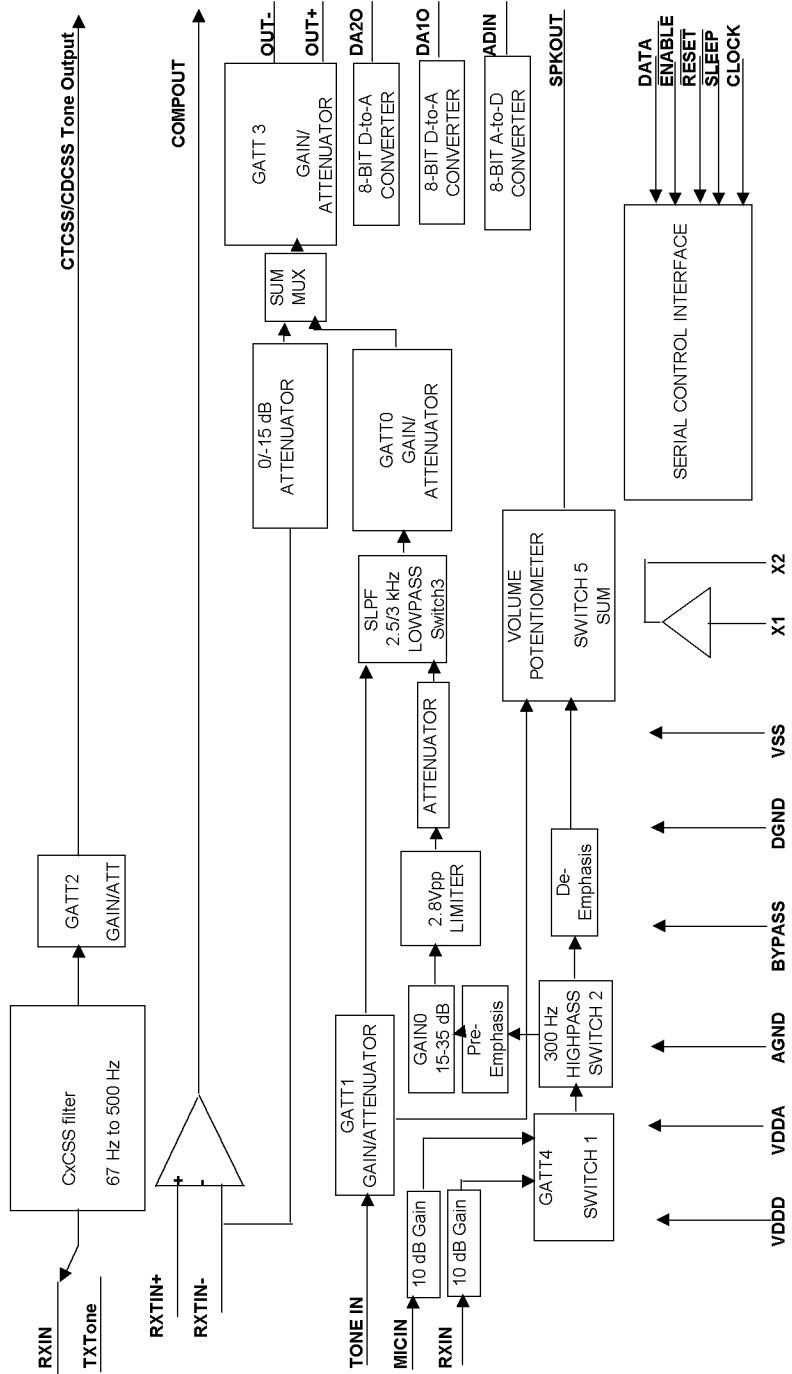
Application Information

The MSCBT is controlled by a serial data word which contains both the address and data in a single 16 bit string. Figure 3 shows the timing of the Serial data clock, sync pulse and data I/O. For Analog to Digital conversion, the data port changes from input to output when the ADC is read and with the transition of high to low of ENBL. Figure 4 gives the details. Note that the I/O connected to DATA must switch from output to input after the first cycle after ENBL going low.

Note that to simplify the text the CTCSS and CDCSS filters are referred to as CxCSS filters.

Communications Baseband Transceiver Preliminary Data Sheet

Block Diagram



MSCBT

Figure 2: MSCBT Detailed Block Diagram

Communications Baseband Transceiver Preliminary Data Sheet

MSCBT

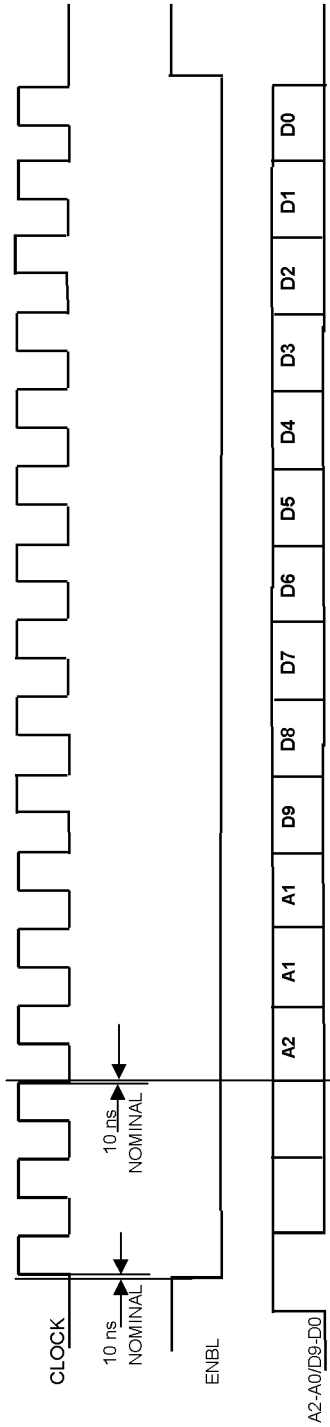


Figure 3: MSCBT Read Timing Diagram

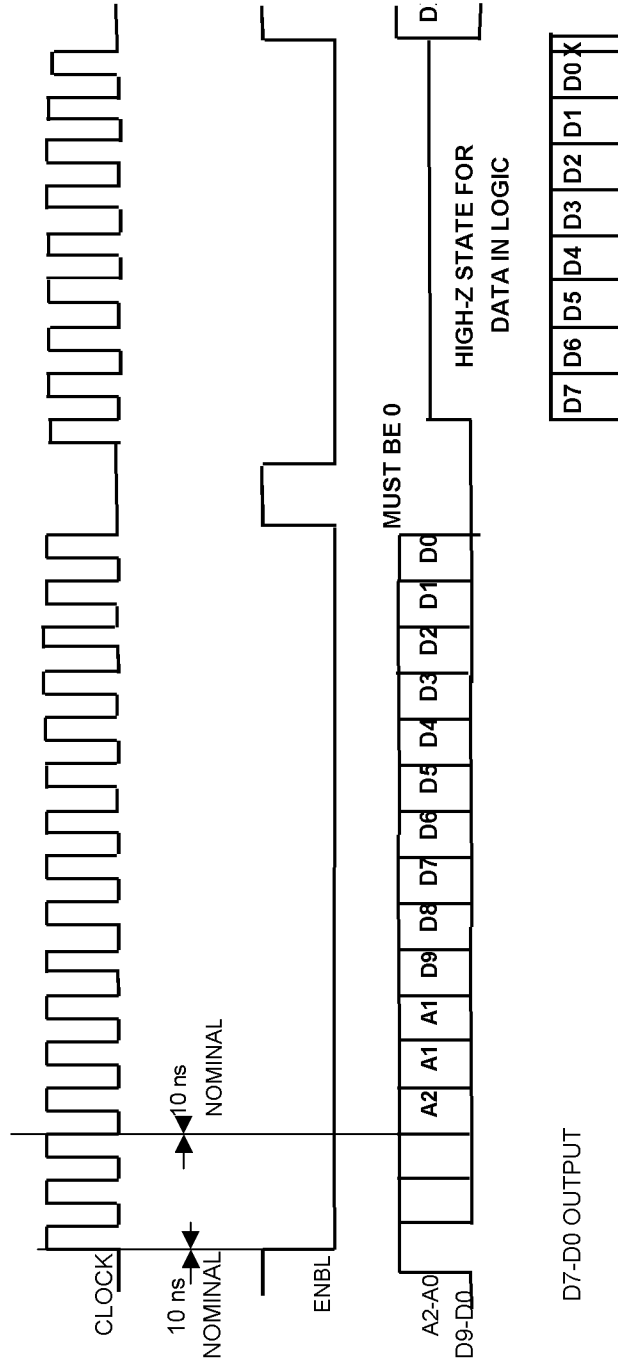


Figure 4: MSCBT Write Timing Diagram



05/2004

Communications Baseband Transceiver Preliminary Data Sheet

MSCBT

Serial Interface Registers _____

ADDRESS						DATA									
R/W	A4	A3	A2	A1	A0	D9	D8	D7	D6	D5	D4	D3	D2	D1	D0
1	X	X	0	0	0	GATT4				SW2		SW1	SW5	X	X
1	X	X	0	0	1	GAIN0			LIMITER		POTVOL				X
1	X	X	0	1	0	GATT0				SW3	SLPF	GATT1			
1	X	X	0	1	1	SW4	GATT2				CXCSSFILTER				
1	X	X	1	0	0	X	X	X	X	X	ATTN	TXSUM		X	X
1	X	X	1	0	1	GATT3				X	X	X	X	X	
1	X	X	1	1	0	ADAC	DAC								X
1	X	X	1	1	1	0	0	ANALOG TO DIGITAL CONVERTER WRITE (DON'T CARE)							

A/D CONVERTER OUTPUT	R/W	D7	D6	D5	D4	D3	D2	D1	D0
	0	DATA	DATA	DATA	DATA	DATA	DATA	DATA	DATA

Register 0 _____

ADDRESS						DATA													
R/W	A4	A3	A2	A1	A0	D9	D8	D7	D6	GATT4	D5	D4	SWITCH 2	D3	SWITCH 1	D2	SWITCH 5	D1	D0
1	X	X	0	0	0	0	0	0	0	-4.0	0	0	RX with DE	0	OFF	0	OFF	X	X
1	X	X	0	0	0	0	0	0	1	-3.5	0	1	RX FLAT	1	ON	1	ON	X	X
1	X	X	0	0	0	0	0	1	0	-3.0	1	0	TX with PE						
1	X	X	0	0	0	0	0	1	1	-2.5	1	1	TX FLAT						
1	X	X	0	0	0	0	1	0	0	-2.0									
1	X	X	0	0	0	0	1	0	1	-1.5									
1	X	X	0	0	0	0	1	1	0	-1.0									
1	X	X	0	0	0	0	1	1	1	-0.5									
1	X	X	0	0	0	1	0	0	0	-0.0									
1	X	X	0	0	0	1	0	0	1	+0.5									
1	X	X	0	0	0	1	0	1	0	+1.0									
1	X	X	0	0	0	1	0	1	1	+1.5									
1	X	X	0	0	0	1	1	0	0	+2.0									
1	X	X	0	0	0	1	1	0	1	+2.5									
1	X	X	0	0	0	1	1	1	0	+3.0									
1	X	X	0	0	0	1	1	1	1	+3.5									

Communications Baseband Transceiver

Preliminary Data Sheet

MSCBI

Register 1 _____

ADDRESS										DATA									
R/W	A4	A3	A2	A1	A0	D9	D8	D7	D6	D5	LIMM	D4	D3	D2	D1	POTENTIOMETER VOLUME	D0		
1	X	X	0	0	1	0	0	0	+0.0 dB	0	0	-2.4 dB	0	0	0	MUTE	X		
1	X	X	0	0	1	0	0	1	+15.0	0	1	-4.2	0	0	0	-2.5 dB	X		
1	X	X	0	0	1	0	1	0	+18.3	1	0	-6.0	0	0	1	-5	x		
1	X	X	0	0	1	0	1	1	+21.7	1	1	-7.8	0	0	1	-7.5	x		
1	X	X	0	0	1	1	0	0	+25.0				0	1	0	-10.0	x		
1	X	X	0	0	1	1	0	1	+28.3				0	1	0	-12.5	x		
1	X	X	0	0	1	1	1	0	+31.7				0	1	1	-15.0	x		
1	X	X	0	0	1	1	1	1	+35.0				0	1	1	-17.5	x		
1	X	X	0	0	1	1	0	0					1	0	0	-20.0	x		
1	X	X	0	0	1	1	0	0					1	0	0	-22.5	x		
1	X	X	0	0	1	1	0	1					1	0	1	-25.0	x		
1	X	X	0	0	1	1	0	1					1	0	1	-27.5	x		
1	X	X	0	0	1	1	1	0					1	1	0	-30.0	X		
1	X	X	0	0	1	1	1	0					1	1	0	-32.5	X		
1	X	X	0	0	1	1	1	1					1	1	1	-35.0	X		
1	X	X	0	0	1	1	1	1					1	1	1	-37.5	X		

Register 2 _____

ADDRESS										DATA									
R/W	A4	A3	A2	A1	A0	D9	D8	D7	D6	GATT0	D5	SWITCH 3	D4	SLPF	D2	D1	D1	D0	GATT1
1	X	X	0	1	0	0	0	0	0	-4.0	0	LIMITER	0	3kHz	0	0	0	0	0.0 dB
1	X	X	0	1	0	0	0	0	1	-3.5	1	GATT1	1	2.55 kHz	0	0	0	1	0.5
1	X	X	0	1	0	0	0	1	0	-3.0					0	0	1	0	1.0
1	X	X	0	1	0	0	0	1	1	-2.5					0	0	1	1	1.5
1	X	X	0	1	0	0	1	0	0	-2.0					0	1	0	0	2.0
1	X	X	0	1	0	0	1	0	1	-1.5					0	1	0	1	2.5
1	X	X	0	1	0	0	1	1	0	-1.0					0	1	1	0	3.0
1	X	X	0	1	0	0	1	1	1	-0.5					0	1	1	1	3.5
1	X	X	0	1	0	1	0	0	0	-0.0					1	0	0	0	4.0
1	X	X	0	1	0	1	0	0	1	+0.5					1	0	0	1	4.5
1	X	X	0	1	0	1	0	1	1	+1.0					1	0	1	0	5.0
1	X	X	0	1	0	1	1	0	0	+1.5					1	0	1	1	5.5
1	X	X	0	1	0	1	1	0	0	+2.0					1	1	0	0	6.0
1	X	X	0	1	0	1	1	0	1	+2.5					1	1	0	1	6.5
1	X	X	0	1	0	1	1	1	0	+3.0					1	1	1	0	7.0
1	X	X	0	1	0	1	1	1	1	+3.5					1	1	1	1	7.5



05/2004

Communications Baseband Transceiver Preliminary Data Sheet

MSCBT

Register 3 _____

ADDRESS										DATA								
R/W	A4	A3	A2	A1	A0	D9	SW4	D8	D7	D6	D5	GATT2	D4	D3	D2	D1	D0	CxCSS FILTER
1	X	X	0	1	1	0	RDIN	0	0	0	0	-3.0 dB	0	0	0	0	0	50 Hz
1	X	X	0	1	1	1	TDIN	0	0	0	1	-2.5	0	0	0	0	1	59.2
1	X	X	0	1	1			0	0	1	0	-2.0	0	0	0	1	0	69.6
1	X	X	0	1	1			0	0	1	1	-1.5	0	0	0	1	1	80
1	X	X	0	1	1			0	1	0	0	-1.0	0	1	0	0	0	88.9
1	X	X	0	1	1			0	1	0	1	-0.5	0	1	0	0	1	100
1	X	X	0	1	1			0	1	1	0	+0.0	0	1	0	1	0	110.3
1	X	X	0	1	1			0	1	1	1	+0.5	0	1	0	1	1	118.5
1	X	X	0	1	1			1	0	0	0	+1.0	0	1	1	0	0	128
1	X	X	0	1	1			1	0	0	1	+1.5	0	1	0	0	1	139.1
1	X	X	0	1	1			1	0	1	0	+2.0	0	1	0	1	0	150
1	X	X	0	1	1			1	0	1	1	+2.5	0	1	0	1	1	160
1	X	X	0	1	1			1	1	0	1	+12.0	0	1	1	0	0	168.4
1	X	X	0	1	1			1	1	1	0	+12.5	0	1	1	0	1	177.8
1	X	X	0	1	1			1	1	1	0	+13.0	0	1	1	1	0	188.2
1	X	X	0	1	1			1	1	1	1	+13.5	0	1	1	1	1	200
1	X	X	0	1	1								1	0	0	0	0	206.4
1	X	X	0	1	1								1	0	0	0	1	220.7
1	X	X	0	1	1								1	0	0	1	0	228.6
1	X	X	0	1	1								1	0	0	1	1	237
1	X	X	0	1	1								1	0	1	0	0	246.1
1	X	X	0	1	1								1	0	1	0	1	256
1	X	X	0	1	1								1	0	1	1	0	266
1	X	X	0	1	1								1	0	1	1	1	278.3
1	X	X	0	1	1								1	1	0	0	0	290.9
1	X	X	0	1	1								1	1	0	0	1	300
1	X	X	0	1	1								1	1	0	1	0	UNDEFINED
1	X	X	0	1	1								1	1	0	1	1	UNDEFINED
1	X	X	0	1	1								1	1	1	0	0	UNDEFINED
1	X	X	0	1	1								1	1	1	0	1	UNDEFINED
1	X	X	0	1	1								1	1	1	1	0	UNDEFINED
1	X	X	0	1	1								1	1	1	1	1	UNDEFINED



Communications Baseband Transceiver Preliminary Data Sheet

MSCBT

Register 4 _____

ADDRESS										DATA							
R/W	A4	A3	A2	A1	A0	D9	D8	D7	D6	D5	D4	ATTN	D3	D2	TXSUM	D1	D0
1	X	X	1	0	0	X	X	X	X	X	0	0	0	0	MUTE	X	X
1	X	X	1	0	0	X	X	X	X	X	1	-6	0	1	TX AUDIO 0dB	X	X
1	X	X	1	0	0	X	X	X	X	X			1	0	SUBAUDIO 0dB	X	X
1	X	X	1	0	0	X	X	X	X	X			1	1	TX AUDIO 0dB	X	X
															SUM SUB AUDIO	-15.6	dB

Register 5 _____

ADDRESS										DATA							
R/W	A4	A3	A2	A1	A0	D9	D8	D7	D6	D5	GATT3	D4	D3	D2	D1	D0	
1	X	X	1	0	1	0	0	0	0	0	-4.00 dB	X	X	X	X	X	
1	X	X	1	0	1	0	0	0	0	1	-3.75	X	X	X	X	X	
1	X	X	1	0	1	0	0	0	1	0	-3.50	X	X	X	X	X	
1	X	X	1	0	1	0	0	0	1	1	-3.25	X	X	X	X	X	
1	X	X	1	0	1	0	0	1	0	0	-3.00	X	X	X	X	X	
1	X	X	1	0	1	0	0	1	0	1	-2.75	X	X	X	X	X	
1	X	X	1	0	1	0	0	1	1	0	-2.50	X	X	X	X	X	
1	X	X	1	0	1	0	0	1	1	1	-2.25	X	X	X	X	X	
1	X	X	1	0	1	0	1	0	0	0	-2.00	X	X	X	X	X	
1	X	X	1	0	1	0	1	0	0	1	-1.75	X	X	X	X	X	
1	X	X	1	0	1	0	1	0	1	0	-1.50	X	X	X	X	X	
1	X	X	1	0	1	0	1	0	1	1	-1.25	X	X	X	X	X	
1	X	X	1	0	1	0	1	1	0	0	-1.00	X	X	X	X	X	
1	X	X	1	0	1	0	1	1	0	1	-0.75	X	X	X	X	X	
1	X	X	1	0	1	0	1	1	1	0	-0.50	X	X	X	X	X	
1	X	X	1	0	1	0	1	1	1	1	-0.25	X	X	X	X	X	
1	X	X	1	0	1	1	0	0	0	0	-0.00	X	X	X	X	X	
1	X	X	1	0	1	1	0	0	0	1	+0.25	X	X	X	X	X	
1	X	X	1	0	1	1	0	0	1	0	+0.50	X	X	X	X	X	
1	X	X	1	0	1	1	0	0	1	1	+0.75	X	X	X	X	X	
1	X	X	1	0	1	1	0	1	0	0	+1.00	X	X	X	X	X	
1	X	X	1	0	1	1	0	1	0	1	+1.25	X	X	X	X	X	
1	X	X	1	0	1	1	0	1	1	0	+1.50	X	X	X	X	X	
1	X	X	1	0	1	1	0	1	1	1	+1.75	X	X	X	X	X	
1	X	X	1	0	1	1	1	0	0	0	+2.00	X	X	X	X	X	
1	X	X	1	0	1	1	1	0	0	1	+2.25	X	X	X	X	X	
1	X	X	1	0	1	1	1	0	1	0	+2.50	X	X	X	X	X	
1	X	X	1	0	1	1	1	0	1	1	+2.75	X	X	X	X	X	
1	X	X	1	0	1	1	1	1	0	0	+3.00	X	X	X	X	X	
1	X	X	1	0	1	1	1	1	0	1	+3.25	X	X	X	X	X	
1	X	X	1	0	1	1	1	1	1	0	+3.50	X	X	X	X	X	
1	X	X	1	0	1	1	1	1	1	1	+3.75	X	X	X	X	X	



05/2004

Communications Baseband Transceiver Preliminary Data Sheet

MSCBT

Register 6 _____

ADDRESS							DATA											
R/W	A4	A3	A2	A1	A0	D9	DAC	D8	D7	D6	D5	D4	D3	D2	D1	DAC2 OUTPUT	DAC1 OUTPUT	D0
1	X	X	1	1	0	0	DAC1	0	0	0	0	0	0	0	0	LAST SETTING	0.0 V	X
1	X	X	1	1	0	0	DAC1	0	0	0	0	0	1	0	0	LAST SETTING	0.052	X
1	X	X	1	1	0	0	DAC1	0	0	0	0	1	0	0	0	LAST SETTING	0.103	X
1	X	X	1	1	0	0	DAC1	0	0	0	1	0	0	0	0	LAST SETTING	0.2063	X
1	X	X	1	1	0	0	DAC1	0	0	1	0	0	0	0	0	LAST SETTING	0.413	X
1	X	X	1	1	0	0	DAC1	0	1	0	0	0	0	0	0	LAST SETTING	0.826	X
1	X	X	1	1	0	0	DAC1	1	0	0	0	0	0	0	0	LAST SETTING	1.60	X
1	X	X	1	1	0	0	DAC1	1	1	1	1	1	1	1	1	LAST SETTING	3.30	X
1	X	X	1	1	0	1	DAC2	0	0	0	0	0	0	0	0	0.0V	LAST SETTING	X
1	X	X	1	1	0	1	DAC2	0	0	0	0	0	1	0	0	0.052	LAST SETTING	X
1	X	X	1	1	0	1	DAC2	0	0	0	0	1	0	0	0	0.103	LAST SETTING	X
1	X	X	1	1	0	1	DAC2	0	0	0	1	0	0	0	0	0.2063	LAST SETTING	X
1	X	X	1	1	0	1	DAC2	0	0	1	0	0	0	0	0	0.413	LAST SETTING	X
1	X	X	1	1	0	1	DAC2	0	1	0	0	0	0	0	0	0.826	LAST SETTING	X
1	X	X	1	1	0	1	DAC2	1	0	0	0	0	0	0	0	1.65	LAST SETTING	X
1	X	X	1	1	0	1	DAC2	1	1	1	1	1	1	1	1	3.3	LAST SETTING	X

Register 7 _____

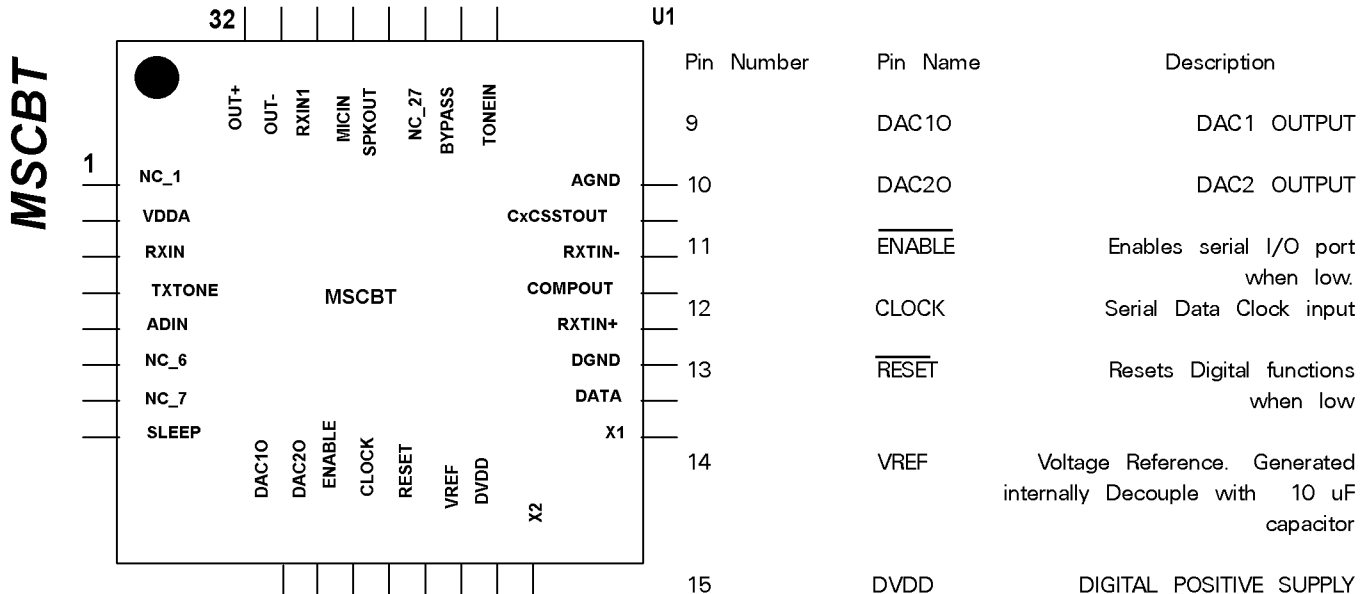
ADDRESS							DATA										
R/W	A4	A3	A2	A1	A0	D9	D8	D7	D6	D5	D4	D3	D2	D1	D1	D0	
1	X	X	1	1	1	0	0	X	X	X	X	X	X	X	X	X	

Read Analog to Digital Converter _____

OUTPUT/INPUT CONTROL		DATA							
R/W	D7	D6	D5	D4	D3	D2	D1	D1	D0
0	MSB	DATA	DATA	DATA	DATA	DATA	DATA	DATA	LSB

Communications Baseband Transceiver

Preliminary Data Sheet



Pin Descriptions

Pin Number	Pin Name	Description
1	NC_1	DO NOT CONNECT TO THIS PIN. For testing only
2	VDDA	Positive Analog Supply. Nominally 3.30 VDC. Decouple with 0.1 uF cap.
3	RXIN	Receive signal pin input. This is the input for CTCSS or CDCSS filtering.
4	TXSTONE	Transmit modulation signal input Squarewave CTCSS or CTCSS data filter input.
5	ADIN	Analog to Digital converter input
6	NC_6	DO NOT CONNECT TO THIS PIN. For testing only
7	NC_7	DO NOT CONNECT TO THIS PIN. For testing only
8	SLEEP	Power down when Low
9	DAC10	DAC1 OUTPUT
10	DAC20	DAC2 OUTPUT
11	ENABLE	Enables serial I/O port when low.
12	CLOCK	Serial Data Clock input
13	RESET	Resets Digital functions when low
14	VREF	Voltage Reference. Generated internally Decouple with 10 uF capacitor
15	DVDD	DIGITAL POSITIVE SUPPLY A 0.1 uF decoupling capacitor is needed. nominally 3.3VDC
16	X2	CRYSTAL OSCILLATOR OUTPUT 3.579545 MHz crystal is tied to this pin
17	X1	CRYSTAL OSCILLATOR INPUT 3.579545 MHz crystal is tied to this pin
18	DATA	SERIAL DATA I/O This input becomes an output when reading A/D converter
19	DGND	DIGITAL GROUND. Tie to 0VDC
20	RXTIN+	POSITIVE COMPARATOR INPUT
21	COMPOUT	COMPARATOR OUTPUT
22	RXTIN-	NEGATIVE COMPARATOR INPUT
23	CxCSSTOUT	TONE FILTER OUTPUT
24	AGND	ANALOG GROUND (0Vdc)
25	TONEIN	CxCSS or DTMF TONE TRANSMISSION INPUT
27	AGND	ANALOG GROUND (0Vdc)
28	BYPASS	TIE 10 uF CAPACITOR TO AGND

Communications Baseband Transceiver Preliminary Data Sheet

MSCBT

Pin Descriptions (Continued)

Pin Number	Pin Name	Description	Pin Number	Pin Name	Description
29	MICIN	Microphone Audio Input +10 dB fixed Gain on Input	31	OUT+	Positive Modulator Output For connection to FM Differential Input
30	RXIN1	Receive Audio Input +10 dB fixed Gain on Input	32	OUT-	Positive Modulator Output For connection to FM Differential Input

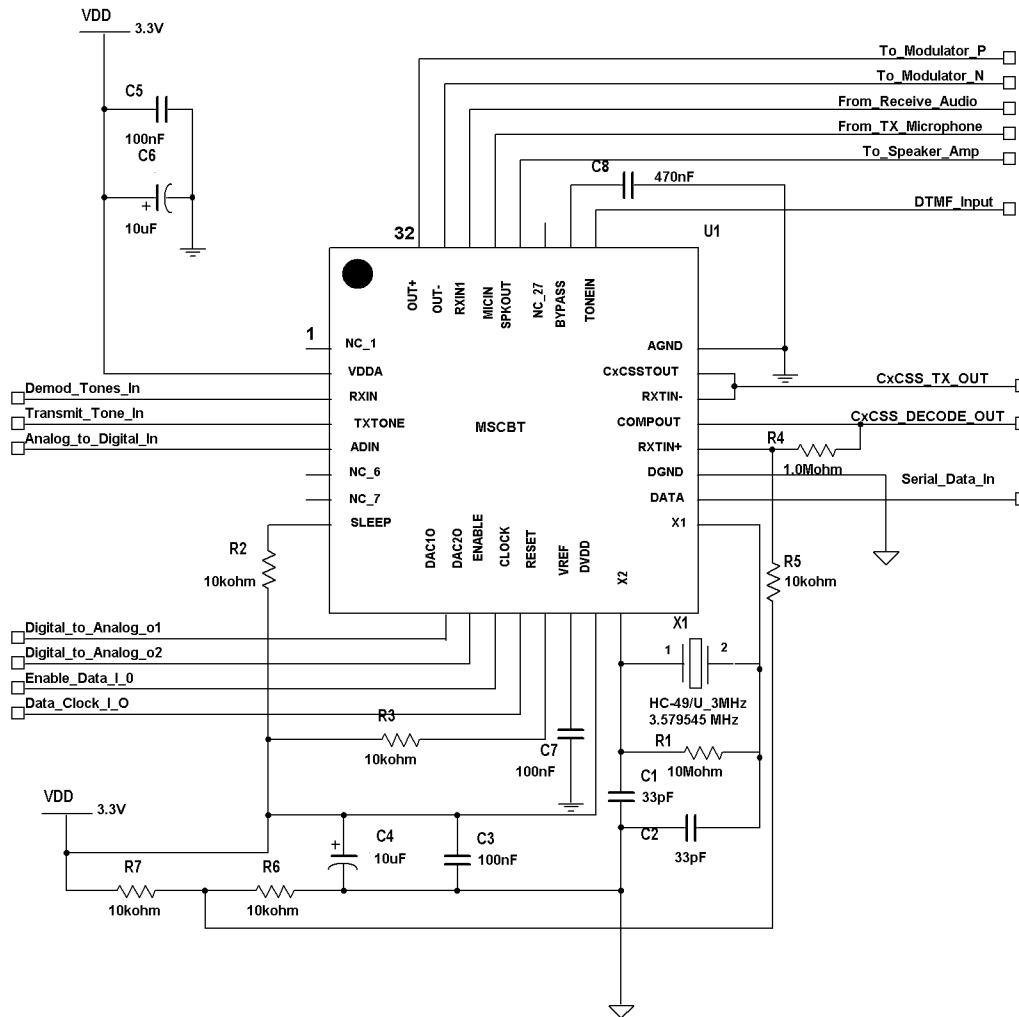


Figure 5: MSCBT Evaluation Circuit

Communications Baseband Transceiver Preliminary Data Sheet

MSCBT
STANDARD PRODUCTS

MSLFS	Selectable Low Voltage Lowpass/Bandpass Filter
MSEPAF	Electrically Programmable Active Filter
MSSPSI	Smart Programmable Sensor Interface
MSGEQ5A	Five Band Graphic Equalizer
MSGEQ7	Seven Band Graphic Equalizer
MSHFS1-6	Selectable High Frequency LP/BP Filter
MSFS1-6	Selectable Lowpass/Bandpass Filter
MSCAHF	Selectable High Frequency Active Lowpass/Bandpass Filter
MSU1F1-4, MSU2F1	Resistor Programmable Universal Active Filter
MSU1HF1-4, MSU2HF1	High Frequency Resistor Programmable Universal Active Filter
MSELP	Switched Capacitor Elliptic Lowpass Filter with Op Amps
MSNBLP	Switched Capacitor Butterworth Lowpass Filter
MSLE/B/C5L/M	Switched Capacitor General Purpose Lowpass Filter
MS2LFS	Dual Selectable Low Voltage Lowpass/Bandpass Filter
MSHN1-6	Selectable High Pass/Notch Filter
MSRAAF	Resistor Programmable Active Audio Filter
MSRAHF	Resistor Programmable Active High Frequency Filter
MSDET	Tone Detector

Mixed Signal Integration

2157F O'Toole Avenue

San Jose, California 95131-1332

Phone: (408)-434-6305

Fax: (408)-434-6417

In Arizona, Utah, Colorado, Montana, Wyoming, Idaho, and southern Nevada contact:

Nelco Electronix
6970 S. Holly Circle, #205
Englewood, CO 80112
Telephone: 720-493-9630
Facsimile: 720-493-9631

In Mississippi, Alabama, Georgia, Tennessee, South Carolina and North Carolina contact:

Adeptronics, Inc.
9694 Madison Boulevard Suite A-14
Madison, Alabama 35758
Telephone: 256-772-1922
Facsimile: 256-325-2841

In Indiana, Kentucky, Ohio, Michigan, and western Pennsylvania contact:

CCR Electronics, Inc.
8425 Woodfield Crossing Blvd
Suite 100
Indianapolis, Indiana 46420-2495
Telephone: 317-469-4855

In Hong Kong and the People's Republic of China contact:

Alphatron
2L, Cooke Street/F
G/F, Hung Hom
Kowloon Bay, Hong Kong
Telephone: 852-2303-1290
Facsimile: 852-2900-3616

In Korea contact:

H. B. Corp.
#1409, Seocho World Officetel,
1355-3, Seocho-Dong, Seocho-Ku,
Seoul, Korea 137-070
Telephone: (02)3472-3450
Facsimile: (02)3472-3458

In Singapore, Indonesia and Malaysia contact:

EXER Technologies (S) PTE LTD
45 Kaki Bukit Industrial Terrace
Singapore 416125
Telephone: (65)-6-747-9669
Facsimile: (65)-6-749-9669

In Israel contact:

Phoenix Technologies Ltd.
3 Gavish Road
HuKfar-Saba, 44424
Israel
Telephone: 09-764-4800
Facsimile: 09-764-4801

In the United Kingdom contact:

Electronics 2000 Ltd.
Grafton House, Grafton Street
High Wycombe, Bucks HP12 3AJ
Telephone: 44-1494-444044
Facsimile: 44-1494-470499

In Taiwan contact:

Maxtek Technology Co., Ltd.
5F, NO. 13-20, Sec. 6, Min-Chian E. Road, Nei Hu
Taipei, 114, R.O.C.
Telephone: 886-2-2794-6060
Facsimile: 886-2-2879-8922

Catch our web site at "<http://www.mix-sig.com>"

Send us e-mail at "info@mix-sig.com"

Mixed Signal Integration Corporation reserves the right to change any product or specification without notice at any time. Mixed Signal Integration products are not designed or authorized for use in life support systems. Mixed Signal Integration assumes no responsibility for errors in this document.