

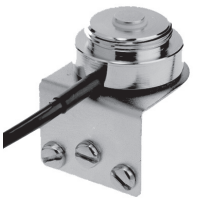


TGBWP Series

1-1/8"-18 thread; trunk/hood groove bracket mount

STANDARD CONFIGURATION

Model	Length of Coax	Coax	Connector*	Cable Exit Angle	Type
TGBWP45-NC	17'	RG-58A/U	None	45°	N/A
TGBWP45C-NC	17'	RG-58/U	None	45°	N/A
TGBWP45	17'	RG-58A/U	PL259	45°	Crimp
TGBWP45C	17'	RG-58/U	TNC Plug	45°	Crimp
TGBWP45PL	17'	RG-58/U	Mini-UHF	45°	Crimp
TGBWP45FFME	17'	RG-58/U	Female FME*	45°	Crimp
TGBWP45NCP	17'	RG-58/U	N	45°	Crimp



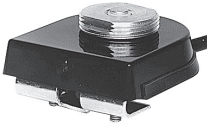
TGBWP45

T Series

1-1/8"-18 thread mount; trunk lid mount

STANDARD CONFIGURATION

Model	Length of Coax	Coax	Connector*	Type
TTT	NA	None	None	N/A
T-NC	17'	RG-58A/U	None	N/A
TC-NC	17'	RG-58/U	None	N/A
T	17'	RG-58A/U	PL259	Solder
TP	17'	RG-58/U	PTFE PL259	Solder
TBN	17'	RG-58/U	BNC	Crimp
TC	17'	RG-58/U	TNC	Crimp
TNCP	17'	RG-58/U	N	Crimp
TPL	17'	RG-58/U	Mini-UHF	Crimp



T

BMT Series

Black 1-1/8"-18 thread; all metal trunk lid mount

STANDARD CONFIGURATION

Model	Length of Coax	Coax	Connector*	Type
BMT-NC	17'	RG-58A/U	None	N/A
BMTC-NC	17'	RG-58/U	None	N/A
BMT	17'	RG-58A/U	PL259	Solder
BMTBN	17'	RG-58/U	BNC	Crimp
BMTC	17'	RG-58/U	TNC	Crimp
BMTPL	17'	RG-58/U	Mini-UHF	Crimp



BMT

* Connectors are shipped loose. Connectors may be attached upon request for an additional charge. For other connector options, please refer to the Mobile Antenna Mounts Configurator Part Number Guide.