

VenU® Dual-Band, 802.11 ac Sector Antennas

The FPMI2458 dual-band sector antennas can be used for 802.11n, ac MIMO applications. The antennas cover both 2.4-2.5 GHz and 4.9-5.9 GHz in one radome. The UV-protected radome is constructed from lightweight, durable plastic. The antennas can be used with a single access point to provide full dual-band 802.11n, ac MIMO coverage. The elements can also be used individually or in combination to provide diversity/nondiversity coverage with legacy 802.11n, ac access points.



Features

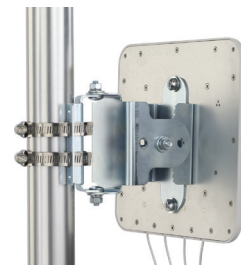
- UL 94 HB ASA radome and PC board conform to UL's high flame retardant rating, allowing maximum installation flexibility
- Meets stringent building code requirements
- Attractive, low-profile housing blends well with indoor and outdoor environments where aesthetic considerations are important
- Screws and anchors for wall mount included; adjustable mounting brackets sold separately
- Dual-band performance on each port



FPMI2458-DP4RPSMA



FPM-1005 mount



STANDARD CONFIGURATION

Model	Cable	Connector	Mount
FPMI2458-DP4RPSMA	Four 32-inch UL94 RG-316	RPSMA Plug	Wall mount FPM-1005 adjustable mounting bracket sold separately. (all models)
FPMI2458-TP3RPSMA	Three 32-inch UL94 RG-316	RPSMA Plug	
FPMI2458-DP2RPSMA	Two 32-inch UL94 RG-316	RPSMA Plug	
FPMI245865-TP3NM	Three 32-inch UL94 RG-316	N Male	

ELECTRICAL SPECIFICATIONS - RF ANTENNA

Model	Frequency Range	Gain	VSWR	Azimuth Half Power Beamwidth	Elevation Half Power Beamwidth
FPMI2458-DP4RPSMA	2.4-2.5 GHz / 5.1-5.9 GHz	6 dBi / 5 dBi	1.5 typical, 2.0 maximum	85° / 60°	80° / 65°
FPMI2458-TP3RPSMA	2.4-2.5 GHz / 4.9-5.9 GHz	6 dBi / 5 dBi	1.5 typical, 2.0 maximum	100° / 75	90° / 60°
FPMI2458-DP2RPSMA	2.4-2.5 GHz / 4.9-5.875 GHz	6 dBi / 5 dBi	1.5 typical, 2.0 maximum	85° / 60°	80° / 65°
FPMI245865-TP3NM	2.4-2.5 GHz / 4.9-5.85 GHz	8 dBi / 8 dBi	1.5 typical, 2.0 maximum	70° / 60°	70° / 55°

ELECTRICAL SPECIFICATIONS - RF ANTENNA, continued (ALL MODELS)

Front to Back Ratio	Average Power	Nominal Impedance	Polarization
20 dB typical	20 watts	50 ohms	Vertical, linear, ± 45° slant linear

MECHANICAL & ENVIRONMENTAL SPECIFICATIONS (ALL MODELS)

Dimensions	Weight	Housing Material	Ingress Protection	Rated Wind	Temperature Range
7.88 L x 7.88 W x 1.34 H in (20 x 20 x 3.4 cm)	1 lb (0.45 kg)	White UV-stable ASA	IP67*	125 mph	-40°F to +158°F (-40°C to +70°C)

* When installed according to the manufacturer's installation instructions.