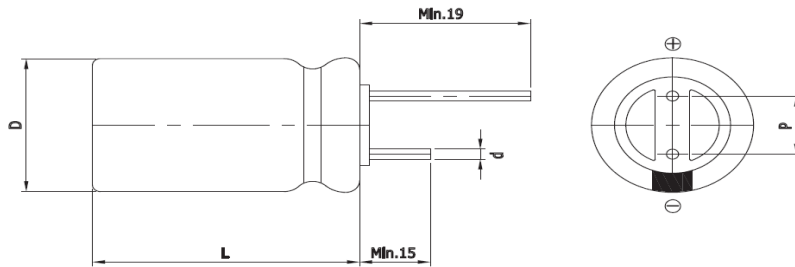


## FEATURES

### EDLC (Electric Double Layer Capacitor)

- High Power Density (Low ESR)
- Over 500,000 cycle life (semi-permanent)
- Higher energy density compared with 2.7V caps
- RoHS compliant
- Long-term reliability improved at high temperature and humidity(65°C 90%RH)

## Drawing



D (Φ)	16.0 +1.0 Max
L (mm)	25.0 ±1.5
d (Φ)	0.8 ±0.1
P (mm)	7.5 ±0.5

## SPECIFICATION

ITEM		CHARACTERISTICS	
Product series		EDLC	
Rated Voltage ( $V_R$ )		3.0V	
Operating Temperature		-40 ~ +65°C	
Capacitance Tolerance		-10 ~ +30%	
High Temperature Load Life		After 1,000 hours at $V_R$ loaded under +65°C, capacitors meet the following criteria.	
		Capacitance Change	≤ 30% of initial value
		ESR	≤ 2 times of specified value
Cycle Life Characteristics	Cycle	Over 500,000	
	$\Delta C$	≤ 30% of initial value	
	ESR	≤ 2 times of specified value	
	Method	Cycle of Charge/discharge from $V_R$ to $1/2V_R$	
Shelf Life		2 Years No Electrical Charge, Temperature below 70°C ( $\Delta C$ : ≤ 10% of initial value / $\Delta ESR$ : ≤ 50% of specified value)	

Part Number	Rated Voltage (V)	Capacitance (F)	ESR (mΩ)		Max. Current (A)	Leakage Current (mA, 72hr)	Size (mm)
			AC(1kHz)	DC			D x L
WEC 3R0 256 QG	3.0	25	25	40	18.5	0.075	16 x 25

\* Max. Current : 1 sec. discharge to  $1/2V_R$