

BLVD CRESCENT

FLOOR PLANS

D O W N T O W N
D U B A I

DOWNTOWN
DUBAI

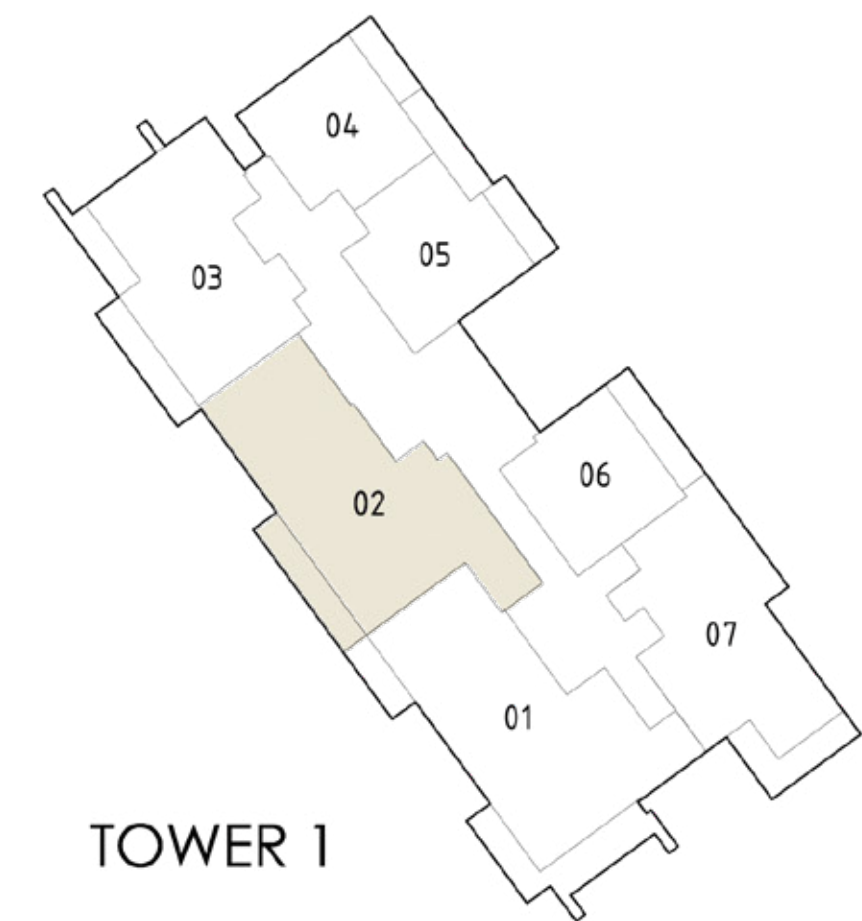
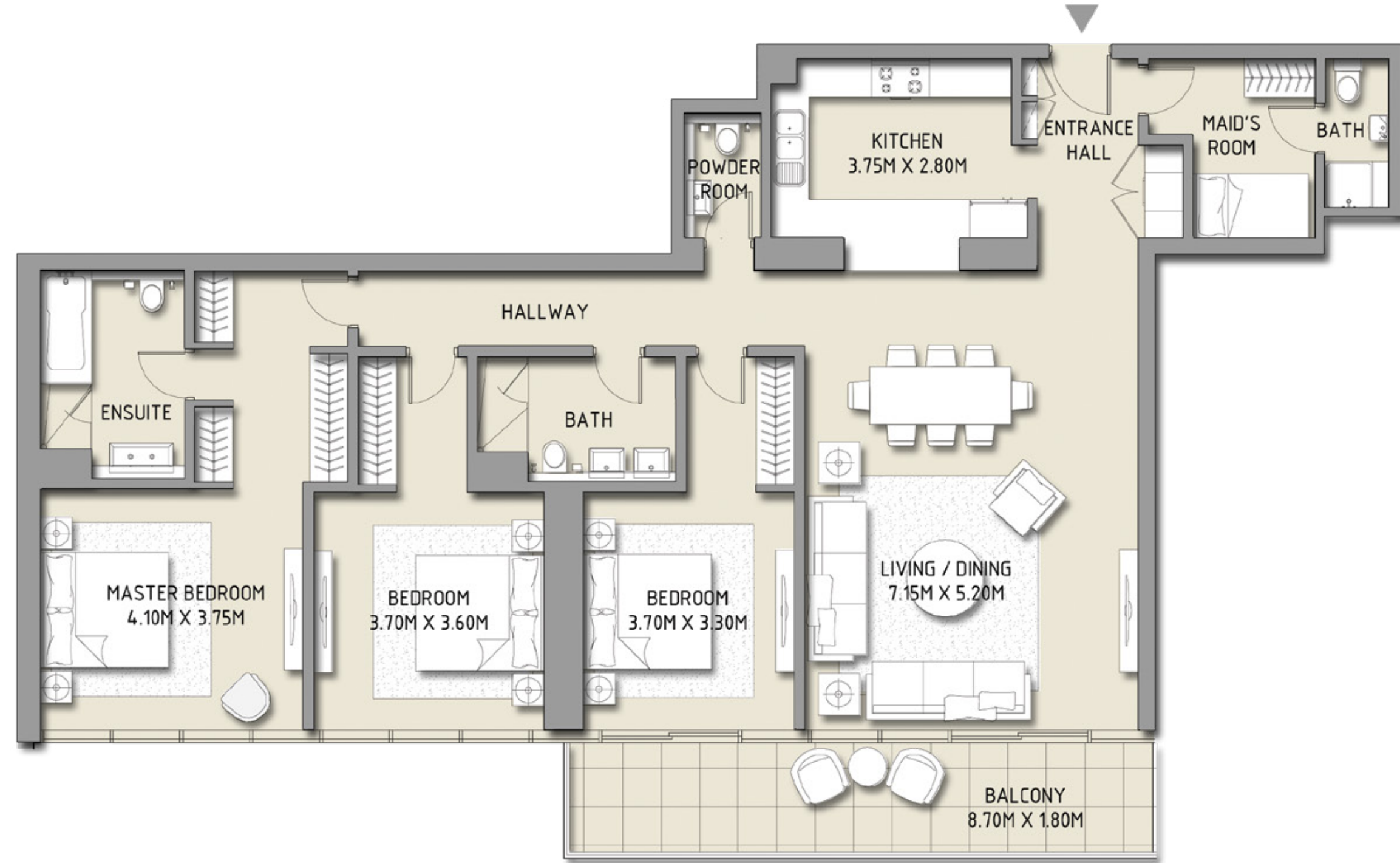
BLVD CRESCENT

LEVEL 02 - 12
TOWER 1

3 BEDROOM

UNIT 2

SUITE AREA	1785.41 SQ.FT.	165.87 SQ.M.
BALCONY AREA	171.90 SQ.FT.	15.97 SQ.M.
TOTAL AREA	1957.31 SQ.FT.	181.84 SQ.M.



Disclaimer: 1. All room dimensions are measured to structural elements and exclude wall finishes and construction tolerances. 2. All dimensions have been provided by our consultant architects. 3. All materials, dimensions & drawings are approximate. Information is subject to change without notice. 4. Actual suite area may vary from the stated area. Drawings not to scale. The developer reserves the right to make revisions. 5. Calculation of suite area is measured as the area bounded by the centre line of demising or partition walls separating one unit from another unit, the exterior face of all exterior walls, and the exterior face of the corridor wall enclosing the adjoining unit. 6. Calculation of balcony area is measured as the area bounded by the centre line of demising or partition walls separating one unit from another unit, the outmost face of the enclosing guard and the external face of the unit adjoining the balcony. 7. The units are measured at typical floor in the building. Columns may vary in size depending on the floor level.

DOWNTOWN
DUBAI

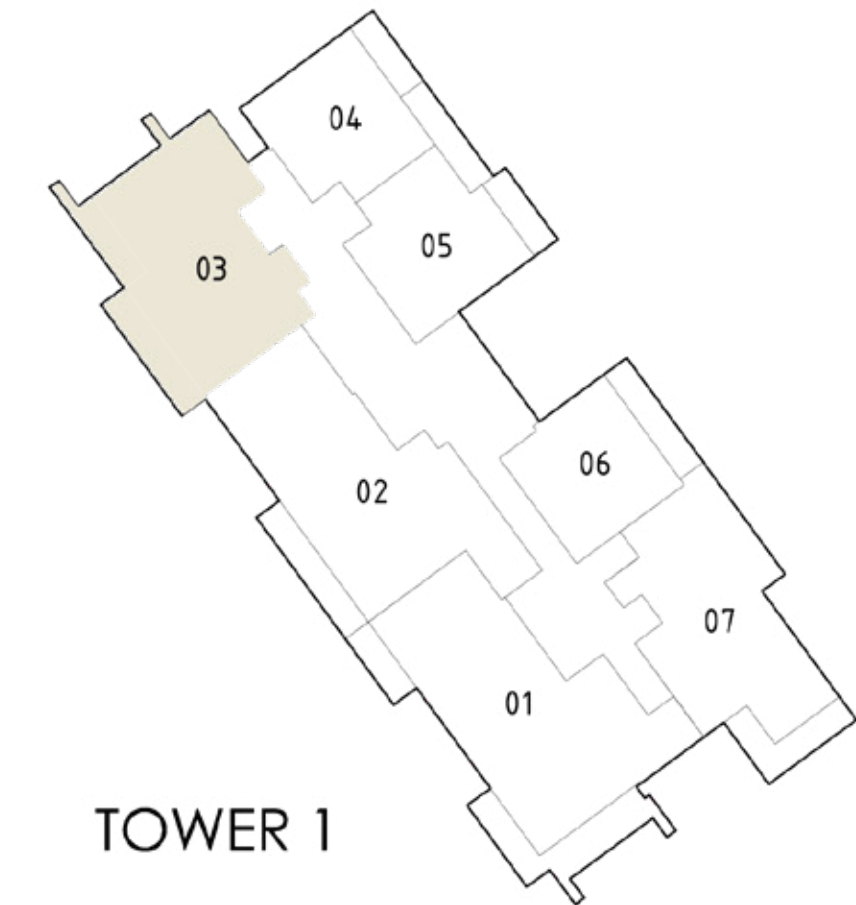
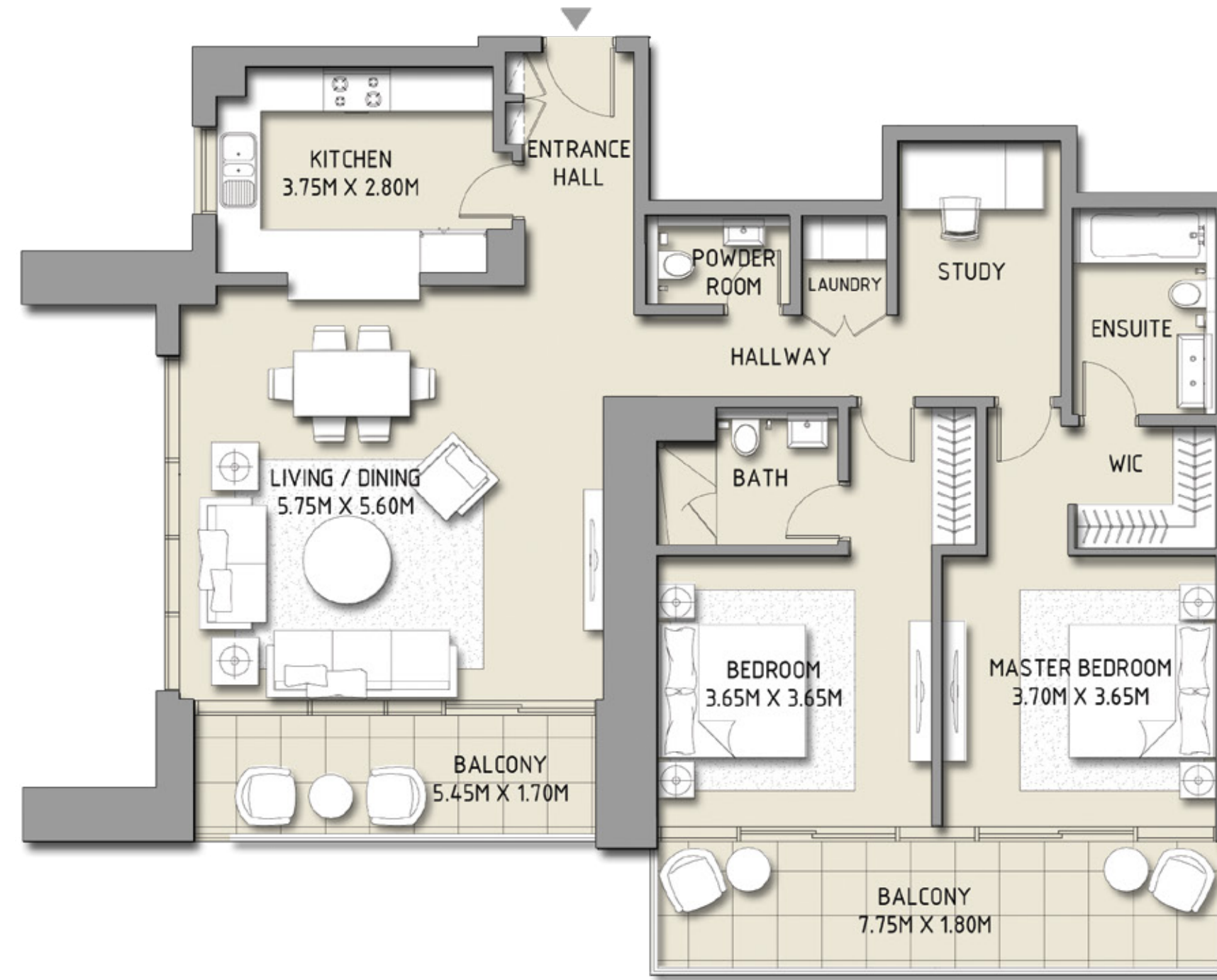
BLVD CRESCENT

LEVEL 02 - 12
TOWER 1

2 BEDROOM

UNIT 3

SUITE AREA	1366.80 SQ.FT.	126.98 SQ.M.
BALCONY AREA	257.58 SQ.FT.	23.93 SQ.M.
TOTAL AREA	1624.38 SQ.FT.	150.91 SQ.M.



Disclaimer: 1. All room dimensions are measured to structural elements and exclude wall finishes and construction tolerances. 2. All dimensions have been provided by our consultant architects. 3. All materials, dimensions & drawings are approximate. Information is subject to change without notice. 4. Actual suite area may vary from the stated area. Drawings not to scale. The developer reserves the right to make revisions. 5. Calculation of suite area is measured as the area bounded by the centre line of demising or partition walls separating one unit from another unit, the exterior face of all exterior walls, and the exterior face of the corridor wall enclosing the adjoining unit. 6. Calculation of balcony area is measured as the area bounded by the centre line of demising or partition walls separating one unit from another unit, the outmost face of the enclosing guard and the external face of the unit adjoining the balcony. 7. The units are measured at typical floor in the building. Columns may vary in size depending on the floor level.

DOWNTOWN
DUBAI

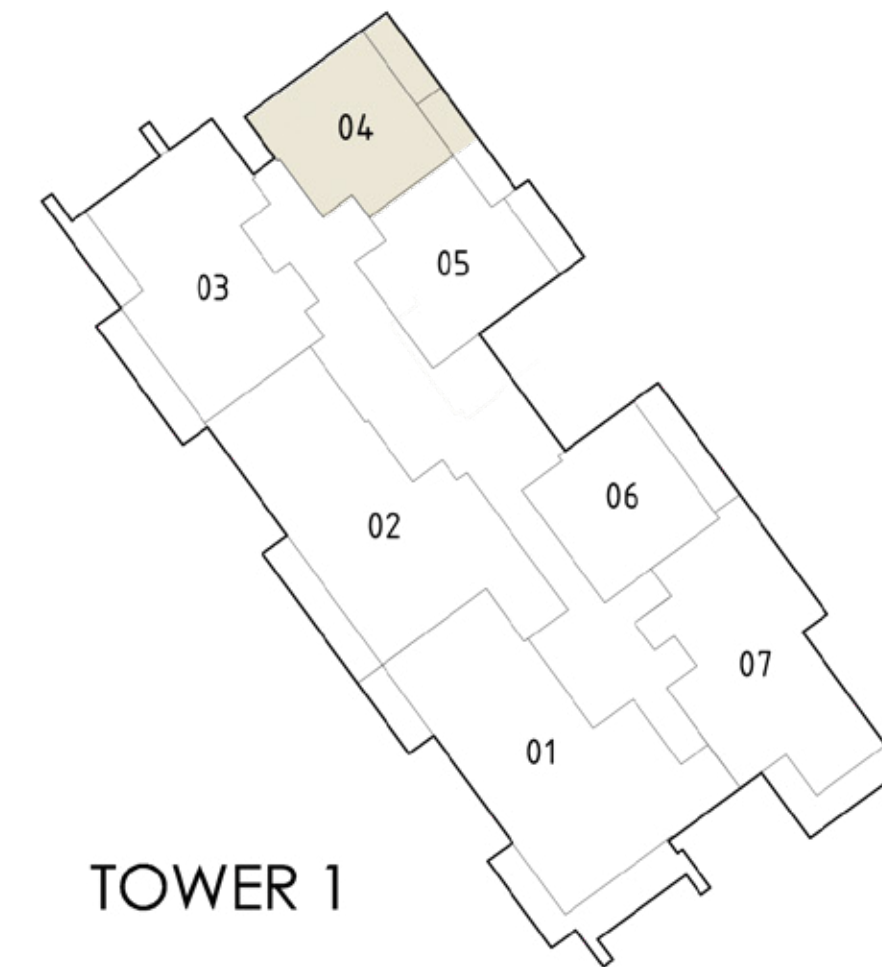
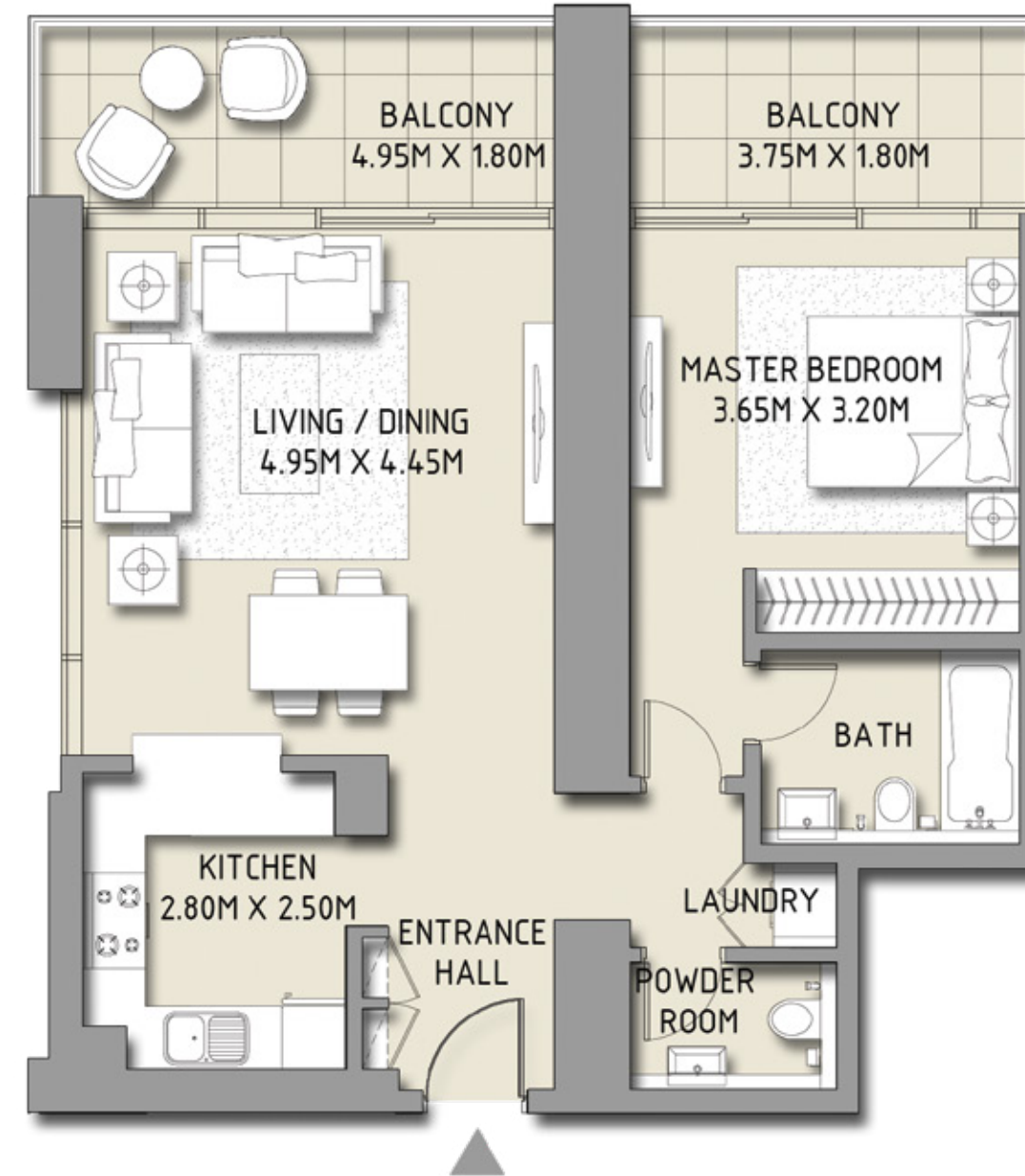
BLVD CRESCENT

LEVEL 02 - 12
TOWER 1

1 BEDROOM

UNIT 4

SUITE AREA	770.80 SQ.FT.	71.61 SQ.M.
BALCONY AREA	176.10 SQ.FT.	16.36 SQ.M.
TOTAL AREA	946.90 SQ.FT.	87.97 SQ.M.



Disclaimer: 1. All room dimensions are measured to structural elements and exclude wall finishes and construction tolerances. 2. All dimensions have been provided by our consultant architects. 3. All materials, dimensions & drawings are approximate. Information is subject to change without notice. 4. Actual suite area may vary from the stated area. Drawings not to scale. The developer reserves the right to make revisions. 5. Calculation of suite area is measured as the area bounded by the centre line of demising or partition walls separating one unit from another unit, the exterior face of all exterior walls, and the exterior face of the corridor wall enclosing the adjoining unit. 6. Calculation of balcony area is measured as the area bounded by the centre line of demising or partition walls separating one unit from another unit, the outmost face of the enclosing guard and the external face of the unit adjoining the balcony. 7. The units are measured at typical floor in the building. Columns may vary in size depending on the floor level.

DOWNTOWN DUBAI

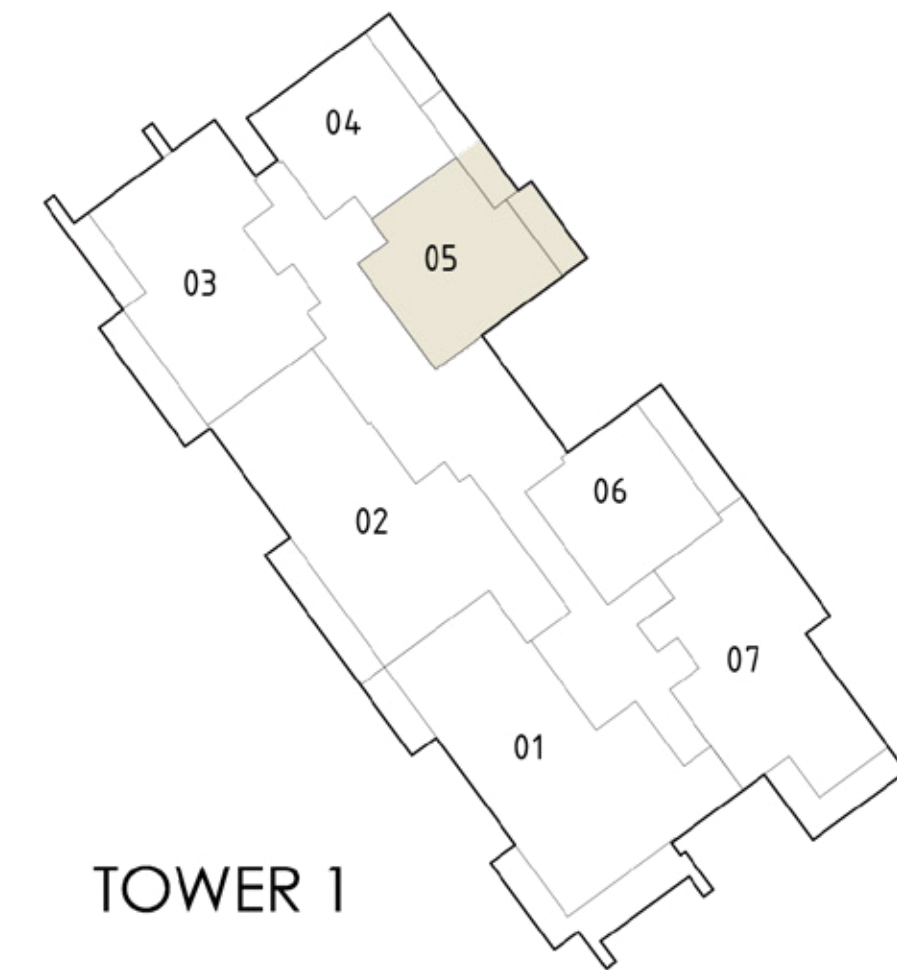
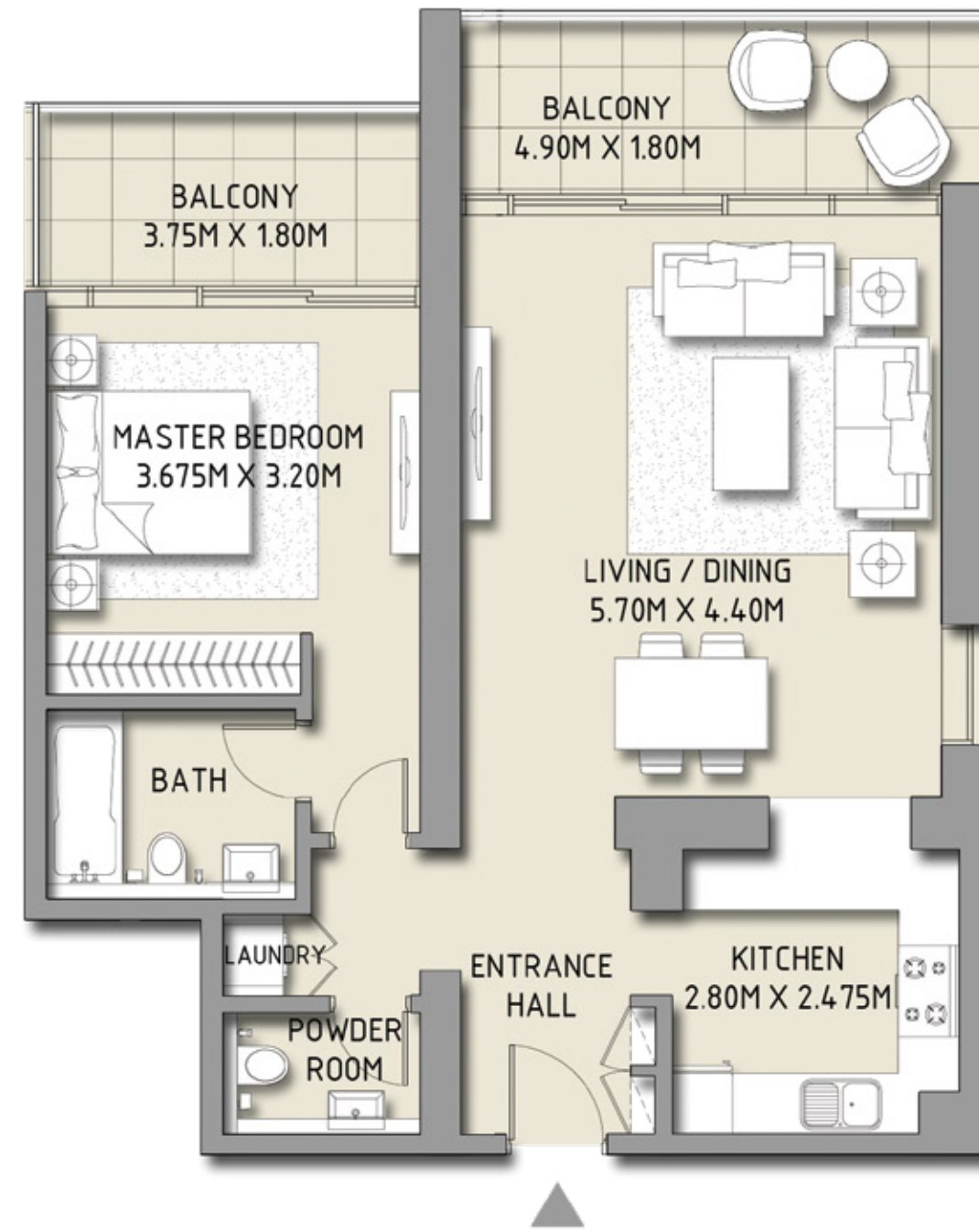
BLVD CRESCENT

LEVEL 02 - 12
TOWER 1

1 BEDROOM

UNIT 5

SUITE AREA	826.24 SQ.FT.	76.76 SQ.M.
BALCONY AREA	175.13 SQ.FT.	16.27 SQ.M.
TOTAL AREA	1001.37 SQ.FT.	93.03 SQ.M.



Disclaimer: 1. All room dimensions are measured to structural elements and exclude wall finishes and construction tolerances. 2. All dimensions have been provided by our consultant architects. 3. All materials, dimensions & drawings are approximate. Information is subject to change without notice. 4. Actual suite area may vary from the stated area. Drawings not to scale. The developer reserves the right to make revisions. 5. Calculation of suite area is measured as the area bounded by the centre line of demising or partition walls separating one unit from another unit, the exterior face of all exterior walls, and the exterior face of the corridor wall enclosing the adjoining unit. 6. Calculation of balcony area is measured as the area bounded by the centre line of demising or partition walls separating one unit from another unit, the outmost face of the enclosing guard and the external face of the unit adjoining the balcony. 7. The units are measured at typical floor in the building. Columns may vary in size depending on the floor level.

DOWNTOWN
DUBAI

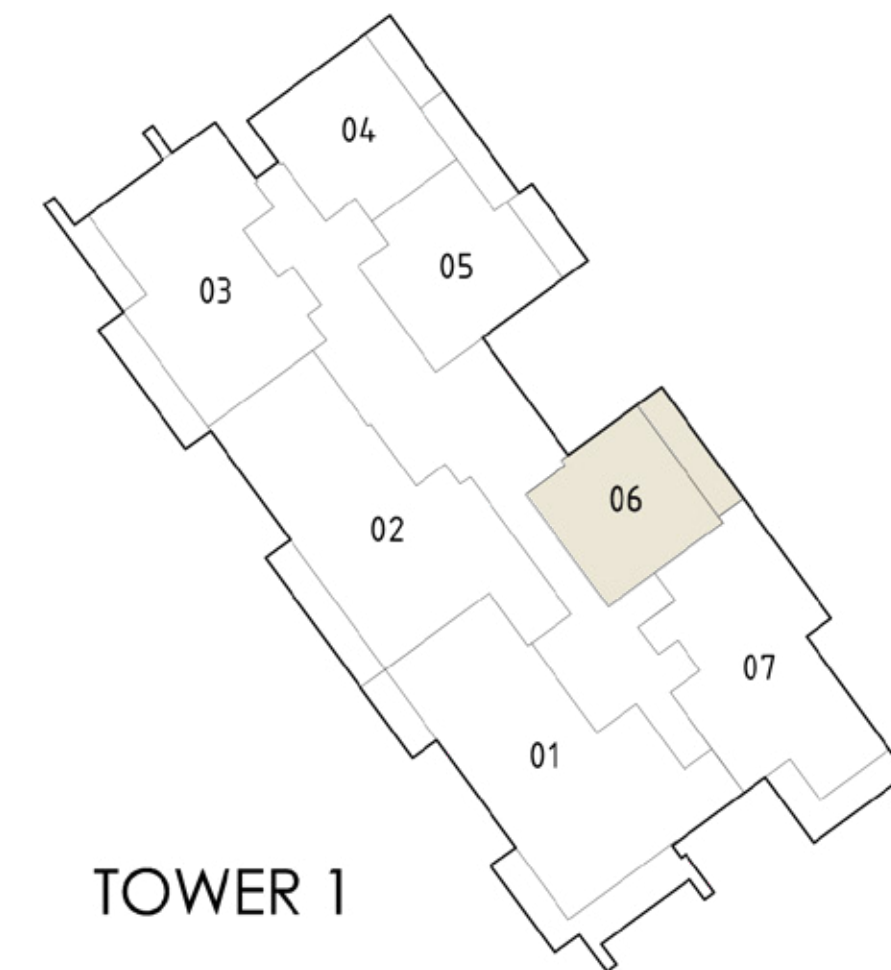
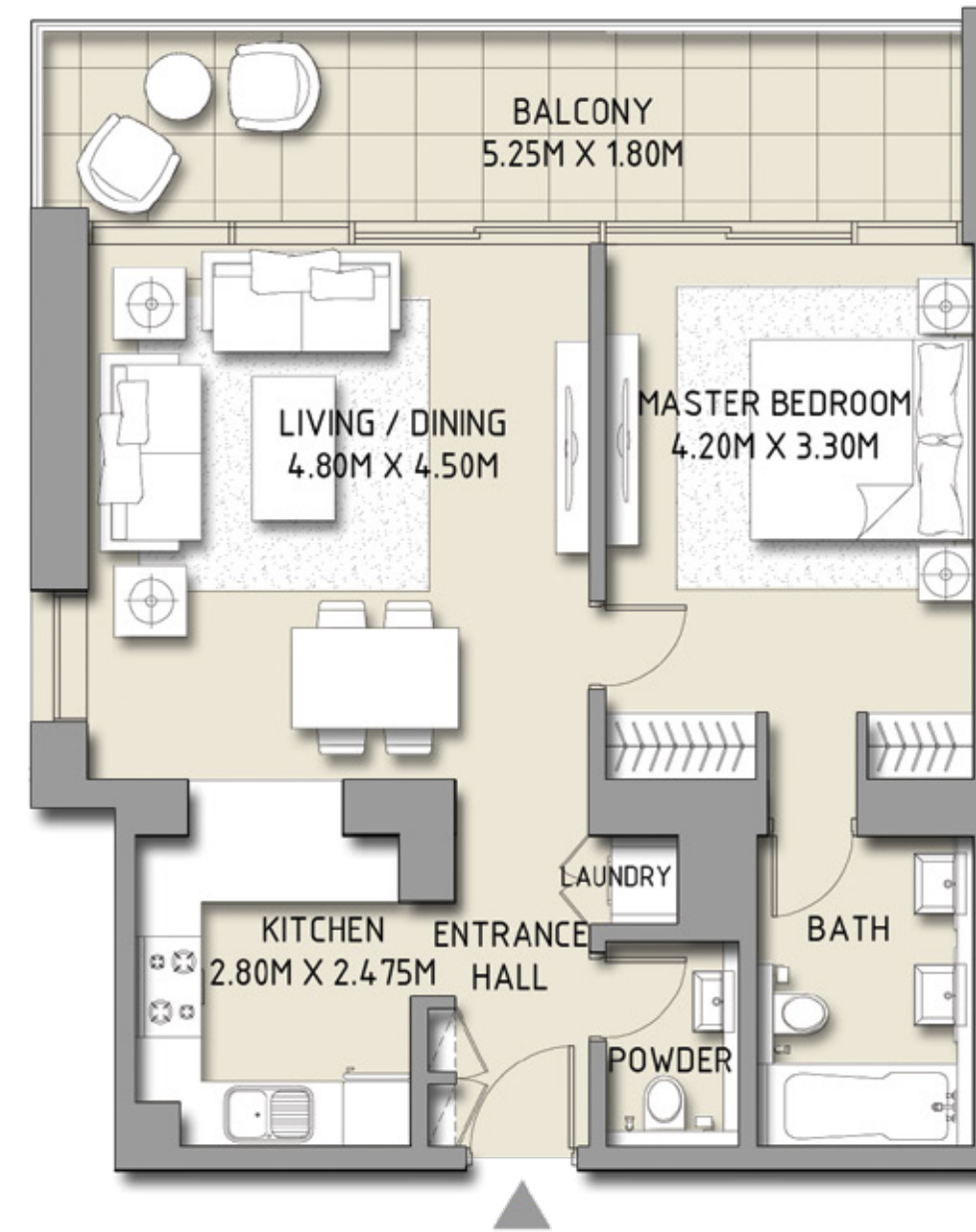
BLVD CRESCENT

LEVEL 02 - 12
TOWER 1

1 BEDROOM

UNIT 6

SUITE AREA	741.74 SQ.FT.	68.91 SQ.M.
BALCONY AREA	164.36 SQ.FT.	15.27 SQ.M.
TOTAL AREA	906.11 SQ.FT.	84.18 SQ.M.



Disclaimer: 1. All room dimensions are measured to structural elements and exclude wall finishes and construction tolerances. 2. All dimensions have been provided by our consultant architects. 3. All materials, dimensions & drawings are approximate. Information is subject to change without notice. 4. Actual suite area may vary from the stated area. Drawings not to scale. The developer reserves the right to make revisions. 5. Calculation of suite area is measured as the area bounded by the centre line of demising or partition walls separating one unit from another unit, the exterior face of all exterior walls, and the exterior face of the corridor wall enclosing the adjoining unit. 6. Calculation of balcony area is measured as the area bounded by the centre line of demising or partition walls separating one unit from another unit, the outmost face of the enclosing guard and the external face of the unit adjoining the balcony. 7. The units are measured at typical floor in the building. Columns may vary in size depending on the floor level.

DOWNTOWN
DUBAI

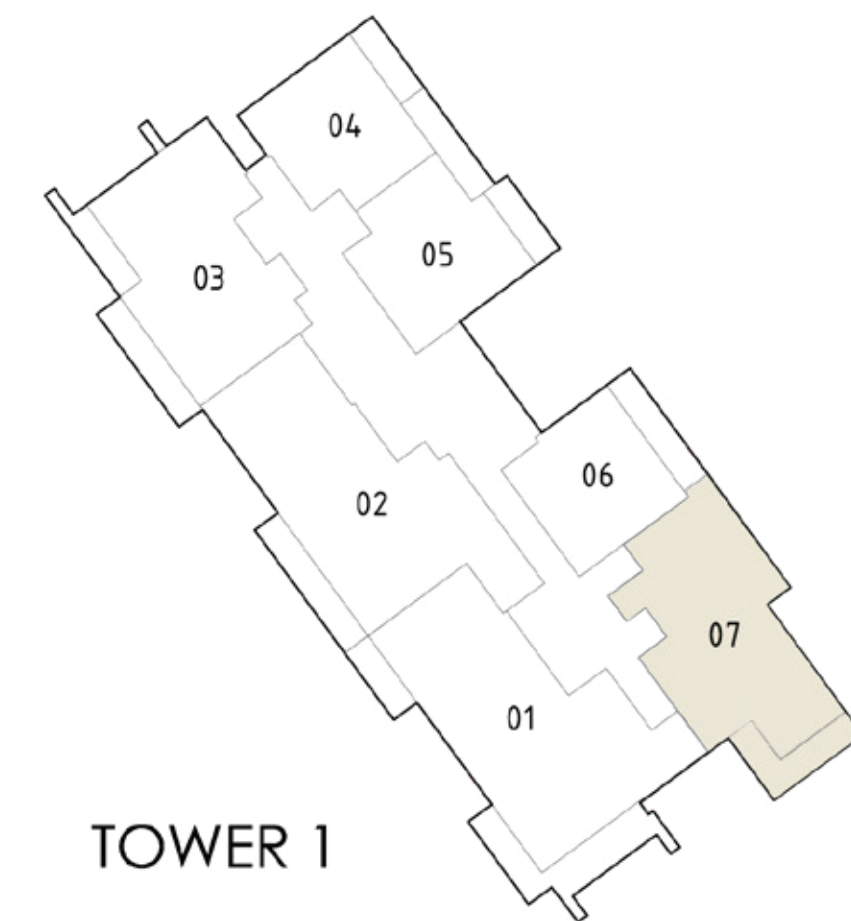
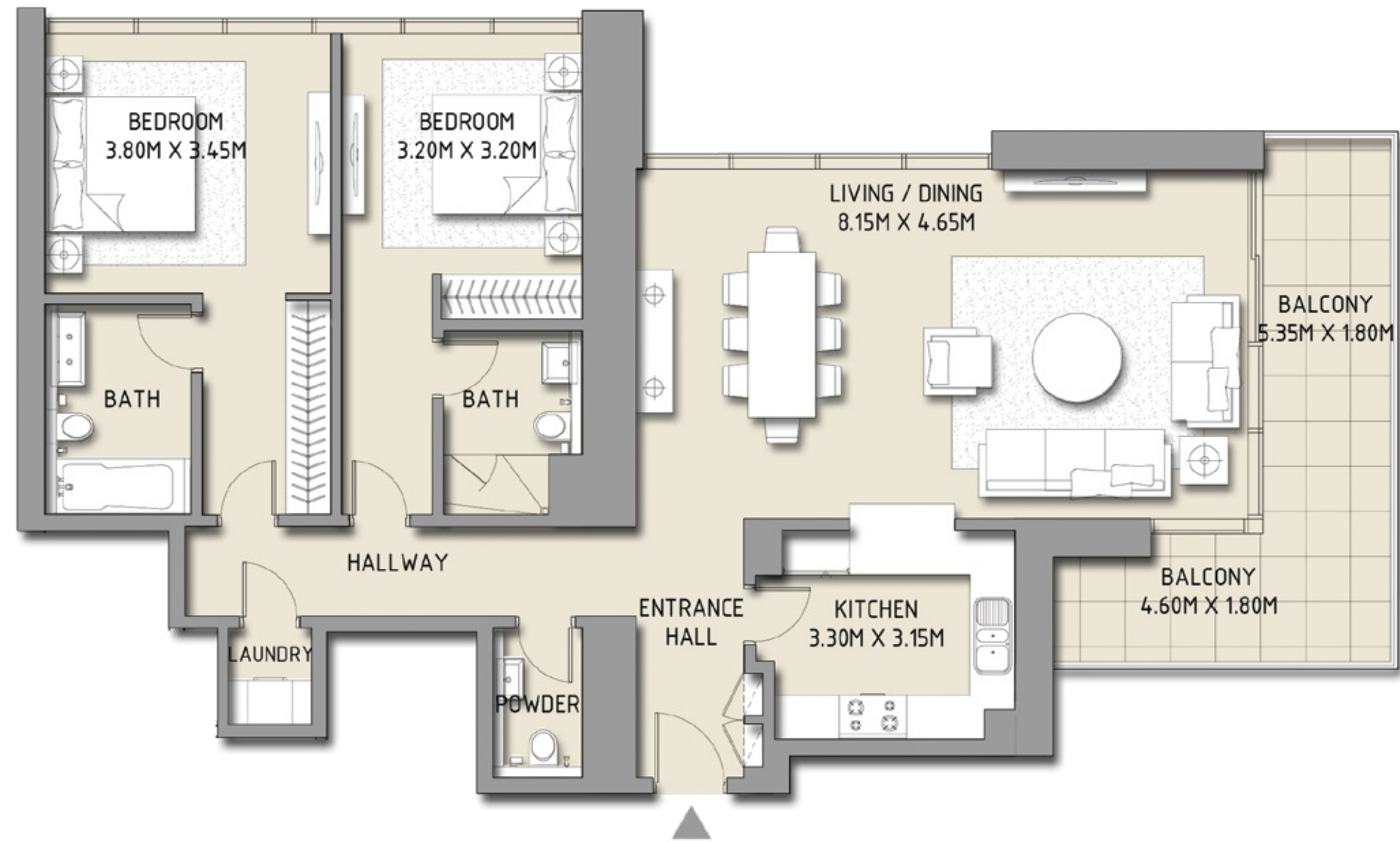
BLVD CRESCENT

LEVEL 02 - 12
TOWER 1

2 BEDROOM

UNIT 7

SUITE AREA	1350.44 SQ.FT.	125.46 SQ.M.
BALCONY AREA	188.37 SQ.FT.	17.50 SQ.M.
TOTAL AREA	1538.81 SQ.FT.	142.96 SQ.M.



Disclaimer: 1. All room dimensions are measured to structural elements and exclude wall finishes and construction tolerances. 2. All dimensions have been provided by our consultant architects. 3. All materials, dimensions & drawings are approximate. Information is subject to change without notice. 4. Actual suite area may vary from the stated area. Drawings not to scale. The developer reserves the right to make revisions. 5. Calculation of suite area is measured as the area bounded by the centre line of demising or partition walls separating one unit from another unit, the exterior face of all exterior walls, and the exterior face of the corridor wall enclosing the adjoining unit. 6. Calculation of balcony area is measured as the area bounded by the centre line of demising or partition walls separating one unit from another unit, the outmost face of the enclosing guard and the external face of the unit adjoining the balcony. 7. The units are measured at typical floor in the building. Columns may vary in size depending on the floor level.

DOWNTOWN
DUBAI

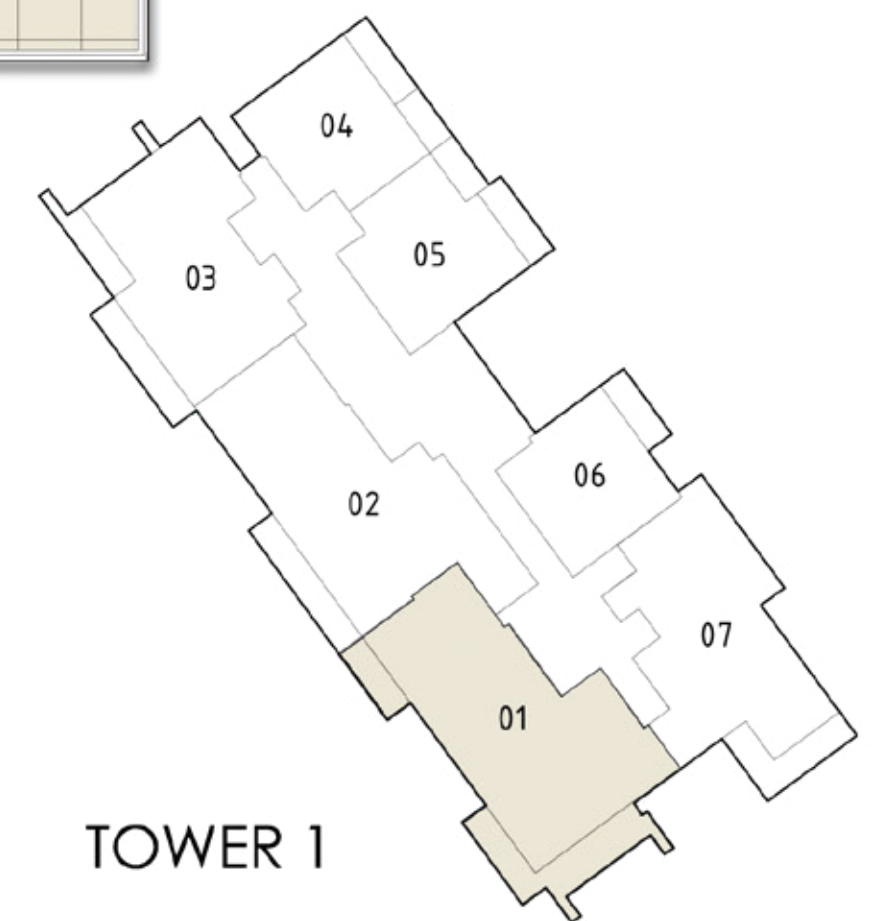
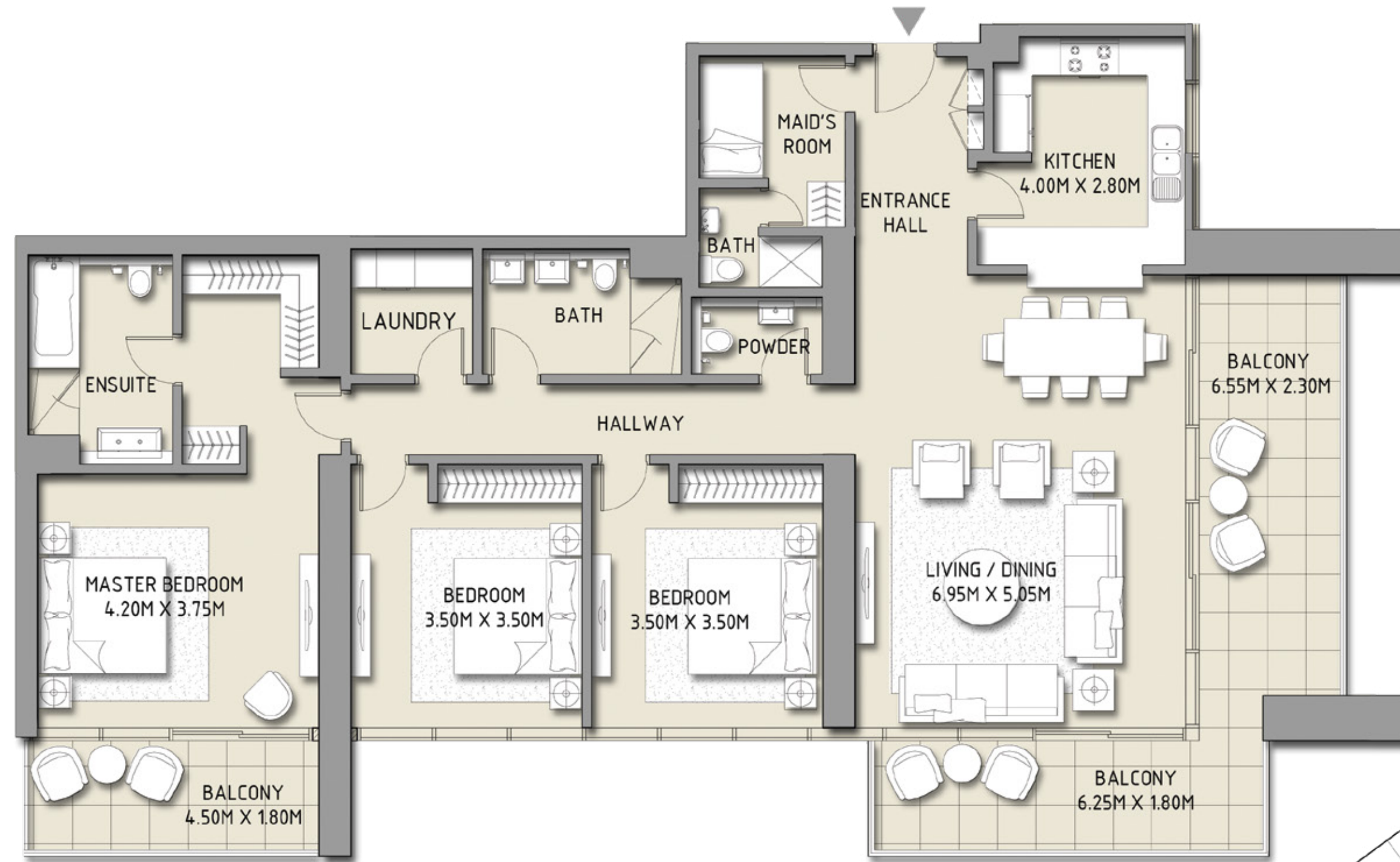
BLVD CRESCENT

LEVEL 10 - 30
TOWER 1

3 BEDROOM

UNIT 1

SUITE AREA	1765.50 SQ.FT.	164.02 SQ.M.
BALCONY AREA	384.59 SQ.FT.	35.73 SQ.M.
TOTAL AREA	2150.09 SQ.FT.	199.75 SQ.M.



Disclaimer: 1. All room dimensions are measured to structural elements and exclude wall finishes and construction tolerances. 2. All dimensions have been provided by our consultant architects. 3. All materials, dimensions & drawings are approximate. Information is subject to change without notice. 4. Actual suite area may vary from the stated area. Drawings not to scale. The developer reserves the right to make revisions. 5. Calculation of suite area is measured as the area bounded by the centre line of demising or partition walls separating one unit from another unit, the exterior face of all exterior walls, and the exterior face of the corridor wall enclosing the adjoining unit. 6. Calculation of balcony area is measured as the area bounded by the centre line of demising or partition walls separating one unit from another unit, the outmost face of the enclosing guard and the external face of the unit adjoining the balcony. 7. The units are measured at typical floor in the building. Columns may vary in size depending on the floor level.

DOWNTOWN
DUBAI

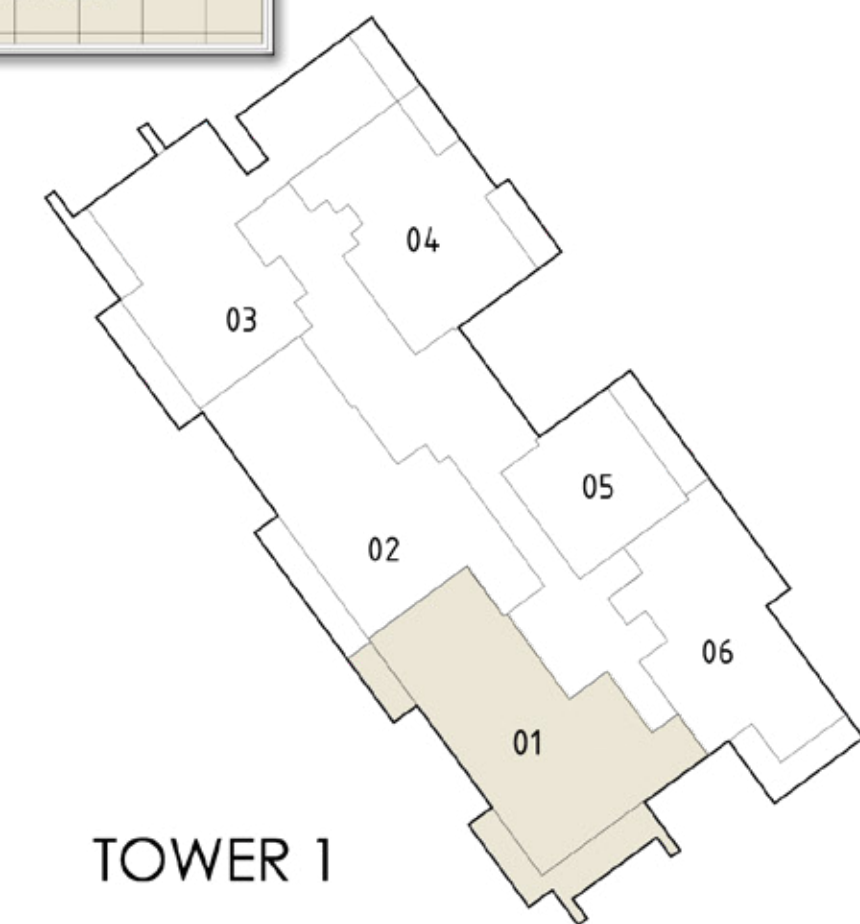
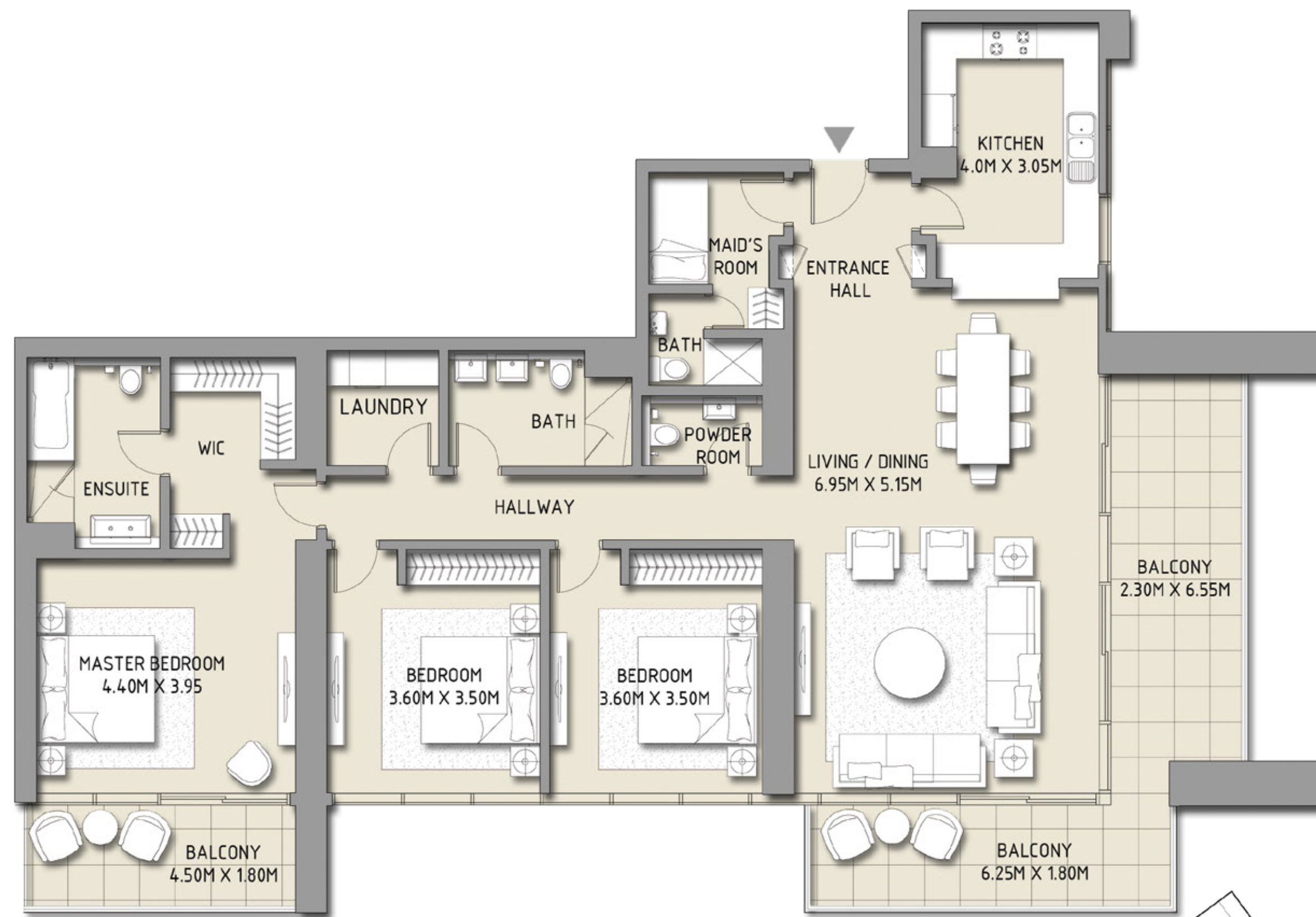
BLVD CRESCENT

LEVEL 12 - 9 - 20 - 22 - 29 - 31 - 37
TOWER 1

3 BEDROOM

UNIT 1

SUITE AREA	1840.95 SQ.FT.	171.03 SQ.M.
BALCONY AREA	384.59 SQ.FT.	35.73 SQ.M.
TOTAL AREA	2225.55 SQ.FT.	206.76 SQ.M.



Disclaimer: 1. All room dimensions are measured to structural elements and exclude wall finishes and construction tolerances. 2. All dimensions have been provided by our consultant architects. 3. All materials, dimensions & drawings are approximate. Information is subject to change without notice. 4. Actual suite area may vary from the stated area. Drawings not to scale. The developer reserves the right to make revisions. 5. Calculation of suite area is measured as the area bounded by the centre line of demising or partition walls separating one unit from another unit, the exterior face of all exterior walls, and the exterior face of the corridor wall enclosing the adjoining unit. 6. Calculation of balcony area is measured as the area bounded by the centre line of demising or partition walls separating one unit from another unit, the outmost face of the enclosing guard and the external face of the unit adjoining the balcony. 7. The units are measured at typical floor in the building. Columns may vary in size depending on the floor level.

DOWNTOWN
DUBAI

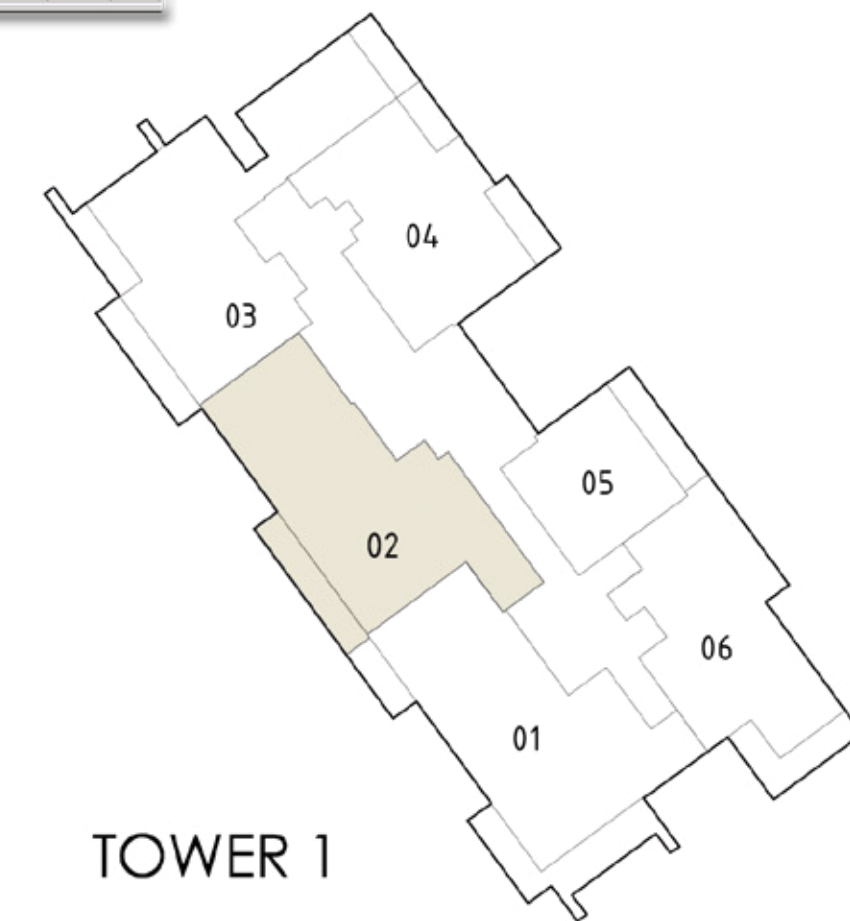
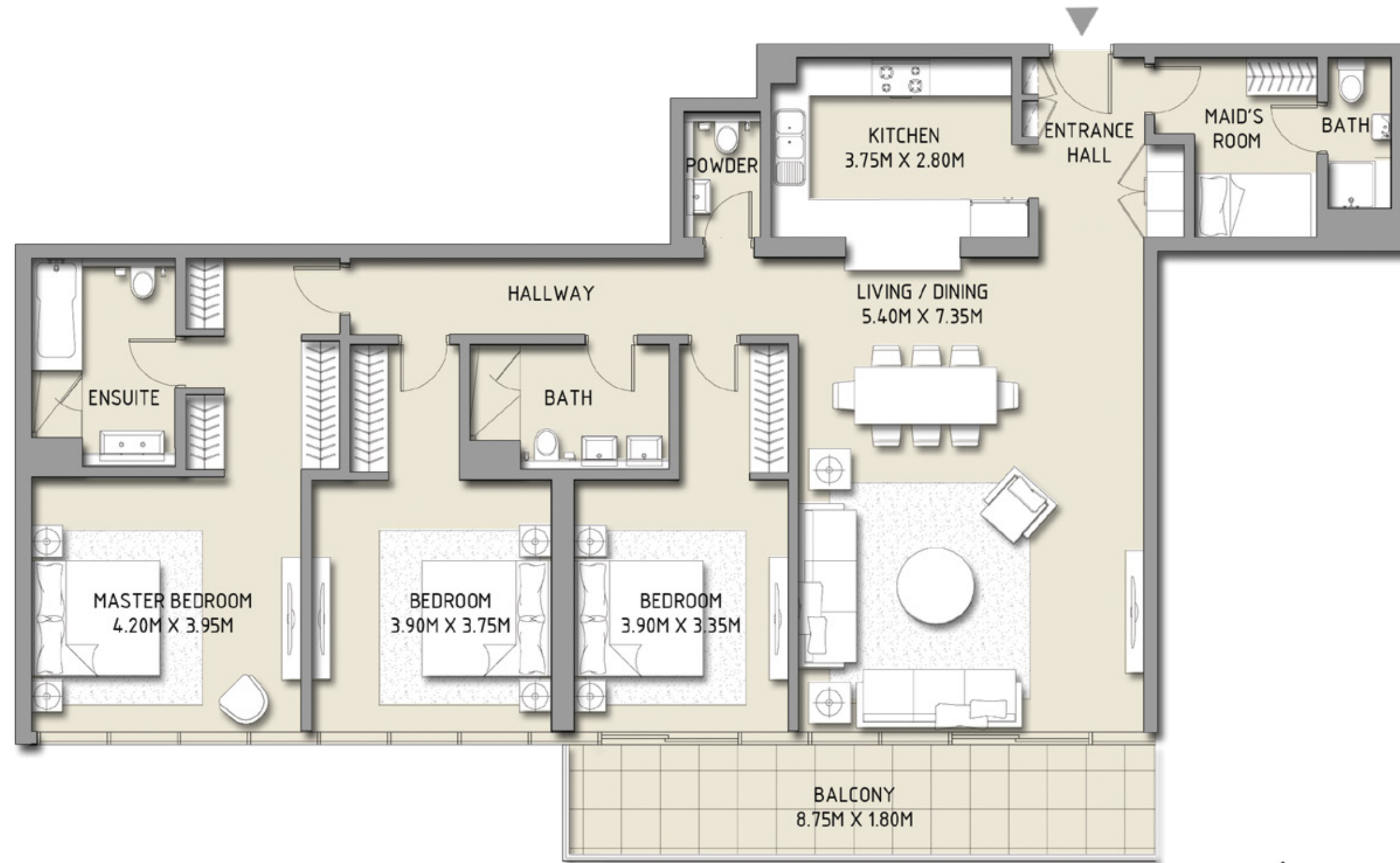
BLVD CRESCENT

LEVEL 13 - 20 - 22 - 29 - 37
TOWER 1

3 BEDROOM

UNIT 2

SUITE AREA	1797.14 SQ.FT.	166.96 SQ.M.
BALCONY AREA	171.90 SQ.FT.	15.97 SQ.M.
TOTAL AREA	1969.04 SQ.FT.	182.93 SQ.M.



Disclaimer: 1. All room dimensions are measured to structural elements and exclude wall finishes and construction tolerances. 2. All dimensions have been provided by our consultant architects. 3. All materials, dimensions & drawings are approximate. Information is subject to change without notice. 4. Actual suite area may vary from the stated area. Drawings not to scale. The developer reserves the right to make revisions. 5. Calculation of suite area is measured as the area bounded by the centre line of demising or partition walls separating one unit from another unit, the exterior face of all exterior walls, and the exterior face of the corridor wall enclosing the adjoining unit. 6. Calculation of balcony area is measured as the area bounded by the centre line of demising or partition walls separating one unit from another unit, the outmost face of the enclosing guard and the external face of the unit adjoining the balcony. 7. The units are measured at typical floor in the building. Columns may vary in size depending on the floor level.

DOWNTOWN
DUBAI

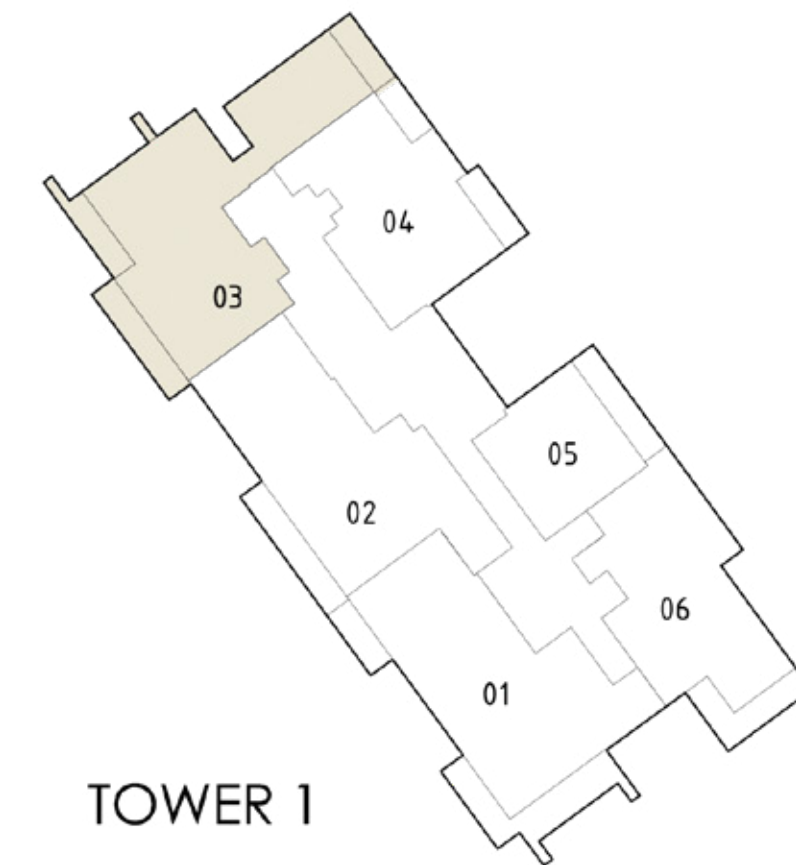
BLVD CRESCENT

LEVEL 13 - 20 - 22 - 13
TOWER 1

3 BEDROOM

UNIT 3

SUITE AREA	1841.60 SQ.FT.	171.09 SQ.M.
BALCONY AREA	356.07 SQ.FT.	33.08 SQ.M.
TOTAL AREA	2197.67 SQ.FT.	204.17 SQ.M.



Disclaimer: 1. All room dimensions are measured to structural elements and exclude wall finishes and construction tolerances. 2. All dimensions have been provided by our consultant architects. 3. All materials, dimensions & drawings are approximate. Information is subject to change without notice. 4. Actual suite area may vary from the stated area. Drawings not to scale. The developer reserves the right to make revisions. 5. Calculation of suite area is measured as the area bounded by the centre line of demising or partition walls separating one unit from another unit, the exterior face of all exterior walls, and the exterior face of the corridor wall enclosing the adjoining unit. 6. Calculation of balcony area is measured as the area bounded by the centre line of demising or partition walls separating one unit from another unit, the outmost face of the enclosing guard and the external face of the unit adjoining the balcony. 7. The units are measured at typical floor in the building. Columns may vary in size depending on the floor level.

DOWNTOWN
DUBAI

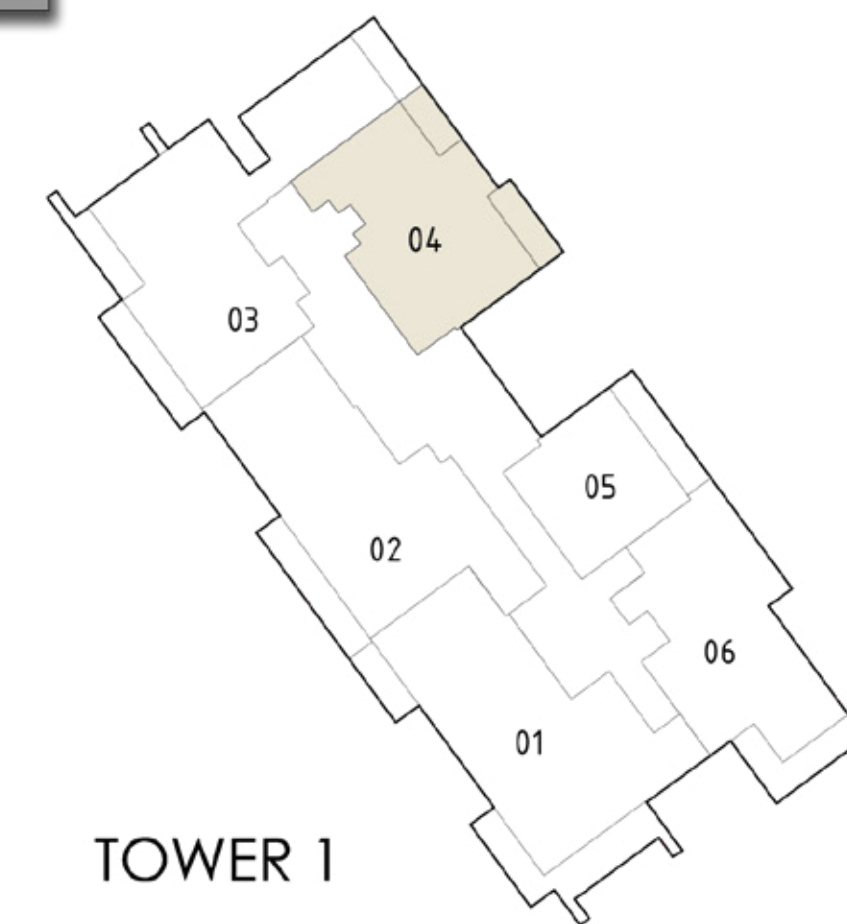
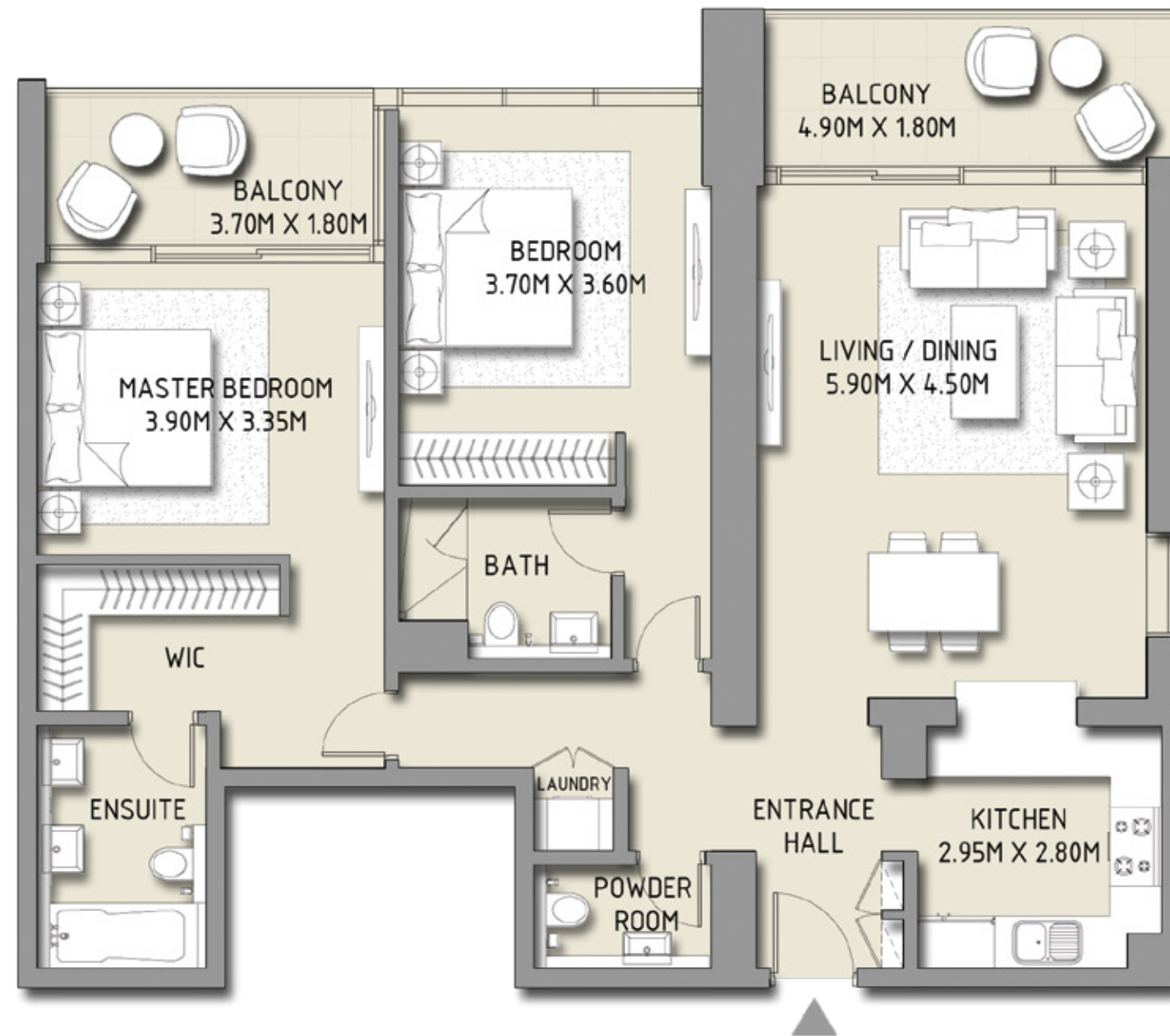
BLVD CRESCENT

LEVEL 13 - 20 - 22 - 37
TOWER 1

2 BEDROOM

UNIT 4

SUITE AREA	1228.59 SQ.FT.	114.14 SQ.M.
BALCONY AREA	175.67 SQ.FT.	16.32 SQ.M.
TOTAL AREA	1404.26 SQ.FT.	130.46 SQ.M.



Disclaimer: 1. All room dimensions are measured to structural elements and exclude wall finishes and construction tolerances. 2. All dimensions have been provided by our consultant architects. 3. All materials, dimensions & drawings are approximate. Information is subject to change without notice. 4. Actual suite area may vary from the stated area. Drawings not to scale. The developer reserves the right to make revisions. 5. Calculation of suite area is measured as the area bounded by the centre line of demising or partition walls separating one unit from another unit, the exterior face of all exterior walls, and the exterior face of the corridor wall enclosing the adjoining unit. 6. Calculation of balcony area is measured as the area bounded by the centre line of demising or partition walls separating one unit from another unit, the outmost face of the enclosing guard and the external face of the unit adjoining the balcony. 7. The units are measured at typical floor in the building. Columns may vary in size depending on the floor level.

DOWNTOWN
DUBAI

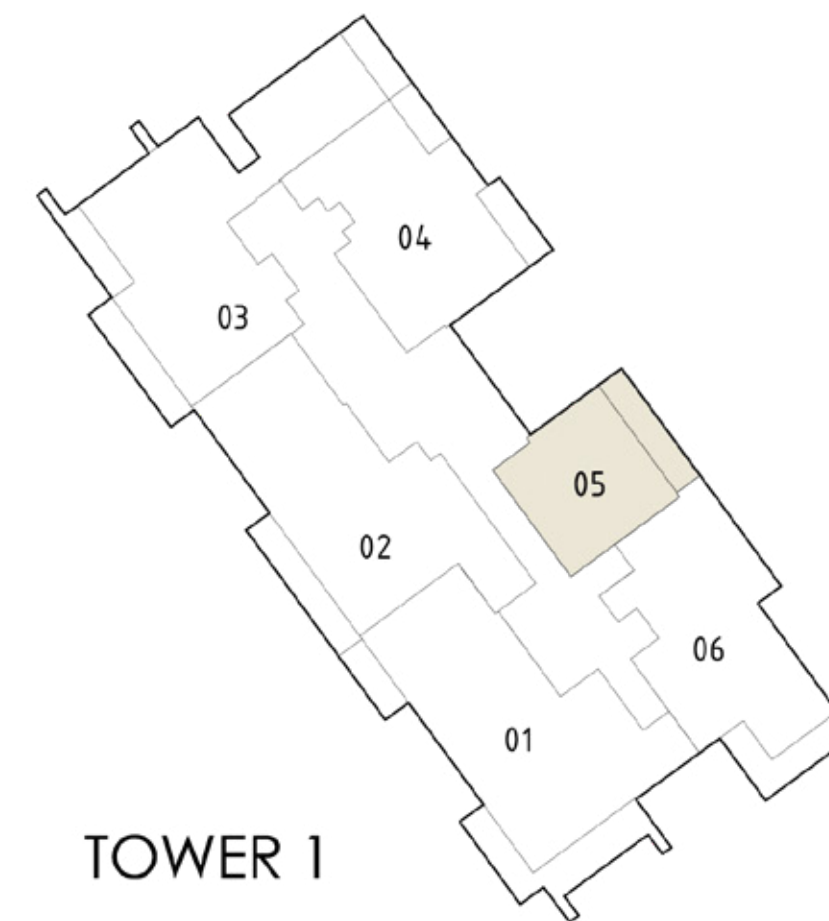
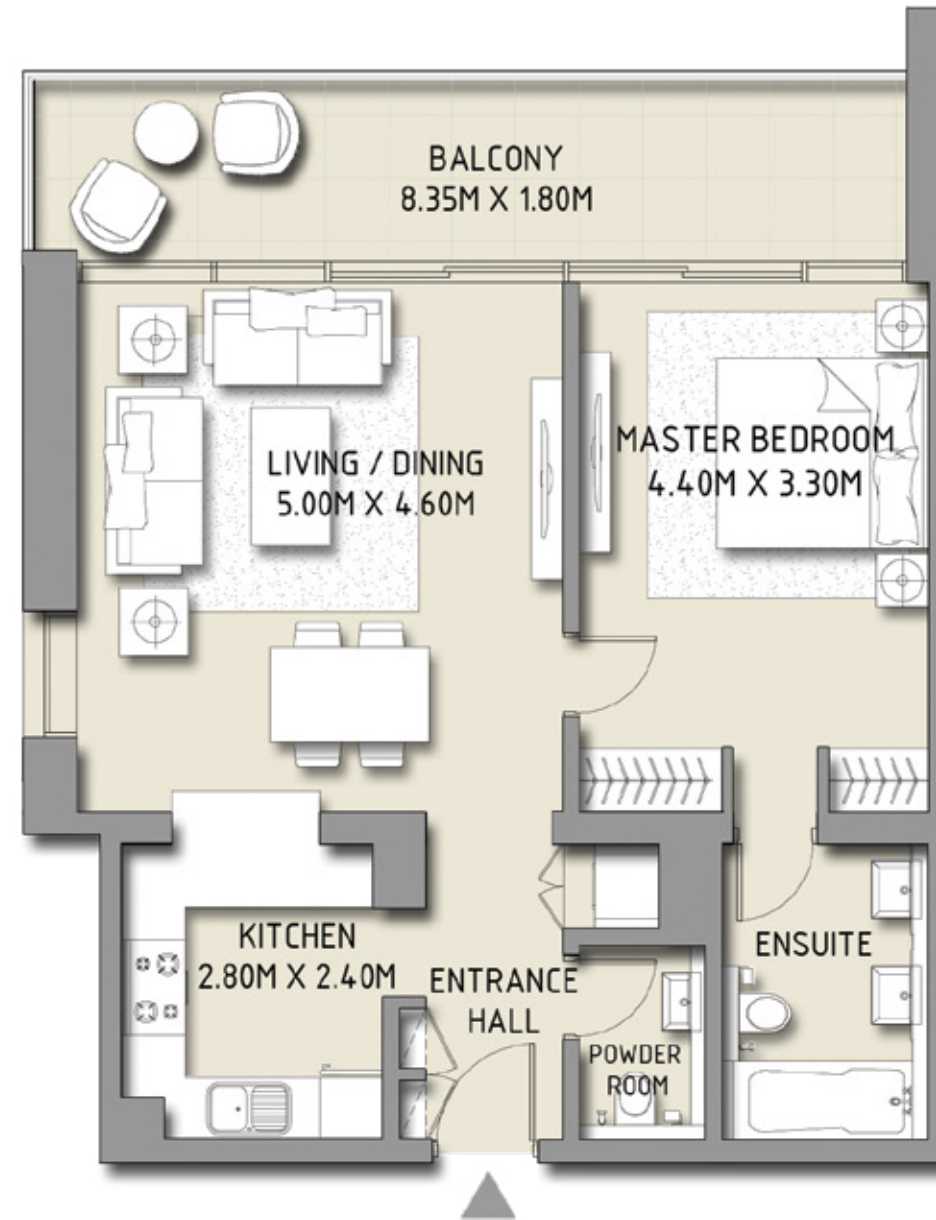
BLVD CRESCENT

LEVEL 13 - 20 - 22 - 37
TOWER 1

1 BEDROOM

UNIT 5

SUITE AREA	744.32 SQ.FT.	69.15 SQ.M.
BALCONY AREA	164.36 SQ.FT.	15.27 SQ.M.
TOTAL AREA	908.69 SQ.FT.	84.42 SQ.M.



Disclaimer: 1. All room dimensions are measured to structural elements and exclude wall finishes and construction tolerances. 2. All dimensions have been provided by our consultant architects. 3. All materials, dimensions & drawings are approximate. Information is subject to change without notice. 4. Actual suite area may vary from the stated area. Drawings not to scale. The developer reserves the right to make revisions. 5. Calculation of suite area is measured as the area bounded by the centre line of demising or partition walls separating one unit from another unit, the exterior face of all exterior walls, and the exterior face of the corridor wall enclosing the adjoining unit. 6. Calculation of balcony area is measured as the area bounded by the centre line of demising or partition walls separating one unit from another unit, the outmost face of the enclosing guard and the external face of the unit adjoining the balcony. 7. The units are measured at typical floor in the building. Columns may vary in size depending on the floor level.

DOWNTOWN DUBAI

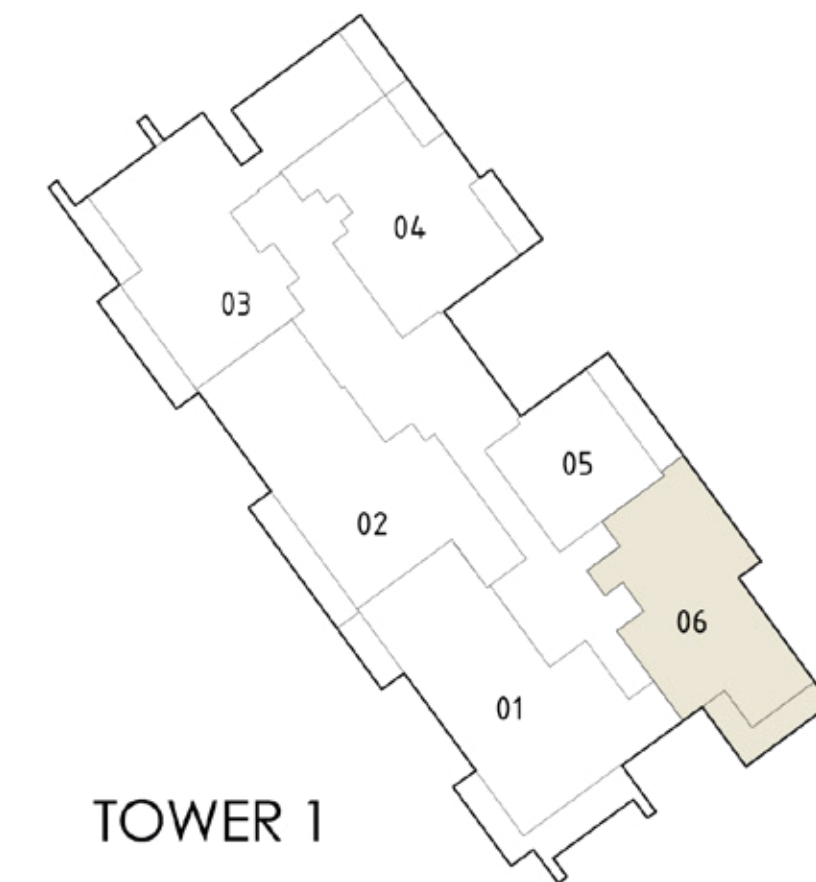
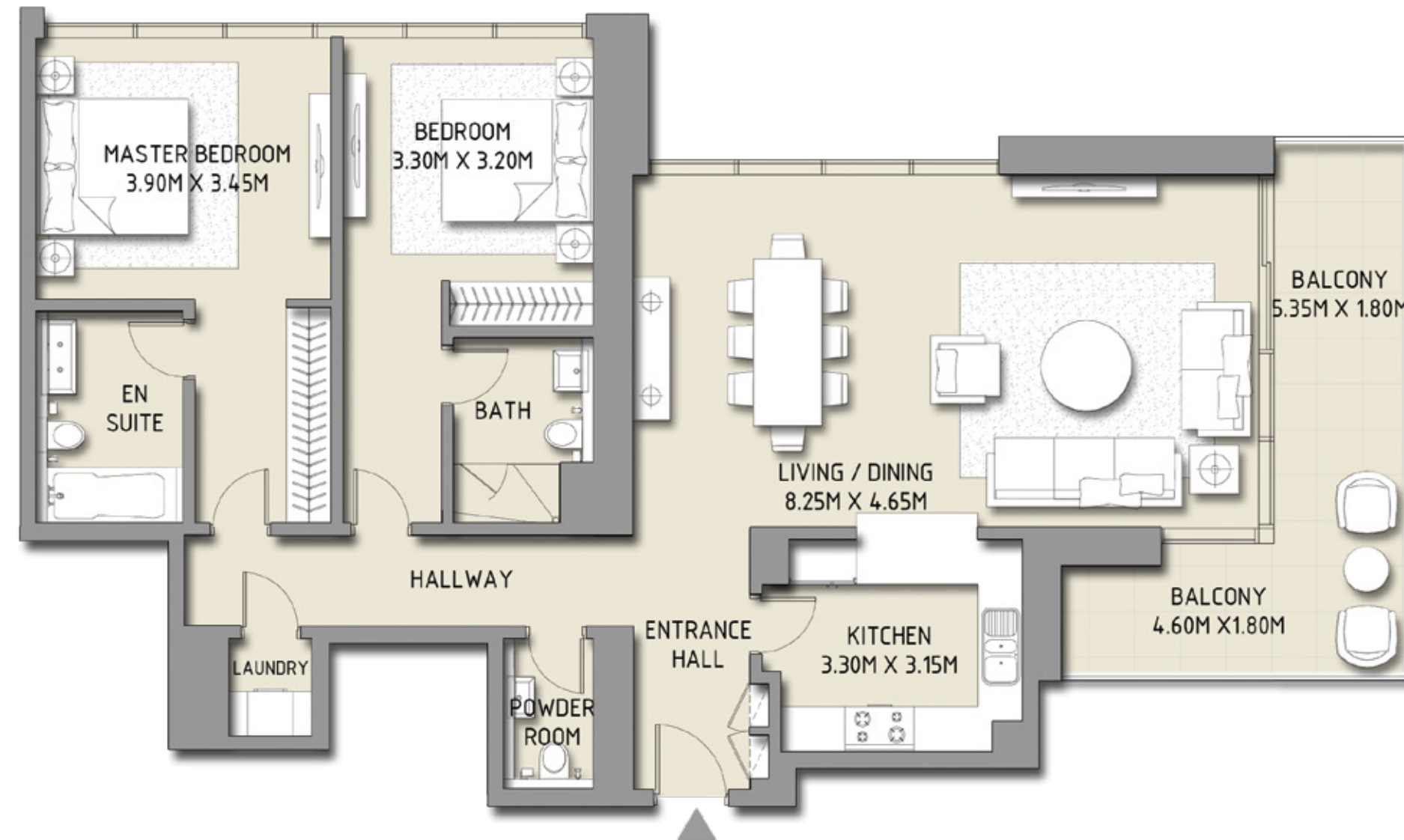
BLVD CRESCENT

LEVEL 13 - 20 - 22 - 37
TOWER 1

2 BEDROOM

UNIT 6

SUITE AREA	1349.04 SQ.FT.	125.33 SQ.M.
BALCONY AREA	188.48 SQ.FT.	17.51 SQ.M.
TOTAL AREA	1537.52 SQ.FT.	142.84 SQ.M.



Disclaimer: 1. All room dimensions are measured to structural elements and exclude wall finishes and construction tolerances. 2. All dimensions have been provided by our consultant architects. 3. All materials, dimensions & drawings are approximate. Information is subject to change without notice. 4. Actual suite area may vary from the stated area. Drawings not to scale. The developer reserves the right to make revisions. 5. Calculation of suite area is measured as the area bounded by the centre line of demising or partition walls separating one unit from another unit, the exterior face of all exterior walls, and the exterior face of the corridor wall enclosing the adjoining unit. 6. Calculation of balcony area is measured as the area bounded by the centre line of demising or partition walls separating one unit from another unit, the outmost face of the enclosing guard and the external face of the unit adjoining the balcony. 7. The units are measured at typical floor in the building. Columns may vary in size depending on the floor level.