

Use the **MATCH()** Function With the *fx* Wizard

The **MATCH()** function finds the position of a value within a cell range.

In the table below, you want to find the position of the value "White" in the "Color" column:

	A	B	C	D	E	F	G
1	Function: MATCH()						
2							
3		Position of the value "White"		Item	Color	Sales	
4				Pants	Blue	6,210	
5				Dress	Green	8,843	
6				Sweater	Red	2,201	
7				Dress	White	7,616	
8				Skirt	Green	5,136	

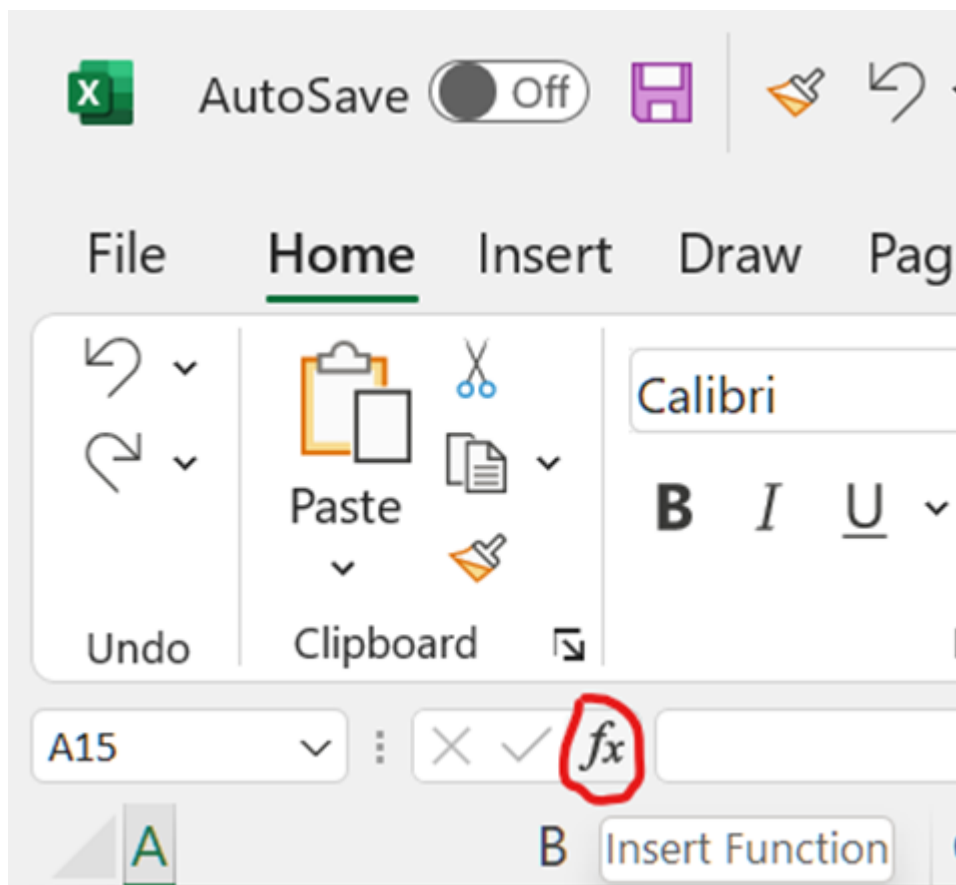
You want to know the position of the value "White" in the "Color" column

We can use the **MATCH()** function to find this position.

OPENCLASSROOMS

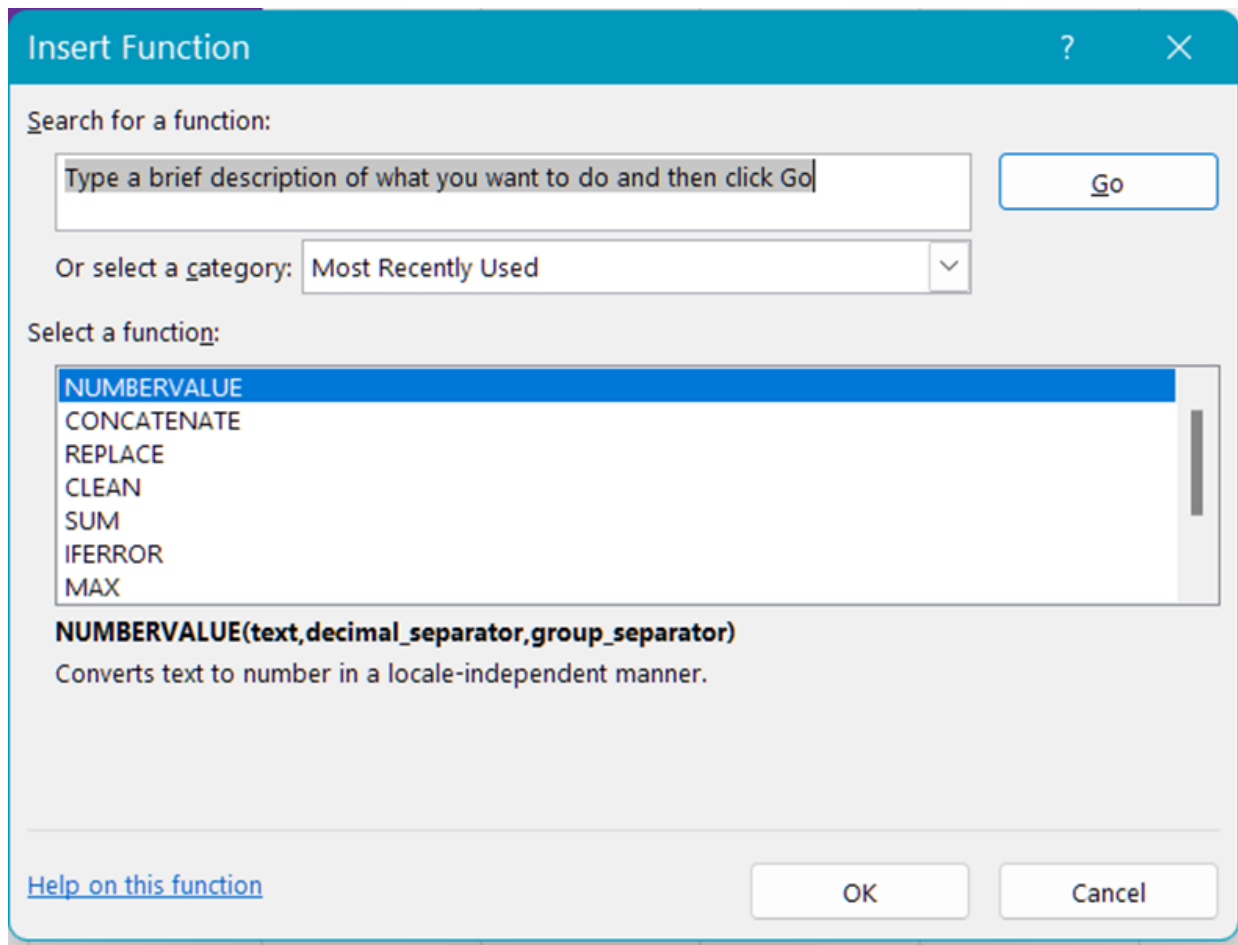
To use this function with the fx wizard:

- Click on the "fx" icon to the left of the formula bar:



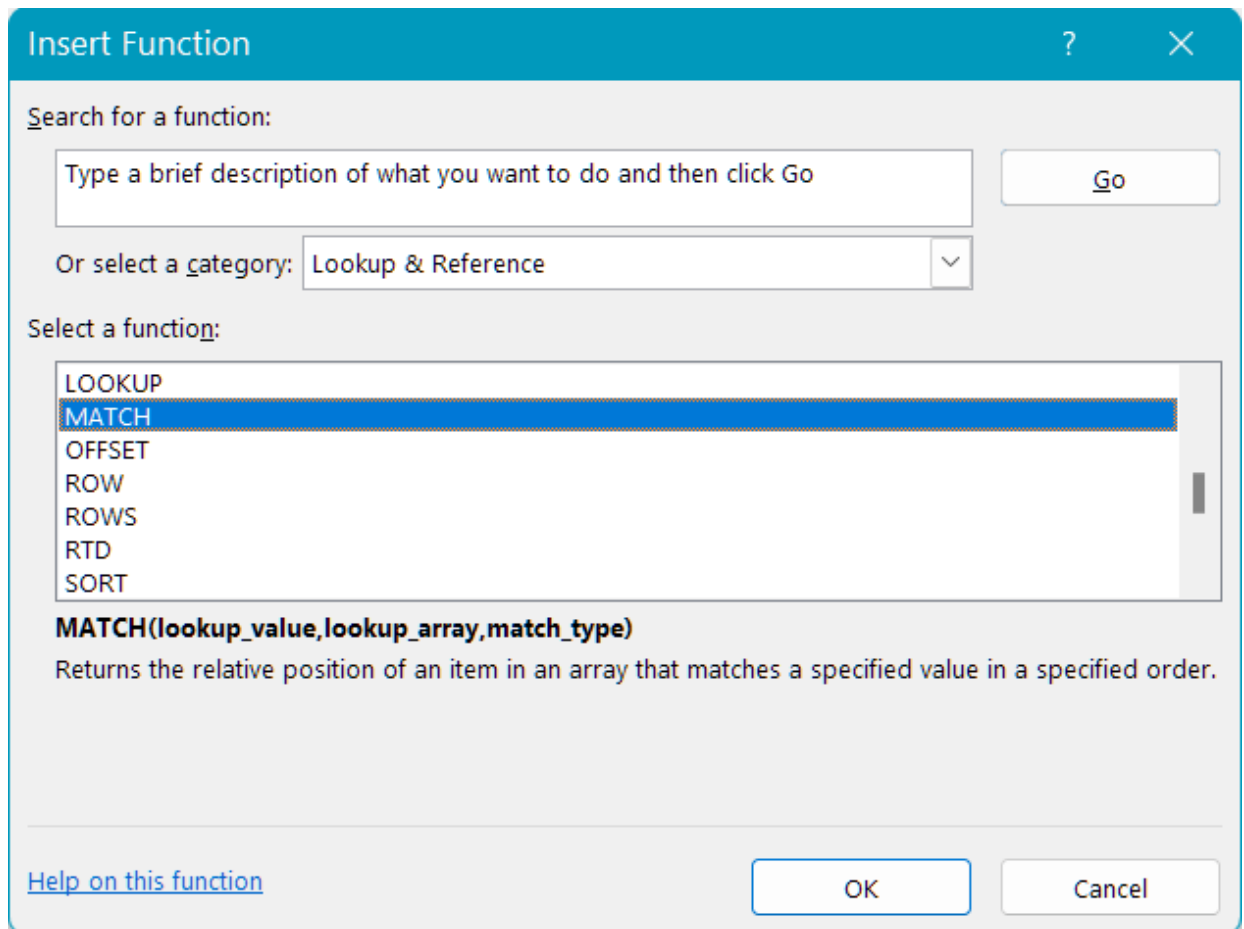
Click on the fx icon shown here in red

- The “Insert Function” dialog box opens up:



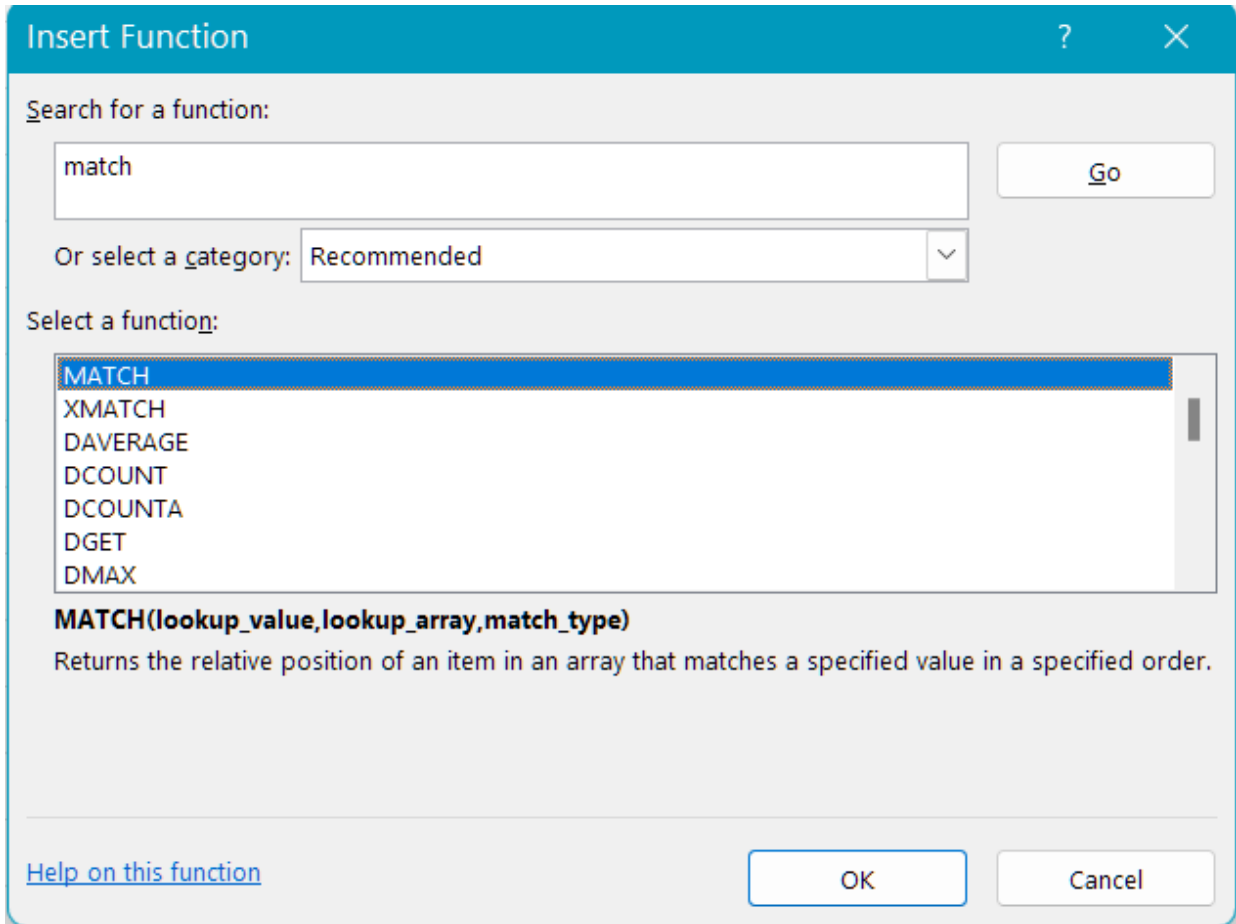
The "fx" icon opens the "Insert Function" dialog box

- Select the function:
 - Either by selecting "MATCH" in the "Lookup & Reference" category:



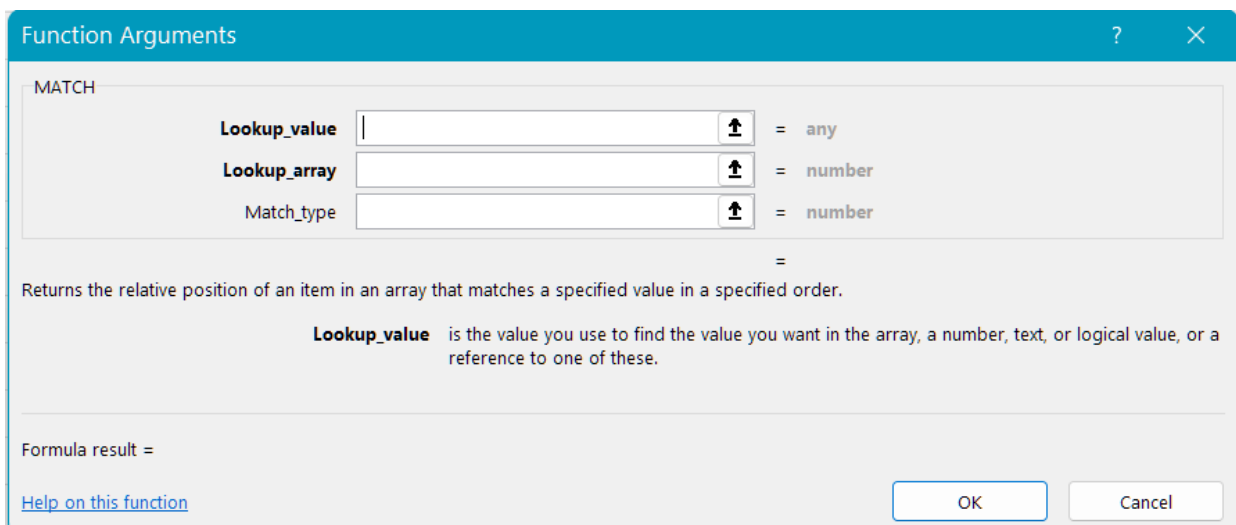
The MATCH() function via the Lookup & Reference category

- Or by typing "match" into the search field:




The MATCH() function via the search field

- Click OK.
- The "Function Arguments" dialog box opens up:



The MATCH() "Function Arguments" dialog box opens

- In the first argument, enter the lookup value "White."

Lookup_value  = "White"

Enter the value "White"

- Click the button to the right of this second argument, and select the column in which you want to look up this data, i.e., E3:E8.

Lookup_array  = {"Color";"Blue";"Green";"Red";"White";"Green"}

Select the column in which to look up the value

- In the third argument, enter "0" to carry out an exact lookup.

Match_type  = 0

Enter "0"

- Click OK. Excel has found the position!

	A	B	C	D	E	F	G
1	Function: MATCH()						
2							
3		Position of the value "White"	Item	Color	Sales		
4		5	Pants	Blue	6,210		
5			Dress	Green	8,843		
6			Sweater	Red	2,201		
7			Dress	White	7,616		
8			Skirt	Green	5,136		

Excel has found the position of the value "White" in the Color column!

Ta-da! Now you know how to use the fx wizard to set up this function! 😊