

## Monthly Report: Surveillance Project SB4008 IFNg (TC0651 and TC0751) & Antibody (TC0077) tests for bovine tuberculosis

---

- **“Samples”** refers to an individual tube of blood taken from an individual animal which is subsequently submitted for testing. It is generally assumed that the number of samples and the number of animals are analogous as any duplicate sample blood tube from the same animal will not be tested. However, minor discrepancies may occur where the same animal is tested more than once due to a request for a resample or the animal is tested twice under different categories (for example, as a PAR-RAPID and then as part of a PAR-HERD-S).
- **“Submissions”** refers to an individual batch or set of samples received for testing. Submissions may comprise 1 or more samples (for example, if an entire herd is being tested it is usually sent as 1 submission). It is generally assumed that the number of submissions and the number of herds are analogous.
- **Retests** are samples where the first ELISA assay fails and the same sample is retested on a new ELISA plate. Each sample can be retested only once. A retest is not a reportable test outcome.
- **Resamples** are where a sample has been retested and failed a second time, so that the lab requests a new sample. This is a reportable test outcome.
- **Rejects** are samples that are not tested by the lab for one of the following reasons: blood collected into wrong type of vacutainer, samples that have not been maintained at the appropriate temperature range ( $22\pm 5^{\circ}\text{C}$ ), unlabelled samples, broken or cracked tubes, blood that is extensively clotted (small clots are OK), samples received after 4pm on the day after sample collection. Such samples are reported separately in the tables and in figure 5.
- **POS (pokeweed mitogen)** is a sample positive control reagent which provides a measure of the quality/viability of the blood sample. A POS fail ( $< 0.45$  optical density reading) may indicate compromised blood quality as a result of collection/transportation conditions or due the animal having an unusually low/suppressed cellular immune response.
- **NEG (no-antigen control)** is a sample negative control which provides a measure of the background antigen-independent IFN- $\gamma$  responses. A NEG fail ( $> 0.3$  optical density reading) may indicate a laboratory procedures problem (normally resolved during re-test) or that an animal has unusually high background levels of IFN-g.

# Monthly Report: Surveillance Project SB4008 IFNg (TC0651 and TC0751) & Antibody (TC0077) tests for bovine tuberculosis

Test Criteria	Submission Reason	Explanation	Mandatory?
1. Interferon-gamma test:	Anomalous reaction (SER-ANOM)	Modified serial IFNG blood test of suspected fraudulent reactors to the skin test (animals with abnormal skin swellings), in confirmed or unconfirmed TB incidents.	NO (APHA discretion to firm up or rule out any suspicion of fraud and support any investigations)
1. Interferon-gamma test:	'NSR' Herds (SER-NSR)	Modified serial IFNG blood testing of individual skin test reactors and/or IRs in unconfirmed TB breakdown herds to clarify their infection status where there is evidence of non-specific sensitisation to bovine tuberculin (the “non-specific reactor” procedure)	NO (APHA discretion)
1. Interferon-gamma test:	Parallel - Low Incidence (PAR-LOW-IN) N.B. PAR-NEW-IN from 1st April 2017	Parallel blood IFNG testing to maximise the probability of removing all infected cattle in a new herd breakdown as soon as possible after confirmation of TB.	YES in Area of Low Incidence
1. Interferon-gamma test:	PAR-CHR	Parallel IFNG blood testing of Chronic breakdown herds i.e. where VL reactors are disclosed at a 3rd or subsequent Short Interval test or a SLH case after a 2nd or subsequent Short Interval test	England only - YES
1. Interferon-gamma test:	PAR-CUL-N	Parallel IFNG blood testing to maximise the probability of removing all infected cattle in a new breakdown as soon as possible after confirmation of TB where herd is situated in badger control areas of England that have completed at least 2 effective culls.	YES (in eligible badger control areas of England)
1. Interferon-gamma test:	PAR-CUL-P	Parallel IFNG blood testing to maximise the probability of removing all infected cattle in a persistent confirmed breakdown where herd is situated within badger control areas of England that have completed at least 2 effective culls	NO (APHA discretion in badger control areas England)
1. Interferon-gamma test:	PAR-IR-EX	Parallel IFNG blood testing of all severe IRs in the Exit Strategy for persistent herds (coupled with Idexx antibody testing), and also for new breakdown herds in ITBAN (Intermediate TB Area North) (not coupled with IDEXX testing).	YES (Wales only)
1. Interferon-gamma test:	PAR-IR-SEV	Parallel blood testing of all severe IRs identified in persistent breakdown herds only (coupled with Idexx antibody testing)	YES (Wales only)
1. Interferon-gamma test:	PAR-OTHER	Other parallel IFNG blood testing not covered in any of the other scenarios	NO (APHA discretion)
1. Interferon-gamma test:	PAR-POSTM	Post movement IFNG blood test of cattle (coupled with Idexx antibody testing)	Yes (currently Wales ITBAN only)
1. Interferon-gamma test:	PAR-RAPID	Parallel blood testing of two-times IRs identified under the severe interpretation of the skin test used in Wales.	YES (Wales only)
1. Interferon-gamma test:	PAR-RECUR	England - parallel IFNG blood testing of skin test-negative cattle in breakdown herds (in HRA & 6-monthly-testing parts of Edge Area) occurring within 18 months of lifting restrictions after a previous breakdown. Wales - parallel IFNG blood testing of skin test-negative cattle in breakdown herds occurring within 6 months of lifting restrictions after a previous breakdown	England - YES / Wales - NO (APHA discretion)
1. Interferon-gamma test:	Persistent TB breakdowns (OTF status withdrawn) (PAR-P-CONF) N.B. PAR-PERSIS from 1st April 2017	Parallel blood IFNG testing of skin test-negative cattle in persistently infected herds that have failed to resolve by repeated short-interval skin testing and fulfill a minimum of biosecurity standards.	NO (APHA discretion)
1. Interferon-gamma test:	Possible Herd Slaughter (PAR-HERD-S)	Parallel interferon-gamma (IFNG) blood testing of skin test negative cattle to inform whole or partial herd slaughters decisions	YES, if APHA are contemplating a herd slaughter
1. Interferon-gamma test:	SER-FLEXI	Extended IFNG blood test to provide flexible test readout in a confirmed M. bovis-infected herd where Johne's (M. a. paratuberculosis) infection or vaccination is suspected to be interfering with M. bovis infection detection	NO (APHA discretion)
1. Interferon-gamma test:	Serial Other (SER-OTHER)	Serial test – other reasons	NO (APHA discretion)
1. Interferon-gamma test:	Suspected Fraud (SER-FRAUD)	Modified serial IFNG blood test of suspected fraudulent reactors to the skin test (animals with abnormal skin swellings), in confirmed or unconfirmed TB incidents.	NO (APHA discretion to firm up or rule out any suspicion of fraud and support any investigations)
2. IDEXX antibody test:	BOV-IR-C	Compulsory antibody testing of severe IRs (coupled IFNG testing)	YES (Wales only)
2. IDEXX antibody test:	BOV-IR-EX	Compulsory antibody testing of IRs as part of Exit Strategy (coupled with IFNG testing)	YES (Wales only)
2. IDEXX antibody test:	BOV-OTHER	Antibody testing for reasons not covered by the above	NO (APHA discretion - Eng & Wales)
2. IDEXX antibody test:	BOV-P	Supplementary antibody testing within persistent infected herds	NO (APHA discretion - Eng & Wales)
2. IDEXX antibody test:	BOV-POSTM	Compulsory post-movement antibody test of cattle (coupled with IFNG testing)	YES (Wales only)

# Table 1. Monthly Totals for February 2025

## Monthly Totals for February 2025

Country	Number of Samples	% Samples	243 Submissions
England	11678	71.36%	
Wales	4686	28.64%	
<b>Total</b>	<b>16364</b>	<b>100.00%</b>	

Submissions	Number of Samples	% Samples
<input type="checkbox"/> <b>Parallel</b>	<b>15999</b>	<b>97.77%</b>
PAR-CHR	245	1.50%
PAR-CUL-P	228	1.39%
PAR-HERD-S	18	0.11%
PAR-IR-EX	23	0.14%
PAR-IR-SEV	272	1.66%
PAR-NEW-IN	5666	34.62%
PAR-OTHER	1810	11.06%
PAR-PERSIS	2093	12.79%
PAR-RAPID	54	0.33%
PAR-RECUR	5590	34.16%
<input type="checkbox"/> <b>Serial / Extended</b>	<b>365</b>	<b>2.23%</b>
SER-FLEXI	354	2.16%
SER-NSR	11	0.07%
<b>Total</b>	<b>16364</b>	<b>100.00%</b>

Country	Number of Samples	Retests	Total (% of all Samples)
England	11678	754	6.46%
Wales	4686	363	7.75%
<b>Total</b>	<b>16364</b>	<b>1117</b>	<b>6.83%</b>

Country	Number of Samples	Resamples	Total (% of all Samples)
England	11678	662	5.67%
Wales	4686	291	6.21%
<b>Total</b>	<b>16364</b>	<b>953</b>	<b>5.82%</b>

Country	Number of Samples	Rejects	Total (% of all Samples)
England	11678	85	0.73%
Wales	4686	22	0.47%
<b>Total</b>	<b>16364</b>	<b>107</b>	<b>0.65%</b>

## Year to Date Totals

Country	Number of Samples	% Samples	494 Submissions
England	26818	68.36%	
Scotland	686	1.75%	
<b>Total</b>	<b>39232</b>	<b>100.00%</b>	

Submissions	Number of Samples	% Samples
<input type="checkbox"/> <b>Parallel</b>	<b>38297</b>	<b>97.62%</b>
PAR-CHR	1461	3.72%
PAR-CUL-N	2	0.01%
PAR-CUL-P	653	1.66%
PAR-HERD-S	18	0.05%
PAR-IR-EX	66	0.17%
PAR-IR-SEV	606	1.54%
PAR-NEW-IN	11462	29.22%
PAR-OTHER	2819	7.19%
PAR-PERSIS	5971	15.22%
PAR-RAPID	126	0.32%
PAR-RECUR	15113	38.52%
<input type="checkbox"/> <b>Serial / Extended</b>	<b>935</b>	<b>2.38%</b>
SER-FLEXI	924	2.36%
SER-NSR	11	0.03%
<b>Total</b>	<b>39232</b>	<b>100.00%</b>

Country	Number of Samples	Retests	Total (% of all Samples)
England	26818	1772	6.61%
Scotland	686	38	5.54%
Wales	11728	697	5.94%
<b>Total</b>	<b>39232</b>	<b>2507</b>	<b>6.39%</b>

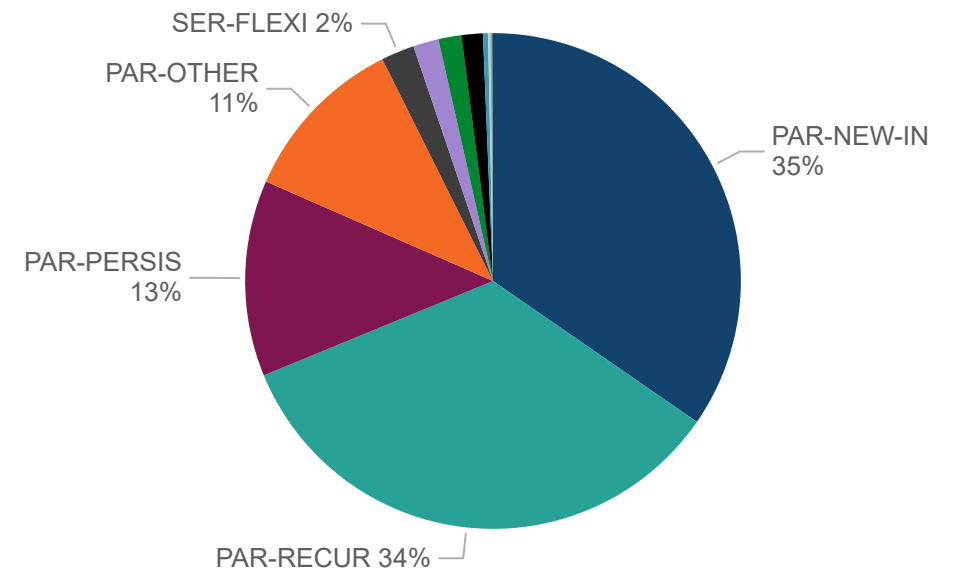
Country	Number of Samples	Resamples	Total (% of all Samples)
England	26818	1546	5.76%
Scotland	686	24	3.50%
Wales	11728	567	4.83%
<b>Total</b>	<b>39232</b>	<b>2137</b>	<b>5.45%</b>

Country	Number of Samples	Rejects	Total (% of all Samples)
England	26818	173	0.65%
Scotland	686		
Wales	11728	86	0.73%
<b>Total</b>	<b>39232</b>	<b>259</b>	<b>0.66%</b>

# Figure 1. Number of samples submitted in each category February 2025

Submission Reason	Number of Samples	% Samples
PAR-CHR	245	1.50%
PAR-CUL-P	228	1.39%
PAR-HERD-S	18	0.11%
PAR-IR-EX	23	0.14%
PAR-IR-SEV	272	1.66%
PAR-NEW-IN	5666	34.62%
PAR-OTHER	1810	11.06%
PAR-PERSIS	2093	12.79%
PAR-RAPID	54	0.33%
PAR-RECUR	5590	34.16%
SER-FLEXI	354	2.16%
SER-NSR	11	0.07%
<b>Total</b>	<b>16364</b>	<b>100.00%</b>

No Samples by Submission Reason



PAR-HERD-S: potential herd slaughter, PAR-P-CONF (PAR-PERSIS from 1 April 2017): persistent TB breakdown OTFW, PAR-LOW-IN (PAR-NEW-IN from 1 April 2017): parallel low incidence, PAR-RAPID: rapid testing of twice IRs, PAR-CUL-N: new infection in cull area, PAR-CUL-P: persistent infection in cull area, PAR-OTHER: parallel other, SER-FLEXI: flexible extended test in confirmed herds with concurrent Johne's infection/vaccination, SER-NSR: serial non-specific reactor, SER-FRAUD: serial potential fraud, SER-OTHER: serial other, PAR-CHR: chronic

Figure 2. Number of samples submitted in each category by County in February 2025

PAR-HERD-S: potential herd slaughter, PAR-P-CONF (PAR-PERSIS from 1 April 2017): persistent TB breakdown OTFW, PAR-LOW-IN (PAR-NEW-IN from 1 April 2017): parallel low incidence, PAR-RAPID: rapid testing of twice IRs, PAR-CUL-N: new infection in cull area, PAR-CUL-P: persistent infection in cull area, PAR-OTHER: parallel other, SER-FLEXI: flexible extended test in confirmed herds with concurrent Johne's infection/vaccination, SER-NSR: serial non-specific reactor, SER-FRAUD: serial potential fraud, SER-OTHER: serial other, PAR-CHR: chronic

Number of Samples by Country from CPH, County and Reason

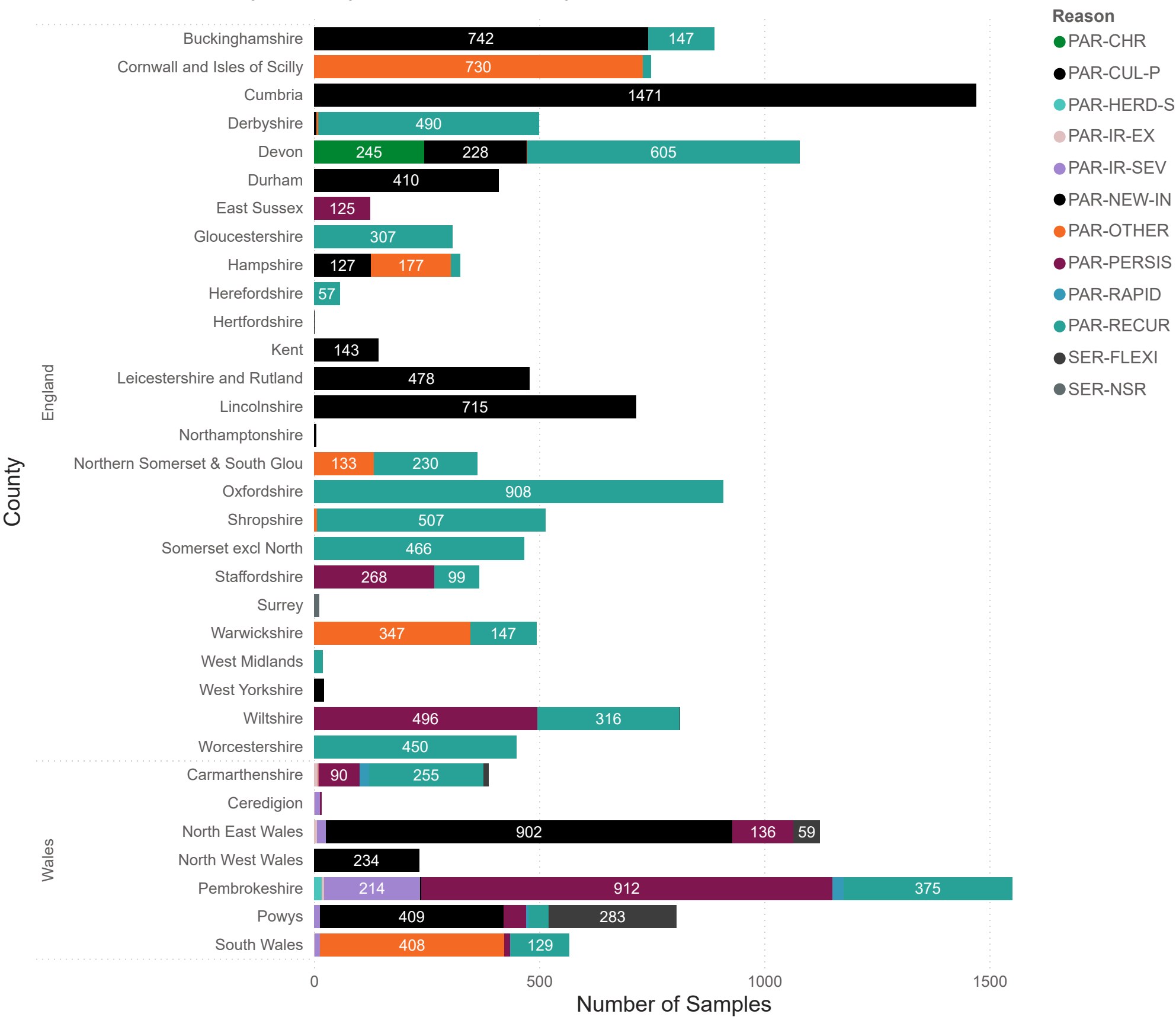


Figure 3. Number of samples submitted in each category by County this year

PAR-HERD-S: potential herd slaughter, PAR-P-CONF (PAR-PERSIS from 1 April 2017): persistent TB breakdown OTFW, PAR-LOW-IN (PAR-NEW-IN from 1 April 2017): parallel low incidence, PAR-RAPID: rapid testing of twice IRs, PAR-CUL-N: new infection in cull area, PAR-CUL-P: persistent infection in cull area, PAR-OTHER: parallel other, SER-FLEXI: flexible extended test in confirmed herds with concurrent Johne's infection/vaccination, SER-NSR: serial non-specific reactor, SER-FRAUD: serial potential fraud, SER-OTHER: serial other, PAR-CHR: chronic

Number of Samples by Country from CPH, County and Reason

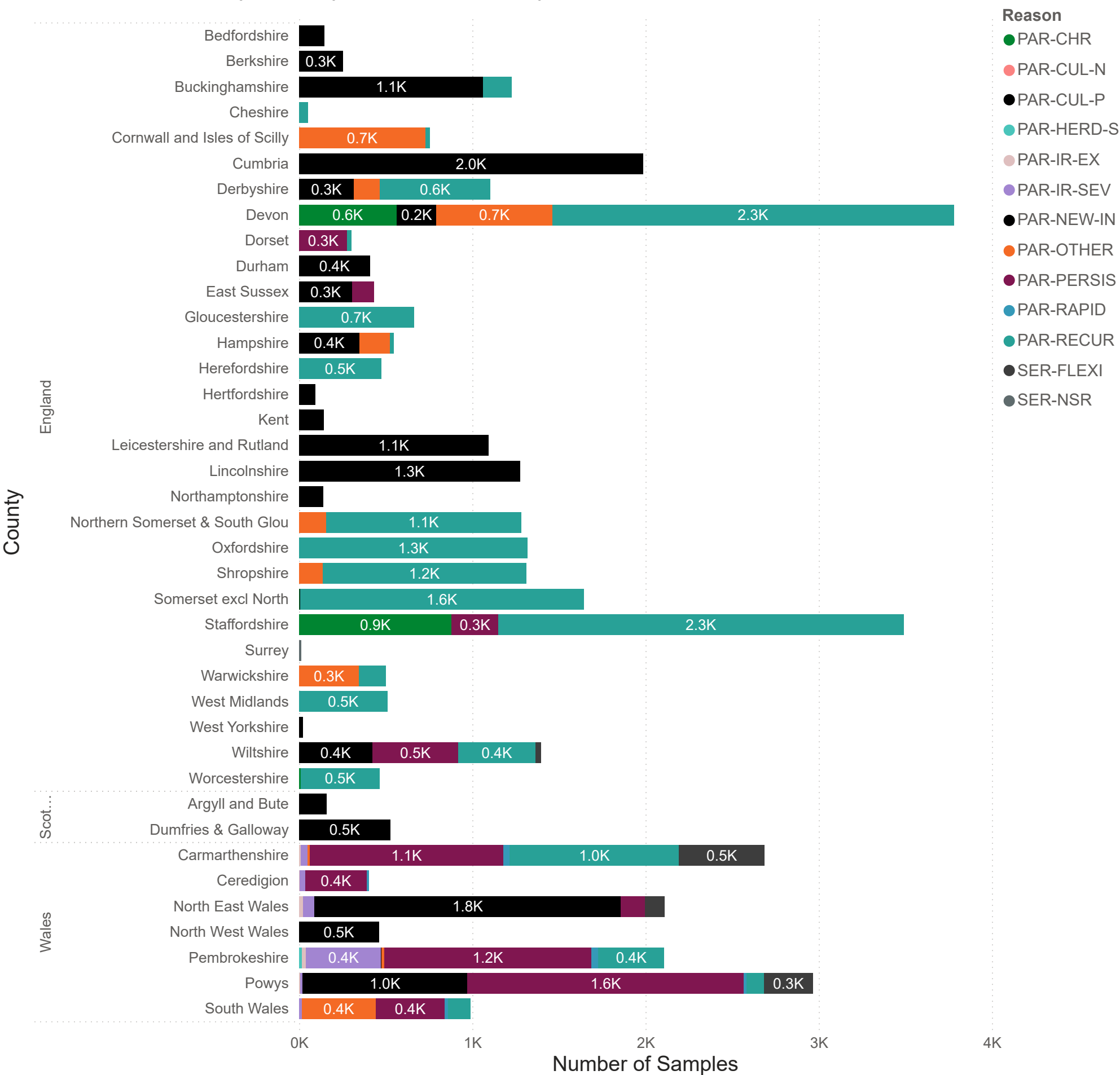




Table 2a. Summary by County February 2025

Country	No Subs	Samples	% of Total	Gamma Positive	% Positive	Gamma Negative	% Negative	Retest	% Retest	Resample	% Resample	Rejected	% Rejected
🇬🇧 England	117	11678	71.36%	621	5.32%	10310	88.29%	754	6.46%	662	5.67%	85	0.73%
🇬🇧 England - Edge	38	3722	22.75%	161	4.33%	3304	88.77%	224	6.02%	195	5.24%	62	1.67%
🇬🇧 Buckinghamshire	10	889	5.43%	37	4.16%	734	82.56%	70	7.87%	61	6.86%	57	6.41%
PAR-NEW-IN	8	742	4.53%	26	3.50%	612	82.48%	50	6.74%	47	6.33%	57	7.68%
PAR-RECUR	2	147	0.90%	11	7.48%	122	82.99%	20	13.61%	14	9.52%		
🇬🇧 Derbyshire	5	500	3.06%	12	2.40%	468	93.60%	20	4.00%	19	3.80%	1	0.20%
PAR-NEW-IN	1	5	0.03%			3	60.00%	2	40.00%	2	40.00%		
PAR-OTHER	1	5	0.03%			4	80.00%	1	20.00%	1	20.00%		
PAR-RECUR	3	490	2.99%	12	2.45%	461	94.08%	17	3.47%	16	3.27%	1	0.20%
🇬🇧 East Sussex	1	125	0.76%	2	1.60%	121	96.80%	4	3.20%	2	1.60%		
PAR-PERSIS	1	125	0.76%	2	1.60%	121	96.80%	4	3.20%	2	1.60%		
🇬🇧 Hampshire	5	324	1.98%	8	2.47%	298	91.98%	17	5.25%	14	4.32%	4	1.23%
PAR-NEW-IN	2	127	0.78%	5	3.94%	115	90.55%	9	7.09%	7	5.51%		
PAR-OTHER	1	177	1.08%	3	1.69%	167	94.35%	7	3.95%	7	3.95%		
PAR-RECUR	2	20	0.12%			16	80.00%	1	5.00%			4	20.00%
🇬🇧 Leicestershire and Rutland	7	478	2.92%	19	3.97%	436	91.21%	24	5.02%	23	4.81%		
PAR-NEW-IN	7	478	2.92%	19	3.97%	436	91.21%	24	5.02%	23	4.81%		
🇬🇧 Northamptonshire	1	4	0.02%			3	75.00%	1	25.00%	1	25.00%		
PAR-NEW-IN	1	4	0.02%			3	75.00%	1	25.00%	1	25.00%		
🇬🇧 Oxfordshire	6	908	5.55%	51	5.62%	818	90.09%	46	5.07%	39	4.30%		
PAR-RECUR	6	908	5.55%	51	5.62%	818	90.09%	46	5.07%	39	4.30%		
🇬🇧 Warwickshire	3	494	3.02%	32	6.48%	426	86.23%	42	8.50%	36	7.29%		
PAR-OTHER	2	347	2.12%	28	8.07%	296	85.30%	29	8.36%	23	6.63%		
PAR-RECUR	1	147	0.90%	4	2.72%	130	88.44%	13	8.84%	13	8.84%		
🇬🇧 England - HRA	60	5183	31.67%	366	7.06%	4461	86.07%	380	7.33%	340	6.56%	16	0.31%
🇬🇧 Cornwall and Isles of Scilly	4	748	4.57%	68	9.09%	649	86.76%	38	5.08%	31	4.14%		
PAR-OTHER	3	730	4.46%	68	9.32%	631	86.44%	38	5.21%	31	4.25%		
PAR-RECUR	1	18	0.11%			18	100.00%						
🇬🇧 Devon	16	1079	6.59%	91	8.43%	920	85.26%	67	6.21%	55	5.10%	13	1.20%
PAR-CHR	1	245	1.50%	12	4.90%	215	87.76%	6	2.45%	5	2.04%	13	5.31%
PAR-CUL-P	2	228	1.39%	15	6.58%	203	89.04%	15	6.58%	10	4.39%		
PAR-OTHER	1	1	0.01%			1	100.00%						
PAR-RECUR	12	605	3.70%	64	10.58%	501	82.81%	46	7.60%	40	6.61%		
🇬🇧 Gloucestershire	2	307	1.88%	6	1.95%	259	84.36%	43	14.01%	42	13.68%		
PAR-RECUR	2	307	1.88%	6	1.95%	259	84.36%	43	14.01%	42	13.68%		
🇬🇧 Herefordshire	5	57	0.35%	3	5.26%	37	64.91%	18	31.58%	17	29.82%		
PAR-RECUR	5	57	0.35%	3	5.26%	37	64.91%	18	31.58%	17	29.82%		
🇬🇧 Northern Somerset & South Glou	5	363	2.22%	40	11.02%	308	84.85%	19	5.23%	15	4.13%		
PAR-OTHER	2	133	0.81%	7	5.26%	121	90.98%	6	4.51%	5	3.76%		
PAR-RECUR	3	230	1.41%	33	14.35%	187	81.30%	13	5.65%	10	4.35%		
🇬🇧 Shropshire	5	514	3.14%	23	4.47%	448	87.16%	46	8.95%	43	8.37%		
PAR-OTHER	1	7	0.04%			5	71.43%	2	28.57%	2	28.57%		
PAR-RECUR	4	507	3.10%	23	4.54%	443	87.38%	44	8.68%	41	8.09%		
🇬🇧 Somerset excl	8	466	2.85%	44	9.44%	382	81.97%	41	8.80%	39	8.37%	1	0.21%
PAR-RECUR	8	466	2.85%	44	9.44%	382	81.97%	41	8.80%	39	8.37%	1	0.21%
🇬🇧 Staffordshire	5	367	2.24%	6	1.63%	326	88.83%	35	9.54%	33	8.99%	2	0.54%
PAR-PERSIS	1	268	1.64%	1	0.37%	251	93.66%	16	5.97%	14	5.22%	2	0.75%
PAR-RECUR	4	99	0.60%	5	5.05%	75	75.76%	19	19.19%	19	19.19%		
🇬🇧 West Midlands	2	19	0.12%	1	5.26%	11	57.89%	7	36.84%	7	36.84%		
PAR-RECUR	2	19	0.12%	1	5.26%	11	57.89%	7	36.84%	7	36.84%		
🇬🇧 Wiltshire	6	813	4.97%	57	7.01%	710	87.33%	49	6.03%	46	5.66%		
PAR-PERSIS	3	496	3.03%	35	7.06%	428	86.29%	36	7.26%	33	6.65%		
PAR-RECUR	2	316	1.93%	22	6.96%	281	88.92%	13	4.11%	13	4.11%		
SER-FLEXI	1	1	0.01%			1	100.00%						
🇬🇧 Worcestershire	2	450	2.75%	27	6.00%	411	91.33%	17	3.78%	12	2.67%		
PAR-RECUR	2	450	2.75%	27	6.00%	411	91.33%	17	3.78%	12	2.67%		
🇬🇧 England - LRA	19	2773	16.95%	94	3.39%	2545	91.78%	150	5.41%	127	4.58%	7	0.25%
🇬🇧 Cumbria	7	1471	8.99%	53	3.60%	1340	91.09%	78	5.30%	71	4.83%	7	0.48%
PAR-NEW-IN	7	1471	8.99%	53	3.60%	1340	91.09%	78	5.30%	71	4.83%	7	0.48%
🇬🇧 Durham	3	410	2.51%	7	1.71%	379	92.44%	26	6.34%	24	5.85%		
PAR-NEW-IN	3	410	2.51%	7	1.71%	379	92.44%	26	6.34%	24	5.85%		
🇬🇧 Hertfordshire	1	1	0.01%			1	100.00%						
PAR-NEW-IN	1	1	0.01%			1	100.00%						
🇬🇧 Kent	1	143	0.87%	11	7.69%	125	87.41%	7	4.90%	7	4.90%		
PAR-NEW-IN	1	143	0.87%	11	7.69%	125	87.41%	7	4.90%	7	4.90%		
🇬🇧 Lincolnshire	5	715	4.37%	23	3.22%	670	93.71%	35	4.90%	22	3.08%		
PAR-NEW-IN	5	715	4.37%	23	3.22%	670	93.71%	35	4.90%	22	3.08%		
🇬🇧 Surrey	1	11	0.07%			11	100.00%						
SER-NSR	1	11	0.07%			11	100.00%						
🇬🇧 West Yorkshire	1	22	0.13%			19	86.36%	4	18.18%	3	13.64%		
PAR-NEW-IN	1	22	0.13%			19	86.36%	4	18.18%	3	13.64%		
🇬🇧 Wales	126	4686	28.64%	557	11.89%	3816	81.43%	363	7.75%	291	6.21%	22	0.47%
🇬🇧 Wales - High TB	86	2624	16.04%	411	15.66%	2033	77.48%	207	7.89%	174	6.63%	6	0.23%
🇬🇧 Carmarthenshire	21	388	2.37%	63	16.24%	299	77.06%	30	7.73%	25	6.44%	1	0.26%
PAR-IR-EX	1	8	0.05%	3	37.50%	5	62.50%						
PAR-IR-SEV	1	1	0.01%			1	100.00%						
PAR-OTHER	1	2	0.01%			1	50.00%	1	50.00%	1	50.00%		
PAR-PERSIS	2	90	0.55%	26	28.89%	57	63.33%	9	10.00%	7	7.78%		
PAR-RAPID	9	21	0.13%	11	52.38%	9	42.86%	1	4.76%	1	4.76%		
PAR-RECUR	3	255	1.56%	22	8.63%	219	85.88%	17	6.67%	14	5.49%		
SER-FLEXI	4	11	0.07%	1	9.09%	7	63.64%	2	18.18%	2	18.18%	1	9.09%
🇬🇧 Ceredigion	5	17	0.10%	4	23.53%	12	70.59%	2	11.76%	1	5.88%		
PAR-IR-EX	1	2	0.01%	1	50.00%	1	50.00%						
PAR-IR-SEV	3	12	0.07%	3	25.00%	8	66.67%	2	16.67%	1	8.33%		
PAR-PERSIS	1	3	0.02%			3	100.00%						
🇬🇧 Pembrokeshire	42	1551	9.48%	249	16.05%	1211	78.08%	105	6.77%	90	5.80%	1	0.06%
PAR-HERD-S	1	18	0.11%	1	5.56%	15	83.33%	3	16.67%	2	11.11%		
PAR-IR-EX	1	4	0.02%	3	75.00%			1	25.00%	1	25.00%		
PAR-IR-SEV	19	214	1.31%	105	49.07%	100	46.73%	9	4.21%	8	3.74%	1	0.47%
PAR-NEW-IN	1	3	0.02%			3	100.00%	1	33.33%				
PAR-PERSIS	9	912	5.57%	92	10.09%	771	84.54%	54	5.92%	49	5.37%		
PAR-RAPID	8	25	0.15%	5	20.00%	19	76.00%	1	4.00%	1	4.00%		
PAR-RECUR	3	375	2.29%	43	11.47%	303	80.80%	36	9.60%	29	7.73%		
🇬🇧 Powys	8	103	0.63%	10	9.71%	83	80.58%	13	12.62%	10	9.71%		
PAR-IR-EX	1	1	0.01%			1	100.00%						
PAR-IR-SEV	2	8	0.05%	1	12.50%	5	62.50%	2	25.00%	2	25.00%		
PAR-PERSIS	2	49	0.30%	5	10.20%	37	75.51%	9	18.37%	7	14.29%		
PAR-RAPID	1	3	0.02%	1	33.33%	2	66.67%						
PAR-RECUR	2	42	0.26%	3	7.14%	38	90.48%	2	4.76%	1	2.38%		
🇬🇧 South Wales	10	565	3.45%	85	15.04%	428	75.75%	57	10.09%	48	8.50%	4	0.71%
PAR-IR-EX	1	2	0.01%	1	50.00%	1	50.00%						
PAR-IR-SEV	3	12	0.07%	5	41.67%	7	58.33%						
PAR-OTHER	3	408	2.49%	60	14.71%	317	77.70%	37	9.07%	29	7.11%	2	0.49%
PAR-PERSIS	1	14	0.09%	2	14.29%	11	78.57%	2	14.29%	1	7.14%		
PAR-RECUR	2	129	0.79%	17	13.18%	92	71.32%	18	13.95%	18	13.95%	2	1.55%
🇬🇧 Wales - Intermediate TB	30	1723	10.53%	122	7.08%	1503	87.23%	130	7.54%	93	5.40%	5	0.29%
🇬🇧 North East Wales	18	1019	6.23%	71	6.97%	897	88.03%	72	7.07%	49	4.81%	2	0.20%
PAR-IR-EX	2	6	0.04%	1	16.67%	3	50.00%	2	33.33%	2	33.33%		
PAR-IR-SEV	3	15	0.09%	4	26.67%	9	60.00%	2	13.33%	2	13.33%		
PAR-NEW-IN	11	862	5.27%	55	6.38%	765	88.75%	60	6.96%	40	4.64%	2	0.23%
PAR-PERSIS	2	136	0.83%	11	8.09%	120	88.24%	8	5.88%	5	3.68%		
🇬🇧 Powys	10												



Table 2b. Summary by County YTD

Country	No Subs	Samples	% of Total	Gamma Positive	% Positive	Gamma Negative	% Negative	Retest	% Retest	Resample	% Resample	Rejected	% Rejected
<div><div></div>England</div>	228	26818	68.36%	1444	5.38%	23655	88.21%	1772	6.61%	1546	5.76%	173	0.65%
<div><div></div>England - Edge</div>	72	6666	16.99%	294	4.41%	5936	89.05%	422	6.33%	368	5.52%	68	1.02%
<div><div></div>Berkshire</div>	3	252	0.64%	6	2.38%	224	88.89%	22	8.73%	22	8.73%		
<div><div></div>PAR-NEW-IN</div>	3	252	0.64%	6	2.38%	224	88.89%	22	8.73%	22	8.73%		
<div><div></div>Buckinghamshire</div>	14	1227	3.13%	68	5.54%	1009	82.23%	105	8.56%	93	7.58%	57	4.65%
<div><div></div>PAR-NEW-IN</div>	11	1063	2.71%	57	5.36%	880	82.78%	75	7.06%	69	6.49%	57	5.36%
<div><div></div>PAR-RECUR</div>	3	164	0.42%	11	6.71%	129	78.66%	30	18.29%	24	14.63%		
<div><div></div>Cheshire</div>	2	50	0.13%	1	2.00%	45	90.00%	4	8.00%	4	8.00%		
<div><div></div>PAR-RECUR</div>	2	50	0.13%	1	2.00%	45	90.00%	4	8.00%	4	8.00%		
<div><div></div>Derbyshire</div>	16	1104	2.81%	34	3.08%	1013	91.76%	67	6.07%	55	4.98%	2	0.18%
<div><div></div>PAR-NEW-IN</div>	8	317	0.81%	8	2.52%	287	90.54%	26	8.20%	21	6.62%	1	0.32%
<div><div></div>PAR-OTHER</div>	3	151	0.38%	11	7.28%	134	88.74%	8	5.30%	6	3.97%		
<div><div></div>PAR-RECUR</div>	5	636	1.62%	15	2.36%	592	93.08%	33	5.19%	28	4.40%	1	0.16%
<div><div></div>East Sussex</div>	3	433	1.10%	13	3.00%	414	95.61%	10	2.31%	6	1.39%		
<div><div></div>PAR-NEW-IN</div>	2	308	0.79%	11	3.57%	293	95.13%	6	1.95%	4	1.30%		
<div><div></div>PAR-PERSIS</div>	1	125	0.32%	2	1.60%	121	96.80%	4	3.20%	2	1.60%		
<div><div></div>Hampshire</div>	7	547	1.39%	17	3.11%	486	88.85%	46	8.41%	40	7.31%	4	0.73%
<div><div></div>PAR-NEW-IN</div>	4	350	0.89%	14	4.00%	303	86.57%	38	10.86%	33	9.43%		
<div><div></div>PAR-OTHER</div>	1	177	0.45%	3	1.69%	167	94.35%	7	3.95%	7	3.95%		
<div><div></div>PAR-RECUR</div>	2	20	0.05%			16	80.00%	1	5.00%			4	20.00%
<div><div></div>Leicestershire and Rutland</div>	13	1093	2.79%	48	4.39%	994	90.94%	50	4.57%	47	4.30%	4	0.37%
<div><div></div>PAR-NEW-IN</div>	13	1093	2.79%	48	4.39%	994	90.94%	50	4.57%	47	4.30%	4	0.37%
<div><div></div>Northamptonshire</div>	2	138	0.35%	3	2.17%	130	94.20%	6	4.35%	5	3.62%		
<div><div></div>PAR-NEW-IN</div>	2	138	0.35%	3	2.17%	130	94.20%	6	4.35%	5	3.62%		
<div><div></div>Oxfordshire</div>	7	1319	3.36%	70	5.31%	1188	90.07%	70	5.31%	60	4.55%	1	0.08%
<div><div></div>PAR-RECUR</div>	7	1319	3.36%	70	5.31%	1188	90.07%	70	5.31%	60	4.55%	1	0.08%
<div><div></div>Warwickshire</div>	5	503	1.28%	34	6.76%	433	86.08%	42	8.35%	36	7.16%		
<div><div></div>PAR-OTHER</div>	2	347	0.88%	28	8.07%	296	85.30%	29	8.36%	23	6.63%		
<div><div></div>PAR-RECUR</div>	3	156	0.40%	6	3.85%	137	87.82%	13	8.33%	13	8.33%		
<div><div></div>England - HRA</div>	125	16067	40.95%	1011	6.29%	13993	87.09%	1122	6.98%	981	6.11%	82	0.51%
<div><div></div>Cornwall and Isles of Scilly</div>	5	753	1.92%	68	9.03%	654	86.85%	43	5.71%	31	4.12%		
<div><div></div>PAR-OTHER</div>	3	730	1.86%	68	9.32%	631	86.44%	38	5.21%	31	4.25%		
<div><div></div>PAR-RECUR</div>	2	23	0.06%			23	100.00%	5	21.74%				
<div><div></div>Devon</div>	31	3780	9.63%	325	8.60%	3265	86.38%	194	5.13%	171	4.52%	19	0.50%
<div><div></div>PAR-CHR</div>	3	563	1.44%	37	6.57%	502	89.17%	13	2.31%	11	1.95%	13	2.31%
<div><div></div>PAR-CUL-N</div>	1	2	0.01%			2	100.00%						
<div><div></div>PAR-CUL-P</div>	2	228	0.58%	15	6.58%	203	89.04%	15	6.58%	10	4.39%		
<div><div></div>PAR-OTHER</div>	5	669	1.71%	86	12.86%	560	83.71%	24	3.59%	22	3.29%	1	0.15%
<div><div></div>PAR-RECUR</div>	20	2318	5.91%	187	8.07%	1998	86.19%	142	6.13%	128	5.52%	5	0.22%
<div><div></div>Dorset</div>	2	302	0.77%	37	12.25%	231	76.49%	37	12.25%	34	11.26%		
<div><div></div>PAR-PERSIS</div>	1	279	0.71%	35	12.54%	221	79.21%	26	9.32%	23	8.24%		
<div><div></div>PAR-RECUR</div>	1	23	0.06%	2	8.70%	10	43.48%	11	47.83%	11	47.83%		
<div><div></div>Gloucestershire</div>	4	662	1.69%	33	4.98%	568	85.80%	66	9.97%	61	9.21%		
<div><div></div>PAR-RECUR</div>	4	662	1.69%	33	4.98%	568	85.80%	66	9.97%	61	9.21%		
<div><div></div>Herefordshire</div>	8	475	1.21%	17	3.58%	401	84.42%	61	12.84%	56	11.79%	1	0.21%
<div><div></div>PAR-RECUR</div>	8	475	1.21%	17	3.58%	401	84.42%	61	12.84%	56	11.79%	1	0.21%
<div><div></div>Northern Somerset &amp; South Glou</div>	10	1281	3.27%	99	7.73%	1128	88.06%	73	5.70%	54	4.22%		
<div><div></div>PAR-OTHER</div>	3	156	0.40%	8	5.13%	139	89.10%	10	6.41%	9	5.77%		
<div><div></div>PAR-RECUR</div>	7	1125	2.87%	91	8.09%	989	87.91%	63	5.60%	45	4.00%		
<div><div></div>Shropshire</div>	12	1310	3.34%	83	6.34%	1105	84.35%	130	9.92%	121	9.24%	1	0.08%
<div><div></div>PAR-OTHER</div>	4	137	0.35%	12	8.76%	113	82.48%	14	10.22%	12	8.76%		
<div><div></div>PAR-RECUR</div>	8	1173	2.99%	71	6.05%	992	84.57%	116	9.89%	109	9.29%	1	0.09%
<div><div></div>Somerset excl North</div>	18	1643	4.19%	67	4.08%	1425	86.73%	108	6.57%	97	5.90%	54	3.29%
<div><div></div>PAR-CHR</div>	1	5	0.01%	2	40.00%	1	20.00%	2	40.00%	2	40.00%		
<div><div></div>PAR-CUL-P</div>	1	1	0.00%					1	100.00%	1	100.00%		
<div><div></div>PAR-RECUR</div>	16	1637	4.17%	65	3.97%	1424	86.99%	105	6.41%	94	5.74%	54	3.30%
<div><div></div>Staffordshire</div>	17	3491	8.90%	116	3.32%	3119	89.34%	288	8.25%	249	7.13%	7	0.20%
<div><div></div>PAR-CHR</div>	3	882	2.25%	34	3.85%	772	87.53%	83	9.41%	74	8.39%	2	0.23%
<div><div></div>PAR-PERSIS</div>	1	268	0.68%	1	0.37%	251	93.66%	16	5.97%	14	5.22%	2	0.75%
<div><div></div>PAR-RECUR</div>	13	2341	5.97%	81	3.46%	2096	89.53%	189	8.07%	161	6.88%	3	0.13%
<div><div></div>West Midlands</div>	4	509	1.30%	29	5.70%	452	88.80%	31	6.09%	28	5.50%		
<div><div></div>PAR-RECUR</div>	4	509	1.30%	29	5.70%	452	88.80%	31	6.09%	28	5.50%		
<div><div></div>Wiltshire</div>	10	1397	3.56%	106	7.59%	1226	87.76%	72	5.15%	65	4.65%		
<div><div></div>PAR-CUL-P</div>	1	424	1.08%	22	5.19%	389	91.75%	14	3.30%	13	3.07%		
<div><div></div>PAR-PERSIS</div>	3	496	1.26%	35	7.06%	428	86.29%	36	7.26%	33	6.65%		
<div><div></div>PAR-RECUR</div>	3	445	1.13%	36	8.09%	391	87.87%	21	4.72%	18	4.04%		
<div><div></div>SER-FLEXI</div>	3	32	0.08%	13	40.63%	18	56.25%	1	3.13%	1	3.13%		
<div><div></div>Worcestershire</div>	4	464	1.18%	31	6.68%	419	90.30%	19	4.09%	14	3.02%		
<div><div></div>PAR-CHR</div>	1	11	0.03%	4	36.36%	7	63.64%						
<div><div></div>PAR-RECUR</div>	3	453	1.15%	27	5.96%	412	90.95%	19	4.19%	14	3.09%		
<div><div></div>England - LRA</div>	31	4085	10.41%	139	3.40%	3726	91.21%	228	5.58%	197	4.82%	23	0.56%
<div><div></div>Bedfordshire</div>	1	146	0.37%	2	1.37%	132	90.41%	7	4.79%	6	4.11%	6	4.11%
<div><div></div>PAR-NEW-IN</div>	1	146	0.37%	2	1.37%	132	90.41%	7	4.79%	6	4.11%	6	4.11%
<div><div></div>Cumbria</div>	12	1986	5.06%	75	3.78%	1788	90.03%	118	5.94%	108	5.44%	15	0.76%
<div><div></div>PAR-NEW-IN</div>	12	1986	5.06%	75	3.78%	1788	90.03%	118	5.94%	108	5.44%	15	0.76%
<div><div></div>Durham</div>	3	410	1.05%	7	1.71%	379	92.44%	26	6.34%	24	5.85%		
<div><div></div>PAR-NEW-IN</div>	3	410	1.05%	7	1.71%	379	92.44%	26	6.34%	24	5.85%		
<div><div></div>Hertfordshire</div>	2	92	0.23%	3	3.26%	85	92.39%	2	2.17%	2	2.17%	2	2.17%
<div><div></div>PAR-NEW-IN</div>	2	92	0.23%	3	3.26%	85	92.39%	2	2.17%	2	2.17%	2	2.17%
<div><div></div>Kent</div>	1	143	0.36%	11	7.69%	125	87.41%	7	4.90%	7	4.90%		
<div><div></div>PAR-NEW-IN</div>	1	143	0.36%	11	7.69%	125	87.41%	7	4.90%	7	4.90%		
<div><div></div>Lincolnshire</div>	10	1275	3.25%	41	3.22%	1187	93.10%	64	5.02%	47	3.69%		
<div><div></div>PAR-NEW-IN</div>	10	1275	3.25%	41	3.22%	1187	93.10%	64	5.02%	47	3.69%		
<div><div></div>Surrey</div>	1	11	0.03%			11	100.00%						
<div><div></div>SER-NSR</div>	1	11	0.03%			11	100.00%						
<div><div></div>West Yorkshire</div>	1	22	0.06%			19	86.36%	4	18.18%	3	13.64%		
<div><div></div>PAR-NEW-IN</div>	1	22	0.06%			19	86.36%	4	18.18%	3	13.64%		
<div><div></div>Scotland</div>	7	686	1.75%	7	1.02%	655	95.48%	38	5.54%	24	3.50%		
<div><div></div>Scotland - Scotland</div>	7	686	1.75%	7	1.02%	655	95.48%	38	5.54%	24	3.50%		
<div><div></div>Argyll and Bute</div>	3	159	0.41%	1	0.63%	155	97.48%	6	3.77%	3	1.89%		
<div><div></div>PAR-NEW-IN</div>	3	159	0.41%	1	0.63%	155	97.48%	6	3.77%	3	1.89%		
<div><div></div>Dumfries &amp; Galloway</div>	4	527	1.34%	6	1.14%	500	94.88%	32	6.07%	21	3.98%		
<div><div></div>PAR-NEW-IN</div>	4	527	1.34%	6	1.14%	500	94.88%	32	6.07%	21	3.98%		
<div><div></div>Wales</div>	259	11728	29.89%	1283	10.94%	9792	83.49%	697	5.94%	567	4.83%	86	0.73%
<div><div></div>Wales - High TB</div>	186	7672	19.56%	985	12.84%	6265	81.66%	424	5.53%	357	4.65%	65	0.85%
<div><div></div>Carmarthenshire</div>	51	2688	6.85%	297	11.05%	2284	84.97%	124	4.61%	102	3.79%	5	0.19%
<div><div></div>PAR-IR-EX</div>	2	9	0.02%	4	44.44%	5	55.56%						
<div><div></div>PAR-IR-SEV</div>	8	42	0.11%	8	19.05%	33	78.57%	1	2.38%	1	2.38%		
<div><div></div>PAR-OTHER</div>	2	10	0.03%	1	10.00%	8	80.00%	1	10.00%	1	10.00%		
<div><div></div>PAR-PERSIS</div>	10	1120	2.85%	78	6.96%	1009	90.09%	42	3.75%	31	2.77%	2	0.18%
<div><div></div>PAR-RAPID</div>	12	36	0.09%	18	50.00%	17	47.22%	1	2.78%	1	2.78%		
<div><div></div>PAR-RECUR</div>	8	976	2.49%	78	7.99%	843	86.37%	58	5.94%				





**Table 3a. Summary of IFN Gamma results by country & protocol February 2025**

### Country Totals

Country	No Subs	No Samples	% of Total	No Positive	% Positive	No Negative	% Negative	No Retest	% Retest	No Resample	% Resample	No Rejected	% Rejected
⊞ England	117	11678		621	5.32%	10310	88.29%	754	6.46%	662	5.67%	85	0.73%
Parallel	115	11666	99.9 %	621	5.32%	10298	88.27%	754	6.46%	662	5.67%	85	0.73%
Serial / Extended	2	12	0.1 %			12	100.00%						
⊞ Wales	126	4686		557	11.89%	3816	81.43%	363	7.75%	291	6.21%	22	0.47%
Parallel	117	4333	92.5 %	525	12.12%	3522	81.28%	335	7.73%	270	6.23%	16	0.37%
Serial / Extended	9	353	7.5 %	32	9.07%	294	83.29%	28	7.93%	21	5.95%	6	1.70%
<b>Total</b>	<b>243</b>	<b>16364</b>		<b>1178</b>	<b>7.20%</b>	<b>14126</b>	<b>86.32%</b>	<b>1117</b>	<b>6.83%</b>	<b>953</b>	<b>5.82%</b>	<b>107</b>	<b>0.65%</b>

### GB Totals

Protocol	No Subs	No Samples	% of Total	No Positive	% Positive	No Negative	% Negative	No Retest	% Retest	No Resample	% Resample	No Rejected	% Rejected
Serial / Extended	11	365	2.2 %	32	8.77%	306	83.84%	28	7.67%	21	5.75%	6	1.64%
Parallel	232	15999	97.8 %	1146	7.16%	13820	86.38%	1089	6.81%	932	5.83%	101	0.63%
<b>Total</b>	<b>243</b>	<b>16364</b>		<b>1178</b>	<b>7.20%</b>	<b>14126</b>	<b>86.32%</b>	<b>1117</b>	<b>6.83%</b>	<b>953</b>	<b>5.82%</b>	<b>107</b>	<b>0.65%</b>



## Table 3b. Summary of IFN Gamma results by country & protocol (YTD)

### Country Totals

Country	No Subs	No Samples	% of Total	No Positive	% Positive	No Negative	% Negative	No Retest	% Retest	No Resample	% Resample	No Rejected	% Rejected
☐ England	228	26818		1444	5.38%	23655	88.21%	1772	6.61%	1546	5.76%	173	0.65%
Parallel	224	26775	99.8 %	1431	5.34%	23626	88.24%	1771	6.61%	1545	5.77%	173	0.65%
Serial / Extended	4	43	0.2 %	13	30.23%	29	67.44%	1	2.33%	1	2.33%		
☐ Scotland	7	686		7	1.02%	655	95.48%	38	5.54%	24	3.50%		
Parallel	7	686	100.0 %	7	1.02%	655	95.48%	38	5.54%	24	3.50%		
☐ Wales	259	11728		1283	10.94%	9792	83.49%	697	5.94%	567	4.83%	86	0.73%
Parallel	244	10836	92.4 %	1129	10.42%	9097	83.95%	647	5.97%	530	4.89%	80	0.74%
Serial / Extended	15	892	7.6 %	154	17.26%	695	77.91%	50	5.61%	37	4.15%	6	0.67%
<b>Total</b>	<b>494</b>	<b>39232</b>		<b>2734</b>	<b>6.97%</b>	<b>34102</b>	<b>86.92%</b>	<b>2507</b>	<b>6.39%</b>	<b>2137</b>	<b>5.45%</b>	<b>259</b>	<b>0.66%</b>

### GB Totals

Protocol	No Subs	No Samples	% of Total	No Positive	% Positive	No Negative	% Negative	No Retest	% Retest	No Resample	% Resample	No Rejected	% Rejected
Parallel	475	38297	97.6 %	2567	6.70%	33378	87.16%	2456	6.41%	2099	5.48%	253	0.66%
Serial / Extended	19	935	2.4 %	167	17.86%	724	77.43%	51	5.45%	38	4.06%	6	0.64%
<b>Total</b>	<b>494</b>	<b>39232</b>		<b>2734</b>	<b>6.97%</b>	<b>34102</b>	<b>86.92%</b>	<b>2507</b>	<b>6.39%</b>	<b>2137</b>	<b>5.45%</b>	<b>259</b>	<b>0.66%</b>

Table 4a. Summary of IFN Gamma results by submission reason February 2025

GB Totals

SUBMISSION_REASON	No Subs	Samples	% of Total	Gamma Positive	% Positive	Gamma Negative	% Negative	Retest	% Retest	Resample	% Resample	Rejected	% Rejected
PAR-CHR	1	245	1.50%	12	4.90%	215	87.76%	6	2.45%	5	2.04%	13	5.31%
PAR-CUL-P	2	228	1.39%	15	6.58%	203	89.04%	15	6.58%	10	4.39%		
PAR-HERD-S	1	18	0.11%	1	5.56%	15	83.33%	3	16.67%	2	11.11%		
PAR-IR-EX	7	23	0.14%	9	39.13%	11	47.83%	3	13.04%	3	13.04%		
PAR-IR-SEV	34	272	1.66%	118	43.38%	134	49.26%	15	5.51%	13	4.78%	7	2.57%
PAR-NEW-IN	58	5666	34.62%	242	4.27%	5059	89.29%	354	6.25%	296	5.22%	69	1.22%
PAR-OTHER	15	1810	11.06%	166	9.17%	1543	85.25%	121	6.69%	99	5.47%	2	0.11%
PAR-PERSIS	22	2093	12.79%	174	8.31%	1799	85.95%	138	6.59%	118	5.64%	2	0.10%
PAR-RAPID	22	54	0.33%	18	33.33%	34	62.96%	2	3.70%	2	3.70%		
PAR-RECUR	70	5590	34.16%	391	6.99%	4807	85.99%	432	7.73%	384	6.87%	8	0.14%
SER-FLEXI	10	354	2.16%	32	9.04%	295	83.33%	28	7.91%	21	5.93%	6	1.69%
SER-NSR	1	11	0.07%			11	100.00%						
Total	243	16364	100.00%	1178	7.20%	14126	86.32%	1117	6.83%	953	5.82%	107	0.65%

Country	No Subs	Samples	% of Total	Gamma Positive	% Positive	Gamma Negative	% Negative	Retest	% Retest	Resample	% Resample	Rejected	% Rejected
🇬🇧 England - Edge	38	3722	22.75%	161	4.33%	3304	88.77%	224	6.02%	195	5.24%	62	1.67%
PAR-NEW-IN	19	1356	8.29%	50	3.69%	1169	86.21%	86	6.34%	80	5.90%	57	4.20%
PAR-OTHER	4	529	3.23%	31	5.86%	467	88.28%	37	6.99%	31	5.86%		
PAR-PERSIS	1	125	0.76%	2	1.60%	121	96.80%	4	3.20%	2	1.60%		
PAR-RECUR	14	1712	10.46%	78	4.56%	1547	90.36%	97	5.67%	82	4.79%	5	0.29%
🇬🇧 England - HRA	60	5183	31.67%	366	7.06%	4461	86.07%	380	7.33%	340	6.56%	16	0.31%
PAR-CHR	1	245	1.50%	12	4.90%	215	87.76%	6	2.45%	5	2.04%	13	5.31%
PAR-CUL-P	2	228	1.39%	15	6.58%	203	89.04%	15	6.58%	10	4.39%		
PAR-OTHER	7	871	5.32%	75	8.61%	758	87.03%	46	5.28%	38	4.36%		
PAR-PERSIS	4	764	4.67%	36	4.71%	679	88.87%	52	6.81%	47	6.15%	2	0.26%
PAR-RECUR	45	3074	18.79%	228	7.42%	2605	84.74%	261	8.49%	240	7.81%	1	0.03%
SER-FLEXI	1	1	0.01%			1	100.00%						
🇬🇧 England - LRA	19	2773	16.95%	94	3.39%	2545	91.78%	150	5.41%	127	4.58%	7	0.25%
PAR-NEW-IN	18	2762	16.88%	94	3.40%	2534	91.75%	150	5.43%	127	4.60%	7	0.25%
SER-NSR	1	11	0.07%			11	100.00%						
🇬🇧 Wales - High TB	86	2624	16.04%	411	15.66%	2033	77.48%	207	7.89%	174	6.63%	6	0.23%
PAR-HERD-S	1	18	0.11%	1	5.56%	15	83.33%	3	16.67%	2	11.11%		
PAR-IR-EX	5	17	0.10%	8	47.06%	8	47.06%	1	5.88%	1	5.88%		
PAR-IR-SEV	28	247	1.51%	114	46.15%	121	48.99%	13	5.26%	11	4.45%	1	0.40%
PAR-NEW-IN	1	3	0.02%			3	100.00%	1	33.33%				
PAR-OTHER	4	410	2.51%	60	14.63%	318	77.56%	38	9.27%	30	7.32%	2	0.49%
PAR-PERSIS	15	1068	6.53%	125	11.70%	879	82.30%	74	6.93%	64	5.99%		
PAR-RAPID	18	49	0.30%	17	34.69%	30	61.22%	2	4.08%	2	4.08%		
PAR-RECUR	10	801	4.89%	85	10.61%	652	81.40%	73	9.11%	62	7.74%	2	0.25%
SER-FLEXI	4	11	0.07%	1	9.09%	7	63.64%	2	18.18%	2	18.18%	1	9.09%
🇬🇧 Wales - Intermediate TB	30	1723	10.53%	122	7.08%	1503	87.23%	130	7.54%	93	5.40%	5	0.29%
PAR-IR-EX	2	6	0.04%	1	16.67%	3	50.00%	2	33.33%	2	33.33%		
PAR-IR-SEV	4	19	0.12%	4	21.05%	12	63.16%	2	10.53%	2	10.53%	1	5.26%
PAR-NEW-IN	15	1271	7.77%	81	6.37%	1116	87.80%	96	7.55%	70	5.51%	4	0.31%
PAR-PERSIS	2	136	0.83%	11	8.09%	120	88.24%	8	5.88%	5	3.68%		
PAR-RAPID	4	5	0.03%	1	20.00%	4	80.00%						
PAR-RECUR	1	3	0.02%			3	100.00%	1	33.33%				
SER-FLEXI	2	283	1.73%	24	8.48%	245	86.57%	21	7.42%	14	4.95%		
🇬🇧 Wales - Low TB	10	339	2.07%	24	7.08%	280	82.60%	26	7.67%	24	7.08%	11	3.24%
PAR-IR-SEV	2	6	0.04%			1	16.67%					5	83.33%
PAR-NEW-IN	5	274	1.67%	17	6.20%	237	86.50%	21	7.66%	19	6.93%	1	0.36%
SER-FLEXI	3	59	0.36%	7	11.86%	42	71.19%	5	8.47%	5	8.47%	5	8.47%
Total	243	16364	100.00%	1178	7.20%	14126	86.32%	1117	6.83%	953	5.82%	107	0.65%



Table 4b. Summary of IFN Gamma results by submission reason (YTD)

GB Totals

Submission Reason	No Subs	Samples	% of Total	Gamma Positive	% Positive	Gamma Negative	% Negative	Retest	% Retest	Resample	% Resample	Rejected	% Rejected
PAR-CHR	8	1461	3.72%	77	5.27%	1282	87.75%	98	6.71%	87	5.95%	15	1.03%
PAR-CUL-N	1	2	0.01%			2	100.00%						
PAR-CUL-P	4	653	1.66%	37	5.67%	592	90.66%	30	4.59%	24	3.68%		
PAR-HERD-S	1	18	0.05%	1	5.56%	15	83.33%	3	16.67%	2	11.11%		
PAR-IR-EX	16	66	0.17%	29	43.94%	30	45.45%	7	10.61%	7	10.61%		
PAR-IR-SEV	72	606	1.54%	260	42.90%	313	51.65%	32	5.28%	26	4.29%	7	1.16%
PAR-NEW-IN	117	11462	29.22%	454	3.96%	10322	90.05%	710	6.19%	592	5.16%	94	0.82%
PAR-OTHER	30	2819	7.19%	290	10.29%	2386	84.64%	168	5.96%	140	4.97%	3	0.11%
PAR-PERSIS	54	5971	15.22%	492	8.24%	5169	86.57%	305	5.11%	258	4.32%	52	0.87%
PAR-RAPID	40	126	0.32%	41	32.54%	75	59.52%	2	1.59%	2	1.59%	8	6.35%
PAR-RECUR	132	15113	38.52%	886	5.86%	13192	87.29%	1101	7.29%	961	6.36%	74	0.49%
SER-FLEXI	18	924	2.36%	167	18.07%	713	77.16%	51	5.52%	38	4.11%	6	0.65%
SER-NSR	1	11	0.03%			11	100.00%						
Total	494	39232	100.00%	2734	6.97%	34102	86.92%	2507	6.39%	2137	5.45%	259	0.66%

Country Totals

Country	No Subs	Samples	% of Total	Gamma Positive	% Positive	Gamma Negative	% Negative	Retest	% Retest	Resample	% Resample	Rejected	% Rejected
England	228	26818	68.36%	1444	5.38%	23655	88.21%	1772	6.61%	1546	5.76%	173	0.65%
England - Edge	72	6666	16.99%	294	4.41%	5936	89.05%	422	6.33%	368	5.52%	68	1.02%
PAR-NEW-IN	43	3521	8.97%	147	4.17%	3111	88.36%	223	6.33%	201	5.71%	62	1.76%
PAR-OTHER	6	675	1.72%	42	6.22%	597	88.44%	44	6.52%	36	5.33%		
PAR-PERSIS	1	125	0.32%	2	1.60%	121	96.80%	4	3.20%	2	1.60%		
PAR-RECUR	22	2345	5.98%	103	4.39%	2107	89.85%	151	6.44%	129	5.50%	6	0.26%
England - HRA	125	16067	40.95%	1011	6.29%	13993	87.09%	1122	6.98%	981	6.11%	82	0.51%
PAR-CHR	8	1461	3.72%	77	5.27%	1282	87.75%	98	6.71%	87	5.95%	15	1.03%
PAR-CUL-N	1	2	0.01%			2	100.00%						
PAR-CUL-P	4	653	1.66%	37	5.67%	592	90.66%	30	4.59%	24	3.68%		
PAR-OTHER	15	1692	4.31%	174	10.28%	1443	85.28%	86	5.08%	74	4.37%	1	0.06%
PAR-PERSIS	5	1043	2.66%	71	6.81%	900	86.29%	78	7.48%	70	6.71%	2	0.19%
PAR-RECUR	89	11184	28.51%	639	5.71%	9756	87.23%	829	7.41%	725	6.48%	64	0.57%
SER-FLEXI	3	32	0.08%	13	40.63%	18	56.25%	1	3.13%	1	3.13%		
England - LRA	31	4085	10.41%	139	3.40%	3726	91.21%	228	5.58%	197	4.82%	23	0.56%
PAR-NEW-IN	30	4074	10.38%	139	3.41%	3715	91.19%	228	5.60%	197	4.84%	23	0.56%
SER-NSR	1	11	0.03%			11	100.00%						
Scotland	7	686	1.75%	7	1.02%	655	95.48%	38	5.54%	24	3.50%		
Scotland - Scotland	7	686	1.75%	7	1.02%	655	95.48%	38	5.54%	24	3.50%		
PAR-NEW-IN	7	686	1.75%	7	1.02%	655	95.48%	38	5.54%	24	3.50%		
Wales	259	11728	29.89%	1283	10.94%	9792	83.49%	697	5.94%	567	4.83%	86	0.73%
Wales - High TB	186	7672	19.56%	985	12.84%	6265	81.66%	424	5.53%	357	4.65%	65	0.85%
PAR-HERD-S	1	18	0.05%	1	5.56%	15	83.33%	3	16.67%	2	11.11%		
PAR-IR-EX	12	44	0.11%	22	50.00%	17	38.64%	5	11.36%	5	11.36%		
PAR-IR-SEV	61	530	1.35%	236	44.53%	270	50.94%	29	5.47%	23	4.34%	1	0.19%
PAR-NEW-IN	1	3	0.01%			3	100.00%	1	33.33%				
PAR-OTHER	8	443	1.13%	69	15.58%	342	77.20%	38	8.58%	30	6.77%	2	0.45%
PAR-PERSIS	43	4482	11.42%	369	8.23%	3887	86.72%	209	4.66%	177	3.95%	49	1.09%
PAR-RAPID	33	112	0.29%	36	32.14%	66	58.93%	2	1.79%	2	1.79%	8	7.14%
PAR-RECUR	18	1545	3.94%	142	9.19%	1296	83.88%	116	7.51%	103	6.67%	4	0.26%
SER-FLEXI	9	495	1.26%	110	22.22%	369	74.55%	21	4.24%	15	3.03%	1	0.20%
Wales - Intermediate TB	53	3229	8.23%	243	7.53%	2821	87.36%	214	6.63%	156	4.83%	9	0.28%
PAR-IR-EX	4	22	0.06%	7	31.82%	13	59.09%	2	9.09%	2	9.09%		
PAR-IR-SEV	9	70	0.18%	24	34.29%	42	60.00%	3	4.29%	3	4.29%	1	1.43%
PAR-NEW-IN	22	2471	6.30%	126	5.10%	2214	89.60%	169	6.84%	124	5.02%	7	0.28%
PAR-OTHER	1	9	0.02%	5	55.56%	4	44.44%						
PAR-PERSIS	5	321	0.82%	50	15.58%	261	81.31%	14	4.36%	9	2.80%	1	0.31%
PAR-RAPID	7	14	0.04%	5	35.71%	9	64.29%						
PAR-RECUR	3	39	0.10%	2	5.13%	33	84.62%	5	12.82%	4	10.26%		
SER-FLEXI	2	283	0.72%	24	8.48%	245	86.57%	21	7.42%	14	4.95%		
Wales - Low TB	20	827	2.11%	55	6.65%	706	85.37%	59	7.13%	54	6.53%	12	1.45%
PAR-IR-SEV	2	6	0.02%			1	16.67%					5	83.33%
PAR-NEW-IN	14	707	1.80%	35	4.95%	624	88.26%	51	7.21%	46	6.51%	2	0.28%
SER-FLEXI	4	114	0.29%	20	17.54%	81	71.05%	8	7.02%	8	7.02%	5	4.39%
Total	494	39232	100.00%	2734	6.97%	34102	86.92%	2507	6.39%	2137	5.45%	259	0.66%

# Table 5a. Summary of PM and culture results for IFNg positive animals

Year	Month	Herds Sampled	Samples Tested	Herds with Positives	IFNG+ Samples	Wrong Ear Tags	NoPM / No Cult	NoPM / Cult Pend	NoPM / Cult Neg	NoPM / Cult Mb	NoPM / Cult Other	VL / No Cult	VL / Cult Neg	VL / Cult Pen	VL / Cult Mb	VL / Cult Other	NVL / No Cult	NVL / Cult Pen	NVL / Cult Neg	NVL / Cult Mb	NVL / Cult Other
2024	March	215	19876	142	1054		15					70	2		26		879		60		
2024	April	237	18969	146	1092		4					44	4		11		958		71		
2024	May	207	15411	129	733							11	3		9		657		53		
2024	June	197	18101	133	797		9					32	1		19		720		2		14
2024	July	223	19494	124	825		7					25	4		20		753	1	7	1	6
2024	August	197	14635	123	639		25					21	2		17		551	1	21		
2024	September	174	11490	104	803		20					88	7		8	2	673		5		
2024	October	243	20535	159	1136		11					35	9	1	27	1	1035		19		
2024	November	248	18671	155	1039	1	8					79	9	1	13	3	890		35		
2024	December	185	14677	117	942		14					73			31	12	797		15		
2025	January	251	22868	167	1556	5	116					61		15	18	3	1338				
2025	February	243	16364	156	1178	336	476					8		4			93				
Total		2620	211091	1655	11794	342	705					547	41	21	199	21	9344	2	288	1	20

**Table 5b. Summary of culture results for IFNg positive animals  
(Samples received in last 12 months)**

Country	Herds Sampled	Samples Tested	Herds with Positives	IFNG+ Samples	NoPM / No Cult	NoPM / Cult Pend	NoPM / Cult Neg	NoPM / Cult Mb	NoPM / Cult Other	VL / No Cult	VL / Cult Neg	VL / Cult Pen	VL / Cult Mb	VL / Cult Other	NVL / No Cult	NVL / Cult Pen	NVL / Cult Neg	NVL / Cult Mb	NVL / Cult Other
England	1106	137123	739	6309	380					457	10	9	109	6	4865	2	115	1	
Scotland	37	6787	29	162							3		14		134		10		
Wales	1477	67181	887	5323	325					90	28	12	76	15	4345		163		20
<b>Total</b>	<b>2620</b>	<b>211091</b>	<b>1655</b>	<b>11794</b>	<b>705</b>					<b>547</b>	<b>41</b>	<b>21</b>	<b>199</b>	<b>21</b>	<b>9344</b>	<b>2</b>	<b>288</b>	<b>1</b>	<b>20</b>



Figure 4a. Number of herds sampled for IFNg and numbers of herds with any positive IFNg results.

Herds with Negatives and Herds with Positives by ISO Year, Month Of Year and Month Name

● Herds with Negatives ● Herds with Positives

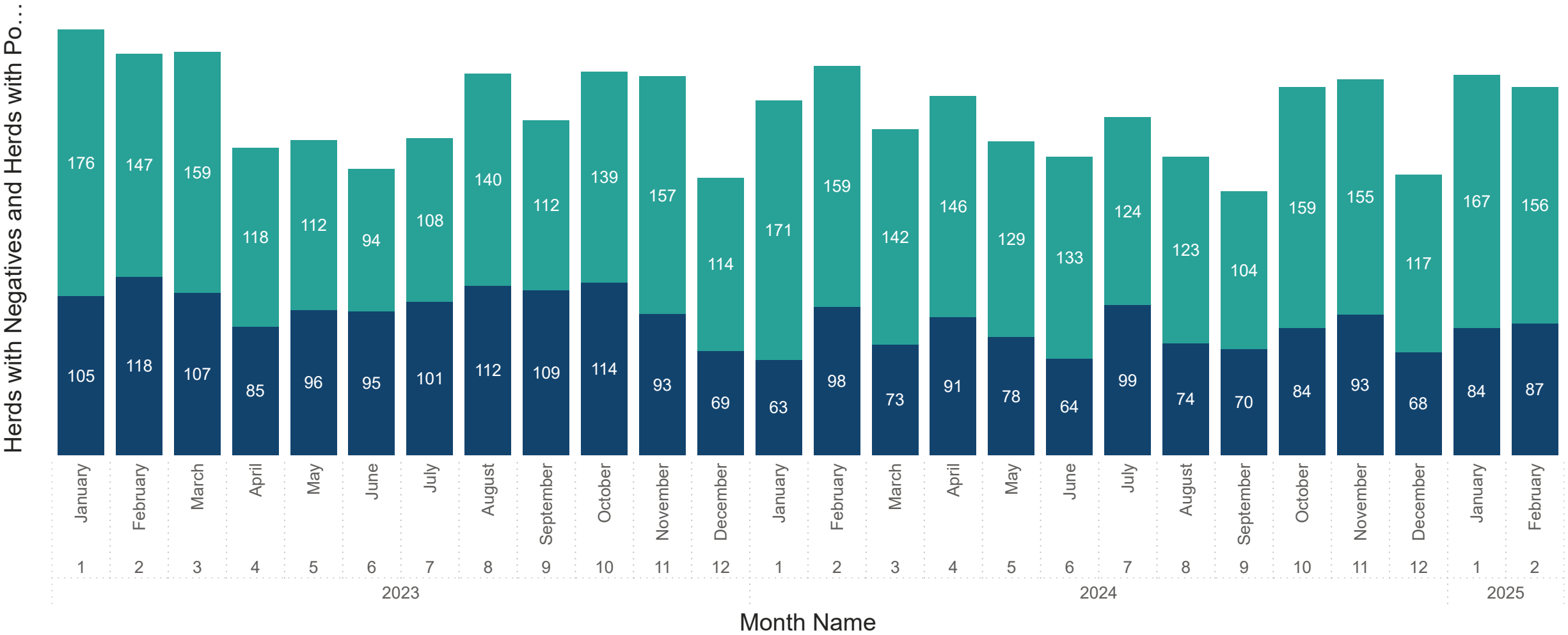


Figure 4b. Number of animals sampled for IFNg and numbers of animals with positive IFNg results.

IFNg results by Year and Month

IFNg Non Positive Animals IFNg Positive Animals

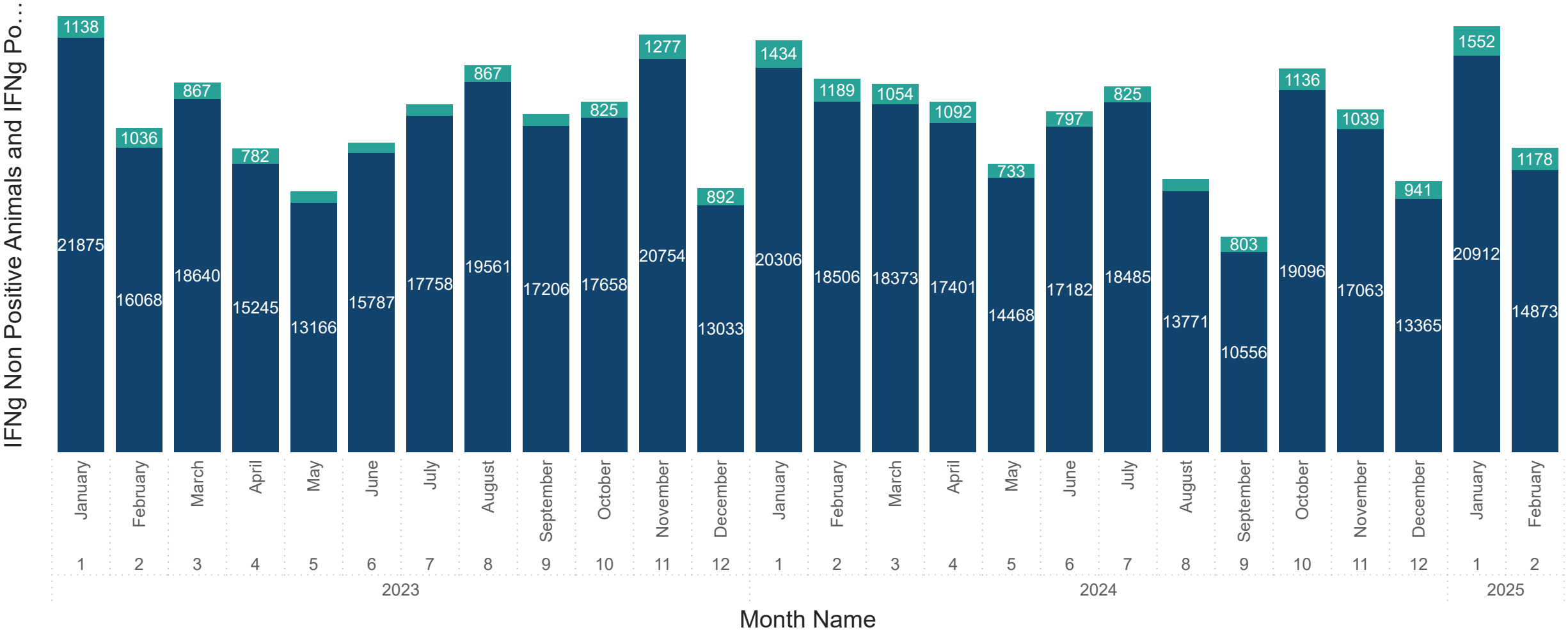


Figure 5. Rates of resamples including the fail rates broken down for positive (POS) and negative (NEG) controls

% Resample, % Rejected, % Pos Fail and % Neg Fail by ISO Year, Month Of Year and Month Name

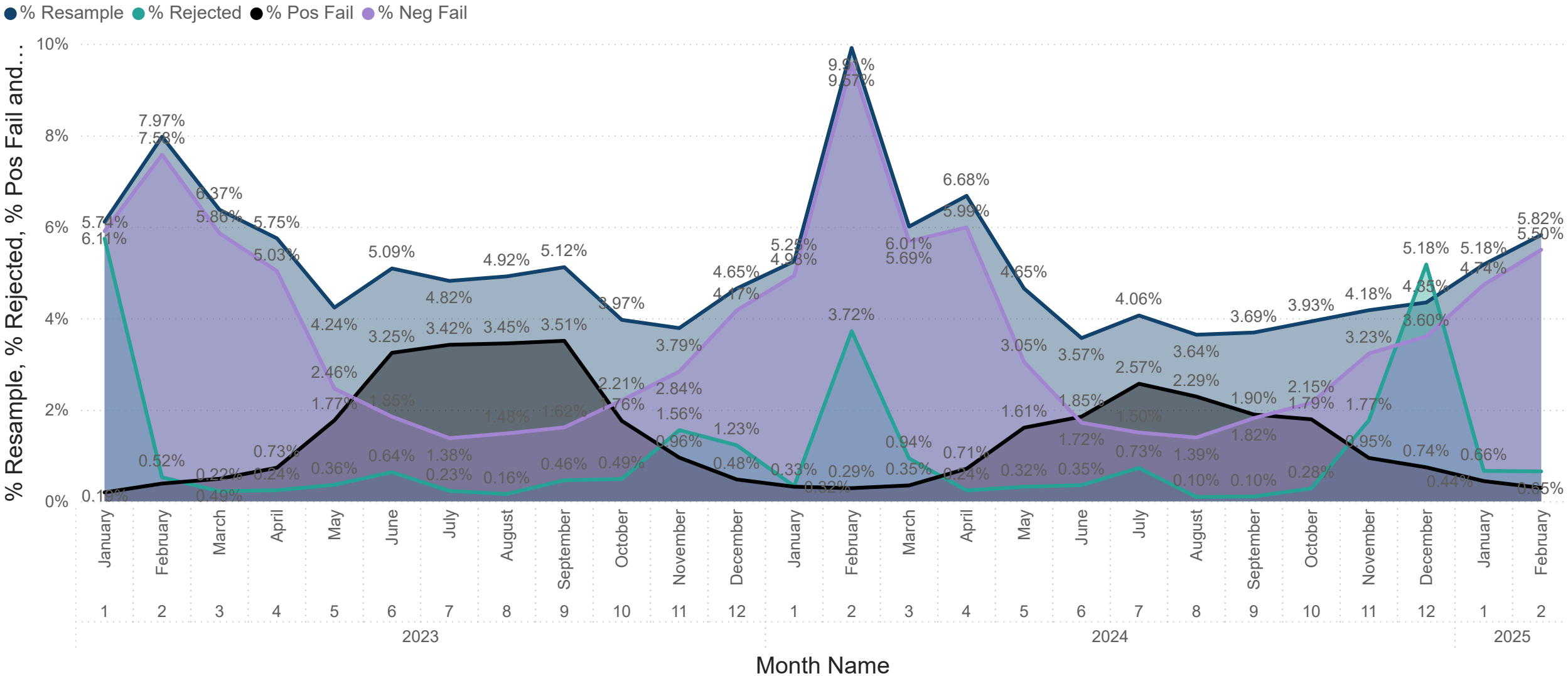
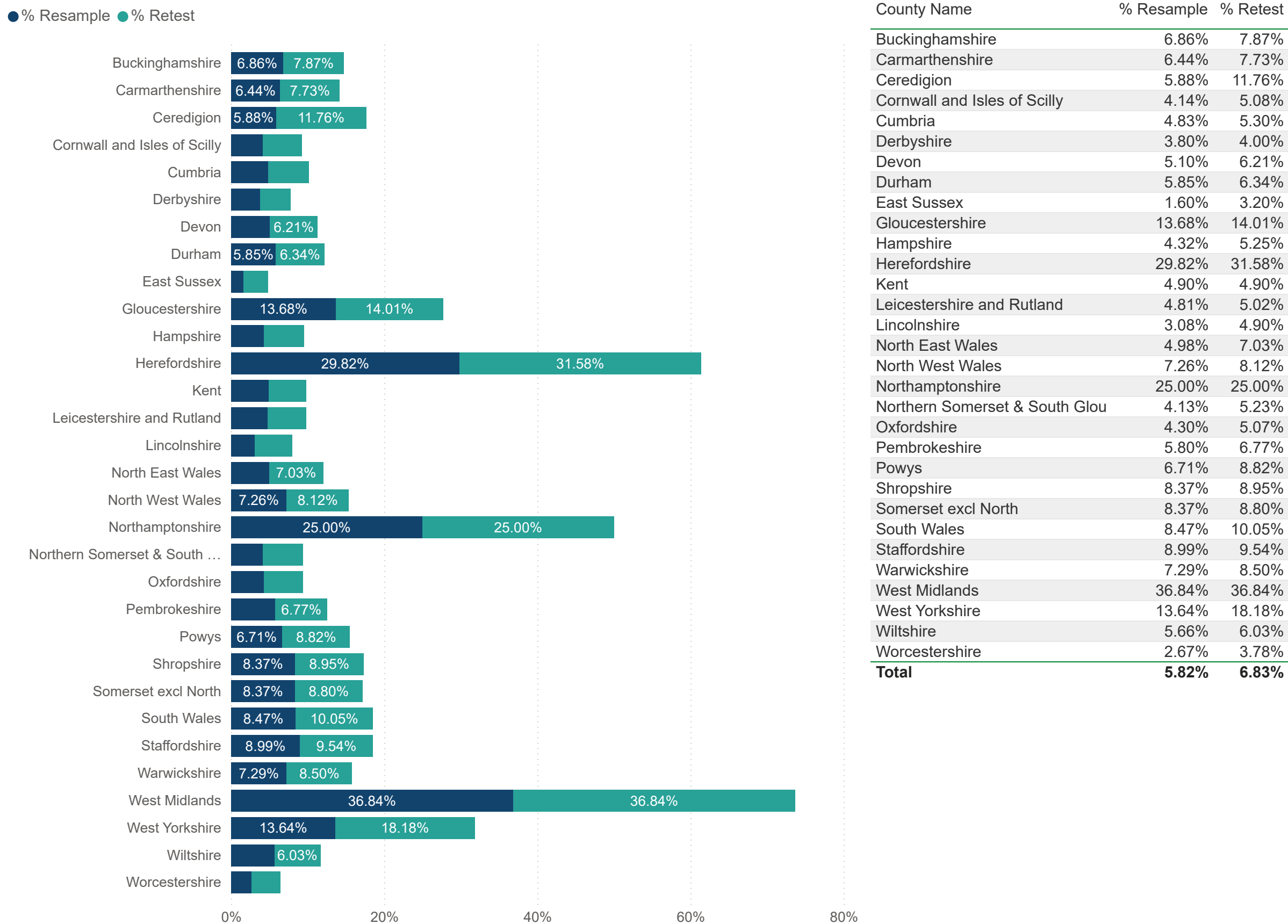




Figure 6. Proportion of samples retested, or requiring a resample February 2025



## Table 6. Number of animals and submissions tested

**February 2025** Table 6a (i): Number of animals and submissions tested

Country	No. Animals	No of IFNg+ animals	% Positive Animals	No Samples	No IFNG+ Samples	% Positive Samples
England	11540	621	5.4 %	11678	621	5.32%
Wales	4511	557	12.3 %	4686	557	11.89%
<b>Total</b>	<b>16051</b>	<b>1178</b>	<b>7.3 %</b>	<b>16364</b>	<b>1178</b>	<b>7.20%</b>

**February 2024** Table 6a (ii): Number of animals and submissions tested

Country	No. Animals	No of IFNg+ animals	% Positive Animals	No Samples	No IFNG+ Samples	% Positive Samples
England	14823	787	5.3 %	15367	787	5.12%
Scotland	351	12	3.4 %	381	12	3.15%
Wales	4521	390	8.6 %	4762	390	8.19%
<b>Total</b>	<b>19695</b>	<b>1189</b>	<b>6.0 %</b>	<b>20510</b>	<b>1189</b>	<b>5.80%</b>

**YTD February 2025** Table 6b (i): Number of animals and submissions tested

Country	No. Animals	No of IFNg+ animals	% Positive Animals	No Samples	No IFNG+ Samples	% Positive Samples
England	25946	1444	5.6 %	26818	1444	5.38%
Scotland	665	7	1.1 %	686	7	1.02%
Wales	11305	1279	11.3 %	11728	1283	10.94%
<b>Total</b>	<b>37915</b>	<b>2730</b>	<b>7.2 %</b>	<b>39232</b>	<b>2734</b>	<b>6.97%</b>

**YTD February 2024** Table 6b (ii): Number of animals and submissions tested

Country	No. Animals	No of IFNg+ animals	% Positive Animals	No Samples	No IFNG+ Samples	% Positive Samples
England	26351	1474	5.6 %	27303	1478	5.41%
Scotland	378	12	3.2 %	408	12	2.94%
Wales	14128	1137	8.0 %	14794	1137	7.69%
<b>Total</b>	<b>40855</b>	<b>2623</b>	<b>6.4 %</b>	<b>42505</b>	<b>2627</b>	<b>6.18%</b>

# Tables 7a and 7b Number of private samples (month and YTD)

**Table 7a Number of private samples (month)**

County Name	Test Type*	No of Submissions	Number of Samples	Positive	%Positive
Gloucestershire	PRV-SE	2	95	17	17.89%
<b>Total</b>		<b>2</b>	<b>95</b>	<b>17</b>	<b>17.89%</b>

**Table 7b Number of private samples (YTD)**

County Name	Test Type*	No of Submissions	Number of Samples	Positive	%Positive
Devon	PRV-SE	1	63	16	25.40%
Gloucestershire	PRV-SE	2	95	17	17.89%
<b>Total</b>		<b>3</b>	<b>158</b>	<b>33</b>	<b>20.89%</b>

\*SER-IOM: Serial High Specificity test – Isle of Man; PRV-SE: Private High Sensitivity test - England; PRV-SP: Private High Specificity test – England





Table 8a Number of Cattle Antibody Tests February 2025

## Country Totals

Country	Num Submissions	Num Samples Tested	Num Positive Samples	% Positive
☐ <b>Wales</b>	<b>31</b>	<b>360</b>	<b>95</b>	<b>26.39%</b>
☐ <b>Carmarthenshire</b>	<b>1</b>	<b>8</b>	<b>3</b>	<b>37.50%</b>
BOV-IR-EX	1	8	3	37.50%
☐ <b>Ceredigion</b>	<b>5</b>	<b>15</b>	<b>4</b>	<b>26.67%</b>
BOV-IR-C	4	13	4	30.77%
BOV-IR-EX	1	2		
☐ <b>North East Wales</b>	<b>4</b>	<b>18</b>	<b>10</b>	<b>55.56%</b>
BOV-IR-C	3	15	7	46.67%
BOV-IR-EX	1	3	3	100.00%
☐ <b>Pembrokeshire</b>	<b>15</b>	<b>222</b>	<b>67</b>	<b>30.18%</b>
BOV-IR-C	15	222	67	30.18%
☐ <b>Powys</b>	<b>4</b>	<b>83</b>	<b>10</b>	<b>12.05%</b>
BOV-IR-C	3	27	3	11.11%
BOV-OTHER	1	56	7	12.50%
☐ <b>South Wales</b>	<b>2</b>	<b>14</b>	<b>1</b>	<b>7.14%</b>
BOV-IR-C	2	14	1	7.14%
<b>Total</b>	<b>31</b>	<b>360</b>	<b>95</b>	<b>26.39%</b>

Table 8a Number of Cattle Antibody Tests YTD

Country Totals

Country	Num Submissions	Num Samples Tested	Num Positive Samples	% Positive
<div><div></div>England</div>	2	209	10	4.78%
<div><div><div></div>Wiltshire</div></div>	2	209	10	4.78%
<div><div><div>BOV-OTHER</div></div></div>	1	178	9	5.06%
<div><div><div>BOV-P</div></div></div>	1	31	1	3.23%
<div><div></div>Wales</div>	69	710	170	23.94%
<div><div><div></div>Carmarthenshire</div></div>	10	57	9	15.79%
<div><div><div>BOV-IR-C</div></div></div>	8	48	6	12.50%
<div><div><div>BOV-IR-EX</div></div></div>	2	9	3	33.33%
<div><div><div></div>Ceredigion</div></div>	7	44	19	43.18%
<div><div><div>BOV-IR-C</div></div></div>	5	40	17	42.50%
<div><div><div>BOV-IR-EX</div></div></div>	2	4	2	50.00%
<div><div><div></div>North East Wales</div></div>	9	73	21	28.77%
<div><div><div>BOV-IR-C</div></div></div>	8	70	18	25.71%
<div><div><div>BOV-IR-EX</div></div></div>	1	3	3	100.00%
<div><div><div></div>Pembrokeshire</div></div>	32	414	106	25.60%
<div><div><div>BOV-IR-C</div></div></div>	29	396	103	26.01%
<div><div><div>BOV-IR-EX</div></div></div>	3	18	3	16.67%
<div><div><div></div>Powys</div></div>	6	89	12	13.48%
<div><div><div>BOV-IR-C</div></div></div>	4	28	3	10.71%
<div><div><div>BOV-IR-EX</div></div></div>	1	5	2	40.00%
<div><div><div>BOV-OTHER</div></div></div>	1	56	7	12.50%
<div><div><div></div>South Wales</div></div>	5	33	3	9.09%
<div><div><div>BOV-IR-C</div></div></div>	4	19	3	15.79%
<div><div><div>BOV-OTHER</div></div></div>	1	14		
Total	71	919	180	19.59%