

BUILD THE LEGENDARY

H.M.S.

BOUNTY

ADMIRALTY MODEL

PHASE

PAGE

26	Cradle	106
27	Culverin 04	109
28	Theory - Beveled corners	110
29	Frame 11	118
30	Frame 12	122
31	Frame G	126
32	Frame H	130
33	Hawse Pieces 02	134
34	Lifeboat Yard	152

Design and production by Incipit srl

Assembly guide edited by Milanoedit srl - www.milanoedit.com

Published in Italy by De Agostini Publishing Italia S.p.A., 28100 Novara, Via G. da Verrazano 15

All rights reserved © 2020.

UNSUITABLE FOR CHILDREN UNDER 14. THE PRODUCT IS NOT A TOY
AND MUST BE USED UNDER ADULT SUPERVISION.

PARTS MAY BE DIFFERENT FROM THE PICTURED ONES

DE AGOSTINI
MODELSPACE™

www.model-space.com

ASSEMBLY INSTRUCTIONS

PACK 04

List of components

Cradle:

MDF board 4-08

Cantiere scialuppa:

MDF board 4-09

Frames:

wooden tablet 4-01

wooden tablet 4-02

wooden tablet 4-03

wooden tablet 4-04

Keel boat/pumps:

wooden tablet 4-07 *

Hawse Pieces:

wooden tablet 4-05

wooden tablet 4-06

2 culverins

2 forks



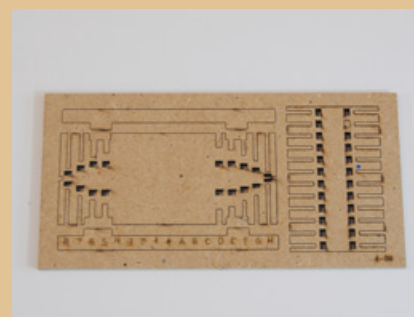
* **Note:** store tablet 4-07 with care, you will use it in the next packs.



4-07



4-08



4-09



4-06



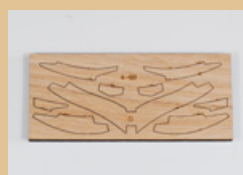
4-01



4-02



4-05



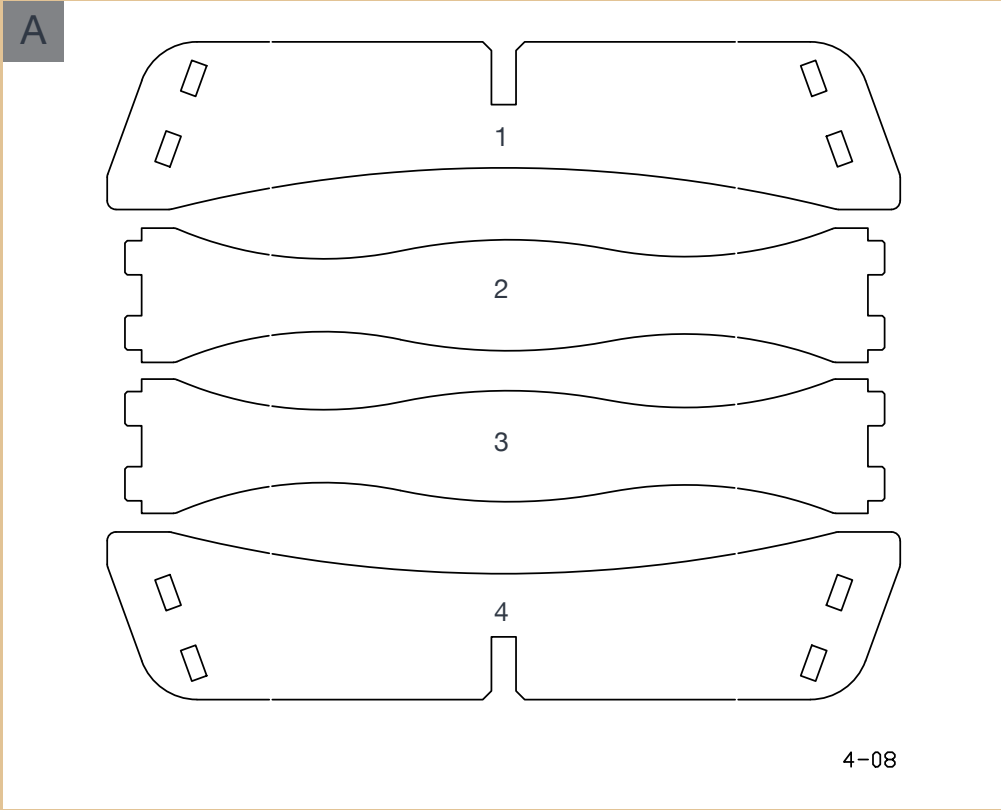
4-03



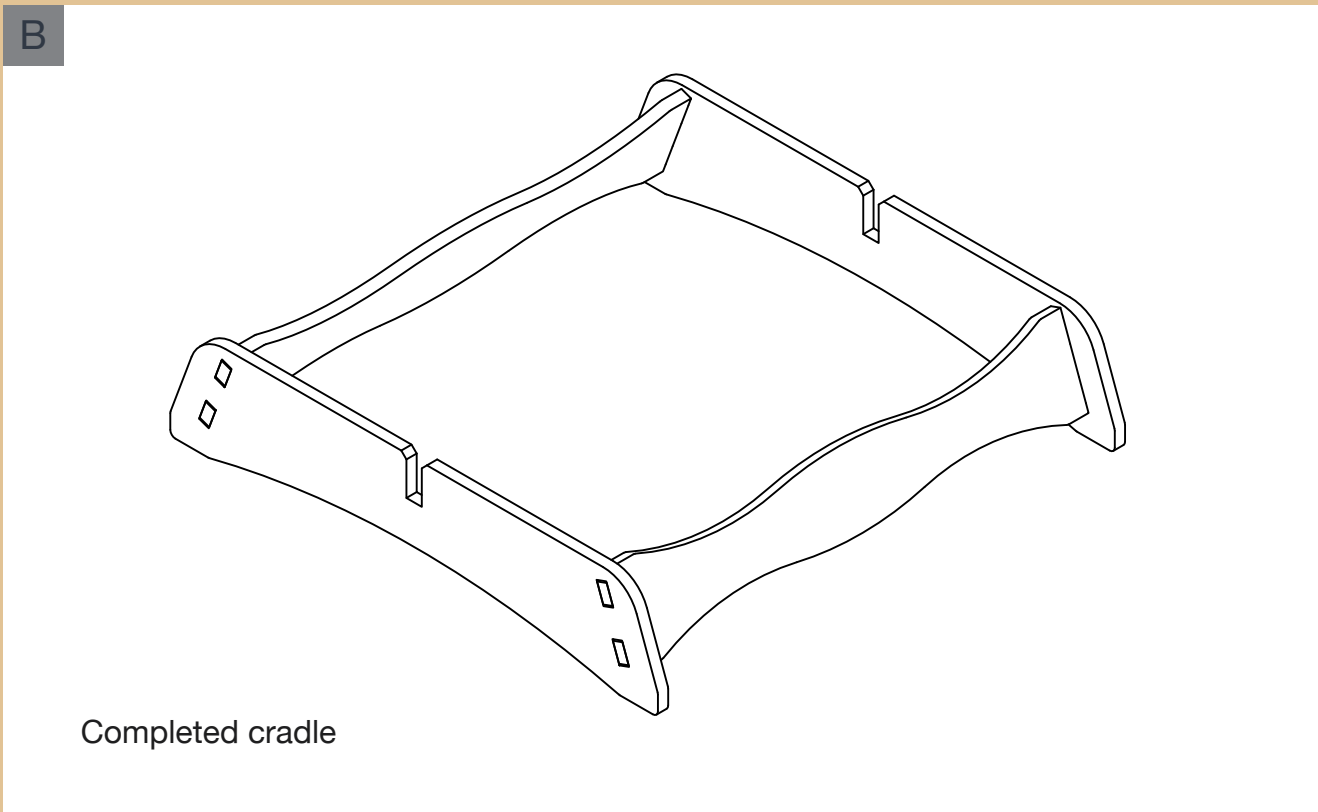
4-04

PHASE 26

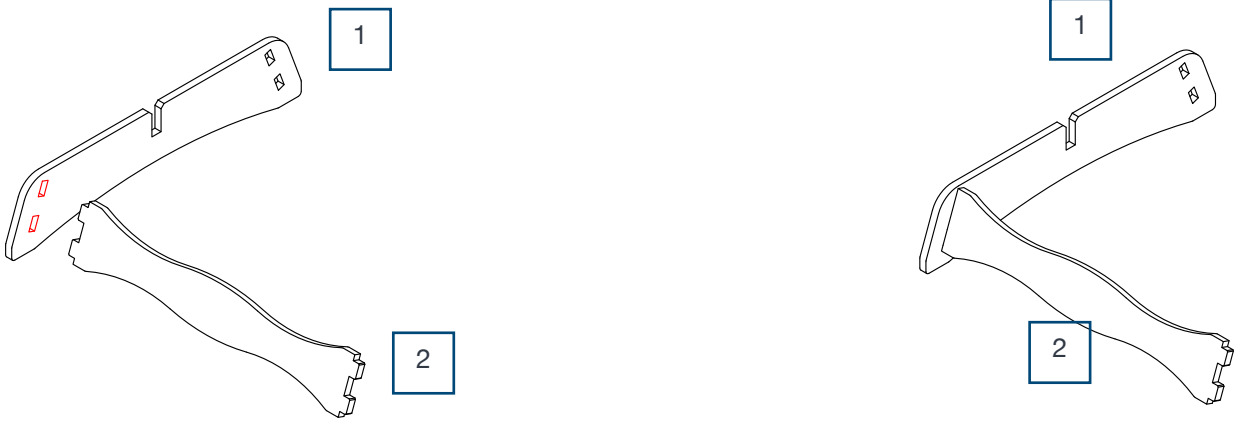
Cradle



A Drawing of board 4-08.

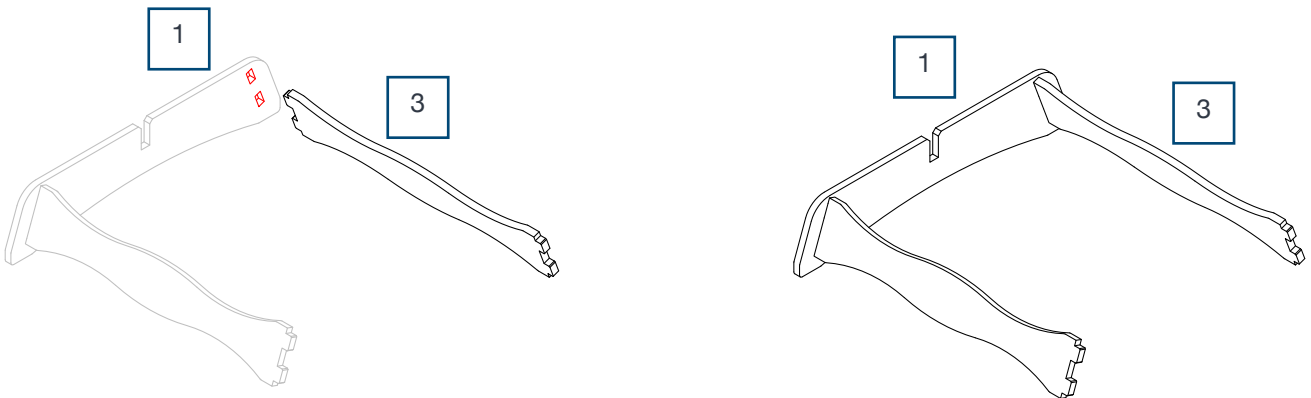


1

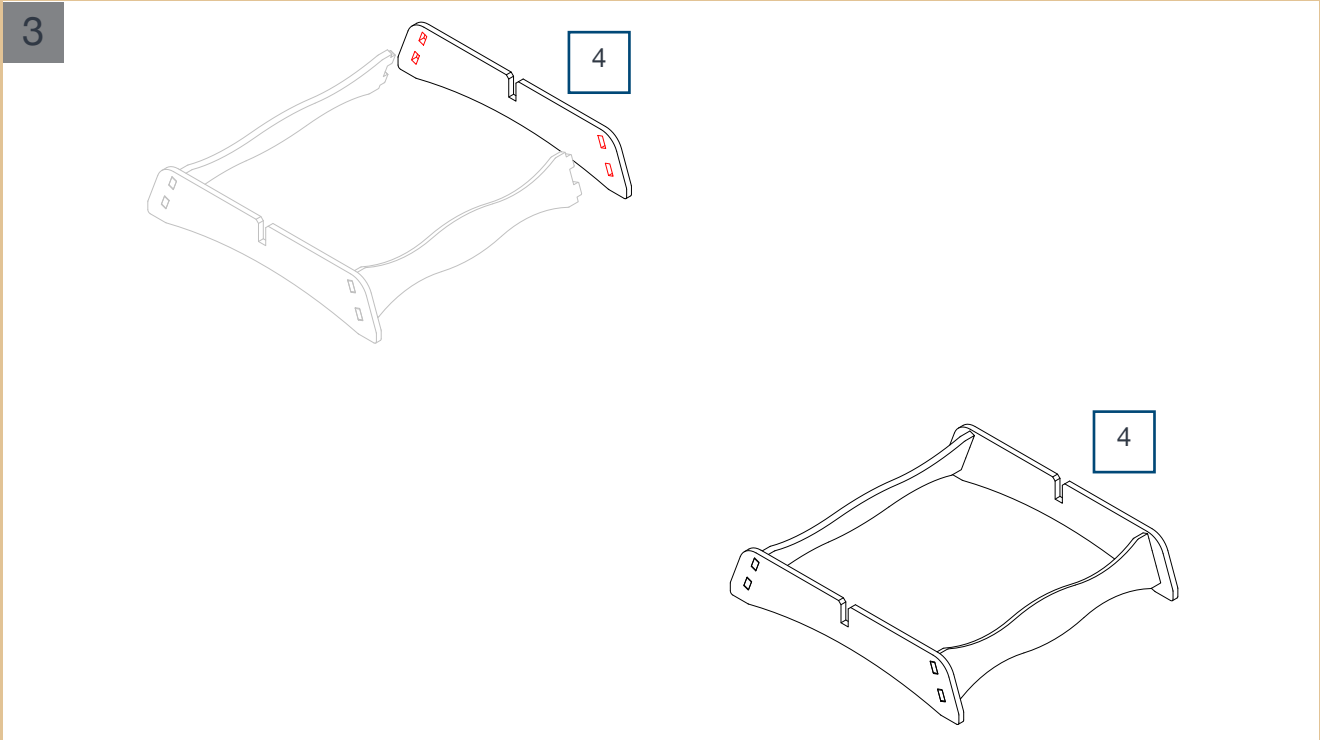


1 Detach pieces 1 and 2 from board 4-08 and glue them into the joints of the cradle by applying glue onto the parts highlighted in red.

2



2 Detach piece 3 from board 4-08 and glue it to piece 1 by applying glue onto the part highlighted in red.



3 Detach piece 4 from board 4-08 and glue it by applying glue onto the part highlighted in red.



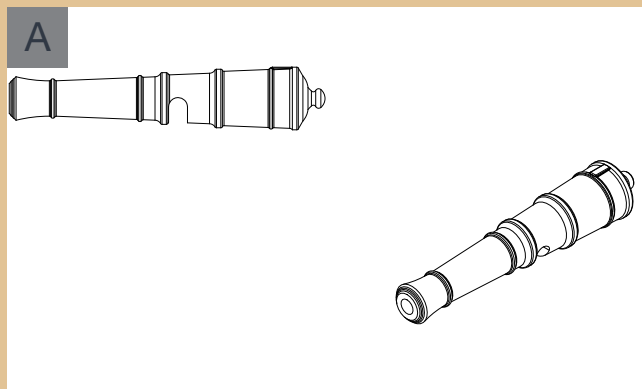
4 Completed cradle (front view).



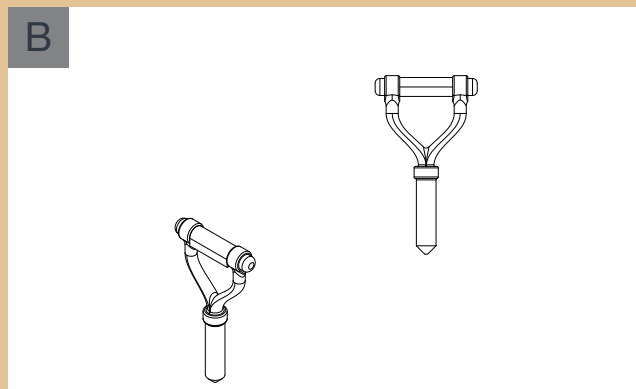
5 Completed cradle (top view).

PHASE 27

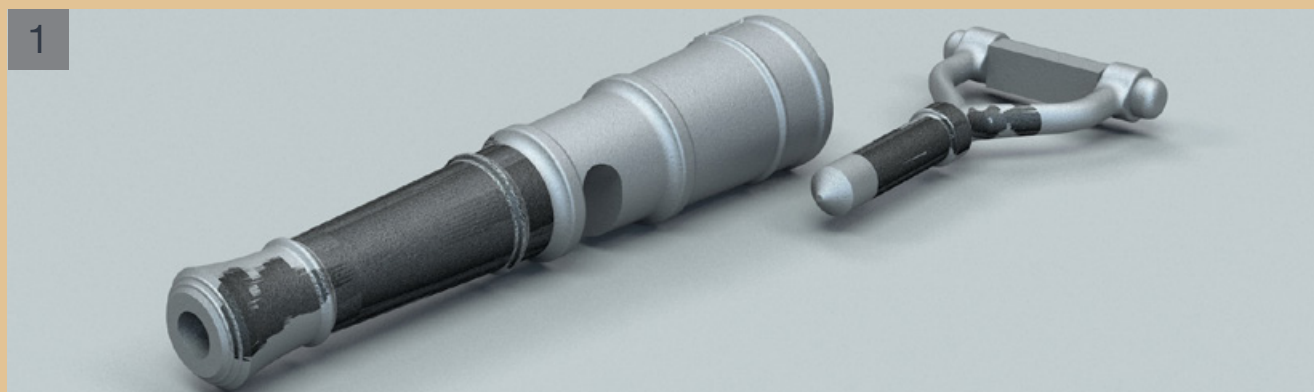
Culverin 04



A Side and axonometric view of 1/2 pound culverin.



B Side and axonometric view of the 1/2 pound culverin fork.



1 Paint the culverin and fork with Gun Metal.



2 The painted culverin and fork. Do not assemble the culverin and the fork yet: this operation will be carried out later. Store the two pieces with care so as not to risk losing them.

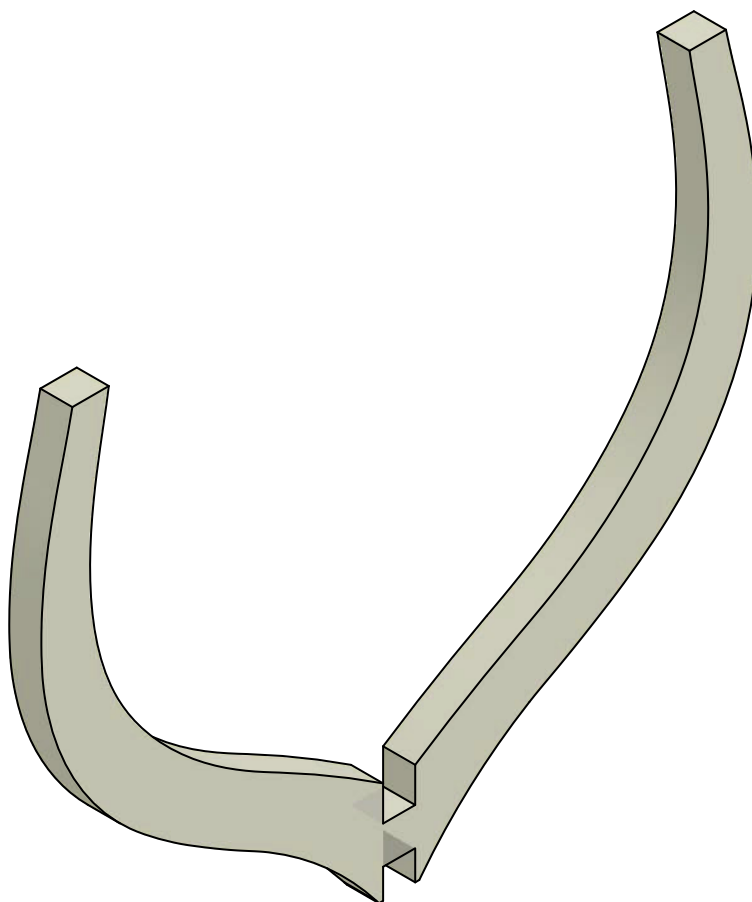
PHASE 28

THEORY - THE BEVELED CORNER

As already explained in Pack 03, the beveled corner allows the courses of the planking, which rests on the frames of the bow and stern, to adhere perfectly.

To make the beveled corner, it is necessary to remove a portion of wood from each frame, from the upper part to its lower tip. Depending on the length of the model, the exception is for the frames in the centre of the ship, which often do not have the beveled corner. The frames mostly involved in the beveled corner will be those of the bow and stern, where the planking has more accentuated curves.

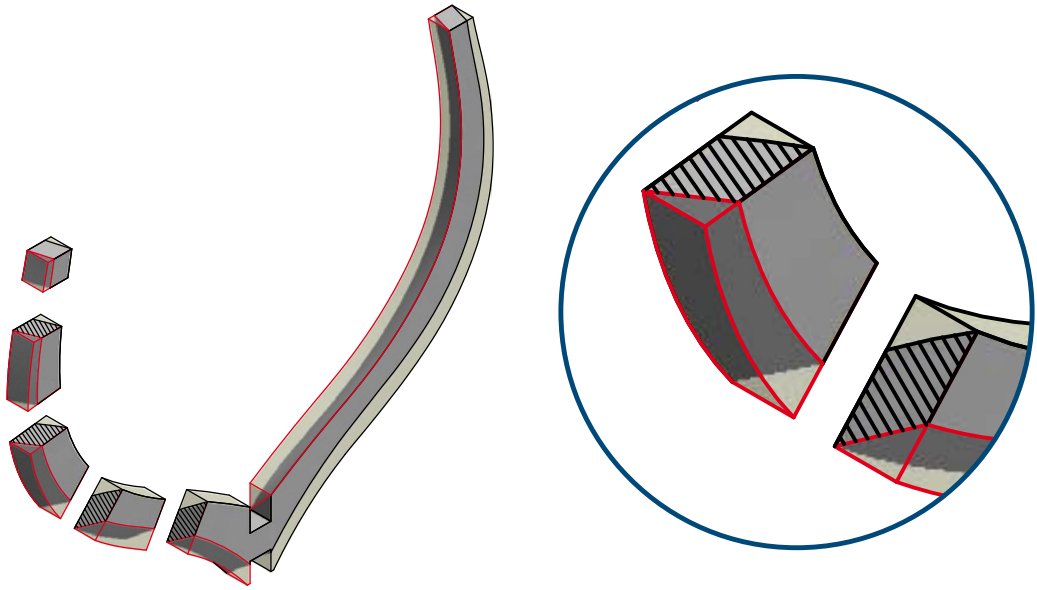
A



A

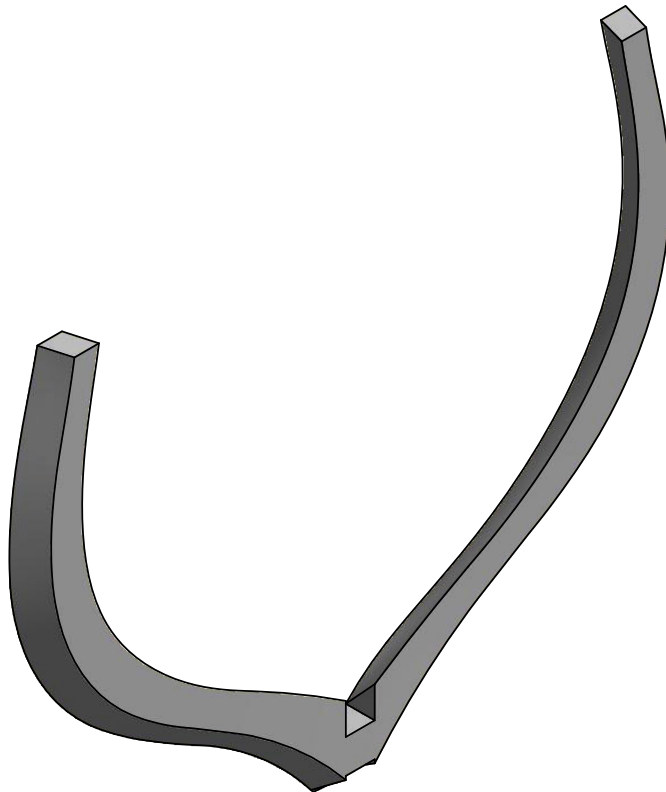
Drawing of the frame without beveled corner.

B



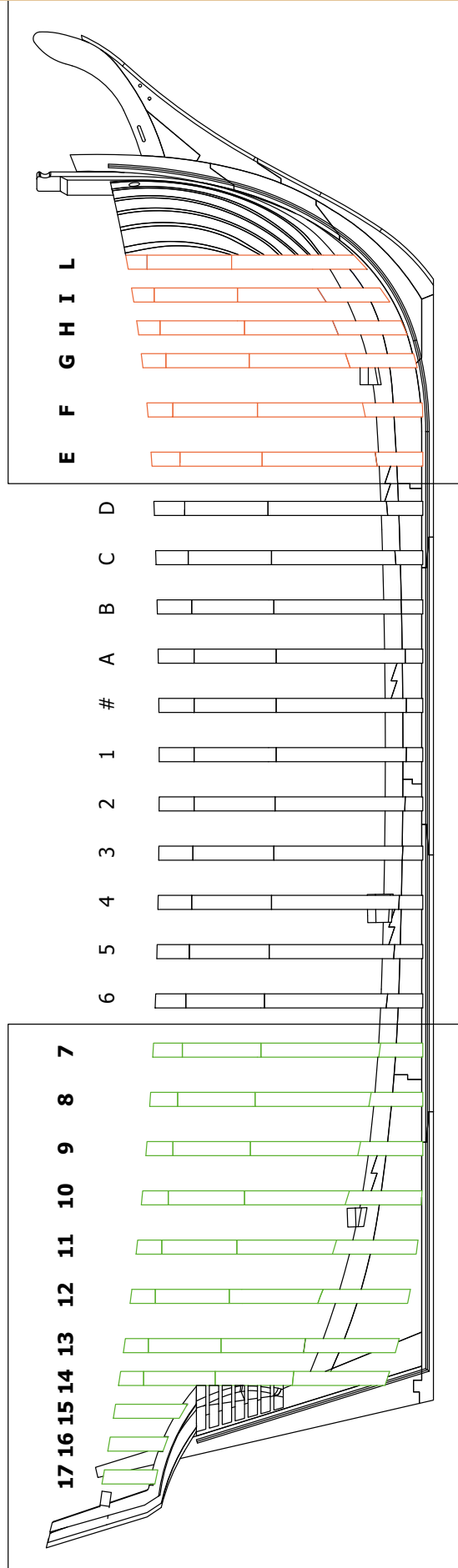
B Drawing of the section to be removed from the frame to create the beveled corner. The section marked in red is the part to be removed.

C



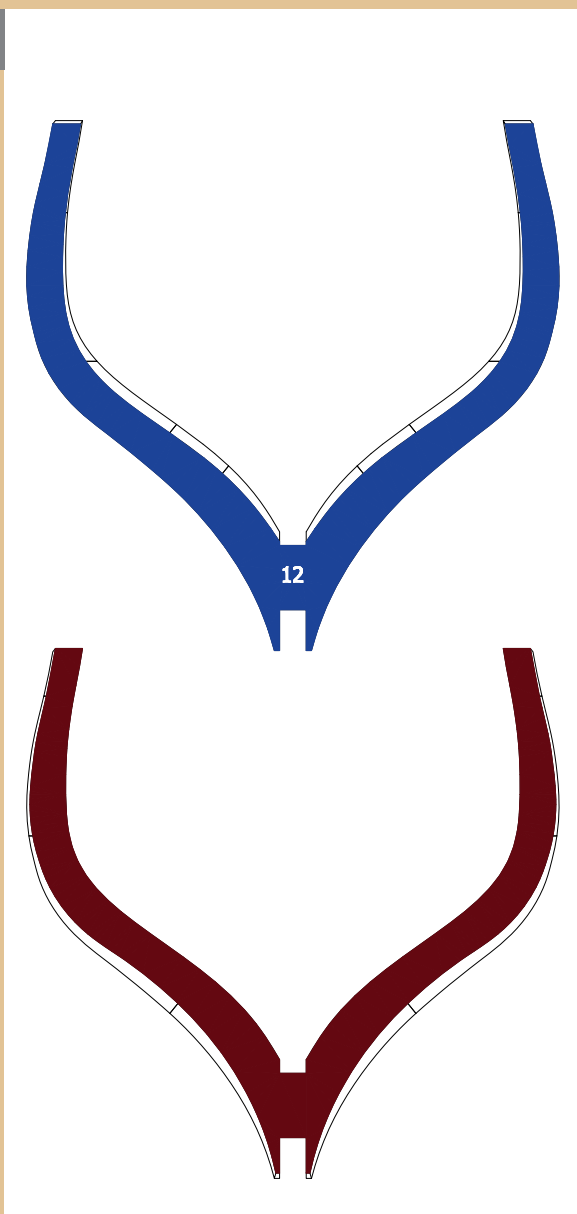
C Drawing of the frame with the beveled corner.

A



A Drawing of side view of the ship.

B1



B2

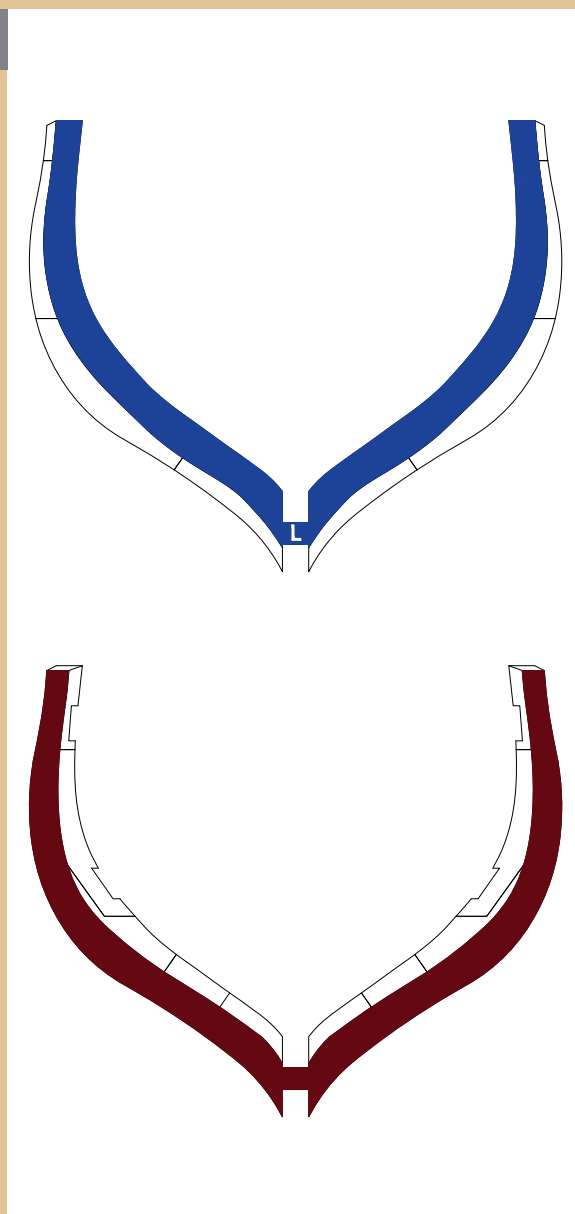


Figure A on the previous page is the drawing of the side view of the ship with the numbers and letters assigned to the frames.

General considerations:

- the main frame is marked with the **symbol #**
- from the main frame, **the frames that go to the bow are marked with letters from A to L**, while **those to - the stern are marked with numbers from 1 to 17**.
- **the frames towards the bow (in red) from the letter E to L** and **those towards the stern (in green) from number 7 to 17** are the frames to which the templates are to be applied to create the beveled corner.

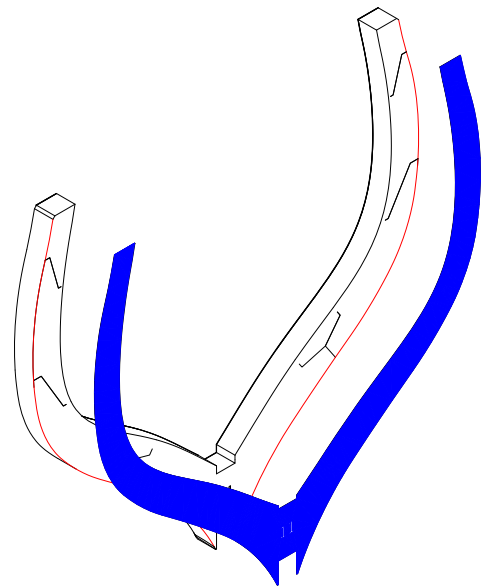
NOTE: All frames must be glued to the keel with the letters and numbers towards the bow.

In **figures B1 and B2** we have an example of frames on which to apply the two templates to be printed on an **A4** sheet scaled 1:1.

The blue template must always be applied on the side with the number or letter; the red template must always be applied on the other side. The important difference is that on the frames with numbers (from 7 to 17) the blue template must be glued following the outer edge of the frame, while the red template on the other side must follow the inner edge (see fig. B1). In the frames marked with letters (from E to L), instead, the blue template must be glued onto the inner edge of the frame, while the red one on the other side, onto the outer edge (see fig. B2).

A

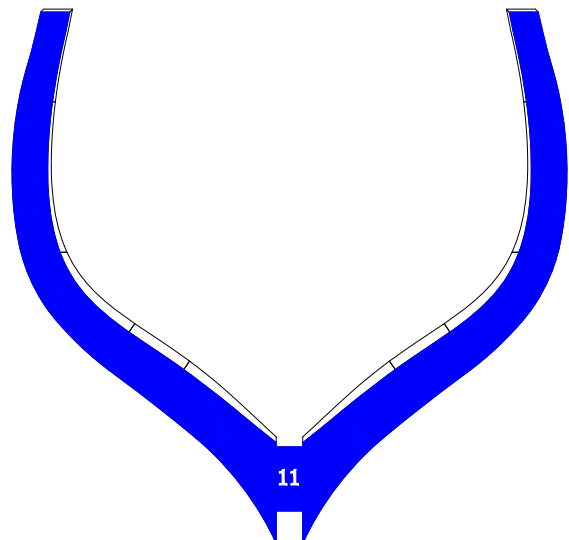
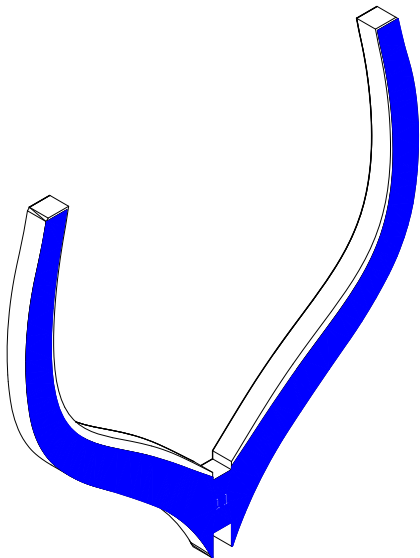
Example of how to glue the templates onto the frames marked with numbers



A

Print the template of frame 11 on an A4 sheet scaled 1:1. Cut out the templates (red and blue) and glue the blue template onto the part marked by the number 11 following the outer edge of the frame.

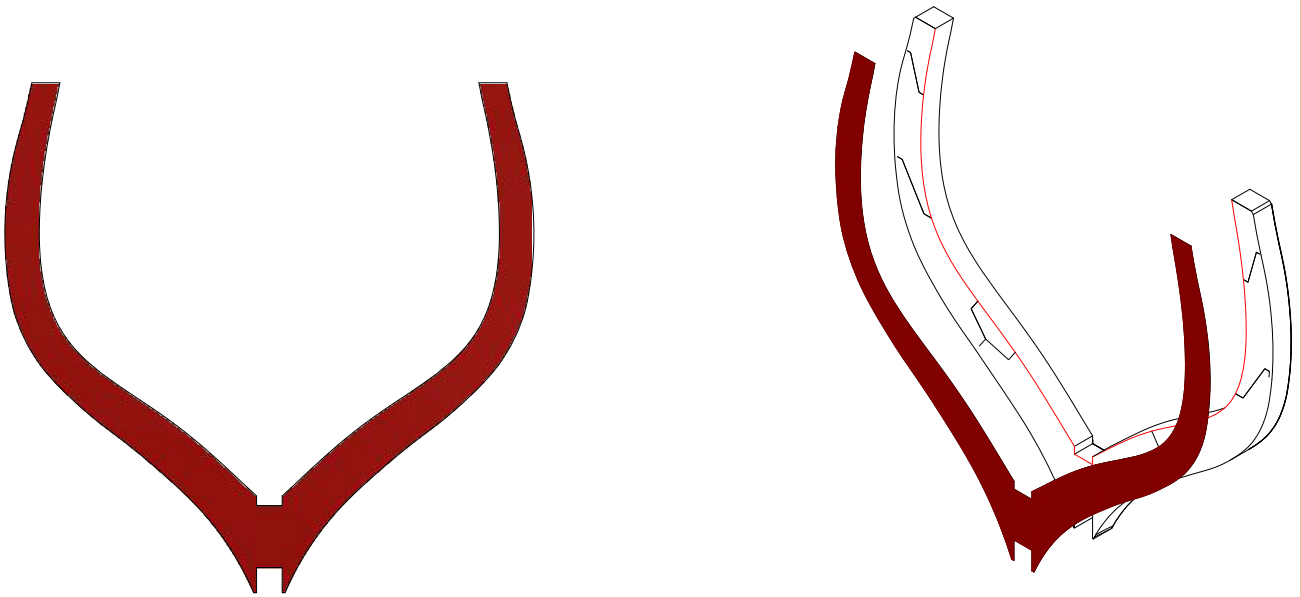
B



B

Blue template glued onto the frame on the side marked with a number.

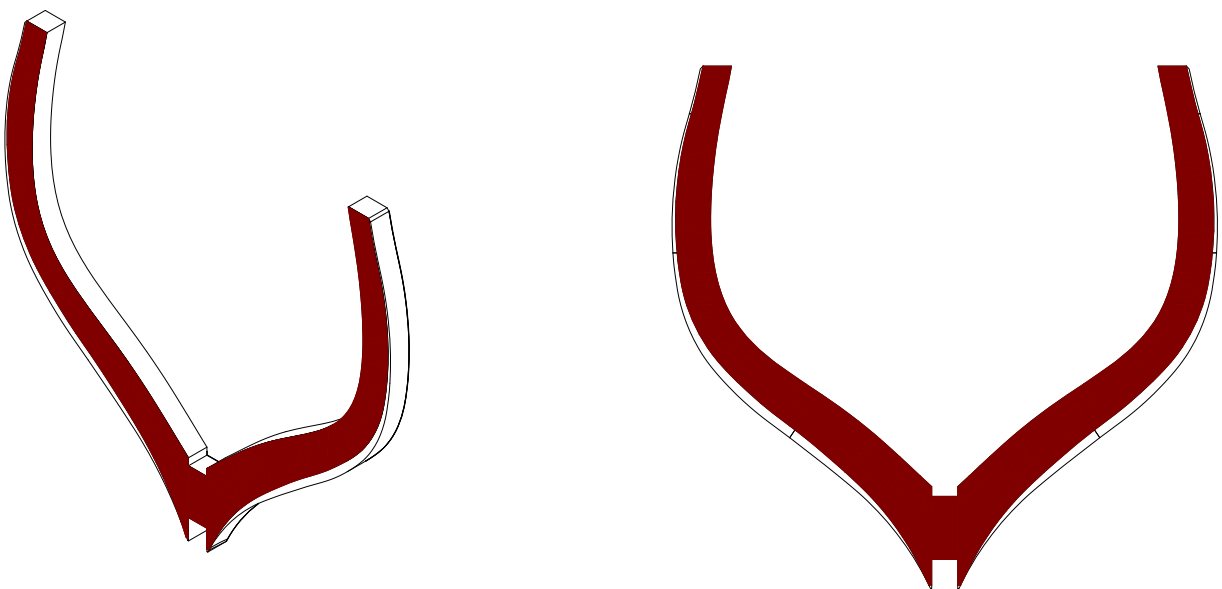
C



C

On the frames with numbers the red template must be glued following the inner edge of the other side.

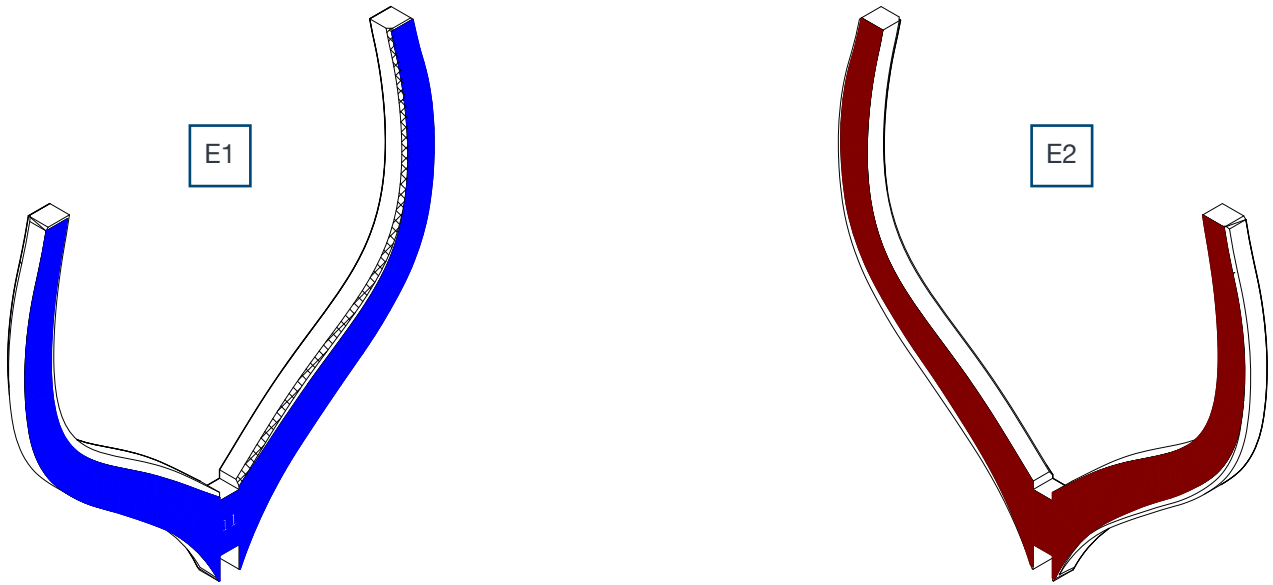
D



D

The red template glued onto frame 11.

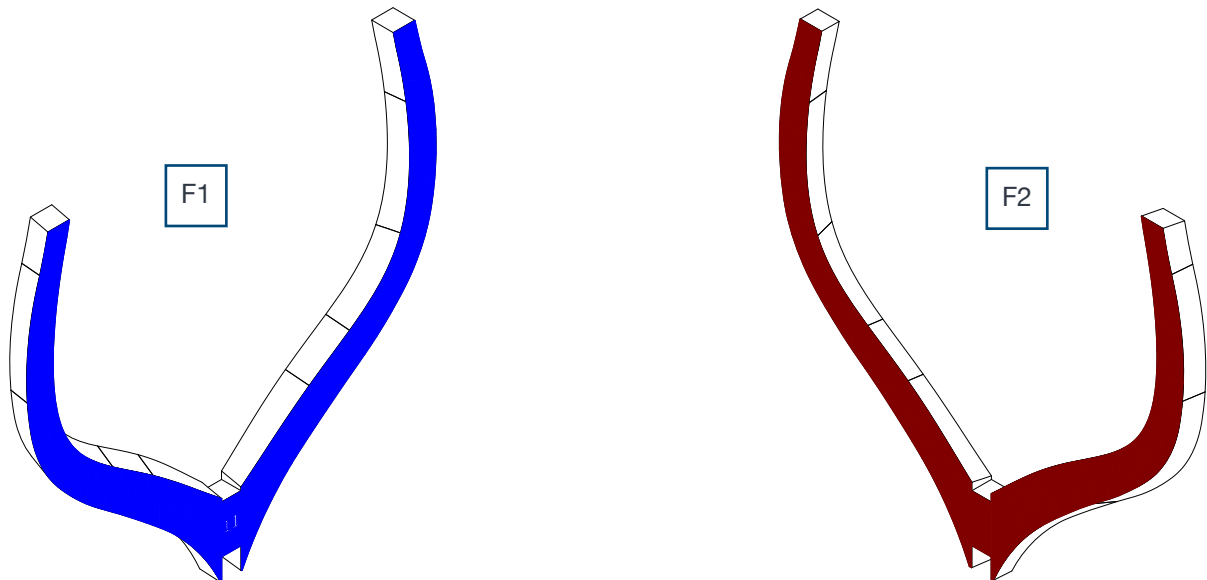
E



E

With the file begin to remove the outer corners of the frame from the outer corner of the blue template to the outer corner of the red template glued onto the other side (fig. E1). Then begin to remove the inner corners of the frame from the inner corner of the red template to the inner corner of the blue template glued onto the other side (fig. E2).

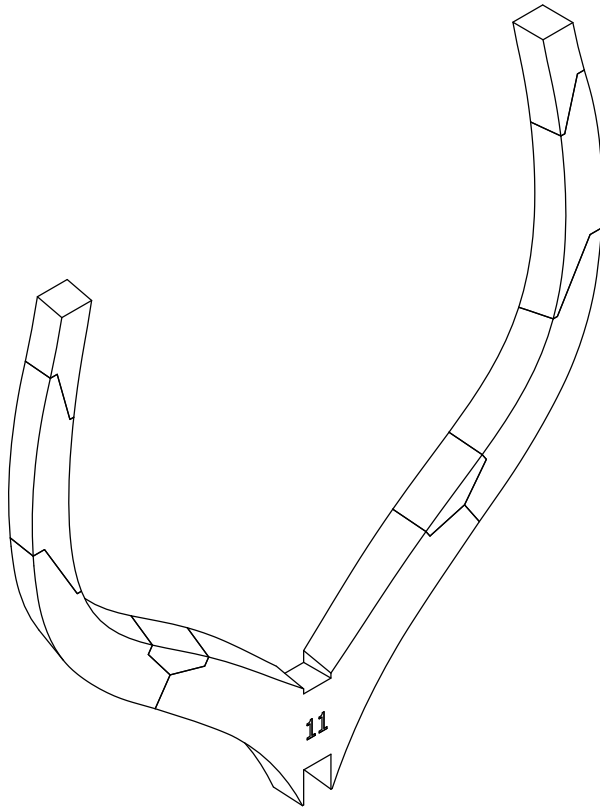
F



F

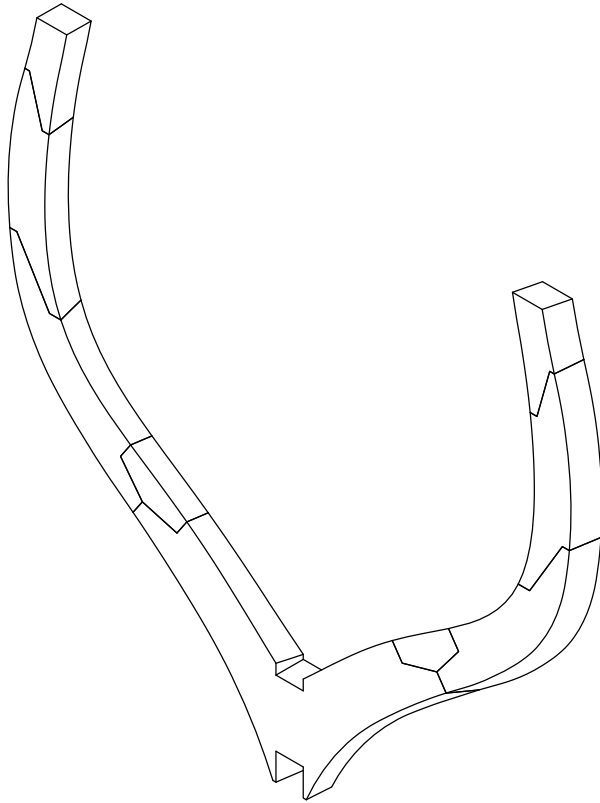
Gently finish the operation with an abrasive sponge until a smooth surface is obtained between the external and internal edges of the templates (figures F1 and F2).

G



G Frame 11 with the completed beveled edge (side with number)

H

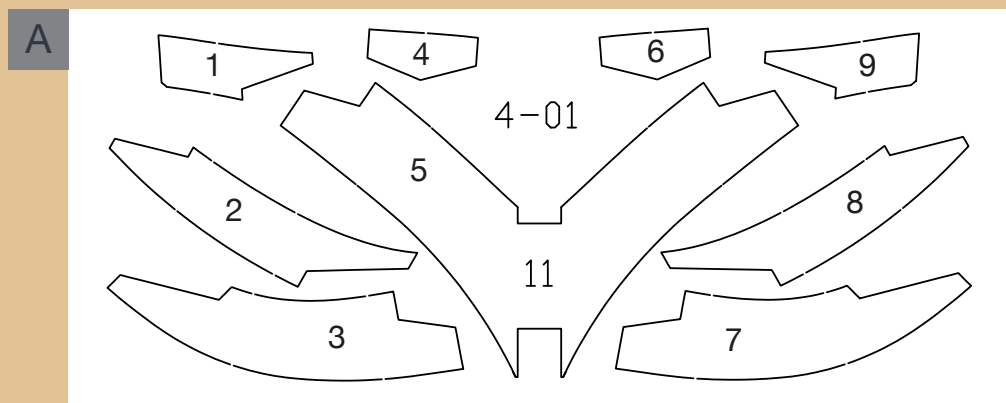


H Frame 11 with the completed beveled edge (opposite side without number)

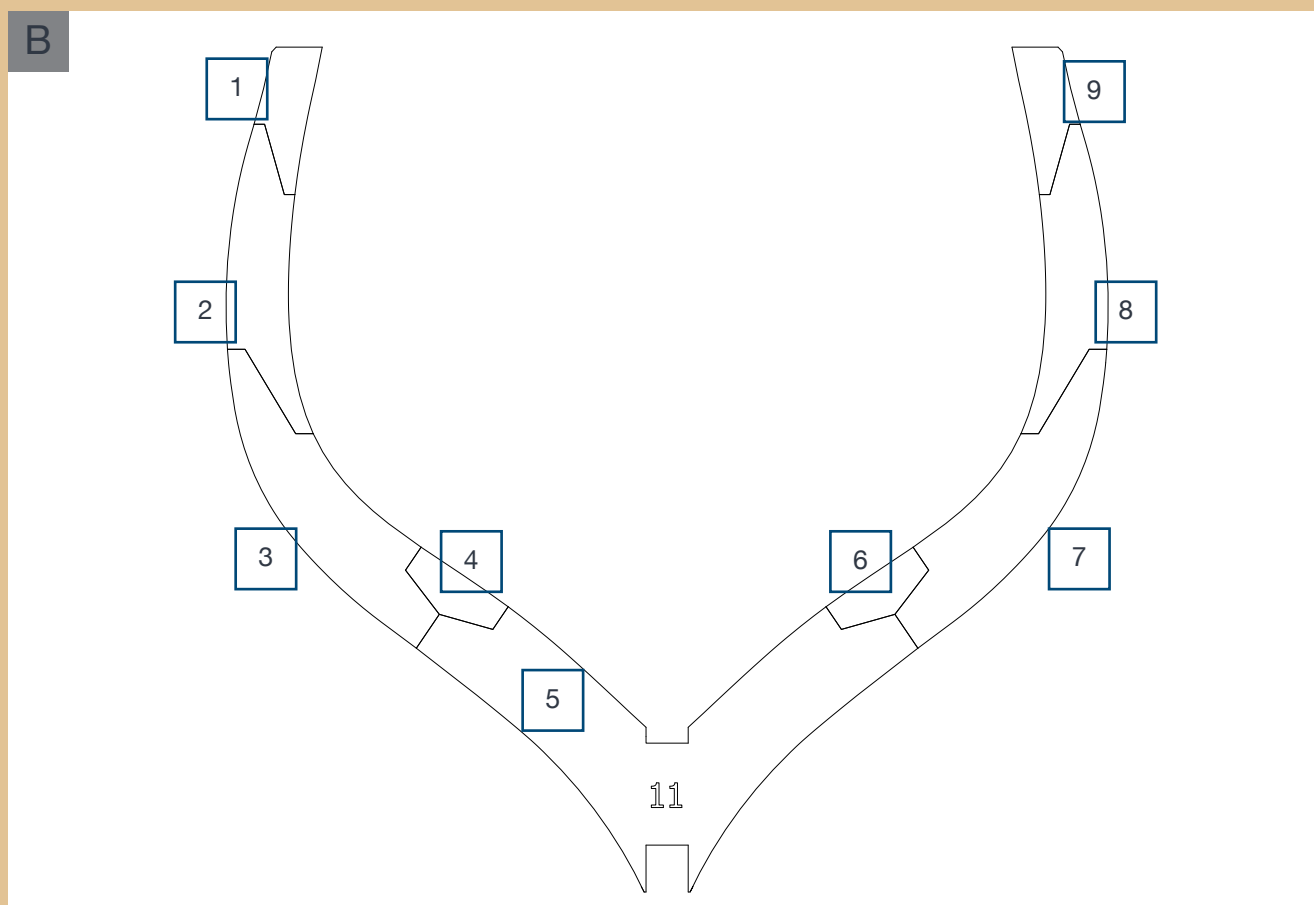
PHASE 29

Frame 11

Print the template of frame 11 onto an A4 sheet scaled 1:1.



A Drawing of tablet 4-01



B Print the template of frame 11 on an A4 sheet scaled 1:1. In Figure B the numbers of the pieces of tablet 4-01 are marked on the template to give you the right gluing sequence of the frame.

1



1

Frame 11
tablet 4-01.

2



2

Glue the pieces of the frame and before the glue dries, superimpose it onto the template scaled 1:1 to check the correct course of the frame.

3



3

Frame 11 completed.

4



4

Cut out the scaled 1:1 templates you printed onto an A4 sheet. Glue the blue template onto the part marked with a number following the outer edge of the frame.

5



5

Turn the frame over and glue on the red template following the inside edge of the frame.

6



6

Gently file the inner part of the frame from the inner edge of the blue template to the inner edge of the red template on the other side of the frame.

7



7

Gently file the outer part of the frame from the outer edge of the red template to the outer edge of the blue template on the other side of the frame.

8



8

Remove the blue template from the frame on the side marked with a number.

9



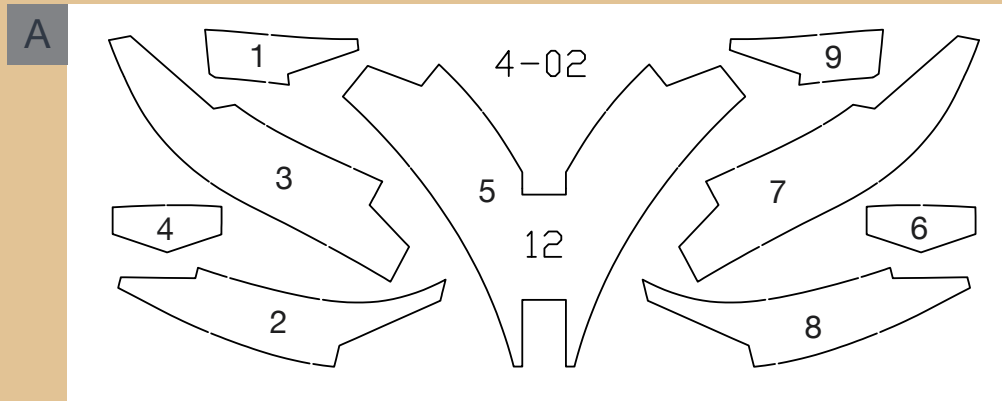
9

Remove the red template from the other side of the frame.

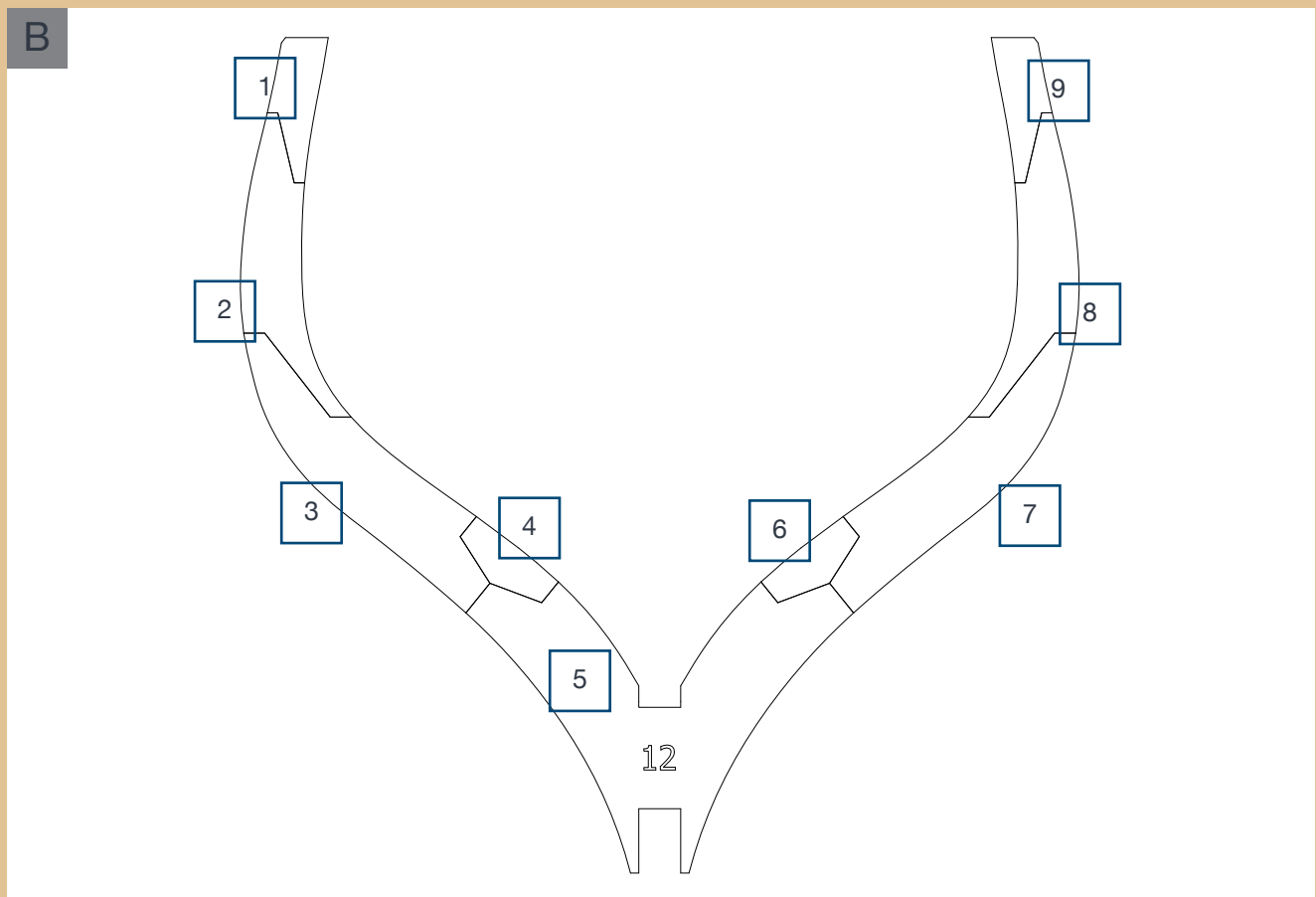
PHASE 30

Frame 12

Print the template of frame 12 scaled 1:1 onto an A4 sheet.



A Drawing of tablet 4-02



B Print the template of frame 12 scaled 1:1 onto an A4 sheet. In Figure B the numbers of the pieces of tablet 4-02 are marked on the template to give you the right gluing sequence of the frame.

1



1

Frame 12
tablet 4-02.

2



2

Glue the pieces of the frame and, before the glue dries, superimpose it onto the template scaled 1:1 to check the correct course of the frame.

3



3

Frame 12 completed.

4



4

Cut out the scaled 1:1 templates you printed onto an A4 sheet.
Glue the blue template onto the side marked by the letter following the outer edge of the frame.

5



5

Turn the frame over and glue the red template following the inside edge of the frame.

6



6

Gently file the inner part of the frame from the inner edge of the blue template to the inner edge of the red template on the other side of the frame.

7



7

Gently file the outer part of the frame from the outer edge of the red template to the outer edge of the blue template on the other side of the frame.

8



8

Remove the blue template from the frame on the side marked with a number.

9



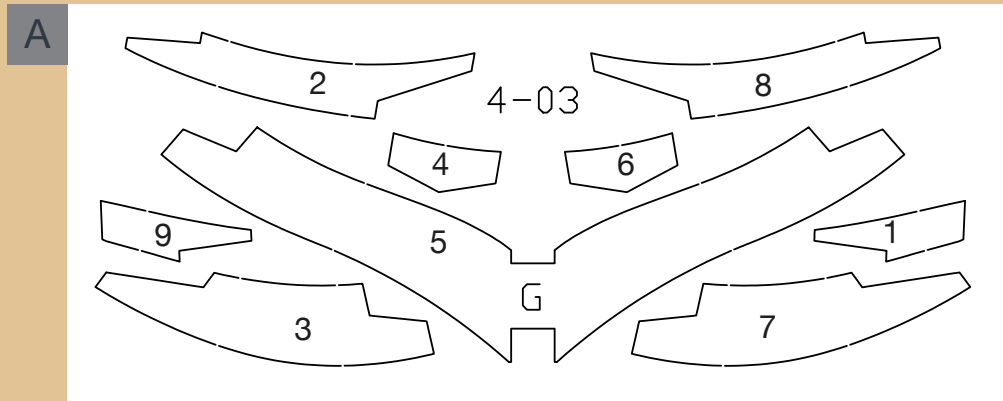
9

Remove the red template from the other side of the frame.

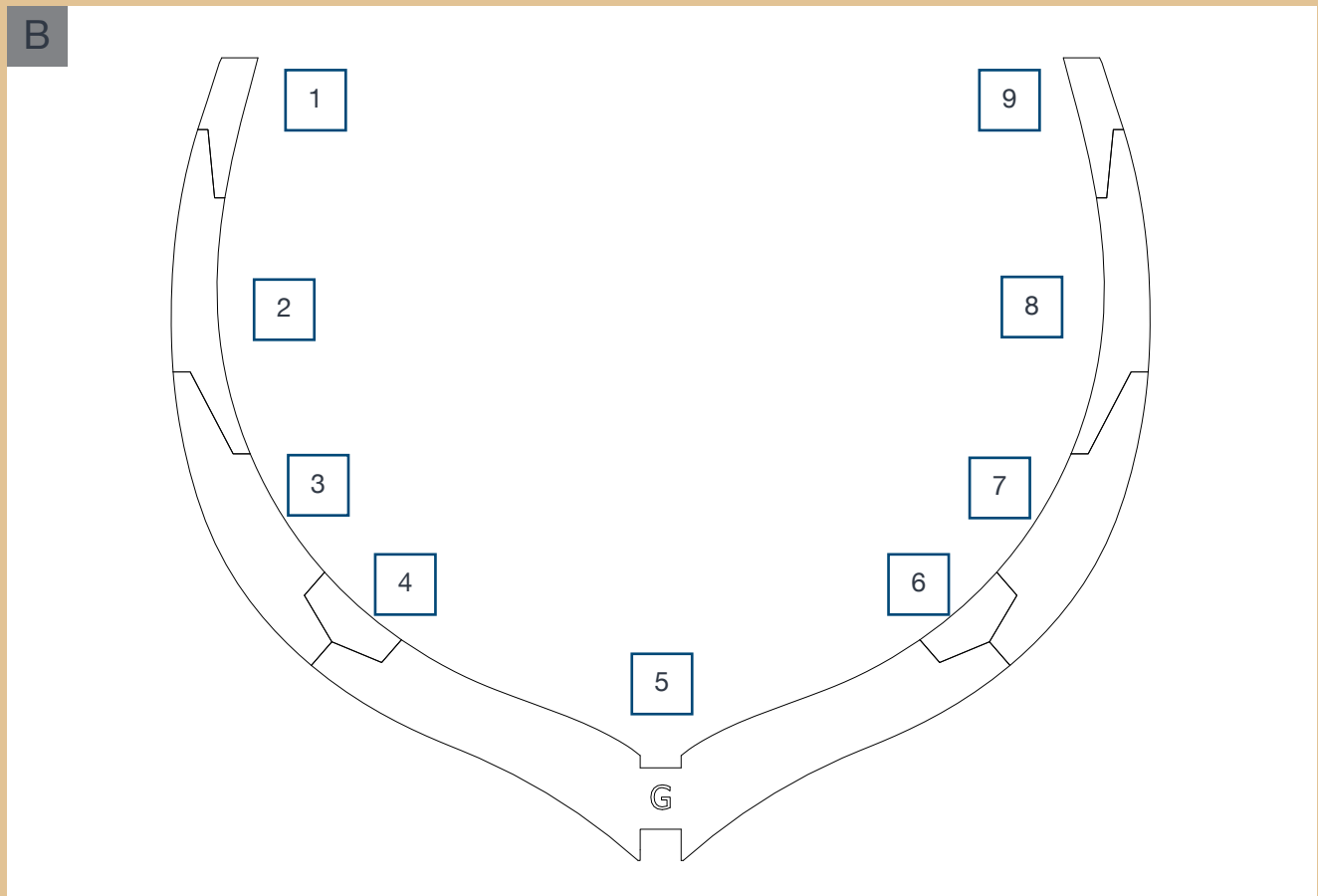
PHASE 31

Frame G

Print the template of frame G scaled 1:1 onto an A4 sheet.

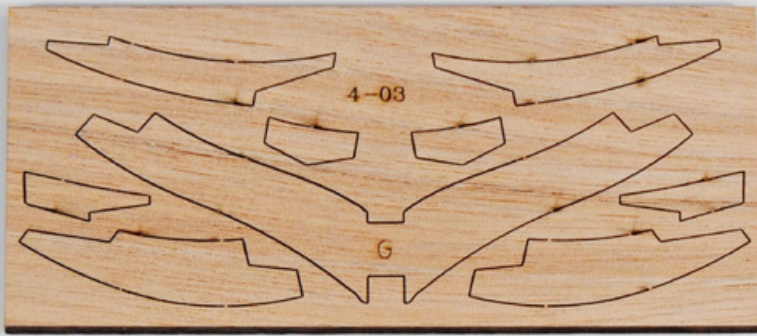


A Drawing of tablet 4-03



B Print the template of the frame G scaled 1:1 on an A4 sheet. In Figure B the numbers of the pieces of tablet 4-03 are marked on the template to give you the right gluing sequence of the frame.

1



1 Frame G
tablet 4-03.

2



2 Glue the pieces of the frame and, before the glue dries, superimpose it onto the template scaled 1:1 to check the correct course of the frame.

3



3 Frame G completed.

4



4

Cut out the scaled 1:1 templates you printed onto an A4 sheet.

Glue the blue frame onto the part marked with the letter following the inner edge of the frame.

5



5

Turn the frame over and glue the red template following the inside edge of the frame.

6



6

Gently file the outer part of the frame from the outer edge of the blue template to the outer edge of the red template on the other side of the frame.

7



7

Gently file the inner part of the frame from the inner edge of the red template to the inner edge of the blue template on the other side of the frame.

8



8

Remove the blue template from the frame on the side marked with the letter.

9



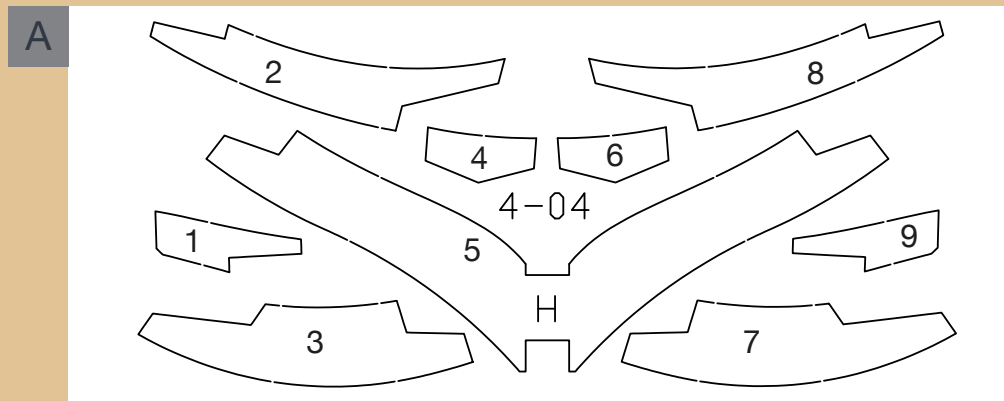
9

Remove the red template from the other side of the frame.

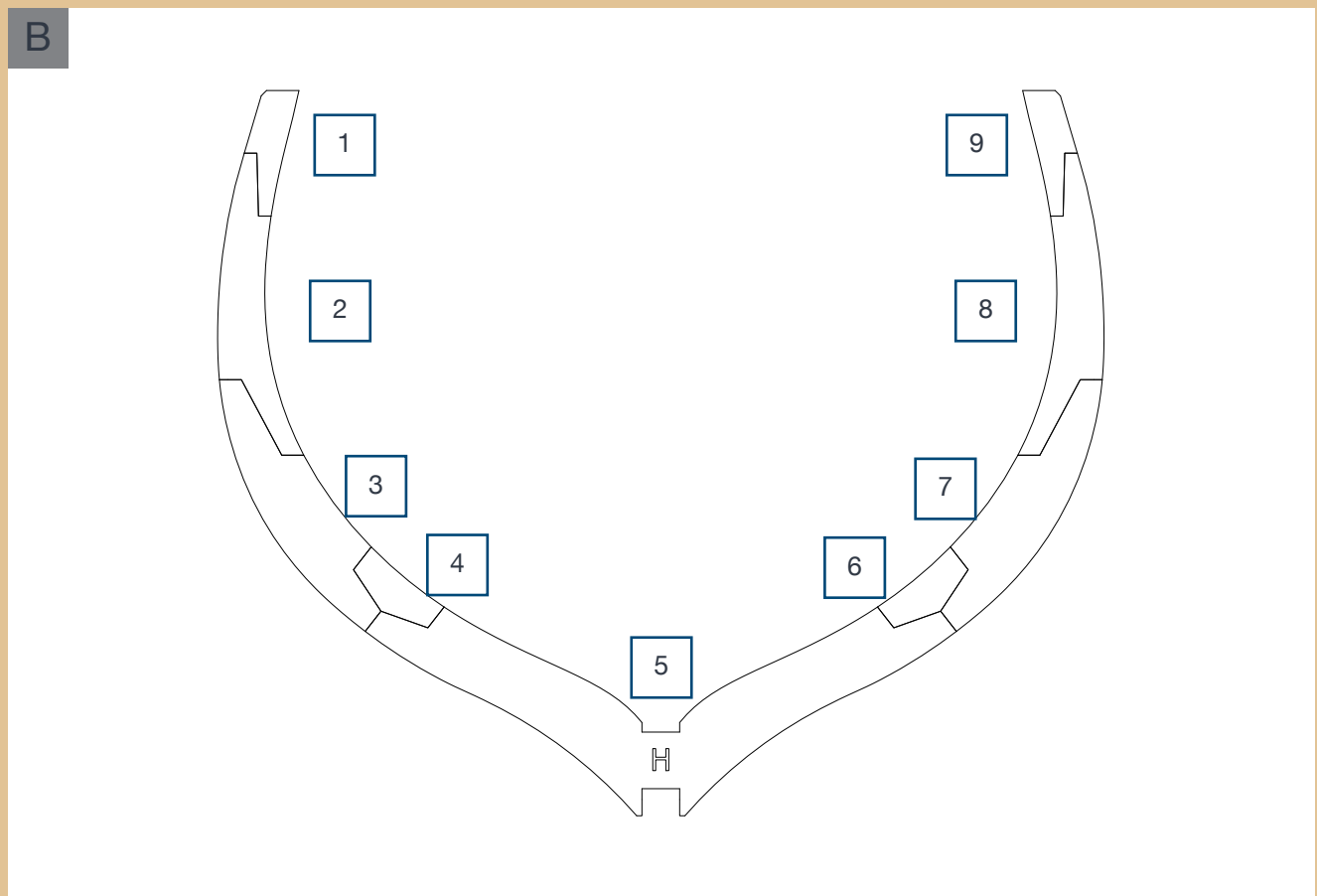
PHASE 32

Frame H

Print the template of frame H scaled 1:1 onto an A4 sheet.



A Drawing of tablet 4-04



B Print the template of frame H scaled 1:1 onto an A4 sheet. In Figure B the numbers of the pieces of tablet 4-04 are marked on the template to give you the right gluing sequence of the frame.

1



1

Frame H
tablet 4-04.

2



2

Glue the pieces of the frame and, before the glue dries, superimpose it onto the template scaled 1:1 to check the correct course of the frame.

3



3

Frame H completed.

4



4

Cut out the scaled 1:1 templates you printed onto an A4 sheet. Glue the blue template onto the part marked with the letter following the inner edge of the frame.

5



5

Turn the frame over and glue the red template following the outer edge of the frame.

6



6

Gently file the outer part of the frame from the outer edge of the blue template to the outer edge of the red template on the other side of the frame.

7



7

Gently file the inner part of the frame from the inner edge of the red template to the inner edge of the blue template on the other side of the frame.

8



8

Remove the blue template from the frame on the side marked by the letter.

9



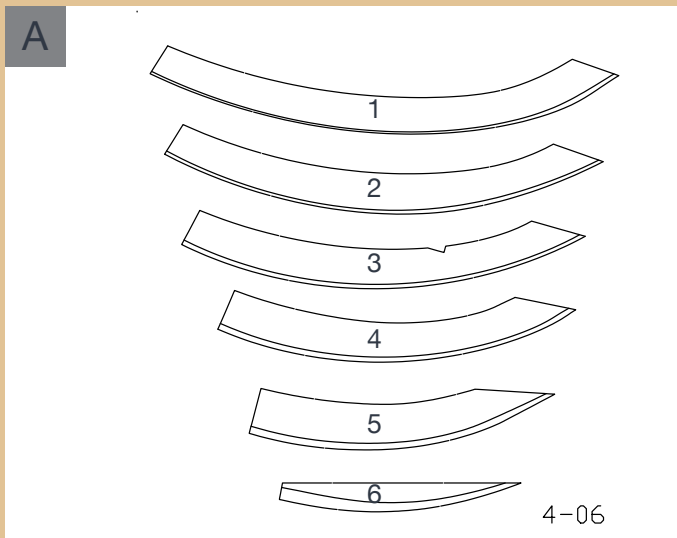
9

Remove the red template from the other side of the frame.

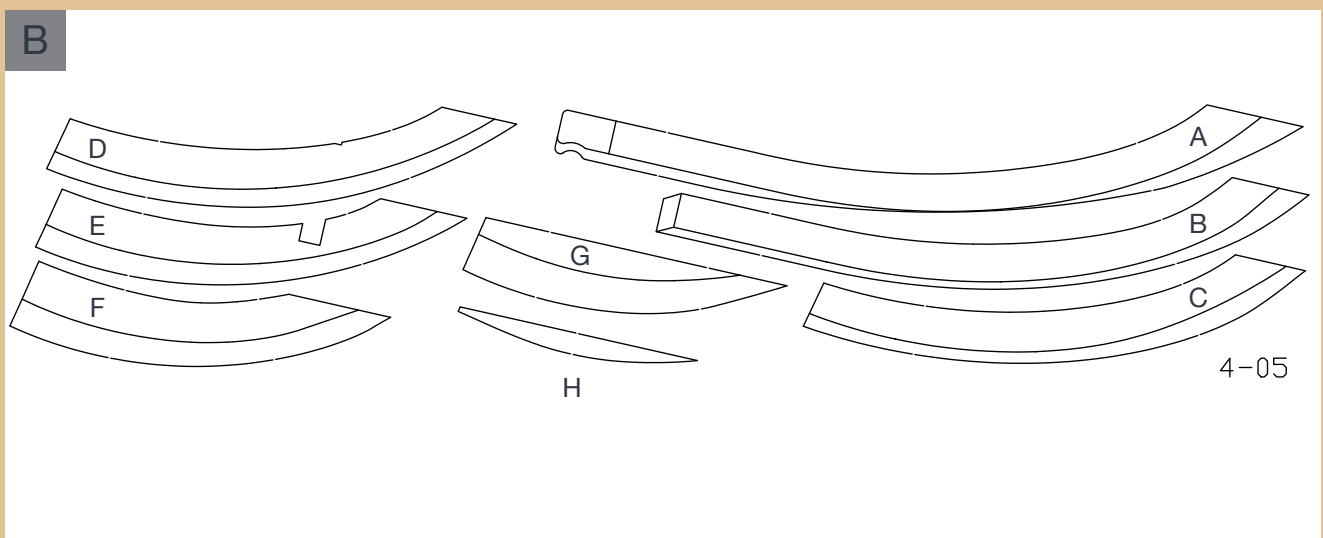
PHASE 33

Hawse Pieces 02

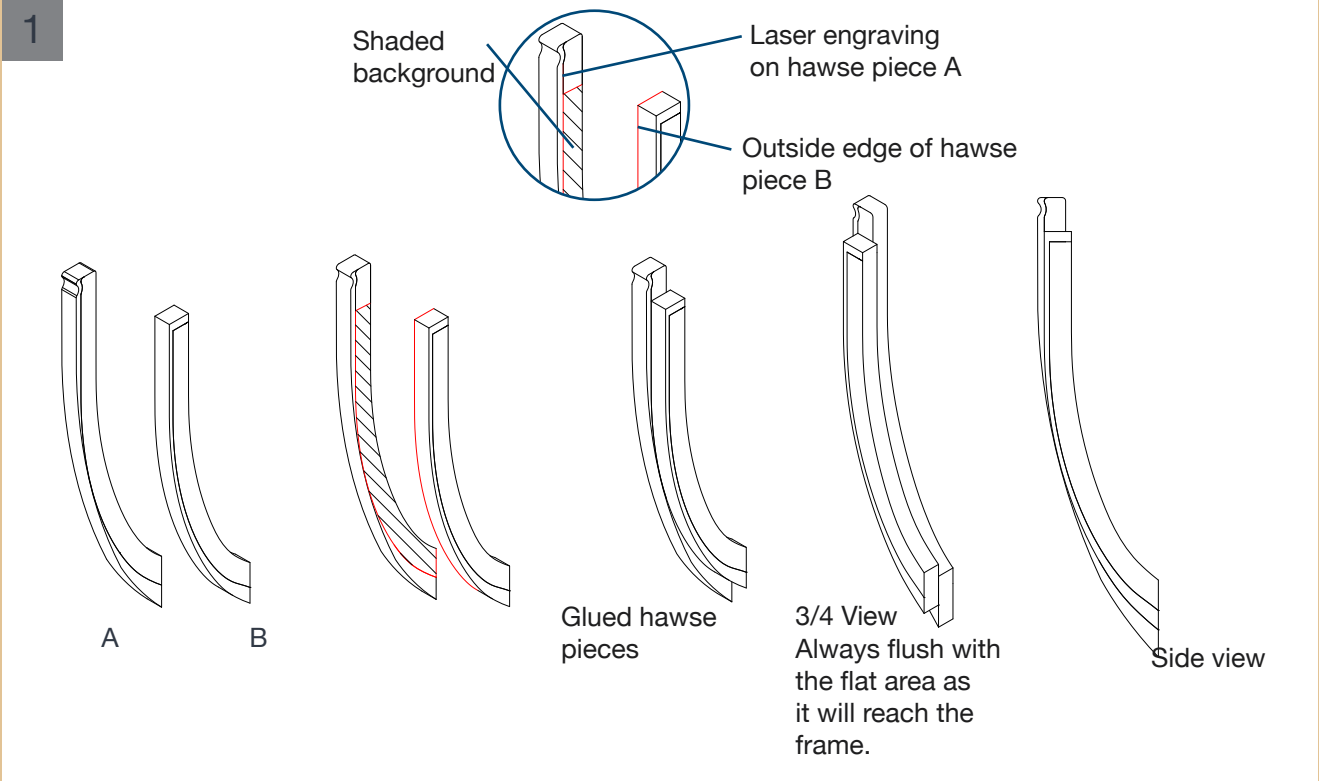
Print out the hawse pieces scaled 1:1 on an A4 sheet.



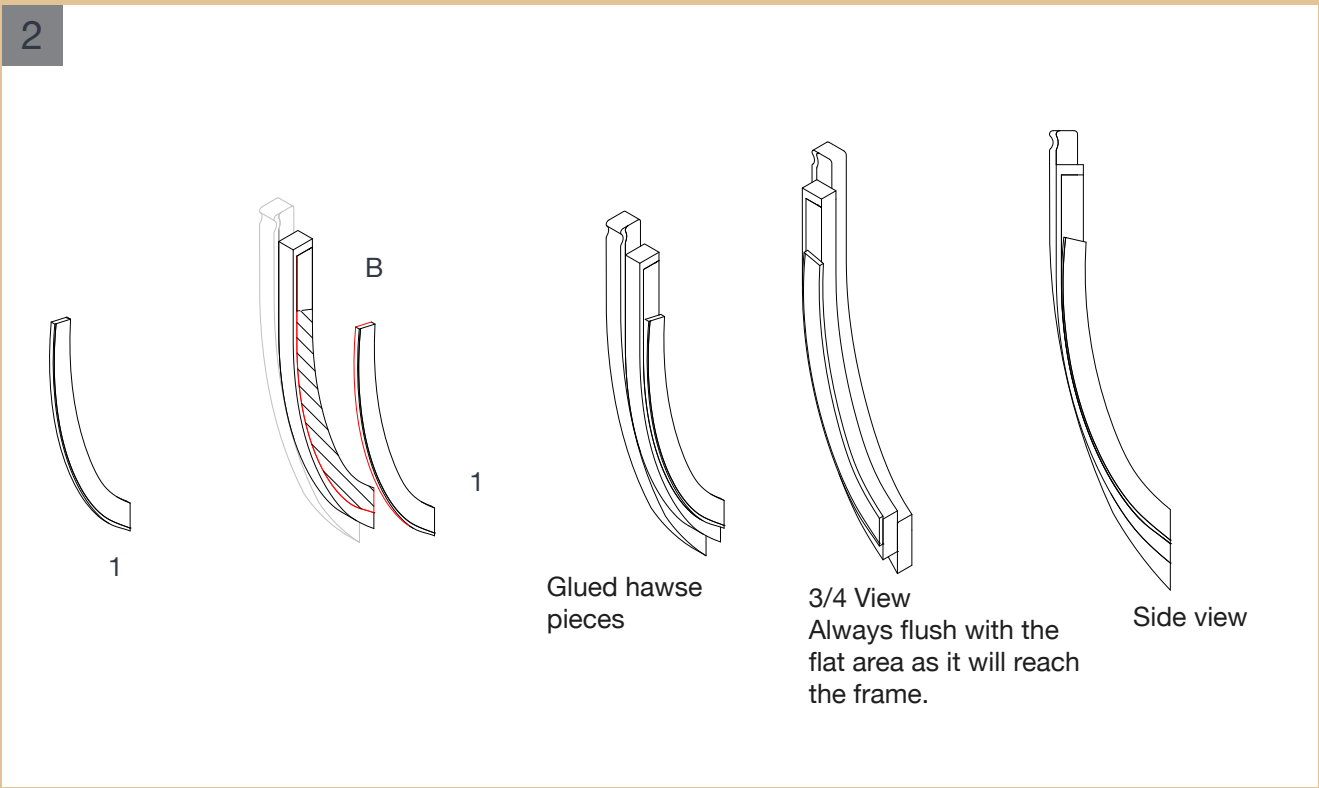
A Drawing of tablet 4-06.



B Drawing of tablet 4-05.

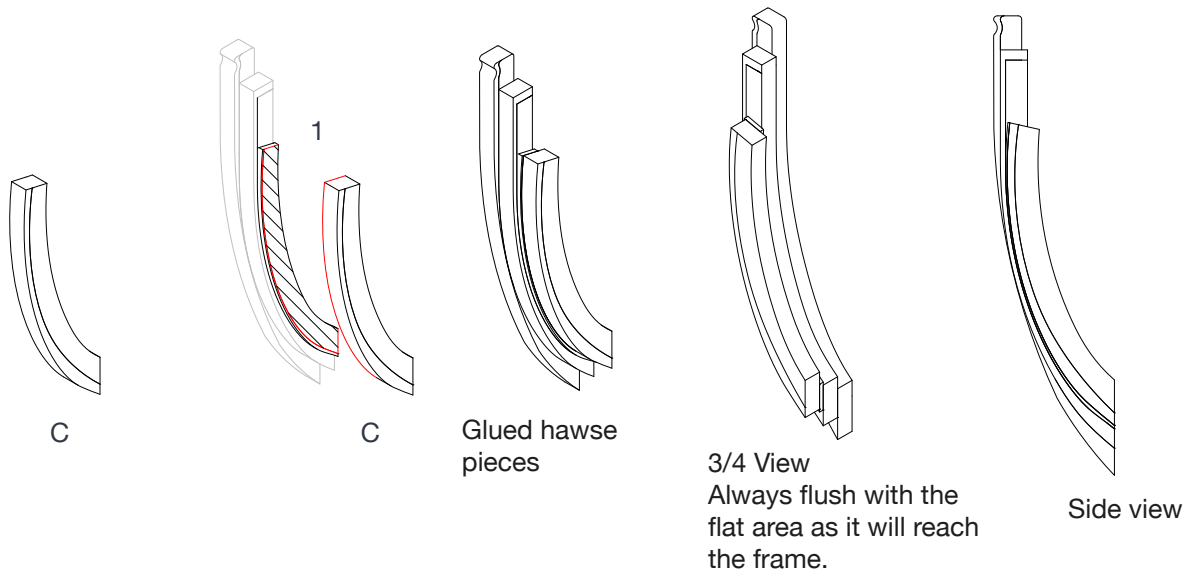


1 Remove pieces A and B from tablet 4-05. Apply glue on the shaded background of hawse piece A and glue on hawse piece B by matching the red edge of hawse piece B with the laser engraving (delimited by the shaded background in the drawing) of hawse piece A.



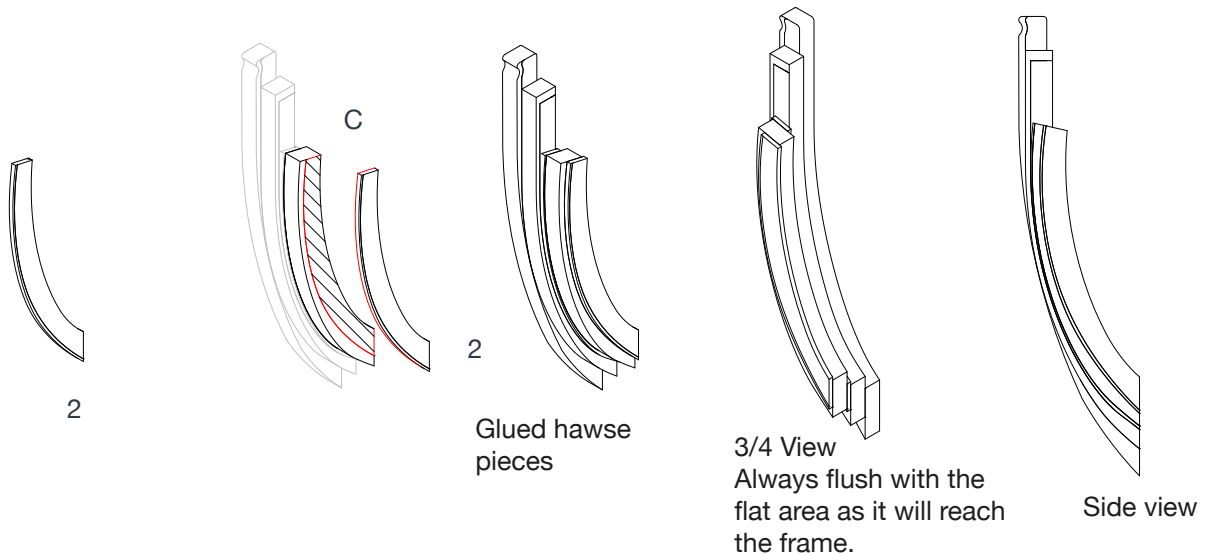
2 Remove piece 1 from tablet 4-06. Apply glue onto the shaded background of hawse piece B and glue on spacer 1 matching the red edge of spacer 1 with the laser engraving (delimited by the shaded background in the drawing) of hawse piece B.

3



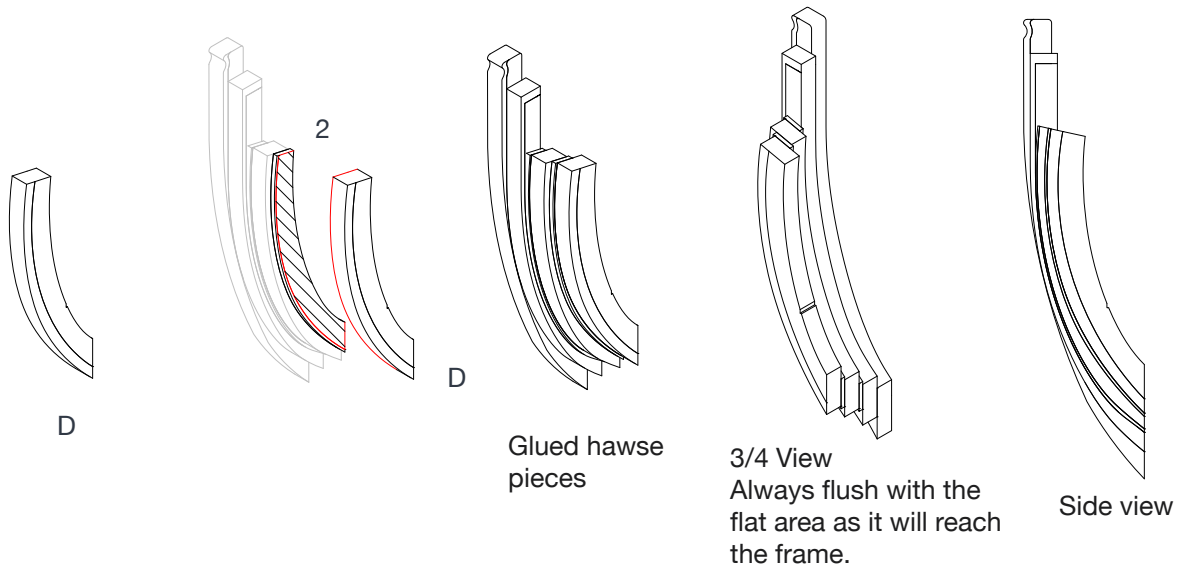
3 Remove piece C from tablet 4-05. Apply glue onto the shaded background of spacer 1 and glue hawse piece C matching the red edge of hawse piece C with the laser engraving (delimited by the shaded background in the drawing) of spacer 1.

4



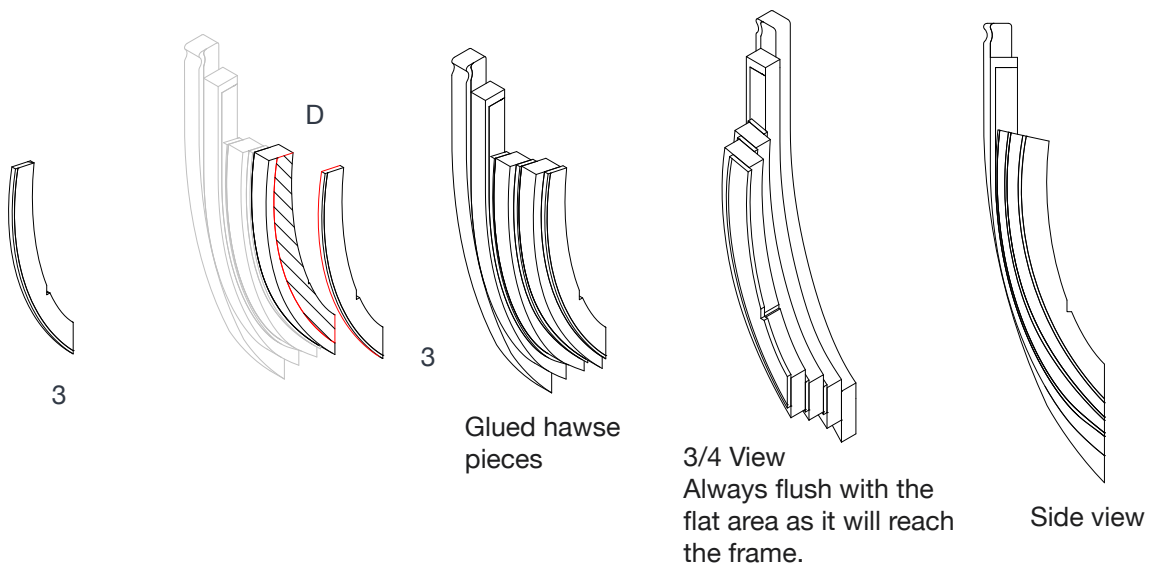
4 Remove piece 2 from tablet 4-06. Apply glue on shaded background of hawse piece C and glue in spacer 2 matching the red edge of spacer 2 with the laser engraving (delimited by the shaded background in the drawing) of hawse piece C.

5



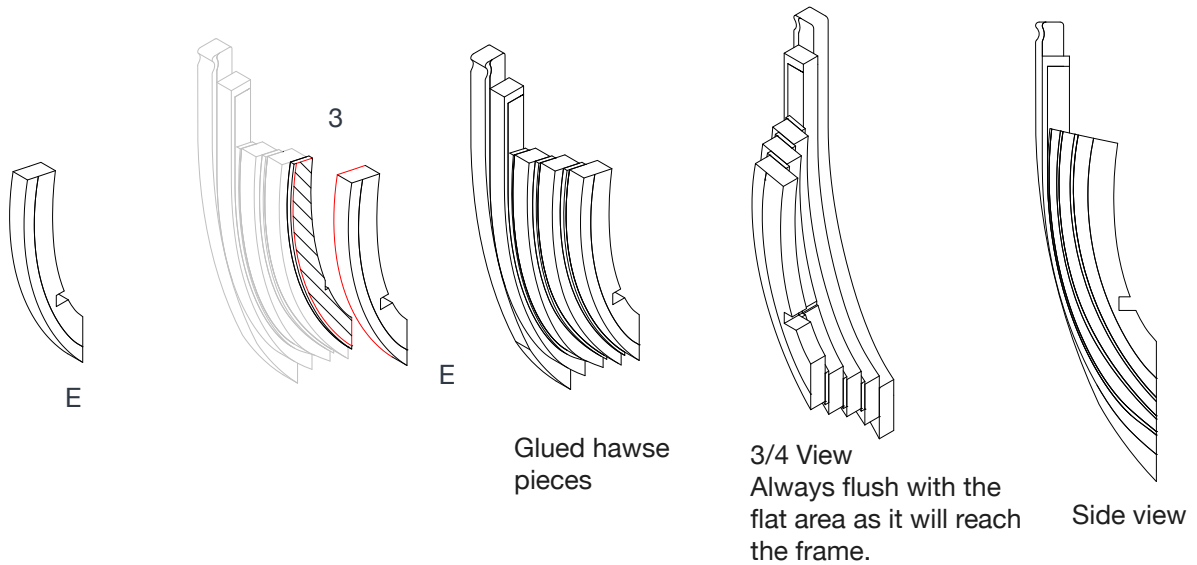
- 5 Remove piece D from tablet 4-05. Apply glue onto the shaded background of spacer 2 and glue hawse piece D matching the red edge of the hawse piece D with the laser engraving (delimited by the shaded background in the drawing) of spacer 2.

6



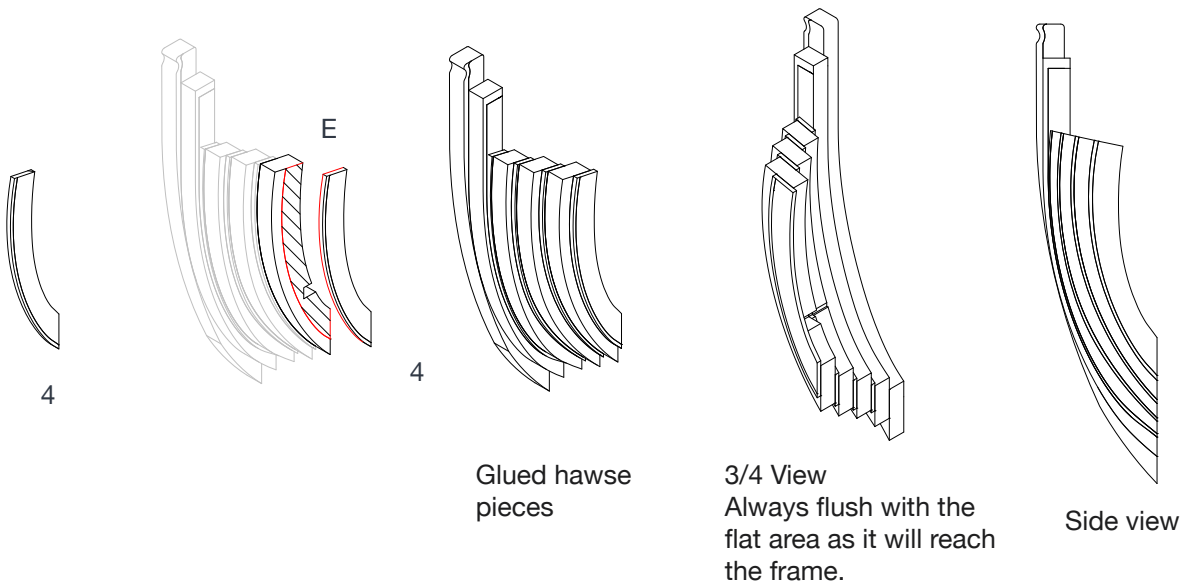
- 6 Remove piece 3 from tablet 4-06. Apply glue onto the shaded background of the hawse piece D and glue in spacer 3 matching the red edge of spacer 3 with the laser engraving (delimited by the shaded background in the drawing) of hawse piece D.

7



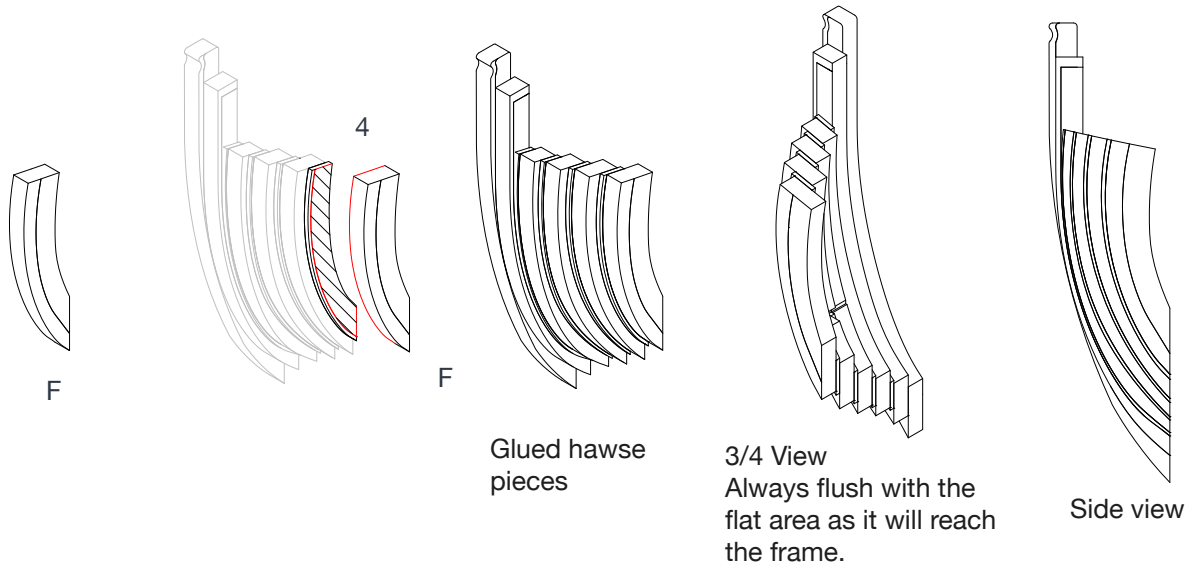
7 Remove piece E from tablet 4-05. Apply glue onto the shaded background of spacer 3 and glue hawse piece E matching the red edge (of hawse piece E) with the laser engraving (delimited by the shaded background in the drawing) of spacer 3.

8



8 Remove piece 4 from tablet 4-06. Apply glue on the shaded background of hawse piece E and glue in spacer 4 matching the red edge of spacer 4 with the laser engraving (delimited by the shaded background in the drawing) of hawse piece E.

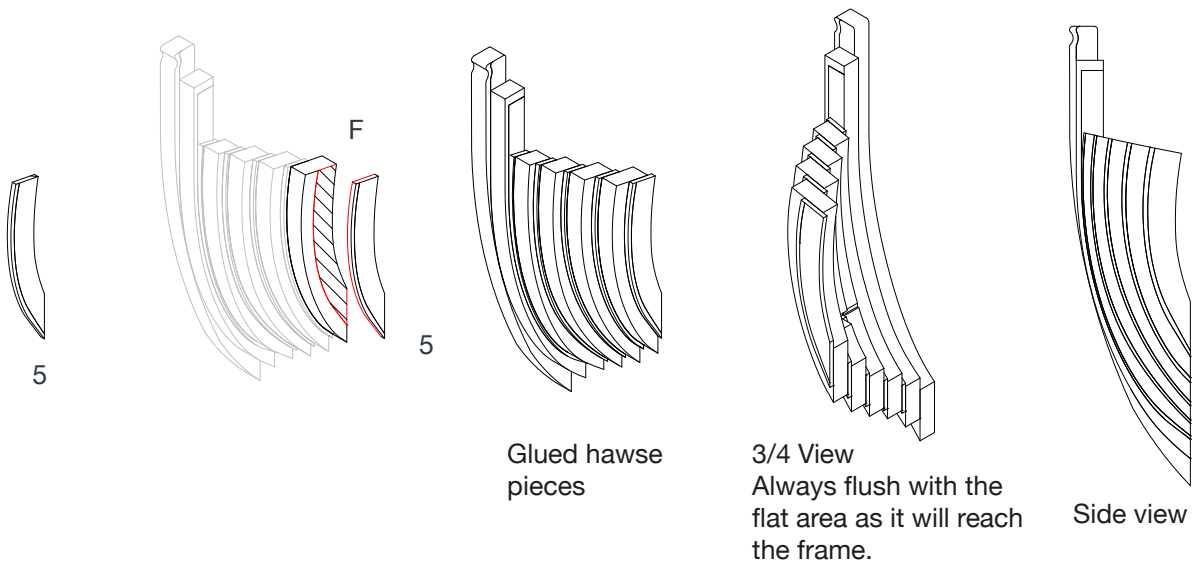
9



9

Remove piece F from tablet 4-05. Apply glue onto the shaded background of spacer 4 and glue on hawse piece F by matching the red edge of the hawse piece F with the laser engraving (delimited by the shaded background in the drawing) of spacer 4.

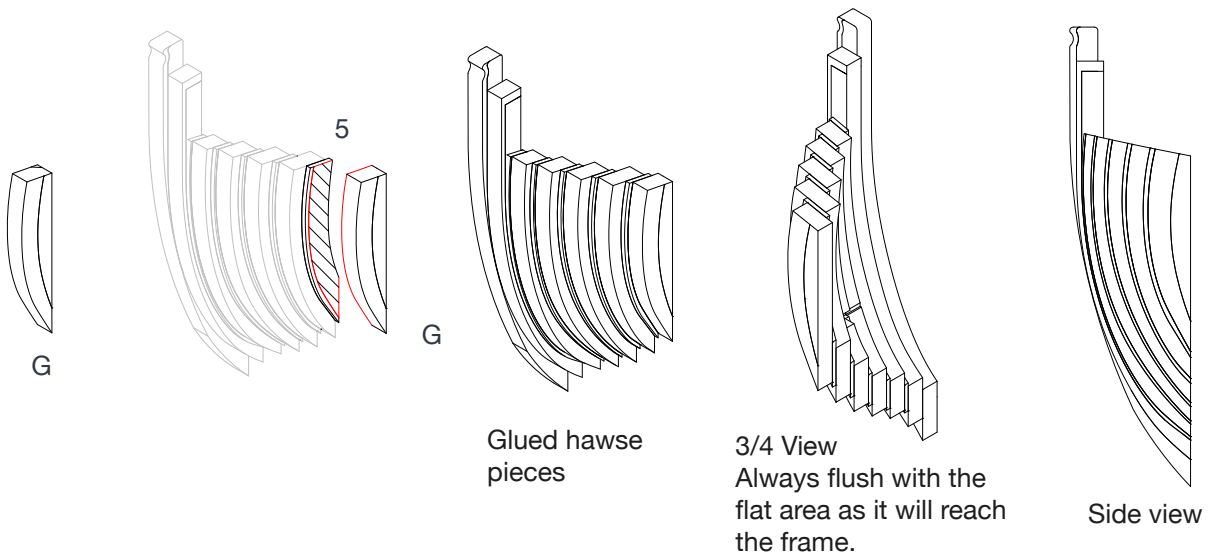
10



10

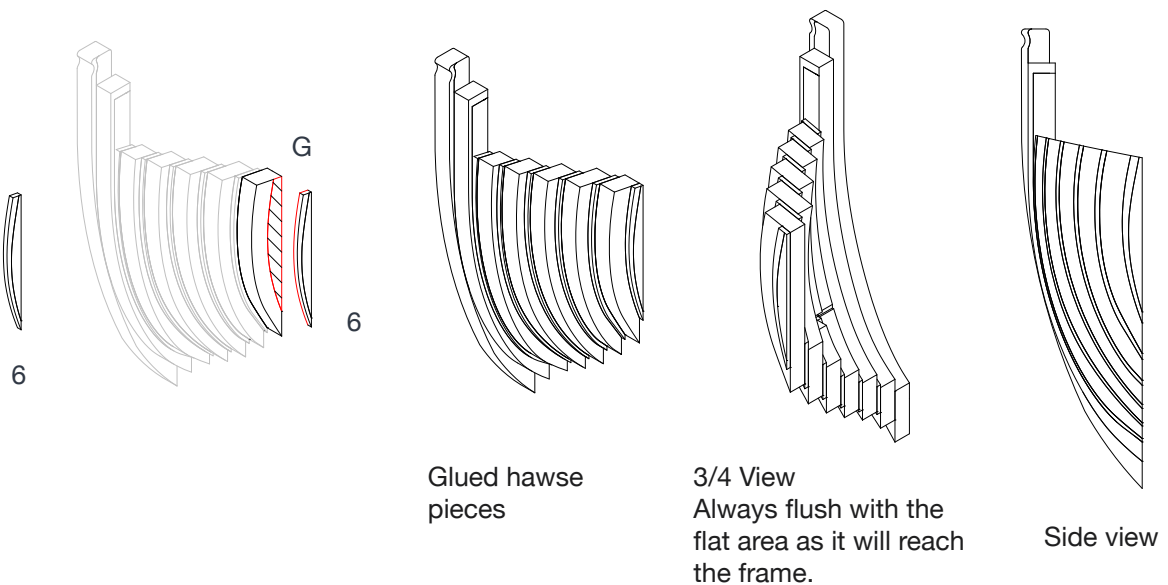
Remove piece 5 from tablet 4-06. Apply glue onto the shaded background of the hawse piece F and glue spacer 5 matching the red edge of spacer 5 with the laser engraving (delimited by the shaded background in the drawing) of hawse piece F.

11



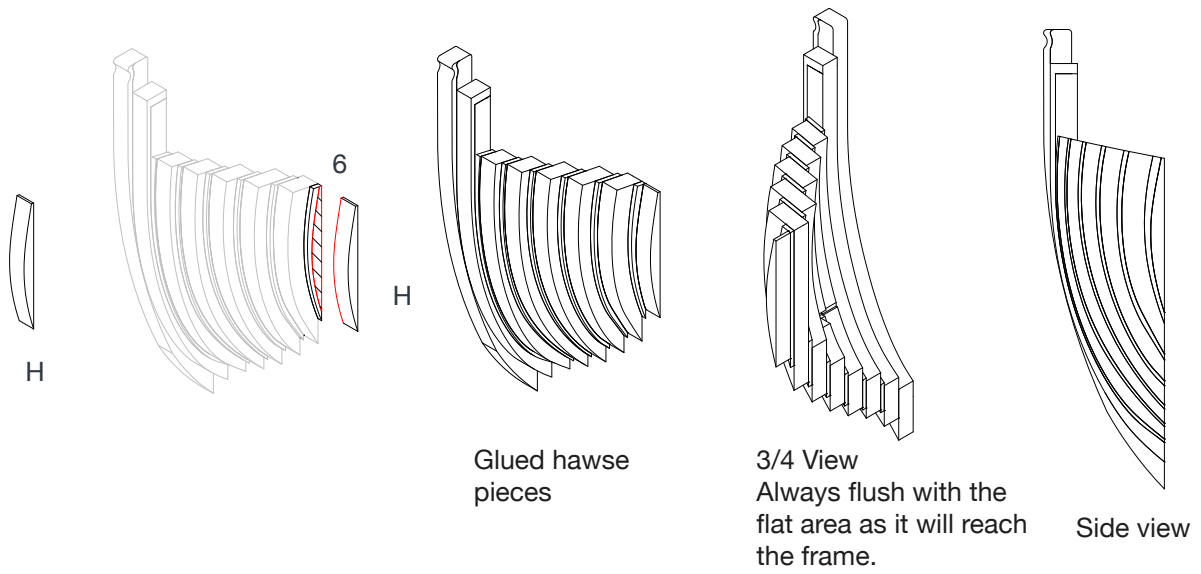
11 Remove piece G from tablet 4-05. Apply glue onto the shaded background of spacer 5 and glue on hawse piece G by matching the red edge of the hawse piece G with the laser engraving (delimited by the shaded background in the drawing) of spacer 5.

12



12 Remove piece 6 from tablet 4-06. Apply glue on the shaded background of hawse pieces and glue spacer 6 matching the red edge of spacer 6 with the laser engraving (delimited by the shaded background in the drawing) of hawse piece G.

13



13 Remove piece H from tablet 4-05. Apply glue onto the shaded background of spacer 6 and glue hawse piece H matching the red edge of hawse piece H with the laser engraving (delimited by the shaded background in the drawing) of spacer 6.

14



14 Hawse piece front view

15



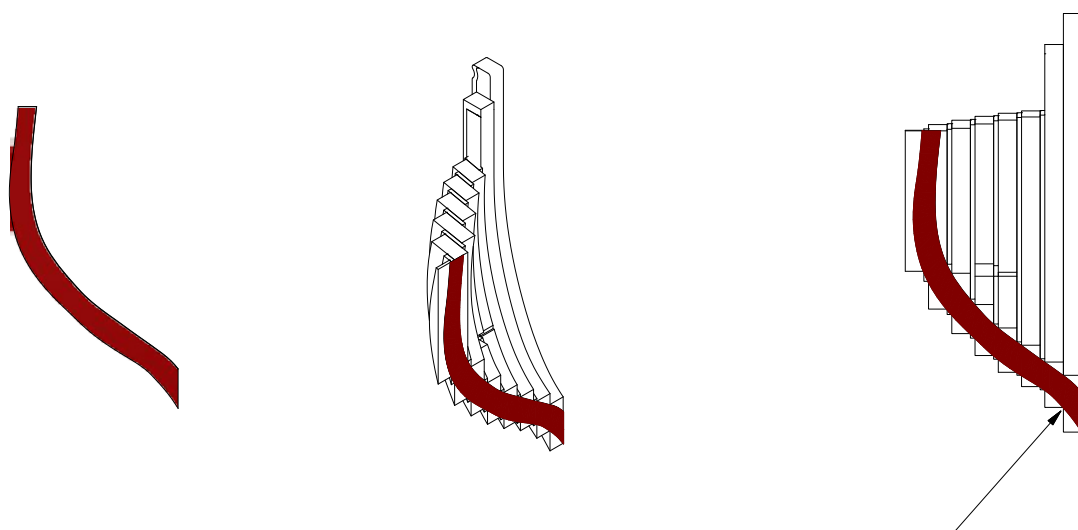
15 Hawse piece rear view

16



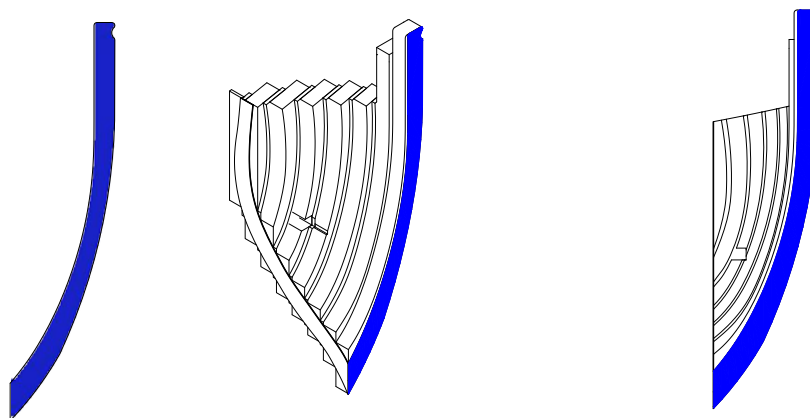
16 Hawse piece side view

17



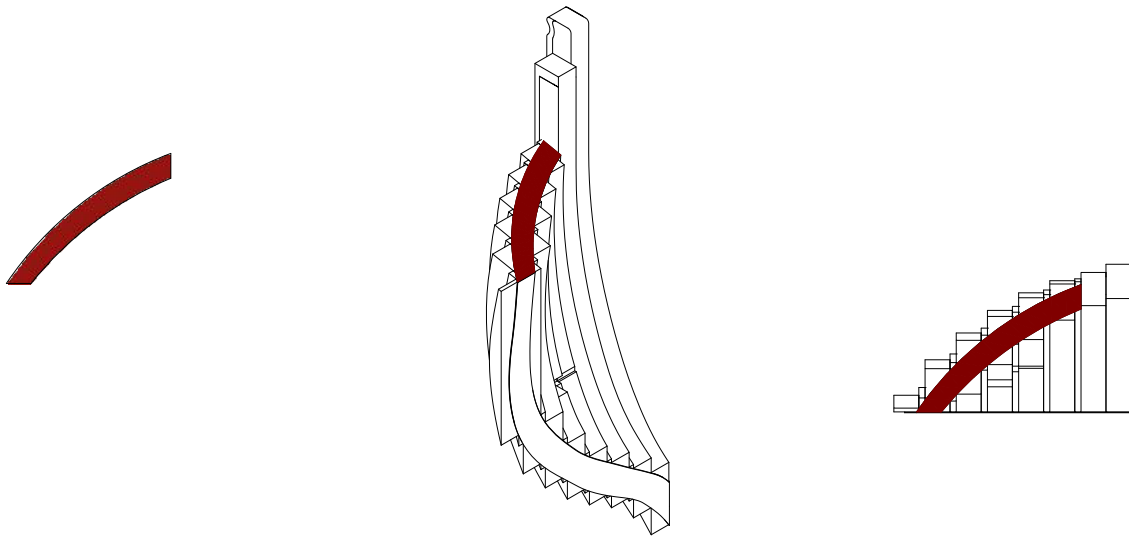
17 Cut out the red template of the side of frame L scaled 1:1 from the A4 sheet that you printed and apply it as shown.

18



18 Cut out the blue template of the side of the keel scaled 1:1 from the A4 sheet that you printed and apply it as shown.

19



19 Cut out the red template of the top side scaled 1:1 from the A4 sheet you printed and apply it as shown.

20



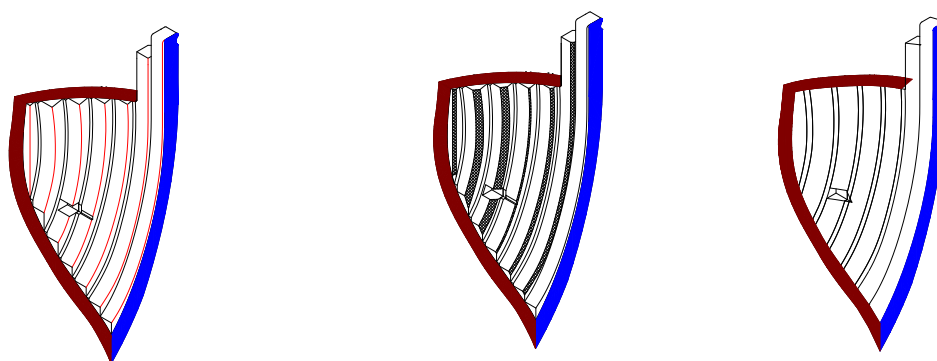
20 With a file begin to smooth the corners highlighted in red in the drawing.

21



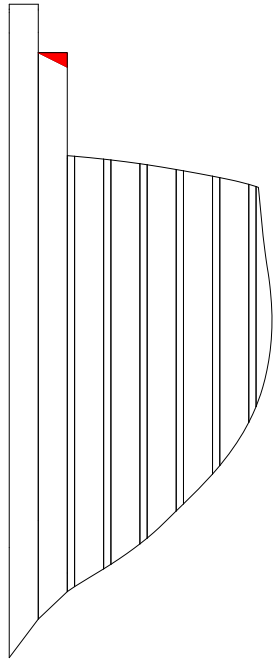
21 Outer side of completed hawse piece.

22



22 With a file start to smooth the corners highlighted in red in the drawing, until the surface is completely smooth. Once completed, the edges must coincide with the templates.

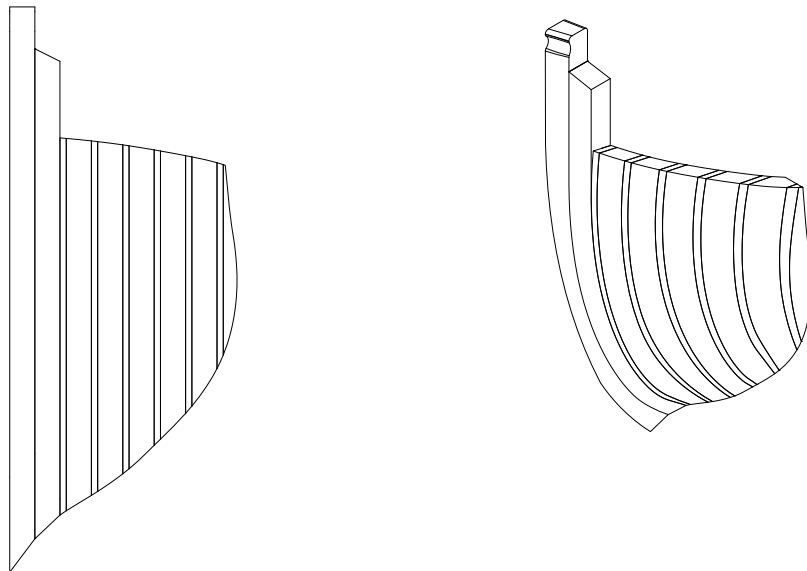
23



23

Remove the corner marked in red (see marking on hawse piece B).

24



24

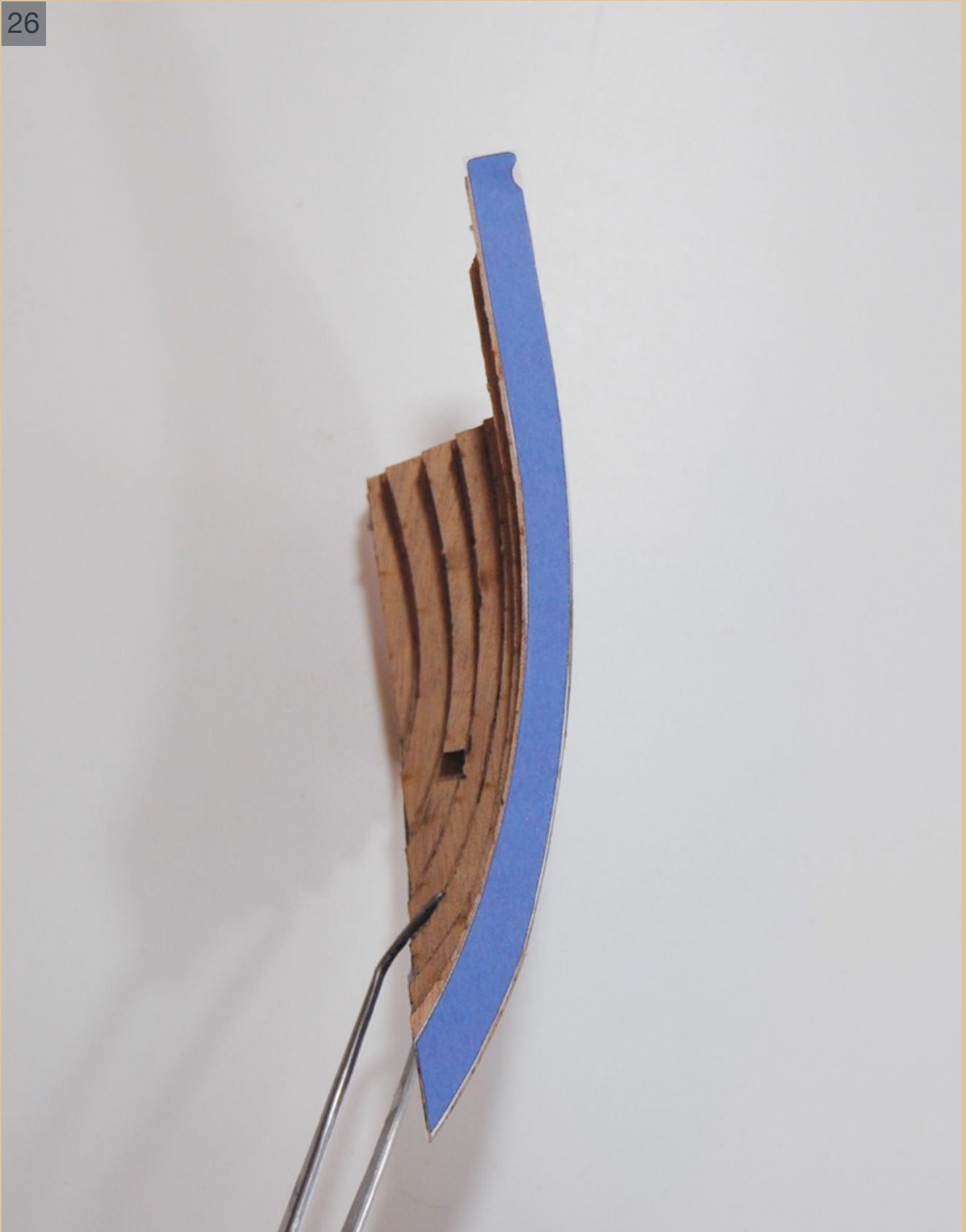
Completed hawse piece after removing templates.

25



25 Hawse piece with template frame L side.

26



26 Hawse piece with template keel side.

27



27 Completed hawse piece rear view.

28



28 Completed hawse piece side view keel side.

29



29 Completed hawse piece side view frame L.

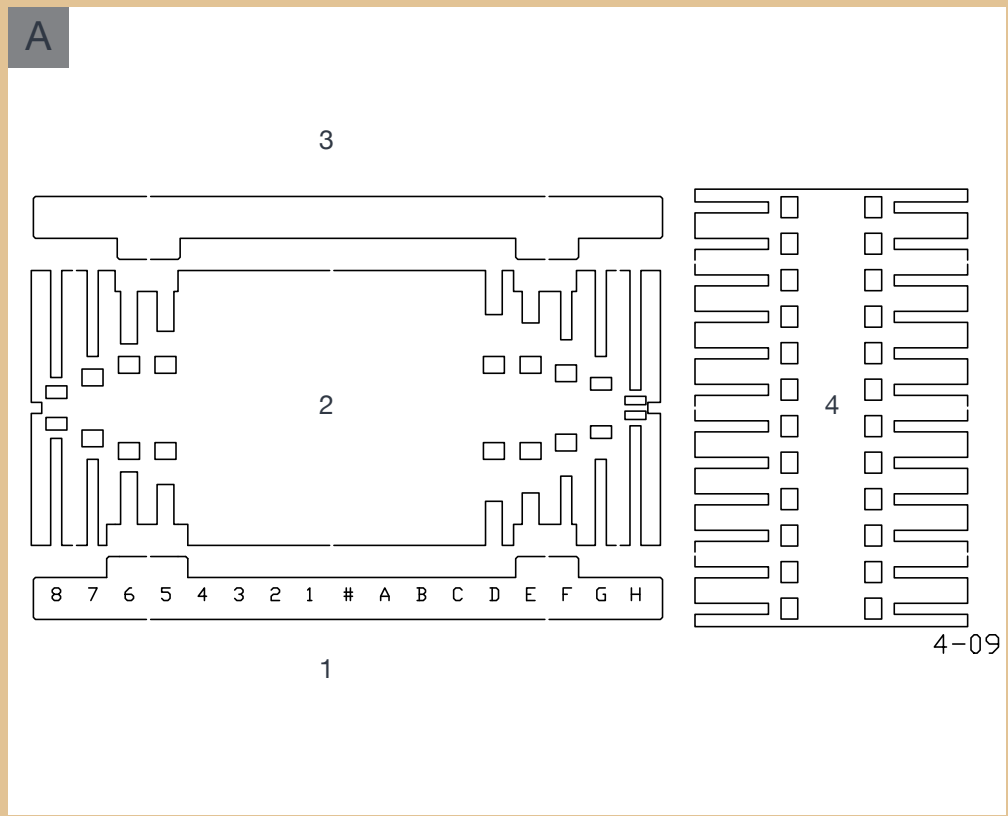
30



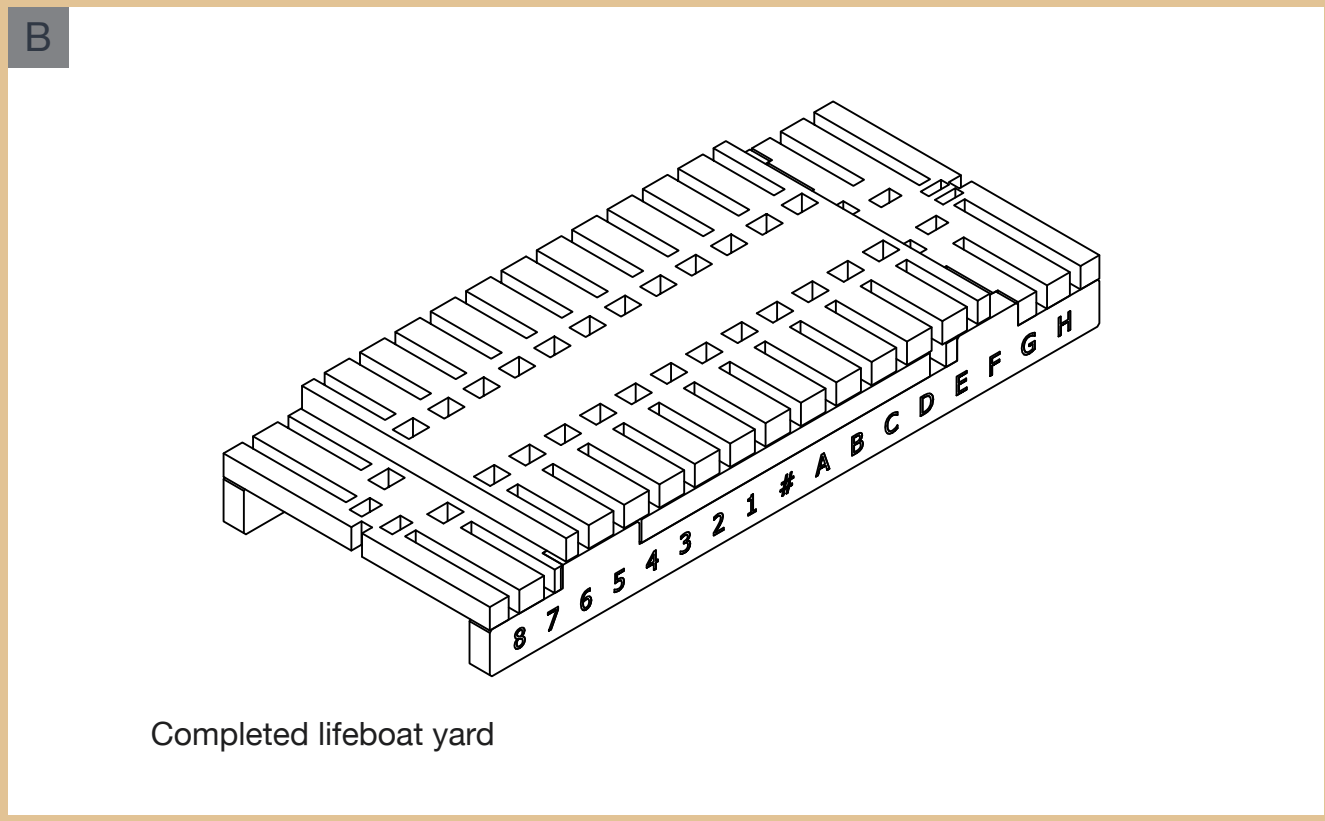
30 Completed hawse piece front view. With a round file work the end of hawse piece B as shown.

PHASE 34

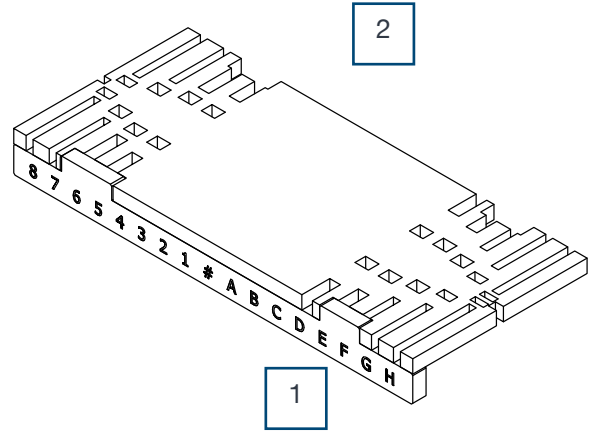
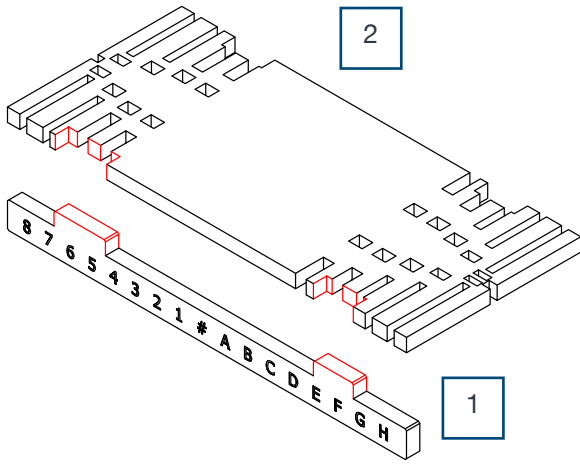
LIFEBOAT YARD



A Drawing of board 4-09.

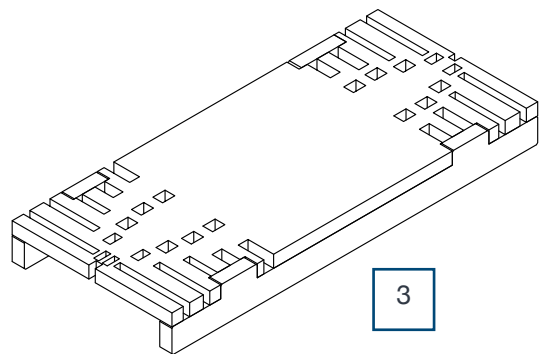
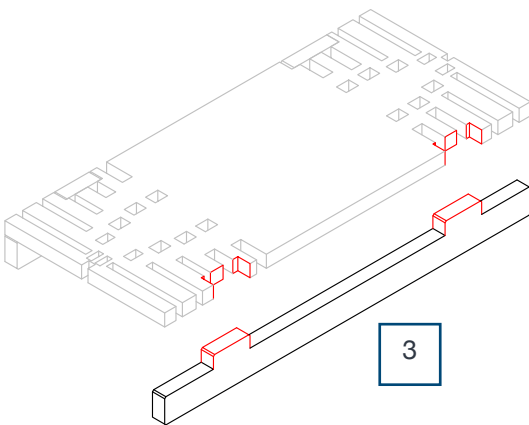


1



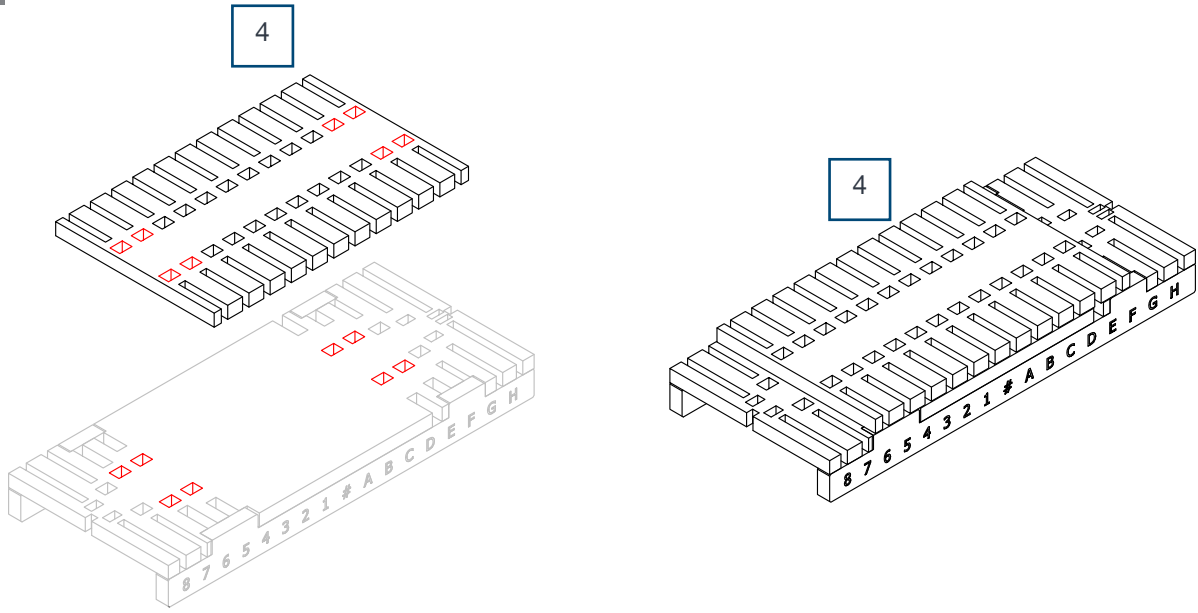
1 Remove pieces 1 and 2 from board 4-09 and glue them into the joints of the boat yard, applying glue on the parts highlighted in red.

2



2 Remove piece 3 from board 4-09 and glue it into the joints of the boat yard, applying the glue on the parts highlighted in red.

3



3

Remove piece 4 from board 4-09 and glue it around the red highlighted areas of the tablet, leaving the holes clean for future insertion of the frames.

4



4

Completed lifeboat yard (side view).

5



5

Completed lifeboat yard (top view).