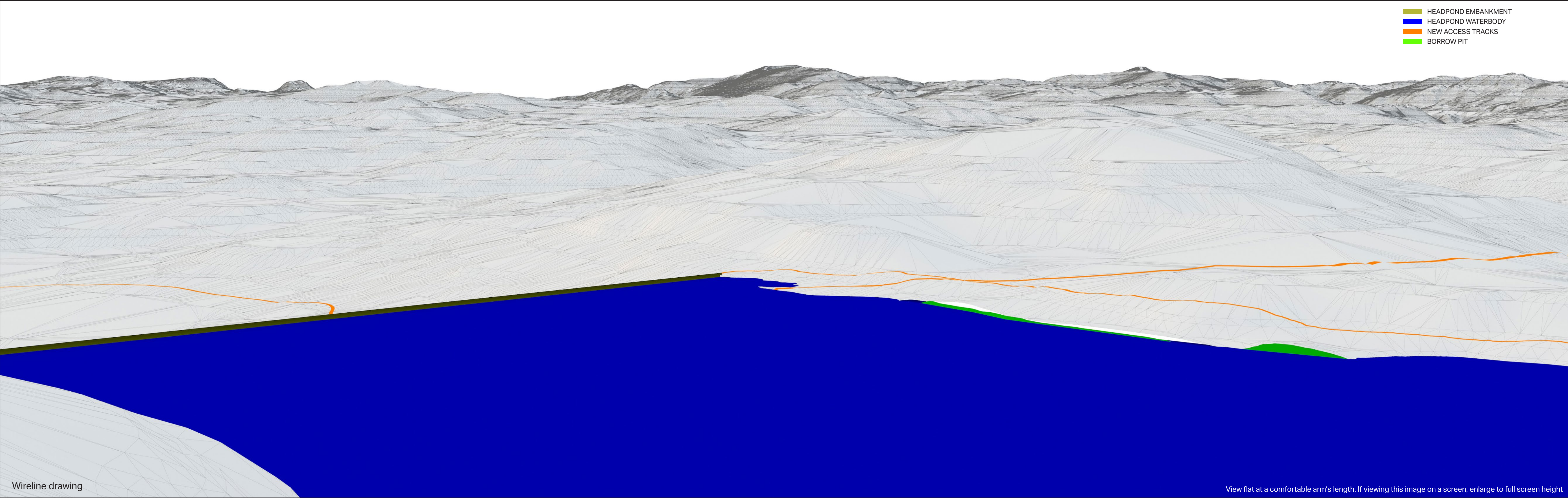


Viewpoint 1: Meall Fuar-mhonaidh summit

OS reference:	E245707, N822216	Horizontal field of view:	90° (cylindrical projection)	Camera:	Canon EOS R5
Eye level:	695m AOD	Principle distance:	522mm	Lens:	RF 50mm f1.8
Direction of view:	302° (NW)	Paper size:	841 x 297mm	Camera height:	1.5m
Distance to headpond:	263m	Correct printed image size:	820 x 130mm	Date and time:	10/06/2025, 10:59
Distance to LCW:	2.3km				



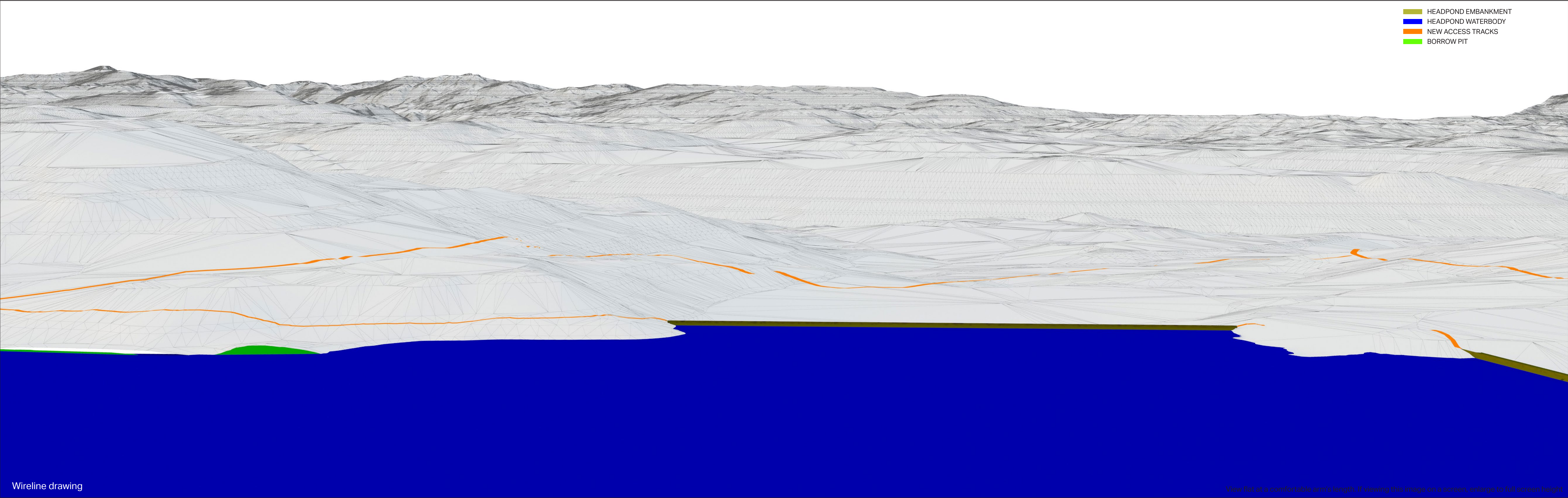
- HEADPOND EMBANKMENT
- HEADPOND WATERBODY
- NEW ACCESS TRACKS
- BORROW PIT

Viewpoint 1a: Meall Fuar-mhonaidh summit

OS reference: E245707, N822216
Eye level: 695m AOD
Direction of view: 284° (NW)
Distance to headpond: 263m
Distance to LCW: 2.3km

Horizontal field of view: 53.5° (planar projection)
Principle distance: 812.5mm
Paper size: 841 x 297mm
Correct printed image size: 820 x 260mm

Camera: Canon EOS R5
Lens: RF 50mm f1.8
Camera height: 1.5m
Date and time: 10/06/2025, 10:59



Wireline drawing

View flat at a comfortable arm's length. If viewing this image on a screen, enlarge to full screen height.

Viewpoint 1b: Meall Fuar-mhonaidh summit

OS reference:	E245707, N822216	Horizontal field of view:	53.5° (planar projection)	Camera:	Canon EOS R5
Eye level:	695m AOD	Principle distance:	812.5mm	Lens:	RF 50mm f1.8
Direction of view:	320° (NW)	Paper size:	841 x 297mm	Camera height:	1.5m
Distance to headpond:	263m	Correct printed image size:	820 x 260mm	Date and time:	10/06/2025, 10:59
Distance to LCW:	2.3km				

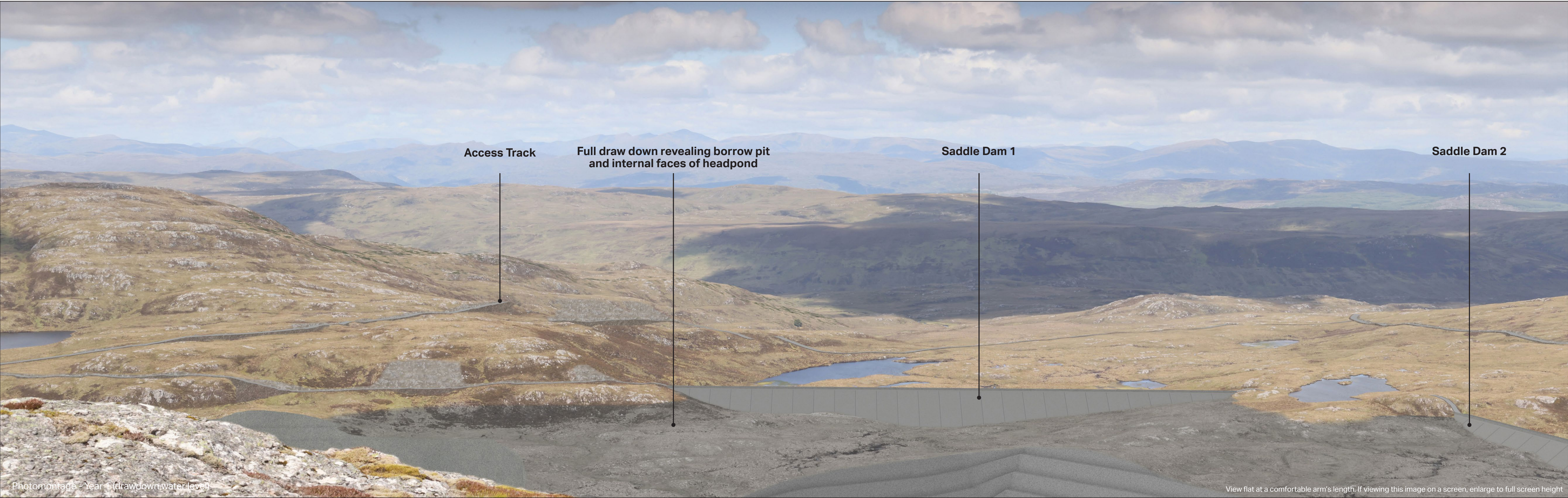


Photomontage - Year 1 (drawdown water level)

View flat at a comfortable arms length. Viewing this image on a screen, enlarge to full screen height

Viewpoint 1a: Meall Fuar-mhonaidh summit

OS reference:	E245707, N822216	Horizontal field of view:	53.5° (planar projection)	Camera:	Canon EOS R5
Eye level:	695m AOD	Principle distance:	812.5mm	Lens:	RF 50mm f1.8
Direction of view:	284° (NW)	Paper size:	841 x 297mm	Camera height:	1.5m
Distance to headpond:	263m	Correct printed image size:	820 x 260mm	Date and time:	10/06/2025, 10:59
Distance to LCW:	2.3km				



Photomontage - Year 1 (drawdown water level)

View flat at a comfortable arm's length. If viewing this image on a screen, enlarge to full screen height

Viewpoint 1b: Meall Fuar-mhonaidh summit

OS reference:	E245707, N822216	Horizontal field of view:	53.5° (planar projection)	Camera:	Canon EOS R5
Eye level:	695m AOD	Principle distance:	812.5mm	Lens:	RF 50mm f1.8
Direction of view:	320° (NW)	Paper size:	841 x 297mm	Camera height:	1.5m
Distance to headpond:	263m	Correct printed image size:	820 x 260mm	Date and time:	10/06/2025, 10:59
Distance to LCW:	2.3km				



Photomontage - Year 15 (top water level)

View flat at a comfortable arm's length. If viewing this image on a screen, enlarge to full screen height

Viewpoint 1a: Meall Fuar-mhonaidh summit

OS reference:	E245707, N822216	Horizontal field of view:	53.5° (planar projection)	Camera:	Canon EOS R5
Eye level:	695m AOD	Principle distance:	812.5mm	Lens:	RF 50mm f1.8
Direction of view:	284° (NW)	Paper size:	841 x 297mm	Camera height:	1.5m
Distance to headpond:	263m	Correct printed image size:	820 x 260mm	Date and time:	10/06/2025, 10:59
Distance to LCW:	2.3km				



Photomontage - Year 15 (top water level)

View flat at a comfortable arm's length. If viewing this image on a screen, enlarge to full screen height

Viewpoint 1b: Meall Fuar-mhonaidh summit

OS reference:	E245707, N822216	Horizontal field of view:	53.5° (planar projection)	Camera:	Canon EOS R5
Eye level:	695m AOD	Principle distance:	812.5mm	Lens:	RF 50mm f1.8
Direction of view:	320° (NW)	Paper size:	841 x 297mm	Camera height:	1.5m
Distance to headpond:	263m	Correct printed image size:	820 x 260mm	Date and time:	10/06/2025, 10:59
Distance to LCW:	2.3km				