

June 2025

# Glen Earrach Energy Pumped Storage Hydro Development

Appendices - Additional Information

Glen Earrach Energy Ltd

Appendix 2 - Water Resources

## Appendix 2 – Water Resources

This appendix contains water balance model extracts that provide hourly time-series data demonstrating water level fluctuations in Loch Ness under various operational scenarios.

These extracts demonstrate water level fluctuations under baseline conditions (which includes Foyers PSH), with the Proposed Development (Glen Earrach) operation only, and in combination with the consented Loch na Cathrach and proposed Loch Kemp PSH.

Figure	Description
<b>Exceptional Low-Level Scenario (2023)</b>	
Figure A2-1	Entire year of 2023
Figure A2-2	May - June 2023
Figure A2-3	29 May to 13 June 2023
<b>Typical Summer Conditions (2021)</b>	
Figure A2-4	Entire year of 2021
Figure A2-5	May - July 2021
Figure A2-6	29 May to 13 June 2021
<b>Winter Scenario, seasonal variable weir not in operation (2020)</b>	
Figure A2-7	January – March 2020
<b>Updated Presentation Data</b>	
Figure A2-8	November 2017 (updated chart)

### Data Series Legend

- Upper Panel – levels in Loch Ness
  - **Dark blue line:** SEPA level (baseline conditions)
  - **Orange line:** Glen Earrach (GE) alone
  - **Light green line:** Glen Earrach + Loch na Cathrach (GE+LC)
  - **Light blue line:** Glen Earrach + Loch na Cathrach + Loch Kemp (GE+LC+LK)
- Lower Panel – GE station profile
  - **Dark green line:** Generation/pumping profile (flow)

## AI A2.1 Water Balance model results

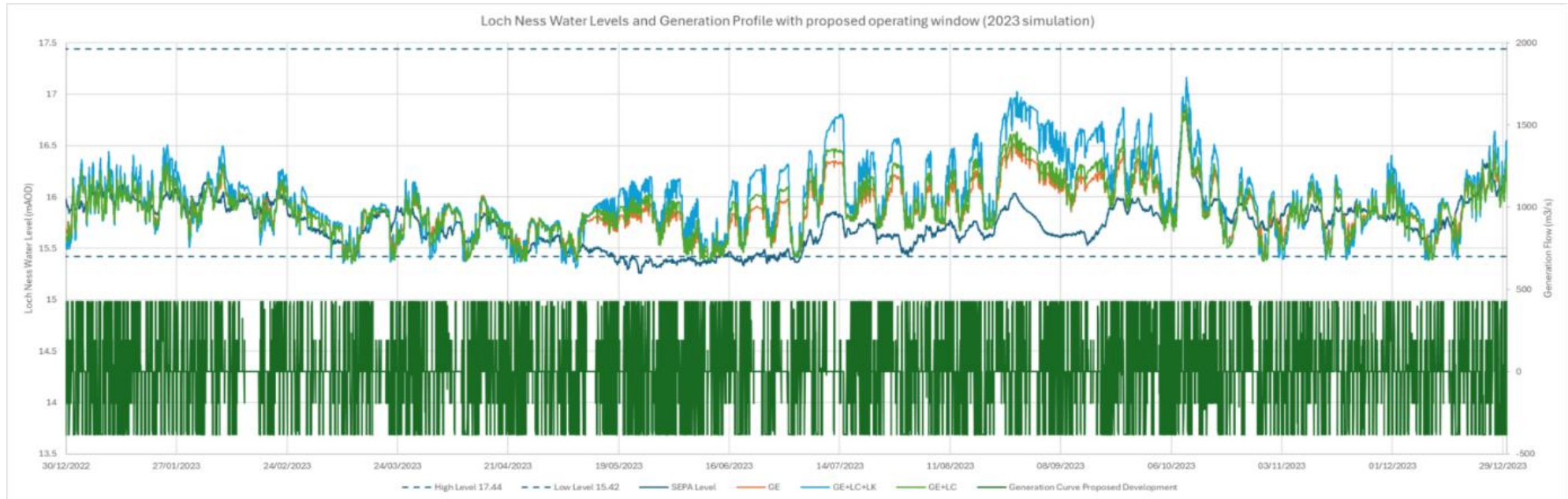


Figure A2-1 Entire year of 2023

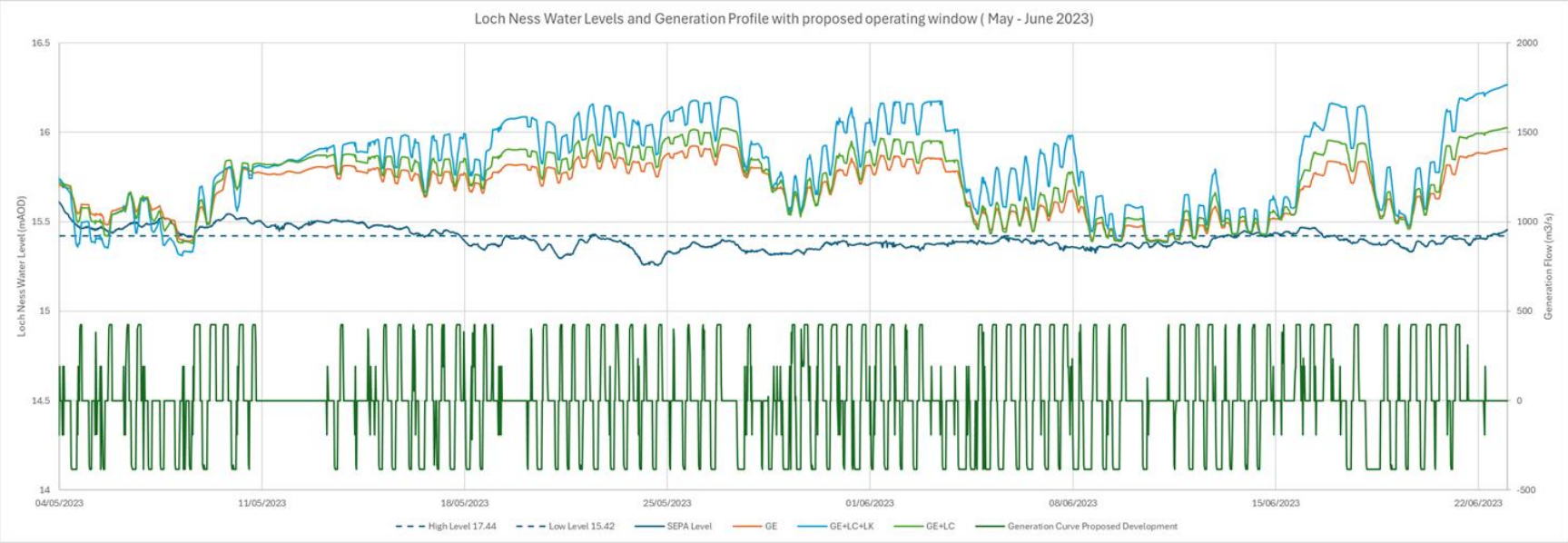


Figure A2-2 May - June 2023

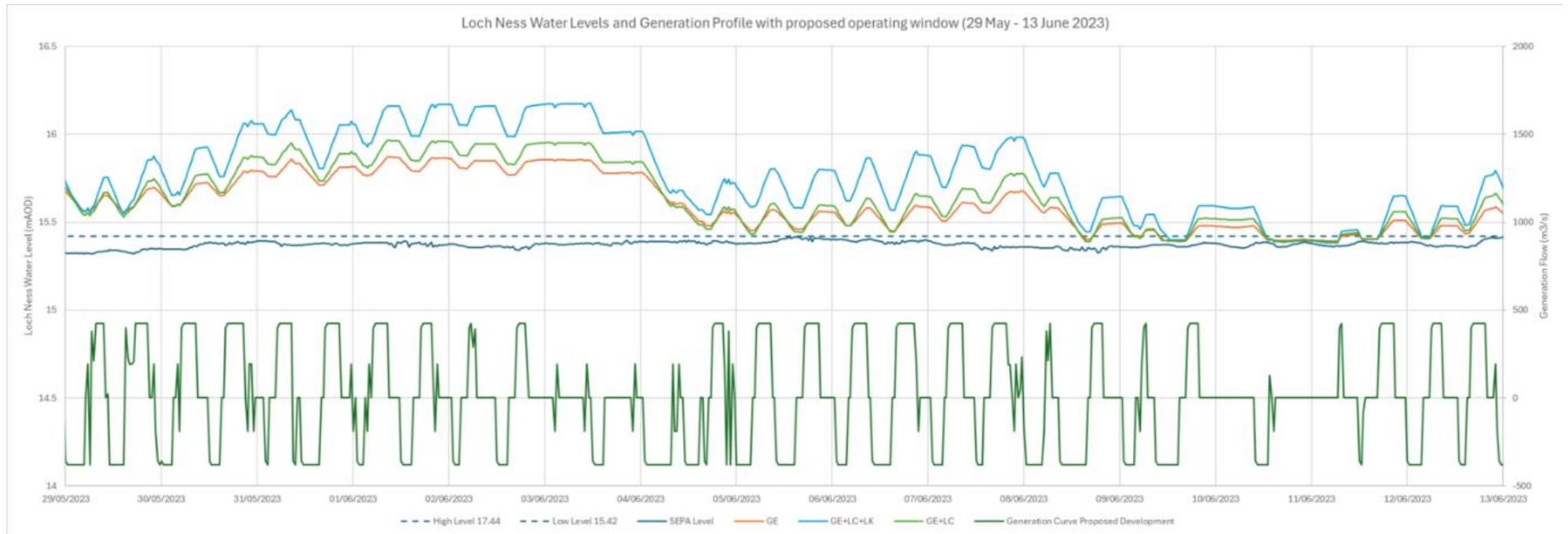


Figure A2-3 29 May to 13 June 2023

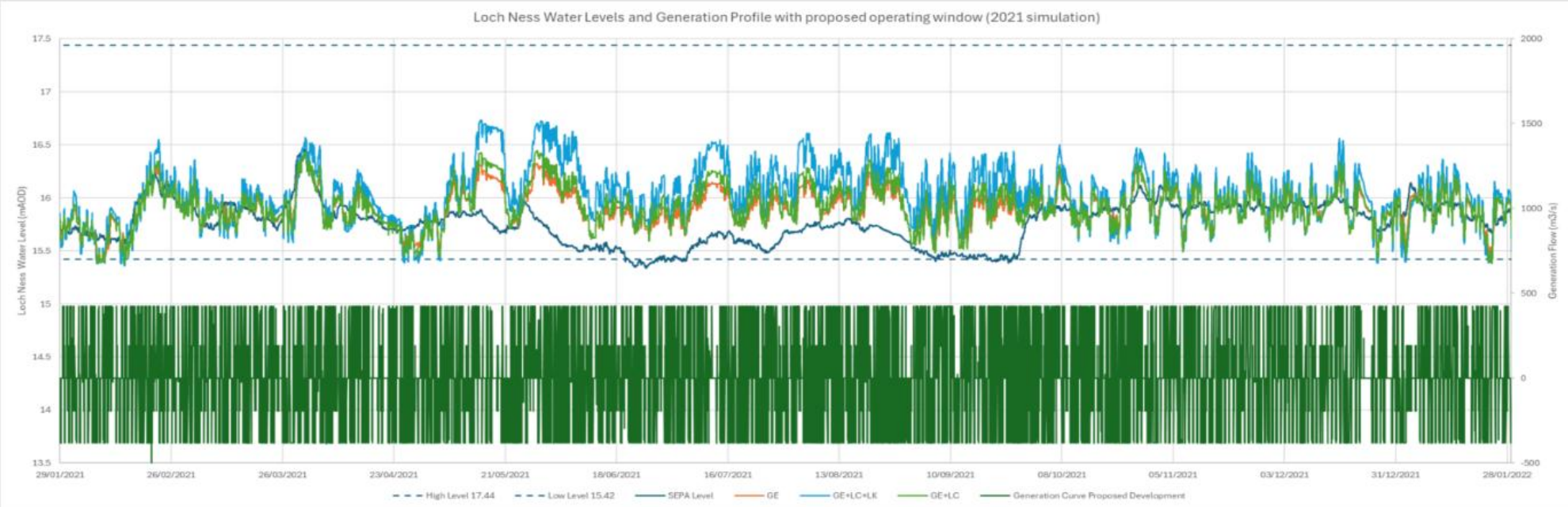


Figure A2-4 Entire year of 2021



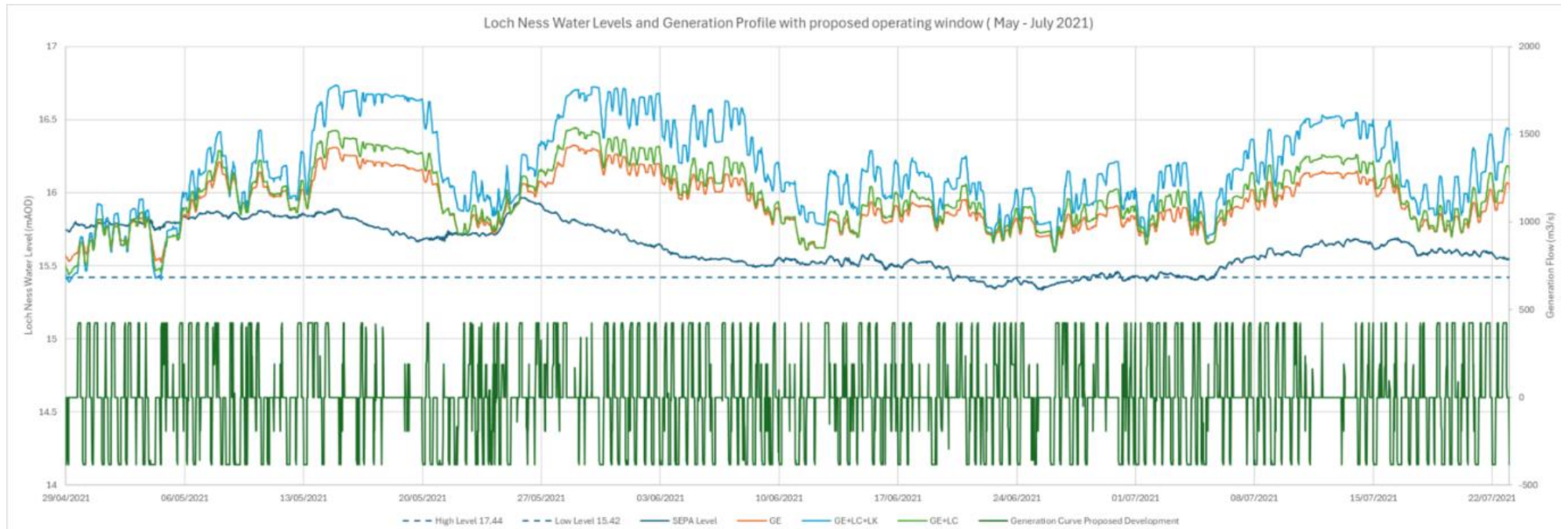


Figure A2-5 May - July 2021

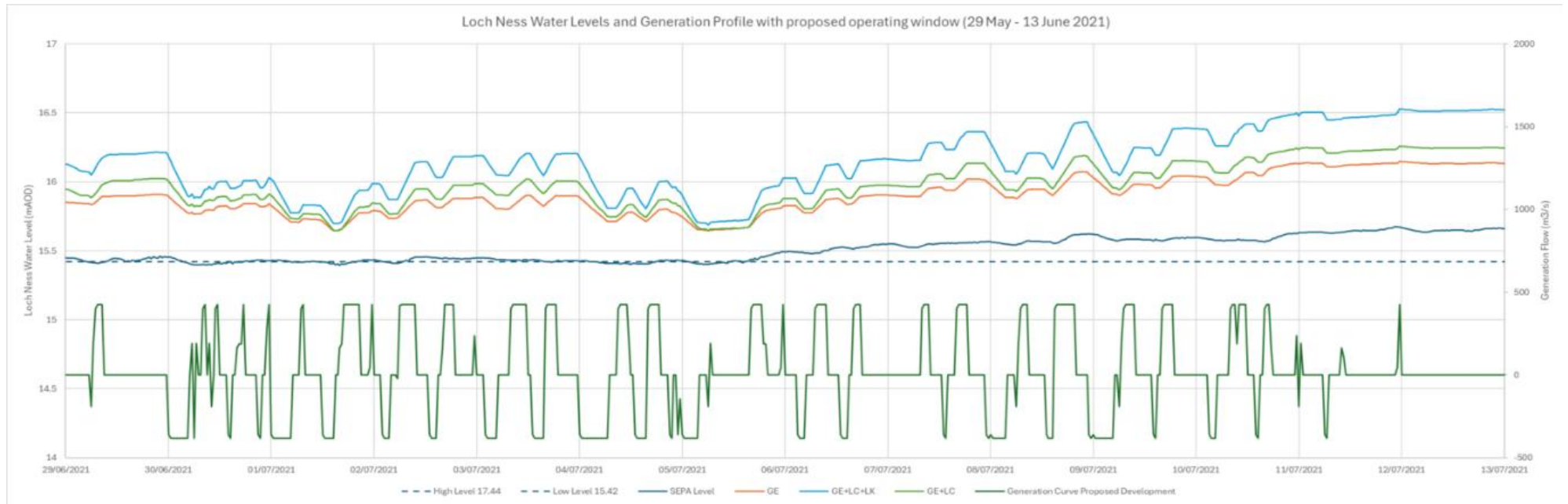


Figure A2-6 29 May to 13 June 2021



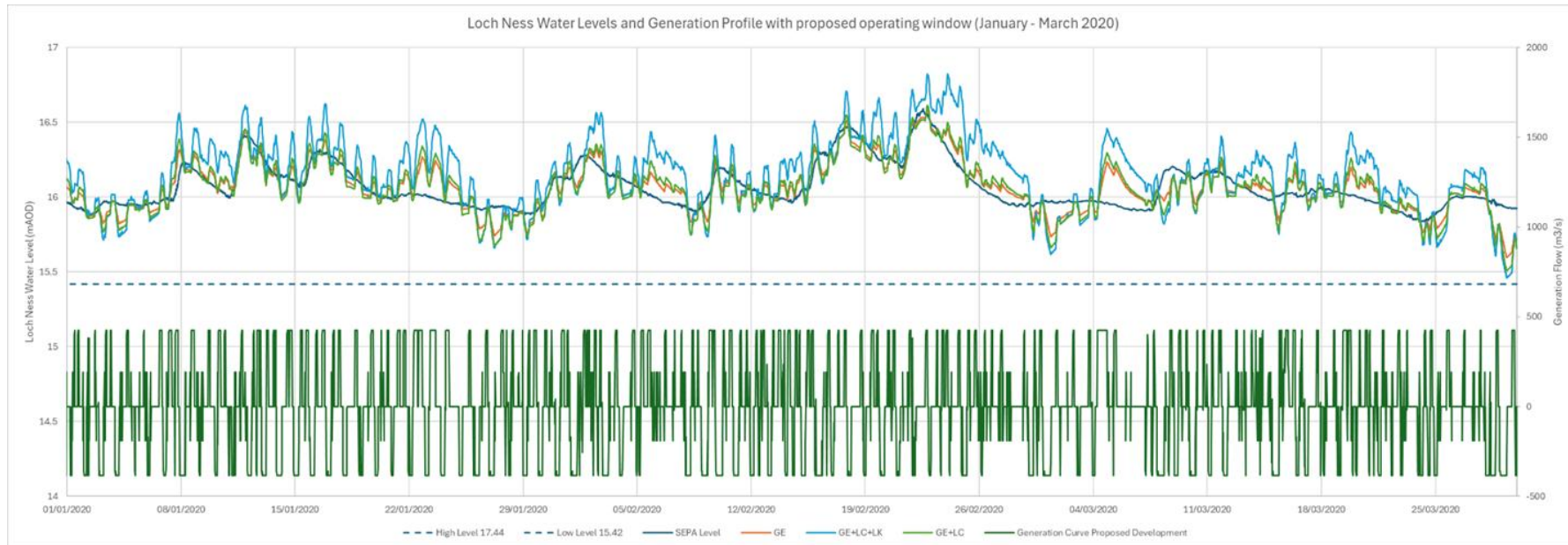


Figure A2-7 January – March 2020

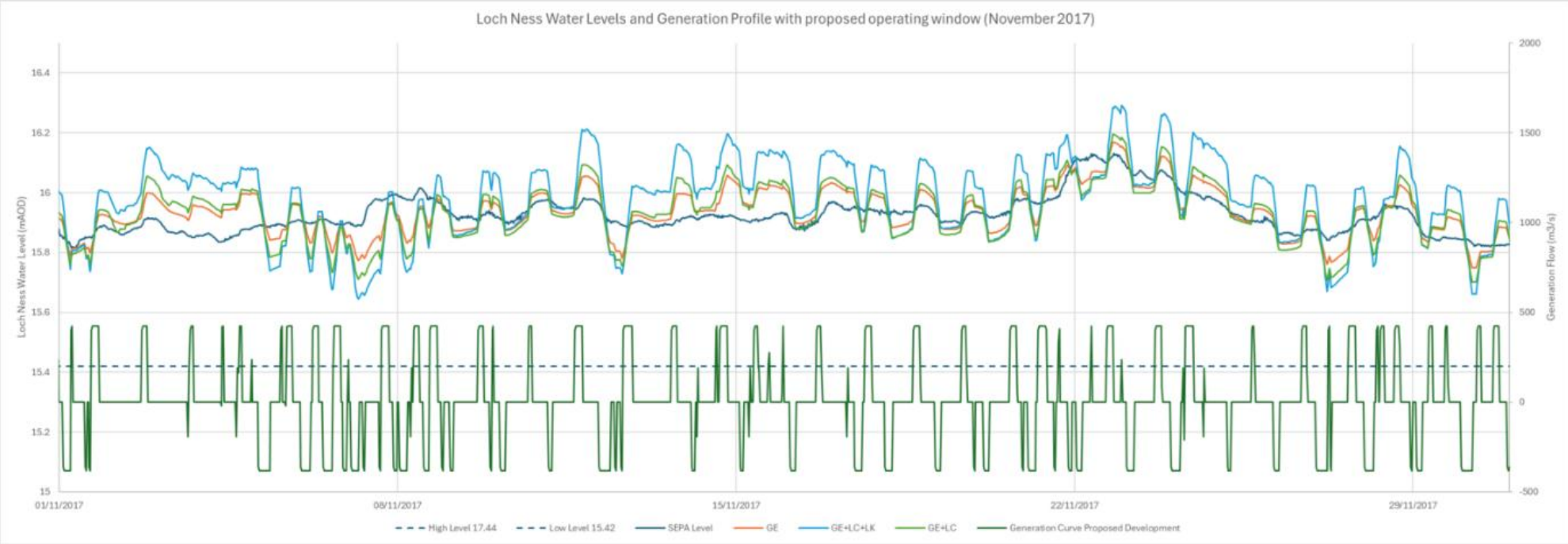


Figure A2-8 November 2017

