

# FLYMASTER TRACKER 4G



USER MANUAL

# Index

1. Welcome
2. How it works
3. Getting Started
4. Keys and Leds
5. Wireless accessories
6. Managing your account
7. Livetracking
8. Cloud Flights
9. S.O.S.
10. Update firmware
11. Troubleshooting
12. Safety Warnings 
13. Tech Specs





## 1 - Welcome

Outdoor activities are always challenging.

Depending the environment around you, your activity can be a lonely and sometimes a dangerous place.

Not anymore!

You have now in your hands the best solution to be always tracked, everytime, everywhere!

FLYMASTER TRACKER is a GPS and GSM based solution that allows everybody (depending the configuration) to be followed second-by-second.

In case of emergency you can also use the S.O.S. button that will send a specific alert to your designated followers.

After your activity, you can see, in our website, almost immediately all the details about your path, with a bunch of data, including biometric details\*.

Flymaster Tracker is a great recreational sporting accessory but also a potencial life saver. Even in the toughest conditions!

\*when used with heart-G accessory - AVAILABLE SOON

## 2 - How it works

2.1 - The 72 Channel GPS module reads your location very accurately.

2.2 - All the built-in sensors also work simultaneously at a very high data rate, getting all the needed data at that precise second.

2.3 - The GSM module sends all that data each second to our servers.

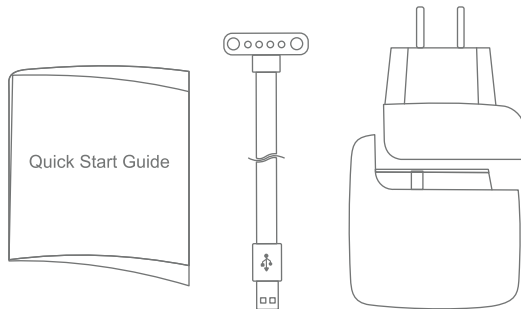
2.4 - Flymaster treats all that huge ammount of data and, displays in [lt.flymaster.net](http://lt.flymaster.net) website, your current position, altitude, above-ground-level altitude, speed, distance covered, and heart-rate\* instantaneously. All this can be followed **LIVE**.

2.5 - After the activity is over, all the data will be stored in our servers and a detailed analisys of the activity is made and shown to you, the general public if allowed by you, in your personal account.

## 3 - Getting Started

### 3.1- What's in the box:

Wall Charger, Magnetic cable, Lanyard and Printed Quick Start Guide.



## 3.2 The Device:



## 3.3 Main features



Second by second  
Live Tracking



Button



Magnetic  
connector



Huge  
battery life



Rugged  
construction



Worldwide  
coverage

### 3.4 The Device



**1** POWER BUTTON

---

**2** SELECT BUTTON

---

**3** STATUS LEDS

---

**4** ON/OF STATUS LED

---

**5** GPS STATUS LED

---

**6** GSM STATUS LED

---

**7** S.O.S. BUTTON



## 3.5 Before first usage

3.5.1 - Before first usage is recommended to make a full charge of Flymaster Tracker battery. Connect the Tracker into the magnetic USB cable and into the supplied charger. The status leds starts to blink in sequence from right to left. The full charge is achieved when all the status leds begin to blink simultaneously. After the battery is fully charged the device enters in a “power-off” mode and no leds will be visible.

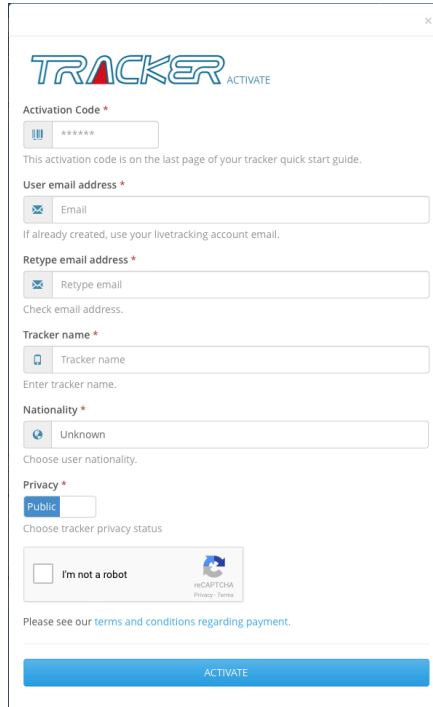


3.5.2 - On the back cover of the Quick Start Guide you will find your unique QR code, and registration code.



### 3.5.3 - Register and activate the Tracker

On the back cover of the Quick Start Guide you will find your unique QR code, scan it and you will be lead to the registration process\*.



The image shows a web form titled "TRACKER ACTIVATE". It contains several input fields and checkboxes for user registration. The fields are: "Activation Code" (with a QR code icon), "User email address" (with an email icon), "Retype email address" (with an email icon), "Tracker name" (with a mobile phone icon), and "Nationality" (with a globe icon). There is also a "Privacy" dropdown menu. At the bottom, there is a reCAPTCHA checkbox labeled "I'm not a robot" and a blue "ACTIVATE" button. The form includes instructions for each field and a link to terms and conditions.

**TRACKER** ACTIVATE

**Activation Code \***

This activation code is on the last page of your tracker quick start guide.

**User email address \***

If already created, use your livetracking account email.

**Retype email address \***

Check email address.

**Tracker name \***

Enter tracker name.

**Nationality \***

Choose user nationality.

**Privacy \***

Choose tracker privacy status

☐ I'm not a robot

reCAPTCHA  
Privacy - Terms

Please see our [terms and conditions](#) regarding payment.

**ACTIVATE**

\* Alternatively you can go to <https://lt.flymaster.net/#act> and use the activation code.

3.5.4 - A valid **PayPal**™ account is required to register and activate the Tracker. Also important is to avoid virtual or temporary credit cards in the **PayPal**™ account. Users who don't have a valid **PayPal**™ account have to create one **before any further step**.

3.5.5 - If you are a new user, and if you were never registered in Flymaster Live Tracking service, a new account will be created and you will receive back a validation email. You only need to follow the validation link. Be sure you use a valid email address. **Do not try to register the Tracker, by any other process before receiving the confirmation email.**

3.5.6 - If you already have a Live Tracking user account, be sure to use that same email account on the Tracker registration.

## 4 - Keys and leds

### 4.1 - Power on/off the Tracker

PRESS KEY 1 Then PRESS KEY 2

**POWER ON/OFF** 1 Then 2

**POWER ON/OFF:** Press key 1

**CONFIRM:** Press key 2

The status led blinks in sequence indicating the remaining time to confirm in key 2



### 4.2 - Operating modes and status

Tracker is On (orange led blinks)



GPS position is fix (green led blinks)



GSM is connected (blue led blinks)



Tracker is sending pending data  
(Blue led alone blinks)



**Your tracker will be ready to use only when all the 3 leds blinks in sequence.**

### 4.3 - Checking Status ( TRACKER MUST BE ON )

Battery level  
Press key 2 **ONCE**.



GPS signal strength  
Press key 2 **TWICE**.



GSM signal strength  
Press key 2 **THRICE**.



Each status led corresponds at about 20% of strenght/capacity of each Flymaster Tracker feature (Battery, GPS and GSM).



## 4.4 - Resetting the Tracker

Press both “SOS” key and “Select” key at same time until all the leds turn off . When the reset is done tracker reboots itself.



## 4.5 - Putting the Tracker into “fail-safe” mode

With the **USB cable attached** to your computer, Press both “SOS” key (7) and “Select (2)” until all the leds turn off , immediatly press “power (1)” key.


keep the “power (1)” key pressed until the “power” led stays lit. After, using the “Designer” software, it’s possible to restore the original firmware.












## 6 - Managing your account

After login in, Click on “MY ACCOUNT”

### 6.1 My instruments

In this form you have a list of all your Trackers or other Flymaster Instruments. In each row you can edit your Tracker or instrument details. To access the details click on this icon: 

My instruments		
#	Name	
5556	FL	 
902384	Successo	  
3001279	Francisco Lima	 
3002258	Francisco Lima	 
<a href="#">Register new instrument</a>		

#### 6.1.1 Instrument details:

In this form you can manage : General details, XC and LT third-party servers, Groups, sessions and S.O.S. and other messages.

In General settings, the **Speed Threshold** sets the speed your tracker starts to record your activity.

[Back](#)

Successo [ #902384 ]

General

XC-Servers

LT-Servers

Groups

Sessions

SOS

Messages

Name

Successo

Gender

Male

Nationality

Albania

Visible

Yes

Choose if your track will be visible on livetracking.

Public

Yes

Choose if your flights will be public on cloud flights.

Glider icon

Bicycle

Speed threshold

Select speed threshold

Choose speed threshold to start your activity.

[Save changes](#)

## 6 - Managing your account

## 6.2 My SIM cards

In this form you have a list of all your SIM cards associated with your Trackers or other Flymaster instruments.

Back

X

My SIMs

			Status	
1	SIM	ID: 89314404000156505241	Active	<a href="#">DETAILS</a>

Activate new SIM

### 6.2.1 SIM details

In this form you can check SIM plan type and expire date. You can also set the auto-renew feature and choose the coverage plan.

[Back](#)

My SIMs

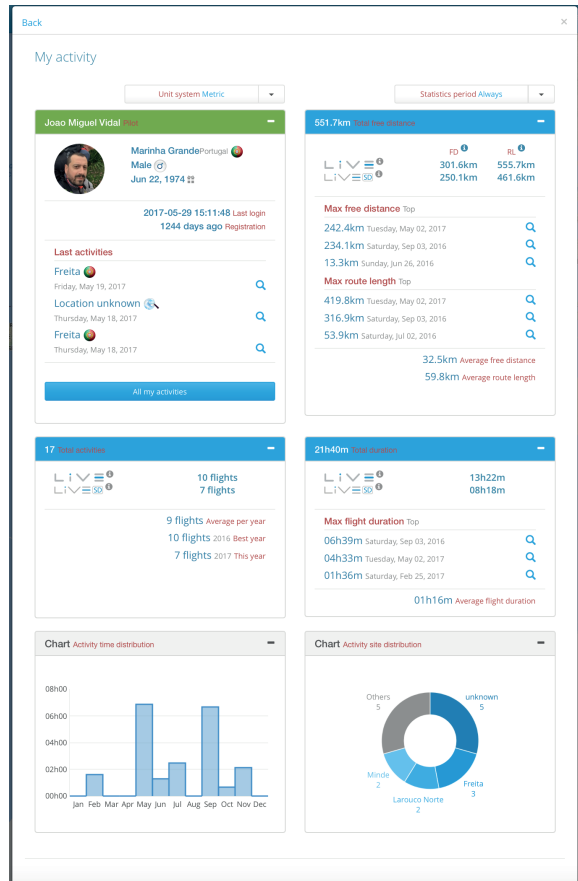
			Status	
1	SIM	ID: 89314404000156505241	Active	<a href="#">DETAILS</a>
Expires on				
		2018-12-24 23:59:25	<a href="#">Renew SIM</a>	
Auto renew				
		Enabled		
Coverage				
		Normal		

[Activate new SIM](#)

## 6 - Managing your account

### 6.3 My activity

In this form you can check your activity summary: Best activities, considering duration or distance; total activities and total activities by instrument; activity time and location distribution.



# 6 - Managing your account

## 6.3.1 All my activities

In this form you have listed all your activities with the main properties. In each one you can view the activity details, playback the activity, download the activity in several file types, upload to XC third-party servers and delete the activity.

Back

×

My activities

Tracker	Date	Takeoff	Duration	Distance	
3210	2017-02-25 13:01:14 UTC	Linhares 1	01:36:18	3.0km	▼
17	2016-11-13 15:04:11 UTC	Minde	00:51:49	3.1km	▼
17	2016-11-13 12:06:05 UTC	Minde	00:32:01	4.1km	▼
17	2016-11-12 12:03:11 UTC	Polvoeira	00:24:42	11.2km	▼
17	2016-11-12 11:30:07 UTC	unknown	00:18:56	11.1km	▼
17	2016-10-30 13:10:34 UTC	Azinha	00:40:03	3.5km	▼
17	2016-09-03 11:44:46 UTC	Fundão - Sul	06:39:49	234.1km	▼
17	2016-07-02 12:12:15 UTC	unknown	01:29:36	11.3km	▼
17	2016-07-01 13:47:39 UTC	Larouco Norte	00:58:43	4.2km	▼
17	2016-06-26 15:13:21 UTC	Larouco Norte	01:17:14	13.3km	▼
17	2016-05-29 09:46:01 UTC	unknown	00:09:48	5.8km	▼



## 6 - Managing your account

#### 6.3.1.1 - Activity detail

In this form you can analyse the most relevant data of your activity. You can check instant values and absolute statistics, for each main moment.



## 6 - Managing your account

### 6.4 - My Groups

In this form you can manage the groups. You can use groups to privately live track yourself, to Live Track just you and your friends or to organize a formal competition.

×

My groups

#	↕	Name	↕	Competition	Owner	
1911		avionics		■	■	<div><div>✎</div><div>🔗</div><div>🗑</div></div>

Add Group

## 6 - Managing your account

### 6.4.1 - Group Details

In this form you can set general group details as: Group name, visibility and browsability, group type, start and end date. You can also customize the group map, setting the map center coordinates and the zoom level. You can add group users, inviting other Live Tracking users. Also possible is to add to the group the instruments registered in your account, or invite instruments by their serial number.

[Back](#)✕

avionics details

Group Name

avionics

Group URL

lt.flymaster.net/bs.php?grp=1911&pwd=26491546146eb66b382f35ff6a01c8

Visible

☒ YES

Browsable


☒ YES

Competition

☒ YES


Task sender

3210




Start Date

2017-04-21



End Date

2037-12-31




Customize group map

☐ NO

Group users

Group instruments

Save changes

Upload file 

## 7 - Livetracking

How to be visible in the Livetracking page?

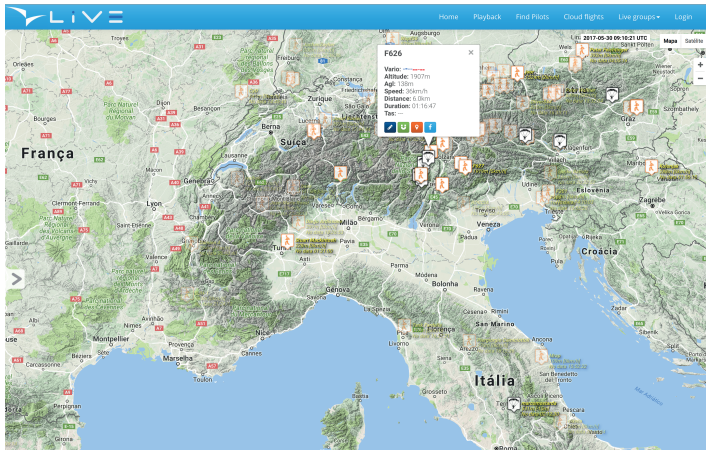
After confirm that all the 3 status leds are blinking, the speed threshold (can be set in the instruments details [see chapter 5.1.1]) have to be reached.

Just only after all this 4 conditions are established, it's possible to follow your activity on the map.

### 7.1 - Livetracking map

In this page you can livetrack all Flymaster instruments activity, including yours, as long they are "public". On livetracking you are able to use almost every features you already know from Google Maps: Zoom, Pan and Map type control.






Livetracking time is based on UTC time. Nevertheless, pay attention there's about 4 minutes delay on time. This is an intencional procedure in order to deliver users the smoothest livetracking experience. The icons in the map gives you information about user activity, movement and state. According to activity, icon can change (e.g. paragliding, swimming, etc.). If the user, has low speed and low altitude the icon presented will be walking. Also, when the users get disconnected, overtime the icon will become more and more grayed, until it disappears after 24 hours.

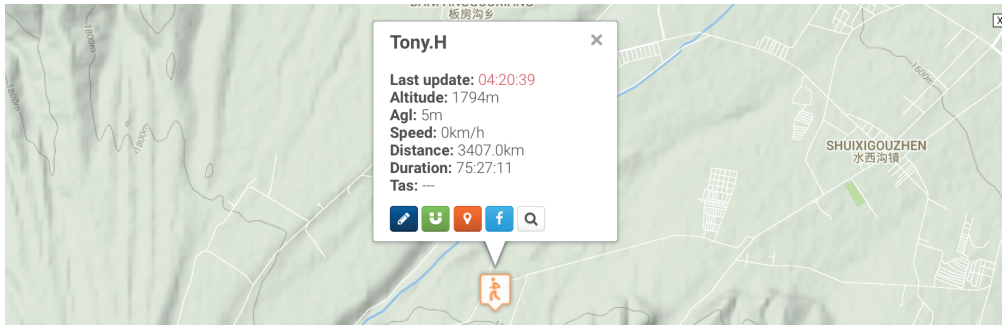


## 7 - Livetracking

### 7.2 - User info box

If you click on a user icon an info window will open. There's several realtime information about user's action (e.g. connection status, current altitude, AGL, speed, etc.). In this window you also have buttons with the following actions:

-  Show user's path
-  Center map on user
-  Get directions for user's location
-  Share on Facebook user's location
-  Analyse the activity detail





## 7 - Livetracking

### 7.4. - Other features

7.4.1 - Playback - Here you are able to travel in time and play actions occurred in the time you've selected.

7.4.2 - Sidebar - This feature is available on desktop mode. On mobile devices, same functionalities can be found on Find pilots. There is a list of all tracked pilots on the last 24 hours. You can view pilot's name and connection status (on page load this last item can take a while to update). It is possible to search the list, which can be sometimes quite populated, by pilot's name. For each pilot specific information just click on it's row. You will be able to view pilot's image, nationality, gender (this informations is pilot's responsibility). You can also check live data like speed, coordinates and other data.

7.4.3 - Live groups - In this form, you will get current live groups. The conditions for a group to appear on this list are: have a valid date (with start date previous or equal to current day and end date superior to current day) and to have at least one group instrument (instrument that have been added to group) with session active (it has to be switched on and with GSM valid signal).

7.4.4 - Chat - On the bottom right corner, there's chat feature. Chat is available on main group and on the groups where owner enables it.

When available, you can always read messages in the chat, but to interact in the conversation you have to be registered and logged in our website.

Conversations will be visible during the current day. Conversations content must be related to group's, user's or activity actions. Flymaster reserves to itself the right to delete conversations that are beyond allowed contents or if it lacks of politeness.

## 8 - Cloud Flights

**8.1 - Cloud Flights** - Here you can view stats and details from activity or other livetracked activities from all registered users, that have their activity public. Listing activities is not the only feature.

**8.1.1. - Activity Feed** - After a activity is completed and processed it's shown on activities feed according to date order. Each row have activity details like activity type, user picture, name, gender and nationality, activity date, location, duration and open distance (distance from start to end location).

Sometimes there can be some delay on publishing activity, because only completed tracks are shown. This means that if there are some pending data or your instrument, only when data is sent, the track will be concluded. Other criteria for publishing a activity is data validation. When processing data, if some activity parameter is consider invalid, that one will be marked as invalid and won't be published on activity feed. If your have an important activity marked as invalid and don't understand why or want it to be published on activity feed, please contact us.

On button you have several actions available like: activity detailed data, activity playback, download activity files (IGC, KML or CSV), send flight by email or share it on Facebook.

**8.1.2. - Top activities** - We have ranked activities according to 3 parameters: duration, distance and altitude. We update it permanently for last 7 days, current month and current year.

In each ranked activity/user, besides the ranked parameter value, you can easily see who was the user and where was start location.

**8.1.3. - Order/Filter** - To speed up your search you've available several types of orders (date, duration, distance).

You can bound searches using filters too. Activity can be filtered by time periods, user or start country, or with combined filter criteria.

It's possible to choose unit system (metric or imperial) to use in activity data as well.

## 9 - S.O.S.

### 9.1. - **S.O.S. deploy**

Press S.O.S. button over 5 seconds. The center led of the status led will start blink, indicating that the Tracker is sending the SOS message.



9.1.1. - If the 3 center leds of the status start blinking , this means that the S.O.S. message has been sent successfully.



9.1.2. - If all the 5 status leds start blinking, this means that the S.O.S. message was received and acknowledge at least by one of the pre-configured contact destination.






9.1.3 - **Cancel S.O.S.** - Press SOS button over 5 seconds. The instrument will cancel SOS mode and return to normal mode.

## 9- S.O.S.

### 9.2. - S.O.S. messaging

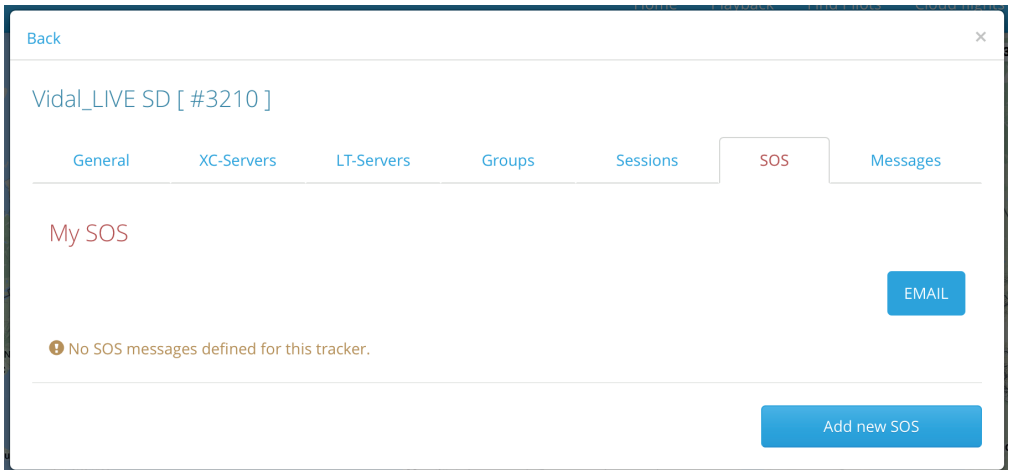
After log into your account, on the instrument details form you can manage your SOS message on the SOS tabs.

On the list you're allowed to read full message (  ), edit (  ) or remove (  ) every message. You also can add new messages, clicking on Add new SOS button. In the form, you have to enter the destination email and the message text. On email, messages will contain automatic text regarding last position coordinates, Google Maps link, available data in last position achieved and Flymaster livetracking link.

On edit form it's possible to change both fields, destination and message.

Note: In short time, for supported instruments, will be available same features for SMS messages.

**Flymaster is not responsible to any kind of search and rescue deployment.**



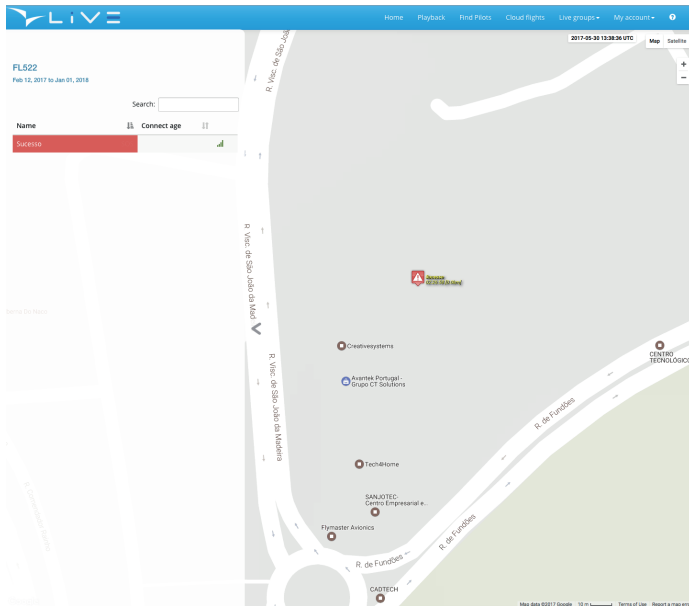
## 9 - S.O.S.

### 9.3. - S.O.S. viewing

To view a S.O.S. alert on Livetracking map, you have to add a group, and add your tracker to that group. **This type of alert is never visible in the global livetracking page.**

To add this feature, under group details in group instruments, for each device is possible to enable or disable this feature.

**The S.O.S. alert on Livetrack or in messaging service is almost immediately deployed. Any delay in the S.O.S. procedure is not Flymaster responsibility.**



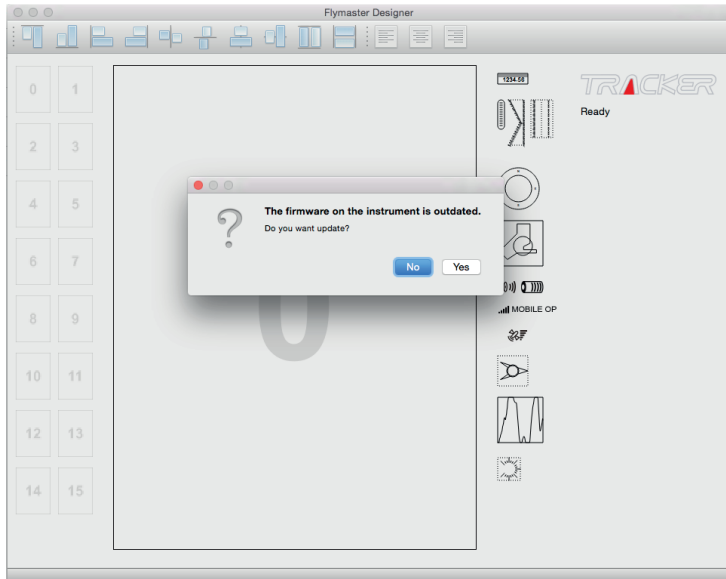
## 10 - Update firmware

10.1 - To update the Tracker firmware, download the “Designer” software available at: <https://www.flymaster.net/downloads?product=DESIGNER>.

10.2 - After installing the “Designer” software, connect the Tracker to the USB port using the supplied cable and turn the Tracker ON.

10.3 - Run the “Designer”. If the Tracker is outdated, a pop-up window will appear, asking you to update the device. The rest of the process is automatic and the Tracker will reboot itself.

10.4 - It’s recommended to repeat this procedure frequently to keep the Tracker as updated as possible.



## 11 - Troubleshooting

11.1 - The Tracker does not charge when connected to the wall-charger? Try and re-try to connect the supplied magnetic cable to the Tracker until the charging begins.

11.2 - The Tracker is unresponsive and unusual status LEDs are lit? Perform a RESET, or restore the firmware with the Tracker in “Fail-Safe” mode (check 4.4)

11.3 - The Tracker appears to be “dead” and the Reset does not solve the issue? Try to put the Tracker in “fail-safe” mode (check 4.5) and restore the firmware with the Designer software.

## 12 - Safety Warnings

12.1 - Do not connect the USB cable to the wall charger or computer with the Tracker wet.

12.2 - Do not over exceed the Tracker water-resistance standard.

12.3 - Always use the supplied lanyard to secure the Tracker.

12.4 - Avoid contact with the USB magnetic cable tip, with metallic objects. This is to prevent a possible short-circuit between the power pins, and damage the wall charger or computer USB port.





## 13 - Tech Specs

Battery Capacity (Lithium-Ion)	1800 mAh
Autonomy	→ 20 hours (1 positon per second)
Size	87x58x22.5 mm (Length x Width x Thickness)
Weight	93 grs
GPS	72 channels GPS/GLONASS
Native USB Connection	Allows connection to the PC to download Tracking Data and upload Firmware
Battery Charging	From wall adapter, car adapter or standard usb port
GSM	LTE & 2G module for multi-regional use; Cat M1/NB1 deployed bands: 2, 3, 4, 5, 8, 12, 13, 20, 26*, 28*; EGPRS quad-band, 850/900/1800/1900 MHz (* roaming bands)
Firmware update by USB	