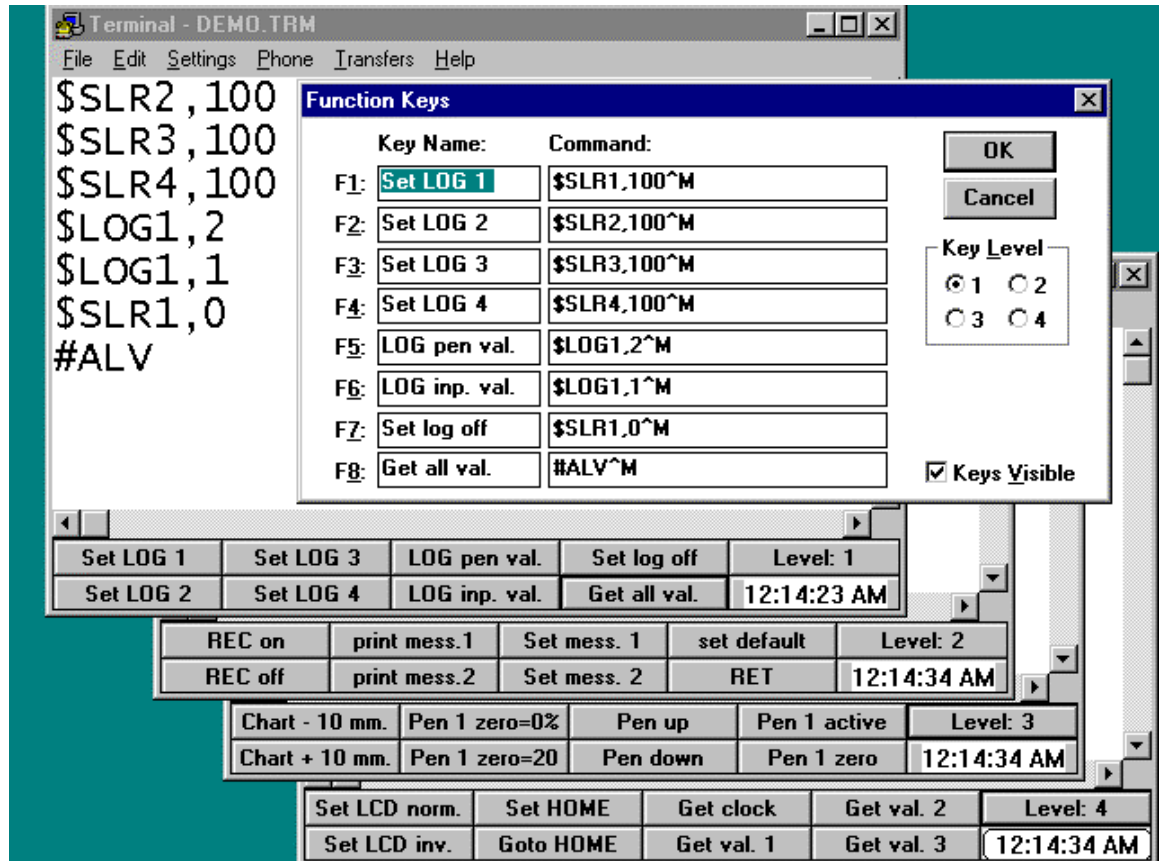


BD 300 external control with terminal program

To demonstrate the external control over the RS 232 port, the Windows 3.1 terminal program is very convenient. This program is standard supplied with Windows 3.1 or 3.11. In this program it is possible to pre-program function keys with BD 300 functions to easily demonstrate the remote control possibilities.



When the BD 300 is connected with the proper cable to the computer (see manual for cable description), just clicking a function key will activate the function in the recorder. Remember to set the baud rate in the BD 300 and terminal program the same.

A pre-programmed setting of the terminal program (demo.trm), as showed in the above figure, can be obtained from KIPP & ZONEN on request.

The screen dump shows 5 different windows:

The lower 4 screens show on the bottom line different pre-programmed function keys

The (active) top window shows how the function keys can be programmed with BD 300 commands. The ^M stands for carriage return.

When the BD300 receives the first command, it switches over to remote control.

This is showed on the display and the keyboard is locked. Returning to keyboard operation can be done by pressing the system button for 4 seconds, or by remote "RET" command.

When the BD300 accepts an external command it will send a "0" back

When the command is recognised but the parameters are wrong a "1" is returned

When the command is incorrect a "2" is returned.