

Daily Urgent Care & Bed SitRep - ULHT

next update by 11:30am 14/05/2020

Tables 1) Current Bed Capacity - Wednesday 13 May 2020 at 8am

1a) General & Acute Beds

| Occupancy | Site | | | |
|---------------------|-------|-------|-------|-------|
| | GDH | LCH | PBH | ULHT |
| G&A Beds | | | | |
| Total beds open | 108 | 518 | 348 | 974 |
| Total occupied | 32 | 340 | 223 | 595 |
| Total unoccupied | 76 | 178 | 125 | 379 |
| % occupied | 29.6% | 65.6% | 64.1% | 61.1% |

| Length Of Stay | Site | | | |
|---------------------|-------|-------|-------|-------|
| | GDH | LCH | PBH | ULHT |
| G&A Beds | | | | |
| Total beds occupied | 32 | 340 | 223 | 595 |
| Occupied LOS 7-20 | 7 | 69 | 56 | 132 |
| Occupied LOS 21+ | 0 | 32 | 18 | 50 |
| % occupied 7+ days | 21.9% | 29.7% | 33.2% | 30.6% |

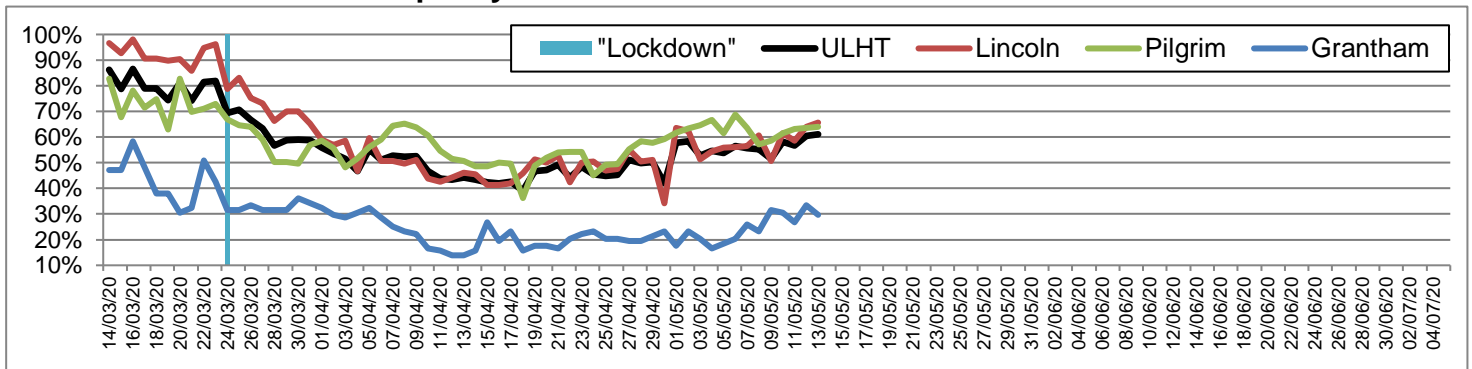
| Delayed Transfer of Care | Site | | | |
|--------------------------|------|------|------|------|
| | GDH | LCH | PBH | ULHT |
| G&A Beds | | | | |
| Total beds occupied | 32 | 340 | 223 | 595 |
| Occupied DTtoC | 2 | 0 | 0 | 2 |
| % occupied DTtoC | 6.3% | 0.0% | 0.0% | 0.3% |

1b) Intensive/Critical Care

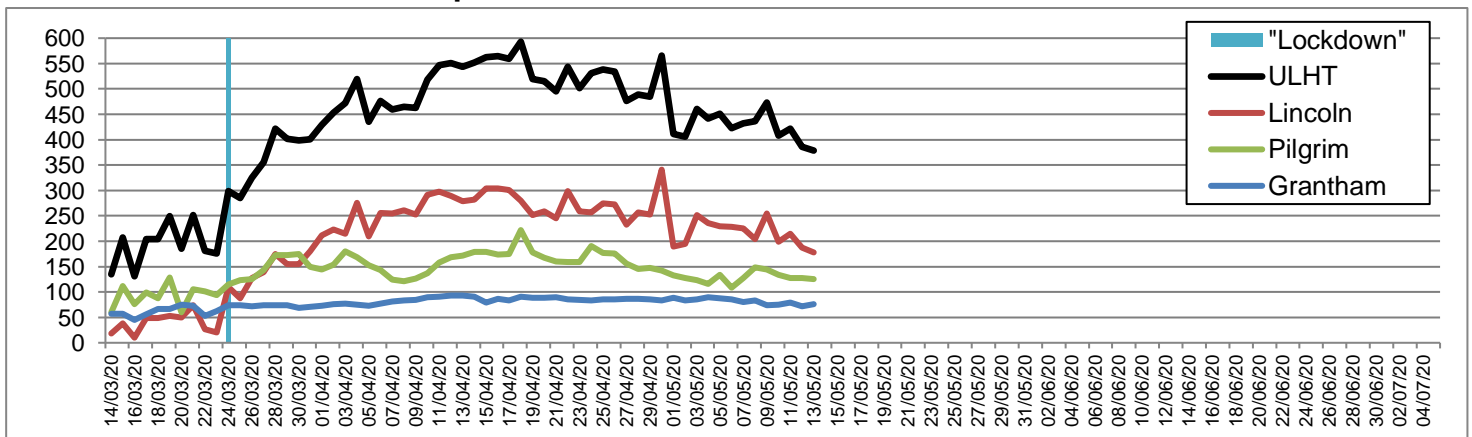
| Occupancy | Site | | | |
|-------------------|------|-------|-------|-------|
| | GDH | LCH | PBH | ULHT |
| ADULT beds | | | | |
| Total beds open | 6 | 16 | 12 | 34 |
| Total occupied | 0 | 9 | 10 | 19 |
| Total unoccupied | 6 | 7 | 2 | 15 |
| % occupied | 0.0% | 56.3% | 83.3% | 55.9% |

| Occupancy | Site | | | |
|----------------------|------|-------|-------|-------|
| | GDH | LCH | PBH | ULHT |
| NEONATAL beds | | | | |
| Total beds open | 0 | 15 | 8 | 23 |
| Total occupied | 0 | 9 | 3 | 12 |
| % occupied | - | 60.0% | 37.5% | 52.2% |

General & Acute Bed Occupancy Rate



General & Acute Bed Unoccupied



Daily Urgent Care & Bed SitRep - ULHT

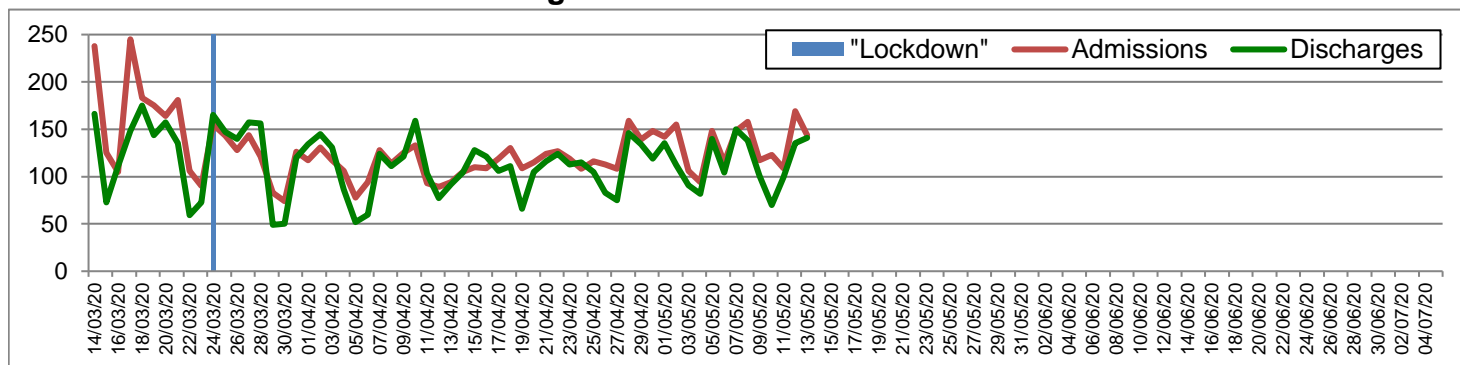
next update by 11:30am 14/05/2020

Tables 2) Inpatient Activity - Tuesday 12 May 2020 from 00:00 to 23:59

| Inpatient | Site | | | |
|------------|------|-----|-----|------|
| | GDH | LCH | PBH | ULHT |
| Admissions | 5 | 93 | 46 | 144 |
| Discharges | 5 | 85 | 51 | 141 |
| Net Flow | +0 | +8 | -5 | +3 |

| Admissions | Site | | | |
|-------------------|------|-----|-----|------|
| | GDH | LCH | PBH | ULHT |
| Emergency - ALL | 5 | 88 | 44 | 137 |
| Emergency via A&E | 3 | 65 | 30 | 98 |
| Elective | 0 | 5 | 2 | 7 |

ULHT Total Admissions vs Discharges



Tables 3) A&E Activity - Tuesday 12 May 2020 from 00:00 to 23:59

| Type 1 | Site | | | |
|-----------------|--------|-------|-------|-------|
| | GDH | LCH | PBH | ULHT |
| Attendances | 47 | 142 | 80 | 269 |
| Over 4 hours | 0 | 38 | 13 | 51 |
| % under 4 hours | 100.0% | 73.2% | 83.8% | 81.0% |

| Type 3 | Site | | | |
|-----------------|--------|--------|-------|-------|
| | GDH | LCH | PBH | ULHT |
| Attendances | 48 | 44 | 42 | 134 |
| Over 4 hours | 0 | 0 | 1 | 1 |
| % under 4 hours | 100.0% | 100.0% | 97.6% | 99.3% |

| PCS | Site | | | |
|-----------------|------|--------|-------|-------|
| | GDH | LCH | PBH | ULHT |
| Attendances | 0 | 44 | 42 | 86 |
| Over 4 hours | 0 | 0 | 1 | 1 |
| % under 4 hours | - | 100.0% | 97.6% | 98.8% |

| ALL Urgent Attends | Site | | | |
|--------------------|--------|-------|-------|-------|
| | GDH | LCH | PBH | ULHT |
| Attendances | 95 | 230 | 164 | 489 |
| Over 4 hours | 0 | 38 | 15 | 53 |
| % under 4 hours | 100.0% | 83.5% | 90.9% | 89.2% |

ULHT A&E and Front Door Attendances

