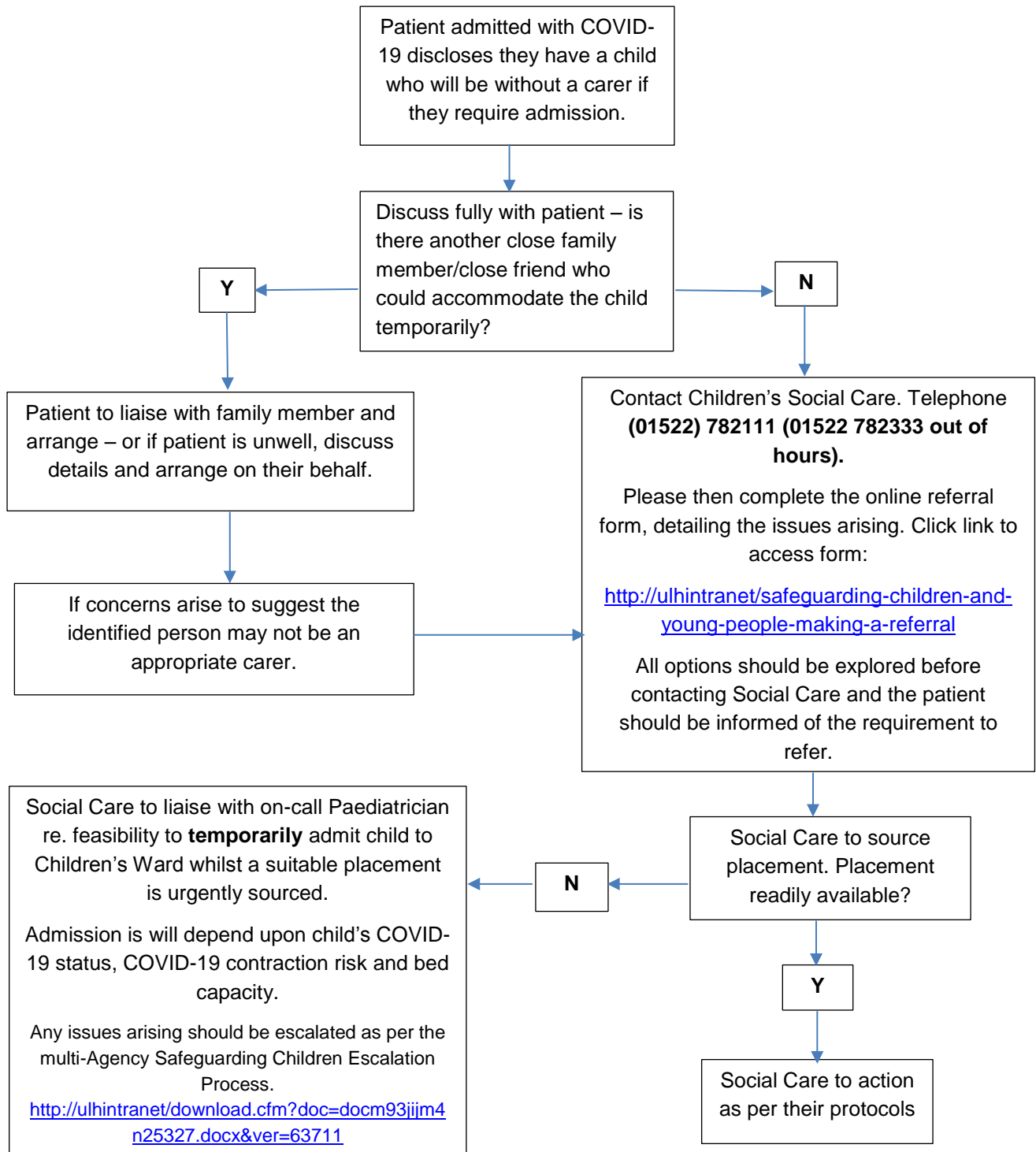


COVID-19 Response

Support for Children whose Parent/Carer requires admission due to COVID-19



In-house emotional/bereavement support is available for children whose parent is unwell/has died. This support can be accessed by contacting the Trust's **Specialist Family Practitioner Team** on **01476 464250** or by Emailing: ulh-tr.SpecialistFamilyPractitionerTeam@nhs.net

If parent/carers attempts to self-discharge in order to prevent Social Care involvement, seek support from Safeguarding Team/Site Duty Manager (out of hours) as notification to Public Health England may be required.