

Daily Urgent Care & Bed SitRep - ULHT

next update by 11:30am 27/05/2020

Tables 1) Current Bed Capacity - Tuesday 26 May 2020 at 8am

1a) General & Acute Beds

Occupancy	Site			
	GDH	LCH	PBH	ULHT
G&A Beds				
Total beds open	96	492	332	920
Total occupied	42	403	271	716
Total unoccupied	54	89	61	204
% occupied	43.8%	81.9%	81.6%	77.8%

Length Of Stay	Site			
	GDH	LCH	PBH	ULHT
G&A Beds				
Total beds occupied	42	403	271	716
Occupied LOS 7-20	13	90	73	176
Occupied LOS 21+	1	42	24	67
% occupied 7+ days	33.3%	32.8%	35.8%	33.9%

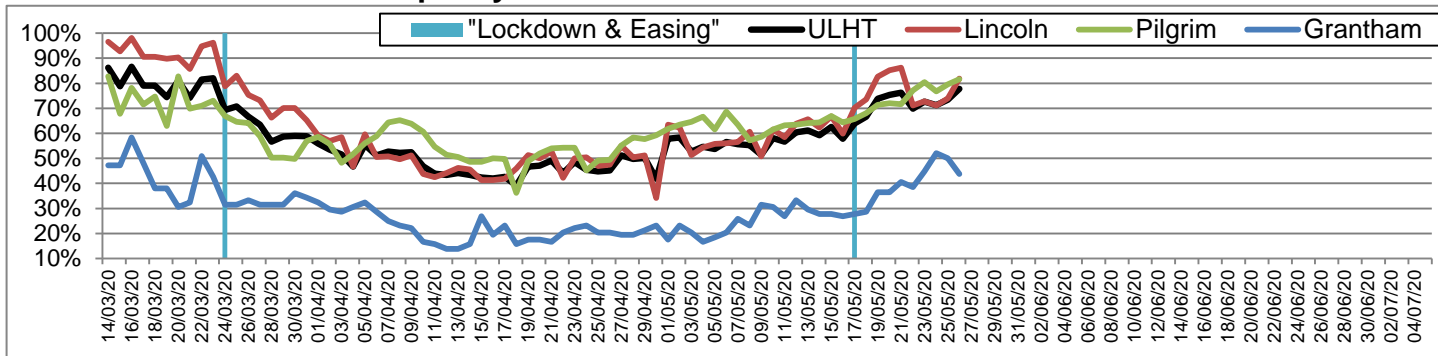
Delayed Transfer of Care	Site			
	GDH	LCH	PBH	ULHT
G&A Beds				
Total beds occupied	42	403	271	716
Occupied DToC	0	0	0	0
% occupied DToC	0.0%	0.0%	0.0%	0.0%

1b) Intensive/Critical Care

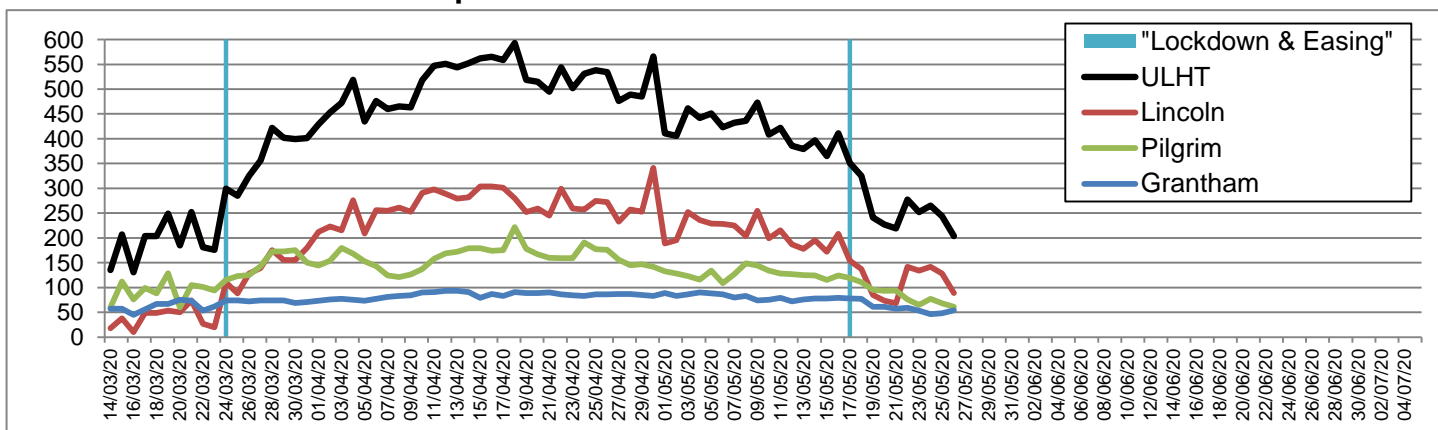
Occupancy	Site			
	GDH	LCH	PBH	ULHT
ADULT beds				
Total beds open	6	16	12	34
Total occupied	2	11	10	23
Total unoccupied	4	5	2	11
% occupied	33.3%	68.8%	83.3%	67.6%

Occupancy	Site			
	GDH	LCH	PBH	ULHT
NEONATAL beds				
Total beds open	0	15	8	23
Total occupied	0	13	6	19
% occupied	-	86.7%	75.0%	82.6%

General & Acute Bed Occupancy Rate



General & Acute Bed Unoccupied



Daily Urgent Care & Bed SitRep - ULHT

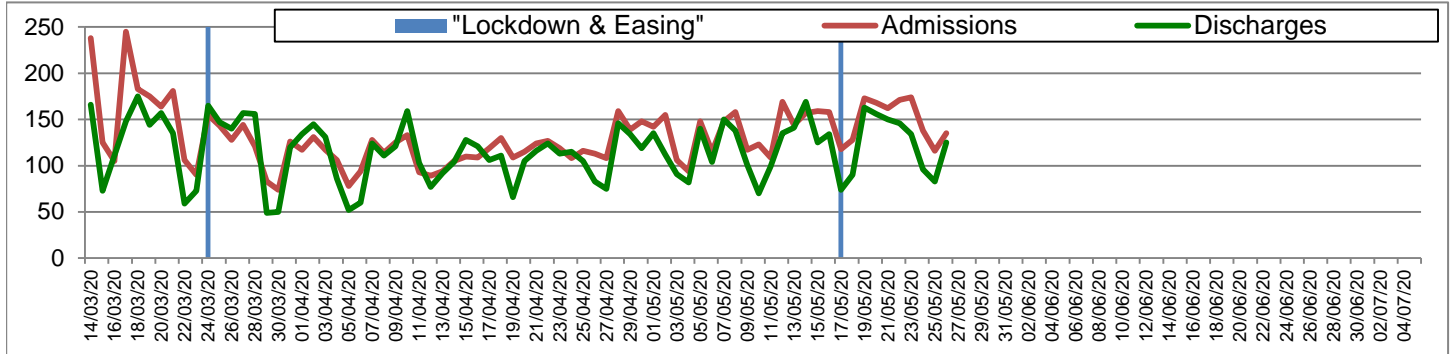
next update by 11:30am 27/05/2020

Tables 2) Inpatient Activity - Monday 25 May 2020 from 00:00 to 23:59

Inpatient	Site			
	GDH	LCH	PBH	ULHT
Admissions	6	75	54	135
Discharges	3	78	44	125
Net Flow	+3	-3	+10	+10

Admissions	Site			
	GDH	LCH	PBH	ULHT
Emergency - ALL	6	74	50	130
<i>Emergency via A&E</i>	5	69	44	118
Elective	0	1	4	5

ULHT Total Admissions vs Discharges



Tables 3) A&E Activity - Monday 25 May 2020 from 00:00 to 23:59

Type 1	Site			
	GDH	LCH	PBH	ULHT
Attendances	51	169	102	322
Over 4 hours	2	47	13	62
% under 4 hours	96.1%	72.2%	87.3%	80.7%

Type 3	Site			
	GDH	LCH	PBH	ULHT
Attendances	92	79	76	247
Over 4 hours	1	0	1	2
% under 4 hours	98.9%	100.0%	98.7%	99.2%

PCS	Site			
	GDH	LCH	PBH	ULHT
Attendances	0	79	76	155
Over 4 hours	0	0	1	1
% under 4 hours	-	100.0%	98.7%	99.4%

ALL Urgent Attends	Site			
	GDH	LCH	PBH	ULHT
Attendances	143	327	254	724
Over 4 hours	3	47	15	65
% under 4 hours	97.9%	85.6%	94.1%	91.0%

ULHT A&E and Front Door Attendances

