

Daily Urgent Care & Bed SitRep - ULHT

next update by 11:30am 28/05/2020

Tables 1) Current Bed Capacity - Wednesday 27 May 2020 at 8am

1a) General & Acute Beds

Occupancy	Site			
	GDH	LCH	PBH	ULHT
G&A Beds				
Total beds open	96	492	332	920
Total occupied	40	384	281	705
Total unoccupied	56	108	51	215
% occupied	41.7%	78.0%	84.6%	76.6%

Length Of Stay	Site			
	GDH	LCH	PBH	ULHT
G&A Beds				
Total beds occupied	40	384	281	705
Occupied LOS 7-20	13	102	80	195
Occupied LOS 21+	0	40	24	64
% occupied 7+ days	32.5%	37.0%	37.0%	36.7%

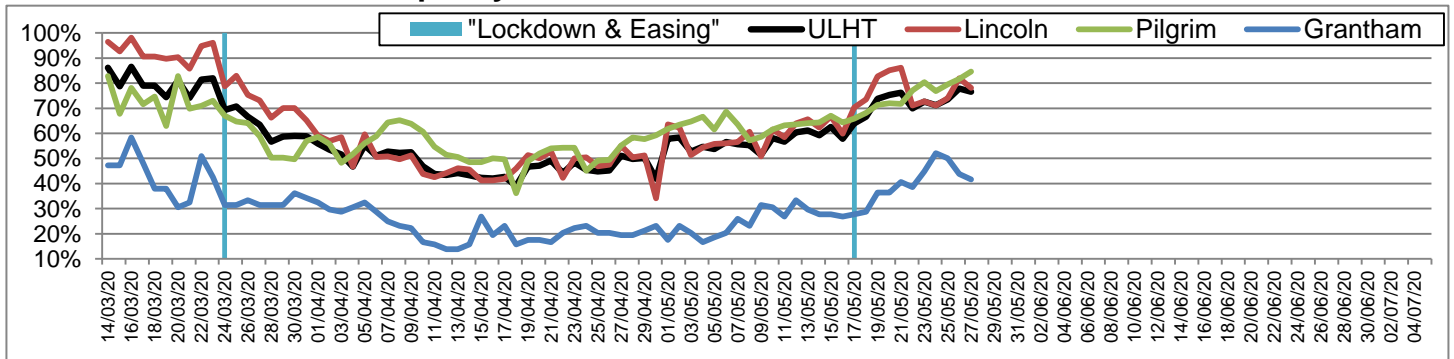
Delayed Transfer of Care	Site			
	GDH	LCH	PBH	ULHT
G&A Beds				
Total beds occupied	40	384	281	705
Occupied DToC	3	0	0	3
% occupied DToC	7.5%	0.0%	0.0%	0.4%

1b) Intensive/Critical Care

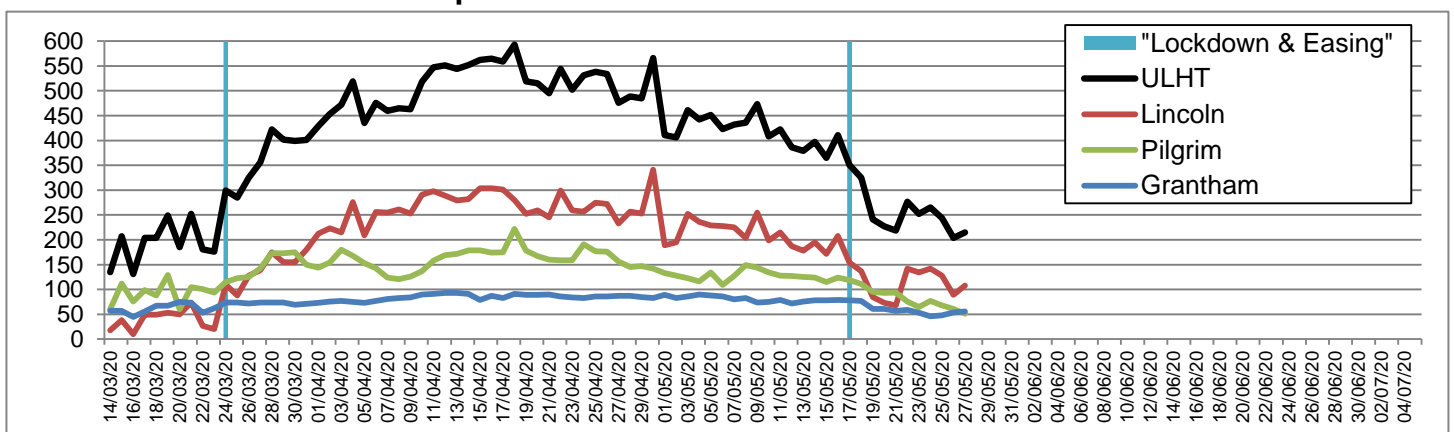
Occupancy	Site			
	GDH	LCH	PBH	ULHT
ADULT beds				
Total beds open	6	16	12	34
Total occupied	2	12	8	22
Total unoccupied	4	4	4	12
% occupied	33.3%	75.0%	66.7%	64.7%

Occupancy	Site			
	GDH	LCH	PBH	ULHT
NEONATAL beds				
Total beds open	0	15	8	23
Total occupied	0	13	4	17
% occupied	-	86.7%	50.0%	73.9%

General & Acute Bed Occupancy Rate



General & Acute Bed Unoccupied



Daily Urgent Care & Bed SitRep - ULHT

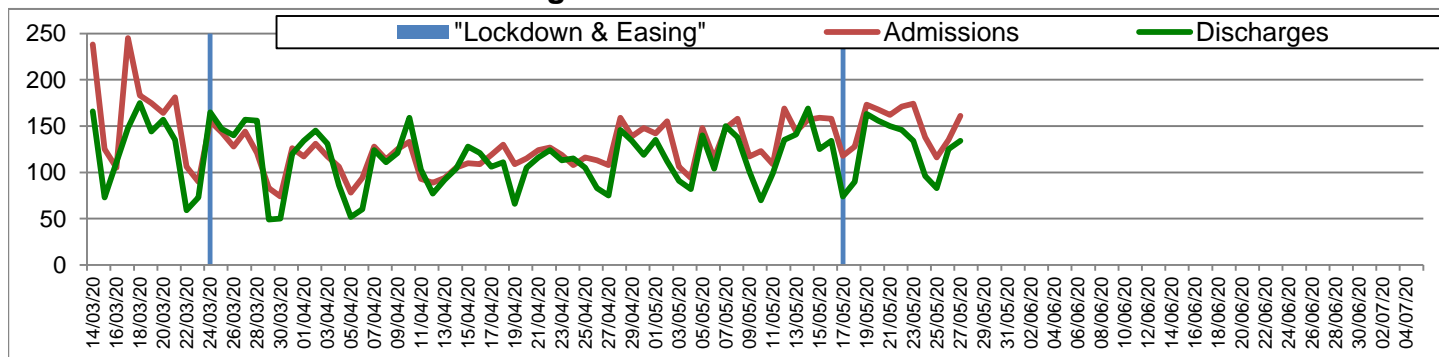
next update by 11:30am 28/05/2020

Tables 2) Inpatient Activity - Tuesday 26 May 2020 from 00:00 to 23:59

Inpatient	Site			
	GDH	LCH	PBH	ULHT
Admissions	6	92	63	161
Discharges	6	65	63	134
Net Flow	+0	+27	+0	+27

Admissions	Site			
	GDH	LCH	PBH	ULHT
Emergency - ALL	4	81	54	139
Emergency via A&E	3	64	43	110
Elective	2	11	9	22

ULHT Total Admissions vs Discharges



Tables 3) A&E Activity - Tuesday 26 May 2020 from 00:00 to 23:59

Type 1	Site			
	GDH	LCH	PBH	ULHT
Attendances	57	171	124	352
Over 4 hours	3	29	42	74
% under 4 hours	94.7%	83.0%	66.1%	79.0%

Type 3	Site			
	GDH	LCH	PBH	ULHT
Attendances	62	59	60	181
Over 4 hours	0	0	0	0
% under 4 hours	100.0%	100.0%	100.0%	100.0%

PCS	Site			
	GDH	LCH	PBH	ULHT
Attendances	0	59	60	119
Over 4 hours	0	0	0	0
% under 4 hours	-	100.0%	100.0%	100.0%

ALL Urgent Attends	Site			
	GDH	LCH	PBH	ULHT
Attendances	119	289	244	652
Over 4 hours	3	29	42	74
% under 4 hours	97.5%	90.0%	82.8%	88.7%

ULHT A&E and Front Door Attendances

