

Daily Urgent Care & Bed SitRep - ULHT

next update by 11:30am 20/06/2020

Tables 1) Current Bed Capacity - Friday 19 June 2020 at 8am

1a) General & Acute Beds

Occupancy	Site			
	GDH	LCH	PBH	ULHT
G&A Beds				
Total beds open	96	492	332	920
Total occupied	17	372	274	663
Total unoccupied	79	120	58	257
% occupied	17.7%	75.6%	82.5%	72.1%

Length Of Stay	Site			
	GDH	LCH	PBH	ULHT
G&A Beds				
Total beds occupied	17	372	274	663
Occupied LOS 7-20	5	90	73	168
Occupied LOS 21+	2	48	34	84
% occupied 7+ days	41.2%	37.1%	39.1%	38.0%

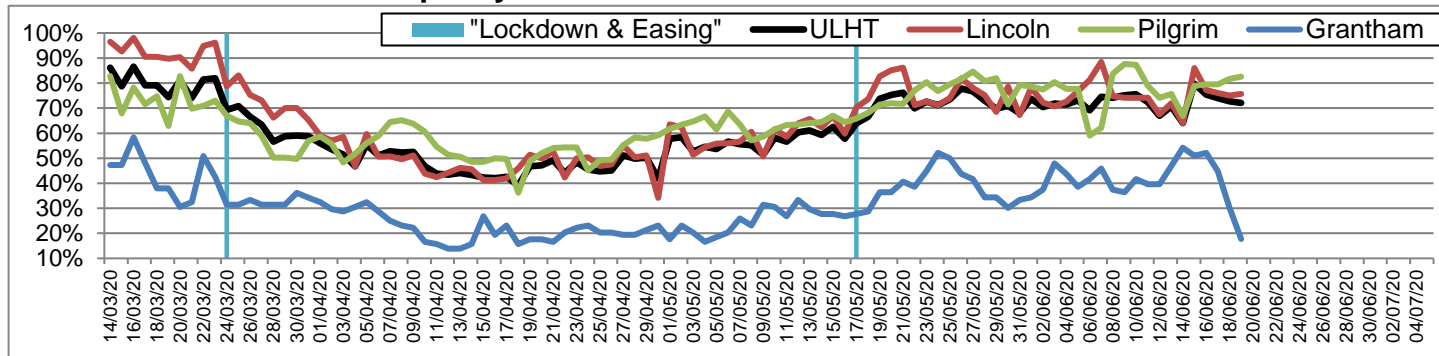
Delayed Transfer of Care	Site			
	GDH	LCH	PBH	ULHT
G&A Beds				
Total beds occupied	17	372	274	663
Occupied DToC	5	0	0	5
% occupied DToC	29.4%	0.0%	0.0%	0.8%

1b) Intensive/Critical Care

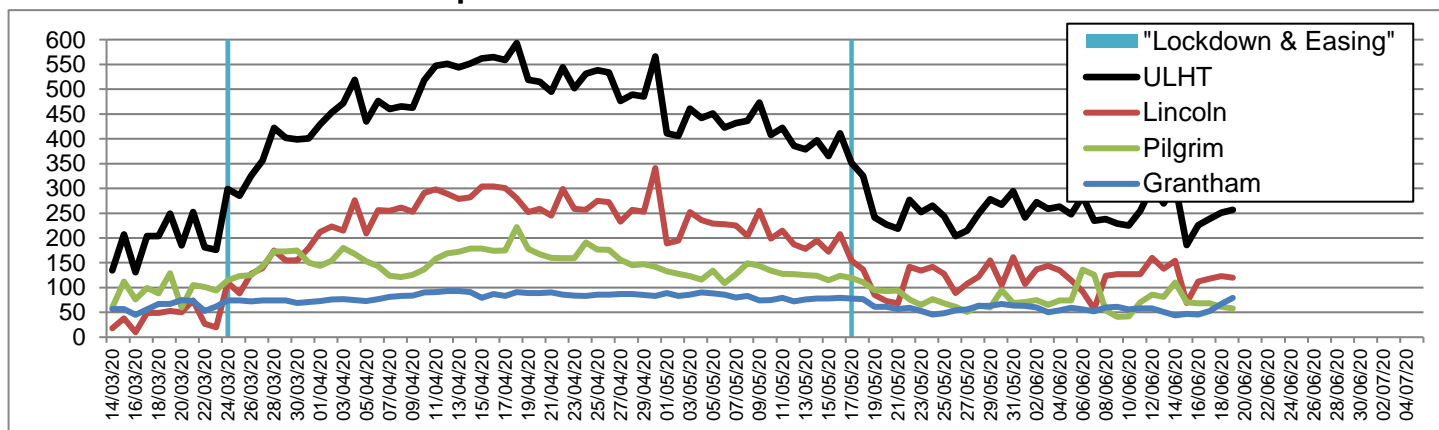
Occupancy	Site			
	GDH	LCH	PBH	ULHT
ADULT beds				
Total beds open	6	16	9	31
Total occupied	0	8	6	14
Total unoccupied	6	8	3	17
% occupied	0.0%	50.0%	66.7%	45.2%

Occupancy	Site			
	GDH	LCH	PBH	ULHT
NEONATAL beds				
Total beds open	0	15	8	23
Total occupied	0	7	4	11
% occupied	-	46.7%	50.0%	47.8%

General & Acute Bed Occupancy Rate



General & Acute Bed Unoccupied



Daily Urgent Care & Bed SitRep - ULHT

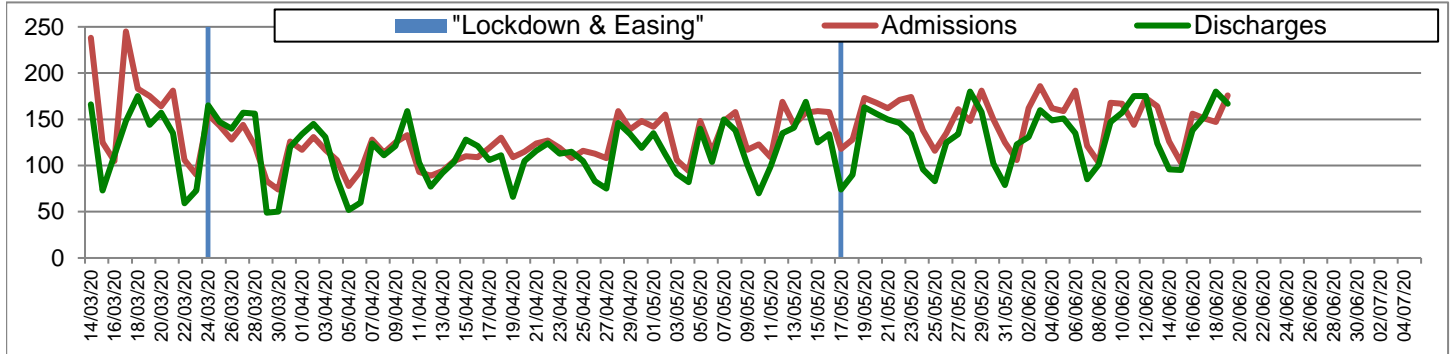
next update by 11:30am 20/06/2020

Tables 2) Inpatient Activity - Thursday 18 June 2020 from 00:00 to 23:59

Inpatient	Site			
	GDH	LCH	PBH	ULHT
Admissions	2	101	73	176
Discharges	9	96	62	167
Net Flow	-7	+5	+11	+9

Admissions	Site			
	GDH	LCH	PBH	ULHT
Emergency - ALL	1	88	66	155
<i>Emergency via A&E</i>	1	56	53	110
Elective	1	13	7	21

ULHT Total Admissions vs Discharges



Tables 3) A&E Activity - Thursday 18 June 2020 from 00:00 to 23:59

Type 1	Site			
	GDH	LCH	PBH	ULHT
Attendances	40	149	108	297
Over 4 hours	0	26	21	47
% under 4 hours	100.0%	82.6%	80.6%	84.2%

Type 3	Site			
	GDH	LCH	PBH	ULHT
Attendances	58	52	56	166
Over 4 hours	0	1	0	1
% under 4 hours	100.0%	98.1%	100.0%	99.4%

PCS	Site			
	GDH	LCH	PBH	ULHT
Attendances	0	52	56	108
Over 4 hours	0	1	0	1
% under 4 hours	-	98.1%	100.0%	99.1%

ALL Urgent Attends	Site			
	GDH	LCH	PBH	ULHT
Attendances	98	253	220	571
Over 4 hours	0	28	21	49
% under 4 hours	100.0%	88.9%	90.5%	91.4%

ULHT A&E and Front Door Attendances

