

Daily Urgent Care & Bed SitRep - ULHT

next update by 11:30am 27/06/2020

Tables 1) Current Bed Capacity - Friday 26 June 2020 at 8am

1a) General & Acute Beds

Occupancy	Site			
	GDH	LCH	PBH	ULHT
G&A Beds				
Total beds open	54	464	332	850
Total occupied	0	405	290	695
Total unoccupied	54	59	42	155
% occupied	0.0%	87.3%	87.3%	81.8%

Length Of Stay	Site			
	GDH	LCH	PBH	ULHT
G&A Beds				
Total beds occupied	0	405	290	695
Occupied LOS 7-20	0	108	73	181
Occupied LOS 21+	0	53	35	88
% occupied 7+ days	-	39.8%	37.2%	38.7%

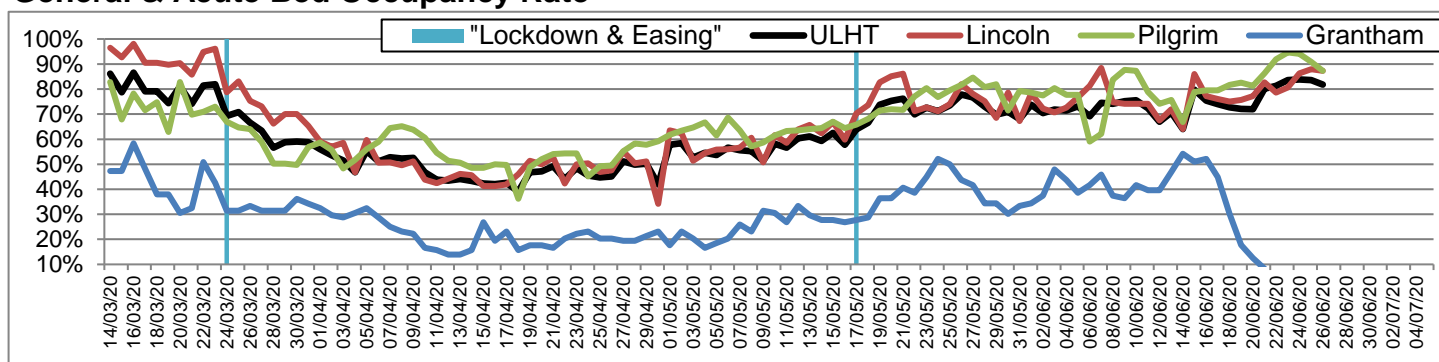
Delayed Transfer of Care	Site			
	GDH	LCH	PBH	ULHT
G&A Beds				
Total beds occupied	0	405	290	695
Occupied DToC	0	0	0	0
% occupied DToC	-	0.0%	0.0%	0.0%

1b) Intensive/Critical Care

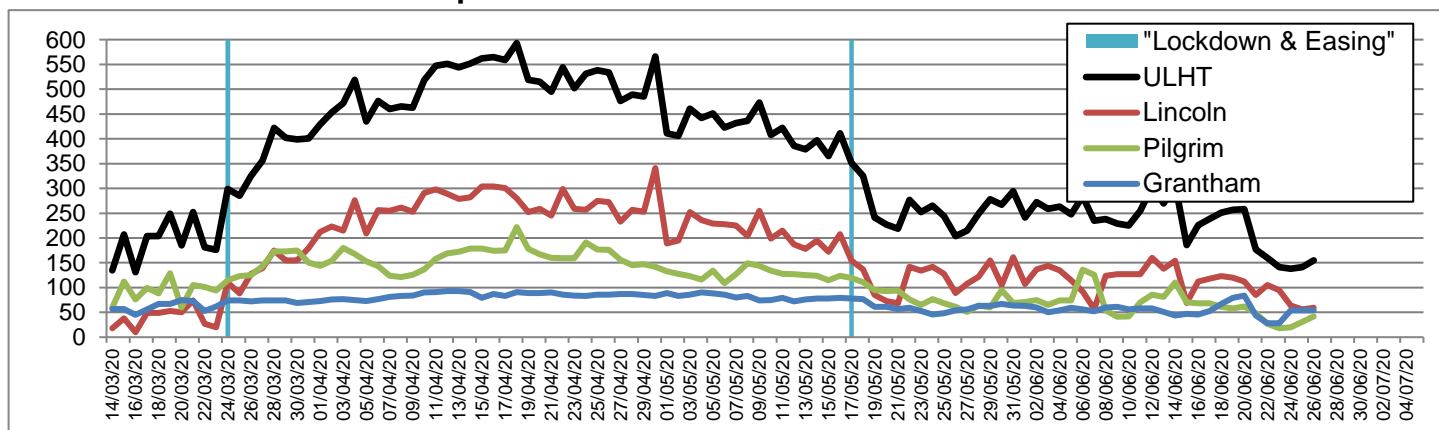
Occupancy	Site			
	GDH	LCH	PBH	ULHT
ADULT beds				
Total beds open	6	16	9	31
Total occupied	0	12	6	18
Total unoccupied	6	4	3	13
% occupied	0.0%	75.0%	66.7%	58.1%

Occupancy	Site			
	GDH	LCH	PBH	ULHT
NEONATAL beds				
Total beds open	0	15	8	23
Total occupied	0	11	3	14
% occupied	-	73.3%	37.5%	60.9%

General & Acute Bed Occupancy Rate



General & Acute Bed Unoccupied



Daily Urgent Care & Bed SitRep - ULHT

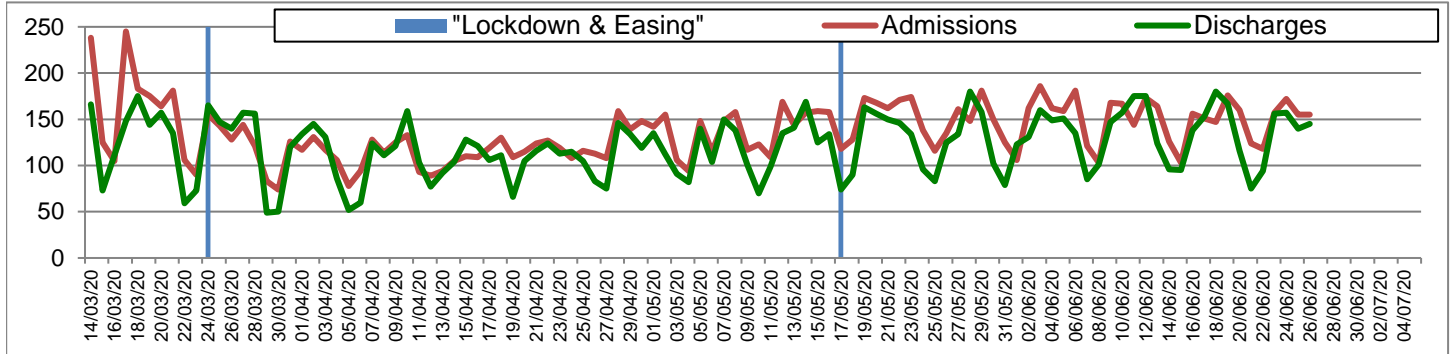
next update by 11:30am 27/06/2020

Tables 2) Inpatient Activity - Thursday 25 June 2020 from 00:00 to 23:59

Inpatient	Site			
	GDH	LCH	PBH	ULHT
Admissions	0	96	59	155
Discharges	0	86	59	145
Net Flow	+0	+10	+0	+10

Admissions	Site			
	GDH	LCH	PBH	ULHT
Emergency - ALL	0	89	53	142
<i>Emergency via A&E</i>	0	66	46	112
Elective	0	7	6	13

ULHT Total Admissions vs Discharges



Tables 3) A&E Activity - Thursday 25 June 2020 from 00:00 to 23:59

Type 1	Site			
	GDH	LCH	PBH	ULHT
Attendances	0	168	94	262
Over 4 hours	0	46	9	55
% under 4 hours	-	72.6%	90.4%	79.0%

Type 3	Site			
	GDH	LCH	PBH	ULHT
Attendances	130	62	55	247
Over 4 hours	0	0	0	0
% under 4 hours	100.0%	100.0%	100.0%	100.0%

PCS	Site			
	GDH	LCH	PBH	ULHT
Attendances	0	62	55	117
Over 4 hours	0	0	0	0
% under 4 hours	-	100.0%	100.0%	100.0%

ALL Urgent Attends	Site			
	GDH	LCH	PBH	ULHT
Attendances	130	292	204	626
Over 4 hours	0	46	9	55
% under 4 hours	100.0%	84.2%	95.6%	91.2%

ULHT A&E and Front Door Attendances

