

Daily Urgent Care & Bed SitRep - ULHT

next update by 11:30am 18/07/2020

Tables 1) Current Bed Capacity - Friday 17 July 2020 at 8am

1a) General & Acute Beds

Occupancy	Site			
	GDH	LCH	PBH	ULHT
G&A Beds				
Total beds open	56	529	344	929
Total occupied	17	471	287	775
Total unoccupied	39	58	57	154
% occupied	30.4%	89.0%	83.4%	83.4%

Length Of Stay	Site			
	GDH	LCH	PBH	ULHT
G&A Beds				
Total beds occupied	17	471	287	775
Occupied LOS 7-20	0	122	99	221
Occupied LOS 21+	0	42	25	67
% occupied 7+ days	0.0%	34.8%	43.2%	37.2%

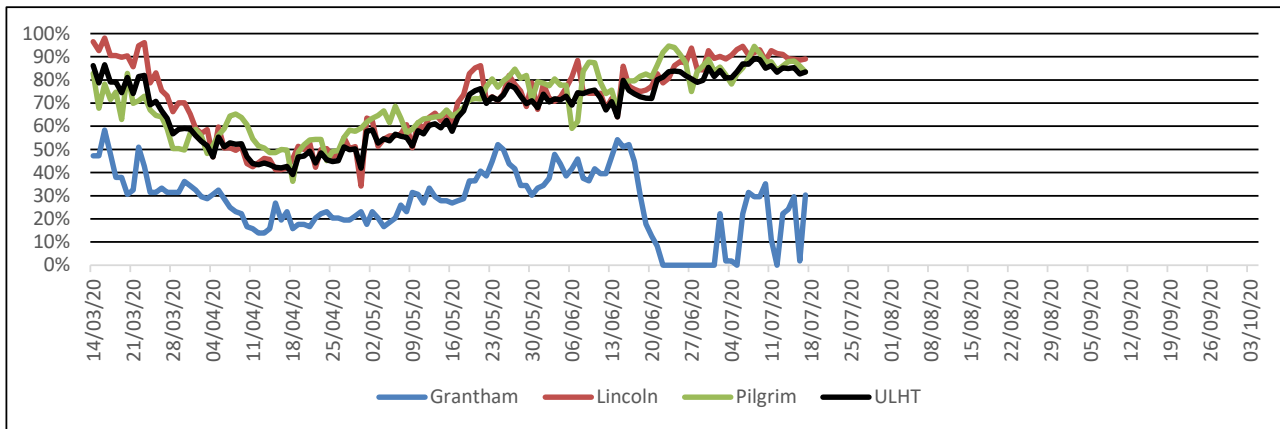
Delayed Transfer of Care	Site			
	GDH	LCH	PBH	ULHT
G&A Beds				
Total beds occupied	17	471	287	775
Occupied DToC	0	0	0	0
% occupied DToC	0.0%	0.0%	0.0%	0.0%

1b) Intensive/Critical Care

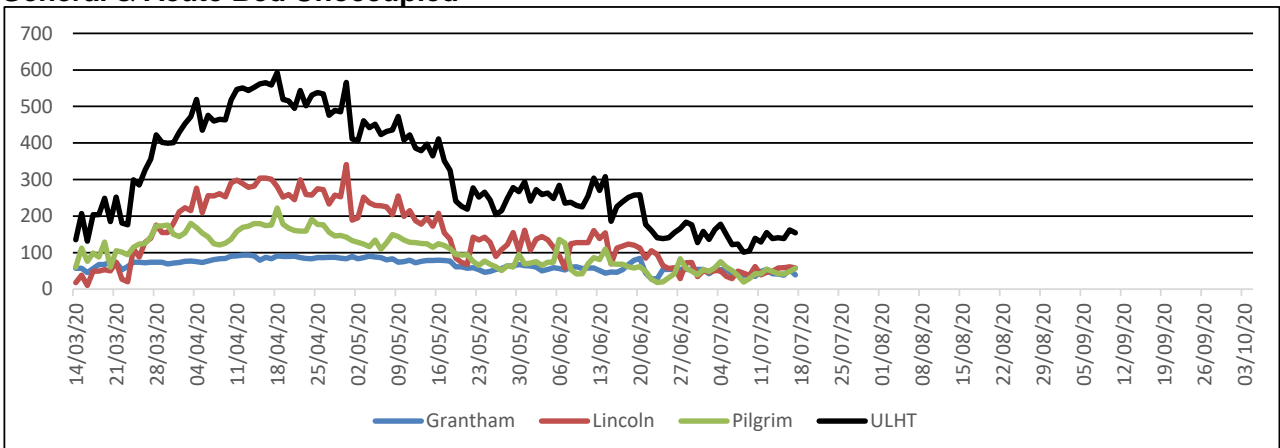
Occupancy	Site			
	GDH	LCH	PBH	ULHT
ADULT beds				
Total beds open	6	16	9	31
Total occupied	0	6	5	11
Total unoccupied	6	10	4	20
% occupied	0.0%	37.5%	55.6%	35.5%

Occupancy	Site			
	GDH	LCH	PBH	ULHT
NEONATAL beds				
Total beds open	0	15	8	23
Total occupied	0	10	2	12
% occupied	-	66.7%	25.0%	52.2%

General & Acute Bed Occupancy Rate



General & Acute Bed Unoccupied



Daily Urgent Care & Bed SitRep - ULHT

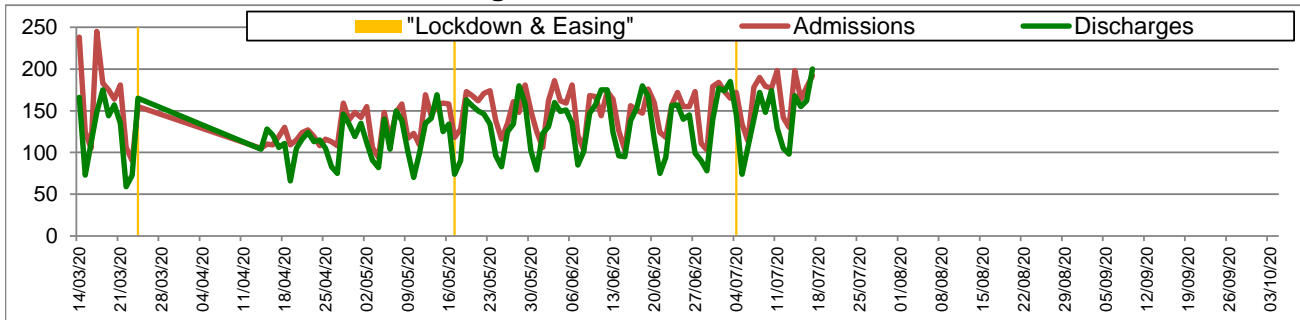
next update by 11:30am 18/07/2020

Tables 2) Inpatient Activity - Thursday 16 July 2020 from 00:00 to 23:59

Inpatient	Site			
	GDH	LCH	PBH	ULHT
Admissions	15	104	73	192
Discharges	7	111	82	200
Net Flow	+8	-7	-9	-8

Admissions	Site			
	GDH	LCH	PBH	ULHT
Emergency - ALL	0	99	67	166
<i>Emergency via A&E</i>	0	72	58	130
Elective	15	5	6	26

ULHT Total Admissions vs Discharges



Tables 3) A&E Activity - Thursday 16 July 2020 from 00:00 to 23:59

Type 1	Site			
	GDH	LCH	PBH	ULHT
Attendances	0	210	126	336
Over 4 hours	0	66	32	98
% under 4 hours	-	68.6%	74.6%	70.8%

Type 3	Site			
	GDH	LCH	PBH	ULHT
Attendances	183	59	67	309
Over 4 hours	2	0	4	6
% under 4 hours	98.9%	100.0%	94.0%	98.1%

PCS	Site			
	GDH	LCH	PBH	ULHT
Attendances	0	59	67	126
Over 4 hours	1	0	4	5
% under 4 hours	-	100.0%	94.0%	96.0%

ALL Urgent Attends	Site			
	GDH	LCH	PBH	ULHT
Attendances	183	328	260	771
Over 4 hours	3	66	40	109
% under 4 hours	98.4%	79.9%	84.6%	85.9%

ULHT A&E and Front Door Attendances

