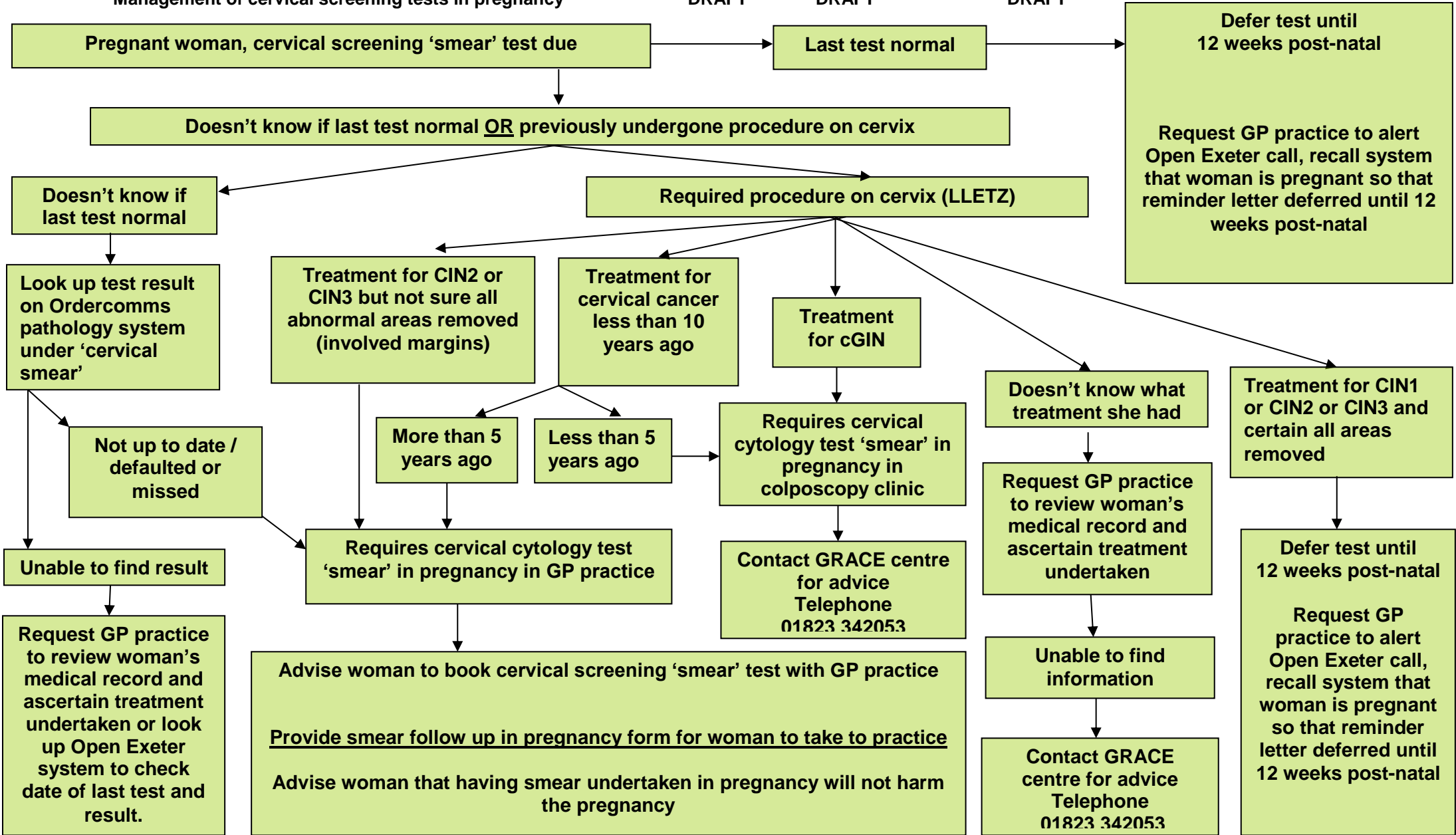


Management of cervical screening tests in pregnancy

DRAFT

DRAFT

DRAFT



If there are any queries that do not fit into this flowchart please contact GRACE centre for advice Telephone 01823 342053

LLETZ = Large Loop Excision of the Transformation Zone  
 CIN = cervical intraepithelial neoplasia (1 = low grade, 2 or 3 = high grade)  
 cGIN = cervical glandular intraepithelial neoplasia

