



## Wokingham Primary Care Networks The 5 I's

*Infrastructure, Intelligence, Interventions, Innovation and  
Incentives - leading us to Integration*

# Dr Amit Sharma



# Background



- 165,000 patients
- 190,000 by 2026
- Life expectancy 84.5 years for women and 81.6 years for men
- 12% BME, rising to 32% of school population
- High proportion of children and adults of working age (35-55)

# The history towards the development of PCN



# Wokingham Vision for Primary Care Networks

*‘to keep the residents of Wokingham fit, well and living as independently as they can be in their own homes for as long as possible by working as a single health and social care system that supports people, promotes self-care and prevention and **ultimately makes the most effective use of all resources in the system**’*

# Wokingham Framework for PCN



## Infrastructure

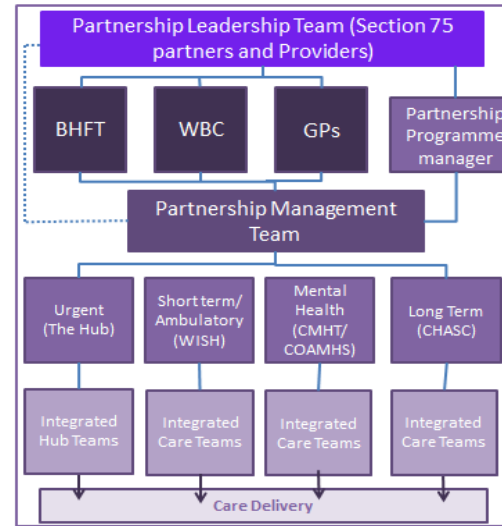
1. Better Care Fund
2. Berkshire West Integrated Care System
3. Development of GP Alliances



## Intelligence

1. Connected care programme
2. Risk stratification

### Phase 1



#### Leadership Team

Partnership Leadership Team (PLT) meets monthly  
Extraordinary meetings can be called to respond to:

- Commissioner requests
- Provider concerns
- Changes to the contract or structure

Representatives hold delegated decision rights for their organisation  
Will develop the TOR for PLT and PMT

#### PLT Group members

Exec member of each Commissioner  
Exec. member of each provider  
GP Exec from Wokingham GP Provider Alliance

#### Management Team

Heads of pathways should have significant operational experience and/or clinical knowledge  
Programme Manager will track performance against both care and financial outcomes, to report to ALT and identify opportunities for improvement for ICTs

# Wokingham Framework for PCN



## Interventions & Innovation

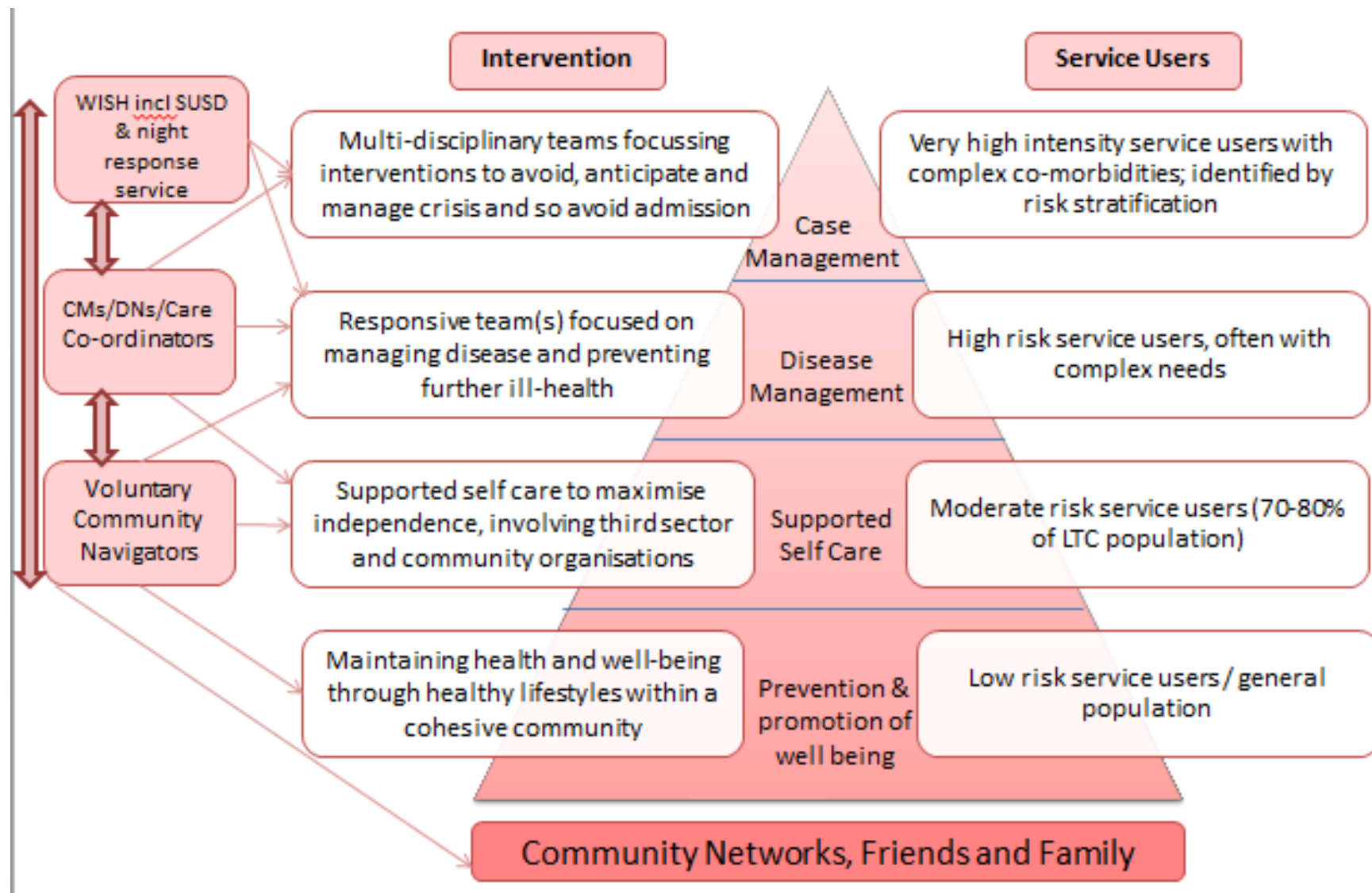
- MDTs
- Paramedic Visiting
- GP Consultant Model



## Incentives (Funding and risk)

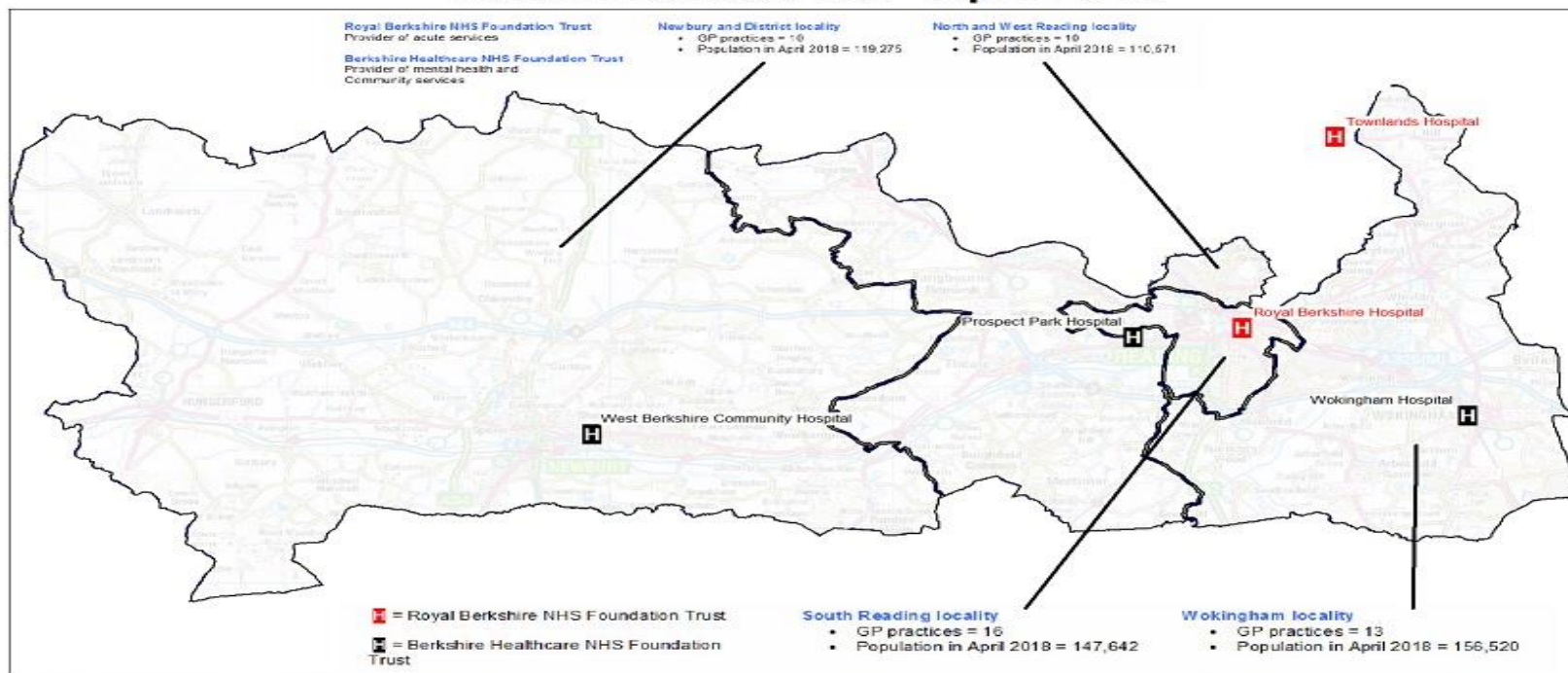
- Risk share
- Utilisation of existing CES/agreements

# Wokingham PCN Pyramid of Need



# Berkshire West Primary Care Alliance (Total resident population 528,000)

## Berkshire West ICS - April 2018



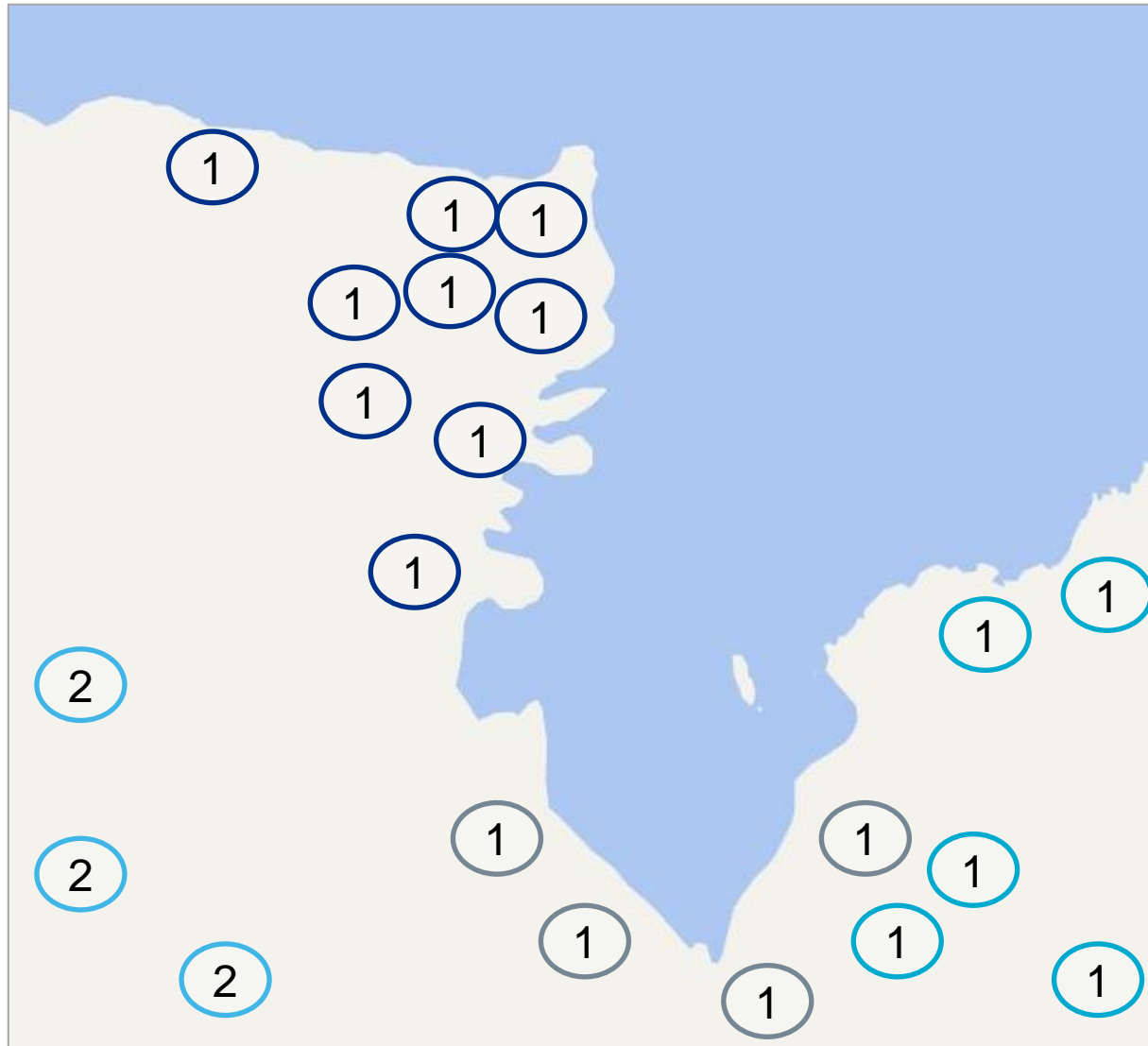
BerksW\_IC\_S\_0418\_r1.wor 26/04/2018 Sid Beauchant BHFT

© Crown Copyright and database rights - 2018 OS 100051367. All rights reserved. NAVTEQ data by permission of NAVTEQ Corporation Licence No. NVMM0611, NVMM0612) GeoPlan data by permission of Geoplan (Licence No. GPKW9912)





# Location and maturity of PCNs by practices – April 2018



## Key

### Practices by network

- Newbury network
- SR Network
- N& W network
- Wokingham network

### Maturity of networks

<b>Foundation</b>	0
Step 1	3
Step 2	1
Step 3	0