

Surrey Junior Cricket Championship Update Webinar

Supporting and Improving Our Game

Wednesday 25th September



SURREY
CRICKET
FOUNDATION

Welcome, Housekeeping & Introductions

- The Technology!
- Who will you hear from this evening?
 - Simon Hards – SCF Participation Manager
 - Sean Keaton – SJCC Chair
 - Phil Everest – SJCC Vice Chair
 - Sarah Lynch – SCF Competition Officer
 - Dave Walter – Strategic Lead Transition
- Tonight's agenda
 - Culture
 - Governance
 - What do I need to know as a Club
 - Formats
 - Entry Process
 - Actions for Clubs
 - Questions



SURREY
CRICKET
FOUNDATION

A Brief History

- 18 month journey to base camp!
- ECB Format Changes a Catalyst
- Working Group Formed
- Consultation
 - League AGMs
 - Club Forums
 - [Prospectus](#)
 - Survey Monkey
 - Consultation Evenings



Culture

- Put the player first
- Get the game on!
- Be inclusive – every player should participate
- Deliver evenly matched games of cricket
- Challenge – when others aren't living the culture
- Communicate the ethos within clubs
- Be fair and embody The Spirit of Cricket

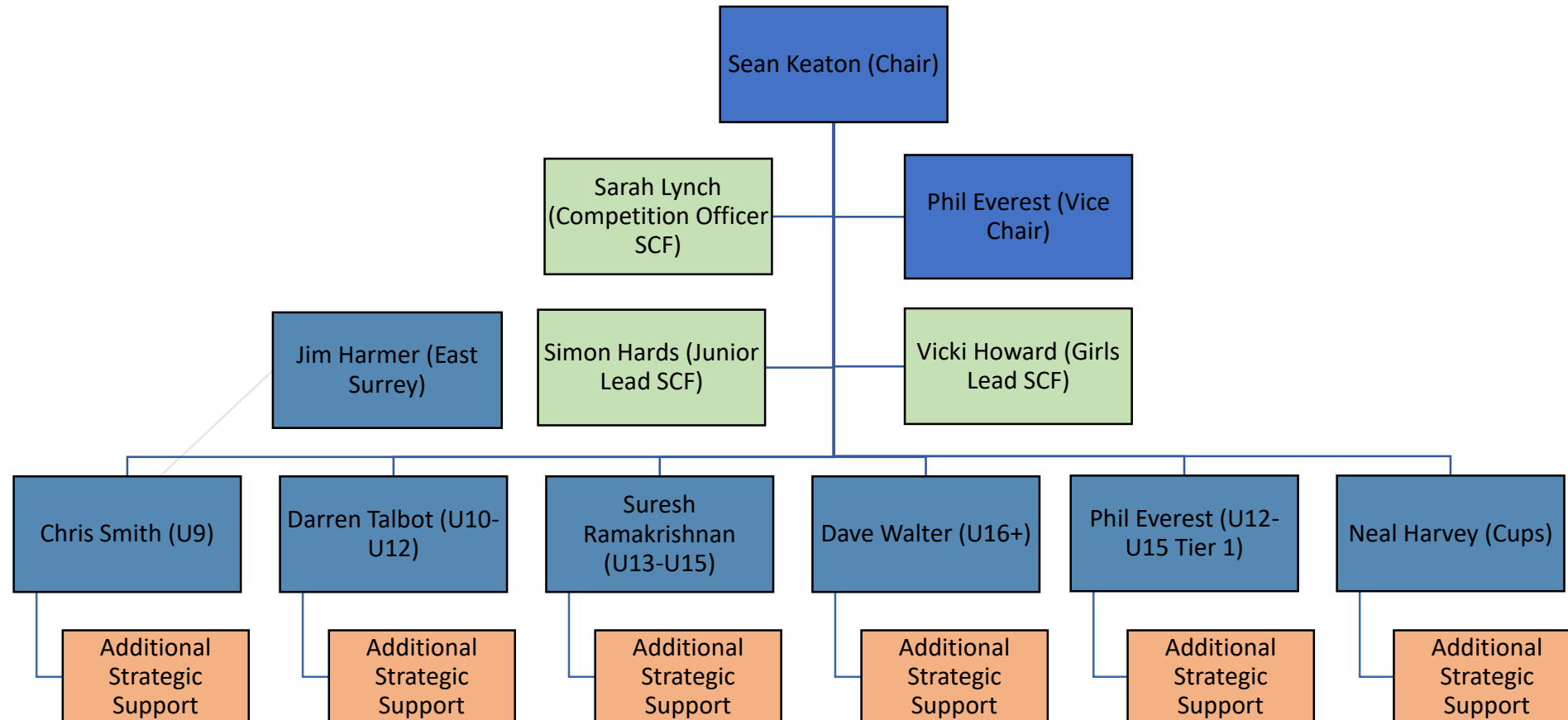


The Constitution

- Accountable to the Surrey Cricket Foundation
- Emphasis on volunteers
- Not a members' organisation
- Focus on consultative approach
- Aim to have a broad representation on the management team reflective of the county



Management Team Structure



What I need to know as a Club?

- Playing Formats
 - Amalgamation of 6 existing leagues
 - Playing Formats are set for 2020
 - Transition from old to new
 - Same playing opportunities as last year
- A Few Changes...
 - U16 and U17 Competitions
 - Cups U11-U15



What I need to know as a Club?

- Entry Process
 - Online entry process for all leagues and cups
 - Clubs will have their own login
 - Single point of contact required from each club
 - Guidance and support
 - £20 per team, £10 for Cups



Action Required - Club Play Cricket Site

- About Us
 - [These Officials must be added with contact details:](#)
 - Welfare Officer
 - Junior Coordinator (single point of contact for fixtures admin)
- Playing Facilities
 - Names of pitches that will host Junior matches
- Team Names
 - Names of all junior teams
 - Different name for each team that will be entered (e.g. cannot enter two teams called 'Under 12')
 - Preferably descriptive of level (e.g. Under 12 A, Under 12 B etc)



What I need to know

- Timelines
 - Information from this evening circulated w/c 30th Sept
 - Guidance on entries released w/c 7th Oct
 - Entries open w/c 4th November
 - Entries close 2nd December
 - Fixtures published 31 January
 - Fixture dates locked 31 March



SURREY
CRICKET
FOUNDATION

Welfare Requirements

- ECB Direction of Travel
- Clubmark Vision
- [Welfare Officer Expectation](#)
 - Fully trained Club Welfare Officer
 - DBS
 - Safeguarding
 - Safe Hands



Contacts

- Sarah Lynch – Competition Officer
 - slynch@surreycricket.com
 - 07776 295206
- Simon Hards – Participation Manager
 - shards@surreycricket.com
 - 07824 866804



SURREY
CRICKET
FOUNDATION

Thank You

Questions?



**SURREY
CRICKET
FOUNDATION**