



# OXFORDSHIRE RFU NEWSLETTER

JULY  
2019

## WELCOME TO OUR SECOND EDITION!



### WHAT IS A RFU CONSTITUENT BODY?

RFU Constituent Bodies are the only administrative bodies which operate between the national governing body and the member clubs. They are able to provide significant development support to their member clubs and therefore clubs should ensure that they develop good links with the different functions of the CB.

A CB, alongside the RFU regional rugby delivery team, will be able to offer support and guidance in the following areas:

- **Discipline**
- **Coach development**
- **Facility development**
- **Safeguarding children and vulnerable adults**
- **Club finance and funding**
- **Representative rugby and schools of rugby**

There are 28 county CBs, e.g. Oxfordshire, and seven non-geographical CBs, including the Students RFU and the Army RFU, to which all clubs, schools, colleges and universities are allocated.

The Oxfordshire Rugby Football Union is the governing body for the sport of rugby union in the county of Oxfordshire in England. The union is the constituent body of the Rugby Football Union (RFU) for Oxfordshire, and administers and organises rugby union clubs and competitions in the county. It also administers the Oxfordshire county rugby representative teams.

### RUGBY WORLD CUP BLACK TIE EVENT

Oxfordshire RFU are holding a special **Rugby World Cup Black Tie Event** and you're invited. It is being held at the Double Tree by Hilton in Thame on **Friday 6th September 2019**. Tickets are **£85** and includes arrival drink, 3 course dinner, live music and a disco. We have even got Martin Bayfield and James Haskell as guest speakers. To book tickets please contact Karen East, County Secretary, ORFU, **07791 064047** or **kazaeast@gmail.com**.

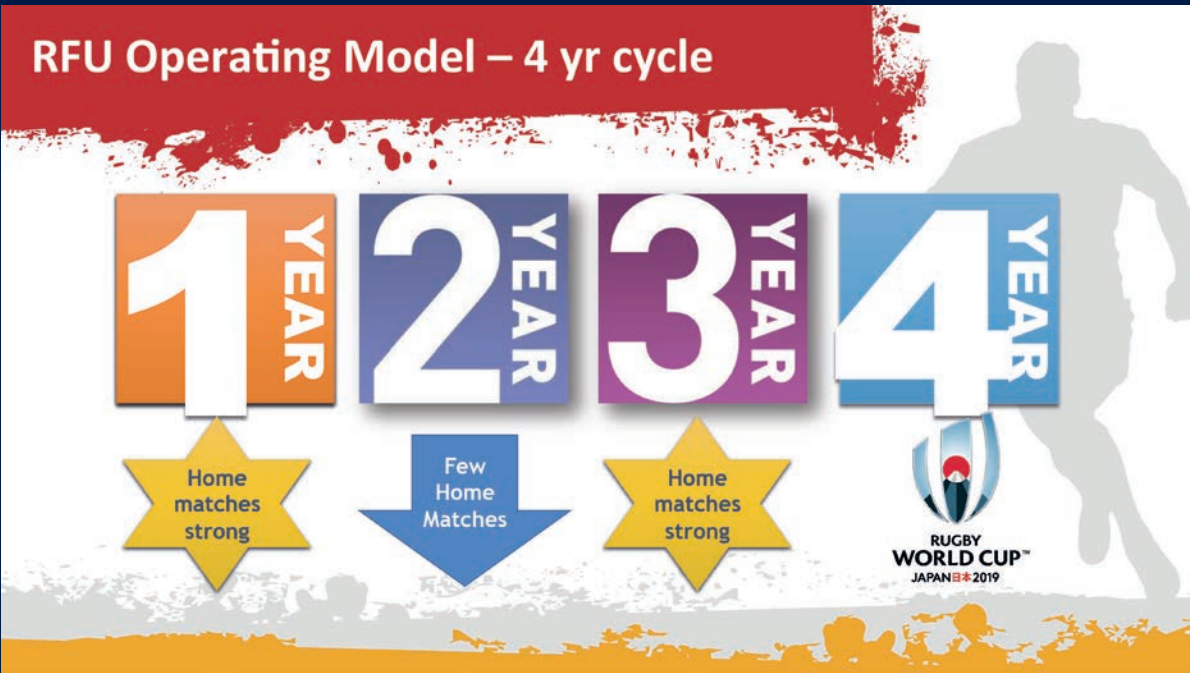
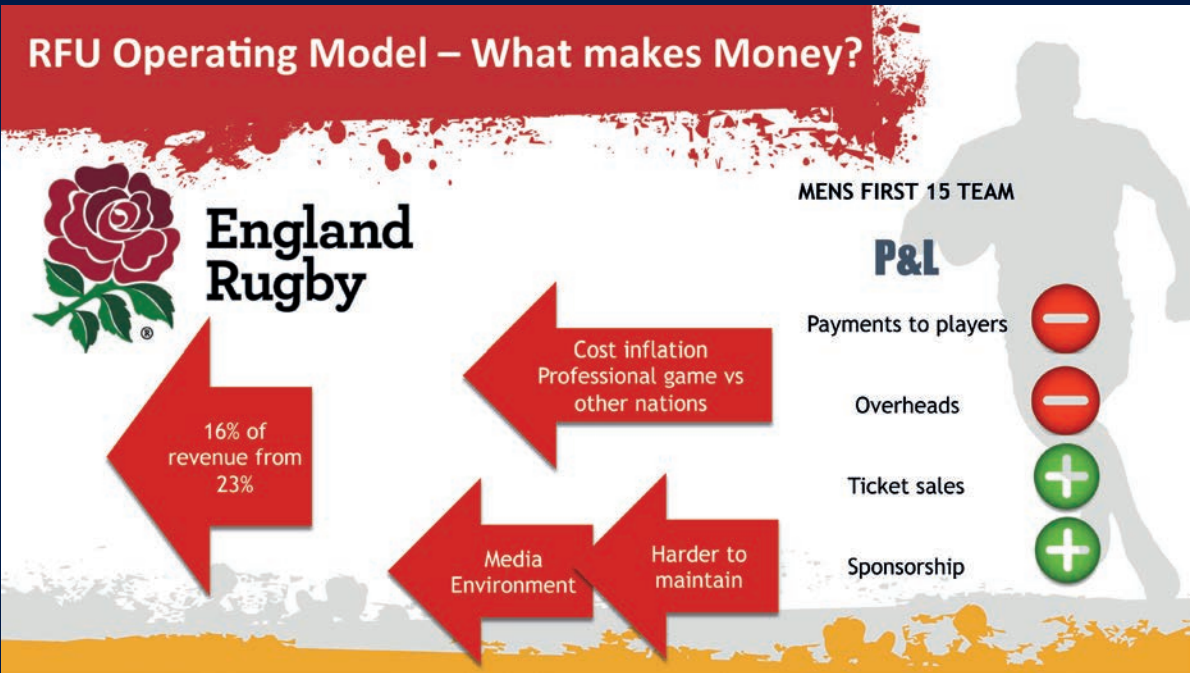




# RFU OPERATING MODEL

Ever wondered how it worked within the RFU and read perhaps too many news articles, please find below some simple elements of the RFU operating model which highlights the ever growing cost of maintaining a men's and women's first class sides as well as develop the community game.

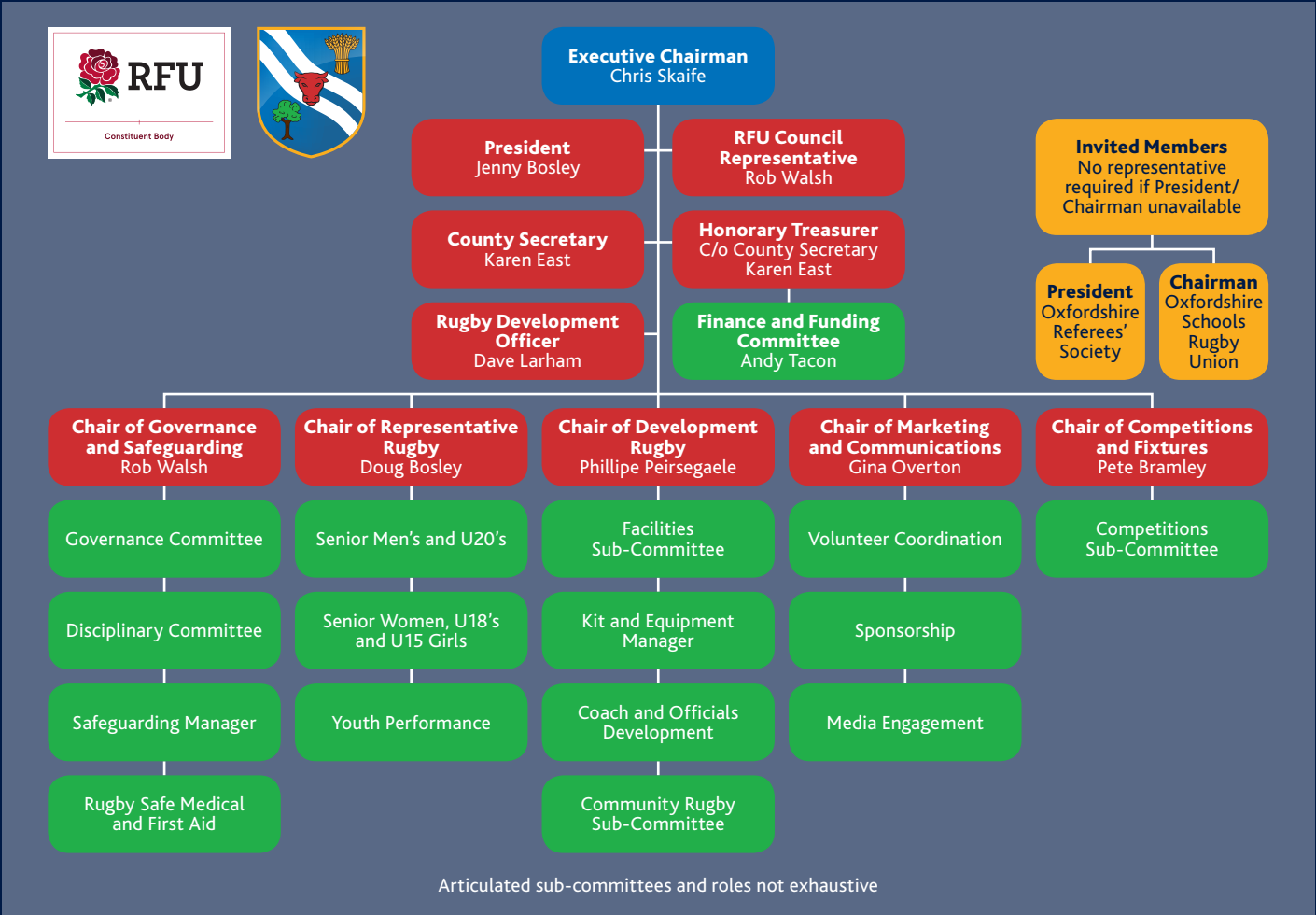
Any questions please ask for more info as happy to help...



## RFU Operating Model – Fixed & capital spending under control



## OXFORDSHIRE RFU EXECUTIVE BOARD



EXEC BOARD KEY FOCUS AREAS FOR 2019/20 – RESULTING FROM THE CLUB SURVEY FEEDBACK

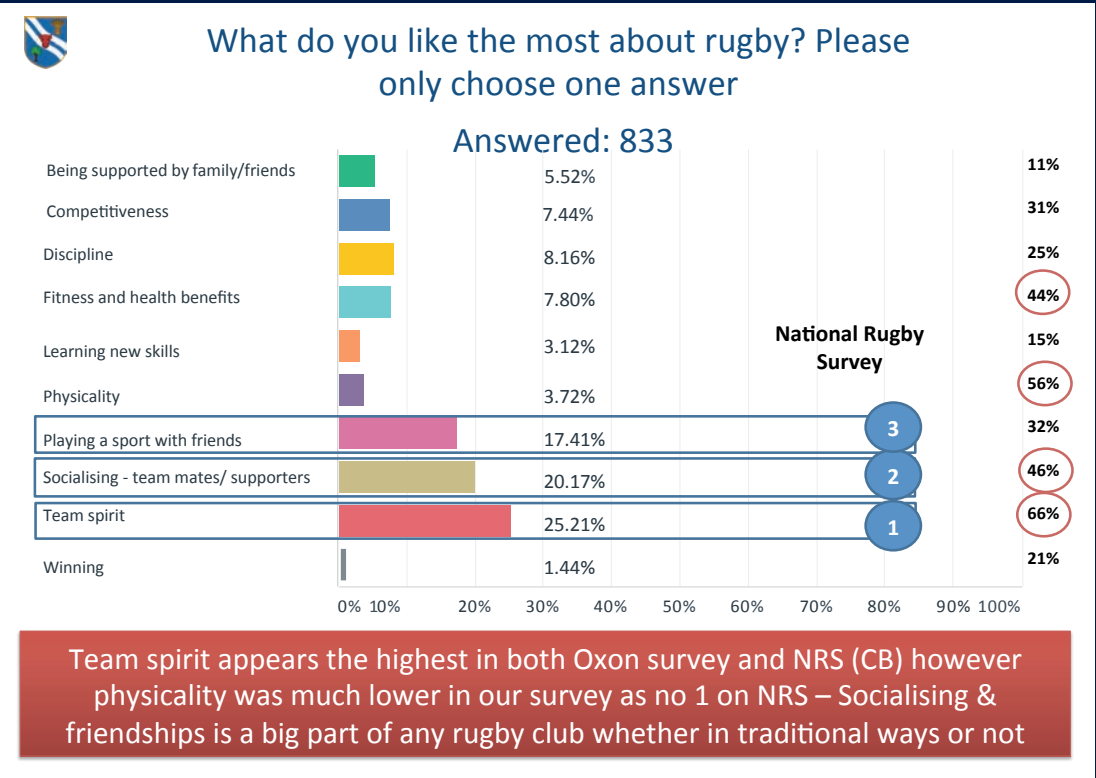


What concerns do you currently have regarding your rugby experience? Please grade for each section your view with strongly agree being the most important to you.

Answered: 584

	AMOUNT OF ADMIN	BEHAVIOUR ON PITCH BY PLAYERS	BEHAVIOUR ON TOUCHLINE	COMPETITIVENESS OF MATCHES	CLUB CULTURE	CODE OF RUGBY	INJURIES	QUALITY OF THE OFF FIELD FACILITIES	QUALITY OF REFEREEING	TRAVEL TIMES	I HAVE NO CONCERNS	TOTAL RESPONSES
Strongly agree	6.21% 29	15.20% 71	13.70% 64	8.78% 41	18.63% 87	16.49% 77	24.41% 114	13.70% 64	26.98% 126	9.64% 45	29.55% 138	467
Agree	16.24% 77	15.61% 74	18.99% 90	16.24% 77	16.67% 79	11.81% 56	25.32% 120	22.57% 107	23.42% 111	16.03% 76	22.57% 107	474
Neither agree nor disagree	43.32% 188	22.81% 99	21.66% 94	27.42% 119	15.90% 69	20.51% 89	23.73% 103	23.73% 103	20.51% 89	33.64% 146	37.79% 164	434
Disagree	11.11% 38	28.95% 99	25.15% 86	23.10% 79	24.27% 83	21.64% 74	9.65% 33	16.08% 55	15.20% 52	18.42% 63	37.13% 127	342
Strongly disagree	9.85% 27	13.87% 38	13.50% 37	13.50% 37	21.53% 59	19.34% 53	5.47% 15	9.49% 26	6.20% 17	9.12% 25	54.38% 149	274
Agree	106	145	154	118	166	127	234	171	231	122	245	
Disagree	65	137	117	116	142	127	48	81	69	88	276	
Neither Agree or Disagree	188	99	94	119	60	89	103	103	80	146	164	
		2 <sup>nd</sup> STRONGEST DISAGREE BEHAVIOUR ON PITCH			1 <sup>st</sup> STRONGEST DISAGREE CLUB CULTURE		1 <sup>st</sup> STRONGEST AGREE INJURIES		2 <sup>nd</sup> STRONGEST AGREE INJURIES		Interesting number of NO concerns	

OXON RFU SURVEY RESULTS



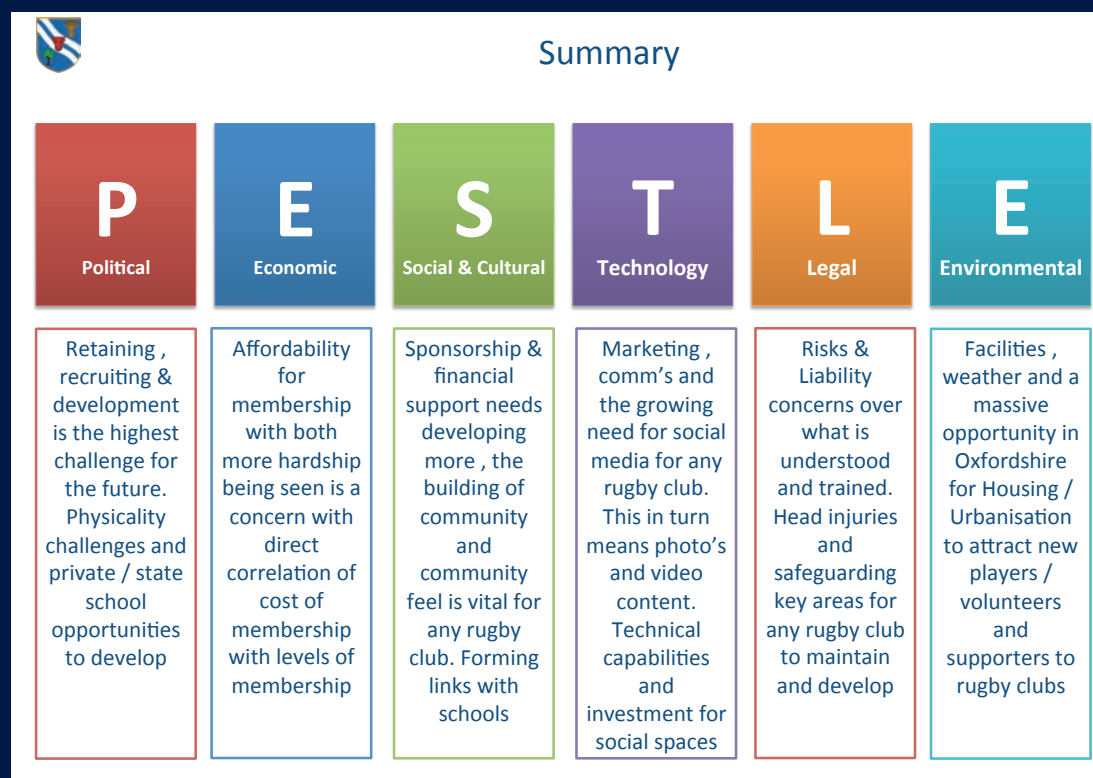
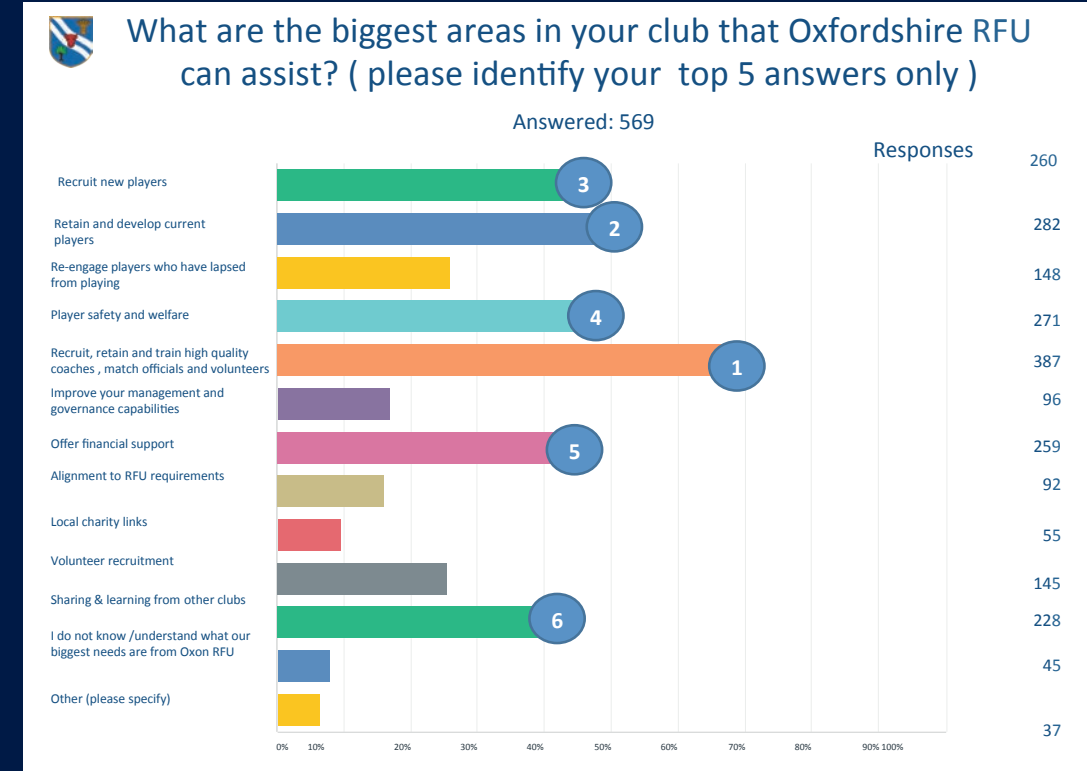
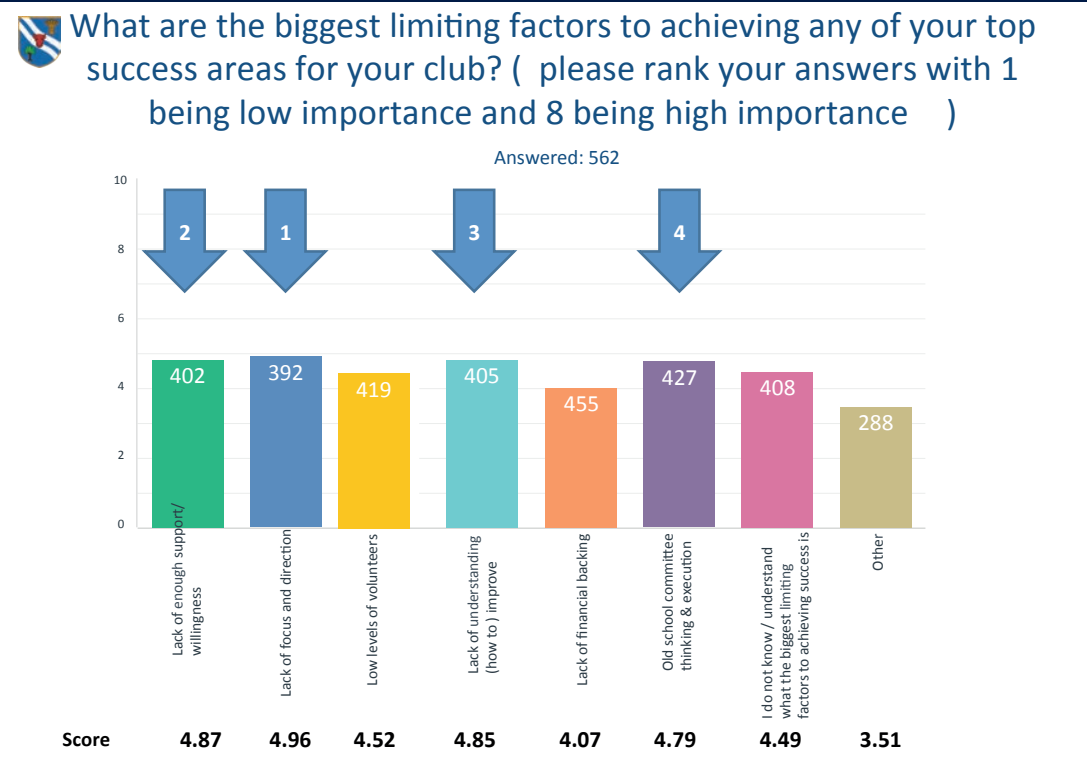
What does success look like for your club? ( choose the top 5 statements relevant to you and/or your club )

Answered: 589

ANSWER CHOICES	RESPONSES	
Winning for all teams	16.30%	96
Building & developing all teams	81.15%	478
Attracting more players for all teams	64.18%	378
Gaining more sponsorship	17.66%	104
Building community links	34.97%	206
Developing & implementing a clear strategic plan for the future	31.07%	183
Creating improved bar facilities and social spaces	13.24%	78
Developing facilities around playing fields	22.92%	135
Build awareness and market our club	18.68%	110
Enjoyment of the game	66.38%	391
Transition of junior players into senior squads	49.58%	292
Investment in Volunteer workforce - Qualifications and training	13.58%	80
Valuing volunteers	23.60%	139
I do not know what success looks like for my club	3.06%	18
I am unsure how to create success for my club	1.36%	8
Other (please specify)	2.55%	15

1  
3  
5  
2  
4





## OXFORDSHIRE RFU FIRST FEMALE PRESIDENT

Hello Everybody,

Firstly, let me say how honoured and privileged I feel to not only be asked to serve as your President for the next two coming seasons, but also to be the first lady to do so.

Some of you will already know me from my involvement with Competitions, Discipline and more recently Safeguarding, but for those that do not, I have been involved with rugby for over 30 years.

It began when I started serving on the committee of Harwell RFC as their match secretary, falling into the job by accident, after filling in for someone for "a couple of weeks or so" or that is what they said! My involvement with them, continued when I went on to become their Fixture Secretary, a role I still do.

In 2005 I took on the County Role as Disciplinary Secretary and more recently as the County Safeguarding Manager. I also along with my husband, Doug Bosley, help run the Counties Senior Cup and Shield Competitions.

Oxfordshire RFU is progressing to be a forward-looking county trying to give its clubs the rugby they want with league structures and cup competitions. This season we will see the opening of the first RFU 4G pitch in the county that is to be placed at Horspath Road, Oxford. This facility will be open for the use of all county clubs, by a booking system. The county also now runs a Value the Volunteer recognition programme that rewards the people that week by week give their time in very many ways to help keep the counties clubs running.



I look forward to getting around all the clubs senior and junior sections and seeing you all over the season and wish you the best of luck for the season.

**Jenny Bosley** President



# RFU COUNCIL REPRESENTATIVE NOTES

Firstly I cannot believe how quickly my first season as your Council Rep has gone. The RFU Council is certainly an interesting and impressive forum full of people with a great wealth of knowledge and understanding of our game. I will list below a few bullet points of the meetings I have attended.

Finances for next year will be tough, we have no Autumn Internationals, bearing in mind each England home game generates circa 15 million pounds and only 2 Six Nations home games. Plus the cost of sending the England team to Japan. However the RFU continues to provide more money than any other union to the grassroots game. The Community Game Board has made loans of 4 71k and grants of 214k to grassroots clubs this season. In addition to the roll out of 26 Artificial Grass Pitches.

800 Volunteers have been recognised at the British Airways Fan village, during the Autumn Internationals. A further 18 were recognised at The Spirit Of Rugby for their outstanding contribution to the game including Jane and Paul Weaver of Banbury RFC.

## Ticketing

The Secondary Market continues to operate and was especially active during the New Zealand game. Please can I urge clubs to ensure that their ticketing policies are rigidly observed. The RFU legal team continues to investigate clubs and will apply sanctions to any clubs breaching the ticket policy terms and conditions.

All 15 a side games must be recorded on GMS as of now as this will affect your International Ticket Allocation.

## Half Game Rule

"All clubs, teams, schools and colleges must ensure that each player selected in every match day squad must play at least half of the available playing time". Perhaps this may stop us receiving emails from parents whose sons or daughters spent all day at a tournament but did not play in one game. Your feedback on this would be most appreciated.

Please do contact me if there are any issues you would like me to discuss at Twickenham on your clubs behalf.

## PFR

A simplified process of planning and fund release has been approved which should ease the burden on CB's.

As promised below please find a list of guests who have been entertained at Twickenham, plus a few bullet points from the council meetings I have attended so far this season.

**Eng v SA:** David Lakin (Chipping Norton) & Jamie Lakin (Banbury)

**Eng v NZ:** Chris Skaiffe (ORFU)

**Eng v Japan:** Bob & Sally Fisk (Witney)

**Eng v Aus:** Doug & Jenny Bosley (ORFU)

**Eng v France:** Gina Overton & Guy Hewitt (ORFU & Wallingford)

So far this season I have visited Oxford Harlequins, Chinnor, Abingdon, Littlemore, Witney, Wallingford and Oxford.



**Rob Walsh** RFU Council Representative

## CALENDAR OF EVENTS MAKE SURE YOU MARK THEM IN YOUR DIARY!

**June 11th**  
Executive meeting

**July 9th**  
AGM meeting

**August**  
No meeting

**September 10th**  
Executive meeting

**October 8th**  
Executive meeting

**November 12th**  
Clubs meeting & Financial AGM

**December 10th**  
Executive meeting

**January 14th**  
Executive meeting

**February 11th**  
Executive meeting

**March 10th**  
Clubs meeting

**April 14th**  
Executive meeting

**May 12th**  
Executive meeting



## ADAM PEARCE: NEW PLAYER AT 43YRS OLD

I started coaching a few years back as an enthusiastic Dad, since then I have really enjoyed my coaching journey with Gosford All Blacks. As many volunteers I joined the club to support my son however since joining the coaching team I have become the head coach for the under 12's, completed my ERCA and took on the role of the club coach coordinator each of my roles within the club are both demanding and satisfying. In my younger years I never played rugby even at school, it was always about football however after experiencing the wonderful atmosphere at club, county, national and international games I have fallen in love with this sport.

Earlier this year I went along to watch our third team play against another local club, it looked like a competitive but fun environment, this got me thinking "Maybe I should actually step over the white wash at the grand old age of 43 and play the game", so another part of my journey started. I attended training on Tuesday and Thursday evenings with our first team over the following 6 weeks, this was clearly wasn't enough in preparation for my first game but never mind.

I arrived on game day and spoke to The captain he asked "Where do you play?" to which I responded "I have never played" after a slightly puzzled look vanished from his face he suggested I played second row as a 6 foot 6" 16 1/2 stone chap it makes sense but I had no understanding of what that permission asked or demanded of me. After a very quick introduction to being lifted (see the attached picture) in the lineout and my role in the scrum which thankfully was agreed to be uncontested we got going.

The game was great fun I haven't laughed so much while playing a "competitive" game in years, it was a wonderful introduction to playing rugby and it also will help me to develop more empathy for the players.

Finally, I want to thank everybody that I've spoken to, engaged with, worked with, played with and developed with so far and I hope it will continue for many years to come. Now I have finally started playing I am going to keep up and try and play in more thirds games across next season.





## DANNY CRUMP LEAVES WITH A LIFE TIME AWARD & A MAJOR LEGACY AT WITNEY RFC

Danny first turned up at the club in the mid 1980's as a veteran player. He played for a couple of seasons before breaking a leg which ended his playing career. Shortly after that he took on the chairman role, a position he has filled for the last 30 years.

Danny brought a more commercial approach to the club's activities and during his tenure the club has seen continuing improvement in its facilities including the major redevelopment and extension of the changing rooms, construction of the jubilee bar and extension of the bar, kitchen and cellar facilities. On the playing side we have also installed match standard floodlighting on two pitches and completed a total redevelopment of the first team pitch. Danny was one of the first in the club to recognise the opportunity for attracting corporate sponsorship to the club and lead the way in developing this. His former employers were one of our first major sponsors but since then he has been instrumental in introducing many other sponsors to the club, providing an invaluable source of revenue which helped fund the many developments we have undertaken.

During this time the focus has however remained on providing rugby to as many individuals as possible allowing players room to develop to their full potential. With up to four senior mens sides regularly turning out, a ladies team and a large minis and juniors section (including a special needs rugby squad) all operating within the club, Danny can be very proud of this legacy.



## QUILTER KIDS EVENT TWICKENHAM

Having been given 100 tickets from the RFU the county team distributed them across the teams and we have a great report back from Robert Seth Scarffe who is a coach within the academy side for Witney RFC;

"I was part of the 8 people from Witney who were given tickets as part of the offer created to allow CBs to utilise the tickets as a reward and an incentive to keep players aged 18-24 within our game. 4 tickets were given to me as coach of the Academy side and 4 were given to the Angles Witney Ladies team. We took a mixture of coaches and player with us. Our seats were next to members of Gosford All blacks so naturally a great day with good old fashion banter ensued.

It was great to be able to watch the 2 different matches with the Red roses and a development England side beating Barbarian sides"



## DAVE LARHAM REGIONAL DEVELOPMENT OF CER (RDO) & NICK TODD COMMUNITY RUGBY COACH (CRC) HARD WORK PAYS OFF



NICK TODD



DAVE LARHAM

Both Dave and Nick have been working hard to assist and develop clubs across Oxfordshire and ensure their annual accreditation is completed. This is a fundamental of the work that is done to support and help clubs via the RFU team and requires patience and support along the way.

## WHAT IS CLUB ACCREDITATION?

Club rugby lies at the heart of rugby in England. It is where the game is played in huge numbers and it is the environment that the RFU Development Department is committed to supporting by 'strengthening clubs and growing the game in the communities around them'.

Part of this commitment is to introduce a new Club Accreditation scheme that will help all club sections to become stronger, more effective, more efficient and more enjoyable places in which to play rugby. Unlike other accreditation schemes, this one provides a framework for a club to show what it is doing, how it does it, and where it can improve.

The RFU hopes that clubs will be both challenged by the process and enjoy it. It will allow clubs to exhibit all that is good about rugby in their adult sections, mini and youth, women and girls and touch rugby, while demonstrating that this is all achieved in a friendly, welcoming environment.

**The Club Accreditation scheme is based upon the six Key Drivers identified as crucial to a strong club:**

1. Retaining & Developing Players
2. Recruiting New Players
3. Recruiting & Retaining High Quality Coaches, Volunteers & Referees
4. Effective & Efficient Facilities
5. Effective & Efficient Management and Governance
6. Integration with the Local Community

Each of these Key Drivers, together with the Core Values of the game, is represented within the Club Accreditation scheme and together they represent the component parts of a strong, sustainable club.

The scheme is straightforward and designed to both recognise and assist a club to continually improve, while demonstrating a real commitment to providing all that's best in rugby union. The RFU's Community Game Board, a partnership between executive staff and volunteers, sees the scheme as an exciting development in the way the RFU supports its member clubs.

Club Accreditation will bring many advantages for your club, including the Sport England Clubmark for your mini and youth section. It will give your club credibility with local authorities and educational establishments and confer the status of the RFU brand to attract potential sponsors.

### A WAY OF LIFE ....

Clubs will be expected to undertake an annual self-review as part of the accreditation process with a more formal review with the RDO every two years. This process will form part of the club's annual development planning process.

**For more information please go to:**  
<https://www.englandrugby.com/governance/legal-and-admin/club-accreditation/>



# VOLUNTEER RECOGNITION PROGRAM

We had 61 volunteers nominated for the combined Mitsubishi Volunteer recognition program and Oxfordshires Volunteer Recognition Program this year which is the highest so far – so well done all that did nominate their teams and deserving volunteers. This is the list of those nominated;



NAME	CLUB
Adam Pearce	Gosford All Blacks
Amber Hodges (Mrs)	Oxford RFC
Andrea Churchyard	Banbury RUFC
Andrea Lewis	Grove RFC
Andrew Lloyd	Oxford RFC
Aubrey Doran	Henley Hawks
Carly Hadfield	Henley Hawks
Cath Bufton-Green	Oxford Harlequins
Chris Skaife	Oxfordshire RFU
Chris White	Banbury RUFC
Clare Copper	Oxford Harlequins
Dave Jackson	Littlemore
Dave Massey	Littlemore RFC
Dave Rudman	Littlemore
Doug Haggart	Wallingford RFC
Emma Turner	Littlemore
Faye West	Littlemore
Glen Murray	Littlemore
Graeme Williamson	Chipping Norton RUFC
Graham McDonough	Abingdon
Granville Williams	Oxfordshire Referees Society

NAME	CLUB
Jamie Green	Oxford Harlequins
Jo Purkess-Beckett	Wallingford RFC
John Brodley	Oxford
John Perry	Littlemore
Keith Cook	Banbury RUFC
Keith Upton	Bicester
Keith Wilson	Faringdon RUFC
Kris Blaszk	Wallingford RFC
Lee Howard club.	Littlemore
Marc Wilding	Army Rugby Union Community Rugby
Marcus Wiltshire	Wallingford RFC
Mark Evans	Chipping Norton
Mark Peris	Wallingford RFC
Mark West	Littlemore
Matt Bevis	Wallingford RFC
Mike Willis	Banbury
Natalie Hall	Didcot RUFC
Neil Hopper	Oxford Harlequins RFC
Nele Demeyere	Gosford All Blacks
Nikki Rudman	Littlemore
Patrick Neale	Chipping Norton RUFC

NAME	CLUB
Paul Crisp	Bicester RUFC
Paul Sharkey	Wallingford RFC
Phil "Monty" Montanaro	Banbury RUFC
Philippe Peirsegaale	Gosford All Blacks RFC
Polly Blay	Oxford RFC
Rachael Barker	Gosford All Blacks RFC
Ralph Smith	Wallingford RFC
Richard Cosier	Wheatley
Sam Beckett	Oxfordshire Rugby Football Schools Union
Sam Colmer	Abingdon RFC
Sarah Algar	Witney RFC
Saskya Huggins	Oxford RFC
Simon Chadbone	Wheatley RUFC
Steve Trenchard	Chinnor RFC
Storm Dinsey	Grove
Stuart McIntosh	Chinnor RFC
Stuart Mount	Wallingford RFC
Tara McSweeney	St Anne's St John's Rugby Football Club
Tracy Turner	Wallingford RFC

3 volunteers were placed into the Mitsubishi Volunteer of the year competition: Neil Hopper Oxford Harlequins RFC, Aubrey Doran Henley RFC and Phillippe Peirsegaale Gosford All blacks RFC due to their outstanding contributions across the last year. After much deliberation on their part as it was hard contest Phillippe was awared the Oxfordshire volunteer of the year and goes forward into the company wide competition to win a Mitsubishi for a year.



## TICKET ALLOCATIONS AS GIFTS FOR THE SEASON JUST GONE

Six nations tickets went to volunteers:

- Graham McDonough
- Mike Willis
- Keith Upton
- Mark Evans
- Storm Dinsey
- Aubrey Doran
- John Brodley

(Ali plus 3 x physios for heroic efforts attempting to save a player on the pitch at Henley)

- Ali Horsfield
- Pete Bucknall
- John O'Clee
- Nick Allso

**Jane and Paul Weaver** – for the outstanding volunteer event and tickets – direct from RFU.

**Bethan Dennick** – for the RFU allocation of a pair of NZ tickets.

**Matt Bevin** – for the RFU allocation of a pair of Australia tickets.

## VOLUNTEER RECOGNITION LUNCH

A lovely lunch was held at Oxford Harlequins on the 11th May where all nominees were invited to share a lunch with Dave Stubley from the RFU and Oxfordshire Exec Board. All volunteers received a signed and framed certificate, a Mitsubishi back pack, a Oxfordshire Volunteer recognition vacuum flask and power pack to thank them for all the wonderful contributions they have made.



## WELL DONE PHILLIPPE OUTSTANDING – THE NOMINATION

Phil is the Director of Youth Rugby at the club. Under his leadership, we've seen terrific growth in the numbers of young players – female and male. He gives his all to support them and the youth coaches. He's constantly seeking ways to improve the experience and maximise the number of smiles from players. Together with his wife, Nele, he is a lynchpin of the club. An example: at the end of the 2017-18 season, they went through match photos (which they had taken) of all the youth players at the club, and mounted and framed an image for every single youth player to take away at the end of the season. Phil also directed the county-wide U7s and U8s TagFest, which we hosted in April 2018 and made a huge success of it. Phil epitomises the values of Kids First Community Rugby.





## GIRLS GIRLS GIRLS! COUNTY WOMENS REPORT CHANGES A FOOT AND LOTS MORE TO COME !



We have a brand new young dynamic coaching team with fresh ideas to take the county forward. Francesca Rowan is head coach assisted by Matt Snudden with Megan Davis as PR and media officer, Chris Krabbe as team manager.

Francesca is well known within the county both as a player and coach having played both union and league rugby. She has coached at Oxford RFC and Oxford university ladies sides, the county under 15s and 18s. Matt is new to the area but comes with a wealth of experience in coaching women's rugby; he was Head coach for Queen Marys University and finalist for coach of the year in 2017. We look forward to a long and successful county programme with our new team.

The county trials got off to a flying start with over 50 women turning up; we formed a squad of 32 players to progress forward to our first game.

This season we based our selves at Oxford RFC and the plan is to host games at clubs that support and run women's teams within the county.

This year we hosted only one of our three games at home against Nottinghamshire, Lincolnshire and Derbyshire. We started well against a strong team that had played together for some time; our county girls put on a great display of rugby, and despite losing the game 24-37 the coaches were optimistic for the future.

Our next game was away to Hertfordshire at Fullarians RFC. We had to make some changes to the squad owing to injuries, the girls played well in a hard fought game which we lost 12-42 to a superior team. The management and coaches were very proud of how they played and will work on things on the next training session. On to the next away game, a long trek to Stowmarket RFC to play the eastern counties which encompass a vast area of the east of England. The girls turned up in a positive mood despite the long bus journey and we were without some players, but the rest stepped up to the mark but once again we were on the wrong side of the score sheet losing 58-10

This was a land mark game for Anne Wheeler she had played 15 games for the county and was retiring. We presented Anne with a glass trophy and bottle of champagne

in recognition of her sterling service to Oxfordshire Women's Rugby.

Through a generous sponsor we were able to take 10 of the players to Twickenham to see the England Barbarian games which they enjoyed immensely. We have a 5 year plan in place to develop and improve Women's Rugby within the county. The coaches will also be working closely with the girls under 18 squads to enable us to ensure that their transition into senior rugby is as enjoyable and smooth as possible.

**Chris White** Director of Rugby



## U18S GIRLS RUGBY IN OXFORDSHIRE



Another good season for the U18 Girls in Oxfordshire. The mixed age group spanning U16s, U17s and U18 has its challenges for players and coaches alike. Each season the dynamic changes with players coming into and leaving the squad to progress to senior rugby, but it also makes life interesting and provides plenty of development opportunities.

At club level the Gosford All Blacks U18s have continued to excel with a squad large enough to play 15 a-side fixtures every week. The commitment from everyone involved is fantastic especially as the opposition clubs are located from Northampton, to London, to Sussex!



The team entered the season as RAF Halton Invitational 10s champions, reached the semi-finals of the RFU Area 2 Cup Competition and ended the season as winners of the Middlesex St George's Day 10s Tournament.

Gosford All Blacks players also currently make up most of the Oxfordshire U18s team. This season the county programme was a series of festivals with 3 other counties, Berkshire, Buckinghamshire and Dorset & Wiltshire. Both 15 a-side and 7s formats were played at the festivals.

The commitment and skill of the girls has been recognised with an incredible 12 players trialling and being accepted onto the Player Pathway Centre of Excellence Programme.

To top it all off two players, Ella Lovibond and Mia Venner, have achieved the ultimate aim representing England in the Red Roses!

## KEVIN ROBINSON RETIRES FROM COUNTY YOUTH SECTION AND MUCH MORE

Kevin came to Oxfordshire after several years working in Thailand. He joined Chinnor RFC and played in the centre for them. He served 15 years as Chinnor RFC Fixture Secretary, 11 years as Chinnor Chairman (during which the current Chinnor ground was purchased and the clubhouse built). He was for 4 years Chairman of the Oxfordshire Schools Sevens (one of the largest 7's Tournaments in the country). He spent 2 years as a very active member of the Oxfordshire Referees Society. 3 years as Chairman of the SW Division Schools and Clubs youth committee. 10 years ORFU Youth Development Group Chair. 2 years ORFU President. Until recently was Chair of ORFU Funding and Facilities committee, which have funded extensive improvements to the facilities of all the clubs in Oxfordshire.

Oxfordshire RFU and especially its youth section owe an enormous amount to Kevin's dedication, hard work and commitment and it has surely benefitted 1000's of young players who realised their potential due to him. He will be sorely missed.



## NATWEST COMMUNITY RUGBY

Wallingford RFC were lucky winners within the Natwest force competition to give 4 players the chance of a lifetime to train with Will Greenwood and then play within a southern mixed team on the hallow ground of Twickenham. The lucky four were Stuart Mount, Craig Irwin, Jack Thurston and Dan Sadler, all had a an amazing day on Sunday 9th June and to top everything Stuart Mount (the oldest scorer in twickenhams history!) scored the first try, the smiles says it all!





# OXFORD LADIES

Oxford ladies reformed as a rugby team at the start of the 2018/19 season, under the guidance of John Brodley, the Director of Rugby. Three coaches were brought into the new setup, Fran Ronan (County Ladies Head Coach), Polly Richardson (Oxford Brookes) and Gary Morris.

The season started with an "Inner Warrior Camp", which attracted a number of local ladies and University students, some who had never played the sport before. Since then, the squad has grown, and at present has 20+ registered, with an age range from 18 to 30. A tremendous start.

We have played several fixtures, predominately clustering with other teams, with and against Grove, Newbury, Bicester, Oxford Brookes and Oxford University. This allowed our squad to grow, in numbers and in self-belief. Our final two fixtures were played as a full Oxford Ladies team, and resulted in good wins against a strong Basingstoke side, and against Wallingford, which we played on a Friday evening under lights. The ladies also received a set of club playing shirts, sponsored by the "Paterson Group", giving them their identity within the club.

At the Club presentation evening Fran Ronan, who is also the County Ladies Head Coach, presented Chloe Dare with the Players Player of the Year Award for her contribution to the



club, both on and off the pitch, especially making the new girls welcome. Chloe has just finished her degree at Oxford Brookes.

We have two ladies representing the club, playing at the NatWest Grassroots Barbarians fixture at Twickenham Stadium. Hopefully they will enjoy the experience.

Later this month we have the NatWest Rugby Force weekend, where the ladies will be painting, cleaning and refurbishing their own changing facilities at the club. Oxford Ladies train on a Thursday evening, 7 – 8.30pm. Training will start on Thursday 18th July, ready for the new season where we are planning to enter a league. Our aim is to create an environment where everyone can make friends, grow in confidence and express themselves out on the pitch, playing their brand of rugby.

## RUGBYSAFE/PLAYER WELFARE UPDATE

As you are aware one of main responsibilities as clubs is to ensure the welfare and safety of any player from minis and juniors all the way through to our senior teams. Oxfordshire County RFU are making clear strides in Player Welfare and setting standards for the rest of the country to follow. Here are some of the main points that we are looking at for the upcoming season:

- Ensure that all clubs are adhering to Regulation 9 with medical cover in place for all matches and having the required equipment available.
- Headcase online training, we would like all clubs within the county to encourage players from U12 and above to complete the online training course. Any coach must also complete this and encouragement to parents (players Under 18) to also carry out the online training so we can ensure that everyone has a better understanding of what Concussion is.
- Graduated Return to Play, we will be sending a number of resources out to clubs to share with coaches and players. Clubs must ensure that they are following the protocol and documenting this.
- Mental Health training, the RFU are looking into training being made available to give us all a better understanding of Mental Health and how we can all play our part to recognise and deal with and cases. Oxfordshire RFU are looking into training and resources to assist our knowledge of this subject.

- Rugsbysafe representatives for each club, your role will be to promote Rugsbysafe and offer advice and be a point of contact for the county at your club. If this role is of interest, please get in touch.

As the county Representative I will be getting in touch with each club and teams to offer support and advice where needed. A number of resources will be sent out in the coming months also to promote Player welfare and Rugsbysafe. Please feel free to take a look at the new Web pages at the following link: <https://keepyourbootson.co.uk/rugsbysafe/>

Medical Emergency Action Plan, please ensure that the following form is completed and shared with all coaches. The form can be completed by each age group, this form must be shared with visiting teams.

<https://keepyourbootson.co.uk/wp-content/uploads/2019/05/Medical-Emergency-Action-Plan-Guidance-Template.pdf>

**Jamie Goddard**  
Player Welfare/Medical Lead

